

# The Daily News

Formerly Rowan County News—Name Changed January, 1963

On Newsstands	1c
By Mail	
In Kentucky, One Year	\$2.50
Outside Kentucky, One Year	\$3.50
In Kentucky, Two Years	\$4.50
Outside Kentucky, Two Years	\$6.50

18,000 Readers

Volume No. 81

MOREHEAD, KENTUCKY, THURSDAY MORNING, NOVEMBER 19, 1964

NUMBER FORTY-SEVEN

## Grand Jury Returns Today; Petit Panels Come Back Monday

The grand jury returns today (Thursday), while the petit jury are scheduled to come back Monday as the November term of the Circuit Court gets down to work.

No cases had been scheduled for trial by the grand jury met only Monday before recessing until today.

Members of the grand jury are: Haskell McKenzie, foreman; Robert Alley, Claude Neal, Sherman Brown, L. P. Sturgill, Goldman Brown, E. P. Ellington, C. R. Crosthwaite, George H. Ellington, R. A. Decker, Amos Thompson and Lawrence Amest Jr.

Petit jurors include: Linden Ramsey, John W. Conley, Everett Cox, Edward N. Early, Elmer Kinder, Joe Green, Phillip Kender, Carl Beckman, Dale Eldridge, John C. Eldridge, Finis Morefield, P. M. Johnston, Herbert Glan, Norman Galt, Arnold Stegall, Charles Morehead, Bert Puckett and Belva Benham.

## State Aide States Speech To PTA

The Breckinridge Training School PTA will meet Tuesday at 7:30 p.m. in the school auditorium.

Robert McClure of Kentucky Village will be the guest speaker.

## Mrs. Ora Armstrong Is Claimed

Mrs. Ora Armstrong, a Rowan County native and the wife of Ray Armstrong, died last Thursday in Portland, Ind. She was 60.

Surviving are these nine children: Robert Armstrong, James Armstrong, Ralph Armstrong, Mrs. Ray Stoe, Mrs. Leonard Bery, Mrs. Cloyce Green, Mrs. Carl Herdell and Patricia Armstrong, all of Portland.

Also surviving are six brothers: Harry Barker, Charles Throner, Mrs. Kelly Kelly, Frank Ingram and Herman Ingram, all of Portland; Mrs. George Coan, Ft. Wayne, Ind., and Mrs. Marvin Harnegale, Laming, Mo.

Funeral services were held Sunday in Lane Funeral Home in Portland, Ind. Burial was in the cemetery.

Funeral services are to be held at 2 p.m. at the home of Mrs. Barker.



pitching horsehoes, in a nearby road near a sign (inset) designed to inform persons going to and from the clay processing plant that a strike is in progress.

## Union Strikes Lee Clay

Lee Clay Products Company at Clearfield, one mile south of Morehead, is on strike and as of today, management and labor appeared far apart.

The plant's complement of about 150 production employees, the company last week, gave the union a 2 1/2 percent raise.

Lee Clay officials and union representatives have issued no statement, but the Morehead News has been able to piece together some of the facts and points of dispute.

Three employees told a representative of this newspaper that the union wanted a 1 1/2 percent raise on the board, increase in pay and the company had offered three cents. They thought the board would be settled within the week, but this is at variance with other findings.

Apparently Lee Clay offered a 5-6-5 contract. This means a six cents an hour immediate increase, five cents more the second year, and four cents the third year for a total of 15 1/2 cents.

Lee Clay executives would neither confirm, or deny, this offer.

Another controversial issue is fringe benefits, primarily the pension plan. One Lee Clay official said: "Last year our fringe benefits totalled almost \$100,000, one of the highest, if not the highest, in the industry."

From a time standpoint Lee Clay appears in a position that is not very vulnerable. Construction work generally shuts down in most of their territory about Nov. 15. The three winter months, according to past records, are used by the company to stockpile for spring construction orders.

It is also known that other plants, mostly to the south, are filling the "contract order" for Lee Clay.

Although the company has some inventories of sewer, and other clay pipe, no deliveries are being made and all truck and rail shipments have been halted.

Lee Clay has about 29 large tractors and makes most of its deliveries on these. The company has been purchasing as far as Nashville to the southwest and Lynchburg, Va., to the east.

Obviously these are the differentials.

UNION - A sizable wage increase is in line because of inflation. Lee Clay has had three years and higher cost of living. The pension plan should be expanded with more benefits and perhaps more flexibility.

MANAGEMENT - Lee Clay is in direct competition in a highly competitive market with non-union plants to the south that pay considerably lower wages and offer less fringe benefits, and also with some non-union plants of the area such as one at Logan, Ky. Jackson, O., increasing transportation costs are a burden since Clearfield is not located near large cities where considerable building programs are in effect; the business is seasonal and the order slackens during winter; and the company has contended for years that they pay the employees more than the national average for this industry.

Many of the production workers at Lee Clay own small farms with tobacco strips. This is also tobacco stripping time and most men have their crop during the strike.

It is virtually certain that no violence will result at Clearfield among the employees contacted by this newspaper was non-existent. Rather they had kind words for the company.

One said: "It's a good company and I think Mark Bowie is a good man. But, it costs a lot more to live. Just look at the price of automobiles."

Bowie and associates from Pennsylvania, founded the company 40 years ago. Originally fast tractors had been purchased in this area for timber. After the virgin trees were cut, Bowie, a ceramic engineer, was dispatched to ascertain what industrial use could be made of the land.

The clay pipe plant was built after tractors had deposited of flint clay, ideal for vitrified pipe.

Bowie entered semi-retirement about two years ago and John Rogers was named president. He will head any negotiations for the company.

The company has operated for the most part during four decades as a son of a company enterprise with an informal friendly atmosphere between office personnel, production workers, truck drivers, etc.

But, in recent years an air of dissent has arisen almost every time the union contract expires. This is not the first strike - there have been two or three previous walkouts but they were of short duration. Probably this is the reason that workers contacted by this newspaper were complacent that the strike would not last long.

However, the tightening of a (Continued on page 9)

## Duval Query Slowed By Refusals

State Police this week continued their investigation into the murder of Talmadge Franklin Duval, although three of four persons who had been scheduled to undergo lie detector tests last Wednesday refused to cooperate.

Detective Murvel Caudill said only Tony Picco, who was one of four men who were in the party which found Duval's body in the kitchen of the home where he lived, is on Big Brushy, submitted to the polygraph examination. Results of the test, the detective reported, that Picco knew only what he had told officers previously about the matter. Picco has been exonerated from any complicity in Duval's death.

Originally the other three men had agreed to submit to the examinations, Caudill said, but they declined Wednesday morning expressing doubts about the accuracy of such tests.

Duval's wife was found two weeks ago today in a house on the farm of Lerron McGuire, about three miles from Ky. 32 on the Big Brushy Road. He had been broken in three places and there was a small laceration behind one ear. He had also been fractured in the back of the head.

Coroner Buck Jones said an autopsy performed at the University of Kentucky Medical Center concluded that Duval's death could have been caused by a brain hemorrhage sustained as a result of blows to the head.

The police officer who held Duval until Jones said he was probably unconscious for some time after being struck and before expiring.

The report also stated, according to Jones, that the slain man had stated in a statement shortly before being killed, but investigating officers said there was no evidence that the food had been cooked or eaten at his home. All dishes and food in the kitchen were clean and there were no indications that food had been cooked on the small stove in the kitchen for some time.

Also pointed out by the pathologist was the fact that Duval had lost considerable blood. However, officers said the blood was relatively fresh in this respect also. Only about a "large tablespoon" of blood was found on the kitchen floor where Duval's body was discovered.

The slain man lived along on the farm of Lerron McGuire. He had lived in the Big Brushy section for about 10 years, having come to this section, where he had relatives, from Ohio.

McGuire said he had no recollection of any robbery had been the motive for Duval's slaying, since \$314 in cash and a billfold which was on the body.

McGuire said he had no recollection of any robbery had been the motive for Duval's slaying, since \$314 in cash and a billfold which was on the body.

McGuire said he had no recollection of any robbery had been the motive for Duval's slaying, since \$314 in cash and a billfold which was on the body.

McGuire said he had no recollection of any robbery had been the motive for Duval's slaying, since \$314 in cash and a billfold which was on the body.

McGuire said he had no recollection of any robbery had been the motive for Duval's slaying, since \$314 in cash and a billfold which was on the body.

McGuire said he had no recollection of any robbery had been the motive for Duval's slaying, since \$314 in cash and a billfold which was on the body.

McGuire said he had no recollection of any robbery had been the motive for Duval's slaying, since \$314 in cash and a billfold which was on the body.

McGuire said he had no recollection of any robbery had been the motive for Duval's slaying, since \$314 in cash and a billfold which was on the body.

McGuire said he had no recollection of any robbery had been the motive for Duval's slaying, since \$314 in cash and a billfold which was on the body.

## News To Be Out Early Next Week

Deadline for all news and advertising copy for next week's issue of The News will be Monday at 5 p.m., rather than the regular Tuesday at 8 p.m.

Because of the Thanksgiving holiday next Thursday, The News will be published Friday for distribution in this immediate vicinity on Wednesday.

## Death Comes To Omar Kissick, 56

Omar Kissick, a well-known Morehead resident, died Monday in Fleming County hospital, Flemingsburg, after a long illness. He was 56.

A native of Plummers Landing, Kissick is survived by his wife, Margaret; Sonnet Kissick and these five daughters: Mrs. Marie Kissick, Hartford, Conn.; Mrs. Edna Kissick, Morehead; Mrs. Effie Cheneau; James, Morehead; Mrs. Tommy Powers, Stanford, Ky.; and Mrs. Paris Jackson Jr., Plummers Landing.

Also surviving are these brothers and sisters: Lloyd Kissick, Elmwood, Ky.; Mrs. Edna Hicks, all of Morehead; Walter Kissick, Salt Lake; Mrs. Ona Cooper, Hillsboro; Mrs. Effie Allen, Flemingsburg; and Mrs. Ella Corbin, Shamburg.

Funeral services were held Wednesday in Flemingsburg. Burial was in Filson Cemetery.

## Campbell Claimed To Command

Capt. William H. Campbell, formerly stationed in Hanksville, has been named commander of State Police Troop F, which is being organized at Morehead and Ashland.

Campbell replaces Maj. L. C. Pyle, who has been transferred to Ashland as post commander.

Baxter replaces Sgt. J. O. Coby, who has been transferred to Ashland as post commander.

Troop F covers 15 counties, including 11 from the Morehead post, and four from Ashland.

GI FAMILIES RETURN - Since Cuba shut off the flow of "uniting effect" water supply last winter, about half the American women and children have returned to the United States. Families leave the base as their menfolk finish two-year tour periods. New recruits are sent to Cuba on one-year tours, without their wives and children.

Fire department. Council pointed out "uniting effect" water constant depletion, a major factor in the department's growth.

Interest in fire fighting started early in life. He took reporter less than three months ago that he had spent 88 of his years in the fire department or another with volunteer fire departments.

In addition to pressing for the most modern equipment available, McCullough also maintained a keen interest in seeing that younger men were taken into the department. He encouraged many of them to enter the part of the fire that would benefit him in many years of experience.

McCullough was for many years a volunteer fireman. A crusader for adequate equipment and for stricter fire safety regulations, McCullough served on the city council for 10 years, presiding over the city's weekly meetings and was always on hand for City Council members at which matters concerning the department were to be discussed.

Only last week City Council paid tribute to the veteran fire chief by unanimously approving a citation of "gratitude and appreciation" for his long service to the city and his contribution to the building of the (Continued on page 9)

## PUBLIC SESSION

## Cave Run and Hearing Planned

A public hearing on land acquisition for Cave Run Dam and Reservoir has been scheduled for Dec. 10.

The Army Corps of Engineers is conducting a study of the project that the session will be held at 7:30 p.m. in the Rowan County High School gymnasium.

The Dec. 10 session will be the first public hearing on land acquisition which is expected to take more than \$11,000,000 of the estimated total of \$25,000,000 which the project will cost.

According to the Corps of Engineers announcement, the public hearing will be for the purpose of "informing" residents of the area affected by the project of the project and the general location and extent of lands required, the basic policies and procedures involved in land acquisition, and to answer any questions that affected

landowners or other individuals may have concerning the project."

Located approximately four miles south of Morehead on the Licking River, Cave Run Dam will form a reservoir that will extend approximately 64 miles through the Licking River to the Army. Lands affected will lie in Bath, Rowan, Menifee and Morgan counties.

All persons in this vicinity are invited to attend the session. A copy of Engineers announcement pointed out.

Actual construction of Cave Run dam is expected to get underway next spring. An appropriation of \$1.3 million was made for fiscal 1965 by the 88th Congress. A \$100,000 appropriation is expected to be called for by President Johnson in his fiscal 1966 budget, which will go to Congress shortly after it reconvenes in January.

## Community Services Scheduled During Thanksgiving Week

Community-wide Thanksgiving services will begin Monday, Nov. 22, at 7:30 p.m. through Thursday morning.

Rev. John Conley, president of the community association said today.

The opening service will be held Monday at 7:30 p.m. at the First Baptist Church will deliver the sermon in the Nazareth Church.

Rev. Scott Griffith, pastor of the Clearfield Church of God will be the speaker at Wednesday's 7:30 p.m. service. Griffith will deliver the sermon in the Nazareth Church.

Tuesday at 7:30 p.m., Rev. Kenneth Coley, pastor of the First Baptist Church will deliver the sermon in the Nazareth Church.

Thanksgiving Day services are scheduled in the Presbyterian Church with Rev. Tom Ditto as the speaker. Time is 9:30 a.m.

"The whole community is participating in these services," Conley said, "and all people from all churches are invited to worship together in this community-wide series."

## TWO-THIRDS WAY United Fund's Advance Gifts Division Reports \$10,000

With only one of its divisions reporting, the Morehead-Rowan County United Fund is already two-thirds of the way toward its goal in the 1965 fund-raising campaign.

That was the word sent week from Harold Bellamy, campaign director, who said the advance gifts division of the United Fund has hit the 100-percent mark with total pledges of \$10,000.

A cleanup campaign, designed to attain the balance of \$30,000, will be conducted next week by members of four advance gift divisions: the Lions Club, Optimist Club, Kiwanis Club and the Morehead Junior Chamber of Commerce, Bellamy said.

"We anticipated," the chairman pointed out, "that the 1965 campaign would be a record year and there are indications that we will go over the top."

Heavy has been coming from the Morehead-Rowan County United Fund this year, the advance gifts division was staffed by Bellamy, Eldon T. Evans, Randall G. Wells, W. E. Cravens, Alvin McClintock, Dr. Warren Proffert, Wallace G. Carr, J. M. Clayton and William H. Lyvine.

Presenting Johnson has announced that living costs increased by one fifth of 1 percent in September. This is an increase of 1.2 percent over September a year ago. This is the highest price statistic announced monthly by the Labor Department.

Three automobile accidents - all of the minor variety, were investigated in Rowan County by State Police this week.

A rear-end collision between a car going west on U.S. 60 was reported Saturday.

Charles E. Bond, 50, of Olive Hill, was stopped at the intersection of U.S. 60 and Ky. 29, east of Morehead when his car was hit from the rear by one driven by David Jefferson Jr., 19, of Morehead, Rt. 2.

Bond told Trooper Marvin Jennings he was stopped behind a car which was waiting for oncoming traffic to clear before making a left turn.

The Jefferson car skidded 40 feet before striking Bond's vehicle.

A parking lot mishap at a Farmer truck stop was checked early Sunday by Trooper Jennings.

He said a vehicle operated by Nelson Logan Pettit, 25, of Morehead, struck a parked car owned by Vernon Emerson of Orlin, Ky.

Pettit was backing out of the parking lot when the collision took place.

Heavy fog was sustained by a car traveling south on Ky. 377, Sunday about 8 p.m., near the intersection of the two roads when it was struck by a car standing in the highway.

Operator of the car was Hansel Ray Gilbert, 44, of Vanceburg.

## 35 Gons On Copper Still Confiscated

Local, state and federal officers last week confiscated 35 gallons of copper still liquor from one officer called "one of the nicest little stills I've ever seen," at the residence of John Turner on Little Perry.

Sheriff Curt Lewis said the 35-gallon still copper still was taken along with some three to four gallons of illegal whiskey, and a quantity of sugar, malt and other items normally used in illegal whiskey making operation.

Turner was arrested on a Federal charge of possession of whiskey on which the tax had not been paid, and has been arrested.

C. B. (Boyd) McCullough, longtime Morehead fire chief and for many years an active participant in the civic life of the city, died early Saturday at St. Claire Medical Center. He was 69.

McCullough was not unexpected. Some two months ago McCullough became seriously ill and was hospitalized in Lexington. Physicians there diagnosed his affliction as incurable and he was pronounced to be in poor condition when he returned to Morehead.

McCullough was for many years a volunteer fireman. A crusader for adequate equipment and for stricter fire safety regulations, McCullough served on the city council for 10 years, presiding over the city's weekly meetings and was always on hand for City Council members at which matters concerning the department were to be discussed.

Only last week City Council paid tribute to the veteran fire chief by unanimously approving a citation of "gratitude and appreciation" for his long service to the city and his contribution to the building of the (Continued on page 9)

## FIRE DEPARTMENT VETERAN C. B. McCullough, 69 Claimed

than 40 years as a member of Morehead's Volunteer Fire Department, many of those years as its head. Under his watchful eye and tireless devotion to service, the department has grown to the point where it is now recognized as one of Kentucky's best.

Well-equipped and financially sound, the local department has often been pointed out as a model for cities of the size of Morehead.

McCullough took every opportunity to speak out in behalf of fire safety, and in behalf of the men who made up the department. He was often impatient with public officials and volunteer firemen. A crusader for adequate equipment and for stricter fire safety regulations, McCullough served on the city council for 10 years, presiding over the city's weekly meetings and was always on hand for City Council members at which matters concerning the department were to be discussed.

Only last week City Council paid tribute to the veteran fire chief by unanimously approving a citation of "gratitude and appreciation" for his long service to the city and his contribution to the building of the (Continued on page 9)

**CLASSIFIED ADVERTISING**

Classified Advertising Rates

Minimum charge (each subsequent insertion) \$1.00

Minimum charge (first insertion) 50c

Minimum charge (each subsequent insertion) 25c

Display Classified Advertising, per inch \$6.00

Entered as Second Class Mailing Matter at Post Office - Morehead, Ky.

**HELP WANTED**

At Frosty's Restaurant. Apply in person at restaurant 9:00-11:00 a.m. and 3:30-4:00 p.m.

**MOVING AND STORAGE**

For Complete Local And Long Distance Moving Service, Packing And Storage -

Call 784-5903

**BLAIR TRANSFER & STORAGE**

Agents For Greyhound Van Lines, E. W. Main - Morehead, Ky.

**FOR RENT**

Office space. Large 10x13 room on first floor available in Main Street building. Centrally located. Phone 784-7117.

**DOG'S RADIATOR SERVICE**

Now located at 1033 1/2 mile above Tabernash. c-47

**FOR SALE**

Good 2-bedroom house trailer with bath. Clean and ready to go. Call 784-5328 or see J. Sparkman in Tolliver Addition. c-47

**APARTMENT FOR RENT**

Call Mr. M. Meadows, 784-5657. c-47

**APARTMENTS FOR RENT**

Completely furnished apartments. 1 mile East US 50. Phone 784-5328. c-47

**FOR RENT**

House trailer. Phone 784-8841. c-47

**FOR RENT**

One-bedroom house trailer. On Bridge Street. Call 784-5903. c-47

**FARMS FOR SALE**

Call Joe Sutherland Real Estate, Owensville, Ky. Phone 674-5041. Also second mortgage real estate loans. c-47

**FOR SALE**

Like new 1964 Tappan speed 4140. Call 784-7158. c-47

**USED CARS**

**'60 CHEVROLET**  
6 Cylinder  
4-Door Power Glide

**'56 CHEVROLET**  
4-Door Bel Air

**'59 CHEVROLET**  
V8 4-Door Power Glide

**USED TRUCKS**

**'49 CHEVROLET**  
3/4 Flat

**FARMALL CUB TRACTOR**

**'59 CHEVROLET**  
Tractor and Trailer

**'59 CHEVROLET**  
On Flat

**'56 FORD**  
Pickup Utility Body

**Midland Trail Garage**

"Pioneers in Rowan County Transportation"

**Commissioner's Sale**

**RAMBLIN' THRU WILLIBA**

**Poredom to Receive The Klan's Robes**

By Glenn Hutton

Up here have been sort of proud of Mr. Johnson for telling every body he aimed to robe every body in the Klan robes and the Klan robes and the Klan robes. He said he aimed to robe every body in the Klan robes and the Klan robes. He said he aimed to robe every body in the Klan robes and the Klan robes.

By Glenn Hutton

Up here have been sort of proud of Mr. Johnson for telling every body he aimed to robe every body in the Klan robes and the Klan robes. He said he aimed to robe every body in the Klan robes and the Klan robes. He said he aimed to robe every body in the Klan robes and the Klan robes.

By Glenn Hutton

Up here have been sort of proud of Mr. Johnson for telling every body he aimed to robe every body in the Klan robes and the Klan robes. He said he aimed to robe every body in the Klan robes and the Klan robes. He said he aimed to robe every body in the Klan robes and the Klan robes.

**Notice to Creditors**

Bertha White of Clearfield, Ky. has been appointed Executor of the estate of James M. White, deceased. All persons having claims against said estate are to present them to the Executor, verified according to law, not later than February 19, 1965.

**HATS ON SALE**

5% Off Brand Hats, 15% and 1/2 Off Regular Price

Shop Early! ★ ★ ★

**RENEW YOUR OLD FURNITURE**

Complete Antiquing Kits by Martin-Senior 12 Colors \$4.95

★ ★ ★

**GIFTS**

Christmas gifts for everyone on your list, including stocking gifts for the children.

**DEANE'S MILLINERY & GIFT STUDIO**

413 Wilson Ave. - Ph. 784-5504

Hours: Tues.-Sat. 9 a.m.-5 p.m. CLOSED ON MONDAY'S

**Help Wanted - Male Accountants**

Major industrial corporation has career opportunity immediately available for accountants. Should be recent college graduate, military exempt, some social. Must be willing to relocate. Good starting salary, benefits, excellent future, full confidential interview, write resume and outlining experience, qualifications, salary requirements to:

**The Morehead News**

Formerly Rowan County News

Published every Thursday at Morehead, Rowan County, Ky. Entered as Second Class Mailing Matter at Post Office, Morehead, Ky.

W. E. Crutcher, Publisher  
Marvin Wilson Jr., Editor  
Mary J. Caudill, Business Manager

Office Fourth Estate Building - E. Main St. - Phone 784-4116

When requesting change of address be sure to include old address. CIRCULATION RATE

One Year	Two Years	Five Years
\$12.00	\$21.00	\$35.00
4.00	7.50	17.50

No subscription for less than one year. All subscriptions payable in advance. None accepted on telephone.

**Forest Closing**

**Edict Rescinded By Breathitt**

Long-awaited rainfall prompted Gov. Edward T. Breathitt Friday to lift the forest closing in 1800 Kentucky's 120 counties. He said the affected areas were no longer in a state of emergency and the forest closing was rescinded. Breathitt closed all woods and fields to the public Tuesday for an indefinite period.

The governor said the high winds of the past few days had calmed and a general rain is forecast for Kentucky beginning sometime Monday.

In the reopened counties, squirrel hunting, archery deer-hunting and goose hunting seasons may resume as well as field trials for bird-dogs and Beagles.

Fishermen also are allowed to fish from banks as well as boats. "We're in beautiful shape today," the County Chief Maynard Marcus said.

Although six new fires were reported, said the state work now consisted of mop up operation for old fires.

The governor said the public is to remain cautious about fires in the reopened counties.

These are the counties where the ban on public entrance to woods and fields has been lifted: Anderson, Bourbon, Campbell, Clinton, Fleming, Grant, Jackson, Knox, Letcher, Mason, Montgomery, Pendleton, Robertson, T. L. Morehead, Wolfe, Boyle, Carroll, Cumberland, Franklin, Harlan, Jessamine, Lincoln, Logan, Madison, Nicholas, Perry, Rockcastle, Washington, Woodford, Bell, Breckin, Clark, Boone, Gallatin, Harrison, Carter, Wayne, Clay, Fayette, Boone, Breathitt, Knott, Leslie, Madison, Monroe, Casey, Pulaski, Scott and Whites.

**134 Pints of Blood Given During Bloodmobile Visit**

Moreheadians contributed 134 pints of blood here Nov. 4 as the Red Cross bloodmobile made its annual fall visit to the community.

Blood recruitment chairman John Collins said 156 people volunteered to contribute, but 22 were rejected for various reasons.

Collins said a goal of 150 pints had been set, and the 134-pint total, while not satisfactory, would make it necessary to increase the total for the next year.

For 11 of the women worked a total of 120 hours to staff the visit, while four local physicians "provided coverage."

**Second Mortgage Real Estate Loans**

TO CONSOLIDATE all your old bills into one payment. One place to pay. 5 years repayment terms, 30 days service, no red tape. We have refinanced them, let us help you. Dealers, agents inquiries invited.

**BUILDER'S CONSTRUCTION FINANCE CORP.**

1524 CENTRAL AVE. ASHLAND, KY. P. O. BOX 802 PHONE 325-3747

**MOORE'S DRY WALL**

Remodeling and Building

**RALPH MOORE**

128 Branham Ave. Phone 784-5155

**175 Acre Blue Grass Farm!**

Livestock, Farming Tools, Feed, Etc. AT ABSOLUTE

**MAZE AUCTION**

SATURDAY, NOV. 21st - 10 A.M.

LOCATED: 1 1/2 Miles North of Bethel, Ky., on State Highway No. 11

175 ACRES - 8 ROOM HOME - 4.71 A. TOBI!

**95 Acre Bath Co. Farm**

2.15 ACRES TOB. BASE

**Maze Auction Co.**

SELLING AGENTS - Ph. 674-6131 - 674-6481, OWINGSVILLE, KY.

AUCTIONEERS - James T. Jones and Roger Hays

For the best results let us handle your next SALE

**Forest Closing**

**Edict Rescinded By Breathitt**

Long-awaited rainfall prompted Gov. Edward T. Breathitt Friday to lift the forest closing in 1800 Kentucky's 120 counties. He said the affected areas were no longer in a state of emergency and the forest closing was rescinded. Breathitt closed all woods and fields to the public Tuesday for an indefinite period.

The governor said the high winds of the past few days had calmed and a general rain is forecast for Kentucky beginning sometime Monday.

In the reopened counties, squirrel hunting, archery deer-hunting and goose hunting seasons may resume as well as field trials for bird-dogs and Beagles.

Fishermen also are allowed to fish from banks as well as boats. "We're in beautiful shape today," the County Chief Maynard Marcus said.

Although six new fires were reported, said the state work now consisted of mop up operation for old fires.

The governor said the public is to remain cautious about fires in the reopened counties.

These are the counties where the ban on public entrance to woods and fields has been lifted: Anderson, Bourbon, Campbell, Clinton, Fleming, Grant, Jackson, Knox, Letcher, Mason, Montgomery, Pendleton, Robertson, T. L. Morehead, Wolfe, Boyle, Carroll, Cumberland, Franklin, Harlan, Jessamine, Lincoln, Logan, Madison, Nicholas, Perry, Rockcastle, Washington, Woodford, Bell, Breckin, Clark, Boone, Gallatin, Harrison, Carter, Wayne, Clay, Fayette, Boone, Breathitt, Knott, Leslie, Madison, Monroe, Casey, Pulaski, Scott and Whites.

**175 Acre Blue Grass Farm!**

Livestock, Farming Tools, Feed, Etc. AT ABSOLUTE

**MAZE AUCTION**

SATURDAY, NOV. 21st - 10 A.M.

LOCATED: 1 1/2 Miles North of Bethel, Ky., on State Highway No. 11

175 ACRES - 8 ROOM HOME - 4.71 A. TOBI!

**95 Acre Bath Co. Farm**

2.15 ACRES TOB. BASE

**Maze Auction Co.**

SELLING AGENTS - Ph. 674-6131 - 674-6481, OWINGSVILLE, KY.

AUCTIONEERS - James T. Jones and Roger Hays

For the best results let us handle your next SALE

**175 Acre Blue Grass Farm!**

Livestock, Farming Tools, Feed, Etc. AT ABSOLUTE

**MAZE AUCTION**

SATURDAY, NOV. 21st - 10 A.M.

LOCATED: 1 1/2 Miles North of Bethel, Ky., on State Highway No. 11

175 ACRES - 8 ROOM HOME - 4.71 A. TOBI!

**95 Acre Bath Co. Farm**

2.15 ACRES TOB. BASE

**Maze Auction Co.**

SELLING AGENTS - Ph. 674-6131 - 674-6481, OWINGSVILLE, KY.

AUCTIONEERS - James T. Jones and Roger Hays

For the best results let us handle your next SALE

**175 Acre Blue Grass Farm!**

Livestock, Farming Tools, Feed, Etc. AT ABSOLUTE

**MAZE AUCTION**

SATURDAY, NOV. 21st - 10 A.M.

LOCATED: 1 1/2 Miles North of Bethel, Ky., on State Highway No. 11

175 ACRES - 8 ROOM HOME - 4.71 A. TOBI!

**95 Acre Bath Co. Farm**

2.15 ACRES TOB. BASE



### Thanksgiving Feast at Four State Parks

THANKSGIVING DAY DINNER GUESTS in four Kentucky State parks will be greeted by one of these delicious buffets. Come Turkey Day, the State park cuisine will be in Thanksgiving motif all the way and will feature some of Kentucky's traditionally-fine foods. The four State parks remaining open all winter this year and featuring the Thanksgiving feast are Kentucky Dam Village, near Gilbertsville; Jenny Wiley, near Prestonsburg; General Butler, near Carrollton; and Cumberland Falls, near Corbin. Many families are expected to take advantage of the brief holiday period and enjoy a four-day stay in one of Kentucky's nationally-famous parks.

### LETTERS TO THE EDITOR

## MSC Students Also Help; Library Levy Is Lauded

Editor, The News

The statement was made in the paper last week that the Library Petition in the hands of a friendless "nothing more than a subtle form of pressure." May I advise that the petition method given the signed a chance to know all about the proposition in which he is voting, from the person who is carrying the petition. Otherwise, one may be influenced by wrong statements made by uninformed people, as was proved when the proposition was of the ballot two years ago, at that time too of the tax was going about saying the tax was 7 percent instead of 7 1/2 on the \$100 which would be truly a sizeable tax. It will not hurt anyone and will do immeasurable good to many people.

From my point of view, anyone should be proud to have his other name on a petition showing that he stands for a truly forward looking Community Project.

What will a library tax mean to Rowan County? First, it will mean many more books, and records that can be used in schools. Much has been said about the poor reading ability of school children of today. How can a child be expected to read if he does not have interesting material to stimulate him to read? All modern teaching is dependent on books and more books. We must remember that the child of today has a vast amount more to learn before he can be able to face the world as a responsible and self-sufficient citizen than we did when we grew up. This pressure on learning is increasing as each day passes. Our schools are supposed to be spending each year as \$1.00 per elementary child and \$2.00 per high school child. The schools have not been able to do this. A good public library can help fill the gap.

Then there are the adults. Many like to read and find it both informative and enjoyable. Many more will read for professional learning if the books were available. To buy books

as individuals is expensive. The library we have has done good service considering the funds it has had, but that manager considering what could be done with the money that a tax will raise. The State and Federal Government is back of this program, but first, we must show that we want good library service! This can only be done by passing this small tax which will bring in locally about \$1000. Then the State will furnish a bookmobile, many more books, etc. The library will be open many more hours per week giving all our citizens the chance to enjoy and be informed through the use of good books. Let us be proud to put our name on the petition and say with a resounding word that Rowan County wants to move ahead educationally, both for adults and children!

Don Crisp  
President of Student Council  
Morehead State College

### Louisville Man Heads County History Group

The Kentucky Historical Society has elected Louisville attorney Edward A. Dodd, former president of the Kentucky Bar Association, as its new president. He succeeds Mrs. Charles D. Milliken, Franklin, who had served as the first woman president of the organization. Dodd is a 40-year-old lawyer, former State representative and chairman of the Big Bone Lick archeological project in Northern Kentucky. Other new officers are: second vice president, John Fred Williams, Ashland, former State representative and public instruction; third vice president, Lieutenant General Field H. U. S.M.C., retired, state law librarian from Versailles. Elected to four-year terms on the Society's executive committee are D. Warren Lambert, Berea College history professor; Mr. Michael Heathman, Versailles, chairman of the Woodford County historical markers committee; Enois Swain, Danville, publisher of the Danville Advocate-Messenger; and Mrs. Harry M. Caudill, Whitesburg, historian and wife of the author of "Night Comes to the Cumberland."

### ... HEAD FOR MAYSVILLE YOUR BEST TOBACCO MARKET

HAUL NOW

### Air Defense Unit Lists Job Vacancies

Sgt. Thomas L. Jones today announced that vacancies exist in the Army Air Defense Command at a number of missile bases to which young men now enlisting can be assigned. Included are: Abilene, Tex.; Albany, Ga.; Austin, Tex.; Caribou, Me.; Chicago, Dallas-Ft. Worth, Tex.; Detroit, Kentucky; Ft. Worth, Tex.; Memphis, Tenn.; Miami, Fla.; Milwaukee, Minneapolis, N.Y.; Norfolk, Va.; Omaha, Neb.; Omaha, Philadelpia, Pittsburgh, Pa.; St. Louis, Wash., D.C.; and Baltimore. Jones said men enlisting for these vacancies will be trained in further detail and may be obtained from Jones at the Army Reserve Center here.

## Claig Sprout . . . And His Friend, TIMOTHY TUGMUTTON . . . Sez

DEAR MISTER EDITOR: The fellers at the country store Saturday night was proving they was all good Americans. At the election for President and the Congress didn't please all the fellers but everybody was agreed the voice of the people had to be the law of the land if we was to live, under a democracy. But Zeke Grubb, that ain't nobody yet how he voted, was of the opinion democracy was like the roamsip, it was going to hurt a little bit all the time and folks had the right to hear on hollerin' without getting throwed out of the lodge. For instant, said Zeke, he was reading where 56 cent out of every dollar earned by the American people was now passing through Washington in some form of taxes. Zeke allowed as how he was going to keep on hollerin' about this item, even if they elected Billy Graham for President the next time around. Clem reported he had saw in the paper where a democracy was the most expensive form of government on earth and he was just as well git used to them boys in Washington taking their Jug Hookum agreed with

Yours truly,  
Timothy Tugmutton

## Mental Health Attitude Survey Is Scheduled

The Kentucky Mental Health Planning Commission and staff of the State Mental Health Department's planning division are completing a survey of public attitudes toward mental illness and a study of private psychiatric practice in the state. The studies are part of a comprehensive, state-wide plan for mental health services and facilities to be completed by June 1965. The public opinion survey is being conducted by graduate students in sociology or psychology around the state. A sampling of 1,000 Kentuckians over 18 years of age will be queried on attitudes toward mental illness, knowledge of mental health and illness, and feelings toward newer methods of treatment. A preliminary report on private psychiatric practice reveals that the 22 full-time psychiatrists who reported see an average of 70 patients a month. Seven in part-time practice said they see an average of 17 patients a month. Twenty-nine percent of those patients were diagnosed with mental illness. Lower level managerial and small business people account for 35 percent of the total patients, while clerical, skilled, and semi-skilled make up 27 percent. Some 38 percent in private practice remain to be contacted. The planning work is financed by a \$125,000 Federal grant for the two years ending June 30, 1965.



## Thoughts at Thanksgiving . . .

The warmth of family and friends . . . the spiritual guidance of our house of worship . . . the security of living in a fine community and a home your own . . . the abundance and richness of our great country, where we may live and worship and vote as we please . . . for all this and much more we offer thanks, from all of us to our loyal friends and patrons, a happy and healthy Thanksgiving. Long may Home Loans our speciality at 6%.

### FIRST FEDERAL Savings And Loan Association Of Morehead

MAIN STREET MOREHEAD, KY.

## Higher Prices Seen For Hogs In 1965

Hog prices probably will average higher through the middle part of 1965 than for the same period a year earlier, the University of Kentucky Cooperative Extension Service agricultural economics department said this week in its bi-weekly outlook letter. "Hog prices during the first half of 1964 have averaged only slightly below the first half of 1963," says Wilmer Browning, economist. "Hog slaughter will average lower during the remainder of 1964 and the first half of 1965. Hog prices also will continue higher through mid-1965 than year-earlier levels." Browning said the 1964 pig crop is expected to be seven percent below 1963's and probably will continue to decline during the first half of 1965. He thinks a number of sow farrowing probably will increase.

DEAD HEADS At the price for conciliation, Communist China called on the Soviet Union to abandon peaceful coexistence and join forces to end the threat of U.S. imperialism. "We will. Somebody ought to impress up on Red China that coexistence is preferable to no existence."

### TERMITE TROUBLE?

See or Call CHESTER KISER CONSTRUCTION CO. Phone 784-5109 & 784-5442 Agents for State Termite Control and Chemical Co. Inc.

## You Judge The Appearance We Guarantee The Condition



## Come To Stone For Your Very Best New And Used Car Buy

### 1963 Chevrolet Impala \$2,395.00

4 door - automatic - V-8 - Radio - heater - guaranteed one careful owner - like new in every way.

### 1959 Ford Fairlane 500 \$895.00

2 door hardtop - automatic - power steering - this car is a local Rowan County car that's clean in every way - one of our better buys.

### '62 Chevrolet II Nova \$1,495.00

4 door - 6 cylinder - standard shift - 21,000 actual miles - a little local car that had loving tender care - like new in every way - one of our better buys.

### 1961 Chevrolet Impala \$1,495.00

2 door hardtop - automatic - the sharpest anywhere - better hurry.

### "SAVE WITH STONE"

## STONE PONTIAC-BUICK-GMC, INC.

Phone 784-4937  
Used Cars U.S. 60 East — Morehead, Ky.  
— SAVE WITH STONE —

### COLLEGE COSTS UP

## Most People 'Now Better Off'

If you made \$5,000 in 1939, you need \$12,743 today just to stay even. The family making \$15,000 borrows even more today than does the family making \$5,000. Both statements are made this month by Changing Times in its probe of the common complaint, "The more we make, the less we seem to have."

The Kiplinger magazine believes that overall most people are probably much better off than they used to be, whether they realize it or not. It points out, though, that while the Consumer Price Index has risen only 15 percent over the past 15 years, items that are taking more of the prosperous family's income have risen much faster.

Findings show that ladies go to the beauty parlor twice as often as they did 15 years ago. In 10 years the cost of hospital, room and board has doubled, and estimates are that it will be up almost another 50 percent by 1970. Over the same 10-year period, the cost of sending a child to college for one year has risen another 40 percent.

50 percent. Indications are that there'll be an additional rise of about 5 percent to 7 percent per year from now on.

Exploring the subject "Why You Feel Pinched," the Kiplinger editors note, too, that "as a family increases its income, it adds a great deal more each year to its assets, even though it may not always be aware of the improvement."

"Actually, when your income rises, all expenditures don't go up in the same proportion. Those expenditures that tend to go up faster than income include taxes, insurance, clothing, educational expenses, recreation, gifts and contributions, as well as additions to net worth."

Other items, such as housing, transportation and food, don't go up as fast as income.

Most families are spending more on transportation today than 10 years ago when about 9 percent of all families had per autos, now it's closer to 16 percent.

Although the rise in taxes and prices helps to explain why a

dollar of income doesn't go as far as it used to, most people have actually upgraded their way of living a lot more than they realize. In addition, Changing Times concludes that, while they may not admit it openly, most people are tucking away assets to pass on to their heirs.

**RANGER'S COLUMN**

### Officials Set Site Of Youth Corps Camp

By Joe J. Mauk

Friday, Patrick Healy, Director of the Job Corp from the office of Economic Opportunity, Washington, D.C., and Forest Supervisor Robert F. Collins of Winchester inspected the site selected for the location of the first job corp camp to be located on the Cumberland National Forest. The site is located to the north side of Ky. Highway 77 about eight miles southwest of Frenchburg, Ky. District Ranger Bernie Schreiner, of the Stanton District and District Ranger Robert Reynolds of Morehead District, along with about 30 others interested state and local officials, and interested citizens with representative of the news agencies visited the site. Healy and Forest Service officials were available for any questions concerning the establishment of the site. Healy and Forest Service officials were available for any questions concerning the establishment of the site. Healy and Forest Service officials were available for any questions concerning the establishment of the site.

### ATTENTION

#### Hard of Hearing

Let's Get Acquainted



We have an office in Morehead, Ky. at 640 West Main St. Phone 784-7195

I am Wm. J. McDonald, your hearing service, consultant and counselor. I live here in Morehead and therefore, can be at your service day and night.

We are here to serve the hard-of-hearing any way we can. You can have the best for what a lesser-quality hearing may cost and terms if you desire.

As a special, we will, until Dec. 30, 1964, allow fifty dollars for your old hearing aid on a new Maico.

We have batteries and accessories for most all hearing aids.

Will you please mail us the date of your birth? Month and day only.

Sincerely,  
William J. McDonald, Mgr.

**MAICO HEARING AID CENTER, INC.**

640 W. Main St., Morehead, Ky.  
Branch Office #1, Phone 784-7195

Wm. J. McDonald, Mgr.


# FREE

## 12" RED CANDLE

### when you buy 7 gallons Ashland Vitalized Gasoline

The soft glow of candlelight enhances any holiday setting. And now you can get 12-inch hand-dipped candles free at your Good Neighbor Ashland Oil Dealer's. With every 7 gallons of Ashland Vitalized Gasoline, you get one attractive 12-inch tapered red candle. These candles are smokeless, dripless, and they won't fade. You'll want to get several for holiday decorating in your home. Drive in at your Good Neighbor Ashland Oil Dealer's displaying the "FREE CANDLE" sign.

Offer expires December 31, 1964



**ASHLAND OIL & REFINING COMPANY**

## Roadblocks Will Seek To Stop Thanksgiving Holiday Deaths

State Police will use a combination of radar and roadblocks beginning next week in an effort to curtail Kentucky's rising highway death toll.

Operation Radar and Roadblocks will go into effect at 3 p.m. Nov. 25, three hours before State Police begin counting highway fatalities for the Thanksgiving holiday.

Public Safety Commissioner Lovens said he instructed State Police to implement the program because of the "gravity" of the situation.

Under the plan, police hope to gain maximum use of radar by coordinating its use with roadblocks.

Field commander Leslie Pyles Jr. in charge of coordinating the plan said it will work like this: The state's 16 radar units will be in operation at the same time in operation to monitor throughout the state. Unannounced roadblocks in the same general areas.

Radar units will be staffed by teams of two men in each post.

"Because we have only 16 radar units at this time, all units will be moved at regular intervals from one location to another," Pyles said.

This hit-and-run pattern will be employed at each State Police post for high-accident frequency locations as well as potential trouble spots.

It will be possible to cover all major highways in Kentucky and some major ones, State Police Director James E. (Ted) Bassett said.

Bassett said a recent State Police study showed that 49 percent of fatal accidents this year involved excessive speed and drinking while driving.

"We have isolated the problem, and now we are going to attack it," he said.

Roadblocks will be designed to apprehend drivers who are not licensed or who are driving with a suspended or revoked license.

"Those who are under suspension are very dangerous to high-

way traffic, as they have demonstrated in their past performance that they do not adhere to traffic laws and safe driving practices," Bassett said.

"Through the use of roadblocks we are able to stop them from continuing to abuse driving privileges."

The plan is an attempt to prove the quality of the law enforcement program, Bassett said. The State Police operation has a severe manpower shortage.

Bassett said the technique of using trained radar teams on a 24-hour basis "is our first attempt to get a state-wide impact on radar as an accident prevention aid on a full scale."

"We must get the full value out of what we now have, and we are going to get it from radar with this program," he added.

"This is not a crackdown effort, as we sometimes think of it. This is permanent and will continue to be a part of our program in the future."

## 100 Acres Of Cucumbers Needed For Grade Station

By Adrian M. Razor  
County Agent

Would you like to double your cash crop income this year? If so, you should give serious consideration to growing cucumbers as a cash crop. Those who were present at the meeting last week heard that Davey, extension horticulturist specialist and Woodrow Wilson, fieldman for the Hirsch Canning Company, told how some growers in Kentucky last year made as much as \$1,000 per acre growing cucumbers. This is a crop that is adapted to family production with three pickings usually being obtained from one acre of cucumbers. The crop is planted in early May and harvest is completed by the later part of July or the first part of August.

Production expenses are approximately \$40 per acre including cost of seed, insecticides and all other expenses except labor. If we can get 100 acres signed up this year, the company will put up a grading station here and furnish a man to operate it and work with the growers. As you can see there

## Renowned Pianist Sets Concert Here Tonight

Abbey Simon, world-renowned pianist, will perform on the Morehead State College campus tonight (Thursday) in the second concert of the North East Kentucky Civic Celebrity Series.

Simon also will conduct a piano workshop Friday for piano teachers and their top students as well as Morehead State College piano students.

The Thursday evening concert will be presented at 8 p.m. in Burton Auditorium. Admission for non-members of the Celebrity Series is \$2.

A reception for Simon will be given immediately following the concert in the Home Economics Building. The public is invited.

The Friday piano workshop is scheduled to begin at 9:30 a.m. with lectures and demonstrations by Simon featuring a luncheon will be held from 4 p.m. to 5:30 p.m. in the Doran Student Union. A question and answer period from 5 p.m. to 6:30 p.m. Simon has recently returned

## Toll Revenue From Last Year Up \$248,000

Revenue from Kentucky's highway toll facilities totaled \$566,171 during October, the State Highway Department said this week.

Commissioner Henry Ward said this was an increase of more than \$248,000 over the same month a year ago.

The Western Kentucky Parkway accounted for \$128,311 of the increase. It was opened to toll traffic Oct. 27, 1963.

Cross receipts of other toll facilities for October of 1964 and 1963, respectively:

- Shawtown Bridge, \$24,289 and \$22,242
- Kentucky Turnpike, \$331,263 and \$249,103
- Mountains Parkway, \$81,706 and \$46,706

The last 33 miles of the Mountain Parkway were opened to traffic last December.

## Happy's Famed Carpet Is Cut Up And Sold For Souvenirs

Gov. Edward T. Breathitt Friday sold the first souvenir section of the infamous \$20,000 red carpet from the State Sen. C. W. A. McCann, D. Louisville, burned over \$5 for a 6x6-inch square of the green floor covering that became a political football in the 1955 gubernatorial campaign.

Breathitt said the money accrued from the sale of the mementoes would be used to buy items needed by institutionalized children.

The old green rug was cut up after the carpeting was laid in the governor's office last month.

One-hundred pieces of it was used to cover the floor of the governor's conference room, the remainder was so worn and tattered that there didn't seem to be any use for it.

Breathitt decided to offer

## Medical Self-Help Plan Gets Boost

The medical self-help program of training for Kentuckians, sponsored by the USPHS and the Kentucky State Department of Health, received a boost this week from the Anniversary of the Kentucky Agriculture Extension Service, rural civil defense section.

Kenneth Evans, civil defense specialist, said Kentuckians should be encouraged to complete the self-help course. "It will be valuable to us at all times," he said, "but particularly in case of nuclear attack."

Goal of the course, according to Forest D. Stokes, director of rural extension for the KSHD, is to "replace fear with knowledge." He said the course trains people for survival in times of national

## From Remember Sharp, Woodburn, Va.: I remember...

From Remember Sharp, Woodburn, Va.: I remember that when I was a boy, people were asked to save wheat and rye; they could leave off one slice of bread per day and eat a potato so they could keep our Allies alive.

There were pages of cheap watches in the catalogues and some of the styles are on the market today. Strange as it may seem, Charles Williams' store sold washing machines that were pulled with a gasoline engine and you had to roll a fly-wheel to start it. A belt transmitted power to the washer. I fancy there had to be a man around on wash day to get our neck of the woods washing was done on the old famous washboard. Nice toys were listed in the catalogues—pedal toys for the kids—and plenty of patent remedies were also listed. They offered lots of parts for the Model T Ford, cheap, too, but I guess they were just as hard to get as 35 cents per hour was counted public work money.

Even in the good old days, boys and girls were hard to handle when they were first bitten by the "love bug."

(Send contributions to this column to The Old Timer, Box 69, Frankfort, Ky.)

## Medical Self-Help Plan Gets Boost

disaster when doctors or other health personnel are not available. Object is at least one trained self-help member in each family of four.

There are 16 hours instruction in 11 lessons, Evans points out. Lessons are on radio, fire, fallout and shelter, healthful living in emergencies, artificial respiration, bandaging and splinting, fractures and sprain-transportation of the injured, burns, shock, nursing care, infant and child care, and emergency child birth.

Local health departments or civil defense directors have instruction kits, Evans pointed out. For more details, write the Office of Health Education, Kentucky State Department of Health, 275 East Main Street, Frankfort.

## Replicans See Need For Party Change

The two Republican National Committee members in Kentucky added their support last week to those who are suggesting the party be reorganized.

John Diederich, Ashland banker, said the Republicans need a broader base and a more positive approach to civil rights.

"We must work toward the party is for all the people, not just for the few."

Mrs. Fred W. Lucas, London, said it probably would be "in the best interest of the party" if Dean Buchwerk were to step down as national chairman.

But she added, "There could be more to his favor than we know."

Burch has summoned the national committee to a meeting in January and has been elected as president. He will continue as chairman if the committee votes "no confidence" in the current leadership.

Mr. Lucas also remarked that it would be bad for the party to split into a fight over the leadership.

## Sale Scheduled To Begin Wednesday, Dec. 2

At **DUKE WAREHOUSES** The Burley Center

Mr. Farmer! You Will Want A Crop On This Sale!

Andrew C. Duke—Paul Gilkinson—Dwight Turner, Ronald Ryan—Raytham Cliff—Chas. Hickerson—Kenneth Spencer

Maysville Phone 564-4242

## THAT WAS THE WEEK THAT WAS

THAT WAS THE WEEK THAT WAS... Nancy Ames in the "TW 3 Girl" who sings in the opening theme on NBC's "That Was the Week That Was" celebrates each Tuesday night.

THE PUBLISHER'S PEN

This Has Been Lean Year Everywhere For The Republican Party

Rowan, and area, Democrats are gleefully laughing up their sleeves following the Nov. 3 general election...

The Courthouse is Rowan County's "blue ribbon" ward embracing the area around Morehead State College...

For example, Democrat Congressman Carl D. Perkins was victorious in the Courthouse precinct by 118 margin...

Other aftermaths of the election and local political observations — coalition failed to defeat two incumbent members of the Rowan County School Board...

NBC, CBS, ABC, AP and UPI combined forces, and finances, to gather the returns in the Eastern time belt of Kentucky...

Look for a long primary ballot next May when county officials will be nominated. We could give you, off-hand, the names of about 200 from both parties, who are planning to seek office...

preparates for our granddaughter. As of today, former governor and senator Clement prefer Hiram Lee Westfield for Kentucky's next Governor...

Maybe It Will Be A Nice Winter. A feature analysis in a Kentucky metropolitan newspaper frets the contention of most of our "old timers" whom we have recently quoted that "signs are certain" for a hard winter...

Another of our farmers recalls that the fall of 1936 was the most pleasant in his lifetime until this year. And, he says this was followed by real nice winter weather...

While on this subject, we understand that hundreds of photographers snapped colored pictures of the "rainbow" Bath County scene mentioned in this column while fall leaves were on the trees...

Crop Is About Three-Fourths. Builey has started arriving at the Morehead Warehouses for the first late Oct. 30.

It is likely that buyers will pay a record high because the crop is short and cigarette consumption continues to climb despite the cancer scare and controversy...

Observations In Our Paragraph Form. "Almost" — The football players agreed the field goal attempted by Morehead's Tully Johnson with eight seconds to play against Eastern at Richmond Saturday, missed by a foot or two...

REPLY TO SEATS — The Breathless Sports Center at Morehead, with 10,000 seating capacity in the stadium, is Kentucky's third largest. Only the UK stadium in Lexington and Fairgrounds Exhibition at Louisville hold more.

WAIT AND SEE — We learned at Richmond Saturday that followers of the Maroons think they are "joaded" in basketball this year, an old broiler record refrain...

GOOD PLAYERS — Sometimes these local avid croquet players can be seen on Harve Kegley's well groomed wicket court until the wee hours of the morning...

SHOW-OFFS — Morehead police believe that some ambulance drivers from nearby counties are using their sirens too freely when they reach the Morehead city limits...

EVERY 25 YEARS — An unpleasant observation we approach this Thanksgiving season — World War I started in 1914, World War II broke out in 1939, or 25 years later... and this is 1964, or 25 years after World War II.

COULD BE DRAWN OUT — Don't be surprised if the AFL-CIO strike at Lee Clay Products Company continues for some weeks. This could be bleak Christmas for management and employees alike because a negotiating log-jam is shaping up.

GOOD HUNTING — Reports are that deer are plentiful in the Ragland Oil Field area of Bath County, perhaps the best hunting spot for this animal in all of Kentucky...

Why Pay Rent when you can own a beautiful new home like this for so little cost and such convenient terms?

Wouldn't You Like To Live In A Compact Home That Never Grows Old? Visit Our Big Display Lot where every coach is set up, landscaped and the interior decorated so you can see exactly how it will look on your lot.

Home That Never Grows Old? Visit Our Big Display Lot where every coach is set up, landscaped and the interior decorated so you can see exactly how it will look on your lot.

Why Pay Rent when you can own a beautiful new home like this for so little cost and such convenient terms? Home That Never Grows Old? Visit Our Big Display Lot where every coach is set up, landscaped and the interior decorated so you can see exactly how it will look on your lot.

COMING — We expect to receive information almost any day about hearings for land acquisition in the Cave Run basin. However, with the holiday season approaching there could be delays.

HE LOVED THE FIRE DEPARTMENT — It was a little sad that Morehead's Fire sirens sounded Sunday, the day of Boyd McCulloch's funeral. The fact that Morehead's fire department is rated the best volunteer unit in the Commonwealth can be directly attributed to Mr. McCulloch and his group of dedicated firemen.

DO IT YOURSELF — We suggest that our farmers have their census report ready when the enumerator calls. Rowan has been divided into four districts and the census will probably start next week.

VOLETTES — Political friends say that Social Security got more votes for Lyndon Johnson in Kentucky than any other issue. They rate Goldwater's record in the Senate against farm support as the most important factor in the election.

SKULLDUGGERY — Somebody cut the electric wire (in eight places) leading to the voting machine at Hootown precinct. This was promptly rectified with extension cords as the machines do not require a heavy electric current.

PROBLEM — Morehead College President Adron Dwan has often publicly berated "beer cans" on the campus and instructed the buildings and grounds force to remove them pronto.

FINISHED — Want to see something you'll be proud of if you're community minded? Then drive down to the Rowan County airport at Farmers. The 3,000 foot runway has been blacktopped.

ANOTHER M.D. — St. Claire Medical Center will soon add a new specialist. He is Dr. Hunter Black, a qualified young fellow who has just returned from the Army in Kentucky.

INGENUITY — Cleve Dillon will have home grown tomatoes and watermelon for Thanksgiving. He placed the melons in fodder boxes and waters they with little flavor. Cleve picked the tomatoes green and stored them away from light, in his basement.

DIFFERENT — Pickets at strike-bound Lee Clay Products are smarter than the city boys. Instead of parading around with meaningless signs, they've set up a horse-show pitching grounds and competition is keen with a few side bets.

Adopting Story To Rowan County. Recent arrest of a Moreheadian on charges of possessing obscene material, with revision to fit a local community, also a story we recited in this column.

This is the way the Morehead was a telling bit of a mistake — the denomination was \$15. Chicago counterfeiter made a perfect bit of a mistake — the denomination was \$15.

They spotted a place on the map in Rowan County, Mo., Hootown. (It is really Ellipterville). So, one of the counterfeiter walked in a Hootown store and asked about change. The store-keeper scanned the bill and said, "You could be done in the hills of Stoken Kentucky."

A Morehead bank has a counterfeit bill that looks like a good genuine article. These new lithograph printing methods are creating chaos in the Treasury Department and we would be surprised to see the near future, a change in the currency of the United States. This will create chaos for anybody who has money from the eyes of the Internal Revenue Service.



SHE BACKED INTO A POLICE CAR? OR Our bank Drive-In Window will save you unnecessary parking troubles. Try our Drive-In Window for conveniently cashing checks or banking money.

Citizens BANK - MOREHEAD, KENTUCKY MEMBER F.D.I.C. "GROW WITH US"

MCCULLOCH BP-1 a totally new concept in chain saws! Climbs Rapidly In Kentucky

see this completely new saw today... at MONARCH SUPPLY STORE Morehead, Kentucky

SHOP TALK: Type 90° V-8, O.H.V. Bore: 4.125 in. Stroke: 3.975 in. Displacement: 425 cubic inches

PLAIN TALK: Oldsmobile's new Super Rocket V-8 is the biggest, most advanced, smoothest performing engine ever from Olds. And there are four versions in all—including one with 370 h.p.

'65 OLDSMOBILE The Rocket Action Car! The Rockets are rolling... to your authorized Oldsmobile Quality Dealer!

CHEAP-CHEVROLET CO., Flemingsburg, Ky. ALSO BIKES YOU TV 21'S BEST! "MARLBORO RACE" AND "MERCURY AND MC" ACTIVITY CHECK LOCAL LISTING FOR TIME AND STATION

Now! save on either of these GREAT FLOURS

Robin Hood Flour ALL PURPOSE ENRICHED FLOUR

Just send us the guarantee panel you will find on bags of Robin Hood Flour, either Regular or Instant Blending, together with your name and address.

MAIL THIS CONVENIENT CERTIFICATE TOGETHER WITH GUARANTEE PANEL! Name, Address, City, State, Zip Code, Limit Order Policy - Offer Expires February 18, 1965

Why Pay Rent when you can own a beautiful new home like this for so little cost and such convenient terms? Home That Never Grows Old? Visit Our Big Display Lot where every coach is set up, landscaped and the interior decorated so you can see exactly how it will look on your lot.

SOCIETY

Mr. and Mrs. Foy Spence of Middletown, O., were weekend guests of Mr. and Mrs. Otto Carr...

Plans for the annual Christmas bazaar were discussed at a meeting of the St. Claire Hospital Auxiliary Monday evening. The sale will be held Saturday, Dec. 12...

Christmas wrappings and decorations were studied at a meeting of the Ferns Homemakers Club Friday at the home of Mrs. Hattie Hayes...

Those attending were Mrs. Lucille Lowe, Mrs. Clara Carr, Mrs. Lillie Sullivan, Mrs. Lucille Stevens, Mrs. Beulah Davis, Mrs. Evelyn Ellis, Mrs. Connye Hudkins, Mrs. Lillian Parker, Mrs. Violet Evans, Mrs. Hayes and three guests.

Those from Morehead attending the Morehead-Eastern football game Saturday in Richmond included Dr. and Mrs. Doron Doran, Mr. and Mrs. W. H. Rice, Mr. and Mrs. Robert Laughlin, Mr. and Mrs. George Burgess, Dr. and Mrs. J. K. Smith, Mrs. Guy Penny, Mrs. Earl Bentley, Mrs. Edith Carr, Mrs. Jenny Denton, Mr. and Mrs. Claude Clayton, Mr. and Mrs. C. Z. Bruce and Dr. and Mrs. Harold Holdbrook.

Mr. and Mrs. W. H. Layne and Mrs. W. H. Carter were Sunday visitors in Lexington.

Mr. and Mrs. Rex Chaney and daughter spent the weekend in Lexington, guests of her parents, Mr. and Mrs. Royal Brown, and all attended the Morehead-Eastern game in Richmond Saturday.

Mr. and Mrs. Gary Fouch of East Chicago, Ind. spent the weekend visiting his parents, Mr. and Mrs. Emory Fouch, Morehead Route 3.

Mrs. Mayme Wiley visited last week in Frankfort with her daughter and family, Mr. and Mrs. James Ewart and children.

Mr. and Mrs. John R. Meszer...

Mrs. Dorothy Debord was hostess for the November meeting of the Smile Homemakers Club at her home Thursday. A book report was given by Mrs. Violet Hardin...

The Morehead Day Home-coming Club met Nov. 10 at the home of Mrs. Edith Clifton for a lesson on Christmas ideas and wrappings presented by Mrs. Janet Boyd, home agent.

The club's annual Christmas party will be Dec. 8 at the home of Mrs. Bonnie Thompson, Wilson Avenue.

The marriage of Miss Patricia Antoinette Kidd, daughter of Mr. and Mrs. James L. Kidd of Route 1, Campton, and Willie Hurt, son of Mr. and Mrs. Charles Hurt, also of Route 1, Campton, was solemnized Nov. 7 at Rosedale Church, Rev. Donald Hale officiated at the double ring ceremony.

The bride wore a gown of white brocade satin and a shoulder-length veil. Her sister, Miss Marguerite Kidd was her only attendant. She wore a blue brocade satin dress.

Mrs. Elton Johnson had as her guests at dinner Sunday Mr. and Mrs. James A. Davis of Grayson, Mrs. Walter Calvert, Mrs. O. H. Roark and Mrs. Harlan James. Mr. Johnson who visited for a week in Williamsburg with his parents, Mr. and Mrs. Homer Johnson, returned home Wednesday.

The W.M.S. of the First Baptist Church met Thursday evening at the home of Mrs. Joyce Cole, Sun Street. Presents were collected for a Thanksgiving basket for a needy family.

Mr. and Mrs. Cecil Purvis, daughter, Nancy and niece, Andrea Purvis spent the weekend in Dayton, O. with another daughter, Mrs. Charles Layne and family. While there they attended a football game in which Mike Layne played.

The Betty Robinson Class of the First Baptist Church of Morehead will meet Friday morning at 10 o'clock at the home of Mrs. C. C. Mayhall, Second Street. Mrs. Emily Young, president, will have charge of the gathering.

Mr. and Mrs. Wade Sidney Littell and family of Lexington visited Sunday with Mr. and Mrs. Fred Casary and Mr. and Mrs. Dave Carlson.

Weekend guests at the home of Mrs. Ernest Hayes were Mr. and Mrs. Steve Hellburn and Mr. and Mrs. Ray Becht, all of Cincinnati.

Arch Williams spent the night Sunday in Kenova, W. Va. with his mother, Mrs. Della Mae Henry.

Mr. and Mrs. Harve Mobley spent last weekend visiting with relatives: Mr. and Mrs. Joe Mobley and Mrs. Elton Roe in Frankfort; Mr. and Mrs. Robert Walther and children in South...



Mr. and Miss Breckinridge

REIGNING ROYALTY Diana Jones and Danny Cornett were chosen "Mr. and Miss Breckinridge" recently as a part of the Training School's annual Beta Revue. The affair, sponsored by the Beta Club, honors outstanding students.

MSC Student Ends Stay In Norway

Kentucky's 1964 International Farm Youth Exchange (IFYE) delegate returns home this week after a five-month stay with rural families in Norway. Sue Fritz of Nicholas County arrives in Kentucky after an evaluation tour of the IFYE trip in Washington.

Fort Mitchell; and Mr. and Mrs. Darve Mobley Jr. and family in Cincinnati.

Mr. and Mrs. Jack Helwig and sons, Don and Steve spent the day Sunday with her brother, Bob Moran, and Mrs. Moran in Loveland, O.

Mrs. J. C. Barber Sr. had as her guests for the weekend her son and family, Mr. and Mrs. Jack Barber and son, Richard Clay of Fairborn, O. Mrs. Frances Childen, Cincinnati, was her visitor from Saturday to Wednesday.

Mr. and Mrs. J. E. Blevins of Ashland were weekend guests of her sister, Mrs. Nell Kapp.

Members of the Morehead Night Homemakers Club met Monday at Mrs. E. D. Patton's home for the current lesson on Christmas decorations and wrappings. Miss Janet Boyd, home agent, presented the study.

Those present were Mrs. G. A. Sheets, Mrs. B. F. Penik, Mrs. Stella Patton, Mrs. Lester Hogarty, Grace Apel, Mrs. Elizabeth Mayo, Miss Grace Crothwell, Mrs. W. H. Rice, Mrs. Doris Friley, Mrs. Earl Greene, Miss Edna Patton and Mrs. James Masten, a visitor.

Maysville Girl Heads College Home Ec Unit

Ginny Hudgins, a Junior Home Economics major at Morehead State College, has been elected president of the college chapter's section of the Kentucky Home Economics Association.

Miss Hudgins, a native of Maysville, also serves as president of the Morehead State College Home Economics Club and is studying under a home economics scholarship grant.

She is active in numerous Morehead organizations including the Open Forum Club, Cosmopolitan Club, Student National Education Association, Morehead Council of Presidents and the college newspaper.

TB Hospital Party Slated Dec. 16

The annual party for patients at the State Tuberculosis Hospital in Ashland, will be held Dec. 16, it was announced Thursday.

Groups of individuals interested in providing gifts for patients should contact the hospital either by telephone or mail, Jerry Stapleton, senior social worker at the institution said.

Navy Officer Team To Visit College

The Navy officer information team from Ashland will be on campus at Morehead State College Monday and Tuesday from 8:30 a. m. to 4:30 p. m. for the purpose of administering the officer qualification test to senior and junior men and women for the Naval Officer Candidate School.

Although only seniors and juniors are eligible to take the test, the team will talk to men and women of all grade levels, pointing out the advantages the Navy has to offer regarding a 11 officer programs and in the academic majors that can be put to practical use in the Navy.

Grade School PTA To Meet Monday

The Morehead Grade School PTA will meet Monday in the grade school auditorium. The session is to start at 7:30 p. m.

Kentucky families were host to three IFYE's from other lands as part of the two-way exchange. Sue's returning IFYE group included 41 young people from 23 states who have stayed with families in 16 different countries; they spent 8 w., 10-24 weeks in Washington, D. C. evaluating their experiences before returning home.

The second phase of Sue's IFYE experience begins with her return to Kentucky. Now, she will tell Kentuckyans how her stay in Norway was.

MAJORITY The Nov. 3 vote was a 100 per cent mandate. It was 61.4 per cent of a mandate.



Homecoming Queen

Miss Sylvia Manning, daughter of Mr. and Mrs. Geobal Manning, Route 1, Morehead, resigned over the 1964 Homecoming Ceremonies at the Kentucky School for the Deaf, Danville, Ky. recently. She was selected from a group of nine candidates. Miss Manning, a senior, has been enrolled at Kentucky School for the Deaf since September 1951. Her parents were present for the coronation ceremonies and the homecoming game.

Two Rowan Students Enroll At Berea

Two students from Rowan County have registered for the fall term at Berea College. Hedwina F. Kincaid, a graduate of the Breckinridge Training School and the daughter of Mr. and Mrs. Shade B. Kincaid, enrolled as a sophomore. Charylene Carol Eldridge, a graduate of the Rowan County High School, and the daughter of Mr. and Mrs. Jess O. Eldridge, is also a sophomore.

Berea College is a co-educational liberal arts college offering the Bachelor of Arts Degree and the Bachelor of Science Degree in Agriculture, Business Administration, Home Economics, Nursing and Industrial Arts.

MAJORITY The Nov. 3 vote was a 100 per cent mandate. It was 61.4 per cent of a mandate.



Advertisement for Robertson's Goodyear Store. Features 'Top Value Stamps' and 'Big Traditional Turkey Platter only \$189'. Lists various electronics like transistors, tape recorders, and refrigerators. Includes contact information for Jim Cox, Office Manager.

Advertisement for Morehead Tobacco Warehouse. Promotes 'SELL YOUR TOBACCO ON THE HIGHEST MARKET IN THE BURLY BELT'. Lists products like Dye Spencer, Matt Dykes Auctioneer, and Jim Cox Office Manager. Phone 784-4359.

Advertisement for KU (Kentucky Utilities Company) featuring a modern electric range. Text: 'Good cooks feel right at home with this range. It's fast, automatic and completely dependable. The new flameless electric range has quick-to-heat surface units. Time and temperature controls let you set and hold precise heat (so important in making good meals really good). Good cooks feel right at home with this range. It's fast, automatic and completely dependable. And no matter what model you choose, you get this bonus feature: clean, cool cooking. Electric heat, like electric light, can't make dirt - won't leave soot, or grime. So first class when you buy your new range - make it modern, flameless, electric.'



### St. Claire Hospital 784-4161

**ADMISSIONS**

Nov. 11 - Dianne Thorpe, Morehead; Gloria Perry, Morehead; Ray Greene, Sandy; James Clifford, Graham; Thomas Thompson, Morehead.

Nov. 12 - Rena Taber, Olive Hill; Enda Strade, Elizabethtown; Stella Glover, Jr., Olive Hill; Mrs. Paul Green, Sand Springs; Daniel Howard, Morehead; Mrs. Eugene Buckler, Morehead; Richard Goodan, Morehead.

Nov. 13 - Melissa Waggoner, Hill; Lou Evelyn Wagner, Hill; Stella Glover, Morehead; Mrs. Willard Jones, Morehead; Billy Horseman, Sand Springs; Frances Hunko, Hill; William Sparks, Hill, Ohio.

Nov. 14 - Catherine Braun, Morehead.

Nov. 15 - Barbara Mueller, Morehead; Stella Hill, Morehead; Elaine Bond, Olive Hill; Billy Prince, Sandy Hook.

Nov. 16 - Paul Pondfish, Hill; Georgia Swinford, Hill; Mrs. Raymond Clearfield.

Nov. 17 - Earline Klier, Hill; Mollie Pennington, Hill; Emma McGlothlin, Morehead; Howard Strade, Morehead.

**DISMISSALS**

Nov. 11 - Sena Webb, Mrs. Rex Fox and son.

Nov. 12 - Mrs. Ernie Kelsey, Morehead; Mrs. Hamford Hall, Morehead; Pauline Gregg, Sand Springs; Theodore Hendricks, Donald Bivans.

Nov. 13 - Mrs. Jack Carter and daughter, Diana Thomp-

**ADMISSIONS**

Nov. 11 - Enda Strade, Billy Horseman, Rena Taber.

Nov. 15 - Mrs. Paul Green and daughter, Mrs. Eugene Buckler and son; Gloria Perry, Barbara Mosler, William Sparte.

Nov. 16 - Richard Goodan, Stella Glover, Vada DeHart, Billy Prince.

**BIRTHS**

Nov. 13 - Mr. and Mrs. Eugene Buckler, son; Mr. and Mrs. Paul Green, daughter, Mr. and Mrs. Willard Jones, son.

Nov. 16 - Mr. and Mrs. Raymond Lewis, daughter.

**Vet Insurance Information Now Available**

Veterans interested in the new law reopening G. I. Insurance may obtain a general information sheet at the Veterans Administration Regional Office, 1405 West Broadway, Louisville, Ky.

This printed sheet provides a general outline of what the law allows and what the veteran must do. Sample tables of the monthly premiums in rates are listed.

In Kentucky, Olney B. Owen, manager of the Veterans Administration Regional Office, estimated that almost 250,000 veterans of the World War Two and the Korean Conflict periods are potentially eligible to purchase the new insurance or convert their present policies.

**CHAKERS TRAIL**  
MORHEAD, KY.

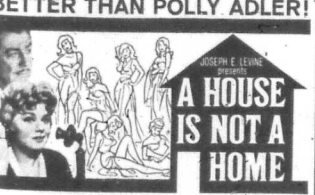
**Tonight Friday and Saturday**

**The Greatest Comedy On Our Screen Since 'The Pink Panther'**  
With The Same Knuckle-Head Private Eye—II Peter Sellers



**A BUCKLE UP FOR A KEVIN EDWARDS PRODUCTION**  
**PETER ELKE SELLERS SOMMER**  
**A SHOT IN THE DARK**  
COLOR BY DeLuxe with PANAVISION

**Starting Sunday**  
**NO ONE KNEW HER BUSINESS BETTER THAN POLLY ADLER!**



starting **SHELLEY WINTERS** as Polly Adler  
**ROBERT TAYLOR** as Frank  
An Embassy Pictures Release  
**Adults Only**

**Starts Wednesday—Nov. 25**  
Musical Laughter! Drama!  
**WAIT DISNEY'S SO DEAR TO MY HEART**

## Poundage Controls On Burley Asked By Advisory Unit

The National Agricultural Advisory Commission (NAAC) proposed last week that federal tobacco production controls be stiffened to regulate the number of pounds each farmer can sell instead of acreage—the acreage he can harvest.

The commission also proposed a system of plastic for two-level price support system under which export prices could be reduced to meet growing competition abroad.

The group said increases in support prices which are due under present legislation "may be unwise at present."

Stand Taken  
Administration farm officials have not taken any public stand on the poundage-control recommendation.

But well-informed sources here said the administration probably would endorse the move—whether it would require new legislation—if it attracts broad backing from the tobacco industry, and tobacco-state lawmakers.

The NAAC, a bi-partisan group of 26 non-government farm experts, advised the administration on farm policy.

It said in a report that the shift from acreage controls on tobacco may be necessary to cut surpluses, to improve quality, and to prevent collapse of the federal system of price supports and production controls for the crop.

Cigarette Sales Slump  
U.S. cigarette sales slumped early this year, contributing to the tobacco surplus problem, following release of the government report linking cigarettes to cancer and other diseases.

Sales have recovered somewhat since, and 1964 may top 1964. But total supplies of tobacco now are at the highest level on record and surplus "carry-over" is rebuilding toward record levels.

Production B Down  
An Agriculture Department report this week showed that a 10 per cent cut imposed in fluorescent tobacco acreage in 1964 brought production down only one-half of one per cent from 1963.

The NAAC reported said the proposed stiffening of controls was advisable for all major types of tobacco—a major crop in southern and border states including North and South Carolina, Georgia, Florida, Kentucky, Tennessee, and Virginia.

The tobacco controls can be enforced only with the consent of growers. A two-thirds vote of approval by farmers is needed before government restrictions can be made binding.

**Kentuckians Pay A Small Road Use Fee**

A new study by the Census Bureau shows that Kentucky's net revenue from road-user taxes is substantially less than in most comparable states.

Maryland, for example, has about the same population but less than one-fourth of Kentucky's state highway mileage. Its road-user tax revenue is \$36 million a year more than in Kentucky.

The figures also disclosed that big trucks have heavier taxes in Kentucky than in most states. A truck to carry a 55,000-pound load would pay Kentucky an average \$2,178 a year compared to the national average of \$1,618 in taxes.

A pickup truck used on a Kentucky farm would pay an average of \$50.50 a year in taxes, while the same truck used by a businessman in Louisville would pay \$66.28.

Kentucky's license fee for small trucks and cars, \$5, is among the country's lowest.

## WHOLESALE Remington Shotguns

Pump - Automatic  
12 Gauge 16 and 20

**Martindale Furniture and Hardware Co.**  
E. Main St. Morehead, Ky.

## FORCE FARMERS OUT Bigger Tractors Make Larger Farms

An Agriculture Department study shows how bigger and better farm tractors are playing a major role in forcing some farmers out of business and encouraging the creation of larger farms.

The study covers use of tractors and tractor-mounted equipment in northeastern Ohio on farms of varying sizes.

In a nutshell, the investigation shows that the farmer with the smaller and older equipment is at a marked disadvantage in competing with his neighbor who has the newer and larger machines.

If it is a matter of difference in production cost and, with farm prices at relatively low levels, small savings in cost often mean the difference between failure and survival.

The department found that implements on the large farms generally weigh larger and fewer than those on the medium-size and small farms.

The size differences might have been greater except that many implements on smaller farms had been bought as used machines traded in by operators of larger farms.

Although a used machine may be as large as its newer counterpart on a large farm in terms of width covered in one trip across the field, its field capacity is likely to be lower.

The used machines lack the hydraulic controls and other features which permit easier and quicker handling of newer machines.

And these used machines often are worked with older and slower tractors. These factors help make the crop unit production costs higher on the smaller farms.

In addition, owners of the older and smaller tractor and equipment have larger repair expenses.

The total cost per acre of use of 13 major farm implements, including associated tractor and driver costs, averaged about 35 per cent lower on the large farms than on the small farms, and about 20 per cent less on the medium-size farms," the study says.

One of the major economies resulting from the higher field capacity of machines on large farms was the lower labor charges per acre of operator labor," the study adds.

The studies show that, on the averages per acre, on small farms examined was \$14.14. This compares with \$12.74 on medium-sized farms and \$9.56 on large units.

Likewise, it shows that the costs of operating plowing, cultivating and harvesting implements with tractors averaged \$19.22 an acre on

small farms, \$11.28 on medium-sized farms and only \$8.74 on large farms.

Original investment in farm machinery ranged from nearly \$6,000 per farm on small units to \$85,800 on medium-sized farms and \$14,400 on large ones.

The smaller and older tractors used fuel less efficiently and have higher repair costs. The smaller and older tractors burn gasoline, while the newer and larger ones use the cheaper diesel oil.

Major crops grown on the farms studied were corn, soybeans and small grains such as barley and rye.

PRESCRIPTION  
"Increase in Knowledge And Note for Ignorance." —Stamford Advocate. Yes, but it's not a note for stupidity, as shown by the fact that many people know far more than they can understand.

**HOME WAREHOUSE**  
Has sold more tobacco, for more farmers, for more money, than any warehouse in Northern Kentucky or Southern Ohio  
**TOBACCO SQUARE, MAYSVILLE, KENTUCKY**

**Stop LOOK Buy**

**THE RIGHT SPOT**  
Convenient? You bet! Walk to all of town  
This is this 3 bedroom dwelling at 151 Lyons Ave. from full price only \$11,000.

**Paradise for the Thrifty**  
3 bedrooms, full basement and use it's modern and on 1 1/2 acre lot, 5 miles from Morehead, Bargain at \$8,700.

**"Rise" Early and See This**  
almost new 3 bedroom house and don't just look and buy - buy for only \$10,500. It's in Early Addition, Clearfield.

**Are You Rentin' and Repentin'**  
stop rentin' and buy this 2 bedroom house and make it your home in Morehead and only \$8,000.

**Love at Purse Sight**  
Let us show you this 5 room ranchette with approximately 10 acres. Just 5 miles out on Cherry Creek. Only \$10,000.

**Big House - Little Price**  
6 room dwelling or business building on large lot at intersection Granton Rd. off Ky. 32 - 3 miles from Morehead \$8,500.

**Just Imagine**  
This 6 room house on half acre lot for only \$3,000, in walking distance of Haldeman school.

**Grande Ole Shade Trees**  
beautiful landscaping - shrubs - truly hanging garden of rare variety - if you want to see this and the home call because it's by appointment only.

**2 Story Brick and Block Bldg.**  
Now occupied as restaurant, theatre and rental rooms - has many possibilities - located in Sandy Hook and don't forget the Grayson Inn - see Roger for price and more information.

**Have Lots Will WHI Save**  
3 good lots - close to town  
**Large**  
2 story store building and 4 room dwelling about 4 miles from city limits and priced to sell.  
**Would You Like to Catch Fish From Your Front Porch**  
see me about a nice lot on beautiful Lake Louisa - in Elliott County and only about 15 miles from Morehead.  
**If You're Tired**  
Looking at inflated prices - make a date with us and see what \$12,750 will buy - yes make close to everything else - walk from College or downtown - by appointment only.

**ROGER LEWIS**  
AUCTIONEER REALTOR INSUROR APPRAISER  
331 MAIN STREET, MOREHEAD, KENTUCKY

# Lexington Minister Heads Ky. Baptists

Franklin Owen, pastor of the Calvary Baptist Church in Lexington, was named president of the Kentucky Baptist Convention in its 157th annual session in Louisville last week. W. R. Pettigrew of Louisville and Thomas Caudill of Beaver Dam were named first and second vice-presidents. L. C. Ray of Louisville was re-elected secretary, and Leo T. Crimmon, also of Louisville, was named for another term as the assistant secretary.

These officers will serve during the 1964-65 year, and will preside at the 158th annual convention at the Immanuel Baptist Church in Lexington next November 10-12, 1965.

Here are some of the actions either taken or announced at last week's Convention:

"Affectionately advised" the 2,200 Baptist churches in Kentucky not to recognize the immersion of persons who had been previously baptized by some body other than "a regularly organized Baptist church."

"Unanimously voted to" urge its institutions not to accept

grants from the Federal government, and named a 15-member committee to work with its Christian Education committee to secure financing for capital needs from private sources.

"Adopted a 1964-65 Cooperative Program (missions) budget of \$3 million, plus an increase of \$100,000 additional for capital needs."

"Adopted the Cedar Grove Baptist Assembly in Shelby County to more than 1,800 acres and receiving a gift of 150 acres and purchasing 130 others."

"Authorized the initial construction of a girls' camp and a boys' camp at Cedar Grove Assembly, with an administration building facility and ten cabins for each."

"Adopted a goal of 100,000 tithe to be enlisted in Baptist churches in 1965."

"Renewed from the market the offer to sell 492 acres of the Glen Dale Children's Home near Elizabethtown."

"Liberalized the policy regarding the acceptance of designated gifts by its educational institutions for capital needs."

The Convention closed with a huge Youth Night service at Freedom Hall, with Billy Graham as principal speaker. Five thousand young people from churches throughout the state came by chartered buses and cars to form a matted choir, and thousands of other came to hear them sing and to listen to the message of Dr. Graham.



## Christmas Seal Drive Launched

GOVERNOR and Mrs. Edward T. Breathitt and their children help lick tuberculosis and other respiratory diseases by affixing Christmas seals to their holiday cards and letters. The Breathitts are (from left) Linda, Edward Jr., Governor, Susan, Mrs. Breathitt, and Mary Fran. Kentucky's annual Christmas seal campaign began this week. Proceeds go to research and other means of fighting TB and related diseases.

## 15 Percent Of Cars Fail Test

Nearly 15 percent of the approximately three-million cars and trucks examined in the 1964 national vehicle-safety check failed to get a passing grade.

As in years past, faulty lights topped the list of items needing attention. Hazardous brakes, exhaust systems, and subpar tires followed in order. The annual safety check is sponsored each summer by the automobile industries' highway-safety committee and Look magazine, with the cooperation of the Association of State and Provincial Safety Coordinators.

Thomas R. Reid of Dearborn, Mich., chairman of the automobile industries' committee and director of civic and government affairs for Ford Motor Company, released results of the 17th annual safety check.

Reid said of the program: "When three-million motorists voluntarily take their cars

in for a safety check, that shows the family car is safe driving condition."

"Secondly, the 56 percent returning the car promptly for a recheck, after failing the first exam, show that motorists don't take lightly the finding that their cars are unsafe. Undoubtedly, a great many others who found their cars were in hazardous shape had the faults corrected and did not return for a recheck."

The safety check is the only nationwide program of its kind. It is conducted primarily in the 31 states which do not require periodic motor-vehicle safety inspections. Since 1954, more than a 70-million-vehicles have been checked.

Reid said that the checks are conducted in 3,737 communities, counties, military installations, industrial plants, ten-

Total rejected % of on cars. These and Trucks exam

Rear lights	89,302	20.4
Stop lights	57,507	13.1
Front lights	56,817	12.9
Front turn signals	49,741	9.9
Rear turn signals	38,460	8.8
Brakes	37,827	8.6
Exhaust system	25,455	5.8
Tires	22,548	5.1
Wipers	18,709	4.2
Glass defects	14,219	3.2
Horn	14,181	3.2
Steering	12,641	2.9
Windshield washers	6,706	1.3
Rear-view mirrors	4,404	1.0

### U.S. COPTERS CRASH

During the first day of the biggest U.S. naval amphibious maneuvers since World War II, two U.S. helicopters collided and crashed in flames off the coast of Spain. The 2nd U.S. Marine Expeditionary Force was comprised of the 2nd Marine Division and the 2nd Fleet Air Wing. Nine of the 22 men aboard were killed.

### KENTUCKIANS LAGGED

## Six Of Ten Americans Voted

Slightly more than six out of every 10 Americans of voting age took part in the presidential election which the Census Bureau reckoned were of voting age on election day.

The turnout was with the 63.1 percent of 1960.

This year's figures will rise when still uncounted absentee ballots and fund party votes are added to the total.

On the basis of incomplete returns, Utah and the nation with ballots 76.9 percent of its voting age citizen casted presidential ballots. Close behind were Minnesota with 76.4 percent and Idaho, the 1960 leader, with 75.3 percent.

## Here Are The Facts About Your Turkey

Although any time can be "turkey-time" with an attractively priced turkey on today's market, Thanksgiving is still the traditional time to serve this delicious bird. Mrs. Letta Japers, Livestock Editor of Kentucky Extension marketing specialist, gives some suggestions on selecting turkey for your Thanksgiving dinner.

"You can buy either a large or a small turkey; you'll usually freeze turkeys on the market, but, if you prefer a fresh bird, these are also available. You can find ready-stuffed turkeys, or you may want to stuff your own. You can buy turkey parts, too, such as breast and thigh, and boneless turkey rolls and loo, with combinations of about 60 percent white meat and 40 percent dark meat, are especially popular this year."

When deciding what size turkey to buy, remember that the heavier the bird the more edible meat it yields -- in other words, whole birds give more servings per pound than small ones. Perhaps you and a neighbor may want to purchase one large turkey for both your families, thus taking advantage of a lower price and higher yield per pound. Your butcher will cut the turkey in half for you.

Southern states as a whole showed a sharp increase in percentage of age-qualified population voting while most of the rest of the nation fell behind the 1960 pace. Of the 14 states which showed gains, 10 were in the South. Only North Carolina had a slight decline.

This could be attributed to various factors: the determined Negro registration drive in most Southern states; an end of the poll tax as a requirement for voting in five Southern states; and the interest sparked by Goldwater who carried five of these states in the South and Southwest.

The biggest percentage increases were registered by Georgia, up 3.2 points to 59.4 percent of the voting age population. Of the two lowest, all to 26.73 percent, were Alaska and Virginia, up a. 1 to 41 percent.

Despite the gains, Dixie still trailed the nation in participation. Of the 12 lowest, all with 50 percent or less, 10 are in the South. The other two are Alaska and the District of Columbia.

Of the 36 states which showed a decline in participation from 1960, Massachusetts and Missouri led the way, each falling 9.1 points to 66.3 percent.

Kentucky was among the states showing a decline. There were 33 percent of the eligible voters who cast ballots, compared with 59.1 percent in 1960. Goodwill figures show 1,001,812 ballots cast in Kentucky.

**FISHIN' TIPS**  
NESTING BLUEGILLS CAST OFF A DISTINCT ODOR WHICH WILL LEAD YOU RIGHT TO THEM

**Jerry's RESTAURANT**  
E. Main St. at College Boulevard  
Morehead, Ky.

**TAPESTRY FOR HOME**  
Latest assortment in St. Peter's Basilica at Vatican City is this tapestry honoring the memory of 28 African martyrs, recently canonized as Saints of the Roman Catholic Church.

**ALWAYS A LEADER**

**A High Average Warehouse On A High Average Market**

**MAYSVILLE WORLD'S FINEST TOBACCO MARKET**

**Clark & Finch ON TOBACCO SQUARE**

THE HOUSE OF PERFECT LIGHT

**LOCATED 10 MILES FROM MOREHEAD ON A BLACK TOP ROAD, SCHOOL BUS, MAIL AND MILK ROUTE**

**Business Residence New Listing Rental In One Package**

General store building approximately 30x24 ft. with full stock of merchandise. Includes 1 meat case and meat slicer, 1 pop case, automatic machine, cash register, show case and one pair of scales. Gas tanks are installed. Good neighborhood.

6-Room frame house with bath, 3 bedrooms, 2 large closets, front porch and carport. Interior walls are sheet rock, hardwood floors, storm door and windows. Kitchen has built-in cabinets. The land site is 2 acres approximately with plenty of building lots. Half acre tobacco base. Water supply consists of one well, pond and cistern. This is ideal property for the right family.

4-Room frame house. Interior walls are sheet rock and hardwood floors -- some built-in kitchen cabinets. Rental property for a retired couple or newly weds.

See Us For Building Lots Or Any Of Your Real Estate Needs Before You

**BUILD - BUY - OR BORROW**

**H. H. LACY**

REALTOR BROKER AUCTIONEER

PHONE 784-5750 GLADYS M. LACY, Salesman MOREHEAD, KY. Apprentice Auctioneer

**this week's patterns**

BY AUDREY LANE

The Slingshot Jumper

**Bath Sundaes**

831

Dress Pattern No. 3378. The Slingshot Jumper. Ask how you fit jumper to make: no buttons, no snaps, no zippers. No wonder it's a hit this season. No. 3378 comes in sizes 10, 12, 14, 16, 18. Size 14 takes 2 1/2 yards of 35-inch fabric of 1/2 yards of 52-inch.

Needlework Pattern No. 831. Bath Sundaes. Both sundae made from washcloths are quick and easy to create. Pattern No. 831 gives the instructions on the sizes are adjustable.

Our Fall Winter Needlework Book containing a coupon for a pattern of your choice is 50 cents.

Send 35c for each dress pattern, 25c for each needlework pattern. Add 5c for each pattern for third class mailing and 10c for each pattern for first class mailing to: AUDREY LANE BUREAU, Box 2490, New York 1, N.Y.

**THANKFUL YOU BUY YOUR V STORE**

**GILLETTE RIGHT GUARD DEODORANT**

79c Size 54¢

THE FAMILY DEODORANT

**ALUMINUM COOKIE SHEET SEAMLESS**

54¢ REG. 79c

**LANOLIN PLUS GLYCERINE & ROSEWATER LOTION**

12 Oz. 99¢ SIZE 64¢

SOOTHES - SMOOTHS SOFTENS HANDS, FACE AND BODY

**LADIES HEAD SQUARES**

37¢ HAND ROLLED ASST. COLORFUL PRINTS 32" x 32"

**Head & Shoulders Shampoo OR LOTION**

68¢ BOUNTIFUL SAVINGS

**MIRRO ALUMINUM FOIL**

48¢ Pkg. of 2-25" Rolls With Free Butter Melter

**CERAMIC WALL PLAQUES**

87¢ ANIMALS & BIRD FIGURES A PAIR Rockingham and Gold Reg. \$1.29

**BRACH'S FRESH CHOCOLATES**

44¢ Choice of Pure Milk Chocolate Caramels, Mints, Coconut Creams, Peppermint Patties and Nougats Reg. 65¢ Lb.

**PIERCE'S**

Your Friendly 5c & 10c Store

MAIN STREET - MOREHEAD, KY.





**SMOOTH STRIP** — The landing strip of the Morehead-Rowan County Airport at Farmers this week was getting final touches of blacktopping with only a parking apron remaining to be surfaced. The runway is now open to aircraft. Blacktopped at a cost of \$94,000, the 2,900-foot strip is now ready to be lighted and with completion of this phase the airport will be the finest and most modern in the area. Lewis and Clark is the contractor on the job.

**\$56 FOR EDUCATION**

**Local Government Costs \$85 Each**

President of Rowan County, the cost of local government is greater or less than it is for people in other areas? The answer is found in a study of municipal, county and country operations which is the local debt, compared with that elsewhere? For the first time in five years, the census bureau has made a detailed study of expenses in each of the 3,100 counties throughout the United States. The results are reported in the current Census of Government.

United States was \$214 per capita and, in the State of Kentucky, \$185. In 1962, it was \$210. The study shows that in the various counties, township, municipal and district governments in the nation and to provide the public with services in the fields of education, highways, health, welfare, police and fire protection, sewerage and sanitation, parks, housing, libraries and the like.

**OUR NEW 1965 CHRISTMAS CLUB IS NOW OPEN**



Join it today... and have the money to spare for the best Christmas gifts, holiday fun, other year-end expenses. You'll find our 1965 Christmas Club the easiest, surest way to save for an even merrier, prepaid Christmas next year—a more bill-free January thereafter! You are most welcome here. Come in often!

**PEOPLES BANK OF MOREHEAD**

**Complete Ambulance Service**  
**Oxygen Equipped**  
**"Equipped To Serve You"**  
Member of Kentucky Funeral Director's Burial Association  
Authorized To Service — Burial Insurance Contracts Issued by COMMONWEALTH LIFE INSURANCE CO.

**LANE FUNERAL HOME**

Phone 784-1134 — Morehead, Ky.

**CURT'S Auto Fair and Bargain Barn**

The best in new and used cars. 30 years in business. Also the house of 10,000 Bargain Barn Items. Come on up Your Ole Buddy, CURT HUTCHINSON

**McCullough**

(Continued from Page 1) married Sept. 28, 1919, passed away Nov. 14, 1962, exactly 43 years to the day prior to his life.

**35-Gallon**

(Continued from Page 1) rained before U. S. Commissioner Thomas Burchett in Ashland. He posted bond. Confiscated at the Turner residence also was a truck in which "moonshine" was found, along with a sawed-off shotgun, which had a seven-inch barrel.

**Fair Leaf Entries Must Be Fixed Now**

Kentucky State Fair, Inc. has not yet received the entries for the tobacco division... The entries should be fixed now... Take about six bushels of each...

**Volleyball Play To Open Tonight; Knitting Set**

Play opens tonight (Thursday) at Brookhaven Training School... The opening contest will pit the Greenfield Paper against...

**Trade at Home**



**Should it Happen... Make sure you have BLUE CROSS and BLUE SHIELD**

**Farmers' Opinions on Tobacco Programs Are Sought By State**

The State Department of Agriculture wants to know Kentucky farmers' opinions on the best tobacco program to adopt. "Specially," State Agriculture Commissioner Wendell P. Butler says "we want the most realistic program that will bring about more rapid improvements in total production and at the same encourage the production of a higher quality leaf."

**Stock Dividends Increase By \$853 Million In 1964**

Cash dividends on common stock paid in the first nine months of the year by companies listed on the New York Stock Exchange exceeded the payment for the comparable 1963 period by \$853 million, a gain of 10 percent.

Each year, more and more Kentuckians are turning to the dependable protection of Blue Cross to help them meet hospital bills and Blue Shield for help in meeting medical-surgical bills. Blue Cross and Blue Shield have never cancelled protection because of age, health, retirement, or an incurable condition.

MAIL THIS HANDY COUPON TODAY! BLUE CROSS and BLUE SHIELD 2101 Boulevard Road Louisville, Kentucky 40205

**JFK Memorial Set Sunday At U Of K**

A statewide memorial service for the late President John F. Kennedy will be held at the University of Kentucky Memorial Coliseum Sunday, the first anniversary of his assassination.

Thanksgiving Sale On All Furniture and Appliances From Thursday Nov. 19th to Thursday Nov. 26th

Table with 2 columns: Item Name and Price. Includes 7 Piece Breakfast Set, Recliner and Swivel Rocker, 2 Piece Kroehler Living Room Suits, Serta Box Springs and Mattress, 2 Piece Early American Living Room Suits.

All Other Furniture and Appliances Reduced to the Bottom. Thanksgiving Turkey Will Be Given Away To Everybody That Makes \$100.00 Purchase. Hurry — Hurry — Hurry First Come — First Served Only 22 minute drive from Morehead

Peoples Furniture Store Owingsville, Kentucky Open Weekdays 7 A.M. to 7 P.M. Saturday 7 A.M. to 10 P.M.

# FOOD SUGGESTIONS FOR FESTIVE MEALS!



Want to enjoy delicious taste tempting foods on Thanksgiving Day? Then shop at your friendly IGA... where quality is high, selection wide, and prices low!

# IGA

## THANKSGIVING VALUES

TURKEY'S TASTY with  
Minot or Conway  
**CRANBERRY SAUCE**  
Whole or Jellied...



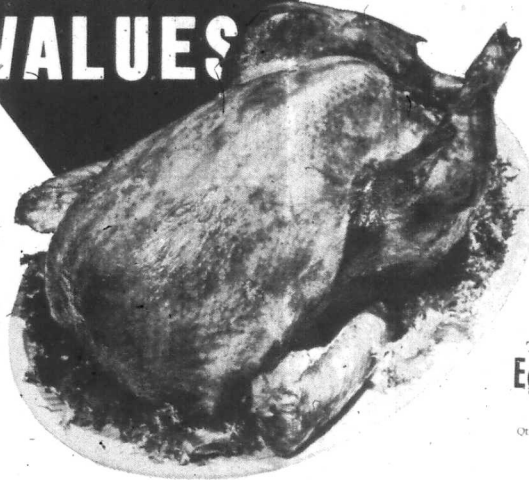
16 oz.  
**2 FOR 39¢**

IGA Fancy  
**Mince Meat** ..... 9 oz. Pkg. **25¢**

Hunts  
**Peaches** No 2 1/2 Can **3 For 79¢**

Libby  
**Fruit Cocktail** 303 Can **2 For 49¢**

Tabletite  
**Margarine** 1-lb. ctn. **2 For 39¢**



Tender  
Plump

# Turkeys

Land O Lakes  
16 lbs. & up

HENS 10-14 lb. Average **lb. 35¢**

HENS 5-9 lb. Average **lb. 41¢**

# 31¢

Royal Guest  
**Stuffing Mix**

Herb Seasoned  
8 oz. **29¢**  
pkg.

Tabletite  
**Egg Nog**

Or Can **59¢**



**Tabletite Turkey Timetable**

Good News! The roasting time for turkey has been reduced to recommendations from the National Poultry & Egg Board.

Wise homemakers serve Tabletite Turkeys (for quality) and start about 20 to 30 minutes ahead of schedule to allow for possible delays. Also plan time for turkey to set, to arrange of platter, and to make 'gravy'.

The following schedule is the latest, and presented here just as a guide to help you.

READY TO COOK WEIGHT	PRE-HEAT OVER TEMP.	INTERIOR TEMP.	ROASTING TIME GUIDE
6 to 8 lbs.	325° F.	185° F.	2 1/2 hrs.
8 to 12 lbs.	"	"	2 1/2 - 3 hrs.
12 to 16 lbs.	"	"	3 1/2 hrs.
20-24 lbs.	"	"	4 1/2 - 5 1/2 hrs.

Turkeys roasted in foil take less time, but a hotter oven...

4-8 lbs.	400° F.	185° F.	1 1/2 - 2 hrs.
8-12 lbs.	"	"	2 1/2 hrs.
12-16 lbs.	"	"	2 1/2 - 3 hrs.
16-20 lbs.	"	"	3 1/2 hrs.
20-24 lbs.	"	"	3 1/2 - 4 hrs.

A HAPPY THANKSGIVING TO YOU AND YOURS!

**Miracle Whip** KRAFT **39¢**  
Qt.

**Shortening** SNO-KREEM **59¢**  
3 lb. Can

Center Cut

# Pork Chops

lb. **59¢**

Rib End Loin PORK ROAST lb. **33¢** Loin End PORK ROAST lb. **39¢**

**Brown 'n Serve Rolls** 12's Pkg. **19¢**

**Tabletite BUTTER** 1-lb. Ctn. **69¢**

**ZESTA SALTINE CRACKERS** 1-lb. Box **4 for \$1**

**HUNTS TOMATO CATSUP** 14 oz. Bottle **2 for 29¢**

**STOKLEYS FANCY PUMPKIN** 303 Can **10¢**

**Corn** Whole, Kernel, cream style 303 can **3 for 49¢**

**Sweet Peas** 303 can **3 for 59¢**

**Sweet Pickles** 22 oz. Jar **39¢**

**Olives** 10-oz. icebox jar **39¢**

**Tissues** 400 ct. **5 for \$1**

**Butter Kernel Pie Pumpkin Mix** 303 can **2 For 39¢**

**Wilderness Pie Fillings** Apple Lemon Mince 303 can **3 For 89¢**

**Royal Gelatin** 6 oz. Family Size **3 For 39¢**

**Royal Gold ICE CREAM**  
Assorted Flavors **59¢**  
1/2 Gal. Ctn.

Heavy Duty  
**Reynolds Wrap** 25 ft. roll Extra wide **49¢**

Philadelphia Brand  
**Cream Cheese** 8 oz. pkg. **29¢**

IGA Frozen  
**Grape Juice** 6 oz. can **2 for 39¢**

IGA Frozen  
**Strawberries** 10 oz. pkg. **2 for 49¢**

IGA Frozen  
**Orange Juice** 6 oz. can **4 for 89¢**

Mortons Old Kentucky Recipe  
**PUMPKIN PIES**  
**4 For \$1**



Fresh Lean  
**GROUND BEEF**  
lb. **39¢**

Kraft  
**Marshmallows** 1-lb. pkg. **19¢**



Plump Tender  
**BAKING HENS**... **37¢**

Fresh  
**OYSTERS** 12 oz. Standards **89¢**

Tabletite Pork  
**SAUSAGE**... 1-lb. Roll **33¢**

IGA egg  
**Noodles** 12 oz. pkg **25¢**

Fishers  
**Mixed Nuts** 13 oz. can **79¢**

Gold Medal  
**Flour** 25 lb. Bag **\$1.98**

# TABLEFRESH Cranberries

1 lb. pkg. **25¢**

Sweet  
**Potatoes** 3 lbs. **29¢**

Parcel  
**Celery** stalk **19¢**

Florida Juice  
**Oranges** Doz. **39¢**

Fresh  
**Sage** Best For your dressing pkg. **19¢**

8:00 A.M. - 8:00 P.M.  
MON. thru. SAT.

# Allen's IGA FOODLINER