

18,000 Readers

This newspaper is read by almost every home, with buying power in the Morehead market area of 90% concentrated in Rowan County.

# The Morehead News

Formerly Rowan County News—Name Changed January, 1963

PRICE OF \$20 TO \$25 FOR CUTTING TEARING OR MUTILATING NEWS PAPERS OF ANY KIND IS SUBJECT TO PUBLIC LITIGATION. See Ky. Stat. Sec. 192.50

Volume No. 81

Member Kentucky Press Association

MOREHEAD, KENTUCKY, THURSDAY MORNING, JULY 30, 1964

Member National Editorial Association

Number Thirty-Of

## Rowan County Fair Resumes Next Week At Leaf Warehouse

After a lapse of one year due to the lack of community interest, the annual Rowan County Fair will be resumed here next week.

The three-day (Thursday-Friday-Saturday) event will be held at the new Morehead Tobacco Warehouse, east of Morehead on U. S. 60.

Russell Brown is in charge of the fair, which is expected to attract entries from all segments of the agricultural community, including 4-H, FFA and PMA members, well as from adult farmers and beef and dairy cattle raisers.

A talent elimination contest will open the event Thursday at 7:30 p.m. and the champion ship in the talent division will be held at 7:30 p.m. Saturday.

Friday's scheduled activities include the beef show at 10 a.m., a tractor driving contest at 1 p.m., a greased pig race at 2:15 p.m. and special entertainment at 7:30 p.m.

Saturday evenings—in addition to the talent competition—will include a pet judging contest at 10 a.m. and a dairy show at 11 a.m.

The fair was temporarily suspended in 1963 because of what is called a "lack of interest on the part of sponsoring businesses and organizations."

The complete program list, program and rules of the fair may be found elsewhere in this issue of The Morehead News.

## Mrs. Ollie Ferguson Succumbs

Mrs. Ollie Belle Ferguson, the wife of Ross Ferguson, died last Wednesday at her home in the Follower Addition. She was 67.

A native of Elliott County, she was born Oct. 31, 1896, a daughter of the late John and Lina Sparks Mabry.

Surviving are the husband, and three children: Eugene Ferguson, Irwin, O.; Noah Ferguson, Springfield, O.; Clayton Ferguson, New Castle, O.; and Daniel Ferguson, Cincinnati, O.

Surviving brothers and sisters are Jack Mabry, Spring field, Oscar Mabry, South Duana, O.; Emery Mabry, J. J. Mabry, and Mrs. Nora Slagter, Elizabethtown.

Funeral services were held Friday at 11 a.m. in the Holkman Church of God. Rev. Jake Plank and Stewart Caudill officiated.

Burial was in Mabry Cemetery in Elliott County. Shaky Funeral Home cared for the arrangements.

## New Priest Is Assigned To M'head

Rev. Theodore Stanley has been appointed assistant pastor of the Church of Jesus Our Savior, Morehead, Rev. Edward Haggerty pastor, announced this week Fr. Stanley came to Morehead from Buck Creek, Ky., where he spent the past year in special training at the Pius XII pastoral center, Ripon, Wis. He studied for the priesthood in Milwaukee and Cincinnati, where he was ordained in 1963.

In Morehead he joins Rev. Edward Haggerty pastor and Rev. John Carrington, assistant, in administering the parish. Jesus Our Savior, which comprises the counties of Rowan, Bath, Carter, Elliott, Lewis, Magoffin, Menifee and Morgan. Fr. Stanley will serve the Morgan County area, with headquarters at the Priory of Peace Chapel, West Liberty.

## Cline Arrangements Are Incomplete

A Rowan County native, Lowell Cline, died Monday in Veterans Administration Hospital, Indianapolis, Ind.

Funeral arrangements are incomplete. The body is at Shaky Funeral Home.

## Summer Sports Sessions Set In Ashland

The fourth annual summer workshop of the Kentucky Division for Girls and Women's Sports will be held at Paul Blazer High School, Ashland, Aug. 27-30.

Nan K. Ward, an instructor in physical education at Morehead State College, is director of the workshop.

Activities for the workshop will include basketball and soft tennis. Participants will be from Western Carolina College, Cullowhee, N. C. and Ellen Griffin, University of North Carolina, Greensboro, N. C. will serve as consultants.

There will also be a dance section workshop on Wednesday, Aug. 26, prior to the opening of the D. G. W. S. workshop.

## J. H. Manier Is Claimed In Lexington

John H. Manier, retired employee of Ford Motor Company, Detroit, died Saturday at 6:30 a.m. in God Samaritan Hospital, Lexington. He was 74.

A Fleming County native, Manier was born Jan. 16, 1900. He was a son of the late W. C. Manier and Elizabeth Foster Manier.

He retired in 1965 after 21 years service with auto manufacturer and lived in Rowan County until 1962 when he moved to Aberdeen, O. to make his home with a daughter, Mrs. Frances Lowe and family.

Manier was a member of the First Baptist Church of Detroit.

Surviving are three children: Mrs. Louise Clarence Babb, Mrs. Louise Clarence Babb, Mrs. Louise Clarence Babb, Milford, O.; John Robert Manier, Gosholt, O. and Homer Manier, Forbes, Mo.

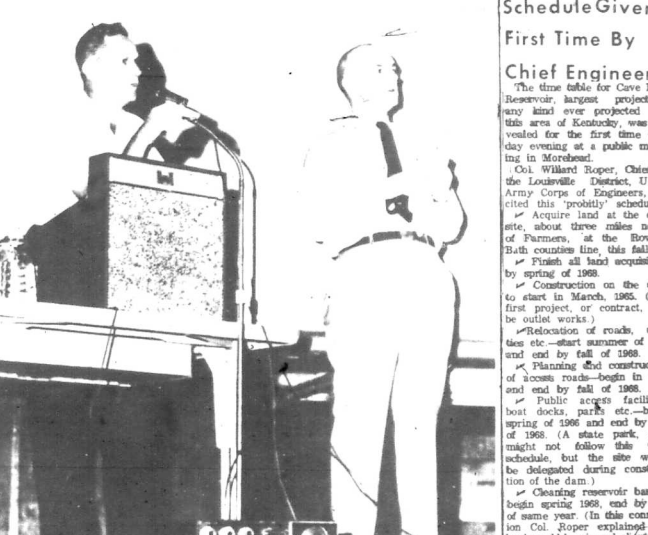
A sister, Mrs. Charles Bowman of Clearfield also survives.

Funeral services were held Tuesday in Mayesville. Rev. C. Cooper officiated.

Burial was in Mayesville Cemetery.

Palbearers were Jack Baldwin, Fred W. Kautz, Jr., Fred White, Robert Adley, Leslie McClain and Lawrence Shelton.

## Cave Run, Time Table Calls For Completion By The Fall Of 1968



EXPLAINING PROJECT—Dr. Alec Spencer, the various aspects of the \$25,000,000 project which will be carried out near Farmers, Col. Roper, for the first time, detailed the time table for beginning of construction and other phases of Cave Run Dam.

## 40 Years Service

Dr. Fletcher B. Stewart, dean of the Fletcher School of Law and Diplomacy at Tufts University, will be the featured speaker at a recognition dinner for Henry C. Haggan on the Morehead State College campus tomorrow (Friday).

Haggan, head of the agricultural department at Morehead, has devoted his life to rural youth and is one of the most honored men in agriculture in Kentucky.

Over 200 friends and admirers are expected for the 7 p.m. banquet in Doran Student House. Tickets are \$2.50 and may be purchased from Dr. C. Nelson Cooper or Miss Inez.

## Dinner Friday Honors H.C. Haggan

Dr. Fletcher B. Stewart, dean of the Fletcher School of Law and Diplomacy at Tufts University, will be the featured speaker at a recognition dinner for Henry C. Haggan on the Morehead State College campus tomorrow (Friday).

Haggan, head of the agricultural department at Morehead, has devoted his life to rural youth and is one of the most honored men in agriculture in Kentucky.

Over 200 friends and admirers are expected for the 7 p.m. banquet in Doran Student House. Tickets are \$2.50 and may be purchased from Dr. C. Nelson Cooper or Miss Inez.

## Schedule Given First Time By Chief Engineer

The time table for Cave Run Reservoir, largest project for this area of Kentucky, was revealed for the first time Friday evening at a public meeting in Morehead.

Col. Willard Roper, Chief of the Louisville District, U. S. Army Corps of Engineers, revealed this "provisional" schedule for the first time Friday evening at a public meeting in Morehead.

Acquire land at the dam site, about three miles north of Farmers, on the Rowan-Bath county line, this fall.

Finish all land acquisition by spring of 1968.

Construction on the dam to start in March, 1965. (The first project, or contract, will be out of work.)

Relocation of roads, utilities etc.—start summer of 1965 and end by fall of 1966.

Planning final construction of dam, roads, etc.—begin spring of 1966 and end by fall of 1968. (A state park, etc., might not follow this timetable but the site would be delegated during construction of the dam.)

Clearing reservoir basin—begin spring 1968, end by fall of same year. (In this connection Col. Roper explained the land would be cleared about two feet above the seasonal pool, but would not be disturbed to a maximum (spillway) level.)

Completion of the dam—fall of 1968.

Drainage area—826 square miles. (The original target date for completion of the project had been estimated by engineers in 1963, but Col. Roper's statements indicated this had been advanced four years, meaning the reservoir would be filled to seasonal pool by the spring of 1968.)

Col. Roper emphasized, and reiterated, that the time schedule was "provisional" and "tentative" and depended upon many factors, including appropriations from the Congress.

Also brought out at Friday's meeting was the fact that the dam will be a concrete gravity dam about 136 feet high above the spillway (a safety measure in extreme high waters) will be 280 feet.

—Turn to Page 11

## Rawcel Heights Opening Delayed Until August 15

Final inspection of Rawcel Heights, Morehead's new, federally-financed low-rent housing project, is scheduled for next Tuesday and the first tenants are expected to move in by Aug. 15.

The inspection had originally been delayed last Tuesday, but was delayed a week because of some construction problems.

W. E. Crutcher, chairman, and William H. Layne, vice-chairman of the Morehead Municipal Housing Commission, will represent Morehead at the final inspection. Others who will be present include representatives from the Atlanta regional HHA offices, the architect-engineer, and prime contractor.

The 30 duplex units of one, two, three and four bed rooms, plus an administration building, cost over \$400,000. The Commission expects to apply for 70 more, as soon as Rawcel Heights is occupied.

## Three Wrecks Investigated By Officers

Two automobile accidents Friday and one Saturday, which were being investigated by the State Police, are reported for Rowan County this week.

All of the mishaps were classified as minor.

A Friday accident involved a car being pulled out of a side road into KY 519 in Clearfield. The vehicle being shoved was investigated by Woodrow Wiseman, 23 of Masheed St. 2.

A car being driven by Earl Brown, 46 of Morehead Rd. 4.

State Police said the Crum vehicle, traveling east on U.S. 60 about a mile east of Morehead, skidded and went into a ditch.

—Turn to Page 11

## Three Wrecks Investigated By Officers

Two automobile accidents Friday and one Saturday, which were being investigated by the State Police, are reported for Rowan County this week.

All of the mishaps were classified as minor.

A Friday accident involved a car being pulled out of a side road into KY 519 in Clearfield. The vehicle being shoved was investigated by Woodrow Wiseman, 23 of Masheed St. 2.

A car being driven by Earl Brown, 46 of Morehead Rd. 4.

State Police said the Crum vehicle, traveling east on U.S. 60 about a mile east of Morehead, skidded and went into a ditch.

—Turn to Page 11

## Driver of Car In Fatal Accident Fined \$350

A Clearfield man whose car was involved in an accident May 29 which resulted in the death of two Morehead State College students, Wednesday was fined \$350 in City Court on a drunk driving charge.

The fine was levied against Ardith Ray Crose, 21, who previously had been sentenced to six months in jail by City Judge James E. Clay for failure to have an operator's license.

Crose has appealed the jail sentence to Circuit Court and his attorney told the court that Wednesday's conviction will also be appealed.

Crose has also been bound over to the November grand jury on a manslaughter charge in connection with the death of Earl Smith, 22, of Hazard, and Prentice May, Feb. 21, of Inez.

At the time of the accident, officers said Crose was fleeing from Morehead. Patrolmen Carl Johnson and Ed Hall.

They reported his car rounded Brady Curve at the west city limits, and went into the wrong lane, striking the small foreign car occupied by the two MSC students.

Both were dead on arrival at St. Claire Medical Center. Crose was injured slightly.

## Sister of Two Rowan County Men Claimed

Mrs. Margaret Linton Red, wife, died Friday in a Dayton, O. hospital following a long illness. She was 83.

A sister of S. J. Linton and B. C. Linton, both of Rowan County, she also survived by a son, Carl Robinson, Dayton, Linton, Ky. Mrs. Ida M. Carter and Mrs. Edith Boag, both of Columbus, O., and Mrs. Eleanor Goodwin, St. Petersburg, Fla.

Another brother and three sisters also survive. They are Charles Linton, Manassas Beach, Mich.; Mrs. Hattie Linton, Layton, Ky.; Mrs. Ida M. Carter, Lawrenceville, Ill., and Mrs. Mollie Redwine, Kingsville, Okla.

Funeral services and burial were held Monday in Portsmouth.

## Heart Attack Claims E. Cooley, 61

Elmer Cooley, a retired employee of Harbison-Walker Refractories, died suddenly Friday in a Morehead physician's office.

Death was believed to have come from a heart attack. A resident of the Little Perry section of Rowan County, Cooley had complained of a nagging chest pain earlier in the day and had driven to Morehead to consult a physician about the condition.

His wife, Mrs. Della Cooley, said he was stricken in the waiting room.

A native of Lewis County, Cooley was born Sept. 20, 1902. A son of the late Thomas and Anna Bond Cooley.

Survivors are the wife, Mrs. Rebecca Cooley, four sons, Clyde Cooley, Homer Cooley, Montclair, Ind., Earl Cooley, Hartford, Ind., and Anthony, at home.

Two sisters, Mrs. Cecelia Harbison Mansfield, O., and Mrs. Mattie Fernald, Dayton, O., and a brother, Ora Cooley, Olive Hill, also survive, along with a daughter, Mrs. Dobb DeHart, Davert.

Funeral services will be held in the East End Church of God, officiating will be the Rev. Jake Plank, Clifton Place and the Rev. Bill Reynolds.

Burial was in Garvin Basin Cemetery near Olive Hill under the direction of Leslie A. Henderson Funeral Home.

## On Cranston Road

Rent is based on family income instead of gross, occupied. The average is \$131.25 a month, including natural gas for heating and cooking, but the rent for occupants will go as low as \$22.

An open house for Rawcel Heights, announced for Sunday afternoon, has been postponed because of a change in the final inspection date.

All 30 units have been assigned and tenants will be notified, probably next week, when they can move in. Usual procedure is for five families to occupy their new homes each day, meaning initial occupancy will cover about one week.

## Farm Fete Fixed Friday

The annual Rowan County Farm and Home Field Day will be held tomorrow (Friday) on the M. Meadows farm which is operated by Mr. and Mrs. Elmer Kessick on the Cranston Road. Visitors on the farm will be invited to see a good pasture program, a good herd of commercial beef and a tobacco variety demonstration, including the use of a recently constructed set of waterways, a plant bed demonstration and demonstration of other things that will be of interest. County Agent Adrian Razor said.

## Nearly Twice National Rate

Rowan County's economy moved ahead on all fronts during the past year, according to a report on the nation's markets, released by the U.S. Commerce Dept. Significant gains were chalked up in its trading area as local residents, with more money to spend, increased their purchases in large-scale spending.

The findings are from a 640-page, copyrighted study entitled "Survey of Buying Power," issued by Sales Management. It presents data on income and spending for communities throughout the country, with the number of households. The average per household came to \$4,796, a gain over the prior year's \$4,561.

How was the money used? With less of the self-imposed restraint than had been exhibited during recent years, people reacted to the favorable economic conditions by gratifying their desire for some of the things they had not bought.

They went in for more expensive clothes, fancier cars, thicker rugs and better cuts of meat.

Some stores, attracted by the demand for better-quality merchandise, found it necessary to raise their prices.

Retail business in Rowan County, on a retail, was at a high level. Local stores accounted for gross sales in the year of \$10,578,000, exceeding the 1962 figure of \$10,090,000.

The rise, 6.5 percent, compares with 4.7 percent rise in the United States and a 6.4 percent rise in the State of Kentucky.

The survey gives, based on several factors, to show the relationship between the amount of money being spent in its retail stores and the estimated amount that might have been spent. It is called the "index of buying power."

The index for Rowan County is 1047, indicating that it could probably that percentage of the nation's retail business.

## Rowan Bond Sales Total \$55,000

The sales of Series E and B Savings Bonds in Rowan County for June totalled \$6,712 while sales for the year reached \$55,000 or 71.1% of the annual goal of \$73,500.

Kentucky's sales for June were \$4,038,106 while cumulative sales for the first six months totalled \$27,348,126 or 48.3% of the annual goal of \$56,600,000.

## Rowan Retail Trade Up 8.5 Percent

Rowan County's economy moved ahead on all fronts during the past year, according to a report on the nation's markets, released by the U.S. Commerce Dept. Significant gains were chalked up in its trading area as local residents, with more money to spend, increased their purchases in large-scale spending.

The findings are from a 640-page, copyrighted study entitled "Survey of Buying Power," issued by Sales Management. It presents data on income and spending for communities throughout the country, with the number of households. The average per household came to \$4,796, a gain over the prior year's \$4,561.

How was the money used? With less of the self-imposed restraint than had been exhibited during recent years, people reacted to the favorable economic conditions by gratifying their desire for some of the things they had not bought.

They went in for more expensive clothes, fancier cars, thicker rugs and better cuts of meat.

Some stores, attracted by the demand for better-quality merchandise, found it necessary to raise their prices.

Retail business in Rowan County, on a retail, was at a high level. Local stores accounted for gross sales in the year of \$10,578,000, exceeding the 1962 figure of \$10,090,000.

The rise, 6.5 percent, compares with 4.7 percent rise in the United States and a 6.4 percent rise in the State of Kentucky.

The survey gives, based on several factors, to show the relationship between the amount of money being spent in its retail stores and the estimated amount that might have been spent. It is called the "index of buying power."

The index for Rowan County is 1047, indicating that it could probably that percentage of the nation's retail business.

## Clearfield Pipers Hold Slim Lead In Softball Loop

The Clearfield Pipers retained their hold on first place in the Jaycee Softball League this week, by stopping Break 4-1.

The initial contest saw the last place Rowan County Hilltoppers smother Morehead, 6-3.

Clearfield has scored a total of 119 runs in 12 games, while holding the opposition to a cumulative total of 44.

Today (Thursday) Break will meet Clearfield at 5:30 p.m., while the Morehead Jaycees take on the Morehead Hilltoppers at 6:30 p.m.

Monday's card pits the Jaycees against Break at 5:30 p.m. and the Clearfield Pipers against the Mets at 6:30 p.m.

## Maj. Bradley Heads Top Missile Crew

Maj. Earl R. Bradley, son of Mr. and Mrs. William H. Bradley of Mabry Addition, Morehead, is commander of the Outstanding Missile Combat Crew of the Month at Little Rock AFB, Ark.

Maj. Bradley and other crew members were cited for their outstanding accomplishments during operational and training missions. His unit supports the Strategic Air Command's mission of keeping the nation's intercontinental missiles and jet bombers on constant alert.





LAST CALL FOR SAVINGS!!

# FINAL Summer Clearance!

## NOW — Layne's — 3 DAYS

Here comes Layne's BIG FINAL SUMMER SMASH—our 3-day FINAL SUMMER STOCK SALE at 1/2 PRICE. Storing merchandise takes up valuable space, and as A. B. used to say, "Space is valuable," so we figure it's wiser to sell than store. Come on down this Thursday, Friday or Saturday and grab these JUICY VALUES at 1/2 PRICE. Give us extra room needed for our Fall Merchandise that is arriving daily and we'll give you EXTRA SAVINGS for your SUMMER NEEDS.

### BE SMART, MEN! 1/2 PRICE SAVE NOW!

#### ENTIRE SUMMER STOCK

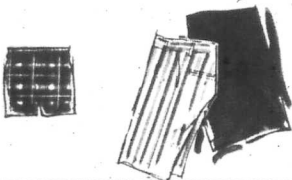
Suits — Sport Coats — Slacks — Walking Shorts  
Banlon Shirts — Sport Shirts — Swim Wear — Robes — Pajamas  
All Manhattan Shorts and T-Shirts  
All All-Weather Coats

ALL NAME BRANDS

Curlee — McGregor — Manhattan  
Brain McNeil — Rugby — Mary Haas  
Wings — H-I-S — Darby House

### 50 % OFF

OUR REGULAR PRICE



### LOOK, LADIES! — SAVE 1/2

#### FROM THIS SEASON'S PRICES ENTIRE SUMMER STOCK

Dresses — Coats — Suits — Slacks — Skirts  
Bermudas — Swim Wear — Purses  
ALL NAME BRANDS

Bobbie Brooks — Catalina — Rose Crest — Betty Rose  
Betty Hartford — Carol King — Stacy Ames — Jollie Juniors

### 50 % OFF

Our Ladies' Store Really Gets Clobbered With These Prices Slashed In Half.



### — MENS' NUNN BUSH SHOES — 1/2 PRICE

Entire stock of Nunn Bush and Edgerton shoes go during this 3-DAY SALE. Over \$5,000.00 worth of shoes.

### OUR CHILDREN'S STORE HAS GONE 1/2 PRICE, TOO!

#### All Girls' Summer

Dresses Sports Wear Swim Wear

### 50 % OFF

REGULAR PRICE

### BOYS'

Suits- Sport Coats Bermudas  
Swim Wear

### 50 % OFF

THIS SEASON'S PRICE

ALL INFANTS' WEAR REDUCED — BUT NOT 1/2 PRICE



### ★ ★ ★ 3 BIG DAYS ONLY ★ ★ ★

Thursday Friday Saturday

### ★ ★ ★ 3 STORES ONLY ★ ★ ★

Men's Store - Ladies' Store - Children's Store

This is an absolute CLOSEOUT on all summer clothing at these three stores. Nothing will be carried over till next year! Every item of summer clothing will be sold during this sale or given to charity before 1965.

# Layne's

## MOREHEAD, KENTUCKY



# Salient Points On Cave Run Project Receive Answer

Friday was a humid, sultry night probably cutting against the wind, and the length of the Cave Run Reservoir open forum at RCHS gymnasium.

At that several hundred persons were present as opponents of the \$23 million project, mostly farmers in thelicking basin, continued to voice displeasure.

Surprisingly, no one asked about the relocation of cemeteries. The U. S. Corps of Engineers has a flexible plan for cemeteries, and this has proved to be no great problem at other reservoir sites.

It was evident that the prices to be paid, and the method of acquisition, for real estate, was paramount in thinking of the farmers who were present.

These land hearings will start in September or October, and first work (with employment of area people) on the dam, three miles north of Farmers, will get underway next March.

**EASY VICTORY**—The Rowan County court had no choice except to rule for Curt Dillon in his petition against the City of Morehead tax assessment of five small tracts in recently annexed Tolliver and Redburn Additions. All the evidence was on his side, even though the property will undoubtedly increase in value with city utilities and services. Rendering the verdict, Judge Flannery said: "Nobody really knows how much property in and around Morehead is worth. But, I do know it is all too high." He is thinking in terms of a student recreation center, and also one for faculty and personnel.

If you have any doubts that prices have skyrocketed for real estate both above and below the dam site, then try to buy some.

**WILD WEST**—As everybody in these parts knows Bob Bishop is a somewhat confirmed story about the GOP presidential nominees—asked what would take in case Khrushchev attacked, Barry Goldwater replied: "I would circle the wagons."

**COMMERCIALS**—Circling the wagons brings to mind the western movies are getting even

more popular on TV than percentage-wise, this is the best in the major leagues.

**BIGGER BITE**—Nobody reads better than a newspaperman that people are tax conscious, and tax rebellious. But we haven't thought about the enormity of the federal income tax until running across this in Readers Digest: "Since the 19th Amendment was passed in 1913, some changes have been made. Today a worker netting the minimum wage of \$50 a week over his exemptions is paying more dollars in income tax than a person who made \$30,000 a year did just after the work week was passed." ... perhaps the old names of every one who paid a federal income tax were posted in the courtroom then at Morehead, you could count them on one hand, leaving out the thumb. ... also the present income tax was elevated to the rank of a U. S. tax under the guise of a Victory

**CHEAP TWO WAYS**—Traveling to Lexington 124 week was planned for the Morehead C&O ticket agent that a one-way fare is \$2.05, but you can purchase a round trip for \$2.75, or only 70 cents more. The round trip will be good for 30 days, and we learned that 70 people buy newsway coach tickets.

**STAFF INCREASE**—The Medical Center is adding an assistant surgeon of the present income tax was elevated to the rank of a U. S. tax under the guise of a Victory

**ENDORSED**—Writing about the near-drought, recalls that the "water" has been in the local news this year more than any other. There's the controversy over the city owned water system; Cave Run Reservoir; and widening and straightening Triplet Creek to prevent future major floods at Morehead. Add one more this week: the Chamber of Commerce has petitioned the Department of Conservation for a review of the Triplet (both branches) watershed with hopes that small dams can be erected on the small tributaries. It would require tributes to impart all the information, cost, and potentiality, but you'll be reading more about it before the year is out.

**TOPS** — Morehead's Steve Hamilton had a "good" and a "bad" day during the week. He suffered his first defeat, when he came back in a relief role to have a victory for the Yankees. Steve's record stands at seven victories and one defeat—seven.

**REPAIRED**—A large portion of the City Boulevard that was torn up for storm sewer repair has been replaced. The city circles the MSC campus (since maintained) needs resurfacing.

**VACATION**—Answering a question—the next vacation of Rowan Circuit Court will be in November. There is a considerable lull between the August and November terms, but it doesn't matter much as the criminal docket is light about one-fourth as heavy as 30 years ago.

**COMING** — More, and more, Rowan County businesses are being placed under the broad scale of a 12.5% tax. This is a somewhat confusing statute, with departmental interpretations containing many exemptions and also inclusion of businesses that heretofore thought themselves exempt. Investigations have made our area target in recent weeks.

**CONCILIATING**—The weather forecaster gives no promise for the thing, our people need most right now is an all night and all day rain—a real soaker.

## "I REMEMBER" BY The Old Timer

From Mrs. Gertrude Shaw, Pendleton, Oregon: I remember when I was a small child we moved to Eastern Oregon and settled on a dry land farm. My father put in a wheat crop which was almost a failure. After completing the wheat harvest, he went about 20 miles away to haul wheat. He didn't return for some time and our groceries were nearly gone. No mother boiled wheat for us. Not knowing that we had nothing else, we children thought it was delicious.

We had no way to get to town and mother was all alone with five small children. I don't think how difficult things are now.

Today, children have every toy conceivable—ice cream cones, hot dogs, hamburgers, until there are no treats.

When we were small, these things were very many, except and I had rag dolls—dolls made of weeds and sticks. The boys had stick "horses." Our swings were a board fastened to ropes and hung from beams on the porch or a tree limb.

Everything was a "treat" for us—an apple or an orange cut into pieces so we could each have a taste. We never heard of ice cream—yet I still think of the with longing.

And then Steve Overheard at a beach resort. She: "What are you starting at?" He: "Nearly all of you."

# Cucumbers—300 Acres—Growing Successfully In Four Nearby Counties

Some 300 acres of cucumbers now being marketed in the four-county area of Lee, Wolfe, Boone and Owsley, and farm families in that section are getting a good idea of what successful cucumber growing in the way of supplementing farm income.

Growing cucumbers for the market is a new thing for many eastern Kentucky farmers, although cucumbers have been produced commercially in several south-central Kentucky counties for some years. The acreage in eastern Kentucky this year is a sort of pilot project, with a group of farm families in the four counties contracted to grow cucumbers for Paramount Foods of Louisville. This company agreed to set up grading and receiving stations at central locations and pay growers set prices for different grades or sizes of cucumbers.

Harvesting of the cucumbers started about July 1 and will continue about two more weeks. At this point, the growing season will be settled with the arrangement and generally well pleased with the amount of money received. In fact, some growers say they are a good job growing cucumbers have expressed surprise at how their small farms and patches are turning-out to be.

Doing a good job of cucumbers patch management is the key to success, according to Hubert Davis, University of Kentucky Extension horticultural specialist. Growing cucumbers commercially requires a procedure somewhat different from producing them for home use. To insure good results, commercial cucumbers should be harvested every other day and quality. He also noted that, while the growers are averaging in income from each acre is between \$300 and \$400, some can receive as much as \$1,000 per acre from cucumbers.

We hope that this supplemental income from cucumbers in producing areas of the state will encourage additional production next year," Davis concludes.

**TERMITES?**  
call Termitox!  
"World's largest termite control organization!"  
**\$5000-GUARANTEE**  
Against Future Termite Damage  
For Further Information Call  
**CARR LUMBER CO.**  
Phone 784-5433  
All Work Done by Termitox Co.  
Lexington, Ky.

**THE STYLETTE BEAUTY SHOPPE**  
**NOW OPEN**  
School Specials:  
Permanents \$8.50 — \$10.00 — \$12.50  
From August 1 to August 31  
Location — Clearfield Hill  
**Florence Mitchell**  
OWNER and MANAGER  
Phone 784-4900

**TRAIL**  
★ Air Conditioned ★  
Tonight  
Friday & Saturday

Another "Great" From Disney!  
"I am Thomanas—a most unusual cat... they say I'm enchanted, and I AM!"

**Walt Disney**  
THE THREE LIVES OF  
**Thomasina**  
PATRICIA MCGOOGHAN SUSAN HAMPSHIRE  
and... PAREN DORIC MATTHEW GARDNER  
and... ELSBETH MARCH in the role of "Thomanas"  
Directed by ROBERT ALTON  
Produced by WALT DISNEY  
Technicolor  
PLUS  
Dear Martin and Jerry Lewis  
— In —  
"At War With The Army"

**Starting Sunday**  
A Broadway Success — Now On the Screen!  
One defied life and longed for love... The other defied love and fled from life!

**DEBORAH KERR**  
**HAYLEY MILLS**  
**JOHN MILLS**  
**ROSS HUNTER'S**  
**"The CHALK GARDEN"**  
TECHNICOLOR  
A QUOTA RENTALS LTD. PICTURE  
A UNIVERSAL RELEASE  
Starts Wednesday, Aug. 5th

His First Full-Length Film  
**"Hey There, it's Yogi Bear"**  
Yogi Bear Color  
Distributable Action-Programs a 1956 MCA-TV production

# ONE OF THE BIGGEST REASONS WOMEN NEED AN EXTENSION PHONE IN THE KITCHEN

Why not simmer-down and save minutes from going to pot by putting a handy wallphone just a reach away from where you work. A wallphone in the color

of your choice fits almost anywhere and doesn't take up work space. Phone or visit our Business Office and learn how little it costs to have one.

**GENERAL TELEPHONE**  
America's Largest Independent Telephone System

**TIME OUT**  
**"I REMEMBER"**  
TAIN'T SO HOT!  
I REMEMBER BACK IN THE 20'S ONE SUMMER IT WAS SO HOT THE LEAVES WILTED AND YOU COULD FIND YOURSELF A WILD GRAPE VINE AND PICK ALL THE RAISINS YOU WANTED.  
AN I REMEMBER THE GREEK DRIED UP ONE SUMMER. I REMEMBER THE WELLS IN THE COUNTY.  
IT'S SO HOT YOU COULD FIND A WILD GRAPE VINE AND PICK ALL THE RAISINS YOU WANTED.



# Session To Eye Religion In Schools

A conference that will review the issue of religion and the schools has been called by Dr. Harry M. Sparks, State Superintendent of Public Instruction.

"I have called this conference in recognition of the urgency and magnitude of the problem of religion and the schools," Dr. Sparks said.

"By holding this conference we hope to clarify for school board members and school superintendents some of the issues of religion and the schools and to provide useful information that will help these administrators make decisions for their schools in the area of education and religion."

The two-day affair will be held at the Kentucky Hotel in Louisville Aug. 13 and 14. It will be attended by local school superintendents, school board members, and officials of sponsoring agencies.

Dr. Wilbur G. Katz, professor of law at the University of Wisconsin, will address the opening address. His subjects will be constitutional issues concerning religion and education.

Paul Oberst, professor of law at the University of Kentucky, will discuss the Kentucky legal situation as it relates to religion and the schools.

Samuel A. Alexander, superintendent of public instruction, will tell what Kentucky schools are doing to meet problems of religion and the schools.

Dr. J. J. Oppenheimer of the University of Louisville will address the group on teaching of moral and spiritual values in the schools.

Dr. Sparks, who recently returned from a tour of German schools, will give a comparative view on religious practices in Germany and America.

Dr. Harry Stearns, a member of the Board of Mission of the Presbyterian Church, will present case studies of shared time and released time programs to counties late this year.

Classification of Bookmobiles

On the fiscal side, Miss Williams credits Bookmobile "service" for an upswing in local support of public library services. In 1962, local support averaged 34 cents per capita, compared with 74 cents in 1963-64.

After Pike County began operating a Bookmobile several years back, residents of the Hurricane Creek area had a long drive to the library. The area lost the Bookmobile because of lack of operating funds. But this month, Miss Williams reports, the fiscal court has voted to support the program again. Pike County, she said, will be first in line for one of the new vehicles to be delivered later this year.

Practical how-to-do books are in great demand on the rolling libraries and Bookmobiles driven can relate many success stories. The young wife requested material on auto machines. Her husband put the material to good use and was soon promoted to better-paying job.

Other Bookmobile patrons simply read for enjoyment. One Wayne County youngster wrote, "We live on a farm and there are eight of us in the family at home. We check out books off the Bookmobile every time it comes through here. It sure makes a good pastime."

These funds would be the first federal money injected into the Bookmobile program, she pointed out. Except for the original fleet of 64 vehicles, Bookmobiles and their book collections have been provided by the department using State funds. Local communities and counties assume the cost of upkeep on the vehicles, provide the Bookmobile driver and cover other incidental expenses.

This involvement down to the community level, she added, has proved to be the great strength of the program, despite advice 10 years ago that the State should maintain direct supervision over the Book-

# Bookmobiles Have Defied Critics And Appear Here To Stay - Librarian Says

Like the business centers, he said that the Bookmobiles aren't here to stay. The critics predicted that the first flat tire in some remote country road would lay the vehicle waste and vans down to the rust and rot.

That was 10 years ago when 34 new Bookmobiles provided by Kentucky business and individuals began making their rounds. The vehicles were turned over to the old Library Extension Division for general supervision but were operated locally by counties or communities.

Reviewing the progress of these rolling libraries in that decade, State Librarian Margaret Wise admits that the venture has held its ups and

downs, at the same time writing a new chapter in Kentucky's efforts to educate the youth and older citizens.

Today, Bookmobiles are the company of motherhood and the flag, symbolic of their entrenched, unassailable place in Kentucky. Miss Williams notes that Kentucky's Bookmobile fleet now numbers 103 vehicles, operating on regular schedules in 100 counties. About half of the original 60-volume Bookmobiles donated by the Citizens Committee in 1964 are still on the road. Some have been replaced by 55 of the new 2,000-volume vehicles purchased by the State Library Department. Another 35 replacements will be delivered

to counties late this year.

Classification of Bookmobiles

On the fiscal side, Miss Williams credits Bookmobile "service" for an upswing in local support of public library services. In 1962, local support averaged 34 cents per capita, compared with 74 cents in 1963-64.

After Pike County began operating a Bookmobile several years back, residents of the Hurricane Creek area had a long drive to the library. The area lost the Bookmobile because of lack of operating funds. But this month, Miss Williams reports, the fiscal court has voted to support the program again. Pike County, she said, will be first in line for one of the new vehicles to be delivered later this year.

Practical how-to-do books are in great demand on the rolling libraries and Bookmobiles driven can relate many success stories. The young wife requested material on auto machines. Her husband put the material to good use and was soon promoted to better-paying job.

Other Bookmobile patrons simply read for enjoyment. One Wayne County youngster wrote, "We live on a farm and there are eight of us in the family at home. We check out books off the Bookmobile every time it comes through here. It sure makes a good pastime."

**THIS SUMMER HIT THE ROAD SAFELY**

In A Good Car From Curt's Auto Fair And Bargain Barn

May we thank you all for the terrific business that we have enjoyed these last 30 days. We still have about 30 good cars left—everything from a Cadillac to a Corvair.

Our sale is still going on, with prices as hot as a Cowboy's Pistol. Come up and look around. Then, we dare you to make us an offer. See and talk with your old Bargain Barn Buddy, Curt Hutchinson, at

**CURT'S AUTO FAIR AND BARGAIN BARN**

AND

**BARGAIN BARN**


U.S. 60 EAST — MOREHEAD, KY.

**ABSOLUTE AUCTION**

To Settle Estate of Late JOHNNY BEAIR

**SATURDAY, AUG. 1, 1964**

**AT 5:00 P.M.**



7 room home dwelling with bath—on good corner lot—one block west of Health Center—Close to Rowan County High and Grade School. Also selling 1952 Oldsmobile car.

**THOMAS ADDITION**

Morehead, Kentucky

Terms: 10% Day of Sale, Balance With Deed on Real Property — Cash for Automobile.

**C. Roger Lewis**  
Auctioneer - Realtor


**Alpha Hutchinson**  
Realtor

PHONE 794-5333 — MOREHEAD, KY. — PHONE 794-4746

**BOOKMOBILE SERVICE**

**Bookmobile Goes to Prison**

REACHING OUT to extend Bookmobile service to the Kentucky Correctional Institution for Women, Mrs. Lornie Watson (left), institution superintendent, and material from the Shelby County Bookmobile to some of the prisoners. Forty books will be delivered each month to augment the institution's 700-volume library. During the school year, the institution's teachers will select material to fit the school curriculum. Trips to the institution at Penney Valley formerly called the Kentucky Women's Prison, are financed by private donations. The new service adds about 10 miles to the route for Mrs. Lawson of Waddy who has piloted the Shelby County Bookmobile for eight years.



CARROLL IN AFRICA... American actress Carroll Baker. Right on the "Mister Moses" set in Kenya, discusses cosmetic problems with Gladys Ngyu, one of the few professional beauticians in Africa.

**CONVENTION OF VALUES**

AT PIERCE'S

<p><b>Head &amp; Shoulders</b></p> <p>SHAMPOO UNBREAKABLE</p> <p>PRICE CUT TO</p> <p style="font-size: 2em;"><b>54¢</b></p>	<p><b>CORN SKEWERS</b></p> <p>TERRIFIC VALUE</p> <p style="font-size: 2em;"><b>22¢</b></p>	<p><b>150 COUNT—WHITING</b></p> <p><b>PAPER PLATES</b></p> <p>THIS IS VALUE!</p> <p>REG. \$1.49</p> <p style="font-size: 2em;"><b>99¢</b></p>	<p><b>HERSHEY'S CHOCOLATE SYRUP</b></p> <p>FULL 1-1/2 GALS.</p> <p>OUR PRICE</p> <p style="font-size: 2em;"><b>18¢</b></p> <p>LIMIT 3-GALS.</p>
<p><b>GLEEM TOOTHPASTE</b></p> <p>REG. \$1.50</p> <p style="font-size: 2em;"><b>38¢</b></p>	<p><b>CANNON RATH TOWELS</b></p> <p>SAME 2-1/4" SIZE SORTED COLORS</p> <p>REG. 9¢</p> <p style="font-size: 2em;"><b>66¢</b></p>	<p><b>CANNON "Carose" BLANKET</b></p> <p>FULL 7-10" SIZE ASSY. SOLID COLORS</p> <p>REG. \$2.99</p> <p style="font-size: 2em;"><b>\$2.44</b></p>	<p><b>ASSORTED FLAVORS FLA-VOR-AID YOUR CHOICE</b></p> <p style="font-size: 2em;"><b>2¢</b></p> <p>FANTASTIC!</p>
<p><b>NOXZEMA</b></p> <p>COVER GIRL LIQUID MAKE-UP</p> <p>REG. \$1.50</p> <p style="font-size: 2em;"><b>99¢</b></p>	<p><b>FOLEY FOOD MILK</b></p> <p>WASHES AND STRAINS FRUITS AND VEGETABLES FOR CANNING AND FREEZING</p> <p>REG. \$2.98</p> <p style="font-size: 2em;"><b>\$1.99</b></p>	<p><b>MIRRO ALUMINUM FOIL</b></p> <p>2-25 FT. ROLLS</p> <p>WITH FREE Shortening or Ice cream scoop!</p> <p>2-25-Ft. ROLLS FOIL AND SCOOP ONLY</p> <p style="font-size: 2em;"><b>54¢</b></p>	<p><b>MIRRO ICE CUBE TRAY</b></p> <p>Aluminum With Plastic Insert</p> <p>SEE AND SAVE</p> <p style="font-size: 2em;"><b>47¢</b></p>
<p><b>Gillette RIGHT GUARD</b></p> <p>POWER BRAT</p> <p>REG. 79¢</p> <p style="font-size: 2em;"><b>54¢</b></p>	<p><b>100 COUNT BUFFERIN</b></p> <p>REGULAR \$1.29 VALUE</p> <p>TERRIFIC PRICE!</p> <p style="font-size: 2em;"><b>94¢</b></p>	<p><b>ROUND OR SQUARE CAST IRON SKILLET</b></p> <p>Round 10 1/2 x 2" Square 10 1/2 x 11 1/2"</p> <p>30% More Frying Space • Real Aged</p> <p style="font-size: 2em;"><b>\$1.44</b></p>	<p><b>QUART SIZE AERO-WAX</b></p> <p>NON-YELLOWING EASY TO APPLY</p> <p style="font-size: 2em;"><b>73¢</b></p>
<p><b>KODAK BLACK AND WHITE FILM</b></p> <p>REG. 60¢ ROLL</p> <p>GIGANTIC SAVINGS!</p> <p style="font-size: 2em;"><b>47¢</b></p>	<p><b>Dr. SCHOLL'S INSOLES</b></p> <p>COOL AND COMFORTABLE</p> <p>MEN'S OR LADIES' SIZES</p> <p>SPECIAL PURCHASE</p> <p style="font-size: 2em;"><b>22¢</b></p>	<p style="text-align: center;"><b>FIESTA WEAVE BATH MAT</b></p> <p>RUBBER-NON SKID</p> <p>ASSORTED COLORS</p> <p>REG. \$1.69 VALUE</p> <p>BUY and SAVE</p> <p style="font-size: 2em;"><b>88¢</b></p>	
<p><b>FULL SIZE COTTON CHENILLE BEDSPREADS</b></p> <p>MODERN DESIGNS</p> <p>DECORATIVE COLORS</p> <p>WHILE THEY LAST</p> <p>Reg. \$3.98</p> <p style="font-size: 2em;"><b>\$2.77</b></p>	<p><b>JUMBO SIZE QUILT TOP GARMENT BAG</b></p> <p>Hold 16 garments</p> <p>Metal reinforced</p> <p>Full Quilted Front</p> <p>THIS IS VALUE!</p> <p>REG. 98¢</p> <p style="font-size: 2em;"><b>78¢</b></p>	<p style="text-align: center;"><b>FITTED MATTRESS COVER</b></p> <p>PLASTIC-STAIN PROOF</p> <p>REG. \$1.29</p> <p>BONUS BUY</p> <p style="font-size: 2em;"><b>78¢</b></p>	
<p><b>ASST. COLOR WASHCLOTHS</b></p> <p>12-1/2" SIZE</p> <p>REG. \$1.00</p> <p style="font-size: 2em;"><b>12 77¢</b></p>	<p><b>PLASTIC PILLOW COVERS</b></p> <p>SIZE 21" x 27"</p> <p>STAIN PROOF</p> <p>Reg. 59¢</p> <p>SAVE</p> <p style="font-size: 2em;"><b>44¢</b></p>	<p style="text-align: center;"><b>10-QT. GALVANIZED PAIL</b></p> <p>Reg. 89¢ VALUE</p> <p>SENSATIONAL!</p> <p style="font-size: 2em;"><b>54¢</b></p>	
<p><b>EKCO CAN OPENER</b></p> <p>ROCK BOTTOM PRICE</p> <p style="font-size: 2em;"><b>22¢</b></p>	<p><b>EKCO PARING KNIFE</b></p> <p>3" BLADE-SOLID HANDLE</p> <p>STAYS SHARP LONGER</p> <p>Reg. 35¢</p> <p>PRICE SLASHED TO</p> <p style="font-size: 2em;"><b>23¢</b></p>	<p style="text-align: center;"><b>2-CUP ONION and FOOD CHOPPER</b></p> <p>UNBREAKABLE POLYETHYLENE</p> <p>REG. 98¢</p> <p>MAMMOTH SAVINGS ONLY</p> <p style="font-size: 2em;"><b>64¢</b></p>	
<p><b>BIG 11 1/2-QT. ENAMEL POT</b></p> <p>WITH COVER</p> <p>REGULAR \$2.99 VALUE</p> <p>SUPER SPECIAL</p> <p style="font-size: 2em;"><b>\$1.99</b></p>	<p><b>BAG OF 50 SPRING CLOTHES PINS</b></p> <p>FULL SIZE-AMERICAN</p> <p>REG. 69¢ TREMENDOUS</p> <p style="font-size: 2em;"><b>44¢</b></p>	<p style="text-align: center;"><b>50 FT. HANK PLASTIC CLOTHES LINE</b></p> <p>REG. 49¢</p> <p>WAY OFF PRICE!</p> <p style="font-size: 2em;"><b>37¢</b></p>	
<p><b>EKCO 5-INCH ALL PURPOSE STRAINER</b></p> <p>REG. 49¢</p> <p>SPECIAL BUY</p> <p style="font-size: 2em;"><b>34¢</b></p>	<p><b>WAFFLE WEAVE DISH CLOTHS</b></p> <p>BLEACHED-ASST. COLORS</p> <p>14 x 14" SIZE</p> <p>PKG. OF 6</p> <p style="font-size: 2em;"><b>77¢</b></p>	<p style="text-align: center;"><b>PLASTIC BOWL BRUSH</b></p> <p>PLASTIC BRISTLES AND HANDLE</p> <p>REG. 29¢</p> <p>TERRIFIC VALUE</p> <p style="font-size: 2em;"><b>21¢</b></p>	
<p><b>PLASTIC BREAD FRESHNER</b></p> <p>SINGLE LOAF SIZE—CLEAR PLASTIC</p> <p>Reg. 9¢</p> <p>BONUS BUY</p> <p style="font-size: 2em;"><b>54¢</b></p>	<p><b>POLY FLY SWATTER</b></p> <p>WASHABLE-ASST. COLORS</p> <p>REG. 10¢</p> <p>OUR PRICE</p> <p style="font-size: 2em;"><b>6¢</b></p>	<p style="text-align: center;"><b>28 INCH TWIRLING BATON</b></p> <p>CHROME TYPE FINISH</p> <p>TREMENDOUS SAVINGS!</p> <p>REG. 59¢</p> <p style="font-size: 2em;"><b>44¢</b></p>	

PIERCE'S 5¢ & 10¢ STORE

SOCIETY

LUNCHEON GIVEN FOR MRS. NOLLAN... Mrs. Naomi Claypool entertained Saturday with a luncheon at Mayfield...

MR. AND MRS. MARKWELL WELCOME FIRST CHILD... Mr. and Mrs. Bert R. Markwell of Shelby, O. are welcoming their first child...

CALIFORNIA VISIT AT ORCIERE HOME... Mr. and Mrs. Kenneth Orchiere and daughter, Kathy, returned from California...

Several from Morehead were guests of a luncheon and brief party given Friday by Mrs. James A. Davis...

MR. AND MRS. BLACK... Mr. and Mrs. John C. Black of Blair Street, are the parents of a son, Gregory Samuel...

MR. AND MRS. ALBERT TODD... Mr. and Mrs. Albert Todd and son, David Wayne, returned Saturday from a ten-day visit to New York City...

Miss Helen Jane Drake of Miami, Fla. is a guest this week of Mr. and Mrs. Hubert Allen...

First son is born to Mr. and Mrs. Caull... A son, their first child, was born July 24 to Mr. and Mrs. Charles D. Caull...

Reaches 90... Dr. A. J. Williams of Upper Licking River will observe 90 years Sunday, Aug. 2...

Veterans Meeting Will Be Saturday... The regular meeting of the Morehead Post 3079, Veterans of World War I, will be Saturday at 2 p.m. at Rowan County High School...

Blains Chilled... Mrs. and Mrs. William Danie Blains have chosen the name Everett Dove for their son, born July 21 at St. Clair...

Mr. and Mrs. Roger Caull and daughter, Doris Ann, of Wichita, Kan., spent last week visiting with their parents, Mr. and Mrs. Oscar Caull of Morehead...

Mr. and Mrs. Frank M. Butler of Gosport, O. visited last week at the summer home of Albie H. Parker and his brother, John M. Butler...

Rowan Woman's Club Board Meeting Held... The Rowan County Woman's Club annual executive board meeting was held Tuesday evening at Rowan Park...

Officers present to help plan the club's work for the coming year were: Mrs. Warren Lester, secretary...

Mr. and Mrs. E. W. McKinney left Sunday for a week's visit in the summer home of Mrs. Elliott Brammell...

Mr. and Mrs. Otto Carr spent Saturday and Sunday in West Liberty, where they were guests of Mr. and Mrs. C. K. Stacy...

Mr. and Mrs. Charles Bishop were weekend visitors in Cincinnati...

Staying visitors at the home of Mrs. Stella Bristow... Sunday visitors at the home of Mrs. Stella Bristow (wife of the late Frank Bristow)...

Funeral Tuesday for Mrs. Florence Dine... Mrs. Florence Dine, wife of Mr. H. Dine, died Sunday...

Funeral Tuesday for Mrs. Elsie Cline... Mrs. Elsie Cline, wife of Mr. Cline, died Sunday...

Mr. and Mrs. Talmadge Cline and son, George, of Sandy, Ohio, returned from a visit with their mother, Mrs. Elsie Cline...

Mr. and Mrs. W. E. Bayless had as their guests Thursday and Friday at their home the family, Mr. and Mrs. Ed Seeger and children, Nipa and Kyra, of Louisville...

Mr. and Mrs. George D. Jackson and family of Housh, Tex. left Monday afternoon for a visit with his father, Stone Jackson and his sister, Mrs. Nelson Caull...

Mr. and Mrs. Orville Howard had as their guests for the weekend Mr. and Mrs. Lowell Howard and sons, Gregory and Lowell of Louisville...

Mr. and Mrs. Tom Powers, Tex. left Monday afternoon for a visit with his father, Stone Jackson and his sister, Mrs. Nelson Caull...

Mr. and Mrs. E. D. Patton and Mrs. Helen Patton of Louisville, Ky. are expected to spend the weekend in West Liberty...

Mr. and Mrs. E. D. Patton and Mrs. Helen Patton of Louisville, Ky. are expected to spend the weekend in West Liberty...

Another thing to the credit of air conditioning is that people who attend church services in summer aren't bothered with underakers, advertisements on hand fans...

Hard Work Key To MTD Operations

State Motor Transportation Commissioner Ben M. Combs has a simple explanation for the fact that his inspectors checked three times as many trucks for safety last year as the year before.

The box score for big-truck inspections shows that the department field force numbering 40 inspectors at the close of the fiscal year—virtually the same number as last year—inspected 11,934 trucks.

The inspectors have become progressively better and faster in their inspections and the new work stations make our work a easier, says Commissioner Combs.

The statistics also show a 70 percent increase in citations for excessive weight in citations on Interstate 65 near Shelbyville and Interstate 65 near Paducah...

New licensing procedures that require a truck's registered gross weight to be imprinted on a metal tag to facilitate weight checks, Combs said.

Carter Caves Golf Course Open Soon

Golfers will be swarming the little white pellets in three more weeks as the new 18-hole Carter Caves Golf Course is opened...

With these latest additions, the state parks are living legends and the new parks are living legends...

When they're spared another thing to the credit of air conditioning is that people who attend church services in summer aren't bothered with underakers, advertisements on hand fans...

Predom Light On Crops Of Everything But 'Kids'

Already as pore farmers can sign up on their corn and wheat and other products and our out in the Federal Reserve Soil Bank which has local...

Morehead has been given a "Friend of Industry Service Award" by the Kentucky L-P Gas Association...

Two young boys from Morehead are being raised by the government as a result of their parents' deaths...

Mr. and Mrs. John R. Dunagan returned Monday from a vacation in Canada...

Mr. and Mrs. William T. Moore and son, Douglas, of Lakewood, Calif. arrived Thursday for a ten-day visit with their father, Mr. J. M. Moore...

Mr. and Mrs. George D. Jackson and family of Housh, Tex. left Monday afternoon for a visit with his father, Stone Jackson and his sister, Mrs. Nelson Caull...

Mr. and Mrs. Orville Howard had as their guests for the weekend Mr. and Mrs. Lowell Howard and sons, Gregory and Lowell of Louisville...

Mr. and Mrs. Tom Powers, Tex. left Monday afternoon for a visit with his father, Stone Jackson and his sister, Mrs. Nelson Caull...

Mr. and Mrs. E. D. Patton and Mrs. Helen Patton of Louisville, Ky. are expected to spend the weekend in West Liberty...

MOBILE HOMES PARK Trailer Sales Rental - Parking Morehead Camp Motel



# Premium List And Program - 1964 Rowan County Fair

## General Rules

The Rowan County Fair will be held Thursday, Friday and Saturday, August 7, 8 and 9, 1964.

All events will be held at the Morehead Tobacco Warehouse on U. S. 61 East of Morehead, Kentucky. (The New Tobacco Warehouse.)

The time of entering all exhibits and of removing all exhibits is listed at the beginning of each division.

All exhibits not removed by 2:00 P.M. Saturday, August 8, will become the property of the Rowan County Fair Board.

All entries in any division or ring that have previously won a Blue Ribbon will be disqualified.

The Danish System of Judging will be used by the FFA, the FFA, the 4-H, Premium money will be distributed according to the number of entry ratings in each department. Excellent will win a Blue Ribbon, Good Red Ribbon and Fair, White Ribbon.

The Rowan County Fair Board will interpret all rules and will have final decision over any dispute that may arise.

Exhibitors are responsible for removing all exhibits.

Only project work done since the last Fair in 1962 may be shown in the 4-H Exhibits, the FFA Exhibits, and the Vocational Home Economics and FFA Exhibits. Work of the preceding years may be shown but will not be eligible for prizes.

## Program of Events

- Thursday—  
7:30 P.M.—Talent Show Elimination
- Friday—  
10:00 A.M.—Beef Show  
10:00 P.M.—Tractor Driving Contest  
2:15 P.M.—Greased Pig Contest  
7:30 P.M.—Special Entertainment
- Saturday—  
10:00 A.M.—Pet Judging Contest  
Swine Show  
11:00 A.M.—Dairy Show  
7:30 P.M.—Talent Championship

The members of Rowan County and Morehead Chapters of the Future Homemakers of America will be in charge of a Baby Sitting Room, where young children can be entertained during the Fair. A movie program of cartoons will be sponsored by the two chapters for a small admission.

## Pet Show

Robert Bishop in charge

Judging at 10:00 A.M. Saturday, August 8. Pets must be entered at 10:00 A.M. Saturday, August 8 and removed immediately after judging.

Ring 1—Cats	\$6.00
1st	\$3.00
2nd	2.00
3rd	1.00

Ring 2—Dogs	\$6.00
1st	\$3.00
2nd	2.00
3rd	1.00

Ring 3—Ponies	\$6.00
1st	\$3.00
2nd	2.00
3rd	1.00

## Greased Pig Contest

Burt Moore in charge

7:15 P.M. Friday, August 7.  
Boys 14 years and under are eligible to enter the contest. The Fair Board will furnish the pig. The caterer wins the pig.

## 4-H CLUB DIVISION

Department Heads  
Adrian Bantz and Ronald Bishop

Only 4-H Club members of the past two years (since the last fair in 1962) are eligible to enter for prizes.

- A Club member may enter in the project or projects he or she is engaged in or is engaged to since the last Fair in 1962.
- No entry will be eligible for prizes unless a record has been completed and turned in.
- All entries must be in on time to be entered.
- All exhibits except livestock must be in between 12:00 Noon and 5:00 P.M. Wednesday, August 5, and must be removed between 12:00 Noon and 2:00 P.M. Saturday, August 8.
- Points will be given for all four Divisions. Points will be given on Blue, Red and White Ribbons. Total points of all entries will be divided into the total money allowed for prizes. The prize money will be pro-rated out to the club members according to the number of points accumulated.
- There is \$20.00 in prize money to be pro-rated for this department.

Judges: Pat Fack and Mary Jo Dixon

## Rules

- Only one entry per ring by a club member.
- Use only standard canning jars. For jellies use pints or jelly jars.
- Use quart jars in all-rings except those rings marked pint jars (standards).
- Exhibit only in Unit where work was done.
- Remove all rings from the tops of jars except jams, jellies, preserves and pickles.
- Use regulation green and white gummed labels. Place label 1/4" from the bottom. (Obtain from Extension Office.)

## CLASS 1—CANNING

- Ring 1B—Unit I—Canning member only  
1 qt. fruit (small)  
1 qt. fruit (large)
- Ring 2B—Unit II—Canning member only  
1 qt. tomatoes (canned in tomato juice)  
1 qt. tomatoes (canned in tomato juice)
- Ring 3B—Unit III—Canning member only  
4 qts. vegetables (1 qt. tomatoes, 3 other varieties of vegetables)
- Ring 4B—For 4-H members having completed 3 units of canning (4th year)  
2 qts. fruit (2 varieties)  
1 qt. soap mixture  
2 qts. vegetables (2 varieties)  
1 qt. tomatoes

## CLASS 2—CANNING—Open Class

- Ring 5B—1 qt. whole tomatoes (canned in tomato juice)  
Ring 6B—1 qt. tomato juice (canned in tomato juice)  
Ring 7B—1 qt. string beans  
Ring 8B—1 qt. baby beans  
Ring 9B—1 qt. green string beans  
Ring 10B—1 qt. carrots  
Ring 11B—1 qt. soup mixture  
Ring 12B—1 qt. kraut  
Ring 13B—1 pt. corn  
Ring 14B—1 pt. peas  
Ring 15B—1 pt. lima beans  
Ring 16B—1 qt. cherries  
Ring 17B—1 qt. blackberries
- Ring 18B—1 qt. peaches  
Ring 19B—3 qt. pears  
Ring 20B—1 qt. apples (canned)  
Ring 21B—1 qt. apple sauce  
Ring 22B—1 pt. relish  
Ring 23B—1 pt. sweet pickles  
Ring 24B—1 pt. dill pickles  
Ring 25B—1 pt. beet pickles  
Ring 26B—1 pt. strawberry jam  
Ring 27B—1 pt. blackberry jam  
Ring 28B—1 pt. strawberry preserves  
Ring 29B—1 pt. peach preserves  
Ring 30B—1 pt. jelly

## CLASS 3—FOODS

- Only one entry in each ring.
  - Exhibit only in Unit where work was done.
- Ring 31B—Six brownies and six cookies (Six-up Goodies, Unit I)  
Ring 32B—Six biscuits (breakfast, Unit II)  
Ring 33B—Snack and Pack (Unit III)  
Ring 34B—Six corn sticks (Lunchbox, Unit IV)  
Ring 35B—Six rolls (Dinner, Unit V)  
Ring 36B—Six cookies  
Ring 37B—Six cup cakes  
Ring 38B—Butter cake, white or yellow (cand)  
Ring 39B—Chocolate or Devil's food cake  
Ring 40B—Angel food cake (not cand)  
Ring 41B—A hot bread  
Ring 42B—Six pieces fudge candy  
Ring 43B—Six pieces divinity candy  
Ring 44B—Six pieces peanut butter roll

## CLASS 4—CLOTHING

- Ring 45B—Exhibit only in Unit where work was done.  
Ring 46B—Apron  
Ring 47B—Skirt and Blouse  
Ring 48B—Pinafore  
Ring 49B—Sleeve and Match  
Ring 50B—Play Clothes  
Ring 51B—Dress and Dress  
Ring 52B—Formal  
Ring 53B—Semi-Formal  
Ring 54B—Tailored

## CLASS 5—ROOM IMPROVEMENT

- Ring 55B—4-H PROJECT—SCRAPBOOK  
Scrapbooks should be made from standard 3-ring notebooks and records and descriptions mounted on unlined paper. The scrapbook should include the following:

- Table of contents
- Recent snapshots of 4-H Club members
- Record of each project completed
- Story of each project
- Complete achievement story
- Drawings, sketches, pictures and snapshots
- Newspaper clippings
- Record and description of all ribbons won

## CLASS 7—FIELD AND GARDEN DEPARTMENT

- Chairmen: Quenton Casdill, Mike Fannin, Ted Pack  
Judge: Fred Watson
- Show only work done by member
  - Only one entry in each ring by a club member
- Ring 55B—Five Irish Potatoes  
Ring 56B—Five Sweet Potatoes  
Ring 57B—Five Turnips  
Ring 58B—Five Hot Dry Peppers  
Ring 59B—Five Sweet Peppers  
Ring 60B—Best Pumpkin  
Ring 61B—Best Cuslaw  
Ring 62B—One stock of unstripped tobacco
- Ring 63B—Ten Ear White corn  
Ring 64B—Ten Ear Yellow corn  
Ring 65B—Five Onions  
Ring 66B—Five Tomatoes  
Ring 67B—Best plate Apples  
Ring 68B—Jar Honey  
Ring 69B—Best Display

## CLASS 8—EGGS

- Ring 70B—Six Grad-A Eggs  
Ring 71B—Six Grad-B Eggs

## CLASS 9—WOODCRAFT

- Ring 72B—Age 9-13  
Ring 73B—Age 14-21

## CLASS 10—ELECTRIC

- Ring 74B—Age 9-13  
Ring 75B—Age 14-21

## Future Farmers of America

## F. F. A. EXHIBITS

Clay Banks and Arvil Crase, Department Heads  
Judge: Paul Morris

The Danish System of judging will be used. All entries must be in by 7:00 A.M. Wednesday, August 5, 1964.

- CLASS 1—PAPER WORK ... \$12.00 for class  
Ring 1C—Project Record Book ... \$3.00 \$2.00 1.00  
Ring 2C—Class Notebook ... 3.00 2.00 1.00
- CLASS 2—SHOP WORK ... \$6.00 for class  
Ring 3C—Metal Work ... 7.00 \$5.00 \$3.00  
Ring 4C—Woodwork ... 8.00 5.00 3.00  
Ring 5C—Wood and Metal ... 7.00 5.00 3.00
- CLASS 3—FIELD CROPS ... \$5.00 for class  
Ring 6C—Five ... Tobacco (on sticks) ... \$6.00 \$5.00 \$4.00  
Ring 7C—Three Hands Planted Leaf ... 5.00 4.00 3.00  
Ring 8C—Ten Ear White or Yellow Corn ... 6.00 5.00 4.00 3.00  
Ring 9C—Bunch Bay Leafage ... 5.00 4.00 3.00  
Ring 10C—Bunch Mixed Hay ... 5.00 4.00 3.00

- CLASS 4—GARDEN CROP ... \$50.00 for class  
Ring 11C—Five Onions ... \$4.00 \$3.00 \$2.00  
Ring 12C—Five Sweet Potatoes ... 4.00 3.00 2.50  
Ring 13C—Five Irish Potatoes ... 5.00 4.00 3.00  
Ring 14C—Hot Dry Peppers ... 3.25 2.75 2.25  
Ring 15C—Best Pumpkin ... 3.25 2.75 2.25  
Ring 16C—Other Vine Crops ... 5.00 4.00 3.00

- CLASS 5—REES ... \$12.00 for class  
Ring 17C—One Quart Honey ... \$2.00 \$1.00 1.00  
Ring 18C—Bee Equipment (Hand Made) ... 3.00 2.00 1.00  
Total money for FFA Division other than Livestock ... \$200.00  
KEEP DIVISION ... \$125.00 prize money  
Chairman: Bob Alley  
Judges: Roy Chubb, Jr. and L. C. Steggs  
Entries must be in by 10:00 A.M. Friday, August 7, 1964.

- CLASS 1—BEEF CATTLE OPEN CLASS  
Ring 1D—Best Heifer under 9 months of age  
Ring 2D—Best Bull under 9 months of age

- Ring 3D—Best Heifer or Cow over 9 months of age  
Ring 4D—Best Bull over 9 months of age  
Champion Heifer or Cow ... Rosette  
Champion Heifer or Cow ... Rosette

## Health Requirements For Beef And Dairy Show

CATTLE REQUIREMENTS: All cattle to be exhibited in Kentucky must be accompanied by an approved official health certificate indicating animals are healthy and showing the following:

- TUBERCULOSIS—Negative to the tuberculin test within sixty (60) days prior to exhibition unless they originate from an accredited tuberculosis-free herd or a negative herd originating in a modified accredited tuberculosis-free area and the herd was found to be negative within one (1) year from date of exhibition.
- BRUCELLOSIS—Females and bulls over six (6) months of age must be negative to blood test within thirty (30) days prior to exhibition unless one of the following applies:  
(a) Officially caulked brucellosis-vaccinated cattle under thirty (30) months of age are not to be tested.  
(b) Certified brucellosis-free herd—no brucellosis blood test required.  
(c) Cattle herd originating in a modified certified brucellosis-free area—females and bulls over six (6) months of age must be negative to blood test within ninety (90) days prior to exhibition.  
(d) Cattle herd tested during current year from date of exhibition and currently free of brucellosis infection—females and bulls over six (6) months of age must be negative to blood test within sixty (60) days prior to exhibition.  
(e) Cattle herd tested during ninety (90) days prior to the date of exhibition and currently free of brucellosis infection—no further brucellosis test required.

All brucellosis tests must be conducted at a State-Federal Laboratory. CLASS 7—TRACTOR DRIVING CONTEST. Prize money \$20.00

1:00 P.M. Friday, August 7, 1964

Ring 22D—Best Tractor Driver under 18 years of age	
1st	\$5.00
2nd	4.00
3rd	3.00
4th	2.00
5th	1.00
6th	1.00
7th	1.00

Ring 33D—Best Tractor Driver who attended Maintenance School at least four meetings in 1962 or 1963.

1st	\$5.00
2nd	4.00
3rd	3.00
4th	2.00
5th	1.00
6th	1.00
7th	1.00

An entry blank must be signed by the parent, releasing the Fair Board of any responsibility. All 4-H boys' blanks must be countersigned by the Vocational Agriculture Teacher. All other boys' blanks must be countersigned by the teacher of the school in which the boys attend.

## ADULT SECTION—MEN'S DEPARTMENT

Sam Litton, Sr., Chairman  
Judge: Fred Watson  
Fees must be in by 6:00 P.M. Wednesday, August 5, 1964.  
FIELD AND GARDEN CROPS ... \$133.00 Prize money  
CLASS 1—CORN ... \$26.40 for class

freshen your home for Fall at our

# August White Sale!

**PILLOWS**

Crushed White Duck and Crushed White Chicken Feathers

\$6.95 each

Crushed Chicken Feathers

\$2.98 pair

Crushed Chicken and Turkey Feathers

\$1.98 each

Dacron

\$3.98 each

80 Square

## Print

4 yds. for \$1.00.

Large Cannon Bath

## TOWELS

Pink, Yellow, White, Blue, Green, Gold

\$1.00 and \$2.00

Hand Towels to Match 50¢ & \$1.00

Wash Cloths to Match 29¢ & 39¢

20" x 40" Colored Cannon

## TOWELS

Blue, Pink, Green, Yellow

3 for \$1.00

White Chenille

## BEDSPREADS

\$2.98 to \$18.98

Quilted Polished Cotton

Yellow, Brown, Gold, Turquoise, Pink, White

\$14.98

White Cannon

## SHEETS

81x99 \$1.77  
81x106 \$2.98

Blue, Green, Pink, Lavender Yellow

81x99 \$2.98  
81x106 \$2.98

Pillow Cases to Match  
White \$8 pr.  
Colored \$12.99 pr.

# MARTIN'S

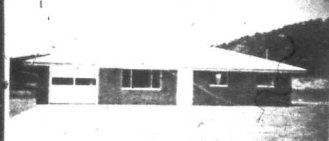
Main Street Morehead, Ky.



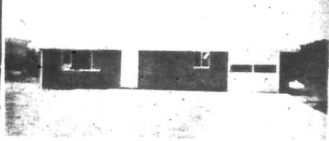
# FOR QUALITY AND VARIETY SEE Alpha Hutchinson for Real Estate

**CAMP SITES**—Approximately 13 miles southeast of Morehead, fronting on Lake Louise in Elliott County. On good blacktop road all the way. These camp sites can be leased. Will be happy to show at any time. Fishing, boating, hiking and lots of fun.

## NEW LISTINGS



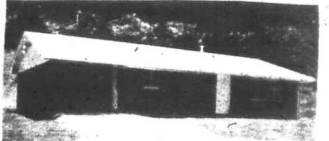
**NEW 3 BEDROOM BRICK**, with garage attached, central heat, ceramic tile bath, built-in kitchen, in Green Valley Acres 2 1/2 miles west of Morehead on good big lot 100' front and 200' deep. Priced to sell and ready for immediate occupancy.



**NEW 3 BEDROOM BRICK**, with garage attached, central heat, 1 1/2 baths, 1/2 bath in master bedroom, built-in kitchen, located in Green Valley Acres on GOOD BIG LOT 100' front on street and 200' deep. Being completed at this time and can be finished to your liking. Priced to sell quick.



**Almost new 3 BEDROOM BRICK**, with carport attached, on North Knapp Avenue, in the middle of town, central heat, built-in birch cabinets in kitchen, storm doors, beautifully landscaped, outside storage on carport, concrete drive from blacktop street. Priced to sell quick.



**NEW 3 BEDROOM BRICK**, 1 1/2 baths, carport attached, built-in kitchen, outside storage on carport. Located on good big lot fronting 100' on street in Sherwood Forest Subdivision, just outside the city of Morehead. Priced for quick sale.



**NEW STONE AND FRAME**, 3 bedroom dwelling with garage attached, 1 1/2 baths, fireplace in family room off kitchen, built-in kitchen, oven, range top, disposal, dish washer, plenty of good, big closets throughout house. On good big lot in Forest Heights Subdivision, just outside the city of Morehead, with city water, gas and sewer, street to be blacktopped at seller's expense. This house is priced to sell and the financing can be arranged with 25% down convention, 25 years to pay at 5 1/2% interest. P.H.A. financing with 10% down and up to 30 years at 5 1/2% interest. Look this one over and if you qualify you can select the finish colors inside, advise on landscaping and move in.



**NEW 3 BEDROOM BRICK** with double garage, 1 1/2 ceramic baths, fireplace, built-in kitchen cabinets with oven and range built-in. On good big lot in Forest Heights Subdivision just outside the city limits with all city utilities.



**Almost new 3 BEDROOM BRICK**, with full basement, 2 baths, one up and one down, built-in kitchen, bath in basement has shower, hot water, central heat, tile on basement floor and some rooms partitioned off, excellent tile on ceiling of basement. Located at 416 North Wilson Avenue. Priced to sell at \$18,000.00.



**FLEMINGSBURG ROAD AND BARBOUR COURT** — 1 am offering for Gladys Johnson, Executor for the estate of Maggie Caskey this very desirable property located on Flemingsburg Road and Barbour Court — street paved on 3 sides of this very desirable lot. Plenty of room for another building on lot fronting on Barbour Court. 2 bedroom dwelling, living room, dinette, kitchen, bath and full basement. Also, there is a small 3 room and bath cottage on this lot. Good investment property with business potential. Priced at only \$11,000.00.



**NEW, FRAME AND-STONE**, off Morgan Fork Road out of Clearfield, Ky. 3 bedrooms, bath, living room, kitchen, carport attached. Floor furnace. Aluminum windows, marble sills. Built-in kitchen. Real sharp. Good well on place. Priced for quick sale at \$11,500.00.



**ONE STORY FRAME**, breezeway and one car garage, 2 bedrooms, living room with dining area between living room and kitchen. Built-in kitchen cabinets. On 2 good lots 170' front and extending back 153'. Plenty of room for another dwelling on lots. Priced to sell quick.



**FLEMINGSBURG ROAD**—Six miles North on State Highway No. 32, three-bedroom brick, electrically heated with thermostat in each room; kitchen-family room; living room; 1 1/2 baths (ceramic); aluminum windows; storm doors and windows; built-in oven and range with hood over; paneled wainscoting in family room off kitchen, vent fans in kitchen and bath; plenty of closet space, all lighted; telephone wired for each room; well insulated; six-inch ceilings, three-inch floors and walls. On good big lot 100'x132'.



**2 FRAME DWELLINGS** and 3 acres land on U.S. Highway No. 60 on the Rowan-Carter line. One practically new 3-bedroom dwelling with large living room and built-in kitchen. One older four-room frame dwelling with 2 bedrooms. This is a good investment, live in one, rent the other. Priced for quick sale at \$12,000.00.



**NEW FRAME 5 ROOM DWELLING** and bath, not completely finished on Bull Fork Road approximately one mile from State Highway No. 32. Located on approximately one acre lot. This is a Jim Walter home and can be purchased on long term basis with very little down. Can rent with option to buy.



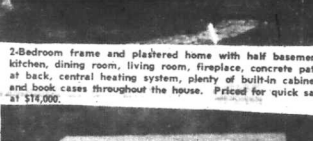
**3 BEDROOM GOLD MEDALION** in Green Valley Acres Subdivision, 3 miles west of Morehead off U.S. 60. 1 ceramic bath, living room, large kitchen and dining area with paneling on wall through the living room. Built-in kitchen with oven and range. Storm windows and doors. Carport attached. Good big lot. Priced to sell quick.



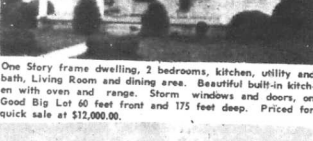
**1 1/2 Story frame dwelling** located in East End of Town adjoining Stone Used car lot on the West side. 6 rooms and bath down, one large room upstairs. Carport attached and large front porch. 2 1/2 lots fronting on U.S. 60. Priced at only \$13,500.00.



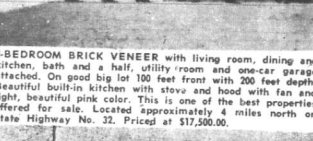
**BLAIR STREET, MOREHEAD, KY.** 3 rooms and bath with full basement. Also, on this lot is business building as is shown in the photo above. Priced for quick sale, house and business building \$10,000.00.



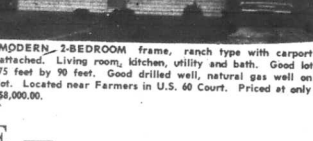
**2-Bedroom frame** and plastered home with half basement, kitchen, dining room, living room, fireplace, concrete patio at back, central heating system, plenty of built-in cabinets and book cases throughout the house. Priced for quick sale at \$16,000.



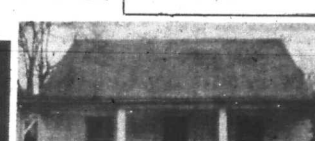
**One Story frame dwelling**, 2 bedrooms, kitchen, utility and bath, living room and dining area. Beautiful built-in kitchen with oven and range. Storm windows and doors, on Good Big Lot 60 feet front and 175 feet deep. Priced for quick sale at \$12,000.00.



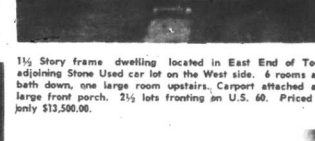
**3-BEDROOM BRICK VENEER** with living room, dining and kitchen, bath and a half utility room and one-car garage attached. On good big lot 100 feet front with 200 feet depth. Beautiful built-in kitchen with stove and hood with fan and light, beautiful pink color. This is one of the best properties offered for sale. Located approximately 4 miles north on State Highway No. 32. Priced at \$17,500.00.



**MODERN 2-BEDROOM frame**, ranch type with carport attached. Living room, kitchen, utility and bath. Good lot 75 feet by 90 feet. Good drilled well, natural gas well on lot. Located near Farmers in U.S. 60 Court. Priced at only \$8,000.00.



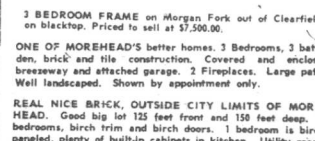
**1 1/2 STORY FRAME DWELLING** with detached garage in Thomas Addition, 4 bedrooms, (2 up and 2 down), living room with fireplace, enclosed back porch, concrete floor. Good big lot fronting 103 feet and good depth. Priced at \$14,500.00.



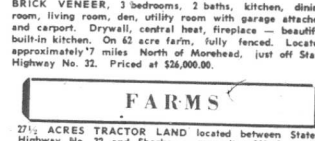
**NORTH KNAPP AVENUE**—8 Rooms and bath. Good big lot. Dwelling completely remodeled. All new sheetrock, wiring, flooring and plumbing. Priced to sell at \$14,900.



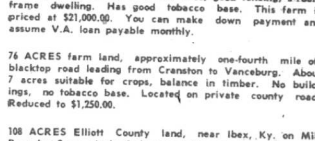
**3 BEDROOM FRAME** on Morgan Fork out of Clearfield on blacktop. Priced to sell at \$7,500.00.



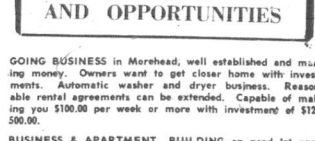
**ONE OF MOREHEAD'S** better homes. 3 Bedrooms, 3 baths, den, brick and tile construction. Covered and enclosed breezeway and attached garage. 2 fireplaces. Large patio. Well landscaped. Shown by appointment only.



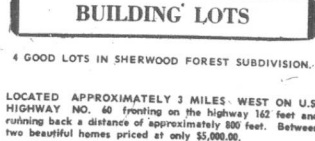
**REAL NICE BRICK, OUTSIDE CITY LIMITS OF MOREHEAD.** Good big lot 125 feet front and 150 feet deep. 3 bedrooms, birch trim and birch doors. 1 bedroom is birch paneled, plenty of built-in cabinets in kitchen. Utility room, 2 ceramic tiled bathrooms, one with tub and other with shower. Covered back porch-patio. Fireplace, family room, plenty of TV and phone outlets in house. Carpet in living room, dining room and hall. Vent fan in hall. Real nice at \$23,000.00.



**BRICK VENEER**, 3 bedrooms, 2 baths, kitchen, dining room, living room, den, utility room with garage attached and carport. Drywall, central heat, fireplace — beautiful built-in kitchen. On 62 acre farm, fully fenced. Located approximately 7 miles North of Morehead, (just off State Highway No. 32. Priced at \$26,000.00.



**147 ACRE FARM** located on Moore Flat between Sharkey and Farmers. 48 acre tobacco base, good fencing, 5-room frame dwelling. Has good tobacco base. This farm is priced at \$21,000.00. You can make down payment and assume V.A. loan payable monthly.



**76 ACRES farm land**, approximately one-fourth mile off blacktop road leading from Cranston to Vanceburg. About 7 acres suitable for crops, balance in timber. No buildings, no tobacco base. Located on private county road. Reduced to \$12,500.00.

**108 ACRES Elliott County land**, near Ilex, Ky, on Mill Branch. Some virgin timber consisting of pine, poplar, oak, walnut and locust. Has not been cut over for over 43 years. Priced at only \$5,000.00.

## HOMES

## FARMS

## BUSINESS PROPERTY AND OPPORTUNITIES

## BUILDING LOTS

# SEE — ALPHA HUTCHINSON REAL ESTATE AGENCY

Licensed and Bonded Real Estate Broker  
Authorized Mortgage Loan Broker For The Prudential  
Insurance Company of America  
(FHA, GI, AND CONVENTIONAL LOANS)

— Phone —  
784-5305 or 784-4196

MOREHEAD, KY.





# Premium List And Program --1964 Rowan County Fair

## Kentucky Needs More Nuts-- The Kind Borne By Trees

**make your own TV TEST**

(Circle correct personality with pencil. Add score to bottom.)

1. Romantic letter in "Missing Bank of Rupert X. Humphreys".  
Gerard Hiken, Gary Clarke, Ted Andrews.

2. Regular on "The Virginian" Series.  
Gary Clarke, Leo Victor, Meg Miles.

3. Title story, "Mr. Novak".  
Gary Merrill, Gary Crosby, James Franciscus.

4. Comedian who has role of Joey Borne.  
Joe Miller, Joey Bishop, Bill Dana.

5. He's "Little Joe" of "Bonanza".  
Dan Blocker, Lorne Greene, Michael Landon.

Kentucky needs more nuts, and the State Department of Natural Resources will be happy to try for them.

The kind they're interested in grow on trees--black walnuts in scores, pine cones or balls, yellow poplar pods, etc. The seeds are needed for planting in the Division of Forestry's trees seedling nurseries which annually produce 16 million seedlings used in reforestation.

A tree seed improvement program is now under way to provide high quality seeds and develop new hybrid varieties especially suited to Kentucky. But until the seed orchards reach full development the State will have to buy seeds locally to keep up with demand in the nurseries.

State district foresters should be contacted for information on how much and what kind are in demand.

Shop The Classified Ads

Continued from Page 7

Ring 92--Three Squash	2.50	1.00	1.00
Ring 102--Best Five Onion Potatoes, any variety	2.50	1.00	1.00
Ring 112--Best Five Sweet Potatoes, any variety	2.50	1.00	1.00
Ring 122--Best Five Onions, any variety	2.50	1.00	1.00
Ring 132--Best Five Potatoes, any variety	2.50	1.00	1.00
Ring 142--Best Five Apples	2.50	1.00	1.00
Ring 152--Best Five Apples	2.50	1.00	1.00
Ring 162--Best Five Apples	2.50	1.00	1.00
Ring 172--Best Five Apples	2.50	1.00	1.00
Ring 182--Best Five Apples	2.50	1.00	1.00
Ring 192--Best Five Apples	2.50	1.00	1.00
Ring 202--Best Five Apples	2.50	1.00	1.00
Ring 212--Best Five Apples	2.50	1.00	1.00
Ring 222--Best Five Apples	2.50	1.00	1.00
Ring 232--Best Five Apples	2.50	1.00	1.00
Ring 242--Best Five Apples	2.50	1.00	1.00
Ring 252--Best Five Apples	2.50	1.00	1.00
Ring 262--Best Five Apples	2.50	1.00	1.00
Ring 272--Best Five Apples	2.50	1.00	1.00
Ring 282--Best Five Apples	2.50	1.00	1.00
Ring 292--Best Five Apples	2.50	1.00	1.00
Ring 302--Best Five Apples	2.50	1.00	1.00
Ring 312--Best Five Apples	2.50	1.00	1.00
Ring 322--Best Five Apples	2.50	1.00	1.00
Ring 332--Best Five Apples	2.50	1.00	1.00
Ring 342--Best Five Apples	2.50	1.00	1.00
Ring 352--Best Five Apples	2.50	1.00	1.00
Ring 362--Best Five Apples	2.50	1.00	1.00
Ring 372--Best Five Apples	2.50	1.00	1.00
Ring 382--Best Five Apples	2.50	1.00	1.00
Ring 392--Best Five Apples	2.50	1.00	1.00
Ring 402--Best Five Apples	2.50	1.00	1.00
Ring 412--Best Five Apples	2.50	1.00	1.00
Ring 422--Best Five Apples	2.50	1.00	1.00
Ring 432--Best Five Apples	2.50	1.00	1.00
Ring 442--Best Five Apples	2.50	1.00	1.00
Ring 452--Best Five Apples	2.50	1.00	1.00
Ring 462--Best Five Apples	2.50	1.00	1.00
Ring 472--Best Five Apples	2.50	1.00	1.00
Ring 482--Best Five Apples	2.50	1.00	1.00
Ring 492--Best Five Apples	2.50	1.00	1.00
Ring 502--Best Five Apples	2.50	1.00	1.00
Ring 512--Best Five Apples	2.50	1.00	1.00
Ring 522--Best Five Apples	2.50	1.00	1.00
Ring 532--Best Five Apples	2.50	1.00	1.00
Ring 542--Best Five Apples	2.50	1.00	1.00
Ring 552--Best Five Apples	2.50	1.00	1.00
Ring 562--Best Five Apples	2.50	1.00	1.00
Ring 572--Best Five Apples	2.50	1.00	1.00
Ring 582--Best Five Apples	2.50	1.00	1.00
Ring 592--Best Five Apples	2.50	1.00	1.00
Ring 602--Best Five Apples	2.50	1.00	1.00
Ring 612--Best Five Apples	2.50	1.00	1.00
Ring 622--Best Five Apples	2.50	1.00	1.00
Ring 632--Best Five Apples	2.50	1.00	1.00
Ring 642--Best Five Apples	2.50	1.00	1.00
Ring 652--Best Five Apples	2.50	1.00	1.00
Ring 662--Best Five Apples	2.50	1.00	1.00
Ring 672--Best Five Apples	2.50	1.00	1.00
Ring 682--Best Five Apples	2.50	1.00	1.00
Ring 692--Best Five Apples	2.50	1.00	1.00
Ring 702--Best Five Apples	2.50	1.00	1.00
Ring 712--Best Five Apples	2.50	1.00	1.00
Ring 722--Best Five Apples	2.50	1.00	1.00
Ring 732--Best Five Apples	2.50	1.00	1.00
Ring 742--Best Five Apples	2.50	1.00	1.00
Ring 752--Best Five Apples	2.50	1.00	1.00
Ring 762--Best Five Apples	2.50	1.00	1.00
Ring 772--Best Five Apples	2.50	1.00	1.00
Ring 782--Best Five Apples	2.50	1.00	1.00
Ring 792--Best Five Apples	2.50	1.00	1.00
Ring 802--Best Five Apples	2.50	1.00	1.00
Ring 812--Best Five Apples	2.50	1.00	1.00
Ring 822--Best Five Apples	2.50	1.00	1.00
Ring 832--Best Five Apples	2.50	1.00	1.00
Ring 842--Best Five Apples	2.50	1.00	1.00
Ring 852--Best Five Apples	2.50	1.00	1.00
Ring 862--Best Five Apples	2.50	1.00	1.00
Ring 872--Best Five Apples	2.50	1.00	1.00
Ring 882--Best Five Apples	2.50	1.00	1.00
Ring 892--Best Five Apples	2.50	1.00	1.00
Ring 902--Best Five Apples	2.50	1.00	1.00
Ring 912--Best Five Apples	2.50	1.00	1.00
Ring 922--Best Five Apples	2.50	1.00	1.00
Ring 932--Best Five Apples	2.50	1.00	1.00
Ring 942--Best Five Apples	2.50	1.00	1.00
Ring 952--Best Five Apples	2.50	1.00	1.00
Ring 962--Best Five Apples	2.50	1.00	1.00
Ring 972--Best Five Apples	2.50	1.00	1.00
Ring 982--Best Five Apples	2.50	1.00	1.00
Ring 992--Best Five Apples	2.50	1.00	1.00
Ring 1002--Best Five Apples	2.50	1.00	1.00

### F. H. A. EXHIBITS

Mrs. W. H. Rice  
Mrs. Norman Roberts  
Miss Rouja Jean Cline

(Judge: Mrs. Betty Ellis; Miss Martha Davis, Student Teachers, Morehead State College.)

CLASS 1--SUMMER PROJECTS	\$60.00 for class
Ring 1A--All project entries will receive the rating of either first, second, or third. The money for each rating will be distributed equally among the winners.	
CLASS 2--CLASS NOTEBOOKS	\$15.00 for class
Ring 2A--First Year Home Economics	
Ring 3A--Second Year Home Economics	
Ring 4A--Third Year Home Economics	
Ring 5A--Fourth Year Home Economics	
CLASS 3--FOOD PRESERVATION	\$30.00 for class
Ring 3A--Apples	
Ring 4A--Baccharies	
Ring 7A--Peaches	
Ring 8A--Tomatoes	
Ring 9A--Tomato Juice	
Ring 10A--Green Beans	
Ring 11A--Beets	
Ring 12A--Peppers	
Ring 13A--Jellies	
Ring 14A--Preserves	
Ring 15A--Pickles	
Ring 16A--Miscellaneous Foods	
CLASS 4--COOKING-ADULT BAKING	\$15.00 for class
Ring 17A--Cup Cakes	
Ring 18A--White Cake	
Ring 19A--Chocolate Cake	
Ring 20A--Pie of Six Biscuits	
Ring 21A--Pie of Six Muffins	
Ring 22A--Pie of Cornbread	
Ring 23A--Angel Food Cake	
Ring 24A--Sandwich Variety	
CLASS 5--CLOTHING-DAY SCHOOL CLASSES	\$30.00 for class
Ring 25A--Dress of Cotton	
Ring 26A--Wood Garment	
Ring 27A--Dress of Cotton	
Ring 28A--Wood Suit	
Ring 29A--Skirt (made by Bishop Method of Construction)	
Ring 30A--Skirt (made by Bishop Method of Construction)	
Ring 31A--Apron (utility)	
Ring 32A--Knitted Garment of Accessory	
Ring 33A--Miscellaneous Articles--Accessories, etc.	
CLASS 6--CLOTHING-ADULT CLASS MEMBERS	\$20.00 for class
Ring 34A--Cotton Blouse	
Ring 35A--Cotton Dress	
Ring 36A--Tailored Wool Garment	
Ring 37A--Covered Shoes for the Costume	
Ring 38A--Knitted Garment	
Ring 39A--Knitted Garment	
Ring 40A--Miscellaneous Articles--Flowers, Bags, Trimmings	
Ring 41A--Miscellaneous Articles--Flowers, Bags, Trimmings	
CLASS 7--FLOWER ARRANGEMENT	\$10.00 for class
Ring 42A--Informal Arrangement	
Ring 43A--Wild Flower Arrangement	
Ring 44A--Novelty Arrangement	
Ring 45A--Novelty Arrangement	
Ring 46A--Novelty Arrangement	
Ring 47A--Novelty Arrangement	
Ring 48A--Novelty Arrangement	
Ring 49A--Novelty Arrangement	
Ring 50A--Novelty Arrangement	
Ring 51A--Novelty Arrangement	
Ring 52A--Novelty Arrangement	
Ring 53A--Novelty Arrangement	
Ring 54A--Novelty Arrangement	
Ring 55A--Novelty Arrangement	
Ring 56A--Novelty Arrangement	
Ring 57A--Novelty Arrangement	
Ring 58A--Novelty Arrangement	
Ring 59A--Novelty Arrangement	
Ring 60A--Novelty Arrangement	
Ring 61A--Novelty Arrangement	
Ring 62A--Novelty Arrangement	
Ring 63A--Novelty Arrangement	
Ring 64A--Novelty Arrangement	
Ring 65A--Novelty Arrangement	
Ring 66A--Novelty Arrangement	
Ring 67A--Novelty Arrangement	
Ring 68A--Novelty Arrangement	
Ring 69A--Novelty Arrangement	
Ring 70A--Novelty Arrangement	
Ring 71A--Novelty Arrangement	
Ring 72A--Novelty Arrangement	
Ring 73A--Novelty Arrangement	
Ring 74A--Novelty Arrangement	
Ring 75A--Novelty Arrangement	
Ring 76A--Novelty Arrangement	
Ring 77A--Novelty Arrangement	
Ring 78A--Novelty Arrangement	
Ring 79A--Novelty Arrangement	
Ring 80A--Novelty Arrangement	
Ring 81A--Novelty Arrangement	
Ring 82A--Novelty Arrangement	
Ring 83A--Novelty Arrangement	
Ring 84A--Novelty Arrangement	
Ring 85A--Novelty Arrangement	
Ring 86A--Novelty Arrangement	
Ring 87A--Novelty Arrangement	
Ring 88A--Novelty Arrangement	
Ring 89A--Novelty Arrangement	
Ring 90A--Novelty Arrangement	
Ring 91A--Novelty Arrangement	
Ring 92A--Novelty Arrangement	
Ring 93A--Novelty Arrangement	
Ring 94A--Novelty Arrangement	
Ring 95A--Novelty Arrangement	
Ring 96A--Novelty Arrangement	
Ring 97A--Novelty Arrangement	
Ring 98A--Novelty Arrangement	
Ring 99A--Novelty Arrangement	
Ring 100A--Novelty Arrangement	

CLASS 8--CHILD CARE	\$10.00 for class
Ring 8A--Child's Homemade Toy	
Ring 8B--Baby-Sitter's Kit	
CLASS 9--HANDICRAFT	\$20.00 for class
Ring 9A--Wooden Handicraft	
Ring 9B--Metal Handicraft	
Ring 9C--Miscellaneous Handicraft	
CLASS 10--CRAFTSMEN HANDICRAFT	\$40.00 for class
(This class is open to Day-School and Adult Class Members. Entries for each rating will be determined by the number of entries in the Ring.)	
Ring 10A--Cumberland Foothill Arrangements using Pops, Coats, Drapes, Driftwood, and Wooden Craftsmen.	
Ring 10B--Wall-Hanging Arrangement using Pops, Coats, Drapes, etc.	
Ring 10C--Wall-Hanging Arrangement using Pops, Coats, Drapes, etc.	
Ring 10D--Novelty Candies	
Ring 10E--Novelty Candies	
Ring 10F--Novelty Candies	
Ring 10G--Novelty Candies	
Ring 10H--Novelty Candies	
Ring 10I--Novelty Candies	
Ring 10J--Novelty Candies	
Ring 10K--Novelty Candies	
Ring 10L--Novelty Candies	
Ring 10M--Novelty Candies	
Ring 10N--Novelty Candies	
Ring 10O--Novelty Candies	
Ring 10P--Novelty Candies	
Ring 10Q--Novelty Candies	
Ring 10R--Novelty Candies	
Ring 10S--Novelty Candies	
Ring 10T--Novelty Candies	
Ring 10U--Novelty Candies	
Ring 10V--Novelty Candies	
Ring 10W--Novelty Candies	
Ring 10X--Novelty Candies	
Ring 10Y--Novelty Candies	
Ring 10Z--Novelty Candies	

### ADULT SECTION--WOMEN'S DEPARTMENT

Mrs. Tommy Casdill, Department Head  
Judges: Wanda Dotson and Virginia Peed

1. Only one entry per person in each ring.	
2. All entries must be in between 12:00 Noon and 6:00 P.M. Wednesday, Aug. 5.	
3. Entries cannot be taken out until 12:00 Noon Saturday, Aug. 8 and must be removed by 2:00 P.M. Saturday, Aug. 8.	
4. Judges reserve right to taste canned goods and foods.	
1. CANNING DIVISION	\$75.00 for Division
Chairmen: Mrs. Oval Siddom and Mrs. Opal Bess	
Only standard size quart or pint jars may be used.	
CLASS 1--FRUITS	\$12.25 for class
Ring 1F--Canned Peaches	\$1.00 75 50
Ring 2F--Canned Pears	1.00 75 50
Ring 3F--Canned Berries	1.00 75 50
Ring 4F--Canned Apples	1.00 75 50
Ring 5F--Apple Sauce	1.00 75 50
CLASS 2--VEGETABLES	\$12.25 for class
Ring 6F--Canned Beans	\$1.00 75 50
Ring 7F--Canned Beans	1.00 75 50
Ring 8F--Canned Corn (pints only)	1.00 75 50
Ring 9F--Canned Corn (pints only)	1.00 75 50
Ring 10F--Canned Lima Beans	1.00 75 50
Ring 11F--Canned Tomatoes	1.00 75 50
Ring 12F--Canned Tomatoes	1.00 75 50
Ring 13F--Assortment of Fruits & Vegetables	2.00 1.00 50
Ring 14F--Pickled Beets	1.00 75 50
Ring 15F--Canned Tomato Juice	1.00 75 50
Ring 16F--Canned Carrots	1.00 75 50
Ring 17F--Canned Peas (pints only)	1.00 75 50
CLASS 3--PICKLES	\$4.50 for class
Ring 18F--Pickles (pints only)	\$1.00 75 50
Ring 19F--Dill Pickles (pints only)	1.00 75 50
CLASS 4--JELLIES (May use regular jelly jars)	\$6.00 for class
Ring 20F--Blackberry	\$1.00 75 50
Ring 21F--Apple	1.00 75 50
Ring 22F--Peach	1.00 75 50
Ring 23F--Raspberry	1.00 75 50
Ring 24F--Blackberry	\$1.00 75 50
Ring 25F--Peach	1.00 75 50
Ring 26F--Raspberry	1.00 75 50
Ring 27F--Blackberry	1.00 75 50
Ring 28F--Peach	1.00 75 50
Ring 29F--Raspberry	1.00 75 50
Ring 30F--Blackberry	1.00 75 50
Ring 31F--Apple	1.00 75 50
Ring 32F--Peach	1.00 75 50
Ring 33F--Raspberry	1.00 75 50
Ring 34F--Blackberry	1.00 75 50
Ring 35F--Peach	1.00 75 50
Ring 36F--Raspberry	1.00 75 50
Ring 37F--Blackberry	1.00 75 50
Ring 38F--Peach	1.00 75 50
Ring 39F--Raspberry	1.00 75 50
Ring 40F--Blackberry	1.00 75 50
Ring 41F--Apple	1.00 75 50
Ring 42F--Peach	1.00 75 50
Ring 43F--Raspberry	1.00 75 50
Ring 44F--Blackberry	1.00 75 50
Ring 45F--Peach	1.00 75 50
Ring 46F--Raspberry	1.00 75 50
Ring 47F--Blackberry	1.00 75 50
Ring 48F--Peach	1.00 75 50
Ring 49F--Raspberry	1.00 75 50
Ring 50F--Blackberry	1.00 75 50
Ring 51F--Apple	1.00 75 50
Ring 52F--Peach	1.00 75 50
Ring 53F--Raspberry	1.00 75 50
Ring 54F--Blackberry	1.00 75 50
Ring 55F--Peach	1.00 75 50
Ring 56F--Raspberry	1.00 75 50
Ring 57F--Blackberry	1.00 75 50
Ring 58F--Peach	1.00 75 50
Ring 59F--Raspberry	1.00 75 50
Ring 60F--Blackberry	1.00 75 50
Ring 61F--Apple	1.00 75 50
Ring 62F--Peach	1.00 75 50
Ring 63F--Raspberry	1.00 75 50
Ring 64F--Blackberry	1.00 75 50
Ring 65F--Peach	1.00 75 50
Ring 66F--Raspberry	1.00 75 50
Ring 67F--Blackberry	1.00 75 50
Ring 68F--Peach	1.00 75 50
Ring 69F--Raspberry	1.00 75 50
Ring 70F--Blackberry	1.00 75 50
Ring 71F--Apple	1.00 75 50
Ring 72F--Peach	1.00 75 50
Ring 73F--Raspberry	1.00 75 50
Ring 74F--Blackberry	1.00 75 50
Ring 75F--Peach	1.00 75 50
Ring 76F--Raspberry	1.00 75 50
Ring 77F--Blackberry	1.00 75 50
Ring 78F--Peach	1.00 75 50
Ring 79F--Raspberry	1.00 75 50
Ring 80F--Blackberry	1.00 75 50
Ring 81F--Apple	1.00 75 50
Ring 82F--Peach	1.00 75 50
Ring 83F--Raspberry	1.00 75 50
Ring 84F--Blackberry	1.00 75 50
Ring 85F--Peach	1.00 75 50
Ring 86F--Raspberry	1.00 75 50
Ring 87F--Blackberry	1.00 75 50
Ring 88F--Peach	1.00 75 50
Ring 89F--Raspberry	1.00 75 50
Ring 90F--Blackberry	1.00 75 50
Ring 91F--Apple	1.00 75 50
Ring 92F--Peach	



**JULY SPECIAL - 2 Dozen Chix Diapers for \$8.00**  
**WE HAVE A COMPLETE LINE OF**  
**Infant Wear and Supplies**

Receiving Blankets • Diapers • Training Pants  
 Regular Diapers \$2.25 doz. • Prefold Diapers \$2.75 doz.  
 Everything for the Infant at the Lowest Prices in Town -

**CRADLE SHOPPE**  
 (Located in Boys-Turner TV & Radio Repair Shop)  
 WEST MAIN STREET MOREHEAD

**REVIVAL**  
 - AND -  
**HOME COMING**

First Free Will Baptist Church  
 West Main St., Morehead, Ky.

Revival Starts  
**SATURDAY, AUG. 1, 1964**  
 Time: 7:30 P.M.

Evangelist: Rev. Charles Thigpen, Dean of the Free Will Baptist Bible College, Nashville, Tennessee

Come Hear This Man of God, Truly One of the Greatest Preachers of Today

**Choir and Special Singing**  
 Each Evening

**HOMECOMING AUG. 9, 1964**  
**SPECIAL SINGING**

We Cordially Invite You to Worship With Us In These Services

**TED GREEN, PASTOR**

**Schedule Given -**  
 (Continued from page one)  
 structure will be over a half-mile long—2,865 feet and will likely have a road across the top; Cave Run is one of many reservoirs in the broad and comprehensive program for the vast Ohio River basin, and hydro-electric power is not contemplated.

**FAVORABLE RATIO**  
 Col. Roper said the engineers had given Cave Run a benefit-ratio of 1.8. (This is all important in Congressional appropriations. The 1.8 figure means that benefits, as compared to the cost, will be almost double the cost of maintenance, amortization of the original cost etc.)

Cave Run, at maximum pool, extends 66 river miles.

One of the questions asked Col. Roper from the floor was "How long will the shoreline be?" He said this hadn't been fully determined, adding: "I can tell you it will be longer...this is a big reservoir." (Previous estimates are that this alone will be more than 300 miles.)

It was also brought out Friday that the seasonal pool stage will extend to Boone County, but not to West Liberty. The maximum pool would reach the Morgan County line. The maximum pool (major floods) would occur, on the average, about every 25 years according to one of the engineers who was questioned.

Water Will Spread out  
 Boone, Bath and Menifee counties will be primarily affected by Cave Run. Maps shown Friday revealed wide lakes in the Paragon area (North Fork of Licking) in Rowan and the Beaver Creek section of Mingo.

It was explained at the outset of the meeting that real estate in the area is being sold for the purpose of this, the first public gathering in five years.

Col. Roper said these hearings will probably be held regularly called in September or October.

But, the question acquiring land came up during the discussion, leading Col. Roper to comment, "We buy churches, mineral rights and the like in the valley." He later added: "Depend on it—we don't swindle anybody."

**OWN ALL FRONTAGE**  
 It was explained the government purchases all real estate back 300 feet from the lake, or five (sea level) feet above the maximum (flood) pool. This is called the fringe area, and it means the United States in line with policy at all such projects owns all the shoreline. The fringe depth could be more than 300 feet on gradual slopes.

This fringe land is generally used for recreation, and is open to the public. Col. Roper explained that more than one person, classified as a community, could have a site for a boat dock etc. and obtain permission to build walkways etc. over government land to the lake.

He said it is possible the Commonwealth of Kentucky might desire to lease all the fringe land and administer the policy, or, in some cases, the State (leased for \$1) certain areas or tracts for parks and recreational sites.

"I urge the people of the four-county area to give much thought this year to the formation of a cooperative organization so that you can get the most benefits from Cave Run," Col. Roper declared. He went to set out that such important factors as zoning, public health and administration of the government land are local and state problems.

The government pays for the relocation of existing roads, and also construction of access roads within the project.

**RECREATION AREA**  
 In its cost-benefit ratio the engineers anticipate a minimum of 750,000 visitors, and that is the minimum for the year. But Col. Roper said he thought this was a conservative figure, adding that he estimated 1,000,000 visitors.

Several slides accompanied Col. Roper. Representing the State was Steve Wolfchild, Director of the Division of Flood Control and Water Resources Development. He also had assistants present, but few of the questions were directed to the state's participation.

Cave Run bore the endorsement of former Governors A. B. Chandler and Bert Condit and is supported by U. S. Senators John Sherman Cooper and Thurston Morton and Sen. West's District Congressman Carl D. Perkins.

Perkins has spearheaded the project in Congress.

The House of Representatives has already passed the budget bill for fiscal 1965, which carries an appropriation of \$1,500,000 for Cave Run. This is what the engineers said they could spend the first year. The additional \$4 million will, if precedent is followed, be allocated by Congress over the next four years.

**SOME DAMAGE**—Keith May, left, and John E. County Agent Adrian Rizer said Caldwell, Ky., examining a tobacco crop damaged by the tobacco crop of Otis Caldwell, near Farm.

**Hail Holes Here**  
 County Agent Adrian Rizer said Caldwell's tobacco was damaged this week, as well as a few other crops in the county.

**Rowan Jail Easily Breached**  
 County agents now being held for safekeeping in the Winchester jail, because of the apparent ease with which the local jail can be breached.

One of the men, Ray Igo, 35, of Carter County, has forced his way out of the Rowan County jail within one week—two days, he is reported to have done.

One of the men, Ray Igo, 35, of Carter County, has forced his way out of the Rowan County jail within one week—two days, he is reported to have done.

One of the men, Ray Igo, 35, of Carter County, has forced his way out of the Rowan County jail within one week—two days, he is reported to have done.

**Fossil Area Tours Slated In August**  
 Tours of the fossil-digging area at Big Lake State Park in Boone County are being held each Sunday during August, Parks Commissioner Robert D. Bell has reported.

A description of the open pits excavated during the past two summers and of the displays of fossils nearby will be provided for visitors on the Sunday visits, starting at 2 p.m., according to Parks Superintendent Roger Arnold.

The pits are about one-quarter mile from the park area. En route to the excavation area, visitors will be shown Big Bone Springs, where levels of buffalo bogged in the quicksand millions of years ago.

This is the 2nd six-week summer dig—a five-year excavation program which has already unearthed thousands of fossils, many of much value in reconstructing thousands of years in the area, according to Dr. C. B. Schilke. He was director of the University of Nebraska State Museum and geology professor at the University.

The University is conducting the six-week study each summer in cooperation with the Robinson Natural History Museum of Covington, the Big Bone Historical Association, the U. S. Geological Survey, and the Kentucky Department of Parks.

Bedrock in the hills around the 17-acre excavation site

**Moore's Drywall**  
 Ralph Moore  
 Morehead

**Complete Ambulance Service**  
**Oxygen Equipped**  
**"Equipped To Serve You"**

Member of Kentucky Funeral Director's Burial Association

Authorized To Service — Burial Insurance Contracts Issued By COMMONWEALTH LIFE INSURANCE CO.

**LANE FUNERAL HOME**  
 Phone 784-4134 — Morehead, Ky.

**Moore's Drywall**  
 Ralph Moore  
 Morehead

**Complete Ambulance Service**  
**Oxygen Equipped**  
**"Equipped To Serve You"**

**Authorized To Service — Burial Insurance Contracts Issued By COMMONWEALTH LIFE INSURANCE CO.**

**LANE FUNERAL HOME**  
 Phone 784-4134 — Morehead, Ky.

**Moore's Drywall**  
 Ralph Moore  
 Morehead

**Complete Ambulance Service**  
**Oxygen Equipped**  
**"Equipped To Serve You"**



Some damage to tobacco crops in Rowan County, Ky., is shown in this photo. Caldwell, Ky., examining a tobacco crop damaged by the tobacco crop of Otis Caldwell, near Farm.

**Moore's Drywall**  
 Ralph Moore  
 Morehead

**Complete Ambulance Service**  
**Oxygen Equipped**  
**"Equipped To Serve You"**

**Authorized To Service — Burial Insurance Contracts Issued By COMMONWEALTH LIFE INSURANCE CO.**

**LANE FUNERAL HOME**  
 Phone 784-4134 — Morehead, Ky.

**Moore's Drywall**  
 Ralph Moore  
 Morehead

**Complete Ambulance Service**  
**Oxygen Equipped**  
**"Equipped To Serve You"**

**Authorized To Service — Burial Insurance Contracts Issued By COMMONWEALTH LIFE INSURANCE CO.**

**LANE FUNERAL HOME**  
 Phone 784-4134 — Morehead, Ky.

**Moore's Drywall**  
 Ralph Moore  
 Morehead

**Complete Ambulance Service**  
**Oxygen Equipped**  
**"Equipped To Serve You"**

**Authorized To Service — Burial Insurance Contracts Issued By COMMONWEALTH LIFE INSURANCE CO.**

**LANE FUNERAL HOME**  
 Phone 784-4134 — Morehead, Ky.

**Moore's Drywall**  
 Ralph Moore  
 Morehead

**'Jr. Olympics' Termed Success By Association**  
 Results of the first Rowan County "Junior Olympics" sponsored jointly by the Morehead-Rowan County Recreation Association and the Morehead Junior Chamber of Commerce, were announced this week.

Bob Verboven, director of the Recreation Association, and Pete Verboven, who were the winners:

Broad jump (11-13) Drew Lane, 14-16, Gary Gruda.  
 High jump, Marc Holbrook.  
 Shot put, Gary Grubb.  
 Football throw (11-14) Sonny Jones; 15-16, Danny Corsett.  
 Softball throw (11 and under), C. W. Corsett, 12 and over, Sonny Jones.

50-yard dash, Drew Lane.  
 400-yard shuttle, J. T. Hill, J. Barker, C. Caudill, and J. Lambert.  
 100-yard dash, John Hatton.  
 25 yards backwards, Jim Barker.  
 50-yard wheelbarrow, Steve Calvert and Drew Lane.  
 800-yard run, Gary Grubb.

Softball throw, Gary Duff.  
 Standing broad jump, Nancy Hamilton.  
 50-yard dash, Jane Pierce.  
 50-yard three legged, Susan Allen and Barbara Casper.  
 50-yard dash, Sheila Morgan.  
 25 yards backwards, Pam Saunders.  
 25-yard wheelbarrow, Barbara Holbrook and Susan Allen.  
 Verboven said coordination of the meet was handled by Ronald Hart and Paul Warner, made the meet a success.

**Public Gets 'Short End' In Courts**  
 "If anybody gets the short end of the stick in this court it's the public and not the defendant," said Judge John S. Palmore of the State Court of Appeals, addressing some 800 judges and police officials at the State's more uniformity in their traffic court procedures and adopt a "get-tough" policy toward proven violators.

State Public Safety Commissioner Glenn A. Lovern outlined proposed changes in the State's driver's point system which will be aired in a public hearing at a later date.

The proposed changes in the driver's point system which will be aired in a public hearing at a later date.

The proposed changes in the driver's point system which will be aired in a public hearing at a later date.

**Fossil Area Tours Slated In August**  
 Tours of the fossil-digging area at Big Lake State Park in Boone County are being held each Sunday during August, Parks Commissioner Robert D. Bell has reported.

A description of the open pits excavated during the past two summers and of the displays of fossils nearby will be provided for visitors on the Sunday visits, starting at 2 p.m., according to Parks Superintendent Roger Arnold.

The pits are about one-quarter mile from the park area. En route to the excavation area, visitors will be shown Big Bone Springs, where levels of buffalo bogged in the quicksand millions of years ago.

This is the 2nd six-week summer dig—a five-year excavation program which has already unearthed thousands of fossils, many of much value in reconstructing thousands of years in the area, according to Dr. C. B. Schilke. He was director of the University of Nebraska State Museum and geology professor at the University.

**Moore's Drywall**  
 Ralph Moore  
 Morehead

**Complete Ambulance Service**  
**Oxygen Equipped**  
**"Equipped To Serve You"**

**Authorized To Service — Burial Insurance Contracts Issued By COMMONWEALTH LIFE INSURANCE CO.**

**LANE FUNERAL HOME**  
 Phone 784-4134 — Morehead, Ky.

**Moore's Drywall**  
 Ralph Moore  
 Morehead

**Complete Ambulance Service**  
**Oxygen Equipped**  
**"Equipped To Serve You"**

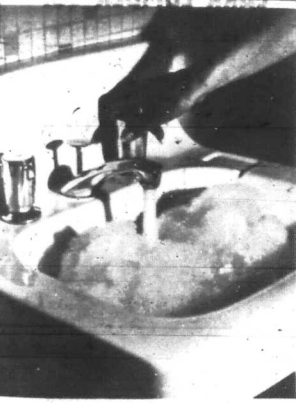
**Authorized To Service — Burial Insurance Contracts Issued By COMMONWEALTH LIFE INSURANCE CO.**

**LANE FUNERAL HOME**  
 Phone 784-4134 — Morehead, Ky.

**Moore's Drywall**  
 Ralph Moore  
 Morehead

**Complete Ambulance Service**  
**Oxygen Equipped**  
**"Equipped To Serve You"**

**Authorized To Service — Burial Insurance Contracts Issued By COMMONWEALTH LIFE INSURANCE CO.**



**The world's smallest pump handle**

Ever consider how much time and effort an old-fashioned water pump takes? Or, how much a modern electric water system would add to your family's comfort and happiness?

An electric water heater is relatively inexpensive to install. Most men can do the major portion of the work themselves. Yet it gives so much comfort and convenience to everyone! There's plenty of hot water to help Mother with the household chores; a refreshing shower or bath after a hot day's work; it even encourages the children to adopt better hygiene habits. You'll enjoy your modern water system even more this winter. No more water to carry (and spill) from outdoors. How wonderful to have a warm, indoor bath!

**ELECTRIC WATER HEATER**

Through August, September and October your Cooperative will pay \$25.00 upon proof of purchase of an electric water heater. See your local dealer about purchase and installation date.

**GRAYSON RURAL ELECTRIC COOPERATIVE CORPORATION**  
 GRAYSON, KENTUCKY

**Big lift to farm machinery**

Why tie a truck to luck? As winter nears, especially, every machine on your farm needs Standard's Protective Lubrication. Standard's all-purpose MP Grease protects moving parts from excess wear. Assures long, easy-running performance. Ask the Standard Man to suggest the care and lubricants to keep your equipment young!

**STANDARD OIL**  
 We take better care of your equipment

**E.C. DeHART, AGENT — MOREHEAD**



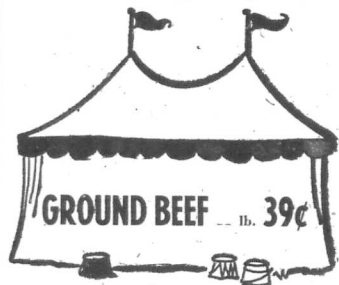


MIRACLE WHIP 39¢  
Qt. Jar

# side show favorites

TableRite - Blade Cut

**CHUCK ROAST** lb. **37¢**



- TABLERITE POT ROAST ..... lb. 49¢
- LEAN, BONELESS STEW MEAT ..... lb. 59¢
- BONELESS CHUCK ROAST ..... lb. 59¢
- TENDER, TASTY BEEF LIVER ..... lb. 39¢
- LEAN, MEATY SPARE RIBS ..... lb. 49¢
- TABLERITE THICK-SLICED BACON ..... 2 lb. box 99¢

Dole Chunks or **SLICED PINEAPPLE** No. 2 Can 3 for \$1

Dole **CRUSHED PINEAPPLE** No. 2 Can 3 for 89¢



**TIDE**  
5¢ Off Large Size

**2 for 49¢**

IGA Frozen **LEMONADE** 6 oz. Can 10¢

### Play Allen's \$1000.00 Cash Sweepstakes

\$100.00 GIVEN AWAY EACH WEEK FOR THE NEXT 10 WEEKS  
NOTHING TO BUY — JUST COME IN AND REGISTER  
Look For Your Name On the List of Winners Posted Each Monday  
At Allen's IGA

#### THIS WEEK'S WINNERS

- 525—CAROLE PIERCE
- Ward Oaks Dr., Morehead
- 515—CLYDE MAYS, R.R. No. 3,
- Morehead
- 516—NELSON PHILLIPS, 5th
- Street, Morehead
- 55—GOLDIE ELDRIDGE,
- Sandy Hook
- 55—LINDEN JONES, Clearfield
- 55—BENTON HOLBROOK,
- Elliottsville
- 55—DEBBIE WELLS, Salt Lick
- 55—LENZIE LEWIS, Elliotts-
- ville

#### WINNERS OF THE NEW KENNEDY HALF-DOLLARS

- Kenneth Orceire, Pat Caudill, Helen Calhoun, Allen Moore, Kath-
- leen Thornberry, Ruth Palfrey, Ruby Rigby, Paul Carter, Jean
- W. Bailey, Mrs. Owen Gray, Warren Plank, Lyda Marie Caudill, George
- H. Cline, Nancy Calvert, C. Lawton, R. A. Reynolds, Connie Criss-
- man, Reba Hinton, Willie Conn, Marla Gullett, Mrs. Morton Watson,
- Sue Hall, Ruth Lapping, Johnny Maxey, Jean Cooper, Tom Eldridge,
- Alex Conyer, Alta Terrell, Mrs. W. T. Layne, Goldie Cornette, Nor-
- ma Hogue, Margaret May, Alva Raveling, Esther Gullett, Bernett
- Blair, Ruth Bradley, Roszell Littleton, Elva Waddel, Joyce Rice,
- Marsha Charles, Michael Hayden, Calvin Wright, Mitchell McKenzie,
- Coleene Hampton, Harry Sparks, Era Max Smalley, Benny Caudill,
- Mrs. Jimmie Ruff, Marie Cook, Hester Harding

Winners Must Claim Prizes By Saturday

# GREATEST



# SHOW OF FOODS

HENDERSON'S

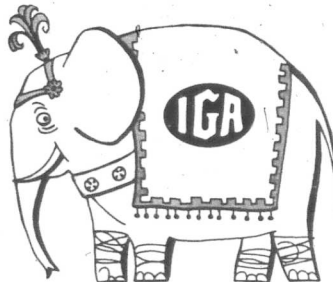
**SUGAR 99¢**  
10 lb. Bag

No Limit — Stock Up  
At This Low Price

Kraft **SALAD MUSTARD** ..... 6 oz. Jar 5¢

IGA Oven Fresh **BREAD** ..... 1 lb. Loaf 2 for 29¢

Martha White **MEAL** ..... 25 lb. Hot Rize 99¢



Kraft **VELVEETA** CHEESE SPREAD 1 lb. Box 39¢

Kraft Sliced **CHEESE** AMERICAN PIMENTO 8 oz. 3 for \$1

Kraft Marshmallow **CREME** ..... 7 oz. 19¢

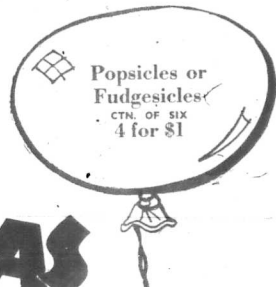
Kraft Miracle **MARGARINE** 3 for 89¢

Parkay **MARGARINE** 1 lb. Ctn. 4 for \$1

IGA Liquid **DETERGENT** QT. PLASTIC 55¢

Martha White **FLOUR** 10 - lb. Plain, Self-Rising 98¢

Recipe Pink **SALMON** 4 OZ. CAN 3 for \$1



Popsicles or  
Fudgesicles  
CTN. OF SIX  
4 for \$1

# BANANAS

Fresh!  
Ripe!



**10¢**  
lb.



# FOODLINER

8-6 Mon.-Thurs.  
8-8 Fri.-Sat.

Georgia **WATERMELONS** 25 LB. AVG. 69¢

California **PLUMS** 2 lbs. 49¢

Home Grown **CORN** Doz. 49¢

Half-Runner **GREEN BEANS** lb. 10¢