

LINE OF \$20 T
FEARING OR M
UTILIZING BOO
ON NEWSPAPER
PAPERS
OR PERIODICALS
WANTING TO B
PUBLIC BY MAIL
See Ky. 120
By Kentucky One Year \$3.50
By Kentucky One Year \$4.50
By Kentucky One Year \$5.00
Outside Kentucky, One Year \$4.00

4-H Record Books Due In By Monday

Members of 4-H Clubs in Rowan County this week were reminded that their record books should be completed and turned in to the County Extension office by Monday.

The records will be judged Tuesday.

Exhibition of 4-H projects at the Rowan County fair was also urged by Extension Service personnel. Each exhibit will receive a ribbon and a cash prize, they said.

A list of categories can be found in the fair catalog.

Effie Brown Succumbed Last Sunday

Mrs. Effie Brown of Clearfield, died Sunday in St. Clair Hospital, where she had been a patient for approximately a week. She was 64.

The widow of George Brown, she was a native of Rowan County. She was a daughter of the late Jim and Belle Wallace Link and was born Mar. 12, 1890.

Mrs. Brown was a member of the Church of God.

Surviving are three children: Russell Brown and Mrs. Loraine Crager and Ivan Brown, all of Clearfield; Mrs. Bertha Brown, Lexington; Lester Hazel Shelby, D. O.; and Hazel Jenkins.

Seven brothers and sisters also survive. They are: Mrs. Polly Walton, Mrs. Lela Wilton and Mrs. Nannie Christy, all of Morehead; Jesse Link, Clearfield; John Henry Link, Salt Lake; Mrs. Sarah Gregory and Mrs. Lizzie Markwell. Funeral services were held Tuesday at the Clearfield Tabernacle. Rev. Scott Grinstead officiated.

Police Issue Tickets For Stickler Violations

City police last Friday issued 8-10 citations to Morehead motorists for failure to have city motor vehicle stickers.

Pike Chief Callis Coyne said the routine check turned up "a few violators."

The 1964-65 licenses go on sale next month.

But How How There is a threshold below which no political party should go in selecting a candidate for the presidency, says Lodge.

There is a threshold below which no political party should go in selecting a candidate for the presidency, says Lodge. Lodge is the only Republican in the state to have been elected to the presidency. He is now a member of the Senate.

West Mignon Completed

NEW MOREHEAD STRUCTURE—West Mignon Hall, a five-story women's residence hall on the Morehead State College campus, was dedicated for the first time by delegates to the Kentucky Congress of Parents and Teachers Leadership Conference meeting on the campus. Two hundred women will be housed in 50 suites which include a study-living room, a bedroom and a private bath. The structure is the second of four residence halls to be built in the Mignon Hall Complex, named for Mignon Brown, wife of Morehead President Adron Doran.



Heart Attack Is Fatal To C. W. Meade

Charles W. Meade, whose real estate holdings may have been the largest of any individual in Rowan County, died shortly after being admitted to St. Clair Medical Center last Wednesday.

Meade, 77, apparently suffered a heart attack while moving the even at his home on Clear Fork. He lived only a short time after neighbors moved him to the hospital.

A retired employee of a Cincinnati manufacturing firm, Meade reportedly owned a some 1,600 acres in the Clear Fork section. Much of it is farm land, and some is in timber.

He normally spent his summers in Rowan County and the remainder of the year in Cincinnati, where he owned a number of apartment houses.

A native of Carter County, Meade is survived by his wife, Berta Lewis Meade, whom he married in 1936, and daughter, Carroll Jean Toelke.

Others survivors include a sister, Mrs. Nannie Cooper of Morehead, and three brothers: J. R. Meade and Steve Meade, all of Cincinnati; and Tom Meade, a veteran of World War I and a member of Methodist Church.

Funeral services were held Saturday at 2 p. m. in the Church Rev. John Thomas officiated.

Burial was in Sardis Cemetery under the care of Lane Funeral Home.

Palbearers were Harold Hogg, Leo Kramer, Cephus Shelton, Jerry Shaffer, Phillip Littleton and Dewey Kiefer.

Reservists To Train Next Month

Co. I, 400th Regiment, will start its annual two weeks of active duty training at Ft. Dix, N. J. it returns Aug. 29.

The 26 officers and 22 enlisted men who live in Morehead will participate in the training program—a refresher for many and a new experience for those who joined the unit since last August.

Members of Co. I, 400th Regiment will assume the duties of provoking basic training, newly enlisted soldiers at the training center.

Dr. Training Center, which is actually carrying the role they would play if called to active duty.

Capt. Billy G. Brannaman, commanding officer, reminds employed that members of the Army Reserve, under leaves of absence for military training purposes this summer.

The Universal Military Training and Service Act prohibits that employers require reservists to use regular training time for military training.

Capt. Brannaman said it also protects reservists' job rights, including seniority.

Brokers Agree

M'head Youth Signs With Pittsburgh

Leslie Stewart, star Morehead State College baseball pitcher for the past four years, has signed an \$8,000 contract with the Pittsburgh Pirates.

The big first baseman had been followed for four years by professional scouts and signed with Pittsburgh by the Pirates while hitting .290 as a freshman, .337 as a sophomore and .325 as a junior.

Last season, he set a new record in the OVC in home runs, 48 runs batted in and 44 hits.

Two Mishaps Reported By Police Here

A near head-on collision and a rear-end crash were investigated in Rowan County this week by Kentucky State Police.

The rear-end mishap took place Thursday afternoon near the intersection of U.S. 60 and Ky. 32-ent of Morehead.

Police reports indicate that a car driven by John Looney, 21, of Spencer, W. Va., struck a vehicle driven by Phillip Hardin, 16, of Morehead, after the Hardin auto had slowed to make a right turn.

The report indicates that Looney was following too closely.

A car driven by Billy

City Tax Structure Hit Blow When Court Orders Reduction in Assessment

The City of Morehead tax assessment committee has been ordered by the federal court to reduce its tax assessments.

The court ruled that the city's assessments were too high and that the city must reduce them by a certain percentage.

The city officials are now working to comply with the court's order.

MHC Offers 200 Supply Water To City Under Present Rates Until Municipal Plant Built

Occupancy Assignments Completed In Low Rent Housing Project Here

Morehead's Municipal Housing Commission has completed initial occupancy assignments for the 30 units of low rent housing at Ravard Heights, near the Morehead Graded and High Schools.

The Commission also announced at its meeting Monday that application will be made to the regional FHHA of face at Atlanta for 70 additional units to be located at a spot yet to be selected within the city limits.

The 30 tenants will probably occupy Ravard Heights by August 15 as final inspection is scheduled tomorrow. The project was scheduled for completion by June 10 but the contractor ran into materials and personnel problems resulting in a two-month delay.

Only one family applied for the 30 units (duplexes).

21 LEFT OUT

These had to be scaled down to 30 under formulas, and the surplus, suggested by the regional office. For example, veterans were given preference while a family's past conduct was a factor. Honesty, congeniality etc. were taken into consideration.

Monthly rents range from \$22 to around \$45. The average for initial occupants will be \$31.25. This includes heat, cooking and hot water fuel (natural gas) on Sunday Aug. 2, 1964. The Commission met for three hours Monday completing initial occupancy assignments after consulting other business members are: W. E. Crutcher, chairman; W. H. Beason, Jr., Allen, William H. Layne and Mayor Elliot Evans, ex officio.

Crutcher said, "Our people will be surprised at how low and modern these housing units are—few people have anything better in expensive homes.

Tenants must furnish their own apartments. The Commission's gas range and electric stoves are included and built-in cabinets. A maintenance man who will work on the project, was hired Monday.

Attorneys Are To Work Out Details Of Plan

Morehead State College offered Thursday to provide all possible water to Morehead at no increase in price until the City can construct its own plant by laying lines eight miles to Lacking River.

Developments at a meeting in the college administration building between Council and MSC policy personnel included—

A water shortage is probable, perhaps inevitable, as pumping, purification and storage facilities of the college owned body and the town (Ample impoundment is provided at Evans Reservoir with capacity of 17 million gallons, but the water problem, lies within the limitations of the pumping and purification facilities on Bridge Street.)

The college announced it would continue to sell water to the Utility Board for 21 cents a thousand gallons, but urged the city to expedite construction of its own plant.

The college can care for a student body up to 9,000 with its present facilities, but the supply is not enough for both MSC and the Utility Board. The City presently uses about twice as much water as the college, and consumption by both is expected to rapidly increase.

The city is proceeding with engineering plans to pipe water from the river. Estimated cost is \$1 1/2 million, and the entire city-owned system of water, gas and sewage disposal would be refinanced. This would bring the total indebtedness to about \$2 1/2 million as the Utility Board has \$750,000 in outstanding bonds. The city has applied to the U. S. government for a grant of part of the \$1 1/2 million, but has no assurance of approval.

An increase in rates to Morehead water consumers is inevitable, and the time element required by the City to build its own plant is problematical. Estimates of a one-to-five years for the city to build its own plant, at Monday's meeting.

Dr. Adron Doran, MSC President, said he felt the college would use frugality in its own water supply in the event of a shortage. No one disagreed that the danger of water rationing is approaching. The system has already been placed on a "provisional" instead of "excellent" rating by the State Department of Health because the present plant is over-stretched. Reservoir levels dropped alarmingly at two recent fires, according to figures presented at Monday's gathering.

Controversy Started Last November

Every person who expressed himself Monday agreed that a water shortage or rationing, would be detrimental to both the college and the city.

The controversy over Morehead's water supply started last November when the college announced about \$600,000 would be needed to expand its facilities to provide three times as much potable water. Regents said they would have to borrow the money, at four or three percent interest. The college said the bulk rate (at master meter) for the city would have to be raised from 21c a thousand gallons to 35c. This touched off a protest by the Utility Board and Council for Morehead's own plant.

Although Attorneys Hogg and Burns were instructed to proceed with the interim agreement, the city was apparently not in favor of it. When Doran said that the project would be extended over a longer period of years, we would be ready to consider a rate less than 15 cents."

Cost For City Plant \$1 1/2 Mil

He added that an interim contract, or re-negotiation, would have to be approved by the Regents "if our disturbed fear rumors and misrepresentations of our position."

Dr. Doran decided to spend the \$1 1/2 million for its own plant by a vote of four to three. One of the principal reasons was Bob Allen and George HNI voted for Morehead buying its plant, piping water from Lacking River, while Councilmen H. Hogg, W. H. Beason, Jr., and Austin Rydell were opposed.

Mayor Eldon T. Evans broke the deadlock by voting for the \$1 1/2 million facility.

This touched off the controversy that has caused more local discussion and disagreement than any action by Council in the city's 108 year.

Councilman Reynolds explored the possibility at Monday's meeting of the city purchasing the college's system. But, this was apparently ruled out because of the physical nature of the existing building on Bridge Street that houses the water plant, location, and the considerable investment the state has in Evans Branch Reservoir could probably not be met by the city.

Councilman Allen said, "I would be willing to consider the best thing for our people is to continue buying water from the college."

Although Monday's meeting was interspersed with some resentment and unnecessary unsubstantiated statements, all present were in agreement that the City and the college should work together for mutual understanding and cooperative progress.

Written Statement Prefaces Discussion

In opening the meeting Dr. Doran said that every member of the Board he believed had been contacted, but pointed to the misquotation or misinformation on the part of the college in this prepared statement.

I have asked you, as members of the Council and Plant Board representing the City of Morehead, Kentucky, to meet



—Turn To Page 6

—Turn To Page 6

—Turn To Page 6

—Turn To Page 6

THE PUBLISHER'S PEN

Campaign Jokes And Jibes Start Making The Rounds

This Presidential election year will bring campaign songs, jokes, jibes and some ill-fated puns among friends and neighbors.

Democrats and Republicans are agreed on two things—a record vote and the campaign will be bitter and hard fought.

If all the oratorical hot air of the next three months could be impounded scientists might have a bomb mightier than the atom.

Some restaurants have already listed a drink as "Goldwater." It's orange juice. Local Democrats were a little chagrined that Elijah M. Hoge, Morehead, was not named a delegate to the national convention at Atlantic City.

Republicans claim the State Administration snubbed A. B. Chandler at his 66th birthday.

Local Democrats were a little chagrined that Elijah M. Hoge, Morehead, was not named a delegate to the national convention at Atlantic City.

Local Democrats were a little chagrined that Elijah M. Hoge, Morehead, was not named a delegate to the national convention at Atlantic City.

dinner in Versailles Sunday and that Happy will support Goldwater. We have no comment from either side.

For one of the few times in history the Republican convention will probably be more interesting than the Democratic get-together.

The Democratic speaker, Lyndon B. Johnson by the Democrats is a formality, and LBJ is expected to pick his running mate without contradiction.

Our educated guess is that it will be Senator Humphrey. It won't be long before you'll be hearing the GOP poetry, e.g. "Goldwater in '64" with water in '65 and bread and butter in '66.

We'll pass on similar sayings (both sides) to you as the campaign develops. But don't write letters to the editor about this, or any political campaign. Some of the daily papers print such letters, but it is almost an axiom in the profession that they are omitted from weekly publications because of space limitations.

Another big one—As everyone knows, Stonewall Jack



More Than 'Laid By'

"CORNER THAN...—There is an old saying that corn should be "laid by" by this time. Planning was completed May 12, after which only two light rains fell until July 3, when there were two good rains.

is George J. Bays Branch. Obviously only a very slim mule could be used to plow in this corn now. Planting was completed May 12, after which only two light rains fell until July 3, when there were two good rains.

with his little finger. Actually, chiggers don't bite. They burrow into the pores of the skin and infection develops. We understand there's a new product in drug stores that will absolutely ward off chiggers. If this Publisher had a dollar for every chigger that has bored into our skin we'd be able to retire—that is, before taxes.

HEAVY LOAD—One of the highway dangers in these parts is rock falling from overhanging rock formations. Limestone roads and construction jobs but how can the state afford, or pay, for arresting violators since state highway trucks are the biggest culprits of all.

MEMORY—Folks in the eastern part of Rowan County must have forgotten we did sort of melancholy on reading that the L. P. Haldeman school building at Haldeman will be sold by the Board of Education, and probably razed. We think this was built in 1925 when Haldeman was a more thriving community than Morehead with 625 employees at the firebrick plant.

REPRINT—Speaking of chiggers, we are reminded of a "letter to the Editor" in the Rowan County News several years ago. We forgot the author but reprinted the essence not too long back in this column. The writer said that it would take a hundred million trillion chiggers to weigh a pound, a chigger could bite harder than any insect, or animal, based on weight, and if man had the same strength, he could tumble mountains.

thinking by benching Gordy Coleman in favor of Darrel Johnson, if Manager Hutson follows our advice and sends Bill Henry down to the minors the Reds just might make the world series.

ADVICE OLD—It's about time for Morehead subscribers to receive new telephone books. The last one is dated "September 1963." Morehead has about 2700 listed phones and is the largest business and toll center of General Telephone Company.

DO YOU KNOW—You probably can give Morehead's telephone area code—606. But do you know our ZIP number? We'd love it if you put don't know. The Post Office Department found out the public will stand for just so much registration and nonsense.

ADVICE—Mechanics: Morehead State College shouldn't announce athletic grants-in-aid as soon as they're signed. It's an open invitation for some college student to steal our potential.

REAL ISSUE—LBJ and Barry Goldwater continue to say the substance that the real issue in the Presidential campaign are foreign and domestic.

OPEN FORUM—This news item found out the public will stand for just so much registration and nonsense.

MATTER OF OPINION—We disagree with Sporting News and others who claim Little Leaguers are detrimental to organized baseball, particularly attendance.

GETTING UP STEAM—The Cincinnati Reds are making a run for the National League pennant. They might make it since two young relief pitchers, Ellis and McCool, who are producing with timely knocks, plus good defense and that damn manager has finally come around to our

New Library Region Open In Louisa

Kentucky's 13th library region is open for business with headquarters in Louisa. State Librarian Margaret Wallis reported today the name Big Sandy Library Region has been proposed, she said.

The surrounding counties of Martin, Carter, Elliott, and Boyd may be added to the region as they apply for it. Miss Wallis said.

Mrs. Pearl H. Greer, a former Louisa teacher who holds the bachelor's degree in library science from Peabody College under its five-year library science program, heads the new region as regional librarian.

Presently, the regional library is housed in the hardy place of the late chief justice of the U. S. Supreme Court.

Marines Needed
General Wallace Greene, Jr., commandant of the Marine Corps has indicated he will ask for an increase in the corps' present 190,000-man strength. Greene said more were needed in each squadron to maintain the new F4B Phantom jet fighter. The fighter also requires a crew of two men rather than the single crewman of earlier type planes.

JULY SPECIAL — 2 Dozen Chix Diapers for \$5.00

WE HAVE A COMPLETE LINE OF

Infant Wear and Supplies

- Receiving Blankets
- Diapers
- Training Pants
- Regular Diapers \$3.25 doz.
- Prefold Diapers \$3.75 doz.

Everything for the infant at the Lowest Prices in Town

CRADLE SHOPPE

(Located in Bay-Turner TV & Radio Repair Shop)

WEST MAIN STREET — MOREHEAD

— SAVE WITH STONE —

THE VOLUME MAKES THE DIFFERENCE!

Come to Stone for the Very Best Deal In a Late Model Car

THIS IS THE BEST SELECTION WE HAVE HAD TO OFFER FOR A LONG TIME

1964 Chevrolet Impala
4 door, automatic, V-8, radio, heater, power steering, load with extras, 7,700 actual miles. Cost over \$3,400.00. Now wholesale price
\$2,895.00

1962 Chevrolet Bel Air
2 door, V-8, automatic, radio, heater. Someone has really loved this little levelle. Like new throughout.
\$1,795.00

1961 Chevrolet Bel Air
2 door, 6 cylinder, automatic, radio, heater, runs out perfect. Want good gas mileage? Try this one at wholesale
\$1,195.00

1963 Comet Custom
2 door, 6 cylinder, standard shift, radio, heater. Like new in every way. Here it is a real gas saver.
\$1,795.00

1960 Chevrolet Impala
Standard shift, radio, heater. One of the sharpest 60 models anywhere. Better hurry.
\$1,395.00

1959 Chevrolet
2 door, V-8, automatic, radio, heater, air-conditioned. This little car rides and drives like a new one. A real "cool" buy.
\$995.00

1961 Plymouth Custom Wagon
4 door, V-8, automatic, radio, heater, power steering, power brakes, guaranteed one owner, driven only 28,000 miles. One of our better buys.
\$1,195.00

1962 Pontiac Tempest
4 door custom, automatic, radio, heater, all vinyl interior, guaranteed one owner. Was \$1,595.00, now
\$1,395.00

1960 Plymouth Valiant
4 door, 6 cylinder, standard shift, guaranteed one owner, 37,000 actual miles. Better hurry. Price to sell at
\$795.00

1959 Pontiac
4 door, V-8, automatic, radio, heater, 49,800 actual miles. Drives and looks like a new one. One of our better buys.
\$1,095.00

— SAVE WITH STONE —

MEMBER
G
GUARANTEED WARRANTY
USED CAR WARRANTY PLAN

"SAVE WITH STONE"

STONE PONTIAC-BUICK-GMC, INC.

Phone 784-9373

Used Cars U.S. 60 East — Morehead, Ky.

— SAVE WITH STONE —

SPECIAL

\$ave \$60.00

on Empire Heating Units and Metered Gas Installation!

EMPIRE FLOOR FURNACE
Here's a 70,000 BTU capacity floor furnace that's engineered for noiseless operation. You get an even flow of clean, healthful heat at a low operating cost. It's equipped with an extra heavy combustion chamber and convenient controls. Package price includes lifetime tank lease and complete installation of tank and furnace.
A regular \$365.95 value
NOW ONLY **\$279.95**

CIRCULATING HEATER
Modern in design with 70,000 BTU heating capacity! The powerful, 4-speed blower provides noiseless operation... distributes heat evenly. Equipped with automatic temperature control and lifetime combustion chamber. Package price includes lifetime tank lease and complete installation of tank and furnace.
A regular \$365.95 value
NOW ONLY **\$299.95**

ALL INSTALLATIONS FEATURE DOUBLE WALL "METALBESTOS" VENT PIPE
Convenient terms available... only 10% down, up to 18 months to pay!

For more information... Call or Visit Your Nearest Ashland Oil Metered Gas Bulk Plant Today!

ASHLAND OIL & REFINING COMPANY
U.S. 60 East — Box 21
Morehead, Kentucky
Phone: 784-5146

Ashland
METERED GAS

ENJOY

OUTDOOR LIVING

KILL LAWN INSECTS FAST WITH...

Arab

U-DO-IT

CONCENTRATE

Simple to apply

ASK OUR ARAB EXPERT FOR FACTS

CARR LUMBER CO.

W. Main Street — Morehead, Ky.

Post Summer Session Is Scheduled August 10-26

A post-summer school session will be held at Morehead State College August 10 to 26. Courses carrying two semester hours credit will end on August 21 and three semester hour credit courses will end August 26. All classes will be held in the new, air-conditioned Combs Classroom Building and rooms will be available at a rental cost of \$4.50 to \$5.50 per week. The college cafeteria will be open. Courses offered are: Art 121, public school art, 3 hours credit; commerce 364 personal finance, 2 hours, core course; 363, business law, 3 hours; dramatics 138, creative dramatics, 1 hour; education 410, workshop in modern teaching, 2 hours; English 201, rhetoric, 3 hours; English 202, writing and speaking, 3 hours; English 203, introduction to literature, 3 hours; English 202, introduction to literature, 3 hours; geography 100, fundamentals of geography, 3 hours; geography 241, United States and Canada, 3 hours; geography 300, regional geography, 3 hours; history 131, history of civilization, 3 hours; history 132, history of civilization, 3 hours; history 400, American foundations, 3 hours; history 444, Kentucky history, 3 hours; home economics 424, school health seminar, 1 hour; home economics 433, school

health seminar, 1 hour; mathematics 141, plane trigonometry, 3 hours; mathematics 152, core algebra, 3 hours; music 200, workshop for elementary teachers, 3 hours; philosophy 200, introduction to philosophy, 3 hours; physical education 412, coaching education, 1 hour; physical education 432C, fitness and dance instructor, 1 hour; recreation 101, community recreation, 3 hours; science 102, introduction to biological science, 3 hours; science 106, introduction to biological science, 3 hours; sociology 401G, criminology, 3 hours

Clearfield Sailor In North Atlantic

Ronald B. Smedley, U.S.N., son of Mr. and Mrs. James Smedley of Route 4, Morehead, is a crew member of the Navy nuclear powered cruise ship USS Laffa Rock on a Midshipman training cruise in the North Atlantic. During the training cruise Midshipmen are given the opportunity to see the Navy first hand. They receive instruction in gunnery, navigation, and shipboard routine. Laffa Rock will visit the World War II battle beaches of Normandy as well as Amsterdam, Portsmouth, England, the Netherlands and Paris, France, before returning to Norfolk, Va. in late July.

Bath Section Of I-64 To Be Bid Soon

The Kentucky Department of Highways expects to advertise for grade and drain construction on Interstate 64 in Bath and Montgomery counties during the first six months of this fiscal year. Highways Commissioner Henry Ward said today that plans are complete and right of way acquisition has begun on the 9.9 mile section from US 60 near Mt. Sterling to east of Owingsville. Ward said "that contract for this work will be let in sufficient time for work to begin next April." The first contract for grade and drain will be at an estimated cost of \$4,800,000 and the contract for paving will be awarded during the construction season following grade and drain work. Neither grade and drain nor paving can be done during the severe winter months, according to Ward. Meanwhile, the Department is pushing paving on other important stretches of Interstate highways in order to open them to traffic this fall. Paving of the joint stretch of Interstate 64 and Interstate 75 in Fayette County will be completed this fall. Location is under way also for Interstate 64 extending to Interstate 264 (The Watterson Expressway) in Louisville with an interchange in Fayette County. Interstate 64 is open to traffic from the US 60 connection in Franklin County to Jefferson County, a distance of 40 miles and a new six mile section extending to Interstate 264 (The Watterson Expressway) in Louisville will be open to traffic this fall. Paving is also being completed on Interstate 64 through Boyd County. The Department is also scheduled for early construction of a section of I-64 in Carter County. "This section can be substituted then for an inadequate section of US 60 between Olive Hill and Grayson," Ward said. This is in accordance with Department of Highways policy to construct sections of the interstate that will provide improved traffic service prior to completion of the entire interstate system in 1972.

Hey, Chigger Diggers! There's No Cure For Pests, But Here Are Relief Ideas

That perfect spoiler of picnics and woodsoomers, the chigger is here again. It has been annoying man since the first human man on the woods—and he's just as annoying now as he ever was. But says R. L. Miller, University of Kentucky agricultural Extension Service entomologist, he can be handled. The red-bug curse is one that has proper, effective, and precautionary. The chigger likes berms, ornamentals, woods, parks and golf courses—woodlands and golf courses—which means it covers any place man likes to go in the summer. As Miller says "you might as well be in jail as stay away from those places—and even in jail you might get them." It is commercially available repellent. Any drugstore can help you select a good one. "Four some on the hands, rub the repellent on the neck, arms and legs if not covered by clothing and around trousers and shirt tucks and cuffs. This treatment should last several hours." Second! After an outing, take a hot soapy bath. This may wash off the pest before he can start his attack (The main lesions and red spots are

caused by the chigger's injecting a fluid into your skin to dissolve the tissue upon which it feeds.) It has been found that To check an area for chiggers. Protect yourself first as described previously; then put a piece of black cardboard edge-wise on the ground. If chiggers are in the area, they soon will aggregate at the top of the card. Since they are red they can be easily against the black cardboard. It has been said the chigger is the worst man can experience. Miller offers this remedy for sufferers, a recipe which any drugstore can fill. Benzocaine 5 percent, menthyl salicylate 2 percent, salicylic acid 0.5 percent, ethyl alcohol 75 percent and water, 12.5 percent. Apply this mixture to each well with a piece of cotton if should give relief for about an hour. He says some persons that are carrying these old-fashioned sulfur before going into the woods and "wear by the efficiency of this preventive." "Others treat chigger bites with clear fingernail polish and presumably get good relief." And if anybody else has a good home remedy Miller says, he'd like to know about it.

Shop The Classified Ads

STUCKY FUNERAL HOME PHONE 784-4106 24-Hour Oxygen Equipped Ambulance Service LICENSED LADY ATTENDANT Member of Kentucky Funeral Directors Burial Association Authorized to Service Burial Contracts Issued by Commonwealth Life Insurance Co. - Owned and Operated By - M. M. (Red) Stucky - Betty Stucky

SUMMER SIZZLERS YOUR V STORE SHOE POLISH BONAZA CHOICE OF PASTE OR SELF POLISHING LIQUID BEST COLORS BEST COBERT 9 1/2 REG. 17c 22 OZ. PLASTIC BOWL SNAP ON LID Many Uses: Great for Salads Storage, Art, Colors. 9 BIG SAVINGS

S-T-R-E-T-C-H HEAD BAND 100% Helona Nylon One Size Fits All Hair Styles Ass't. Colors 9 OUR LOSS YOUR GAIN

METAL SPACE SAVING WASTE BASKET SLIM 20" TALL FITS CORNERS UNDER SINK MANY OTHER HANDY PLACES STurdy HEAVY METAL. BEST COLORS 99 BELOW OUR COST LIQUID PRELL \$1.00 Size 57 13 BIG 12 & 14 DISH CLOTHS 77 Reg. 1.00

BAKERS DOZEN DISH CLOTHS 77 13 BIG 12 & 14 DISH CLOTHS 77 Reg. 1.00 PLASTIC WARE RIOT UTILITY TUB DISH PAN WASTEBASKET LAUNDRY BASKET MIXING BOWL SET MANY OTHER YOUR CHOICE 10 qt. PAIL 47 VALUES TO 98c. KLEENEX POP-UP BOX 400 COUNT 23 BIG SAVINGS PIERCE'S Your Friendly 5c & 10c Store MAIN STREET MOREHEAD, KY.

FOR SALE Shangri-La Restaurant Grayson, Ky. Now doing thriving business with promise of much greater things as Grayson Reservoir work progresses and other construction work gets under way - Present owners have other interests. If interested call 474-6131, or write P.O. Box 371, Grayson, Kentucky.

State Establishes Firsts In Manpower Development Kentucky achieved two nationwide "firsts" and one second in manpower development during the fiscal year just ended. State Economic Security Commissioner George V. Powell reported this week. The classes which are popularly known as "job retraining" have been organized on a statewide basis by the Kentucky Department of Economic Security and are operated through the cooperation of the State Department of Education, Powell said. Here are the records: Kentucky established under the Manpower Development and Training Act (MDTA) for fiscal 1963-64. Highest percentage achievement in comparison with the amount of funds originally allocated - Kentucky's "quota" for MDA for the fiscal year. Biggest single training project in the country for fiscal year, the multi-occupational retraining program for 44 Kentucky Appalachians counties, which has received \$8.75 million in Federal funds. Second largest MDTA program in the nation in total dollar amount, with \$11,786,000 in Federal funds. "In addition," the commissioner said, "the record of placement—a vital step carried out by the State Employment Service—has been excellent. Actually," he said, "the placement record from the Eastern Mountain area is about 69 percent of those entering MDTA classes. That's the average as a whole 80 percent. The commissioner explained that the retraining program of the Appalachians counties has been placed in the State in first place early in the fiscal year and kept Kentucky ahead of more populous states as New York and California, both of which have active MDTA programs. Illinois, receiving slightly more than \$12 million in Federal funds, passed Kentucky only in the final month of the year. Powell said Kentucky exceeded its original MDTA quota by 600 percent, boosting its original quota to \$14 million to the final figure of \$11.8 million in established classes. The quota is assigned by the U. S. Department of Labor, which monitors the individual State effort and approves all State requests for establishing new courses. Kentucky was able to multiply its original quota to that full extent and create training courses for some 4,800 students because of having carefully prepared proposals approved by the U. S. Labor Department, pending the availability of other Federal funds. "When other states failed to take advantage of their quotas for MDTA," Powell explained, "Kentucky's approved proposals were ready to take effect and fill the gap." This was not the first time Kentucky has taken advantage of its opportunities to multiply its original quota. Powell said in fiscal 1962-63 the year immediately before the fiscal year just ended, the Commonwealth almost tripled the amount of money originally allotted, multiplying it by 270 percent. Some 3,100 persons were in training at the beginning of the

General Fund Shows Excess \$6 Million The State's General Fund will show a \$6.3 million surplus for the fiscal year ending June 30, according to official estimates. Revenue Commissioner James E. Lockett and Finance Commissioner L. Felix Joyner said the surplus will be determined when final bills for fiscal 1963-64 are paid Sept. 30. In a report to Gov. Edward T. Breathitt, the commissioners said the surplus June 30 was \$5.8 million, expected to rise to the higher figure when unspent agency appropriations lapse.

State Cholera Plan Undergoes Postponement Kentucky will delay the start of its cholera quarantine and vaccination regulation until the Federal program is effective, the State Board of Agriculture has decided. "We will continue to operate our bog cholera control program under the present regulation," State Agriculture Commissioner Wendell H. Butler said in announcing the delay. He is chairman of the State Board. We had planned to start the new regulation July 1. Vaccination of all breeding and feeding swine would have been required on the farm 21 days prior to movement to or from any assembly point," Butler said. Dr. R. J. Henshaw acting State veterinarian, pointed out that Kentucky already has a bog cholera control program. The new Federal regulation would strengthen it by requiring vaccination prior to interstate movement for breeding and feeding bogs.

THIS SUMMER HIT THE ROAD CURT'S AUTO FAIR AND BARGAIN BARN In A Good Car From Curt's Auto Air And Bargain Barn May, we thank you all for the terrific business that we have enjoyed these last 30 days. We still have about 30 good cars left—everything from a Cadillac to a Corvair. Our sale is still going on, with prices as hot as a Cowboy's Pistol. Come up and look around. Then, we dare you to make up an offer. See and talk with your old Bargain Barn Buddy, Curt Hutchinson, at U.S. 60 EAST — MOREHEAD, KY.

It's easy to keep him in hot water ... with an electric water heater. Married to a bath tub babe? The kind that likes to enjoy the minutes after a few casual hours in the tub? Then you need hot water—from a flameless, fast-recovery electric water heater. And never worry. Nothing to turn on or off. That's why we say there's no match for electric water heating—no flameless. So see your dealer. Let him show you how to keep your whole family in hot water—the clean, safe electric way. CO FIRST CLASS ELECTRICALLY CLEAN COOKING FAST HEATING PUREST BURNING HEATING LIGHT FOR LIVING KENTUCKY UTILITIES COMPANY an investor owned electric company

Tobacco Prospects Good Although Rain Needed

Tobacco prospects in the county look very favorable although there has been a need for rain in most sections for the past few weeks. Some folks are running into trouble with diseases and I had one specimen brought in this morning suffering from sun scald. Let me insist that if you see anything in your field that you don't recognize from the disease standpoint, please make it a point to let us know so that we can help you recognize it. In many cases early recognition of a disease will enable you to prevent its spreading.

Plant Beds
If you have not worked up your plant bed for next year.



TRADE IN YOUR CHAIN SAW FOR A MIGHTY NEW McCULLOCH

And do that cutting job faster and easier—Extra high allowance right now—Easy weekly terms—save money!

Monarch Supply Store
Morehead Ky.

Schryver Remodeling

- PAINTING
- ROOFING
- REMODELING
- FENCING
- CARPENTRY
- REPAIRING
- LANDSCAPING
- SIDEWALKS

No Job Too Small — FREE Estimates
Guaranteed Work — Reasonable Rates
W. D. SCHRYVER PH. 784-4921

Ranger's Column

Middleton Was Valued For His Aid

By Joe J. Mack

"We of the Forest Service lost a close friend and fellow conservationist in the passing of Mrs. Middleton of Middletown, Ky., last Saturday at the age of 59. Mr. Middleton, of Ors, as we know him best, spent most of his adult life as a farmer and a sawmill operator. He started buying timber on National Forest timber sales when we first started sales here on the Cumberland land in the late thirties and, continuing purchasing and operating timber sales for several years.

"There is an old saying 'A friend when in need is a friend indeed.' During the long drought in the fall of 1952 forest fires were so numerous that smoke from forest fires had filled the valleys of this area so full of smoke that headlights were used on motor vehicles in mid-day. Forest service fire crews were spread so thin that we were called on every available source of man power and equipment to combat the going fires. We called on Ors for help. He shut down his sawmill and sent all of his employees and equipment to work helping us fight fires. Not only did he help out during that emergency but he continued as an active National Forest Fire Warden doing his utmost in preventing and controlling forest fires until ill health forced him to become inactive on fire suppression work, at which he was made an Honorary Warden.

"As an Honorary Warden he continued to attend our fire prevention and training meetings. With gratitude we of the Forest Service extend our sympathy to Mrs. Middleton and her family.

Equipment operator Pete Vickers is on the district with the forest service road grader. This here be graded all of the Forest Service maintained roads in Rowan, Bath and Menifee Counties.

Field Day
The annual Park and Home Day will be held on the farm of H. M. Meadows which is operated by Elmer Kieck on the Cranston Road, five miles from Morehead. Visitors will have a chance to see tobacco demonstrations, beef cattle operation, and there will be a program for the ladies. The program starts at 10 a.m. Friday, July 31.

Book Exhibit Opened At Breck Wednesday

A book exhibit now in progress at the Breckinridge Training School gymnasium contains a sampling from many publishers' 1963 collections. The exhibit opened Wednesday and runs through next Wednesday July 29th. It will be open from 8 a.m. through 3 p.m. during this time.

The books are not for purchasing at the exhibit, but general display.

TOO HARSH
"Moderate painting is the 'dooding of idiots.'" — Sir Charles Wheeler, president of a Royal Academy in London. He must have been mistaken. Idiots are said to have better sense than to go in for moderate painting.

Claig Sprout . . . And His Friend, TIMOTHY TUGMUTON . . . Sez

DEAR MISTER EDITOR:

I see by the papers where Congressmen Olsen of Montana is trying to get a investigation about all this paper work that goes on amongst the departments of the Government.

He give out some figures that ought to stagger all the people of this country. For instance, he showed where Government paper work cost the taxpayers \$4 billion last year. Every department in the Government has to make out from 3 to 6 forms of everything that is writ in Washington, from a letter to a request for office pencils. It was now getting to the place he said, where the storage space for these forms and paper work was taking up so much space as they was using to store surplus wheat. Furthermore, he reported, the cost for storing this junk was running about neck and neck with the cost of storing wheat.

He told the Congress there was 500,000 Federal employees that didn't do nothing but collect, compile and store this paper-work. He claimed the paper work disease was being forced on all kinds of private enterprise, from the country store to the large corporation.

For instance, he presented a suit from Montgomery Ward & Company showing they had to file \$400,000 forms with the Government last year and it cost the company a quarter of a million dollars to handle it.

We was talking about these matters at the country store Saturday night and the fellow that runs the store reported his brain had done give way just from keeping books and forms for the state and Federal departments. He talked about this was the main reason he was planning to put in the supermarket plan where the customers could wait on themselves. He claimed he didn't have time to serve his customers and he has paper work at the same time.

Ed Doodie reported the fellow that runs the feed and seed store had to quit selling tobacco on account of this Government forms. He said a fellow couldn't sell tobacco without stopping first in a

while to split and he claimed he was getting behind with his springing time.

Clem Webster reminded the fellow July was here once again and it was time for the annual rising of the debt limit ceremonies in the Congress. Clem said he was ready in the papers where there was going to have to take it to \$200 billion this time. Of course, reported Clem this was just temporary. This never raise the limit of the permanent limit was set at \$275 billion 10 year ago and five billion ever year. Clem said he saw in the papers where we didn't go but \$10 billion in the red this year. He figured this was temporary and we would get to \$12 billion next year.

Years truly,
Claig Sprout and
Timothy Tugmutton

Over Plowing Tobacco Can Retard It

Over-cultivating burley tobacco can do more harm than good, says J. H. Smiley, University of Kentucky Agricultural Extension Service specialist.

"In the later stages of growth, cultivation could do more harm than good since the root systems have become so large and since the root pruning is more damaging to the crop than any benefit from continued cultivation," he says.

Normally he says, about three cultivations are sufficient for producing excellent tobacco crops. Cultivation should stop when plants are about knee-high.

At this stage Smiley points out, roots to plants exceed beyond the shape of the leaves.

Continued cultivation, he says, later low shallow weeding cut off the growing roots near the surface. This would slow down growth seriously. And any cultural practice that slows growth will reduce quality.

Burley's Economic Impact To Be Features Of Fairs

Two Kentucky fairs—the Blue Grass at Lexington and the Germantown Fair of Bracken, Mason and Robertson counties—will give special emphasis on burley tobacco, its economic impact and its history in activities scheduled in late July and early August to observe the 100th year since the discovery of white burley.

The 10-year-old Germantown Fair, "Old Reliable," has adopted the theme, the "Centennial Year of Burley," for its entire run, August 4 through August 8, while the Blue Grass Fair has slated Friday, July 31, as "Burley Continental Day" at the Blue Grass State Fair.

Germantown, site of the tri-county fair in Northern Kentucky, is in Bracken County. O. farmer obtained the seed which produced the first white burley tobacco plants discovered in 1864 near Englewood, O., just across the Ohio River. Today's burley producing industry traces its actual beginning to that first discovery a century ago.

A highlight of the Germantown Fair will be a pageant depicting historical incidents in the tobacco industry, including the first discovery of white burley, the type grown to day.

The pageant, produced by Mrs. Sanford Parker Jr. of Mays Lick, will be staged by residents of the tri-county area at the fair Aug. 4.

Both fairs also are scheduled to have contests to name Tobacco Princess to compete for the Kentucky Tobacco Crown title at the Kentucky State Fair.

Special stress at the two fairs also have been set to double various exhibits relating to the tobacco industry and the numerous phases of it, including manufacturing.

EUROPEAN GIVE AID
The Europeans, after receiving more than \$45,000,000 in aid from the United States are now paying back loans and giving out more in aid to the rest of the world than they now receive from the United States. European repayments on loans amounted to \$6,400,000,000 in the period checked from 1946 through 1963.

GOOD LOOKER

That's you, if you've discovered the quick and easy way to find anything you need by looking in the yellow pages . . . where YOUR FINGERS DO THE WALKING.



You Can Swing A Loan!

It's easy at our bank. Whether you need money for a car, home improvements, or a summer vacation, we can help you easier, quicker, and at less.

Come in and see!

FIRST FEDERAL Savings And Loan Association Of Morehead

MAIN STREET MOREHEAD, KY.

— OPEN SIX DAYS A WEEK —

REFRIGERATORS

Two-door refrigerator-freezer . . . automatic defrosting in refrigerator section . . . zero-degree freezer . . . 12 cu. ft. net volume

Model TB-313Y with trade **\$228.00**

RANGES

Four high-speed, easy-to-clean Calrod® cook units . . . no-drip cool-top oven

Model J-417Y with trade **\$179.95**

FREEZERS

Large, 12-cubic foot storage in either chest type or upright models

Only **\$188.00**

CA-222Y CB-232Y

GE Clearance

Guy Needs Room, So He Is Slashing The Prices On All GE Products

Televisions
Stereos
Freezers
Refrigerators
Washers & Dryers
Ranges

ALL PYREX and MIRRO-WARE 1/2 Price

We are clearing our stock on these items

WASHERS

Completely automatic . . . big capacity . . . two wash temperatures . . . powerful spray rinse . . . spiral activator . . . safety lid switch . . . porcelain tub and basket

Only **\$169.95** with trade

Model WA-530Y

DRYERS

Big 12-pound clothes capacity . . . high-speed drying system . . . variable time control . . . safety start switch . . . fluff cycle

Only **\$129.95**

Model DA-516Y

TELEVISION

Big 11" screen . . . light enough to take everywhere . . . lifetime circuit board guarantee . . . unitized chassis . . . built-in antenna

Only **\$99.95**

Model M-110Y VHF UHF/VHF slightly higher

TELEVISIONS—	Reg.	Sale Price
16" PORTABLE	\$139.95	\$119.95
19" PORTABLE	\$159.95	\$129.95
19" Table & UHF	\$169.95	\$139.95
23" CONSOLE	\$389.95	\$329.95
23" CONSOLE	\$369.95	\$329.95
23" CONSOLE	\$379.95	\$349.95
23" CONSOLE (Walnut)	\$299.95	\$189.95
23" CONSOLE (Maple)	\$259.95	\$209.95
23" CONSOLE (Mahogany)	\$249.95	\$199.95
Combination - Sight & Sound (Maple)	Was \$549.95	Sale Price \$449.95
STEREOS—	Reg.	Sale Price
PORTABLE-TRIMLINE 100	\$ 89.95	\$ 74.95
PORTABLE-TRIMLINE 200	\$ 99.95	\$ 84.95
PORTABLE-MONAUROL	\$ 59.95	\$ 49.95
CONSOLE-AM&FM	\$289.95	\$209.95

FREEZERS—	Reg.	Sale Price
23 cu. ft. Chest	\$529.50	\$389.95
18 cu. ft. Upright	\$349.95	\$309.95
12 cu. ft. Chest	\$229.95	\$194.95
REFRIGERATORS—	Reg.	Sale Price
Model TC324-14" Roll-Out Freezer-Refrigerator	\$329.95	\$269.95
14" 2 DOOR FROST GUARD	\$359.95	\$299.95
14" COMBINATION FREEZER	\$329.95	\$269.95
14" 2 DOOR FREEZER-REFRIGERATOR	\$279.95	\$239.95
14" REFRIGERATOR	\$249.95	\$219.95
10" REFRIGERATOR	\$219.95	\$189.95

RANGES—	Reg.	Sale Price
AMERICANA	\$549.95	\$449.95
30" ELECTRIC	\$329.95	\$279.95
40" GAS CALORIC	\$249.95	\$209.95
40" ELECTRIC	\$279.95	\$239.95
40" ELECTRIC	\$259.95	\$209.95
WASHERS AND DRYERS—	Reg.	Sale Price
WASHER MODEL 650	\$229.95	\$189.95
DRYER MODEL 620	\$169.95	\$139.95
WASHER MODEL 950	\$269.95	\$219.95
DRYER MODEL 920	\$219.95	\$179.95
WASHER MODEL 850	\$259.95	\$199.95

Robertson's Goodyear Store

213 Main Street Guy Robertson, Owner Phone 784-5096

SOCIETY

MR. BROWN OBSERVES 4th BIRTHDAY

Mr. Nick Brown observed his ninety-fourth birthday July 12 with members of his family and friends gathered at the home of Mr. and Mrs. Charles Tackett to help him celebrate.

Those present were: Mr. and Mrs. Bud Cross, Richmond, Ind.; Mrs. Willie Hardy and son, Oakland; Miss Donna Kay of Alabama; Mr. and Mrs. Bill Boyd, Mr. and Mrs. Sam Little, Jr. and daughter, Mr. and Mrs. Sam Jones, Mr. and Mrs. Sherman Brown, Miss Sylvia Brown, Willie Brown, Ed Brown, Mr. and Mrs. Virgil Brown and daughter, Mrs. Douglas Phillips and family, Mr. and Mrs. Oliver Reynolds, Mr. and Mrs. Bill Brown and family, Mr. and Mrs. Joe Curtis, Mr. and Mrs. Russell Reynolds, Mrs. Cora Dickman, Mr. and Mrs. Bobbie Tackett and son, and Mr. and Mrs. Charles Riggs and family.

ARNETT VISITS RELATIVES HERE

Mr. and Mrs. Rowell W. Arnett have returned to their home in Alexandria, Va., on a two-week vacation, part of which was spent visiting with relatives in Morehead. While here they visited Mr. Arnett's mother, Mrs. Emma

ARNETT'S VISIT

Arnett, his sisters, Mrs. Henry Brown and Mrs. Russell Lewis and daughters; and Mrs. Arnett's uncle, R. G. Mask and Mrs. Mask.

JONES-LIVINGOOD ENGAGEMENT ANNOUNCED

Mr. and Mrs. John Sanford Jones, RFD, 1, Morehead, announce the engagement of their daughter, Patricia Livingood, to Mr. Fred Livingood, son of Mrs. Lida Sheels, also of RFD 1, and the late Mr. Livingood. The wedding will be Saturday afternoon, August 1, at 4:30 o'clock in the First Baptist Church of Morehead. Open church will be observed.

CHURCH OF CHRIST HAS REGULAR MEETING

The regular meeting of the Missionary Society of the Church of Christ was held recently in the home of Alexander Arnett with thirteen members attending.

GIVES LUNCHEON FOR GRANDDAUGHTER

Mrs. Naomi Chappoy entertained Saturday at Harrison Terrace in Mayville with luncheon for her granddaughter, Diane Chappoy of Memphis, Tenn. Guests included Diane Duncan, Mary Reynolds, Nancy Patrick, Candie Williams, Karen Cline, Ann Reynolds and Mrs. Montgomery.

FOURTH CHILD BORN TO MR. AND MRS. SVEC

Mr. and Mrs. William Svec Jr. are welcoming their fourth child, a son born July 14 at the Chase Medical Center. The baby weighed six pounds, four ounces and has been named Andrew Todd. He has a sister, two brothers.

MANY ATTEND BLUESTONE CAMP

Over one hundred campers enrolled in the Child Evangelism Fellowship Camp which closed Saturday were several from Morehead.

ATTEND TOURNAMENT AT PARIS GOLF CLUB

Several from Morehead were among those participating in the invitational golf tournament Friday to Sunday at Stoner Creek Country Club, Paris.

TEA-SHOWER HONORS MISS MARY F. MARSH

Tea-shower honoring Miss Mary Frances Marsh, bride-elect, was given Saturday afternoon at the home of Mrs. Margaret M. Stucky, Pleasantburg Road. Mrs. Stucky, Mrs. Wathan Guller, Mrs. Henry Glover, Mrs. Eugene White, Mrs. Dobbins Day and Mrs. Karl Fisher were hostesses for the event.

COMING SOON

"Country Music On Broadway"
"Mail Order Bride"
"Mondo Cane"

HOMEMAKERS HAVE SUPPER AT FARMERS

Members of the Farmers Homemakers Club met July 10 at the home of Mrs. Ernie Lowe for a potluck supper and business session.

HOMEMAKERS MEET AT SHEETS HOME

The Morehead Night Homemakers Club met Monday afternoon at the home of Mrs. Lida Sheels for a potluck supper. The lesson on making trays was presented by Mrs. Clara Stewart.

Mr. and Mrs. Owen Skene and daughter, Karen Jo and Mr. and Mrs. James Skene and daughter, Rhonda, have returned from a week's visit with Mrs. Skene's sister and family, L. L. Mrs. Fred Gene Robinson and children of Charleston, S. C.

Mr. and Mrs. W. T. Garey were among those attending a birthday celebration honoring Carl Jones Sunday at the home of Mr. and Mrs. W. T. Garey.

Mr. and Mrs. Carl Claesson are directors of the camp located near Blue Stone.

Mr. and Mrs. Carl Claesson are directors of the camp located near Blue Stone.

Mr. and Mrs. Carl Claesson are directors of the camp located near Blue Stone.

Mr. and Mrs. Carl Claesson are directors of the camp located near Blue Stone.



Mr. and Mrs. Donald Wayne White

Morehead-White Nuptial Rites Solemnized Recently

In a candlelight ceremony solemnized June 1 in the Cranston Church of God, Miss Brenda Morehouse became the bride of Donald Wayne White. Rev. John C. Thornberry, minister of the church, officiated.

A program of wedding music presented by Mrs. Taylor Livingston and Miss Kay Martin who sang "The Lord's Prayer" and "I Love You Truly."

Given in marriage by her uncle, Ivan Deborn of Morehead, the bride wore a gown of white crystal mesh and a sash fashioned with a bell skirt. The bodice of imported Chantilly lace featured a scalloped sweetheart neckline outlined with seed pearls and long tapered sleeves. A queen's crown of seed pearls held her veil.

Mr. and Mrs. Robert Laughlin and son, Jim Bob spent the weekend in Paris, Mr. and Mrs. William Canan and Mrs. Clayton Skages and son, Clay of Lexington visited Sunday with their parents, Mr. and Mrs. Bert Skages and W. E. Crutcher.

Mr. and Mrs. Robert Laughlin and son, Jim Bob spent the weekend in Paris, Mr. and Mrs. William Canan and Mrs. Clayton Skages and son, Clay of Lexington visited Sunday with their parents, Mr. and Mrs. Bert Skages and W. E. Crutcher.

Mr. and Mrs. James A. Davis of Grayson spent Saturday and Sunday with their parents, Mr. and Mrs. Walter Calvert.

Mr. and Mrs. Alvin Martin Jr. and children, Janet and Freddie of Beers visited last weekend with their parents, Mr. and Mrs. Alvin Martin.

Mr. and Mrs. Lawrence Stewart were in Ashland for the weekend.

Mr. and Mrs. Lawrence Stewart were in Ashland for the weekend.

Mr. and Mrs. Lawrence Stewart were in Ashland for the weekend.

Mr. and Mrs. Lawrence Stewart were in Ashland for the weekend.

Mr. and Mrs. Lawrence Stewart were in Ashland for the weekend.

Mr. and Mrs. Lawrence Stewart were in Ashland for the weekend.

Foundation Program Lived Within Income

Again last fiscal year, the Minimum Foundation Program for Kentucky schools lived within its budget—with \$106,091 in surplus.

Dr. Harry M. Sparks, State Superintendent of public instruction, praised "the accuracy of the preliminary struggle estimates of the Division of Finance and the Department of Finance's Budget Division."

The estimate called for \$114,327,479 in fiscal 1964. Only \$111,622,786 was spent, Dr. Sparks said.

Minimum Foundation funds are figured on a formula including teacher salaries according to rank, the state—based capitation at \$900 per classroom unit, current expenses at \$900 per classroom unit; and capital transportation costs on the basis of population density, mileage and types of roads.

Mr. and Mrs. Lawrence Stewart were in Ashland for the weekend.

Mr. and Mrs. Lawrence Stewart were in Ashland for the weekend.

Mr. and Mrs. Lawrence Stewart were in Ashland for the weekend.

Mr. and Mrs. Lawrence Stewart were in Ashland for the weekend.

Mr. and Mrs. Lawrence Stewart were in Ashland for the weekend.

THE CHURCH OF CHRIST

MEETS AT
225 Second Street
MOREHEAD, KENTUCKY
DON FLATT, Minister

SUNDAY SCHOOL	10:00 A.M.
SUNDAY WORSHIP	10:30 A.M.
SUNDAY EVENINGS	4:30 P.M.
WEDNESDAY EVENINGS	7:00 P.M.

LEXINGTON LIONS

BLUE GRASS FAIR

LEXINGTON TROTTING TRACK
July 27 - Aug. 1

2 - GRANDSTAND FEATRES - 2
RETROFF ALL GIRL AUTO THRILL SPECTACULAR
MONDAY - TUESDAY - WEDNESDAY

Collier's World Champion Rodeo
Thursday, Friday, Saturday

DOLLAR DAYS

at MARTIN'S

One Group Ladies' ANKLETS 10¢ Slightly Soiled

20 WASH CLOTHS \$1.00

Only 5 Men's SUITS Values \$39.00 to \$49.00 — Each \$5.00

1 Group Men's Cotton DRESS PANTS BROKEN SIZES 25¢ pair

1 GROUP LADIES' COATS AND SUITS By BETTY ROSE Values From \$39.00 to \$49.00 \$2.00 to \$15.00

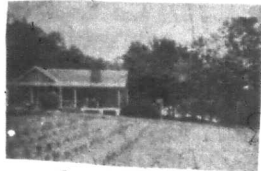
80 Square PRINT 4 yds. \$1.00

We are winding up our sale of all our stock of Summer Merchandise. Everything Must GO.

Main Street Morehead, Ky.

BUILDING LOTS **HOMES ESTATES** **REAL ESTATE** **FARMS AUCTIONS** **COMMERCIAL**

MAIN STREET PROPERTY **HOMES FOR SALE** **F-A-R-M-S**



Conveniently Located

Here is a nice one which you have asked about. It's something different—Near Albe Lincoln's birth place, but one of our nicest and most convenient homes. Has 3 bedrooms, special living-dining room-kitchen arrangement, fireplace, paneling, porches, on a large lot and well landscaped. Just 1/2 mile from the Fieldhouse.



Near Schools

New 3 bedroom brick with carpet attached, central heat, ceramic tile in bath, built-in kitchen cabinets, near new High School, on a good big lot 90' x 110'. Priced to sell and ready for occupancy.



Thomas Addition

6 room frame home located on a 50' x 132' lot in the Thomas Addition and is near the new school and hospital and has city utilities. Rugs, curtains, and shades go with this house for only \$5,900.00.



2 1/4 Acres

This farm is located on a school and mail route and is just a few minutes drive from Morehead. Buildings include a 6 room, 2 1/2 story frame home with 3 bedrooms, 2 halls, 2 porches, and 6 closets. There is also a 4 room frame dwelling, 2 cellars, garage and a big barn. Tobacco base is .49 acre, about 25 acres crop land and 3 water wells. Take a look at this one before you buy.



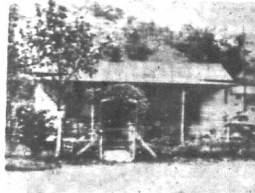
Close To Everything

One story frame with plenty of parking space, garage on back lot. Why not combine your business and home? Within walking distance of the business district, churches and Morehead State College. Special financing available. Look this one over.



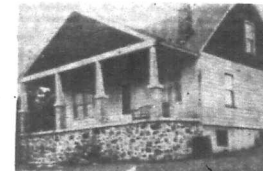
Ready To Occupy

This 3 bedroom brick located on Flemingsburg Road is newly decorated, has storm windows and doors, plenty of closet and storage space, nice fire place, lots of paneling, is well landscaped and ready for immediate occupancy.



A Good Buy

Five-room frame home located on 1 1/2 acre lot, approximately 7 miles from Morehead. Hardwood floors, water in the house, New electric automatic water pump. Pretty trees and flowers and has a good garden plot. Almost 200 ft. frontage on US 44. Price \$5,500.



150 Acres

Located 9 miles from Morehead on a school bus and mail route, this farm has a nice 6 room and bath 2 story home with basement and 2 porches. Has 3 wells and a good pond, 41 acre tobacco base, 40 acres in grass. A good stock farm in the right location. Priced at \$10,000.00.



The Right Location

Why not use your G.I. Benefits for this Main Street property? Large home on a corner lot. Priced for a quick sale.



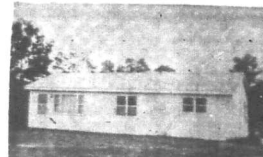
Near Church And School

This almost new home has 5 rooms, bath, basement and is located on a 2 acre plot just 8 miles from town and 1/2 mile from school and churches. The house is modern with hardwood floors, forced-air heat, nice birch cabinets with built-in oven and range, cozy living room with fireplace, 4 closets and carpet. This is an ideal home for a family who desires privacy and enjoys a beautiful view.



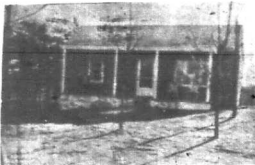
Three Bedroom Home

Located in Swift Addition on a nice 130' x 150' lot, this 5-room and bath frame home has 2 porches, 3 closets, three bedrooms and hardwood floors and is priced to fit the income of the average family as well as the size of the family. Price \$10,500.00.



135 Acres

Located in the Sharkey neighborhood on a black-top road with school bus and mail route, this farm has a nice 6 room and bath new frame home with birch kitchen cabinets, electric built-in range and oven, paneling in kitchen, den; sheet rock interior, hardwood floors, storm windows and doors, and five closets. About 30 acres of this land is timberland. 5 tobacco base and has a good pond.



New Four Room House

This new frame home is located on a nice 1 1/2 acre lot about 8 miles from Morehead on a good road with school bus and mail route. It has a large garden and will make an ideal home for a retired couple. This property is perfect for a summer camp or retreat. Only \$4,000.



155 Acres

Located about 8 miles from town on a year-round gravel road with school bus and mail route, this large farm has a 5 room frame home with a good cellar, 3 barns, 155 acres tobacco base, 60 acres grassland and around 70 acres of timberland. Also included is a garden, good orchard, a nice lawn and 2 ponds.



Plenty Of Room

Just off Main Street on a large lot, this 2 story frame home is in good condition and has plenty of elbow room. May be used for a home and business combined. An extra home and garden are located on the back of this huge lot. Priced for a quick sale at \$11,000.



On Large Lot

Three bedrooms, frame with birch kitchen cabinets, hardwood floors, all utilities, located on a nice high-valling, large lot with garage included. Priced \$9,500.00.

F-A-R-M-S



10 Acre Baby Farm

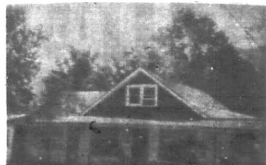
This small farm has a new 8-room modern frame home, is located on a blacktop road and on a mail and school bus route. It has 4 bedrooms, a bath, large living room-dining room combination, closets and a full size basement which contains a garage and plenty of storage space. It is well insulated and has forced air heat and storm doors and all copper plumbing. This property has much to offer in the way of combining a job with town and country living. It must be seen to be appreciated. It will qualify for almost any kind of a loan. Priced at \$15,000.



One Acre Of Land

This 6 room and bath frame home located on an acre of ground on school bus and mail route, only a few minutes from Morehead, has solid foundation, plywood floors, gingle roof, sheet rocked inside and has shingled exterior. There's lots of windows with awnings, good deep well enclosed in an insulated pump house, wash house and garage. In fact, this is a good place to live. Priced at only \$5,500.00.

COMMERCIAL PROPERTY



COMMERCIAL PROPERTY

Combination home and well stocked general store. Store has nice frame home with a good cellar, 3 barns, 155 acres tobacco base, 60 acres grassland and around 70 acres of timberland. Also included is a garden, good orchard, a nice lawn and 2 ponds. Plenty of storage space. If you are interested in a small business, take a look at this one.



90 Acre Farm

Located about 8 miles from town, this farm has 60 acres in crop land, all in grass. It has a 3-room frame home, two ponds, 1.25 acres tobacco base and a good tobacco barn. One-fourth mile on blacktop road and plenty of good building lots make this a real good buy.

REALTOR
PHONE 784-5750

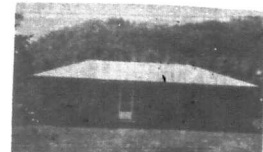
BROKER

GLADYS M. LACY, Salesman
Apprentice Auctioneer

AUCTIONEER
MOREHEAD, KY.

H. H. LACY

100 ACRES NEAR SHARKEY
This nice rolling farm has 60 acres of good grass, is well watered and fenced. There's no buildings but plenty of building sites, a good farm with a little timber
See Us For Building Lots Or Any Of Your Real Estate Needs Before You
BUILD - BUY - OR BORROW



Just 3 Miles Out

25 acre farm located on a blacktop road with school bus and mail route, has a 5 room and bath frame mch-type home with exterior shingled, including shingled roof. There is a good well and some timberland. Best of all, there's good neighbors.



5 Acres Of Land

1 1/2 story frame home has 6 rooms, 4 bedrooms, living room and kitchen, 2 porches, 4 closets and garage. The interior is dry-crow and brick posts. There's hot and cold water in the house, plenty of shrubs, flowers and landscaping. On a black top road and in a good neighborhood, this property is just about 15 minutes from Morehead. Priced at \$6,000.00.

Let Us Show You Our Complete Listings At Your Convenience

Physical Fitness Council Is Named, Former UK Cager Chosen By Governor

Gov. Edward T. Breathitt has established a Governor's Council on Physical Fitness with former All-American basketball player Frank Ramsey of Madisonville as its chairmen.

Purpose of the council, Breathitt said, will be to protect and improve the physical fitness of Kentuckians. Some of Kentucky's best known athletes and coaches were named to the 17-member council. Included are former baseball great Pee Wee Reese of Louisville University and Kentucky football coach Charlie Bradshaw of Lexington. Western State College basketball coach Johnny Oldham, Bowling Green, Kentucky's amateur golf champion Johnny Owen, Lexington, and Kentucky State College basketball coach John B. McLendon, Frankfort.

TERMITES?

call **Terminix**

Ramsay's amateur basketball career, preceding his long stay with the Celtics, also was replete with honors. He was a member of the Madisonville High School team and was named to the All-Kentucky high school team.

Others named to the council by Breathitt were Don Kias of Eastern State College, and Mayfield High School foot ball coach Virgil Raines, Mayfield. Charlie Vetter, Louisville, head of the Jefferson County recreation department, Miss Mary DeBow, Hopkinsville, and Mrs. Nancy Goodin, Harrodsburg. Dr. Owen B. Murphy, Lexington, and Mrs. Ernest Smith, Harlan.

\$5000 GUARANTEE

Against Future Termite Damage

For Further Information Call

Rowan Real Estate Transfers

(July 7, July 21)

Davis Kidd Jr. and Patricia Kidd to Herman Mabry and Desha Kidd, land in Rose-Master Talmadge James and Marjorie M. Mearns to Robert M. Hall and Georgia A. Hall, Morehead, Lots Nos. 26 and 27 of Caskey subdivision, July 7.

CARR LUMBER CO.

Phone 784-5433

All Work Done by Terminus Co. Lexington, Ky.

Willie C. Hogge, Route 2, Morehead, to Thurley Adkins, Morehead, land on East Fork and land on North Fork, July 7.

FROM RUSSIA WITH LOVE

SEAN CONNERY as JAMES BOND DANIELA BIANCHI in "THE UNDISCOVERED COUNTRY"

Delbert Lewis and Dora Lewis to Nelson Jennings and Christine Jennings, land near Clearfield, July 11.

Starting Sunday

It's Funny, It's Sensational!

IF YOU WANT TO KNOW THE TRUTH SEE THIS SHOCKER ABOUT...

CHILD BRIDES OF THE OZARKS "SHOTGUN WEDDING"

ADULTS ONLY

SHE WANTED A QUIET WEDDING... SO PAW PUT A SILENCER ON HIS SHOTGUN!

COMPANION FEATURE! "Slave Empress"

Bertha Richardson, Clearfield, to Clifford Richardson and Lottie Richardson, Clearfield, land in Rowan County, July 14.

St. Claire Hospital

784-4161

Admissions

July 15 - Mrs. Robert Armstrong, Farmers; Geneva Reed, Morehead; Charlene Meade, Cincinnati; Charles Carroll, Olive Hill.

Gasoline Tax Refunds Top \$2 Million

By Tevis Bennett

Again in 1963 as in 1962, Kentucky farmers filing claims for the federal and state gasoline tax refund were rewarded in cash in the amount of over \$2 million according to figures released by the Kentucky Department of Revenue in Frankfort and the Internal Revenue Service in Louisville.

Dismissals

July 15 - Vernon Kennedy, Homer Reed, Tina Frank; Mary Jane McCoy; Mrs. Johnny Cox and daughter.

State Gets Federal Aid To Extend Fire Program

Kentucky has received an \$18,000 federal grant to extend a three-month pilot program of forest fire defense training in rural areas through Jan. 31, 1965.

Marriage Licenses Issued

Odel Delp Jr., 27, Route 2, Morehead; and Bennie Mae Stacy, 17, Route 2, Morehead, July 14.

MOBILE HOMES! PARK

TRAILER SALES Rental - Parking Morehead Camp Motel

Phone 784-4759 U. S. 60 East

State Eyes Longer Span For Parks

Spinitzloff Research, Lexington, is making a survey to determine whether the present tourist season could be lengthened profitably at most of the 34 State parks and shrines.

CIVIL RIGHTS LAW

President Johnson signed the civil rights bill into the law three hours after Congress approved it on July 2. The ceremony took place in the East Room of the White House, where the President pledged himself to "heighten execution" of the statute and announced immediate steps to insure its enforcement.

Attend Your Southern States ANNUAL MEETING

7:30 P.M. (EST) Friday, July 31, 1964

AT ROWAN COUNTY HIGH SCHOOL Fish Supper - By Meal Ticket Only

Rowan Farmers' Supply Morehead

Name Head Of State Mine Unit

Natural Resources J. O. Matlock has appointed Elmore C. Grim as director of the Division of Strip Mining and Reclamation.

State Eyes Longer Span For Parks

Participating officials, on the basis of increased attendance so far this year, have predicted total attendance for 1964 will reach 13 million or more.

MOBILE HOMES! PARK

Odell Delp Jr., 27, Route 2, Morehead; and Bennie Mae Stacy, 17, Route 2, Morehead, July 14.

MOBILE HOMES! PARK

TRAILER SALES Rental - Parking Morehead Camp Motel

Phone 784-4759 U. S. 60 East



ONE THING that won't prove fickle, is a Savings account at Citizens. You can depend on your regular rate of interest. Your principal, too, is insured to \$10,000. Open your Savings Account now, and build security and peace of mind.

Citizens BANK

MOREHEAD, KENTUCKY MEMBER F.D.I.C. "GROW WITH US"

Attend Your Southern States ANNUAL MEETING

7:30 P.M. (EST) Friday, July 31, 1964

AT ROWAN COUNTY HIGH SCHOOL Fish Supper - By Meal Ticket Only

Rowan Farmers' Supply Morehead

MOBILE HOMES! PARK

TRAILER SALES Rental - Parking Morehead Camp Motel

Phone 784-4759 U. S. 60 East

Attorneys Are

(Continued from page one.)
me and other representatives of Morehead State College consider a position paper which I prepared for the Board of Regents on the water situation. Present, also, are representatives of the press and radio in addition to legal counsel for the City and the College.

Recites Thinking Of Regent Members
The Morehead College President then banded the Mayor and Council members, the following statement of intent and policy concerning the position of the Board of Regents—

ELEGANCE IN MOBILE HOME LIVING



1964 Model 'CONSORT' Mobile Home
43 New Coaches in Stock for you to pick from.

Why Pay Rent? Buy Now and Pay in Small Monthly Rent Payments.
Terms To Suit You. Use Our Finance Plan. Buy Now And Pay Over A Year When You Sell Your Car.

REPORT OF CONDITION OF Peoples Bank Of Morehead

ASSETS
Cash, balances with other banks, and cash items in process of collection
United States Government obligations
1,987,000.00
Obbligations of States and political subdivisions
2,768,927.60
Loans and discounts (No overdrafts)
1,813,781.78
Bank premises (Net), furniture and fixtures
12,424.34
TOTAL ASSETS \$5,655,928.94

LIABILITIES
Demand deposits of individuals, partnerships, and corporations
\$2,371,189.75
Time and savings deposits of individuals, partnerships, and corporations
2,131,169.33
Deposits of United States Government (Including postal savings)
8,133.78
Deposits of States and political subdivisions
970,438.08
TOTAL DEPOSITS \$5,280,928.94

CAPITAL ACCOUNTS
Capital, Common stock, total par value \$100,000.
No. of shares 1,000
100,000.00
Surplus
175,000.00
TOTAL CAPITAL ACCOUNTS \$75,000.00

MEMORANDA
Assets pledged or assigned to secure liabilities and for other purposes (including notes and bills redemptions and securities sold with agreement to repurchase)
644,000.00

I, C. P. Caudill, president of the above-named bank, do solemnly swear that this report of condition is true and correct, to the best of my knowledge and belief.

Correct—Alfred C. P. Caudill
Roy C. Caudill
H. H. Lacy—Directors

WHEREAS Morehead State College issued 20-year water improvement bonds in 1950 in the amount of \$200,000, and WHEREAS the principal and interest on these bonds were paid by the sale of water improvement bonds of 1950 was \$127,247.50 for the period of January 1, 1953, to December 31, 1963.

WHEREAS the City pays the College at the rate of 20 cents per gallon for the use of water delivered under the May 31, 1950, contract, and WHEREAS the City pays the College at the rate of 20 cents per gallon for the use of water delivered under a contract dated July 17, 1952, and

WHEREAS the City of Morehead purchases water filtered and treated by the College under a contract signed May 31, 1950, and WHEREAS the City of Morehead purchases water filtered and treated by the College under a contract signed May 31, 1950, and

WHEREAS the City of Morehead purchases water filtered and treated by the College under a contract signed May 31, 1950, and WHEREAS the City of Morehead purchases water filtered and treated by the College under a contract signed May 31, 1950, and



GETS SCHOLARSHIP—Linda Wilson, daughter of Mr. and Mrs. Oliver Wilson of Morehead, has been awarded an academic scholarship at Morehead State College for the 1964-65 school year. She is a graduate of Rowan County High School.

for construction of water plant and distribution lines, he revoked and rescinded all his orders and that the City proceed to negotiate a contract with Morehead State College for the purchase of water from the College at rate of 35¢ per one thousand gallon under long term contract with such College.

WHEREAS the water plant has operated at near maximum much of the time since October, 1963, and WHEREAS the State Department of Health has given provisional approval of the water plant operation on May 27, 1964, because of the small margin between the capacity of the plant and the actual output of the plant, and

WHEREAS the City water rate ratios to the consumer are

Cooperative Sets Annual Meeting Here

Election of Advisory Board, Farm Home Advisory Committee members and operations reports highlighted the Southern States Cooperative annual membership meeting for the Morehead area July 31, at 7:30 p.m. The meeting will be held at Rowan County High School.

Local operations and service discussed by William Garey manager of Rowan County High School.

College reserves the right to limit the amount of water provided to the City in case providing water to the City at such time or times that a shortage occurs.

Two Mishaps

Wages 29, of Salt Lick, apparently was on the wrong side of the highway and hit the front side of a vehicle operated by James Arthur Edwards, 35, of Morehead, Rt. 4 Saturday, police reports show.

City Tax

(1) The City of Morehead agrees to proceed with the construction of a water processing plant as rapidly as possible, and (2) the College agrees to continue providing water to the City at 21 cents per 1,000 gallons insofar as the present capacity of the College plant will permit.

an Farmers' Supply. Boarding Hillslope Morehead, a young farmer will discuss the role of "Young Farmers and Their Future in Agriculture."

Nominations for the local Southern States Advisory Board (the Morehead) area, are: Ben Lewis, Charles Earl Kiser, Leo B. Littleton, and W. M. Perkins, all of Morehead; Billy Haney, Smiley, and Frank W. Lewis, Smiley.

Local operations and service discussed by William Garey manager of Rowan County High School.

Farmers Put Waterways On Lands

By Donald B. Nelson Elmer Kistick of Sharkey, P. M. Meadows and S. H. Littleton, Jr. of Morehead, Bill Williams of Bluestone, and Laville Johnson of Farmers have constructed waterways on their farms recently.

Field Track Meet Slated On Saturday

A countrywide track and field meet sponsored by the Morehead & Rowan County Recreation association, is scheduled for Saturday evening at the Morehead State College stadium.

Asian Group Visits Here

A three-member tour of delegation from the Chinese National

The following committee chairman will assist with the local meeting—Mrs. Freeman Attendance, Mrs. Mrs. Freeman Chadwell, Foods, Mrs. Lloyd Harris, Decorating, Mrs. Ben Patton, Greeting, Leiland Hall, Ribbons, Mrs. Gordon Lewis, Entertainment, Mrs. Ray Martin.

GOING ANYWHERE IN THE WORLD?

On Vacation or Business Trip USE TRAVELERS CHECKS! For safety and convenience they're hard to beat! Available here at our bank... in both small and large denominations... at minimum cost.

PEOPLES BANK OF MOREHEAD

SHOP THE CLASSIFIED ADS

ist island of Formosa (Taiwan) (owned, turkey-producing areas in Kentucky and Tennessee during a visit to United States leaf areas

Complete Ambulance Service Oxygen Equipped "Equipped To Serve You" Member of Kentucky Funeral Directors' Burial Association

LANE FUNERAL HOME

Phone 784-4134 — Morehead, Ky.

Advertisement for Peoples Bank of Morehead featuring a globe and text about travelers checks and protecting funds.

SHOP IN MOREHEAD, KENTUCKY FOR BIG DIVIDENDS!

5 - BIG DRAWINGS - 5 Each Saturday Afternoon at 3:30 P.M. On The Courthouse Lawn. You Must Be Present To Win

RETAIL MERCHANTS ASSOCIATION OF MOREHEAD

First Prize - \$50.00 Trade Coupon Second Prize - \$25.00 Trade Coupon Third Prize - \$15.00 Trade Coupon Fourth Prize - \$10.00 Trade Coupon Fifth Prize - \$ 5.00 Trade Coupon

Get Your Tickets at the Following Stores:

- Goldie's Department Store, Pierce 5c & 10c Store, Humley's Shoe Center, Layne's, Morehead Home & Auto, Vi's Jewelry, Martindale Furniture, The Big Store Furniture, Idolbelle's Bootery, Ray's Saweyay, Stone Pontiac, Buick, GMC, Inc., Burn's Department Store, Jim's Haberdash, Stanley's Store, Martin's Department Store, Monarch Supply Store, Pelphrey's Department Store, The Big Store, Clayton's Men Store, Robertson Goodyear Store, Fraley's Electric, C & H Dollar Store, Style Shoppe

MORE PEOPLE THAN EVER ARE SHOPPING AT IGA!



SEMI - BONELESS
HAMS
lb. **57¢**

- Fresh Lean **PORK STEAKS** lb. **39¢**
- Boneless Rolled **PORK ROAST** lb. **49¢**
- Fresh **PORK LIVER** lb. **19¢**
- Mickleberry **SAUSAGE** 2 - lb. roll **59¢**

Whole Or Half

Center Slices lb. 89¢

FROZEN FOODS

- ROYAL GUEST **FRENCH FRIES**, 9 oz. **10¢**
- IGA **WAFFLES** 5 oz. **10¢**
- IGA **STRAWBERRIES**, 10 oz. **2/49¢**

\$1000 - FREE - \$1000

\$100 will be won by people in this community each week for the next 10 weeks — Nothing to buy — Just come in and register each week — Drawing will be held in our store every Monday morning and the winners announced on the radio and newspaper.

\$25.00 FIRST PRIZE
\$15.00 SECOND PRIZE
\$10.00 THIRD PRIZE
5 PRIZES OF \$5.00 EACH

AND 50 ADDITIONAL WINNERS EACH WEEK OF THE NEW KENNEDY HALF DOLLARS

COME IN AND REGISTER TODAY

When it comes to added savings at IGA, we are sure you will find this week's "Ten Penny Sale" a real "eye opener." As an example of some of the many values, check the items in this ad. Here are only a few of the many products you will find throughout our store this week that will help "stretch" your food dollar. Shop today at IGA... where friendliness, quality and savings can be yours... every day!



LOOK WHAT 10¢ WILL BUY!

- American Beauty CORN** 300 can **10¢**
 - Mixed Vegetables
 - Peas & Carrots
 - Tomato Juice
- Nancy Lee GREENS** 300 Can **10¢**
 - Turnip
 - Kale
 - Mustard
- Comstock Sliced BEETS** 303 Can **10¢**
- Good 'N Rich CAKE MIXES** 8 Oz. **10¢**
- Hunt's TOMATO PASTE** 6 Oz. **10¢**
- Hunt's TOMATO SAUCE** 8 Oz. **10¢**
- Hunt's APRICOTS** 8 Oz. **10¢**
- Hunt's PEACHES** 8 Oz. Can **10¢**
- Easy Monday LIQUID STARCH** Qt. **10¢**
- Strietmann COOKIES** 3 for **\$1**
 - Sugar
 - Oatmeal
 - Coconut
- Carnation DRY MILK** 20 Qt. **\$1.39**

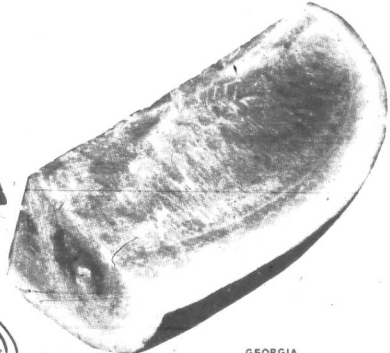
Muchmore - Golden Solid
Margarine 1 lb. Ctn. **10¢**

Red - Ripe Georgia

IGA Book **MATCHES**
Pkg. of 50 **10¢**

- Hunt's Calif. **TOMATOES** 300 Can **10¢**
- Royal - All Flavors **GELATINS** 2¢ off 6 oz. size **10¢**
- Shoveboat **PORK & BEANS** 1 1/2 oz. Can **10¢**

Watermelon
Average 25 lb. **59¢**



TableRite Evap. **Milk** Tall Cans **10¢**

Allen's IGA FOODLINER

8-6 Mon.-Thurs.
8-8 Fri.-Sat.

GEORGIA **CANTALOUPE**
EXTRA LARGE
3 For 69¢

IGA **BUNS**
Hamburger - Hot Dog
8 Pack **19¢**

- Crisco **SALAD OIL** 24 oz. Bot. **33¢**
- IGA Buttermilk **PANCAKE MIX** 2 lb. Pkg. **29¢**
- Royal Gold **ICE CREAM** 1/2 Gal. Ctn. **69¢**

- HOME GROWN **CABBAGE** lb. 5¢
- ELBERTA **PEACHES** 3 lb. bskt. 49¢
- THOMPSON SEEDLESS **GRAPES** 2 lbs. 49¢
- WHITE HALF RUNNER **GREEN BEANS** 2 lbs. 29¢