

91A23-1-14-2

# THE TEACHERS COLLEGE SLANT MOREHEAD STATE TEACHERS COLLEGE

MOREHEAD, KENTUCKY



*Summer  
of  
1938*

Published quarterly by the Morehead State Teachers College,  
Morehead, Kentucky

Entered as second-class matter, April 3, 1931, under the Act of  
August 24, 1912.

Volume 9

MAY, 1938

Number 2

JOHNSON CAMDEN LIBRARY  
MOREHEAD STATE UNIVERSITY  
MOREHEAD, KENTUCKY

THE  
TEACHERS COLLEGE SLANT  
  
MOREHEAD  
STATE TEACHERS  
COLLEGE

MOREHEAD, KENTUCKY



MEMBER

Southern Association of Colleges and Secondary Schools  
American Association of Teachers Colleges  
Kentucky Association of Colleges



*Schedule of  
Recitations*

SUMMER OF 1938

MAY, 1938

JOHNSON CAMDEN LIBRARY  
MOREHEAD STATE UNIVERSITY  
MOREHEAD, KENTUCKY



## CALENDAR

### FIRST SUMMER TERM

June 13	Monday	Registration for first summer term
June 13	Monday	Entrance examinations
June 14	Tuesday	Class work begins
June 14	Tuesday	Fee of \$1.00 per day charged for late entrance
June 15	Wednesday	Last day to register for full load
June 16	Thursday	Fee charged for change of schedule
June 19	Saturday	Last day to register for credit
June 19	Saturday	Students whose credits are not on file will be dropped
July 4	Monday	Holiday
July 15	Friday	Examinations
July 15	Friday	First summer term closes

### SECOND SUMMER TERM

July 18	Monday	Registration for second summer term
July 18	Monday	Entrance examinations
July 19	Tuesday	Class work begins
July 19	Tuesday	Fee charged for late entrance (\$1.00 daily)
July 20	Wednesday	Last day to register for full load
July 20	Wednesday	Fee charged for change of schedule
July 23	Saturday	Last day to register for credit
July 23	Saturday	Students whose credits are not on file will be dropped
Aug. 19	Friday	Commencement
Aug. 19	Friday	Second summer term closes

### FALL SEMESTER

Sept. 16, 17, 18	Freshman Orientation Days
Sept. 19	First semester opens



A CAMPUS VIEW SHOWING THE HILLS IN THE BACKGROUND



## FACULTY

HARVEY ARTHUR BABE, B. S., A. M.	<i>President</i>
B. S., University of Kentucky, 1911	
A. M., University of Kentucky, 1934	
WILLIAM HUTCHINSON VAUGHAN, A. B., A. M., Ph. D.	<i>Dean</i>
A. B., Georgetown College, 1923	
A. M., George Peabody College, 1927	
Ph. D., George Peabody College, 1937	
EMMA O. BACH, A. M., Ph. D.	<i>French and German</i>
Sekundarlehrerpatent, University of Berne, 1909	
A. M., University of Nebraska, 1913	
Ph. D., The Johns Hopkins University, 1930	
GABRIEL CONKLYN BANKS, A. B., B. D., A. M.	<i>English</i>
A. B., Transylvania College, 1917	
B. D., College of the Bible, 1921	
A. M., Yale University, 1924	
JAMES GILBERT BLACK, B. S., M. S., Ph. D.	<i>Mathematics and Physics</i>
B. S., University of Kentucky, 1921	
M. S., University of Kentucky, 1922	
Ph. D., University of Michigan, 1928	
MARY HELEN BOARD, A. B., A. M.	<i>Training School</i>
A. B., Western State Teachers College, 1927	
A. M., George Peabody College, 1932	
WILLIAM EMMETT BRADLEY, A. B., A. M.	<i>English</i>
A. B., University of Kentucky, 1925	
A. M., University of Kentucky, 1926	
CATHERINE L. BRAUN, B. S.	<i>Geography</i>
B. S., George Peabody College, 1926	
KATHERINE DUVALL CARR, A. B., A. M.	<i>Biology</i>
A. B., University of Kentucky, 1931	
A. M., University of Kentucky, 1932	
LUCILE CATLETT, A. B., A. M.	<i>Training School</i>
A. B., Goucher College, 1927	
A. M., University of Southern California, 1933	
CLAIRE LOUISE CAUDILL, B. S., A. M.	<i>Physical Education</i>
B. S., Ohio State University, 1934	
A. M., Columbia University, 1936	
NAOMI CLAYPOOL, A. B., A. M.	<i>Art</i>
A. B., University of Kentucky, 1930	
A. M., Teachers College, Columbia University, 1932	
KEITH P. DAVIS, B. S., A. M.	<i>Music</i>
B. S., New York University, 1933	
A. M., Teachers College, Columbia University, 1934	
LORENE SPARKS DAY, A. B., A. M.	<i>Training School</i>
A. B., Kentucky Wesleyan College, 1929	
A. M., Teachers College, Columbia University, 1933	
SAM J. DENNEY, A. B., A. M.	<i>Training School</i>
A. B., University of Kentucky, 1928	
A. M., University of Kentucky, 1932	

- G. D. DOWNING, LL. B. .... *Physical Education*  
LL. B., University of Kentucky, 1920
- LINUS A. FAIR, A. B., A. M. .... *Mathematics and Physics*  
A. B., Arkansas State Teachers College, 1925  
A. M., George Peabody College, 1930
- JAMES DAVID FALLS, A. B., B. S., A. M., Ph. D. .... *Education*  
A. B., Ogden College, 1920  
B. S., George Peabody College, 1922  
A. M., George Peabody College, 1923  
Ph. D., George Peabody College, 1926
- NEVILLE FINGEL, A. B., A. M. .... *Economics*  
A. B., University of Kentucky, 1921  
A. M., University of Kentucky, 1932
- MARGARET KATHARINE FINDLEY, A. B., A. M. .... *Training School*  
A. B., Wooster College, 1922  
A. M., University of Pittsburgh, 1931  
A. M., Columbia University, 1934
- MARVIN E. GEORGE, B. S., A. M. .... *Music*  
B. S., State College, Bowling Green, Ohio, 1930  
A. M., Teachers College, Columbia University, 1931
- HENRY CLAY HAGGAN, B. S., M. S. in Agriculture .... *Agriculture*  
B. S. in Agriculture, University of Kentucky, 1918  
M. S. in Agriculture, University of Kentucky, 1934
- MYRTIS W. HALL, B. S., A. M. .... *Home Economics*  
B. S., George Peabody College, 1925  
A. M., George Peabody College, 1930
- \*ERNEST HOGGE, B. S., M. S. .... *Chemistry*  
B. S., Morehead State Teachers College, 1931  
M. S., University of Kentucky, 1934
- REX LIVINGSTON HOKE, A. B., A. M., Ph. D. .... *Education*  
A. B., University of West Virginia, 1922  
A. M., University of Chicago, 1926  
Ph. D., University of Cincinnati, 1928
- JAMES B. HOLTZCLAW, A. B., A. M., Ph. D. .... *History and Government*  
A. B., University of Kentucky, 1928  
A. M., University of Kentucky, 1931  
Ph. D., University of Kentucky, 1933
- \*LEWIS HENRY HORTON, A. B. .... *Music*  
A. B., Oberlin College, 1923
- INEZ FAITH HUMPHREY, A. B., A. M. .... *English*  
A. B., Eureka College, 1910  
A. M., University of Chicago, 1927
- WARD B. JACKSON, A. B., A. M. .... *English*  
A. B., University of Kentucky, 1928  
A. M., University of Kentucky, 1932
- RIENZI WILSON JENNINGS, B. S., A. M. .... *Commerce*  
B. S., University of Iowa, 1927  
A. M., University of Kentucky, 1928
- ELLIS TUCK JOHNSON, A. B., A. M. .... *Physical Education*  
A. B., University of Kentucky, 1932  
A. M., University of Kentucky, 1937
- ROMIE D. JUDD, A. B., A. M., Ph. D. .... *Education*  
A. B., Georgetown College, 1916  
A. M., University of Chicago, 1929  
Ph. D., George Peabody College, 1936



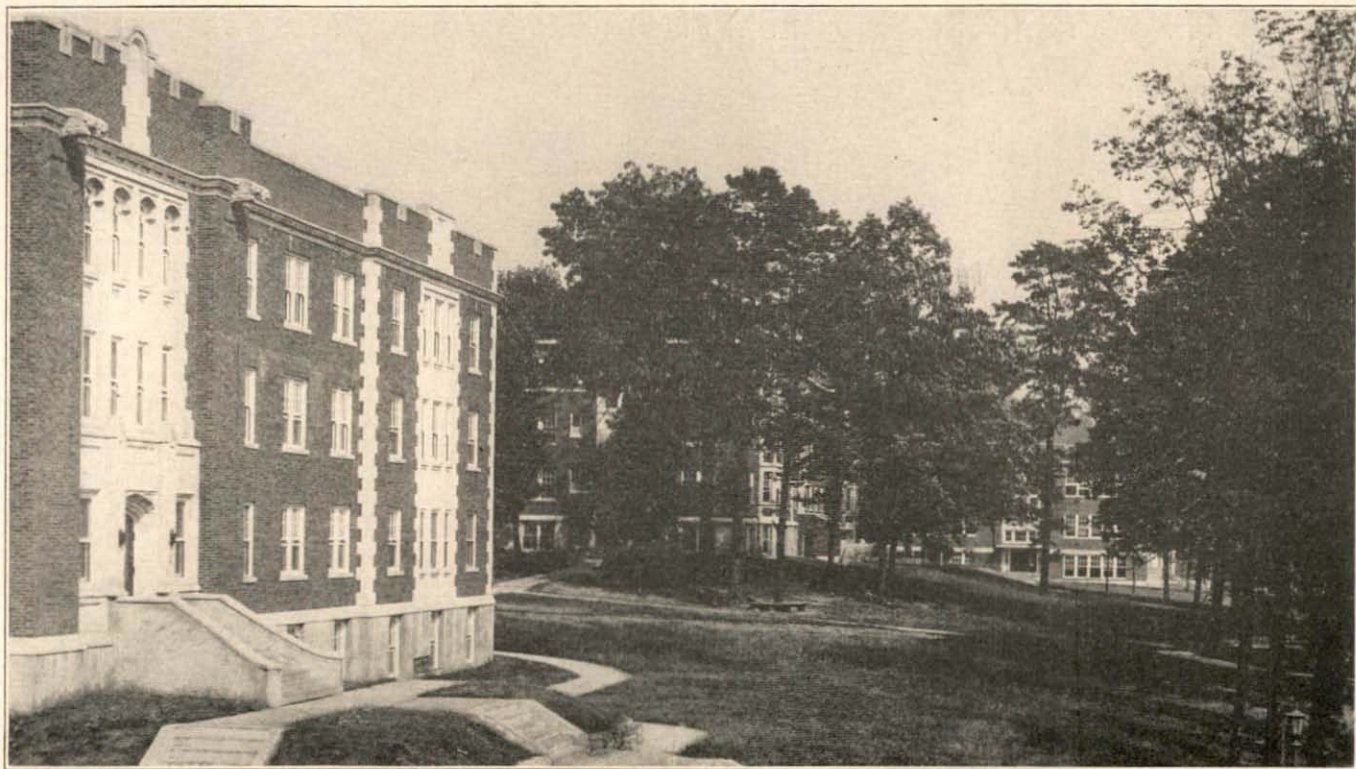
WARREN C. LAPPIN, A. B., A. M.	<i>Training School</i>
A. B., Transylvania College, 1920	
A. M., University of Chicago, 1929	
ROBERT G. LAUGHLIN, A. B.	<i>Physical Education</i>
A. B., Morehead State Teachers College, 1937	
JESSE T. MAYS, A. B., A. M.	<i>Industrial Arts</i>
A. B., Union College, 1931	
A. M., George Peabody College, 1933	
FRANK B. MILLER, A. B., M. Ed., Ph. D.	<i>Education</i>
A. B., University of Akron, 1925	
M. Ed., University of Akron, 1927	
Ph. D., University of Kentucky, 1934	
LEONARD MILLER, A. B., A. M.	<i>Physical Education</i>
A. B., University of Kentucky, 1931	
A. M., University of Kentucky, 1937	
MARY PAGE MILTON, A. B.	<i>Registrar</i>
A. B., University of Kentucky, 1926	
JUANITA MINISH, A. B., A. M.	<i>Training School</i>
A. B., Transylvania College, 1919	
A. M., George Peabody College, 1930	
AMY IRENE MOORE, B. S., A. M.	<i>Training School</i>
B. S., Kansas State Teachers College, 1917	
A. M., University of Chicago, 1925	
ALICE PALMER MORRIS, A. B., B. O.	<i>Librarian</i>
A. B., Carroll College, 1913	
B. O., Carroll College, 1914	
EDNA NEAL, A. B., A. M.	<i>Training School</i>
A. B., University of Kentucky, 1929	
A. M., Teachers College, Columbia University, 1933	
CLARENCE E. NICKELL, A. B., A. M.	<i>Education</i>
A. B., University of Kentucky, 1925	
A. M., University of Kentucky, 1932	
LUTIE D. NICKEL, A. B., A. M.	<i>Training School</i>
A. B., Morehead State Teachers College, 1936	
A. M., University of Kentucky, 1937	
ETTA M. PAULSON, A. B., A. M.	<i>Training School</i>
A. B., Western State Teachers College, Kalamazoo, Mich., 1922	
A. M., Teachers College, Columbia University, 1930	
CHARLES O. PERATT, A. B., Ph. B., A. M.	<i>History and Government</i>
A. B., University of Kentucky, 1904	
Ph. B., University of Chicago, 1916	
A. M., Columbia University, 1919	
DOROTHY J. RIGGS, A. B., A. M.	<i>Music</i>
A. B., University of Iowa, 1930	
A. M., Eastman School of Music, 1932	
BETTIE M. ROBINSON, A. B., A. M.	<i>English</i>
A. B., Georgetown College, 1893	
A. M., Columbia University, 1926	
ELIZABETH ROOME, B. S., A. M.	<i>Training School</i>
B. S., Columbia University, 1924	
A. M., University of North Carolina, 1930	

- EARL KING SENFF, A. B., A. M.....*History and Government*  
 A. B., University of Kentucky, 1931  
 A. M., University of Chicago, 1933
- J. L. SULLIVAN, B. S., M. S.....*Chemistry*  
 B. S., University of Kentucky, 1928  
 M. S., Iowa State College, 1929
- RUSSELL FRANKLIN TERRELL, A. B., A. M., Ph. D.....*Economics and Sociology*  
 A. B., University of Nashville, 1904  
 A. M., Peabody College, 1916  
 Ph. D., Peabody College, 1926
- \*REBECCA THOMPSON, B. S., A. M.....*Training School*  
 B. S., Peabody College, 1925  
 A. M., Peabody College, 1929
- ERNESTINE TROEMEL, B. S., A. M.....*Health and Physical Education*  
 B. S., University of Wisconsin, 1925  
 A. M., Teachers College, Columbia University, 1932
- WILFRED A. WELTER, B. S., M. S., Ph. D.....*Biology*  
 B. S., University of Minnesota, 1926  
 M. S., Iowa State College, 1927
- ELLA WILKES, B. S., M. S.....*Geography*  
 B. S., Peabody College, 1924  
 M. S., University of Chicago, 1931
- WILLIAM CLEMARD WINELAND, B. S., M. S.....*Mathematics and Physics*  
 B. S., University of Kentucky, 1933  
 M. S., University of Kentucky, 1935
- GEORGE THOMPSON YOUNG, A. B., A. M.....*Training School*  
 A. B., Centre College, 1931  
 A. M., Columbia University, 1935
- THOMAS D. YOUNG, A. B., A. M.....*Art*  
 A. B., University of Kentucky, 1925  
 A. M., Columbia University, 1932

---

\* Leave of absence for 1937-38.





VIEW LOOKING EAST FROM FIELDS HALL

# SCHEDULE OF COLLEGE CLASSES FOR THE FIRST SUMMER TERM

Course Number	Subject	Credits	Hour	Days	Building	Room	Instructor
<b>AGRICULTURE</b>							
101	General Agriculture .....	3	7:00	Daily	Sci.	105	Haggan
215	Horticulture .....	3	8:40	Daily	Sci.	105	Haggan
<b>ART</b>							
121 (1)	Public School Art .....	2	8:40	MTWTh	Library		Claypool
121 (2)	Public School Art .....	2	10:20	MTWTh	Library		Young
161	Art Appreciation .....	1	10:20	TTh	Library		Claypool
291	Color and Design .....	2	By appointment		Library		Young
304	Fig. Draw. and Compos. ....	2	7:00-10:10	MTWTh	Library		Young
311	Beginning Oil Painting .....	2	1:00- 3:30	MTWTh	Library		Claypool
314	Beginning Water Color .....	2	1:00- 3:30	MTWTh	Library		Claypool
412	Advanced Oil Painting .....	2	1:00- 3:30	MTWTh	Library		Claypool
<b>BIOLOGY</b>							
133	Human Physiology .....	3	10:20	MTWThS	Sci.	304	Carr
213	General Botany .....	4					
	Lecture		7:00	Daily	Sci.	312	.....
	Laboratory		1:00	MTWThF	Sci.	301	.....
231	Invertebrate Zoology .....	3					
	Lecture		8:40-10:10	MWF	Sci.	312	.....
	Laboratory		8:40-11:10	TThS	Sci.	317	.....
			9:40-11:10	MW	Sci.	317	.....
333	Ornithology .....	3					
	Lecture		7:00- 8:30	MWF	Sci.	304	Welter
	Field		6:00- 8:30	MWF	Sci.	302	Welter
	Laboratory		Three hours per week to be arranged		Sci.	302	Welter
417	Bacteriology .....	4					
	Lecture		9:10-10:10	MTWThS	Sci.	304	Carr
	Laboratory		7:00- 9:00	Daily	Sci.	301	Carr
433	Field Vertebrate Zoology .....	3					
	Lecture		8:40-10:10	WF	Sci.	309	Welter
	Laboratory		8:40-11:40	MTThS	Sci.	309	Welter
<b>CHEMISTRY</b>							
112	General Chemistry .....	5					
	Lecture		1:00- 2:15	MTWThF	Sci.	409	Sullivan
	Laboratory		8:00-11:00	MTWThS	Sci.	411	Sullivan
			8:00-10:10	F	Sci.	411	Sullivan
311	Organic Chemistry .....	5					
	Lecture		7:00- 8:00	Daily	Sci.	409	Sullivan
	Laboratory		8:00-11:00	MTWThS	Sci.	310	Sullivan
			8:00-10:10	F	Sci.	310	Sullivan
<b>COMMERCE</b>							
101	Beginning Typewriting ....	2	1:00	MTWThF	Adm.	4	.....
102	Intermediate Typewriting ..	2	7:00	Daily	Adm.	4	.....
202	Intermediate Shorthand ..	3	8:40	Daily	Adm.	5	.....
	Laboratory		10:20	MWTh	Adm.	5	.....
301	Principles of Accounting ..	4	7:00	Daily	Adm.	5	.....
	Laboratory		8:40	Daily	Adm.	5	.....



**SCHEDULE OF COLLEGE CLASSES FOR THE FIRST SUMMER TERM—Continued**

Course Number	Subject	Credits	Hour	Days	Building	Room	Instructor
<b>ECONOMICS</b>							
201	General Economics .....	3	8:40	Daily	Adm.	21	Fincel
442	Money and Banking .....	3	1:00	MTWThF	Adm.	21	Fincel
<b>SOCIOLOGY</b>							
202	Introduction to Socio. ....	3	7:00	Daily	Adm.	20	Terrell
301	Child Welfare .....	3	10:20	MTWThS	Adm.	20	Terrell
<b>EDUCATION</b>							
154	Educational Psychology....	3	8:40	Daily	Adm.	23	Miller
220	Fundamentals Elem. Edu. ....	4	8:40	Daily	Adm.	12	Judd
325	Directed Teaching .....	3	By appointment		Tr. Sch.		Lappin
326	Teaching of Reading .....	3	10:20	MTWThS	Adm.	12	Judd
327	Teaching Soc. Sci. in Elem. School .....	3	10:20	MTWThS	Adm.	7	Vaughan
350	Child Psychology .....	3	1:00	MTWThF	Adm.	6	Hoke
351	Princs. of Sec. Educ. ....	3	1:00	MTWThF	Adm.	23	Miller
371	Methods of Sec. Educ. ....	3	8:40	Daily	Adm.	22	Falls
375	Directed Teaching .....	3	By appointment		Tr. Sch.		Lappin
392	Rural School Superv. ....	3	3:00	MTWThF	Adm.	12	
425	Directed Teaching .....	3	By appointment		Tr. Sch.		Lappin
426	Pupil Accounting .....	3	1:00	MTWThF	Adm.	7	Nickell
454	Adolescent Psychology ....	3	3:00	MTWThF	Adm.	6	Hoke
475	Directed Teaching .....	3	By appointment		Tr. Sch.		Lappin
485	Directed Teaching .....	3	By appointment		Tr. Sch.		Lappin
493	H. S. Administration .....	3	10:20	MTWThS	Adm.	22	Falls
<b>ENGLISH</b>							
102	Freshman Composition ....	3	7:00	Daily	Adm.	10	Banks
226	Children's Literature .....	3	8:40	Daily	Adm.	8	Humphrey
231 (1)	English Literature .....	3	7:00	Daily	Adm.	13	Jackson
231 (2)	English Literature .....	3	8:40	Daily	Adm.	13	Jackson
232 (1)	English Literature .....	3	8:40	Daily	Adm.	10	Banks
232 (2)	English Literature .....	3	10:20	MTWThS	Adm.	11	Robinson
301	Advanced Composition ....	3	10:20	MTWThS	Adm.	9	Bradley
342	American Literature .....	3	1:00	MTWThF	Adm.	11	Robinson
350	World Literature .....	3	10:20	MTWThS	Adm.	8	Humphrey
438	Romanticism .....	3	1:00	MTWThF	Adm.	9	Bradley
<b>LIBRARY SCIENCE</b>							
186	Library Science .....	1	1:00	MTWTh	Library		Morris
<b>GEOGRAPHY</b>							
100	Principles of Geography....	3	1:00	Daily	Sci.	217	Braun
241	Geography of North Am....	3	10:20	MTWThS	Sci.	201	Wilkes
280	Australia .....	3	10:20	MTWThS	Sci.	217	Braun
475	Methods and Materials....	3	8:40	Daily	Sci.	201	Wilkes
<b>HISTORY</b>							
132	History of Civiliz. ....	3	7:00	Daily	Adm.	16	Peratt
241	U. S. History .....	3	8:40	Daily	Adm.	17	Senff
242	U. S. History .....	3	1:00	MTWThF	Adm.	17	Senff
331	History of Mod. Eur. ....	3	10:20	MTWThS	Adm.	16	Peratt
375	Teaching History .....	3	1:00	Daily	Adm.	16	
440	Colonial History .....	3	7:00	Daily	Adm.	17	

**SCHEDULE OF COLLEGE CLASSES FOR THE FIRST SUMMER TERM—Continued**

Course Number	Subject	Credits	Hour	Days	Building	Room	Instructor
POLITICAL SCIENCE							
241	American Government .....	3	7:00	Daily	Adm.	18	Holtzclaw
344	Kentucky Government .....	3	1:00	MTWThF	Adm.	18	Holtzclaw
HOME ECONOMICS							
244	Sel. and Care of Cloth.....	2	8:40	MTWThF	Sci.	403	Hall
353	Soc. and Econ. Probs. of Family .....	2	10:20	MTWThS	Sci.	403	Hall
451	Interior Decoration .....	2	1:00	MTWThF	Sci.	401	Hall
INDUSTRIAL ARTS							
103	Mechanical Drawing .....	3	10:20	Daily	Sci.	103	Mays
110	Woodturning .....	2	10:20	MTWThS	Sci.	102	Mays
111	General Woodwork .....	3	10:20	MTWThS	Sci.	102	Mays
203	Mechanical Drawing .....	3	10:20	Daily	Sci.	103	Mays
204	Architectural Drawing ....	3	8:40	Daily	Sci.	103	Mays
MODERN FOREIGN LANGUAGES							
French							
305	Conversation and Comp....	3	7:00	Daily	Adm.	14	Bach
306	Rapid Reading Course ....	3	8:40	Daily	Adm.	14	Bach
MATHEMATICS							
121	Teachers Arithmetic .....	3	8:40	Daily	Adm.	19	Nickell
141a	Trigonometry .....	3	8:40	Daily	Sci.	210	Wineland
151a	Algebra .....	3	8:40	Daily	Sci.	206	Fair
361	Integral Calculus .....	3	7:00	Daily	Sci.	206	Fair
441	Theory of Equations .....	3	8:40	Daily	Sci.	212	Black
PHYSICS							
101	Physical Science .....	3	7:00	Daily	Sci.	210	Wineland
131a	Elementary Physics .....	3	10:20	MTWThS	Sci.	209	Wineland
132a	Elementary Physics .....	3	10:20	MTWThS	Sci.	210	Black
371	Special Problems in Physics .....	1	To be arranged		Sci.	207	Staff
MUSIC							
115	Violin .....	1	By appointment		F. H.	4	Davis
121 (1)	Public School Music .....	2	8:40	Daily	F. H.	3	Riggs
121 (2)	Public School Music .....	2	10:20	MTWTh	F. H.	3	Davis
122	Public School Music .....	2	8:40	Daily	F. H.	3	George
151	Voice .....	1	By appointment		F. H.	5	George
154	Piano .....	1	By appointment		F. H.	1	Riggs
155	Violin .....	1	By appointment		F. H.	4	Davis
156	Violin .....	1	By appointment		F. H.	4	Davis
157	Brass Instruments .....	1	By appointment		F. H.	5	George
254	Piano .....	1	By appointment		F. H.	1	Riggs
257	Woodwind Instruments ....	1	By appointment		F. H.	5	George
259	Percussion Instruments....	1	By appointment		F. H.	5	George



# SCHEDULE OF COLLEGE CLASSES FOR THE FIRST SUMMER TERM—Continued

Course Number	Subject	Credits	Hour	Days	Building	Room	Instructor
	<b>Music—Continued</b>						
354	Piano .....	1	By appointment		F. H.	1	Riggs
454	Piano .....	1	By appointment		F. H.	1	Riggs
	Chorus .....		4:00 p. m.	M	Audit.		George
	<b>HEALTH AND PHYSICAL EDUCATION</b>						
	<b>(Courses for Both Men and Women)</b>						
104	Personal Hygiene .....	2	8:40-10:10	Daily	Admin.	1	Caudill
137	Social Dancing .....	1	7:00- 7:45	Daily	Aux. Gym.		Troemel
203	First Aid .....	2	8:40-10:10	Daily	Admin.	6	Downing
220	Games for Elem. School..	2	8:40-10:10	Daily	Gymnasium		Miller
	<b>(For Men)</b>						
116	Elementary Tennis .....	1	10:20-11:05	MTWThF	Courts		Miller
117	Elementary Swimming .....	1	10:20-11:05	MTWThF	Pool		Downing
217	Intermediate Swimming....	1	10:20-11:05	MTWThF	Pool		Downing
277	*Basketball Coaching .....	1	1:00- 3:00	MTWThF	Gym.		Johnson
278	**Football Coaching .....	1	1:00- 3:00	MTWThF	Gym.		Johnson
	<b>(For Women)</b>						
116 (1)	Elementary Tennis .....	1	7:00- 7:45	Daily	Courts		Caudill
116 (2)	Elementary Tennis .....	1	7:45- 8:30	Daily	Courts		Troemel
117 (1)	Elementary Swimming.....	1	8:40- 9:25	Daily	Pool		Troemel
117 (2)	Elementary Swimming.....	1	1:00- 1:45	MTWThF	Pool		Caudill
217	Intermediate Swimming....	1	1:45- 2:30	MTWThF	Pool		Troemel
FREE PERIODS IN THE POOL—			2:30-3:15; 3:15-4:00; 4:00-4:45.				

\* Will be offered for the first two and one-half weeks of the summer term.

\*\* Will be offered the second two and one-half weeks of the summer term.

## SCHEDULE OF COLLEGE CLASSES FOR THE SECOND SUMMER TERM

	<b>AGRICULTURE</b>						
101	General Agriculture .....	3	7:00	Daily	Sci.	105	Haggan
180	Agronomy .....	3	8:40	Daily	Sci.	105	Haggan
	<b>ART</b>						
121	Beginning P. S. Art .....	2	10:20	MTWTh	Library		Young
122	Advanced P. S. Art.....	2	8:40	MTWTh	Library		Claypool
291	Color and Design .....	2	By appointment		Library		Young
311	Beginning Oil Painting....	2	By appointment		Library		Claypool
314	Beginning Water Color....	2	By appointment		Library		Claypool
381	Beginning Comm. Art.....	2	7:00-10:10	MTWTh	Library		Young
412	Advanced Oil Painting....	2	By appointment		Library		Claypool
415	Advanced Water Color....	2	By appointment		Library		Claypool
482	Advanced Comm. Art.....	2	7:00-10:10	MTWTh	Library		Young

**SCHEDULE OF COLLEGE CLASSES FOR THE SECOND SUMMER TERM—Cont.**

Course Number	Subject	Credits	Hour	Days	Building	Room	Instructor
<b>BIOLOGY</b>							
232	Vertebrate Zoology .....	3					
	Lecture		7:00- 8:00	MWF	Sci.	304	Carr
	Laboratory		7:00- 9:30	TThS	Sci.	317	Carr
			8:00- 9:30	MWF	Sci.	317	Carr
315	Local Flora .....	4					
	Lecture and Lab.		8:40-12:08	MTWThS	Sci.	301	Welter
			8:40-10:10	F	Sci.	301	Welter
334	Entomology .....	3					
	Lecture		10:20	MTWThS	Sci.	317	Carr
	Laboratory		One hour daily to be arranged		Sci.	317	Welter
<b>CHEMISTRY</b>							
312	Organic Chemistry .....	5					
	Lecture		7:00- 8:00	Daily	Sci.	409	Sullivan
	Laboratory		8:00-11:00	MTWThS	Sci.	310	Sullivan
			8:00-10:10	F	Sci.	310	Sullivan
413	Physiological Chem. ....	5					
	Lecture		11:00-12:10	MTWThS	Sci.	409	Sullivan
	Laboratory		8:00-11:00	MTWThS	Sci.	310	Sullivan
			8:00-10:10	F	Sci.	310	Sullivan
<b>COMMERCE</b>							
101	Beginning Typewriting.....	2	7:00	Daily	Adm.	4	.....
102	Intermed. Typewriting ....	2	1:00	MTWThF	Adm.	4	.....
302	Princs. of Accounting .....	4					
	Lecture		7:00	Daily	Adm.	5	.....
	Laboratory		8:40	Daily	Adm.	5	.....
401	Business Law .....	3	10:20	MTWThS	Adm.	5	.....
<b>ECONOMICS</b>							
202	General Economics .....	3	8:40	Daily	Adm.	21	Fincel
441	Public Finance .....	3	1:00	MTWThF	Adm.	21	Fincel
<b>SOCIOLOGY</b>							
201	Intro. to Sociol. ....	3	7:00	Daily	Adm.	20	Terrell
401	Criminology .....	3	10:20	MTWThS	Adm.	20	Terrell
<b>EDUCATION</b>							
154	Educational Psychology....	3	8:40	Daily	Adm.	6	Hoke
326	Teaching of Reading .....	3	8:40	Daily	Adm.	12	Judd
354	Character Education .....	3	3:00	MTWThF	Adm.	6	Hoke
361	History of Educ. in U. S....	3	10:20	MTWThS	Adm.	12	Judd
423	Elem. Sch. Curriculum ....	3	10:20	MTWThS	Adm.	7	Nickell
470	Tests and Measurments....	3	10:20	MTWThS	Adm.	23	Miller
475	Directed Teaching .....	3	By appointment		Tr. Sch.		Lappin
484	Philosophy of Education....	3	8:40	Daily	Adm.	23	Miller
485	Directed Teaching .....	3	By appointment		Tr. Sch.		Lappin



**SCHEDULE OF COLLEGE CLASSES FOR THE SECOND SUMMER TERM—Cont.**

Course Number	Subject	Credits	Hour	Days	Building	Room	Instructor
<b>ENGLISH</b>							
102	Freshman Composition .....	3	7:00	Daily	Adm.	10	Banks
231	English Literature .....	3	8:40	Daily	Adm.	13	Jackson
232	English Literature .....	3	8:40	Daily	Adm.	10	Banks
334	Modern Poetry .....	3	10:20	MTWThS	Adm.	8	Humphrey
335	Shakespeare .....	3	7:00	Daily	Adm.	9	Bradley
341	American Literature .....	3	10:20	MTWThS	Adm.	11	Robinson
342	American Literature .....	3	8:40	Daily	Adm.	11	Robinson
350	World Literature .....	3	8:40	Daily	Adm.	8	Humphrey
439	Victorian Poetry .....	3	10:20	MTWThS	Adm.	9	Bradley
<b>GEOGRAPHY</b>							
247	Latin America .....	3	1:00	MTWThF	Sci.	201	Wilkes
344	Kentucky .....	3	8:40	Daily	Sci.	217	Braun
380	Field Geography .....	3	10:20	MTWThS	Sci.	217	Braun
383	Asia .....	3	8:40	Daily	Sci.	201	Wilkes
<b>HISTORY</b>							
131	History of Civilization ....	3	7:00	Daily	Adm.	16	Peratt
242	U. S. History .....	3	8:40	Daily	Adm.	17	Senff
332	Hist. of Modern Europe.....	3	10:20	MTWThS	Adm.	16	Peratt
446	Amer. Foreign Relations..	3	1:00	MTWThF	Adm.	17	Senff
<b>POLITICAL SCIENCE</b>							
141	Principles of Citizenship..	3	7:00	Daily	Adm.	18	Holtzclaw
446	Constitutional Law .....	3	8:40	Daily	Adm.	18	Holtzclaw
<b>HOME ECONOMICS</b>							
143	Textiles .....	2	8:40-10:10	MTWThF	Sci.	401	Hall
	or						
351	House Furn. & Equipment	3	8:40-10:10	Daily	Sci.	403	Hall
244	Selection and Care of						
	Clothing .....	2	10:20-12:08	MTWThS	Sci.	403	Hall
<b>INDUSTRIAL ARTS</b>							
103	Mechanical Drawing .....	3	10:20	MTWThS	Sci.	103	Mays
110	Woodturning .....	2	By appointment		Sci.	102	Mays
111	General Woodwork .....	3	10:20	MTWThS	Sci.	102	Mays
203	Mechanical Drawing .....	3	10:20	Daily	Sci.	103	Mays
204	Architectural Drawing ....	3	8:40	Daily	Sci.	103	Mays
<b>MODERN FOREIGN LANGUAGES</b>							
Students interested in foreign languages should see Dr. Bach. Courses will be offered to suit the needs of the students.							
<b>MATHEMATICS</b>							
121	Teachers Arithmetic .....	3	8:40	Daily	Adm.	19	Nickell
*141a	Trigonometry .....	3	8:40	Daily	Sci.	206	Fair
141b	Trigonometry .....	2	8:40	Daily	Sci.	212	Wineland
*151a	Algebra .....	3	8:40	Daily	Sci.	206	Fair

\* Either of these courses will be given, depending on demand.

**SCHEDULE OF COLLEGE CLASSES FOR THE SECOND SUMMER TERM—Cont.**

Course Number	Subject	Credits	Hour	Days	Building	Room	Instructor
<b>Mathematics—Cont.</b>							
151b	Algebra .....	2	10:20	MTWThS	Sci.	206	Fair
152	Math. of Finance .....	3	7:00	Daily	Sci.	212	Wineland
<b>PHYSICS</b>							
101	Physical Science .....	3	8:40	Daily	Sci.	210	Black
131b	Elementary Physics .....	2	10:20	MTWThS	Sci.	209	Wineland
132b	Elementary Physics .....	2	10:20	MTWThS	Sci.	210	Black
371	Special Probs. in Physics	1	By appointment		Sci.	207	Staff
<b>MUSIC</b>							
115	Violin .....	1	By appointment		F. H.	4	Davis
121	Public School Music .....	2	8:40	Daily	F. H.	3	George
122	Public School Music .....	2	10:20	MTWTh	F. H.	3	Davis
152	Voice .....	1	By appointment		F. H.	5	George
153	Piano .....	1	By appointment		F. H.	1	Riggs
155	Violin .....	1	By appointment		F. H.	4	Davis
156	Violin .....	1	By appointment		F. H.	4	Davis
158	Brass Instruments .....	1	By appointment		F. H.	5	George
253	Piano .....	1	By appointment		F. H.	1	Riggs
258	Woodwind Instruments .....	1	By appointment		F. H.	5	George
259	Percussion Instrs. ....	1	By appointment		F. H.	5	George
342	Harmony .....	2	8:40	Daily	F. H.	1	Riggs
353	Piano .....	1	By appointment		F. H.	1	Riggs
453	Piano .....	1	By appointment		F. H.	1	Riggs
	Chorus .....		4:00	M	Audit.		George
<b>HEALTH AND PHYSICAL EDUCATION</b>							
<b>(Courses for Both Men and Women)</b>							
104	Personal Hygiene .....	2	8:40-10:10	Daily	Admin.	1	Troemel
137	Social Dancing .....	1	7:00- 7:45	Daily	Aux. Gym.		Caudill
203	First Aid .....	2	8:40-10:10	Daily	Admin.		Downing
<b>(For Men)</b>							
116	Elementary Tennis .....	1	1:15- 2:00	MTWThF	Courts		Downing
117	Elementary Swimming.....	1	10:20-11:05	Daily	Pool		Downing
217	Intermediate Swimming..	1	11:05-11:50	Daily	Pool		Caudill
<b>(For Women)</b>							
116 (1)	Elementary Tennis .....	1	7:00- 7:45	Daily	Courts		Troemel
116 (2)	Elementary Tennis .....	1	7:45- 8:30	Daily	Courts		Caudill
117 (1)	Elementary Swimming .....	1	8:40- 9:25	Daily	Pool		Troemel
117 (2)	Elementary Swimming .....	1	1:00- 1:45	MTWThF	Pool		Caudill
217	Intermediate Swimming ..	1	1:45- 2:30	MTWThF	Pool		Caudill

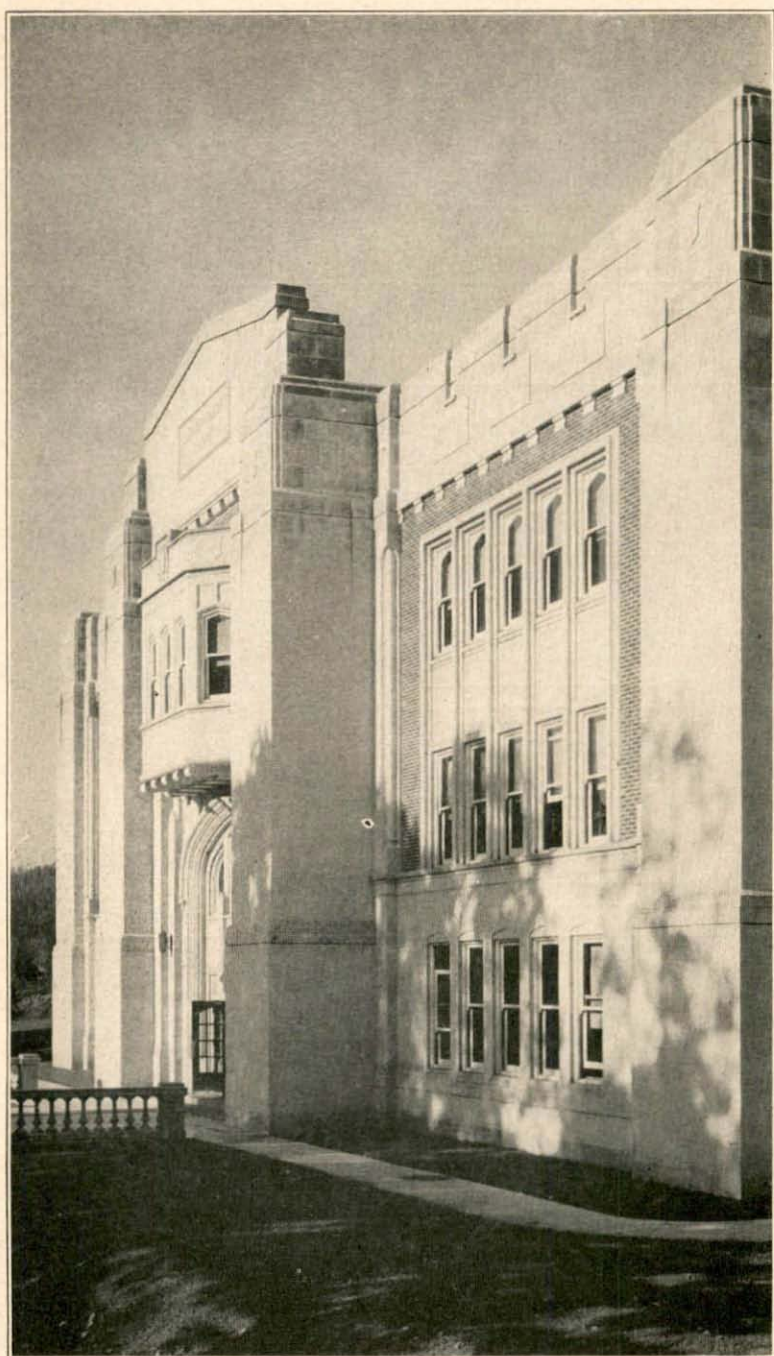


MOREHEAD STATE TEACHERS COLLEGE  
TRAINING SCHOOL

First Summer Term  
June 13th to July 16th

Number	Subject	Credit	Hour	Room	Instructor
ENGLISH					
25	Tenth Grade English .....	$\frac{1}{2}$	8 and 12	30	Minish
35	Eleventh Grade English .....	$\frac{1}{2}$	8 and 12	18	Day
47	Twelfth Grade English .....	$\frac{1}{2}$	7 and 11	15	Denney
FOREIGN LANGUAGE					
31	Beginning French .....	$\frac{1}{2}$	9 and 1	30	Minish
HISTORY AND SOCIAL SCIENCE					
31	U. S. History .....	$\frac{1}{2}$	7 and 11	12	Young
44	Economics .....	$\frac{1}{2}$	9 and 1	12	Young
MATHEMATICS					
31	Plane Geometry .....	$\frac{1}{2}$	7 and 11	17	Moore
SCIENCE					
30	Physiology .....	$\frac{1}{2}$	8 and 12	Lab.	Catlett
21	Biology .....	$\frac{1}{2}$	9 and 1	Lab.	Catlett

Students may earn one unit of credit during the term.



THE JOHNSON CAMDEN LIBRARY



## CURRICULA

The curricular offerings at Morehead are varied. Students may pursue courses leading to the (1) Provisional Elementary certificate; (2) the Standard Elementary certificate and the degree; (3) the Provisional High School certificate and the degree; (4) the Provisional certificate in Administration and Supervision and the degree; and (5) the degree without a certificate. The college awards two degrees, the Bachelor of Arts and the Bachelor of Science. Each degree may be taken with or without a certificate. The student should notice that the requirements for the degrees differ according to the type of degree and the type of certificate. The chief distinction between the Bachelor of Arts degree and the Bachelor of Science degree is the 60-hour requirement in science for the Bachelor of Science degree. There are also differences between the Bachelor of Arts degree with the Elementary certificate and the same degree with the High School certificate. There are accordingly eight distinct courses of study leading to the degree. Students should choose early in their college career which course they prefer to take.

### GENERAL REQUIREMENTS FOR THE DEGREE

The candidate for the degree must meet the following general requirements:

1. A minimum of 128 hours of prescribed and elective college credit.
2. A standing of 1 on all work offered for a degree.
3. At least three-fourths of the credit in residence in some standard college and at least one year in residence and one semester immediately preceding graduation in this institution.
4. Not less than 43 hours of the work offered for the degree should be selected from courses numbered 300 or above.

## DEGREES AND CERTIFICATES

### THE BACHELOR OF ARTS DEGREE

#### I. THE BACHELOR OF ARTS AND THE STANDARD ELEMENTARY CERTIFICATE

a. Education, including	128 hours
1. General Psychology or Educational Psychology.....	3 hours
2. Fundamentals of Elementary Education.....	4 hours
3. Supervised Student Teaching.....	6 hours
4. Educational Measurements .....	2 hours
5. Child Psychology .....	3 hours
6. Teaching Reading.....	3 hours
*7. Elective in Elementary Education.....	9 hours
<hr/>	
Total	30 hours
b. English, including	
1. Oral and Written Composition.....	6 hours
2. American Literature or English Literature or Survey of Literature.....	6 hours
3. Children's Literature .....	3 hours
<hr/>	
Total	15 hours
c. Science, selected from	
Biology, Chemistry, General Science, Geology, Physics.....	12 hours
<hr/>	
Total	12 hours
d. Social Sciences, including	
1. American History and Government or History of Civilization .....	6 hours
2. Principles of Sociology or Rural Social Economy.....	3 hours
3. History, Government, Sociology or Economics.....	6 hours
<hr/>	
Total	15 hours
e. Teachers Arithmetic.....	3 hours
<hr/>	
Total	3 hours
f. Art, including	
a. Public School Art .....	2 hours
b. Elective .....	2 hours
<hr/>	
Total	4 hours

\* Of these nine hours, three must be from the field of elementary education and six may be taken from either general education courses or courses in Administration and Supervision.



g. Music, including	
a. Public School Music.....	2 hours
b. Elective .....	2 hours
	<hr/>
	Total 4 hours
h. Public School Hygiene and Sanitation.....	2 hours
	<hr/>
	Total 2 hours
i. Physical Education .....	2 hours
	<hr/>
	Total 2 hours
j. Geography, including	
a. Principles of Geography.....	3 hours
b. Elective .....	3 hours
	<hr/>
	Total 6 hours
k. Elective .....	27-35 hours
	<hr/>
	Total 27-35 hours

## II. THE BACHELOR OF ARTS DEGREE AND THE PROVISIONAL HIGH SCHOOL CERTIFICATE 128 hours

a. Education .....	18 hours
1. Psychology or Educational Psychology.....	3 hours
2. Supervised Student Teaching (At least three hours must be in the secondary school) .....	6 hours
3. Electives in secondary education .....	9 hours
(6 of these shall be in secondary education and 3 may be in general education.)	
b. English .....	12 hours
c. Science (Biology, Chemistry, Geology, Physics) .....	12 hours
d. Social Sciences (Economics, Government, History, or Sociology) .....	12 hours
e. Mathematics (exclusive of Teachers Arithmetic) .....	6 hours
or	
*Foreign Language .....	6-12 hours
f. Physical Education .....	1 hour
g. Health .....	2 hours

\* If three units or more of a foreign language are offered for admission, six semester hours in the same language will be required; if two units of a foreign language are offered for admission, nine semester hours in the same language will be required; if one unit or less of a foreign language is offered for admission, twelve semester hours in the same language will be required.

- h. One academic major of not less than 24 hours and two academic minors of not less than 18 hours each; or two academic majors of not less than 24 hours each .....48-50 hours
- i. Electives ..... 1-27 hours

### III. THE BACHELOR OF ARTS DEGREE AND THE PROVISIONAL CERTIFICATE IN ADMINISTRATION AND SUPERVISION

The candidate for this degree must meet the requirements for either the A. B. degree and the Standard Elementary certificate or the A. B. degree and the Provisional High School certificate and include in his program of studies the following professional courses:

- a. Administration and Supervision..... 6 hours
- b. Elementary Education ..... 6 hours
- c. Secondary Education ..... 6 hours
- d. Supervised Student Teaching ..... 6 hours

### IV. THE BACHELOR OF ARTS DEGREE WITHOUT A CERTIFICATE

128 hours

- a. One Foreign Language .....12 hours
- b. English .....12 hours
- c. Science (Biology, Chemistry, Geology, Physics).....12 hours
- d. Mathematics (not including Teachers Arithmetic).... 7 hours
- e. Social Sciences .....12 hours
- f. Two academic majors of not less than 24 hours each or one academic major of not less than 24 hours and two academic minors of not less than 18 hours each .....48-50 hours

## THE BACHELOR OF SCIENCE DEGREE

### I. THE BACHELOR OF SCIENCE DEGREE AND THE STANDARD ELEMENTARY CERTIFICATE

128 hours

- a. Education, including
  - 1. General Psychology or Educational Psychology..... 3 hours
  - 2. Fundamentals of Elementary Education ..... 4 hours
  - 3. Supervised Student Teaching ..... 6 hours
  - 4. Educational Measurements ..... 2 hours
  - 5. Child Psychology ..... 3 hours
  - 6. Teaching Reading ..... 3 hours
  - \*\* 7. Elective in Elementary Education ..... 9 hours

Total 30 hours

---

\*\*Of these nine hours, three must be from the field of elementary education and six may be taken from either general education courses or courses in Administration and Supervision.



- b. English, including
- |                                                                               |         |
|-------------------------------------------------------------------------------|---------|
| 1. Oral and Written Composition .....                                         | 6 hours |
| 2. American Literature or English<br>Literature or Survey of Literature ..... | 6 hours |
| 3. Children's Literature .....                                                | 3 hours |
| <hr/>                                                                         |         |
| Total 15 hours                                                                |         |
- c. Science, selected from Agriculture, Home Economics,  
Biology, Chemistry, General Science, Geology, Physics,  
Mathematics .....
 60 hours || --- | |
| Total 60 hours | |

d. Social Sciences including

1. American History and Government or History of Civilization .....	6 hours
2. Principles of Sociology or Rural Social Economy .....	3 hours
3. History, Government, Sociology or Economics.....	6 hours
<hr/>	
Total 15 hours	

e. Teachers Arithmetic .....

 3 hours || --- | |
| Total 3 hours | |

f. Art, including

a. Public School Art .....	2 hours
b. Elective .....	2 hours
<hr/>	
Total 4 hours	

g. Music, including

a. Public School Music .....	2 hours
b. Elective .....	2 hours
<hr/>	
Total 4 hours	

h. Public School Hygiene and Sanitation .....

 2 hours || --- | |
| Total 2 hours | |

i. Physical Education .....

 2 hours || --- | |
| Total 2 hours | |

j. Geography, including

a. Principles of Geography .....	3 hours
b. Elective .....	3 hours
<hr/>	
Total 6 hours	

k. Electives (All electives must be in science because the total  
required hours will exceed slightly 128.)

## II. THE BACHELOR OF SCIENCE DEGREE AND THE PROVISIONAL HIGH SCHOOL CERTIFICATE

- a. Education .....18 hours
  - 1. Psychology or Educational Psychology... 3 hours
  - 2. Supervised Student Teaching (At least three hours must be in the secondary school.) ..... 6 hours
  - 3. Electives in secondary education ..... 9 hours  
(6 of these shall be in secondary education and 3 may be in general education.)
- b. English .....12 hours
- c. Science (Biology, Agriculture, Home Economics, Mathematics, Chemistry, Geology, Physics) .....60 hours
- d. Social Sciences (Economics, Government, History, or Sociology) .....12 hours
- e. Mathematics (exclusive of Teachers Arithmetic)..... 6 hours  
or
- f. \*Foreign Language .....6-12 hours
- g. Physical Education ..... 1 hour
- h. Health ..... 2 hours
- i. One academic major of not less than 24 hours and two academic minors of not less than 18 hours each; or two academic majors of not less than 24 hours each .....48-50 hours  
(These majors and minors should be selected from the science department.)
- j. Electives .....1-27 hours

## III. THE BACHELOR OF SCIENCE DEGREE AND THE PROVISIONAL CERTIFICATE IN ADMINISTRATION AND SUPERVISION

The candidate for this degree must meet the requirements for either the B. S. degree and the Standard Elementary certificate or the B. S. degree and the Provisional High School certificate and include in his program of studies the following professional courses:

- a. Administration and Supervision ..... 6 hours
- b. Elementary Education ..... 6 hours
- c. Secondary Education ..... 6 hours
- d. Supervised Student Teaching ..... 6 hours

---

\* If three units or more of a foreign language are offered for admission, six semester hours in the same language will be required; if two units of a foreign language are offered for admission, nine semester hours in the same language will be required; if one unit or less of a foreign language is offered for admission, twelve semester hours in the same language will be required.



#### IV. THE BACHELOR OF SCIENCE DEGREE WITHOUT A CERTIFICATE

	128 hours
a. One Foreign Language .....	12 hours
b. English .....	12 hours
c. Science (Biology, Agriculture, Home Economics, Mathematics, Chemistry, Geology, Physics) .....	60 hours
d. Mathematics (not including Teachers Arithmetic)....	7 hours
e. Social Sciences .....	12 hours
f. Two academic majors of not less than 24 hours each or one academic major of not less than 24 hours and two academic minors of not less than 18 hours each .....	48-50 hours
(These majors and minors should be selected from the science departments.)	

#### THE PROVISIONAL ELEMENTARY CERTIFICATE

The first certificate to be issued on college credit is the Provisional Elementary Certificate. The applicant for this certificate must have completed two years of college credit (sixty-four hours) with a standing of one or better and at least three-fourths of the work done in residence, including the required courses listed below. This certificate is valid for three years of teaching and subject to renewal.

#### REQUIRED COURSES

a. Education, including	
1. Educational Psychology or General Psychology....	3 hours
2. Fundamentals of Elementary Education .....	4 hours
3. Supervised Student Teaching .....	3 hours
4. Elective Course in Education .....	3 hours
	<hr/>
	Total 13 hours
b. English, including	
1. Oral and Written Composition .....	6 hours
2. English Literature or American Literature or Survey of Literature .....	3 hours
3. Children's Literature .....	3 hours
	<hr/>
	Total 12 hours
c. Social Science, including	
1. American History and Citizenship (integrated)....	6 hours
2. Or American History .....	3 hours
3. And Citizenship (separated) .....	3 hours
4. Or History of Civilization .....	6 hours
	<hr/>
	Total 6 hours

d. Principles of Geography .....	3 hours
Total	3 hours
e. Public School Music .....	2 hours
Total	2 hours
f. Public School Art .....	2 hours
Total	2 hours
g. Teachers Arithmetic .....	3 hours
Total	3 hours
h. Public Hygiene and Sanitation .....	2 hours
Total	2 hours
i. Science (Biology, Chemistry, General Science, Geology, Physics) .....	5 hours
Total	5 hours
j. Physical Education .....	2 hours
Total	2 hours
k. General Agriculture, or .....	2 hours
Industrial Arts, or .....	2 hours
Home and Social Problems, or .....	2 hours
Rural Social Economy, or .....	2 hours
Principles of Sociology .....	2 hours
Total	2 hours
l. Elective .....	12 hours
Total	12 hours
Total	64 hours

**Attendance Officer's Certificate** valid for three years shall be issued to a person who has met the requirements of law and who, in addition thereto, completes (a) a two-year curriculum for the training of teachers, which curriculum shall include three semester hours in pupil accounting; or (b) completes a two-year standard college curriculum which shall include 12 semester hours in education courses with 3 semester hours in pupil personnel. This certificate may be reissued every three years upon three years experience as attendance officer, or 16 semester hours of standard college training.



## VALIDITY AND TENURE OF CERTIFICATES

Certificates issued before September 1, 1935, will be valid as long as they remain in force. They can be renewed, or extended upon the conditions set out in the law and regulations in force at the time they were issued. A certificate issued before September 1, 1935, and valid for holding a particular type of position will be legally valid for holding the same type of position after September 1, 1935.

Certificates issued after September 1, 1935, will be valid at the school levels and positions for which they are issued.

**CERTIFICATES OF FORMER ISSUE:** The validity of any certificate or license in force at the time this act goes into effect shall not be impaired by this act, and such certificate or license shall be reissued or renewed in accordance with the terms of the law applying at the date of issue.

## MAJORS AND MINORS

Not later than the beginning of the sophomore year, the applicants for degrees must file with the Registrar their selections of majors and minors. (This does not include those who are applying for the Bachelor of Arts with the Standard Elementary certificate.) The heads of the departments in the major and minor fields must approve the courses to be taken before the blank is filed. Two majors of twenty-four hours each, or one major and two minors of eighteen hours each, may be selected.

Education cannot be selected as a major or minor.

A student may choose his major or minor from any one of the subjects listed below:

Art	History and Government
Biology	Home Economics
Chemistry	Industrial Arts
Commerce	Mathematics
English	Music
French	Physical Education
Geography	Physics
History	Sociology and Economics

Beginning this semester, a minor in Physical Education for both men and women will be offered. All freshmen will be required to take two hours of Physical Education in the activity field.

JOHNSON CAMDEN LIBRARY  
MOREHEAD STATE UNIVERSITY  
MOREHEAD, KENTUCKY