

This newspaper is read by almost every body, with buying power, in the Morehead area. It has a circulation of over 90% saturation in Rowan County.

# The Morehead News

Formerly Rowan County News—Name Changed January, 1963

MOREHEAD, KENTUCKY, THURSDAY MORNING, MAY 7, 1964

FOR CIRCULATION BY MAIL  
NEWS PAPERS FOR THE HOME  
BELONGING TO PUBLIC LIBRARIES  
See Ky. Statutes Article 133

On Newsstands 10c  
BY MAIL  
In Kentucky, One Year \$3.50  
Outside Kentucky, Two Years \$7.50  
Outside Kentucky, One Year \$4.50  
Number Nineteen

## Gas Line Extension Completed

The Morehead Utility Plant Board has begun serving residents of the Tolliver Addition with gas, following completion of a gas line extension to that area.

Clint Johnson, the Utility Board superintendent, said 430 new gas installations have been made, and that the anticipated total will be approximately 100-150.

Work on sanitary sewage lines to the same section is about 20 percent completed, Johnson said, and should be finished within the next eight weeks.

Construction is being done by LeRoy Hodges of Morehead. Money for the sewer and gas line extensions was provided partially from a Federal grant, but most of it is being financed from Utility Plant Board funds.

The Tolliver Addition area was annexed a year ago by the city. In that period police and fire protection, along with street lights and garbage service have been extended.

Completion of the sewage project will make the full range of city services available to residents of that section.

## City, County Tax Boards Meeting

Persons who wish to protest the assessment of their real or personal property in either the City of Morehead or in Rowan County may do so shortly.

The City's Board of Equalizers—Dr. Norman Tant, Art Blair and Herman Brown—will meet at 7 p.m. each evening at city hall to hear taxpayer complaints.

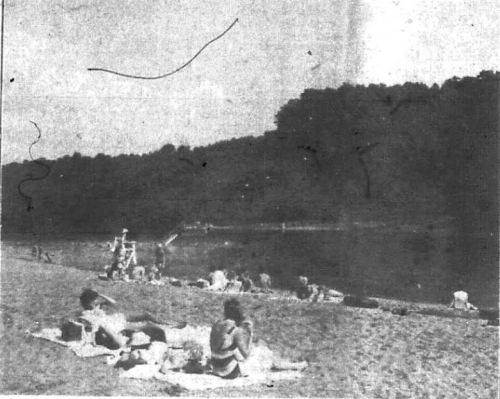
The Rowan County Board will meet starting Monday in the office of Rowan County Tax Commissioner Juanita Wilson.

## Hit-Run Mishap Only Accident Reported Here

A car being driven east on US 60 was sideswiped by another vehicle passing it Friday in the only auto accident investigated in Rowan County this week by Kentucky State Police.

Trooper Carl B. Slaus said the passenger vehicle driven by Ethel Mabry Fultz, 53, of Boone, was hit by a passing car after the Fultz woman had started to pass another car.

The vehicle was struck when the Fultz car failed to stop. Slaus said it was a light green station wagon.



## Kentucky Vying for "Land of Lakes" Title

GREENO LAKE at Greeno Lake State Park, near Ashland, is one of the 30 reservoirs constructed by the State in the Department of Fish and Wildlife Resources program for 1963-64, including a total from local tax sources of \$204,076.91.

These figures, announced this week by State Superintendent of Public Instruction Harry M. Sparks, are based on a total of 102.2 units. Payments under the plan are made on the basis of a school district's total number of classroom and other units.

The foundation program's basic payment for Rowan County this year came to \$43,261.82, and this added to the local tax contribution of \$204,076.91 makes the total basic income for local schools come to \$307,338.74 for the year which is ending, Dr. Sparks pointed out.

Final calculation of the State's Minimum Foundation Program for public education under record 1913,756,116 allotted to Kentucky's 204 local school districts for the current school year.

Dr. Sparks said this year's allotment is an increase of more than \$918,000 over that for last year.

The total funding of the 1963-64 Minimum Foundation Program is \$160,338,836, Sparks said, almost \$4.6 million over the 1962-63 school year. Local school districts, as required by law, will make up the additional \$46,762,719 through local effort as their share of the Minimum Foundation Program's total cost, he said.

For the local share is an increase of more than \$1.7 million over that contributed last year, he added.

The Foundation program is based on a complex formula, designed to bring every school district up to minimum standards of education and opportunity, Sparks explained.

The total 1963-64 Foundation program allotments include: \$108,970,655, an increase of \$3,316,000 over last year.

For current expenses of school operation, \$24,450,300, an increase of \$650,310.

For capital outlay in buildings and equipment (an increase of \$16,300,000) on local districts, \$16,300,000, an increase of \$350,540.

For pupil transportation, \$10,617,780, an increase of \$207,455.

A total of 27,167 classroom units are in use that schools in the 204 districts, Sparks said. This is 1,056 more classrooms than last school year.

He pointed out that the allotments for current expenses and the number of classroom units, and that funds for instructional salaries are determined on the basis of a ranking of persons actually employed for the 1963-64 school year.

**CENSORED**  
Sen. Fulbright says we should think some "unthinkable thoughts" about the foreign policy of the U. S. It's beside the point, but some people have been thinking of unthinkable thoughts about it.

Sen. Fulbright says we should think some "unthinkable thoughts" about the foreign policy of the U. S. It's beside the point, but some people have been thinking of unthinkable thoughts about it.

Sen. Fulbright says we should think some "unthinkable thoughts" about the foreign policy of the U. S. It's beside the point, but some people have been thinking of unthinkable thoughts about it.

## MSC Source Says 35¢ Is The Highest Water Rate Asked By School

### Heart Attack Takes Harry Goldberg, 57

### Bond Sales Hit 50 Percent Mark

Sales of Series E and H Savings Bonds in Rowan County for March totalled \$2,306 while sales for the year reached \$3,204 or 62.5 percent of the annual goal of \$7,500.

Kentucky's sales for March were \$4,633,078 while cumulative sales for the year totalled \$14,892,545 or 28.3 percent of the annual goal of \$52,600,000.

Nationally, the sales of Series E and H Bonds for the same month were 6400 million. The cash value of both series outstanding reached \$47,447 million or a gain of \$1.7 billion since the beginning of 1964.

### Three-Month-Old Terry Child Died In Mt. Sterling

Timothy Dale Terry, three-month-old son of Orville and Lucy Clik Terry, died Monday in Mt. Sterling.

Also surviving are two brothers and three sisters.

Funeral arrangements are being handled by the Well Furness Home, Reading Road, Cincinnati.

### Winkleman Child Claimed Friday In Lexington

Rosetta Winkleman, infant daughter of Paul and Wilma Dean Conley Winkleman, died Friday in a Lexington hospital.

Graveside funeral services were held at the Howard Cemetery in Elliott County Saturday.

Surviving are the parents, and two sisters, Paula Sue and Vickie Lou, both at home.

Other survivors include the paternal grandparents, Mr. and Mrs. Walter Winkleman and maternal grandmother, Mrs. Bessie Conley, all of Elliott County.

Stucky Funeral Home cared for the arrangements.

High School Girls DGWS Regional Track Meets, May 15-16; High School Girls Regional Tennis Tournament, May 23; High School Girls Open Golf Tournament, Louisville, May 29.

High School Girls DGWS State Track Meet, Field, Camp, June 6; High School State Tennis Tournament, Louisville, June 5-6.

A native of Mt. Sterling, she is the daughter of Mr. and Mrs. Travis Kariak.

She announced the following spring sports events for girls and women:

**Emergency Procedure At St. Claire Is Outlined By Staff**  
The medical staff of St. Claire Medical Center at Morehead said this week urged that the procedure for use of the emergency room at the hospital be observed. The staff has outlined steps to be taken below and urges that the following statement be clipped from this newspaper and pasted in the telephone directory for future reference.

**OUR FAMILY DOCTOR**  
PHONE NUMBERS

1. First call your family doctor. Discuss the problem with him (or her) at his office or the hospital.

2. If you cannot reach your family doctor, call the hospital, phone 784-4181. If the hospital cannot locate him (or her), you will be put in contact with the doctor on call. He may ask to see you at his office or the hospital.

3. In extreme, life endangering emergency, call your doctor first. If you cannot reach him (or her) call the hospital, 784-4181. The following information:

a. Name of patient  
b. Name of your family doctor  
c. The problem  
d. Your location and phone number.

Avoid bringing in patients unannounced. Don't make something little into something big.

### Track, Golf Get Attention At Breckinridge

Breckinridge Training School's active spring sports program came to a climax Saturday with the first invitational track meet to be held here in many years.

Teams from 10 high schools took part in the event with 35 points and Wurland finishing second with 51.

Other schools and their scores included Paintsville, 42; Boyd County, 29; Bath County 16; Breckinridge, 13; Raceland, 9; Sterling, 13; and Augusta.

Only first place for the local team was in the broad jump, when Michael Gulley jumped 19 feet, 7 1/2 inches to win the event. Gulley also finished second with 51.

Other schools and their scores included Paintsville, 42; Boyd County, 29; Bath County 16; Breckinridge, 13; Raceland, 9; Sterling, 13; and Augusta.

Only first place for the local team was in the broad jump, when Michael Gulley jumped 19 feet, 7 1/2 inches to win the event. Gulley also finished second with 51.

Other schools and their scores included Paintsville, 42; Boyd County, 29; Bath County 16; Breckinridge, 13; Raceland, 9; Sterling, 13; and Augusta.

Only first place for the local team was in the broad jump, when Michael Gulley jumped 19 feet, 7 1/2 inches to win the event. Gulley also finished second with 51.

Other schools and their scores included Paintsville, 42; Boyd County, 29; Bath County 16; Breckinridge, 13; Raceland, 9; Sterling, 13; and Augusta.

Only first place for the local team was in the broad jump, when Michael Gulley jumped 19 feet, 7 1/2 inches to win the event. Gulley also finished second with 51.

Other schools and their scores included Paintsville, 42; Boyd County, 29; Bath County 16; Breckinridge, 13; Raceland, 9; Sterling, 13; and Augusta.

Only first place for the local team was in the broad jump, when Michael Gulley jumped 19 feet, 7 1/2 inches to win the event. Gulley also finished second with 51.

Other schools and their scores included Paintsville, 42; Boyd County, 29; Bath County 16; Breckinridge, 13; Raceland, 9; Sterling, 13; and Augusta.

Only first place for the local team was in the broad jump, when Michael Gulley jumped 19 feet, 7 1/2 inches to win the event. Gulley also finished second with 51.

### 42-Cent Figure Recommended By Engineers

Morehead State College has never quoted a water rate of 42¢ per 1,000 gallons of water to the City of Morehead, although the city council has repeatedly passed a resolution to that effect.

The city council has passed a resolution to that effect, but the college source said, Utility Board members have said publicly that the college proposed a rate of 42¢ per 1,000 gallons, double the present rate.

Early in the negotiations, which began last fall, the college source said, Utility Board members have said publicly that the college proposed a rate of 42¢ per 1,000 gallons, double the present rate.

The college source said, with access to the college records mentioned a 42-cent rate was following a survey made for the school by an engineering firm. One member concluded that a rate of 42-45¢ would be necessary if the college were to expand its plant in order to care for increasing demands from the city.

However, after MSC fiscal officials surveyed the school's potential and position, it was determined that a rate of 35¢ per 1,000 gallons would be adequate to care for the cost of plant expansion and production of water through the enlarged plant. A city-placed college source said.

Apparently the question is a moot one, however, since the City Council is working to build its own water plant and use the Licking River at Farmington, eight miles away, as a source.

The decision, reached during a council session, which saw heated arguments over the city's governing body, was called "irrevocable" by one member of the city's official family.

Under present planning, Morehead will seek a Federal grant for 20 percent of the \$150,000 which engineers have estimated would be necessary to construct a transmission line and storage facility, and could be issued for the remainder of the cost.

Morehead now purchases water from Morehead State College under a contract which expires this summer. However, production capacity of the treatment plant has been taxed by growth of both the college and city.

It has become necessary to expand the plant in order to supply the needs of both.

The increase in rate proposed by the city's share of the plant expansion, necessitated, they say, by city use of the facility.

If the city did not use water treated by the college plant, expansion of the unit would not be necessary for possibly an other 10-12 years, it has been determined by college engineers.

Enlargement of the plant's capacity has been termed "absolutely necessary" because of the fact that it is now running at capacity. A drought of any kind would almost certainly result in water being rationed.

Changes made at Morehead's same fashion as did Flemingsburg's last year when the city was struck by a period of more than a 75 percent drop in water supply.

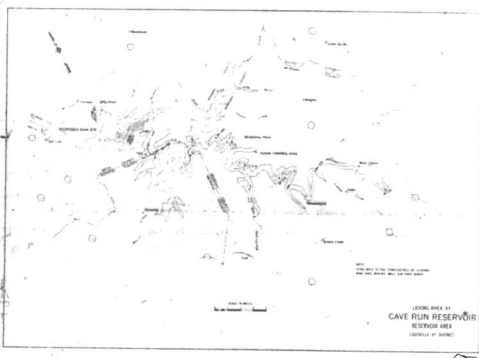
It was also the length of time which will be required for the city to eliminate its plans to construct its own plant.

Much concrete centers around the fact that Congress has not appropriated money for the program under which the city plans to apply for a Federal grant. Also uncertain is whether the city will be able to obtain a grant, and if so, how much of the cost it will cover.

Morehead is an area which can qualify for a 75 percent grant. However, in actual practice, the maximum amount is seldom obtained. For example, the city is in Lexington.

Funeral services were held Wednesday in Lexington.

Burial was in Lexington Cemetery.



## Revised Map Of Cave Run

The U. S. Army Corp of Engineers released at a hearing of the Appropriations Committee of the House of Representatives and the Senate in Washington last week this map of Cave Run Reservoir. It is up-dated from previous drawings reprinted in this newspaper. Cost of the project will be \$25,309,159 of which over \$11 million is earmarked for land acquisition and damages. Initial construction could be finished by 1968.

tion on Cave Run, located south of Farmers at the Rowan-Bath counties line is scheduled this year. U.S. engineers estimated the dam will be completed by 1969, but Congressman Carl D. Perkins said that it might be expedited and filled with water by 1968. Public hearings on Cave Run are scheduled, probably next month, in Morehead, West Liberty, Owingsville and Frenchburg.

## Facts And Figures About Cave Run Reservoir Given By U.S. Corp Of Engineers

Congressman Carl D. Perkins said today the completion date on Cave Run Reservoir might be advanced to 1968 under the battle against poverty program of President Lyndon Johnson.

Perkins said this would depend on how fast the U. S. Army Corp of Engineers could proceed. He emphasized the project has high priority and Congress would appropriate the funds as speedily as the engineers can spend the money.

Engineers have a 1968 completion target date. The final hearing on Cave Run was held before the House and Senate Appropriations Committees last Wednesday. A total of \$19,000,000 has been earmarked for fiscal 1964-65, and the amount engineers reported they need to spend the first year.

The U. S. Corp of Engineers also released, for the first time, these official statistics about Cave Run Reservoir—

Location—On Licking River, south of Farmers at

Bath-Rowan counties line of 174.6 miles above the mouth of 84 air miles southeast of Cincinnati.

Authorization—Authorized by Flood Control Act of June 22, 1936.

Purpose—Cave Run will operate as a unit of the comprehensive reservoir plan for the Ohio River Basin to effect reduction in flood stages at all points downstream from the reservoir. The reservoir will also augment natural low-flow conditions on the lower Licking River for purposes of water quality control and pollution abatement.

Coulties Affected—Bath, Menifee, Rowan and Morgan.

Total Storage—570,800 acre feet—14,019 acres above dam 838 square miles.

Dam—Earth and rock fill—maximum height 103 feet—length 2,820 feet—maximum base width 1,017 feet—quantity of fill, 3,765 cubic yards.—Congressman

Perkins said the height of the dam might be raised after construction starts and some conferences had been held in this respect.

Spillway—Uncontrolled, open-cut, 500 feet wide, through hill near right abutment, about 325 feet upstream from dam.

Outlet Works—Intake structure with gate controlled circular concrete conduit 35 feet in diameter leading to stilling basin near center of dam.

Relocations—Tentative relocations comprise portions of 325 feet upstream from dam.

Utilities and Cemeteries—(U. S. Engineers said that improved highways will be constructed around the entire reservoir. The government will not purchase right-of-way land.

Cost—Estimated preliminary and construction, \$12,780,000; land and damages, \$11,520,000; cost to June 30, 1963, \$90,841; Total for project \$25,400,000. (This figure would be changed if the dam is high-

Turn to page 11.

# WANTED ADS

**Classified Advertising Rates**  
 No Classified Ads Accepted After 12 Noon Tuesday  
 per word, first insertion  
 per word each subsequent insertion of same ad without any changes  
 Minimum charge (first insertion) \$1.00  
 Minimum charge (each subsequent insertion) 50¢  
 Display Classified Advertising, per inch 25¢  
 Entered as Second Class Mailing Matter at Post Office at Morehead, Ky.

**FOR SALE**  
 National cash register. Electric. Call 784-1312. c-5  
**BALDWIN PIANOS & ORGANS**  
 Best values in new and used instruments. Easy payment plan. 2100 Music Co., Ashland, Ky. c-1

**DOZER WORK**  
 Call Douglas Fornax, business phone 784-6147 or residence 784-4652. c-1

**LOOK-LOOK-LOOK**  
 Fabric City on Highway 60 just east of Morehead. In your headquarters for upholstery materials from Naugahyde to rayon fabrics and leatherette. All beautiful colors and while. Foam rubber and upholstery supplies in stock. Call and retail. Open Sundays. Phone 784-6555 anytime. c-1

**FOR RENT**  
 Two apartments and one house trailer. H. M. Meadows, phone 784-5377 or Mrs. Joyce Manning phone 784-7226. c-1

**HOME BAKERY**  
 For delicious homemade cakes and pies call or stop by The Home Bakery, opposite Dairy Mart, phone 784-5377. Birthday anniversary and wedding cakes made to order. c-1

**MOORE'S DRYWALL**  
 and Remodeling All types. Phone 784-5155. c-1

**ATTENTION**  
 If you are planning to install natural gas pipes and appliances get an experienced plumber to do your work. See or call Cecil Landrum, phone 784-6200. We have gas pipes of all sizes, hot water radiators and heating systems in stock. C. L. Landrum Plumbing Shop, Morehead, Ky. c-1

**BUILT-IN KITCHENS**  
 Plywood products, cabinets, cabinets and woodwork. Johnston Cabinet Shop, phone 784-4543. c-1

**FOR RENT**  
 Mobile home. Carpentry throughout, central air conditioning, 11x18 ft.; furnished; swimming. On large lot in town. Call 784-5329. c-1

**FOR RENT**  
 If you want to rent a trailer, see Clayton Adkins, Clearfield Road, Morehead. c-1

**FOR SALE**  
 1959 Liberty house trailer. Call 784-5385. c-1

**FOR RENT**  
 Apartments. Call 784-4213. c-1

**USED CARS**

'59 CHEVROLET  
 4-Door Sedan

'58 CHEVROLET  
 3-Door

'60 CHEVROLET  
 4-Door Sedan

'55 PONTIAC  
 3-Door Hardtop, Automatic Transmission

'54 OLDS  
 2-Door Hardtop

**USED TRUCKS**

'59 CHEVROLET  
 Tractor and Trailer

'56 FORD  
 Pickup - Utility Body

'52 INTERNATIONAL  
 1/2-Ton Pickup

'49 CHEVROLET  
 1/2-Ton Flat

All Used Cars Are Checked for Alignment on the New "John Boer" Visualizer!

**Midland Trail Garage**  
 "Pioneers in Rowan County Transportation"

Three-room furnished apartment. Reasonable rent. Phone 784-5255. c-1

**HOUSE FOR RENT**  
 Five rooms, bath. On Second Street. Phone 784-5631. c-1

**SPARE TIME INCOME**  
 Refilling and collecting money from new type high quality coin operated dispensers in this area. No need to qualify. You may have car. References, \$800 to \$1900 cash. Seven to twelve hours weekly. Can get excellent monthly income over full time. For personal interview write to: Box 4185, Pittsburgh, Pa. 15202. Include phone number. p-19

**THANKS**  
 I wish to extend my sincerest thanks to the scores of grief-stricken friends and neighbors who showed such kindness and sympathy during my recent stay in the hospital. The many, many cards and lovely flowers that helped me through my illness most pleasant will always be remembered. - W. T. (Bill) Gary. c-19

**FOR RENT**  
 Farm on Holly. Four-room house, electric and water. Contact Opal Thompson, 137 Arthur Avenue, Mansfield, Ohio. Call collect 524-8822. c-19

**HELP WANTED**  
 At Frosty's Restaurant. Apply in person at restaurant 9:00-11:00 a.m. and 2:00-4:00 p.m. c-1

**CARD OF THANKS**  
 We wish to thank the many friends and neighbors who were so kind to us during the illness and death of our beloved husband and father, Harvey Thornsbury. We would like to thank those who sent the beautiful flowers, Rev. Wm. Trent and Rev. Bennie Baldrige, the singers, the pallbearers and Stucky Funeral Home for their services. Your kindness will not be remembered. - Wife and son, Rachel and Danny Thornsbury. c-19

**CARPENTER WORK**  
 Remodeling, repairs, cabinet work. See P. M. (Pat) Johnson, Tolliver Addition, or call 784-4585. c-19

**IF YOU WANT TO BUY, Sell or Mortgage REAL ESTATE**  
 See Our Sales List For A  
 • BUSINESS PROPERTY  
 • FARM  
 Licensed and Bonded Real Estate Broker  
 Authorized Mortgage Loan Broker For The Prudential Insurance Company of America.  
 Phone 784-5385  
 Morehead, Kentucky c-1

**FOR SALE OR TRADE**  
 40-Acre farm. Modern house, good water, 61 tobacco base, 30 miles from Morehead. Phone 784-4921 after 6 p.m. c-1

**FOR SALE**  
 Two black wrought iron folding twin beds with mattresses. In excellent condition. Call Mrs. Nelson Gore, phone 784-5855. c-1

**FOR RENT**  
 Storage room, 24 x 33 ft., with garage door. Main Street. Call 784-4710 or 784-7220. c-1

**FOR SALE**  
 Jones Used Clothing Store, West Main Street, Morehead, Ky. See or call Edna Jones, phone 784-5346. c-1

**FOR RENT**  
 Four-room house with bath, carpet; one 3-room furnished apartment with bath. Call 784-5266. c-1

**FOR RENT**  
 Two-bedroom house trailer in Thomas Addition. Close to School, factory. Utilities paid. Junior Pettit, phone 784-5372. c-19

**FARM FOR SALE**  
 61 Acres, 7-room house, tobacco and stock barn. On blacktop road, school bus. Fruit and milk routes. See Smith Newman, Route 2, Hillboro, Ky. p-19

**ATTENTION MD'S AND BUSINESSMEN**  
 Capable young graduate nurse moving to Morehead. Proficient in ERG, BMR, X-Ray, CBC, typing, dictaphone, etc. Permanent position in doctor's office or industrial nursing preferred. Will consider business office. Best of references. Available for interviews Saturday, May 23. Please send inquiries stat c/o Rev Howard Buckner, P. O. Box 412, Morehead. This ad will appear today only. c-19

**FOR SALE**  
 Newly rebuilt 3-bedroom house with bath, gas furnace. One acre and will tobacco base. On US 60 across from Upper Tygart School. Clifford Akers Allen, Ky., phone TR 4214. p-21

**LOGIC**  
 The reason a lot of people can't make out news that they spread out too much.

# State Quietly Laying Plans To Enforce Strip-Mine Law

Quietly and methodically, the State Department of Conservation is laying the groundwork to strictly enforce the new law slapping penalties on operators on strip and sugar mining in Kentucky.

Robert Montgomery, deputy commissioner in charge of enforcing the law which goes into effect June 16, has been active in these efforts.

He is conducting a series of meetings to discuss the law with mine operators in Eastern Kentucky. Thus far, some 25 to 30 operators have turned out for each meeting in Pikeville, Prestonsburg, and Middleboro.

He is expanding the field force of mining inspectors in Eastern Kentucky, and is making their standards for employment.

He made a trip to Pennsylvania to study that State's strip mine law, purported to be a model in the eyes of conservationists.

He went to Roanoke, Va., for a strip-mine conference, sponsored by the Council of State Governments and the Virginia Conservation Committee.

During May, Montgomery has scheduled a series of meetings with supervisors of the coal conservation districts affected by strip mining. Under the law, the state must consult with these districts before approving strip mine plans required from operators.

"As Gov. Breathitt has pointed out," Montgomery said, "we intend to carry out the exact letter of the law. But many people have the mistaken idea that stripped lands can be re-vegetated immediately.

"The state is seeing miracles overnight. The reclamation of disturbed land means that trees and vegetation will have time to grow. Another disturbance is that stripping creates soil conditions new to conservationists."

There has been some confusion, too, Montgomery said, about stream pollution as it relates to underground mining in Eastern Kentucky. Streams blackened by coal washers at these operations come under the jurisdiction of Kentucky Water Pollution Control Commission - not the Division of Reclamation and Reclamation, he noted.

Montgomery urged all violations to report any citations of the law to the mine manager. Here are its main provisions:

All grading of stripped areas must be kept current with the operation; reclamation must be completed in one year unless conditions do not permit it.

Operators must post bond on access roads and include them in reclamation plans (the old law did not include access roads).

Applicants for a permit must certify that no one in the community has ever violated the strip mine law or had a bond forfeited.

An operator may contract with the State to his satisfaction (not in the old law).

The State can use State and/or Federal money to re-claim land not under bond; that is, land stripped before laws were enacted.

Acresage fees paid by operators are increased from \$15 to \$20 per acre.

Maximum performance bonds of operators are increased from \$250 to \$500 per acre and the total minimum bond from \$1,000 to \$2,000.

# Breck Students To Participate In Berea Fair

Breckinridge Training School will participate in the fifth annual Central Kentucky Student Craftsmen's Fair to be held at Berea College May 8 and 9, officials have announced. Berea College and Eastern Kentucky State College, Richmond, are sponsors of the Fair.

Purpose of the event is to promote better industrial arts education programs in Kentucky secondary schools. Some 1,000 high school projects, along with twenty-five commercial exhibitors showing their latest processes, products, and machines, will be featured in the Danforth Industrial Arts Building exhibit. Larry N. Dales is industrial arts instructor at Breckinridge.

# Breck Girls Ist In Triangular Track Event

Breckinridge Training School's girls track and field team, coached by Mrs. Max Ward, outpointed Paris and Mason County in a triangular meet here last Wednesday. Only five points separated the winner, Breck, from third place Mason County. The Eaglettes tallied 55 points, Paris 53 and Mason County 50.

Top performer for Mrs. Ward's first-year team was Sheila Murphy who gathered 19 points with a first place in the broad jump, a first in the 400-yard run and fourth in the running broad jump.

Vanda Botts scored 10, placing second in the 75-yard dash, second in the standing broad jump and a tie for second in the running broad jump.

Mary Jane Hurt tallied eight points. But Fred S. Marsh Ferguson 6, including a first place in the 220-yard run, Sally Caudill gathered 3, Terry Holly 3, Pam Vencil 3 and Mary Jo Elam 2.

# Public Asks Government Food Study

In testimony before the Senate Commerce Committee recently, Farm Bureau went on record favoring S. J. Resolution 71 to establish a National Commission on Food Marketing to study the food industry "from the farm to the consumer."

Proposed by President Johnson and his administration, the Commission would try to determine - among other things - if the farmer is getting a fair reward for producing food to feed the people.

Testifying in behalf of Farm Bureau, Legislative Director John C. Lyons pointed out that the organization supports programs designed to deliver to the consumer the highest quality food and fiber, competitively priced.

"We believe," he said, "that net per family farm income can only be increased over the long run if we strengthen the marketing system. We support the principles embodied in S. J. Resolution 71."

The Farm Bureau official noted that much impetus for the hearings has been generated by the decline in beef cattle prices and suggested what might be two primary causes of the decline: 1. Increased interest in the total supply of production of produce, meat and poultry. He went on to observe that the present high level of domestic meat production likely reflects the use of well-known cattle and hog production cycles, evolutionary changes in poultry production methods, and the government's feed grain sales policy which encourages heavy grain feeding.

While Farm Bureau is enthusiastic in support of the resolution, it is quick to caution that a comprehensive study of food industry can be helpful only if such a study is made objectively and is conducted by the best qualified men available.

# Soil Conservation District Sets Annual Meeting

By Donald B. Nelson

Today (Thursday) at 7:30 p.m. the Rowan County Soil Conservation District will hold its annual "Cooperator Meeting" at the Rowan County High School Cafeteria. Any person who is interested in coming to the meeting, whether they are a landowner or interested in soil conservation, will be welcome to attend.

Master Conservationists of level of domestic meat production which they have carried on their conservation plans. Other awards will be presented such as the soil conservation award winners in the county and the student that has sold the most turkey in Rowan County during the spring planting.

Foster Adams of the Division of Soil and Water Resources will be the guest speaker. Refreshments will be served.

# WHAT FOR?

It's rather puzzling that Rockefeller continues to run

**THE IMPOSSIBLE**  
 Possibility is craching down on a cosmetic concern for claiming one of its products will smooth out wrinkles. It does seem purchasers of this product should have known that it's impossible to blot out Pauler Time's footsteps.

# ALL NEW McCULLOCH ONE/53



**FAST COMPACT LIGHTWEIGHT**  
 with built-in dependability

Tackle the toughest jobs and do them easier. Direct cutting, all position operation, famous McCulloch engineering - "small size, big production."

STOP IN TODAY!

# MONARCH SUPPLY STORE

**A NEW HAT... BUT NOTHING BUILDS MORALE LIKE MONEY IN THE BANK**

Want to get a real "head start" toward that new home, car or the youngsters' education? Enjoy the security of knowing your money is on-the-grow in a personal savings account here.

Drop in today to open your savings account, then get into the habit of making regular deposits from every paycheck. We pay liberal interest.

# 4% FIRST FEDERAL Savings And Loan Association Of Morehead

MAIN STREET MOREHEAD, KY.

Office Open Six Days A Week.

# PUBLIC ACTION SATURDAY, MAY 16 - 2 P.M. (EST)

These 5 rooms and bath red brick home, located on a 97'x100' lot adjacent to the city limits and almost in sight of Morehead State College, has 2 bedrooms, utility room, a front porch and plenty of closet and storage space. It has hardwood floors, storm windows and doors, of good construction. The lot is newly decorated inside. The lawn is beautifully landscaped. Seen only by a subscription.

TERMS: 10% day of sale - balance on delivery of deed. This property will take a substantial loan.

OWNERS: Mr. and Mrs. Asa Nickell.

# H. H. LACY REAL ESTATE & DEVELOPMENT CO.

H. H. LACY - Licensed and Bonded Auctioneer  
 GLADYS M. LACY - Apprentice Auctioneer

406 Wilson Ave. - Phone 784-5750 - Morehead, Ky.



# Annual Fine Arts Week Brings Well-Known Artists

The annual Morehead College Fine Arts Week started Sunday, May 3 and will run through Saturday. Several nationally known figures as well as performing groups on the Morehead campus will be featured.

Featured individuals include C. Kermit Ewing, professor of art at the University of Tennessee, and Keith Brooks, Associate Professor of Speech at Ohio State University. Campus groups which will perform include the chamber orchestra and the opera group.

During spoke at 2:30 p.m. on Sunday, May 3, in the art gallery. Twenty-five of his paintings will be on exhibit this week.

The chamber orchestra, under the direction of James Peacor, presented an evening of chamber music featuring works by Ludwig van Beethoven and Franz Schubert on Monday evening, May 4, at 8:30 in Baird Music Hall.

Brooks will present a "Reading Hour" on Thursday evening, May 7, in the Baird Music Building at which time he will read some of the works of James Thurber as well as humorous readings on college-life.

The drama and opera departments have combined to present "An Evening of Contemporary Opera" on Friday, May 8 and Saturday, May 9. The 8:30 production in Baird Music Hall will feature "Riders to the Sea" by Ralph Vaughan Williams and "Comedy on the Bridge" by Bohuslav Martinu. James Ross Beane is director.

The chamber orchestra will support the 12 Morehead students who are performing.

Dr. J. E. Duncan, Chairman of the Division of Fine Arts, said, "We are pleased with the reception our Fine Arts Week has received in the past and we sincerely feel that we again have an outstanding week of activities."

Some of the works of James Thurber as well as humorous readings on college-life.

The drama and opera departments have combined to present "An Evening of Contemporary Opera" on Friday, May 8 and Saturday, May 9. The 8:30 production in Baird Music Hall will feature "Riders to the Sea" by Ralph Vaughan Williams and "Comedy on the Bridge" by Bohuslav Martinu. James Ross Beane is director.

The chamber orchestra will support the 12 Morehead students who are performing.

Dr. J. E. Duncan, Chairman of the Division of Fine Arts, said, "We are pleased with the reception our Fine Arts Week has received in the past and we sincerely feel that we again have an outstanding week of activities."

# Little League Play To Open Saturday

Morehead's Little League baseball season will get underway Saturday, starting with a parade led by the Rowan County High School band, and the season's opening game.

The parade down Main Street will start at 1 p.m. and will make its way to Little League Park near RCHS where the Reds will meet the Giants to initiate 1964 season action.

Sponsored by the Kiwanis Club, the Little League will play a 45-game schedule in addition to playoffs for first and second half championships.

Single games start at 5 p.m., doubleheaders at 4:30 p.m. Postponed games will be played on Saturdays, with single games scheduled for 10 a.m. and doubleheaders beginning at 9 a.m.

The complete schedule for the season:

- May 9 - Reds vs. Giants; May 11 - Dodgers vs. Yankees; May 12 - Indians vs. Tigers; May 13 - Tigers vs. Yankees; May 14 - Indians vs. Reds; May 15 - Red shrimp, flounder, and ocean perch filets all are heavier in supply than last year.

# Olive Hill Man Named Manager Of Wiley Park

Lowell L. Baker, 34, superintendent of Greenho Lake State Park, Greenup, has been named general manager of Jenny Wiley State Park, Prestonsburg, to replace Perry Cole, acting manager, who will return to his permanent post as accommodations officer in the central Parks Department office in Frankfort.

**MAY BIRTHDAY?**

EXPIRES BIRTH MONTH YOUR DRIVER'S LICENSE?

Published as a public service by the state.

# TAXPAYERS' NOTICE

Notice is hereby given that the Rowan County Board of Equalizers will sit for one week, beginning Monday, May 11, to hear any protests concerning the assessment of real or personal property in Rowan County for 1964. Members of the Board of Equalizers will be in the office of the Rowan County Tax Commissioner during normal working hours from May 11 through May 15.

**JUANITA WILSON**  
Rowan County Tax Commissioner

# Beef Called 'Best Buy' During May

Beef heads the list of plentiful foods again this month, according to Mrs. Martha Owens, acting University of Kentucky Extension specialist in marketing and consumer education.

Watch for beef "features" this month, as a good selection of beef bargains probably will be available, she suggests. Now is the time to buy beef for immediate use or for freezing to use later, since prices will rise in summer when supplies are less plentiful. May is Ground Beef Month, too, so you can expect to find good buys of this economical meat during the month.

Pork supplies are expected to be less than a year ago, but good buys still will be available. Bacon will be among the economical buys in pork this month.

Some of the fish and seafood specials will be crabmeat, hal-

but shrimp, flounder, and ocean perch filets all are heavier in supply than last year. Turkey also will be a good buy in May; supplies are expected to be about a fourth greater than last year.

You can serve plenty of salads in May. Mrs. Owens notes: Top quality fresh salad greens, especially head lettuce, escarole, endive, leaf and Bibb lettuce, and watercress, now are coming to market and prices are decreasing. Homegrown field leaf and Bibb lettuce will arrive at local markets this month, too. Salad oils, mayonnaise and salad dressings - to add zest to your May salads - also are included on the list of plentiful foods.

**BRONZED BABY SHOE SPECIAL**

Give Him a Father's Tray for Father's Day

It "POPS THE QUESTION" - here's your answer! His baby's first shoe beautifully crafted in solid metal (jazz) soft and wrinkle proofed leather. And mounted on a handsome matching metal dresser tray.

(P.S. - it's an ashtray, too!)

REDUCED TO \$6.99

Style #20 Reg. \$7.95

**3 WEEKS ONLY** ORDER NOW FOR FATHER'S DAY

ALSO REDUCED

Style #2 Oval Miniature Frame. He'll be so proud of this - on his desk or in his den.

Reg. \$13.95 bronze NOW \$12.49

Genuine Engraving only 10c per letter

**BRONZED SHOE**

Bring Shoes in NOW - Sale Ends May 29

# TIRES SAFE? LET US LOOK!



See your Ashland Oil Dealer for... the biggest tire bargains in town!

Chances are you'll be doing a lot of driving during the next few months, and the big question is... ARE YOUR TIRES SAFE? National surveys indicate that six out of 10 motorists are driving on unsafe tires. There's only one way to tell whether your tires are safe, and that's by a thorough safety inspection by a trained tire expert—like your Good Neighbor Ashland Oil Dealer.

He'll check your tires for air pressure and tread wear. He'll carefully inspect them for safe driving... and give you an honest appraisal of their condition. If you should need new tires, he can equip you with nationally-advertised, nationally-guaranteed tires... at special low prices.

For carefree driving this spring and summer, drive in to the nearest Ashland Oil Dealer... the friendly man with the better brand. He's interested in your safety.

**BUY TIRES NOW... PAY LATER!**

With Ashland Oil's convenient TBA budget plan you can buy your tires now... charge them on your credit card and take up to six months to pay—with no money down and no carrying charge.

If you don't have an Ashland Oil credit card ask your Ashland Oil Dealer for an application.

**ASHLAND OIL & REFINING COMPANY**

**Ashland OIL PRODUCTS CREDIT CARD**

ASHLAND OIL & REFINING COMPANY

0012345678

JOHN L. CUSTOMER

111 FIFTH ST. ANY TOWN, USA

SEE NEAREST LIST FOR CONDITIONS OF USE

**Ashland OIL PRODUCTS**

# Morehead Girl Cast In MSC 'Short Opera'

Mary Bragg, a Morehead State College Junior from Morehead, will perform in one of two short operas on the campus on May 8 and 9.

The drama and opera departments of Morehead State College are jointly presenting "Riders to the Sea" by Ralph Vaughn Williams and "Comedy on the Bridge" by Bohuslav Martinu.

— SAVE WITH STONE — SAVE WITH STONE —

**A CHOICE SELECTION OF CARS AND TRUCKS FOR MOST ANY NEED**

**1963 FORD 1/2-TON PICKUP**  
Custom cab, radio and heater, 14,000 actual miles. Cost over \$2,500.00 new. Our Wholesale Price...  
**\$1,695.00**

**1960 BUICK LeSABRE**  
4-Door hardtop, automatic, power steering, power brakes, new nylon tires, radio and heater. A local car in tip-top condition.  
**\$1,395.00**

**1960 PLYMOUTH FURY**  
4-Door hardtop, automatic, radio and heater, power steering and power brakes. Extra sharp in every way. Guaranteed one owner. See to appreciate.  
**\$1,195.00**

**1959 FORD GALAXIE**  
4-Door, automatic, power steering, power brakes, radio and heater. This is an exceptionally clean car that we guaranteed one local owner.  
**\$995.00**

**1954 INTERNATIONAL TRUCK**  
2-Ton heavy duty, 3-speed, new bed, excellent tires. Runs out A-1.  
**\$595.00**

**1954 CHEVROLET PICKUP**  
1/2 Ton, motor overhauled in our shop. Excellent in every way.  
**\$345.00**

**MEMBER G GUARANTEED WARRANTY USED CAR WARRANTY PLAN**

"SAVE WITH STONE"

**STONE PONTIAC-BUICK-GMC, INC.**

Phone 784-4937

Used Cars U.S. 60 East — Morehead, Ky.

— SAVE WITH STONE — SAVE WITH STONE —





# Health 'Blitz' Shows Fifth Of Floyd Countians Ailing

More than one-fifth of the 1,291 Floyd Countians examined by a team of federal, state and county health workers were found to have one or more health defects requiring referral to physicians, Stephen G. Edelstein, M.D., coordinator of the State Department of Health project, announced today.

Dr. Edelstein said the series of medical tests given at the Floyd County Health Department from Mar. 23 to Apr. 16 "turned up basic health problems that will help public health personnel pinpoint what areas of public health should be given priority in planning future programs there." Floyd Countians

in the first of 18 southeastern Kentucky counties to be tested for the disease detection project.

Preliminary results of the medical tests show that for each child referred to a physician for further diagnostic tests and treatment an average of one health defect was found. For adults referred, the average was 1.5 defects.

Of the 746 six-year-olds examined, 128 (or 17 percent) were referred. Twenty-nine percent of the 453 adults participating in the medical tests were advised to seek further medical aid.

Referrals of children to physicians were due to 37 cases of intestinal parasites, 16 vision problems, 12 hearing defects (some with middle ear infections which, if not corrected, will result in a hearing loss), 11 anemia conditions, nine cases of nine with kidney disorders, eight with skin conditions ranging from warts and ringworm to pruritis and eczema, and six asthmatic and bronchial conditions.

Four children with heart conditions were found including two with congenital heart defects (one previously unknown). Cleft palate was the problem of one of four children with defects in defects. Suspected bone defects including club feet appeared in four cases. Three tumors of the jaw or roof of the mouth were found. Two children with epilepsy and six with miscellaneous conditions.

Referral of adults included these: 22 women with female disorders requiring further diagnosis and five pregnant women without medical supervision. Located were 24 vision difficulties, 14 hearing defects, 12 kidney disorders, six ulcers, six cases of rectal bleeding, and 10 cases of anemia.

Blood pressure was found in 11 adults, nine with heart conditions, nine with diabetes, eight with possible thyroid disorders, seven suspected of syphilis, and four with pulmonary disorders.

Six cases each of anxiety, obesity, and seminary-type disturbances were noted.

Four tumors (three of the mouth and one of the head) and two cases of known cancer were found. Also referred were two cases each of epilepsy and bone defects.

Fifteen were referred for miscellaneous conditions including possible gall bladder problems, sinusitis, parasites, neuritis, arteriosclerosis, and varicose veins.

Estimates of dental health problems show that 90 percent of the 1,201 persons "referred" had decayed teeth and were in need of dental care.

A fourth of the children examined received their first toothbrush at the screening clinic.

Twenty percent of the adults were found in need of full dental services and many other needed partial ones. Three-fourths of the adults had gum diseases, with 15 percent having progressed to definite pyorrhea.

Blood samples taken during the project were analyzed for syphilis at the State Department of Health and identified 25 to type at the University of Kentucky Medical Center.

Dr. Edelstein explained that blood samples taken during the project are being saved for use in a serum bank. A serum bank, he said, is a kind of library of blood samples that can be tested to determine the prevalence of various infections at the 18-county area.

He said he hopes that eventually blood tests can be run on the serum.

Dr. Edelstein said the results of the Floyd County tests would be evaluated further upon completion of the one-year project.

Similar tests will be conducted in Leslie County May 4-30, 16 in Breathitt County May 25 to June 4.

The project is designed to determine what the region's health needs are and to help the residents get needed health services. The one-year health project will provide more than half a million dollars in aid to the area.

The U. S. Public Health Service plans to evaluate this project to determine whether or not the screening method used in the area might be applicable in other regions.

Dr. Edelstein is one of five USPHS physicians assigned to the special Kentucky State Department of Health project. Other USPHS personnel include four registered nurses, two dentists, and one health educator. Working with them are State and county health department personnel and aides employed from the counties.

The 18 counties participating in the disease detection project are Bell, Breathitt, Clay, Floyd, Harlan, Jackson, Knott, Laurel, Lee, Leslie, Letcher, Martin, Owsley, Perry, Pike, Wayne, and Wolfe. These counties cover an area of 4,925 square miles and have a population of 432,000.

March 4 Governor Edward T. Breathitt welcomed the federal health workers to Kentucky and presented them with Kentucky colonelies.

A pilot program of forest fire defense training in rural areas is under way in 27 Kentucky counties not covered by the State Conservation Department's organized fire protection provided by the Forestry Division.

Conservation Commissioner J. O. Matlock said Kentucky is one of five states in the nation to be included in the new training program, financed entirely by the Federal Government through the U. S. Forest Service and U. S. Civil Defense Agency.

The main objective of the program, he said, is to provide training and organization of various volunteer groups to be used in the event of emergency in these 27 counties.

Gene L. Butcher, State forestry director, said the program has been granted an initial \$80,000 allotment to finance the first three months of operation from Apr. 1 to July 1. He expects it to be continued for three to five years, and estimates it will become a \$300,000-a-year operation.

The counties that will be affected by the pilot program are primarily in the Bluegrass area or on the fringes. They have not been brought under State protection, Butcher stated, because they are "law priority" areas where the danger of brush or forest fire is not as great as in heavily-wooded sections of the state.

The 27 counties are Boone, Bourbon, Bracken, Campbell, Carroll, Clark, Fayette, Franklin, Gallatin, Grant, Harrison, Henry, Jefferson, Jessamine, Kenton, Mason, Mercer, Nicholas, Oldham, Owen, Pendleton, Robertson, Scott, Shelby, Spencer, Trimble and Woodford.

Although Simpson County is not presently one of the fire-protected counties, it is included in the pilot program because the Forestry Division intends to bring it under the regular protection program Jan. 1, 1965, Butcher said.

Other states included in the pilot program are Colorado, Oregon, Florida and Missouri. Butcher said Kentucky was selected because of the extensive fire control work being done in the state, and to help prepare the State Forestry Division to eventually bring these 27 counties into the organized fire protection program.

"This program will allow us to conduct all the preliminary planning needed to bring these counties into the State program," he said.

Butcher said that the division hopes to have every county in Kentucky under three years of protection within three years, but added that the pilot program would not necessarily end because there would still be need organization and training to be carried out.

# Forest Fire Defense Plan Effective In 27 Counties

Other states included in the pilot program are Colorado, Oregon, Florida and Missouri. Butcher said Kentucky was selected because of the extensive fire control work being done in the state, and to help prepare the State Forestry Division to eventually bring these 27 counties into the organized fire protection program.

"This program will allow us to conduct all the preliminary planning needed to bring these counties into the State program," he said.

Butcher said that the division hopes to have every county in Kentucky under three years of protection within three years, but added that the pilot program would not necessarily end because there would still be need organization and training to be carried out.

and Elliottville at 8:35 a.m.; North Fork—leaves Adams-Davis school at 7:30 a.m.; Walkers at 8 a.m.; Cranston at 8:20 a.m.; and Johnson at 8:45 a.m.; Sharkey—leaves Sharkey at 8 a.m.; Little Brushy at 8:15 a.m.; and Big Brushy at 8:50 a.m.

Farmers—leaves J. D. Demore's at 7:15 a.m.; Farmers School at 8:30 a.m.; Upper Lick—leaves group leaves Alfrey Church at 8 a.m.

In addition to Saturday's speech and demonstration program, other 4-H events scheduled in the near future include a talent show to be held May 12 at 7 p.m. in the Breckinridge Training School auditorium and 4-H Week, which is set for May 31-June 8.

## CHECK YOUR INSURANCE!

Be sure it's paid up before you see THE HORROR OF PARTY BEACH and THE CURSE OF THE LIVING CORPSE. Be sure to have your FRIGHT RELEASE absolving the theatre of all responsibility for death by fright. You may obtain it as you enter the Trail Theatre.

## BANK BY MAIL... A BOON TO BUSY MOTHERS



We've remembered Mom with a bank-by-mail service that's a real boon for housewives and other busy people.

Use our bank-by-mail service to make savings deposits when the weather's bad or you find it inconvenient to drop in during normal banking hours.

## THE CITIZENS BANK

"Grow With Us"

OPEN A SAVINGS ACCOUNT TODAY

- Checking Accounts
- Savings Accounts
- Loans

MEMBER FEDERAL DEPOSIT INSURANCE CORP.

USE OUR NIGHT DEPOSITORY

## THE CHURCH OF CHRIST

MEETS AT

225 Second Street  
MOREHEAD, KENTUCKY

DON FLATT, Minister

SUNDAY SCHOOL 10:00 A.M.  
SUNDAY WORSHIP 10:35 A.M.  
SUNDAY EVENINGS 4:30 P.M.  
WEDNESDAY EVENINGS 7:00 P.M.

## Special Values for FRIGIDAIRE

We're going all out to beat our last year's sales record—with values you just can't afford to miss. **HURRY!**

**Feature-Packed FRIGIDAIRE Space-Saver!**

- Big 63-lb. freezer chest.
- Big chill drawer for fresh meats, colds and work space.
- Full-width Hydrator for vegetables.
- Deep shelf storage door holds lots more!

Model D-12-64  
17.00 cu. ft., 4 colors or white!

**\$199.95**  
With Trade

**Thriftest Full-Size FRIGIDAIRE Range!**

- Big even-heat oven holds holiday turkey.
- Roomy 40" width—lets of cooking and work space.
- 2 storage drawers—and easy-cleaning features from top to floor!

Model RS-10-84  
Sawcreek white only.

**\$199.95**  
With Trade

**Budget Buy! FRIGIDAIRE Soak Cycle Washer!**

- Soaks clothes better than overnight soaking!
- Underwater Action Zone helps get big 12-lb. loads really clean.
- Plus fresh running water rinses, automatic lint removal.

Model WDA-84  
4 colors or white!

**\$189.95**  
With Trade

## MOREHEAD DRIVE-IN THEATRE

Morehead, Kentucky

Phonics "For The Fighting Week"

**SATURDAY**  
May 2  
— 2 Big Color Features —  
**"Cattle King"**  
In CinemaScope & Color  
Starring Robert Taylor, Joan Caulfield and Larry Gates

**"Summer Holiday"**  
In CinemaScope & Color  
Starring Cliff Richards and Laurie Peters.  
"Hear 16 New Songs!"

**"War Hunt"**  
John Saxon and Robert Redford

**SUNDAY-MONDAY**  
May 10-11

**WALLPAPER THE DAYLILIES OUT OF EVERY CORNER YOU'VE EVER SEEN!**

**JOHN MAURER WAYNE-GARRA McCLINTOCK!**  
BEST GUNSMAN EVER!  
TECHNICOLOR-PANAVISION  
Released May 1962 82123

**TUESDAY-WEDNESDAY**  
May 12-13  
**"Rampage"**  
In Color  
Starring Robert Mitchum, Elia Martiniello and Jack Hawkins

**WEDNESDAY IS FAMILY NIGHT — ONE CAR LOAD**  
\$1.40

**THURSDAY-FRIDAY**  
May 14-15  
**"The Secret Passion"**  
Starring Montgomery Clift, Susannah York, Susan Kohner and Larry Parks

## DEMONSTRATION, SPEECH EVENT Set By 4-H

Rowan County's 4-H Club members will get together here Saturday for their annual speech and demonstration at 10 a.m. which will include a style show.

To be held at the Morehead Grade School, the event will begin at 9 a.m. and will be concluded with the style show.

Bus trips bringing students to the affair will leave on this schedule:

Haldeman—8:15 a.m.; Clearfield—8:45 a.m.; Elliottville, leaves Poplar Grove at 7:30 a.m.; Sand Gap at 7:45 a.m.

## HONOR ROLL BOWLING

At Morehead

**Saturday Jr.**

Team	W	L
Peoples Bank I	51	8
American Health	39	9
Peoples Bank II	37	18
C. Roger Lewis	30	19
Lee Clay I	30 1/2	19 1/2
Clean Towel Service	30 1/2	18
Federal Savings	28	21
Lee Clay II	25	33
Claude Glover Signs	24	27
Imperial Cleaners	18 1/2	17 1/2
W.M.O.R.	13	25
Tigers	5 1/2	23

High single, Ronnie Jackson (107); high team, Peoples Bank I (473); high series, Ronnie Jackson (481); high team series, Peoples Bank II (1283).

**Shooters**

Team	W	L
Leon Funeral Home	26	16
Pepsi Cola	23	39
Helwig Service Sta.	17	25
Carr Lumber Co.	18	24
High single, Gertie James (170); high team, Pepsi Cola (485); high series, Gertie James (485); high team series, Pepsi Cola (319).		

**Friday Kat**

Team	W	L
Caudill Ashland	78	44
Commonwealth	78	44
Lois & Dexter	75	45
Terrace	72	48
WRA	70 1/2	49 1/2
Johnson's	67	53
Pepsi Cola	65	55
VI's	64	56
R. L. Wells	56 1/2	63 1/2
Style Shoppe	47	79
Nashville	25	89
Tastee Freez	25	84
High single, Naomi Summers (283); high team, R. L. Wells (787); high series, Naomi Summers (585); high team series, Lois & Dexter (2801).		

**8:30 Scratch**

Team	W	L
Lewis & Hundley	37	3
Rucker & Laycock	32 1/2	7 1/2
Armstrong & Casle	23	17
Burns & Gardner	22 1/2	17 1/2
McBreyer	21	18
Skinny Ones	21	18
Uni & Black	18	22
Snipes & Statham	18	22
Judy & Doyle	13	27
Collins & Flood	0	24
High single, Jeff Laycock (307); high team, Snipes & Statham (371); high series, Jeff		

**7:30 Scratch**

Team	W	L
Hundley & Padgett	31	5
Timberbeats	23	13
Sorethumbs	22	14
10th Framers	21	15
Bams	18 1/2	17 1/2
Bunks	14 1/2	19 1/2
Toots	14	19
Nuts	14 1/2	15 1/2
High single, Tim McBrayer (232); high team, Hundley & Padgett (1146); high series, Wayne Hundley (618); high team series, Hundley & Padgett (380).		

**Team (Rise Runner)**

Team	W	L
Pierce Variety	25	10
Furniture Mart	24	21
Jarrett Mamm	21	24
Best Coat Machine	20	25
Pepsi Cola	19	26
American Health	16	29
High single, John Anderson (219); high team, Pierce Variety (807); high series, Paul Adams (554); high team series, Pierce Variety (2811).		

**Independent**

Team	W	L
Midland Trail Gar.	65	31
Super Flash	57	39
Ky. State Police	54	42
Garage	41	55
Commonwealth	38 1/2	57 1/2
Life Ins.	38 1/2	57 1/2
High single, John Anderson (219); high team, Pierce Variety (807); high series, Paul Adams (554); high team series, Pierce Variety (2811).		

**On CUBAN MISSILES**

The United States is trying to get Soviet Premier Khrushchev to keep a restraining hand on Fidel Castro when he gives the Cuban leader control of a modern arsenal of anti-aircraft missiles in the near future. At the same time the United States says it will continue to fly reconnaissance planes over Cuba and warns against any interference.

## What's the pitch on Methyl?



It's an important gasoline discovery! Methyl steps up octane performance so effectively that it stops power-wasting knock better than any other antiknock compound. Methyl spreads more evenly throughout all cylinders of your engine, stands up under extreme temperatures. And it's in Standard Gasolines (Crown and Crown Extra) ... at no increase in price! Another important way that we take better care of your car.

**STANDARD OIL**

# Methyl

...now in Standard Gasolines—at no increase in price!

**E. C. DeHART, AGENT — MOREHEAD**

# SOCIETY

### MISS KAY FANNIN TO WED AIRMAN STIDOM

Mrs. Verma Fannin, Morehead Route 1, announces the engagement and approaching marriage of her daughter, Kay, to A. D. Larry Stidom, son of Mr. and Mrs. Winford Stidom, Morehead Route 2. The wedding will take place May 17.

### SMEDLEY-MYNNHER ENGAGEMENT ANNOUNCED

Mr. and Mrs. Martin Smedley of Clearfield announce the engagement of their daughter, Lucille, to Mr. Larry Mynher, son of Mr. and Mrs. Fred Mynher, Morehead. No date has been set for the wedding.

### CYNTHIA BLANTON HAS PARTY FOR CLASSMATES

Miss Cynthia Blanton entertained last Friday evening with a patio party at the home of her parents, Mr. and Mrs. Emmett Blanton, RFD 2, Morehead. The twenty-eight guests attending included Miss Blanton's eighth grade classmates at Tilden Hoge Elementary School, Cranston.

### CHRISTIAN CHURCH DSF HOLDS RETREAT AT PARK

The Disciple Fellowship of the First Christian Church of Morehead held a retreat Saturday and Sunday at Carter Caves State Park.

Those attending were Kay Conley, Robert Cline, Anita Brammell, Jack McAllister, Cook, Betty Schindel, Leo Ralph Huck, Roger Batson, Chip Whittier and Mrs. Warren Cooper.

### DELTA KAPPA GAMMA MEETING HELD SATURDAY

The Epistol Chapter of Delta Kappa Gamma sorority met Saturday at Doran Student House on the Morehead State College campus.

Following committee meetings during the morning, a luncheon was served at noon. The guest speaker, Dr. Lilyahue Akers discussed "Changing Patterns in Our Culture." During the business session officers were installed by Mrs. Jean Doyle, state president of

the group. Mrs. Ethel J. Moore is president of the chapter and Miss Clara Williams, corresponding secretary.

### BRECK PTA NAMES NEW OFFICERS

New officers were installed at the Apr. 28 meeting of the Breckknidge Training School Parents-Teachers Association. The officers are: Mrs. Jack Rogers, president; Mrs. Warren Proudfoot, vice president; Mrs. Creech Patrick, secretary; and Mrs. John Collins, treasurer.

### MISSIONARY GROUP MEETS AT CHURCH

The Women's Missionary Society of the First Church of God met Monday at Lyons Chapel with Mrs. Betty Lewis presiding.

During the business period reports were given, including one by Mrs. Veda Crowthwaite on the State Missionary Convention at Paris on Apr. 28. Others at the convention were Mrs. Lewis, Mrs. Delores Crager, Mrs. Ada Caudill, Mrs. Oleta Marshall, Mrs. Bethel Balfour, Mrs. Juanita Crager, and Mr. and Mrs. Eula McCrout.

The program was presented by Miss Ann Sandler, an exchange student to Israel who showed a film strip made during her stay there. Mrs. Lorene Crager presided. The devotional was given by Mrs. Crager and Mrs. Geraldine Tompkins.

### MANY ATTEND VETS MEETING

Over two hundred members attended the regular meeting Saturday afternoon of the Veterans Teachers Association convention. Gov. E. T. Breathitt was the speaker Wednesday and A. L. Landers was the banquet speaker Thursday.

Mrs. Pearl B. Lowe spent the weekend in Nashville, Tenn., a guest of her son, Robert W. Lowe and Mrs. Lowe. Sunday guests at the home of Mr. and Mrs. A. E. Martin were their son and family, Mr. and Mrs. George Martin and son, Miffie, of Dayton, O., and Arthur Barber, Miami, Fla. Mrs. Nancy J. Caudill has returned to her home in Batavia, O. after a two-week visit with her brother, John M. Butcher and family. Mrs. Butcher, who suffered a stroke three weeks ago, is slightly improved.

### DERBY DESSERT BRIDGE AT CARR RESIDENCE

Mrs. Otto Carr, Mrs. Nell Walters, and Elizabeth Zick were hostesses to a Derby dessert bridge party Saturday at the Carr residence. There were 25 guests present. Bridge winners were Mrs. Byron W. Wilkins, Mrs. Monroe Wicker, and Mrs. W. C. Lappin. Winners for the Derby were Mrs. V. H. Wolford, Mrs. W. C. Lappin and Mrs. J. A. Williams.

### WARNER FELLOWSHIP HOLDS RETREAT

The Warner Fellowship of the First Church of God held a retreat at Camp Deer Lick in Bath County Friday and Saturday. Special sponsors are Dr. Hollie Sharpe and James Earl Davis. Rev. John Conley also attended. Guest speakers were Dr. John W. V. Smith and Dr. Gene Newberry of Anderson College. On Sunday Dr. Smith was the visiting minister at Clearfield Tabernacle and Dr. Newberry at the First Church of God.

Mrs. Clyde Hacker and son, Jeffrey and Mrs. Elizabeth McCaskey visited from Tuesday to Friday with Mrs. Hacker's mother, Mrs. Bert Ford, in Corbin, and Mrs. McCaskey's daughter, Mrs. M. G. Hauser in Barboursville.

Mr. and Mrs. Fred Cassidy visited during the weekend with her parents, Mr. and Mrs. R. L. Salyers in Salyersville. They had as their guests Friday and Saturday her sister, Mrs. Tim Harold and Mr. Harold of Portsmouth, O.

Mr. and Mrs. Alex Conyers had as their guest for the weekend her mother, Mrs. Ben T. Pruitt, of Lexington.

Mrs. John H. Hawkins of Lawrenceburg is visiting this week with her sister, Mrs. Tom Young, and Mr. Young.

Mr. and Mrs. George L. Cline were among guests attending the Governor's Derby breakfast in Frankfort Saturday morning. Mr. and Mrs. J. H. Peabody Jr. have had as their guests this week his parents, Mr. and Mrs. J. H. Peabody of Paintsville, Mr. and Mrs. Joe Stout and family, Carrollton, and Mr. and Mrs. Wayne Claborn and family, Louisville.

Mr. and Mrs. Claude Clayton spent Tuesday and Wednesday in Lawrenceburg where they attended the state postmasters convention at Jenny Wiley State Park.

Mrs. Ray Lambert and Mrs. Susan Manning attended a cosmetologists' meeting Sunday at Phoenix Hotel in Lexington.

Mr. and Mrs. A. D. Coleman have had as their guests their daughter, Mrs. George Kerr and son, Brian, of Raleigh, N. C. who will be here for three weeks. Their son and family, Mr. and Mrs. James Coleman of Ashland visited with them over the weekend.

Mrs. John Rogers and Mrs.



## Porters Observe 50th Anniversary

Mr. and Mrs. Stella B. Porter and Mrs. E. L. Moore observed their fiftieth wedding anniversary Apr. 19 with a family dinner at their home. Helping them celebrate the occasion were their three daughters and families: Mr. and Mrs. Eddie J. Moore and children, Venita, Randy and Dale; Lyden, Mrs. Nadine Lentner, Crown Point, Ind. and her daughter and family, Mr. and

Warren Proudfoot were in Lexington Wednesday and Thursday to attend the State Parents Teachers Association convention. Gov. E. T. Breathitt was the speaker Wednesday and A. L. Landers was the banquet speaker Thursday.

Mrs. Pearl B. Lowe spent the weekend in Nashville, Tenn., a guest of her son, Robert W. Lowe and Mrs. Lowe. Sunday guests at the home of Mr. and Mrs. A. E. Martin were their son and family, Mr. and Mrs. George Martin and son, Miffie, of Dayton, O., and Arthur Barber, Miami, Fla.

Mrs. Nancy J. Caudill has returned to her home in Batavia, O. after a two-week visit with her brother, John M. Butcher and family. Mrs. Butcher, who suffered a stroke three weeks ago, is slightly improved.

D. Mabry Jr. of Columbus, O. visited last week with his parents, Mr. and Mrs. D. Mabry.

Mr. and Mrs. Archie E. Park and children, Patti, Dean, Scott and Alan, of Lancaster, O. spent the weekend visiting their parents, Mr. and Mrs. Allie H. Parker.

Among those from Morehead attending the Kentucky Derby Saturday in Louisville were Dr. and Mrs. N. C. Marsh and daughter, Miss Mary Frances Marsh, Mr. and Mrs. Hubert Allen, Frank Laughlin, W. E.

Crutcher, Mr. and Mrs. Robert Day, Mr. and Mrs. Edd Mabry, Miss Lynn Thompson, Miss Lynn Schuyler Evans, Dr. and Mrs. Adron Doran, Robert Mayo and Mr. and Mrs. A. B. Bowne.

Mr. and Mrs. Walter Calvert and Mr. and Mrs. Elton Johnson spent Sunday in Grayson with the former's daughter and husband, Mr. and Mrs. James A. Davis, and visited at Carter Caves State Park.

Miss Karis Keller, Miss Karen Crowthwaite, Miss Sue Mitchell and Miss Nancy Melvin were Saturday visitors in Lexington. Dr. and Mrs. W. B. Owsley were weekend visitors in Owensboro.

Mrs. W. C. Lappin and Mrs. V. H. Wolford were visitors in Louisa Monday.

Mr. and Mrs. H. C. Ross and daughter, Jackie, of Toledo, O. were weekend guests of her parents, Mr. and Mrs. L. A. Pair. Mr. and Mrs. A. Pair, Mr. and Mrs. V. Zanzanelli also visited in Ashland with Mr. and Mrs. Stanley Radjans.

Mrs. Palmer Hall will present her May Day program of elementary music studies at the grand, May 7th at 7 p.m. in the Breckknidge Auditorium. Jim Williams, Stephen Butcher, Drew Lane, Stelvie Calvert

and Carlos Hill were Lexington visitors Saturday.

Mr. and Mrs. James S. Williams and daughters, Dobbie, Leslie, and Sandy, and Mrs. J. L. Nickell and daughter, Elizabeth, spent Sunday at the Judy Layne Girl Scout camp in Menifee County.

Mrs. J. A. Williams visited her sister, Mrs. E. Littleton, in Grayson Thursday. In the afternoon they visited in Ashland.

Mr. and Mrs. Rex Choney and daughter, Jennifer, spent Sunday in Lexington guests of her parents, Mr. and Mrs. Royal Brown.

Mrs. Houston Hendricks of Edgeville, Tenn. is visiting this week with her daughter, Mrs. Hollie Sharpe, Dr. Sharpe and family.

Mrs. Madge Cornett and daughter, Judy, of Frankfort visited over the weekend with Mr. and Mrs. Lindsay Caudill and Diane Jones and Mary K. Moore.

Howard Cornett of Ashland spent Sunday with Mr. and Mrs. J. M. C. O'Neil.

Mrs. Clifford Johnson and Mr. Adrian Kidd of Route 2 were visitors in Lexington Saturday.

Frank Shay, a student at Morehead State College, flew to his home in New York City Thursday to attend the wedding of his sister. He returned Sunday.

Mr. and Mrs. Walton Hayes and daughter, Laurel Ann of Huntsville, Ala. are spending the week with his parents, Mr. and Mrs. R. H. Hayes.

Mrs. Ronald Hart and daughter, Shari, and Janie Queen spent Saturday in Lexington.

Weekend guests of Mr. and Mrs. Watham Gullett were Mr. and Mrs. John Gullett of Amelia, O. and Emma Lou Gullett of Lexington.

Mr. and Mrs. Leonard McIntosh have chosen the name Jana Maria for their daughter, who was born at St. Claffe Medical Center Apr. 21st. She is their second child.

Mr. and Mrs. Paul Pelfrey and Pat Pelfrey of Birmingham, Ala. spent from Thursday to Sunday with Mrs. E. D. Patton. They all attended the races at Churchill Downs Friday and Saturday.

### Marriage Licenses Issued

James Kelsey, 22 Morehead, and Roberta Jones, 21, Clearfield; Apr. 28.

James Roger Lewis, 20, Morehead, and Shirley Jewell, 17, Morehead; Apr. 28.

Gary L. Billups, 21, Wheelersburg, O. and Joyce Warner, 21, Wheelersburg, O.; Apr. 28.

Harry R. Adams, 21, Farmers and Omaha Lynch, 17, Farmers; May 2.

Bobby Ison, 25, Salt Lick, and Verma Rae Hayes, 29, Morehead; May 2.

Shop the Classified Ads



### TO MARRY - Mr. and Mrs. Homer Gregory announce the engagement and forthcoming marriage of their daughter, Billie Jo, to David Michael Wells, son of Mr. and Mrs. J. C. Wells. Miss Gregory is a secretary in the Division of Fine Arts at Morehead State College. Mr. Wells is associated with his father in the lumber business. The wedding will take place June 6 in the First Church of God, Clearfield, with only members of the two families attending.

MAJOR ITEMS - It is doubted if there will ever be a satisfactory distribution of parking space or wealth.

**RAIL SETTLEMENT**  
President Johnson has announced settlement of the 5-year-old railroad work rules dispute. The settlement removed the threat of a nationwide rail stoppage. The National said the settlement terms are "just and fair." And, he hailed the agreement as a victory for collective bargaining and industrial democracy.

**Save on Complete Beauty Services**

- TINTING
- FRONTING
- COVERS
- COLD WAVES
- MODERN HAIR STYLING

All work done by students under supervision of instructors.

Morehead Beauty College.  
Phone 784-4334

**ALL KINDS OF PLANTS**

**Vegetables**  
Tomato - Cuscutower - Sweet Potatoes  
Peppers - Broccoli - Many Others

**Flowers**  
Petunias - Chrysanthemums - Panicles, etc.

**Flowering Shrubs and Evergreens**  
PINK DOGWOOD - FLOWERING CRABAPPLE  
MAGNOLIA

**TWO LOCATIONS -**  
**Farmers Greenhouse**  
U.S. 60 - 8 Miles West of Morehead

**Morehead Garden Center**  
EAST OF MOREHEAD COLLEGE FIELDHOUSE  
(Former Location of Gray's Drive-In)

**MOTHER'S DAY - MAY 10**

**Russell Stover CANDIES**  
for her favorite gift

Assorted Chocolates  
1 lb. \$1.60  
2 lb. \$3.15

always a favorite for "Mom"

delicious Little Ambassadors miniature chocolates  
1 lb. \$2.15

**C. E. BISHOP DRUG CO.**  
MAIN ST. MOREHEAD, KY.

## CHECK YOUR INSURANCE!

Be sure it's paid up before you see THE HORROR OF PARTY BEACH AND THE CURSE OF THE LIVING CORPSE. Be sure to have your FRIGHT RELEASE absolving the theatre of all responsibility for death by fright. You may obtain it at our enter the Trail Theatre.

**WE HAVE THE NICEST GIFTS FOR MOTHER**

**Layne's**  
McKinney Building  
MAIN STREET - MOREHEAD, KY.

Layne's - your headquarters for well-chosen Mother's Day gifts, straight from your heart to hers. Choose carefully from our wide selections, then seal with a kiss, and watch Mom smile!

Lovely nylon, dacron and cotton blend, antrone and satin knit slips, robes, pajamas and gowns by Artemis, Hensen Kickernick and Katz. Sportswear by Bobby Brooks, White Stag, Rosecrest and Jantzen. Hose by Camro. Gloves by Fownes and Kayser.

### To Conduct Cooking School Here

**CHEF COMING - Eddie Doucette, nationally-known chef for the Independent Grocers Alliance, will conduct an IGA cooking school in the Home Economics Building at Morehead State College Tuesday, May 19. To be held in three sessions, the school is sponsored by IGA stores in this area. Doucette said this week that famous IGA Kitchen Recipes would be available to women attending the school, along with prizes and favors.**



**IGNORE HIM**  
Many are looking forward to the pleasure of not reading the book Castro is reported to be writing.

**WISDOM**  
"The only way to end poverty," said Old Sorobard, "would be to end people."

**MOTHER'S DAY GIFTS & CARDS**  
**YOUR V STORE**

**IT'S SNOWBALLING COTTON BALLS**  
250 COUNT  
Soft, Fluffy  
White  
Reusable Ziptop  
Poly Bag  
**47¢**  
REG. 65c

**22 PC. PLASTIC PICNIC SET**  
PARTIES — SNACKS  
**67¢**  
REG. 98c  
Adult Size Cutlery  
Stone Ware  
Colors

**FOOD CHOPPER**  
Cuts & Grinds  
Fast Without  
Tearing or  
Mashing.  
**\$266**  
LONG WEARING CAST IRON

**PAINT SAVING SPREE**  
Choice of  
VINYL LATEX FLAT WALL PAINT  
OR OUTSIDE WHITE HOUSE PAINT  
**\$188**  
Gallon  
Latex Comes In  
Ass't. Best  
Colors  
WAY OFF PRICE  
**PIERCE'S**  
Your Friendly 5¢ & 10¢ Store  
MOREHEAD KENTUCKY



**All He Could Carry**  
**GOOD SUPPLY** — Enoch Lewis of Morehead hit the jackpot last week when he became the winner of a Pepsi-Cola "Shopping Spree" at Allen's IGA here. Lewis won the right to shop free in the supermarket for five minutes and came away with \$27.05 in merchandise which he moved from the store's shelves to the checkout counter in that period of time. With the winner is Charley Crisp, a representative of the soft-drink firm.

**Top Honors Given State Watershed**

The Mud River Watershed in Western Kentucky has received the "Watershed of the Year" award, first such Kentucky district to earn the award presented annually by the National Watershed Congress. The bronze plaque, presented to Jewell Graham, chairman of the Mud River Watershed Conservancy District, cites the achievements of a 10-year project to bring flood-control and water for recreation and community use to the 240,000-acre area, which includes parts of Butler, Logan, Muhlenberg, and Todd counties. The award was made at the Watershed Congress annual meeting at Little Rock, Ark.

The watershed program includes 24 flood-water retarding structures, two multi-purpose dams, 17 miles of stream-channel improvements and accelerated land treatment. Planning began as early as 1954 but major construction did not get underway until 1960. Some construction is yet to be completed. The program is sponsored by the local soil conservation districts and receives assistance from the U. S. Soil Conservation Service and the Kentucky Department of Conservation. The Federal Government pays construction costs of installing flood prevention structures while local sponsors pay for land, easements and rights-of-way.

State Conservation Commissioner J. O. Matlock submitted the application for the Mud River Watershed to the Watershed Congress. He said the Mud River project was begun as a flood-control program and as a flood-control program and has accomplished its basic aims of preventing floods and providing water storage. "But in addition," he said, "it has resulted in a business and recreational boom for the area. At least two new industries have moved in, a new State park has been developed and crop yields in the watershed are higher than ever. The largest multi-purpose dam in the watershed created 900-acre Lake Malone in Muhlenberg, Todd and Logan counties. A State park has been located on the lake and the Kentucky Department of Parks estimates 925,000 visitors will use its facilities annually. More than 250 lots were sold on the lake's perimeter. 100 cabins have been constructed and a sportsman lodge erected, three boat docks were built and 40 miles of private and public roads were constructed. In addition, watershed chairman Graham said the Logan County tax assessor estimated a 100-acre farm in the area before the dam was built had an assessed tax valuation of \$200. The assessed valuation now for 100-foot lots on the same land is about \$1,000 for the lot and cabin.

At Lewisburg, water for the town now comes from a near-by dam completed in 1962 and impounding 40 acres of water. A water treatment and purification plan near the lake is almost completed. It will free residents from undependable wells and provide additional water for new industry, Graham said. Lewisburg Mayor Marion Price Pitt estimates the water system will bring 170 new jobs to the community. A factory employing 75 workers has already gone into production. Graham pointed out that in addition to the flood control program, conservation work in the Mud River Watershed has increased. He said a recent study showed that 87 percent of the planned conservation practices have been carried out. Of the 1,860 farmers in the project more than 1,960 are following basic conservation plans. Graham said that 900 acres of contour strip-cropping has been introduced, 500 acres of waterways established and 75,000 young trees have been planted.

**Gifts that say Happy Mother's Day**

**Naturalizer, Covers the Foot— BUT BRIEFLY—**

SEERSUCKER slenderizer by Myrette... ready to take you anywhere this summer... cool, fashionably. And no matter how often you wear it, this gem will always look brand fresh! Trims tailored of rich acetate & cotton seersucker in a woven ombre stripe. Cool colors, 14½-24½.

**\$1498**

A wisp of a shoe with beguiling open-up detailing to give you the coolest summer ever. Naturalizer adds comfort, too, with a foam cushioned insole and combination last.

**\$1498**

**A Stacked Heel Pump THAT'S ALL NEW**

Sculptured hand-stained maple heel adds a chic look to this tailored suit shoe. Soft glove leather and combination last assure perfect fit. Add a spark of white to your wardrobe with Naturalizer — the shoe with the beautiful fit.

**\$1298**

Other Shoes from \$2.98 to \$8.98

**SCHOLARSHIP BENEFIT CONCERT**  
VASILE VENETTOZZI, Soprano  
Assisted by  
LUCRETIA STETLER, Pianist  
VIOLET C. SEVERY, Accompanist  
Sponsored by  
The Fine Arts Department  
of the  
Morehead Woman's Club  
Sunday  
May 17, 1964  
3 p.m.  
Baird Music Hall  
Tickets \$1.00 — available from any member of the Fine Arts Department, Music Building Office, or at door.  
Children under 14 will be admitted at the door for 50¢.

**Fashion Jewelry**  
SPARKLING GIFT IDEA FOR MOTHER ON HER DAY  
Mom's a jewel, so give her the gift she'll treasure — fashion jewelry. We've bracelets, pins, necklaces, earrings, more, for your selection.  
**\$100 to \$200**

**Handbags...**  
for a Happy Mother's Day

**FREE**  
We will give a FREE potted plant with the first 150 purchases of Mother's Day gifts on Saturday only.

**FREE**

Remember Mother likes handsome handbags. Ours have the look of extra elegance, the outstanding quality and in white, black and colors. Choose from our patents and straws. \$2.98 to \$4.98.  
Purses to match Naturalizer Shoes \$12.98 to \$14.98.

**MARTIN'S**  
Main Street Morehead, Ky.

**MEADOWS & CRAGER**  
Wish To Announce  
They Have Sold Their  
**GOODYEAR STORE**  
to  
**GUY ROBERTSON**  
Former Owner Morehead Cigarette Service

We wish to thank all of our customers for their patronage in the past and to say that we hope they will continue to trade with the new owner.

Watch This Newspaper  
For New Announcements From  
**ROBERTSON**  
**GOODYEAR STORE**

Shop the Classified Ads

# Favorable Weather Helps Tobacco Plant Growth

By Adrian Rorer  
County Agent

Most of us have been blessed with favorable growing weather since sowing our plant beds, and as a result, plant beds are looking exceptionally good. Unless we have unforeseen difficulties, there should be an abundance of plants this season to set the entire acreage of tobacco in this county. However, there are precautions we should take. Let me say I think every tobacco grower ought to visit his plant bed everyday if possible, and if not this often, at least four or five times a week. We have already had some calls about controlling the "flea beetle," and since this damp, cool weather is very favorable for this insect, we need to look for it. Almost everyone is familiar with his habits and description, but if you see plants in your plant bed that have fine holes in them, flea beetles are present. In many cases, when you roll back the canvas they will hop away from the plants, and you will fail to see them, but you can see evidence of their damage.

These pinholes made by the flea beetle destroy needed leaf surface which is important to the plants' growth, and for this reason if left untreated plant beds can be seriously damaged. The control is one of two materials that are recommended. One is DDT used as a wettable powder at the rate of six table-spoons in at least three gallons of water for a bed 9 x 100 feet. If the plants have two to six leaves on them. If the plants have six or more leaves, double the amount of DDT.

Five table-spoons of Sevin 40 at least three gallons of water can be used, but only if the plants have reached the 4-2 leaf stage. Earlier applications can be injurious to the plants.

In the dust form use 10% DDT, 1/2 pound, to a hundred gallons in the 2 to 6 leaf stage; 1/4 pound in the 6 to 12 leaf stage. DDT will also get the above-ground cutworms.

Most of us have good plant beds started. Let's watch them closely and not lose them to insects because of carelessness.

**Sudan Grass**

You get short of pasture in the summer when most of your pasture's growth slows down. The answer may be in an emergency pasture such as Sudan Grass. Sudan Grass sown in the fall, about 6 weeks before planting time can be turned on in approximately 6 weeks, if fertilized well and managed well, and will carry 4-5 cows to the acre.

Some precautions have to be observed against extreme drought conditions and frost will cause prussic acid formation and poison cattle. However, with the use of the recommended variety, Fiber, which is low in this material, there is no danger to worry too much about poisoning if it is managed correctly.

Dairymen and pasturemen have found that a few acres of this grass has helped to fill a gap in the pasture season, that is very important. If you would like further information stop by and let us talk to you.

**Corn**

Most of us haven't planted any corn to speak of yet, and in view of the fact that we have had trouble with dandelions, crabgrass, and other grasses and weeds in our yards, may we suggest that you use one of the herbicides that have proven very effective in controlling these grasses and weeds.

Some of the herbicides including Span, Alachlor, Glennis Frakey, and others use a sprayer; they did so last year with very good results. The cost is so low.

With these herbicides some growers have received good yields without any cultivation at all. And this way, have you considered a wheel-track planter for your crop this year. It will certainly cut down on machinery costs and seed bed preparation.

**Warning**

It was called to our attention the other day that some folks haven't seen the warning of U.S.A. against root crops and some other vegetables from soil treated with some of the soil insecticides. As of now, everyone is advised to not use root crops such as radishes, potatoes, carrots, and so forth, that have been grown in soil treated with ALDRIN. This is one of the materials that will build up within the body and can cause serious results.

**Herbicides**

It looks like we have a good crop of wild onions, dandelions, and so forth this year, and if you are having trouble with these in your lawn, 2,4-D, if used properly, will do a good job in getting rid of them. Dandelions are easily killed while wild onions will take longer and will have to be sprayed in the spring and fall two to three years to eliminate them.

# Trip To Jackson By First Lady Set For May 21

The nation's first lady, Mrs. Lyndon B. Johnson, will include a side visit to Jackson, Ky. during her scheduled trip to Lexington May 21.

White House sources also said Mrs. Johnson now is considering spending the entire day in the state, instead of flying in and out for a 7 p.m. address before the Kentucky Federation of Women's Clubs at Lexington.

These pinholes made by the flea beetle destroy needed leaf surface which is important to the plants' growth, and for this reason if left untreated plant beds can be seriously damaged. The control is one of two materials that are recommended. One is DDT used as a wettable powder at the rate of six table-spoons in at least three gallons of water for a bed 9 x 100 feet. If the plants have two to six leaves on them. If the plants have six or more leaves, double the amount of DDT.

Five table-spoons of Sevin 40 at least three gallons of water can be used, but only if the plants have reached the 4-2 leaf stage. Earlier applications can be injurious to the plants.

Most of us have good plant beds started. Let's watch them closely and not lose them to insects because of carelessness.

**Sudan Grass**

You get short of pasture in the summer when most of your pasture's growth slows down. The answer may be in an emergency pasture such as Sudan Grass. Sudan Grass sown in the fall, about 6 weeks before planting time can be turned on in approximately 6 weeks, if fertilized well and managed well, and will carry 4-5 cows to the acre.

Some precautions have to be observed against extreme drought conditions and frost will cause prussic acid formation and poison cattle. However, with the use of the recommended variety, Fiber, which is low in this material, there is no danger to worry too much about poisoning if it is managed correctly.

**Corn**

Most of us haven't planted any corn to speak of yet, and in view of the fact that we have had trouble with dandelions, crabgrass, and other grasses and weeds in our yards, may we suggest that you use one of the herbicides that have proven very effective in controlling these grasses and weeds.

With these herbicides some growers have received good yields without any cultivation at all. And this way, have you considered a wheel-track planter for your crop this year. It will certainly cut down on machinery costs and seed bed preparation.

**Warning**

It was called to our attention the other day that some folks haven't seen the warning of U.S.A. against root crops and some other vegetables from soil treated with some of the soil insecticides. As of now, everyone is advised to not use root crops such as radishes, potatoes, carrots, and so forth, that have been grown in soil treated with ALDRIN. This is one of the materials that will build up within the body and can cause serious results.

**Herbicides**

It looks like we have a good crop of wild onions, dandelions, and so forth this year, and if you are having trouble with these in your lawn, 2,4-D, if used properly, will do a good job in getting rid of them. Dandelions are easily killed while wild onions will take longer and will have to be sprayed in the spring and fall two to three years to eliminate them.



Bloom of Health

**WHO'S AFRAID?** Clearly not six-year-old Gregory Goble, Floyd County, as he sits in the lap of his mother, Mrs. Christine Goble, so that Laboratory Technician Noah Brunty can take a blood sample in tests that a team of Federal, State and county health workers are giving to determine medical and health needs of the southeastern Kentucky region. The project, supported by a United States Public Health Service grant of more than \$500,000, has now moved to Leslie County and eventually will cover 18 Southeastern Kentucky Counties over a one-year period. The tests are for finding and treating cases of tuberculosis, diabetes, lung and heart disorders, anemia, nutritional deficiencies and poor vision, and other ailments.

# Long-Rifle Matches Again Scheduled This Summer

Sharpshooting Kentucky long-riflemen are at it again in their mock duel with Pennsylvania over the proper name of the Kentucky long rifle.

Although the battle was officially settled last year when Kentucky won both "shoot-outs" with Quaker State marksmen, a return match is now being scheduled to give the Pennsylvanians another chance.

C. Doc Haddaway, Louisville, manager of the Kentucky riflemen, said the 1964 team will be chosen on the basis of two elimination matches. The first was held early this month and the second will be held June 13 and 14 at the George Rogers Clark Rifle Range at Boston, Ky.

Haddaway urged all marksmen interested in trying for a berth on the team to participate in the June match.

The top 10 scorers will be chosen to represent Kentucky in this year's battle with Pennsylvania. Those selected will be notified on the last day of the elimination matches, June 14, when all scores are in and posted.

The match with Pennsylvania will follow the pattern of last year's bout, Haddaway said, with the first to be held in Pennsylvania early in September and the second shortly after in Kentucky.

blintock weapon used by pioneers and generally referred to as a Kentucky Rifle.

The Northerners claimed the rifle should be properly called the "Pennsylvania Rifle," because the guns were first made in that state.

**Check Quality & Price With Us!**

25-30 Mobile Homes to choose from. We trade for anything! Your volume dealer with prices to suit every need.

— A Name You Can Trust —  
**DOYLE MOBILE HOME SALES**  
Phone 854-6001 or 854-6091  
FLEMINGSBURG, KY.

**USED CAR SELL-OUT**

Since we started our "Clearing the Lot" sale two weeks ago, we have enjoyed such a tremendous success that we have only a few cars left. In order to complete our clearance, we are offering the remainder of our stock to you at wholesale or less.

Hurry on down to see your old Bargain Barn Buddy, Curt Hutchinson at

**CURT'S AUTO FAIR AND BARGAIN BARN**

U.S. 60 EAST — MOREHEAD, KY.



# Which house has air conditioning?

If you've tried to sleep these hot, sweltering nights, you can envy the lucky folks who have air conditioning. They can ignore the hot weather, dial the spring-like coolness they want and enjoy a night's rest.

Come to think about it, they're not particularly lucky. Air conditioning is now within everyone's budget. Costs only a few pennies a day, thanks to low-cost rural electric power.

Air conditioning gives welcome relief for those who suffer from hay fever or asthma, too. Bring spring back to your home. Enjoy sleeping again. Air condition your home now!

**MODERN ELECTRIC AIR CONDITIONING**

**\$15 BONUS**

REC members can earn big cash in bonuses if they air condition now. This special offer expires August 31st. Call us for details.

**Grayson Rural Electric Cooperative Corporation**  
Grayson, Kentucky

**55,000-Foot Plant Planned At Elkton**

Rockwell Manufacturing Company has broken ground at Elkton for a new 55,000 square-foot plant to produce molded plastic parts.

The plant will manufacture plastic components for such Rockwell products as gas meters, water meters and power tools and will also produce plastic components for other manufacturers.

# PEPSI-COLA \$1,850,000 Shopping Spree



**1st PRIZE** HALF-HOUR FREE SHOPPING SPREE FOR YOUR ENTIRE FAMILY PLUS 1964 MERCURY STATION WAGON!

**10 SECOND PRIZES** 10-1964 MERCURY STATION WAGONS PLUS A YEAR'S SUPPLY OF AUTO EQUIPMENT AND SERVICES!

**10 THIRD PRIZES** 10 QUARTER-HOUR FREE FAMILY SHOPPING SPREES!

**100 FOURTH PRIZES** 100 GIFT CERTIFICATES! (\$31,500 TOTAL)

**SPECIAL GRAND STATE PRIZE IN KENTUCKY** FREE YEAR'S SUPPLY OF GROCERIES PLUS FREE YEAR'S SUPPLY OF AUTO EQUIPMENT AND SERVICES PLUS FREE YEAR'S SUPPLY OF PEPSI, TEEM AND PATIO DIET COLA!

**HUNDREDS OF LOCAL PRIZES** FREE SHOPPING SPREES! VALUABLE GIFT CERTIFICATES!

**ENTER OFTEN! WIN SEVERAL PRIZES!**

**EASY TO ENTER! NEW WINNERS EVERY WEEK!**



# GRAND OPENING

THURSDAY - FRIDAY - SATURDAY - MAY 7-8-9

## JACKSON PAINT AND TILE

On Railroad Street - Across From Qualls' Wholesale

### GRAND OPENING SPECIAL PRICES



A velvet flat interior finish for walls and woodwork, wallpaper, wallboard, interior brick and plywood or primed bare plaster.

\$4.98 Gal. - \$1.67 Qt.

MELDURA .....	\$3.29 gal. - \$1.19 qt.
LATEX HOUSE PAINT .....	\$6.00 gal.
PLAX .....	\$6.84 gal. - \$2.00 qt.
PLAX-COTE Reg. Colors .....	\$5.66 gal. - \$1.60 qt.
PLAX-COTE White .....	\$6.00 gal. - \$1.79 qt.
BRITE WHITE HOUSE PAINT .....	\$4.90 gal. - \$1.50 qt.
PLAX SPRAY .....	\$1.39 can
KEM PLASTIC PATCH .....	5 lbs. 85¢ - 2½ lbs. 55¢ - 1 lb. 23¢



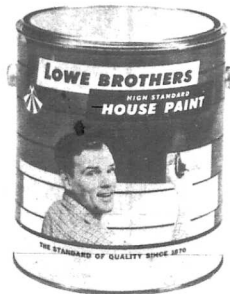
A rich subdued luster finish for interior and exterior, for use in kitchens, bathrooms, playrooms, for woodwork in every room in the house. It is also designed for use on both wood and metal furniture.

\$7.69 Gal. - \$2.19 Qt.



LOOK - GET FREE

Coin Purse With Every Purchase



A gloss exterior finish to be used on exposed exterior walls of wood, brick, stucco, concrete, asbestos-cement shingles and siding.

\$5.84 Gal. - \$1.79 Qt.



ABSOLUTELY FREE

Paint Paddles and Caps

10% OFF

ON ALL OTHER PAINTS AND ACCESSORIES

Come to our Grand Opening May 7, 8 & 9. Let JACKSON PAINT AND TILE bring a smile into your home.

We carry a complete line of Lowe Brothers Products.

FOR THE BEST DEALS ANYWHERE GO TO

# JACKSON PAINT AND TILE

ON RAILROAD STREET - ACROSS FROM QUALLS' WHOLESALE

### Ashland Oil's Earnings Up Forty Percent

Ashland Oil & Refining Company reported a 40 percent increase in earnings for the first six months of the current fiscal year and an increase of 54 percent for the second quarter ended Mar. 31, 1964, company officials said today.

Earnings for the six-month period climbed to \$12,067,121 or \$1.57 a share, compared with \$8,622,233 or \$1.12 a share earned in the same period last year. Second quarter earnings share, company gain \$3,929,361 and 51 cents a share earned a year ago.

Sales of \$193,843,256 for the six months were \$20,734,510 greater than last year.

### Bank Expert Warns About Making Will

Herdie W. King gets questions from wives — about widowhood and wills.

He gets questions from husbands about the same subjects about these seemingly movable subjects, King, a banker and lawyer, figures that what the typical husband and wife don't know about wills, trusts, and estate handling would fill a shelf full of books.

The ostrich posture about wills, in particular, makes the least sense of all to King, vice president and head of the trust department at Lafayette National Bank in Brooklyn, N.Y. "If you desire to pass along as much of the nest egg as possible to your survivors, see an attorney soon and get a will drawn," King said in an interview.

King also is editor of "Forthright," a bank publication that discusses, cracker-barrel fashion, the touchy subjects of widowhood, wills, estate taxes, trusts.

The banker has handled estates and trusts ranging from \$5,000 to several million. The \$5,000 was a trust fund for a dog. His biggest transaction for a dog in a will: Executing a

will of the deceased to have a \$60,000 monument placed on a grave in an animal cemetery.

"Having a will drawn properly embraces a complete knowledge of you and your family, their strengths and weaknesses, and in particular, their emotional make-up," King said. "Second, a person should know the nature of the assets, whether they are divisible, whether they are acceptable to recipients, whether the recipients are of an age compatible with legal ownership."

"Take emotional make-up," King said you would want to make one kind of arrangement for a spend-thrift or gambling son and another kind for a child who demonstrates the ability to handle money in a sensible manner.

King cautioned against do-it-yourself alterations on a properly drawn will.

Either have a new will drawn up, incorporating all changes and revoking the old will — or have a codicil, which amends with the same formalities as the will itself.



**Books For Library**  
PRESENTATION PROJECT — R. C. Powell, r. superintendent of Columbia Gas Transmission's Morehead division, presented two volumes to Rowan County High School library, Ward Williams, L, and assistant principal William Calhoun, recently. Powell made the presentation of a new history and a book by the late Gen. Douglas MacArthur as a part of the company's continuing policy of aiding schools in communities where it has installations. The local gift was made last month during National Library Week.

### Agency To Peruse Status Of Women

A commission on the Status of Women was created last week by Gov. Edward T. Breathitt "to review and research the progress" of women in Kentucky.

Names of the 25 members — men and women — will be announced shortly. They will include 20 private citizens and six state officials.

The governor authorized the commission to use services of experts "whenever practicable" and all state agencies.

The group's analysis of women's roles will extend into areas ranging from employment and home services to civil rights and education.

The commission was instructed to compile a detailed report of findings and recommendations and submit it to Breathitt within a year after announcement of members.

The governor said the report would be used as a basis for governmental action to assure fair treatment of women and to help them in finding suitable employment.

**MONUMENTS**  
GRANITE and MARBLE  
All Styles, Sizes, Colors  
W. A. Porter  
Route 1 — Olive Hill, Ky.  
Phone 326-3518  
or  
Dayton Porter  
Morehead, Ky.  
Phone 784-5321

**MOORE'S DRYWALL**  
Ralph Moore  
Morehead  
245 Flemingburg Road  
Phone 784-5155

WE HAVE A COMPLETE LINE OF  
**Infant Wear And Supplies**  
● Receiving Blankets ● Diapers ● Training Pants  
● Pajamas ● Topper Sets  
● Regular Diapers \$1.25 Doz. ● Prefold Diapers 13.75 Doz.  
● Everything For the Infant at the Lowest Prices in Town —  
**CRADLE SHOPPE**  
(Located in Bays Turner TV & Radio Repair Shop)  
WEST MAIN STREET — MOREHEAD

**GET THE TOP DOLLAR!**  
SELL US YOUR  
**WALNUT LOGS**  
(12-In. Or Larger In Diameter)

Naturally, we can pay you even more when you bring your walnut logs directly to our mill. (Our buyers will quote on larger amounts of standing trees.)

**George E. Tomlinson Co. OET**  
PHONE 744-0111  
MAGNOLIA ST. WINCHESTER, KY.

we have the **BEST GIFTS for Mother!**

See Them In Every Department at . . .

**McBrayer's**

Wide Selection!  
**STYLISH SUNGLASSES**

• Top Quality • Budget Priced  
Novelty designs, wrap arounds and many more! Styles for men, women and kiddies.

10¢ to \$1.98

**McBrayer's, Inc.**  
MAIN STREET — MOREHEAD, KY.

**Clothespin BAG 50 CLOTHESPINS**  
59¢ REG. 49¢ **43¢**

• Rustproof Wire Frame • "Homcrest" Quality  
Roomy 11x13-in. bag hooks to smoothly polished hardwood line, keeps pins within easy reach for delicate fabrics, durereach. Detach for washing jobs 7-ool spring.

### Voluntary Auto Check Is Sought By Breathitt

A voluntary auto safety check program, giving every motorist a chance to do his part in making his community a safer place to live, has been launched by Gov. Edward T. Breathitt.

With approval of the Kentucky Department of Public Safety, check lanes will be set up by communities throughout the state. Vehicles pronouncing safe will be given a 1964 safety-check windshield sticker.

Using one of the stickers to his own car, the governor urged all motorists to "check your car, check your driving, check accidents." Even our best drivers, he said, are poor risks when they drive with bad brakes, tires or parts.

Items to be checked in a national program sponsored by the Auto Industries Highway Safety Committee and LOOK magazine, include brakes, lights, steering, tires, exhaust system, glass, windshield wipers and wipers, rearview mirror, horn and seat belts.

### Motorists Are Expected To Exercise Prudence

Reasonable prudence is expected of motorists even under hazardous driving conditions the Court of Appeals ruled last week.

Partly reversing and partly affirming a Muhlenberg Circuit Court accident case, the court said that two factors are present every time a vehicle slides on a slick highway: The hazardous condition and the way the automobile was driven.

Appellate Commissioner Watson Clay said:

"The act of skidding itself under known natural hazardous conditions which results in injury to others constitutes circumstantial evidence of negligence."

Another routine case handled by the high court had an unusual aspect. As grounds for reversing Jefferson Circuit Court in an injury damage suit, the appellant cited the judge's remarks to a jury panel.

Special Commissioner John P. Lair said:

"During the general instructions to the panel, it appears that the trial judge said to the jury: 'You will be given a blood curdling oath, but you do not have to pay any attention to it.'"

Lair said the words at first seem "so unbelievable, shock and highly improper as to cause one to lightly pass them over as you would a bad joke."

He called the remarks "frivolous and highly improper (but) undoubtedly spoken innocently."

Lair said the jury which tried the case 10 days later was administered the regular oath and the earlier remarks were not part of the trial.

### Flood Plays Havoc With Highways

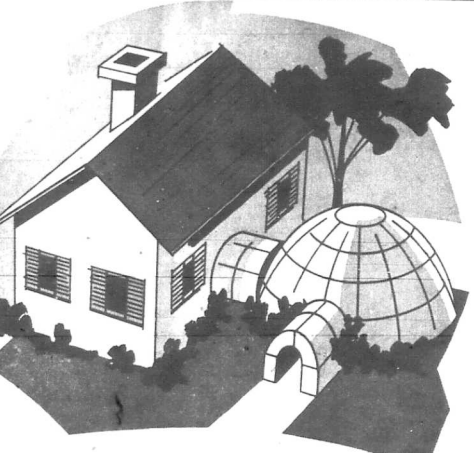
Much-needed highway funds are being used to repair roads damaged by winter snow and spring floods, Highway Commissioner Henry Ward said today.

"There's never enough money to take care of all the roads in Kentucky, especially the rural roads," Ward said. "And to have this annual recurring damage to our roads by snow and floods only disrupts our highway program further."

Road estimates are not complete for this year, but the average for the last four years has been approximately \$8,000,000. Although this year's damages are not expected to exceed this amount, repairs are being made throughout the twelve districts as fast as possible with the money available, Ward added.

Highway Maintenance Director T. J. Hoggood reports that about 60 percent of repairs are now completed and that all damaged roads are expected to be back to normal within the next two or three weeks.

"Winter damages should be about average this year," Ward continued. "The heaviest damage to Kentucky's roads will come from the severe floods we had this spring."



### Adding on a new room -- or an igloo?

Modern electric heating can make that new room just what you want it to be — a warm, comfortable addition to your present home — not the "igloo" that sometimes results when you put the added load of a new room on your old heating plant.

And with electric heating you're getting the advantages of individual room control, and clean, flameless heating that never requires attention or servicing.

And now with our low total-electric rate, electric heating is more economical than ever before. It's an important part of the "joy of total electric living."

So come in and have a talk with KU heating specialists. They will help you with your plans and estimate annual heating costs before you decide.

**TERMITES?**  
Call **Terminix!**  
\$5000 GUARANTEE  
Again! Future Termites Damage  
For Further Information Call

**CARR LUMBER CO.**  
Phone 784-5438  
All Work Done by Terminix Co.  
Lexington, Ky.

**KU**  
SYMBOL OF SERVICE  
KENTUCKY UTILITIES COMPANY  
an investor-owned electric company

GO FIRST CLASS ELECTRICALLY  
FLAMELESS CLOTHES DRYING  
FAST WATER HEATING  
CLEAN COOKING  
THREE HEAT HEATING  
FOOD PRESERVATION  
LIGHT LIVING

**CHAKERS TRAIL**  
MOREHEAD, KY.

**TONIGHT**  
FRIDAY & SATURDAY

**WARNING!**  
POSITIVELY NO ONE ADMITTED UNLESS you agree to release this theatre of all responsibility for death by fright!

**FRIGHT RELEASE**

**THE HORROR OF PARTY BEACH**

Now The Old Area Sings But Is It Best Song?

PLUS 2nd ALL NEW FRIGHT HIT!

**THE CURSE OF THE LIVING CORPSE**

AN UNBROUGHTERED PRODUCTION PRESENTED BY JOHN CANTRELL-UNITED

**Sunday & Monday**  
2 DAYS ONLY 2

The story of a man and his imagination — and the women who are so wicked a part of it!

**WINNER OF 2 ACADEMY AWARDS!**

INCLUDING BEST FOREIGN FILM OF YEAR

01 02

MARCELLO MASTROIANI CLAUDIA CARONALE ANOUK ANNE SANDRA MALDI  
ROSSELLA FALK BARBARA SHEELE

**Tuesday & Wednesday**

Winner 2 Academy Awards!  
Best Actress — Best Supporting Actress

**the miracle worker**

a flash of intensely personal drama... a brilliant bolt of bold motion picture entertainment... a film beyond the usual! starring **ANNE BANCROFT** and introducing **PATTY DUKE** with **VICTOR JORY**

THEATRE



ENTS  
OF MARBLE  
ases, Colors  
Porter  
ve Hill, Ky.  
28-2518

Porter  
s, Ky.  
84-5221

HIT  
AY &  
RDAY

RELEASE

SE  
NG  
SE

his  
en  
it!

ENTS

SO MILK  
S  
S

SONAL  
bit of  
inter-  
yond  
and  
JORY

# Home President Visited Fixed By Federal Government Loan

Fletcher's home near... after it was visited by... Lyndon B. Johnson... one of 1,600 East... homes repaired... approved this year under an... program of... Department of Agriculture... Farmers Home Administration.

\$1,000, non-repayable grant, approved in March, means new siding, timber supports, floor, new windows and doors, and roofing for the home. President Johnson, who spent about 20 minutes with the Noah DeWan family, took a seat on some two-by-four's laid on the front porch after the improvements were made. Overhead, new electric wiring indicated to the President that the

Fletchers only recently began enjoying the convenience of electricity. Dec. 16, 1953, Fletcher recalled, was the family's first day with electric lights. The Fletchers have spent \$278.31 of their \$1,000 home-improvement grant. The balance is in a joint bank account held by Fletcher and Gene Grider, Farmers Home Administration supervisor who covers six counties from his office in Paintsville, 24 miles away. Grider explained that if other improvements are made on the Fletcher home, the remaining funds will be used to cover cost of supplies and labor.

Since the President John F. Kennedy last November called on Federal, State and local agencies in the Appalachian area to speed efforts to reduce personal hardships, especially during the winter season, the 1,600 home-owners in 25 Eastern Kentucky counties have received \$1,236,040 in non-payable grants of \$1,000 or less.

Although the Administration's home improvement program dates from 1947, its Kentucky office, headed by Sam Harrison in Lexington, did receive a supplemental appropriation of \$2 million last November for major improvement and construction loans. The \$1.6 million of this has already been loaned to Eastern Kentuckians who re-pay the loans at 4 percent interest over a period from five to 25 years. The remaining \$400,000 available for these loans will probably be depleted by June 30, end of the fiscal year, Harrison said.



Sensations From A Sewing Machine

BRECK STYLE SHOW — modeling their own clothes last week was held at the regular meeting of the chapter of Future Homemakers of America were, Mr. Nancy Duggan, Jill Taylor, Tina McClure, Cindy Massey, Elizabeth D. Webb, Marie Bernier, Alma

Lou Lake, Charlo Teufel, Leigh Ann Ellington, Elizabeth Ann Tolliver, Patty Allen and Jalah Hurt. The letter also narrated the event for some 200 persons who were guests at the meeting. Theme of the show, was "Sensations From A Sewing Machine."



St. Claire Hospital 784-4110

**Admissions**  
Apr. 29 — Marjorie Keaton, Olive Hill; Putnam Ratliff, Mt. Sterling; Jewell Barker, Morehead; Hazel Jenkins, Clearfield.  
Apr. 30 — Alvin Caudill, Morehead; John Kelsey, Morehead; Dwight Perry, Morehead; Teddy Pass, Morehead; Mrs. George Hall, Olive Hill.  
May 1 — Ruth Rogers, Olive Hill; Mrs. Rexford Johnson, Cincinnati, O.; Loretta Queenberry, Morehead; Mrs. Joseph Karrick, Owingsville; Gladys Porter, Jacobs; Martin Puckett, Morehead; Mrs. Arnold Knipp, Upper Tygart; Florence Siddham, Morehead.  
May 2 — Lucinda Adkins, Litchfield; Mrs. Louie Crager, Clearfield; Maude Skags, Roscoe; Nellie Smith, Frenchburg.

**Dismissals**  
Apr. 29 — Rev. Charles Brooks; Iva Stacey; Mammie Lambert; Bill Gary; Lorenz Reichfield.  
Apr. 30 — Mrs. James Gil-

ham and son.  
May 1 — Mrs. Dallas Fraley and daughter; George Horton; Jewell Barker; Susie Hyatt; John Jones; Marjorie Keaton.  
May 2 — Mrs. Ralph Jenkins and son; Charles Tomlin; Teddy Pass; John W. Clark; Dwight Perry; Loretta Queenberry; Thomas Young; Grace Bloomfield.  
May 3 — John Kelsey, Morehead; Mrs. Rexford Johnson and daughter; Mrs. George Hall and daughter; Florence Siddham; Gladys Porter; Alvin Caudill; Joseph Searight; Lona Jones.  
May 5 — Mrs. Joseph Karrick and daughter; Mrs. Arnold Knipp and daughter; Edele Moore; Cathy Purnell; Ronald Cornett.  
**Births**  
Apr. 30 — Mr. and Mrs. Ralph Jenkins, son.  
May 1 — Mr. and Mrs. Rexford Johnson, daughter; Mr. and Mrs. George Hall, daughter; Mrs. and Mrs. Arnold Knipp, daughter; Mr. and Mrs. Joseph Karrick, daughter.  
May 2 — Mr. and Mrs. Louie Crager, daughter.

## CHECK YOUR INSURANCE!

Before it's paid up before you see THE HORROR OF PARTY BUNCH AND THE CURSE OF THE 'LIVING CORPSE' Be sure to have your FRIGHT RELEASE absolving the theatre of all responsibility for death by fright. You may obtain it as you enter the Trail Theatre.

Complete Ambulance Service  
Oxygen Equipped  
"Equipped To Serve You"  
Member of Kentucky Funeral Directors Burial Association  
Authorized To Service  
Burial Insurance Contracts Issued by COMMONWEALTH LIFE INSURANCE CO.

LANE FUNERAL HOME  
Phone 784-4134 Morehead, Ky.

Sometimes it's best to be "on the outside looking in"

DRIVE-IN BANKING

Stormy days . . . days when dressing for town seems too much trouble . . . these are just some of the times when Drive-In-Banking is a boon. It's easy, quick, no less efficient than inside, where we hope to serve you at other times. Start enjoying it!

PEOPLES BANK OF MORHEAD

JOIN SUMMER LEAGUES STARTING JUNE 1  
Bowl for Fun and Health at . . .  
**Morehead Lanes**  
Behind Jerry's Drive-In

## 42-Cent--

(Continued from page 1.)  
ple, Paintsville last year made application under the same program and received about 30 percent of the total cost of its facility. The amount which the government will finally approve depends on local factors, rather than any area-wide condition. Under a 50 percent grant, the city's consulting engineers estimated that the program could be carried out without any increase in water rates. Less than 50 percent would probably require some "adjustments," and failure to obtain a grant would necessitate the doubling of present rates, they told council at an earlier meeting. The Utility Plant Board has said that the previously discussed 42-cent-rate from the college could be absorbed by the board without an increase in rates.

## Publisher's Pen--

(Continued From Page 4)  
one day's problems . . . applications are still being taken for occupancy (in June) of Morehead's low rent housing. Phone 784-414 for details and an interview. These duplex housing units of one, two, three, and four bedrooms are more modern than premises most of us occupy finally — a 11 m down about this water controversy and constructively reason with facts and figures forgetting personal desires and feelings and 'for-me' remuneration or recognition. This can be worked out with some solid, and objective, thinking. As our friend, the late Mr. Chief Justice Fred M. Vinson, used to say: "Let's take our head pencils and figure together."

Shop the Classified Ads

## Facts and Figures

(Continued from page 1.)  
than the proposal submitted at Washington Wednesday.)  
Emphasized in oral testimony and written documents submitted at Wednesday's hearing are these factors: 1. The reservoir is in an area of alarming high unemployment and so designated in the "crash" program; 2. Floods for the past 50 years and protection the reservoir will offer for downstream property; 3. Cost for relocation of utilities, highways etc. is small; 4. No factories, large buildings etc. are in the basin and it is comprised of valley farms and farm houses; 5. The dam is less than two miles from the C&O Railroad near Interstate 64; U.S. 60 an airport; 6. This area of Kentucky has never before received a sizeable federal expenditure of any type; 7. Reservoir is limited in the area; 8. The dam will be about 11 miles from Morehead State College, largest institution of higher learning in Eastern Kentucky; and 9. Impoundment of water, plus favorable transportation, abundance of labor, and nearness to principal markets should attract industry requiring large amounts of water, such as pulp or paper processing plants. Cave Run represents a victory for proponents who have been working on the project for over eight years. The reservoir was first surveyed in 1937, but lay dormant until 1965 when citizens groups from the four affected counties formed an Association. Many hearings have been held in Washington, Louisville and Cincinnati in the past five years. The project bears the endorsement of former Governors A. B. Chandler and Bert Combs. Congressman Perkins has pushed Cave Run and is given credit for approval and appropriations. Senators John Sherman Cooper and Thurston Morton also endorsed Cave Run. Representative Perkins, Senators Cooper and Morton, and newspaper Publisher W. E. Crutcher spoke for the Cave Run Reservoir at Wednesday's hearing. Scores of other people in the four counties have appeared at times before Congressional committees and the Corp of Engineers to expedite the reservoir.

# Jet-smooth Luxury Chevrolet makes crooked roads feel like going straight

Chevrolet's Full Coil suspension makes the crookedest S-curve seem on the level. With a double-acting shock absorber in each corner, it takes the jumps out of bumps. With 4-link leveling control, you get away with Jet-smooth acceleration. With built-in anti-dive control, you come to Jet-smooth stops. And with low-friction Roll-Over steering, you walk over twisting roads as gracefully as a ballerina.



All seven Chevrolet engines are precision balanced for smooth operation. And because your Chevrolet has over 700 insulators and sound deadeners, you don't have to shout to have yourself heard. It's Trade 'N' Travel Time at your Chevrolet dealer's—the perfect time to try the Jet-smooth ride. Find the meanest stretch of road you can. Then see for yourself how straight a crooked road can feel.



Chevrolet Impala Super Sport Coupe

CHECK THE 'N-T' DEALS ON CHEVROLET - CHEVELLE - CHEVY II - CORVAIR AND CORVETTE NOW AT YOUR CHEVROLET DEALER'S

MIDLAND TRAIL GARAGE  
EAST MAIN STREET MOREHEAD, KENTUCKY PHONE 784-5136

only the second loss Boyd County has suffered in three years. In other spring sports, Breck took its first win in history from Clark County week before last, downing the Cardinals 14-13. The Eagles defeated Boyd County Monday, 14-7, to inflict

## Why Pay Rent

when you can own a beautiful new home like this for so little cost and such convenient terms?

## THE EXECUTIVE

Wouldn't You Like To Live In A Compact Home That Never Grows Old?

All the features designed in a Modern Home are built into this beauty.

PICK YOUR OWN FLOOR PLAN

Come in and let us talk with you about your plans for a new home.

Cheep's MOBILE HOMES  
Opposite Cheep Chevrolet FLEMINGSBURG, KENTUCKY  
Open 6 Days A Week And After Church On Sunday

PA  
A:  
E:  
F:  
pa  
cp  
sb  
ye  
pe  
en  
of  
p  
\$1  
\$2  
\$3  
\$4  
\$5  
\$6  
\$7  
\$8  
\$9  
\$10  
\$11  
\$12  
\$13  
\$14  
\$15  
\$16  
\$17  
\$18  
\$19  
\$20  
\$21  
\$22  
\$23  
\$24  
\$25  
\$26  
\$27  
\$28  
\$29  
\$30  
\$31  
\$32  
\$33  
\$34  
\$35  
\$36  
\$37  
\$38  
\$39  
\$40  
\$41  
\$42  
\$43  
\$44  
\$45  
\$46  
\$47  
\$48  
\$49  
\$50  
\$51  
\$52  
\$53  
\$54  
\$55  
\$56  
\$57  
\$58  
\$59  
\$60  
\$61  
\$62  
\$63  
\$64  
\$65  
\$66  
\$67  
\$68  
\$69  
\$70  
\$71  
\$72  
\$73  
\$74  
\$75  
\$76  
\$77  
\$78  
\$79  
\$80  
\$81  
\$82  
\$83  
\$84  
\$85  
\$86  
\$87  
\$88  
\$89  
\$90  
\$91  
\$92  
\$93  
\$94  
\$95  
\$96  
\$97  
\$98  
\$99  
\$100



# IGA says...

## TAKE MOM OUT TO DINNER THIS SUNDAY

Sure we want to sell Mom her food needs, but we know that Mom shops all year for food and she plans and prepares over 1,000 meals for her family each year. So we say again, this Sunday, Mother's Day, take Mom out to dinner.

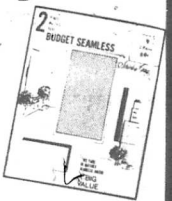
### MOM'S DAY VALUE!

## BUDGET SEAMLESS Nylons

by Shirley Gay

2 PAIR 69¢

Perfectly matched pairs of SEAMLESS nylons by Shirley Gay come in a flattering new spring shade — "SPARKLE." We're especially pleased to offer this amazing value for Mother's Day!



TableRite **SALAD DRESSING** Pint Jar **19¢**

Swift's Fully Cooked

## Picnic Hams

LB. **29¢**



Homemade Pork **SAUSAGE**

lb. **29¢**

PORK LIVER ..... Lb. **19¢**  
SALT BACON ..... Lb. **19¢**  
SPARERIBS ..... Lb. **39¢**  
LOHREY'S THICK SLICED BACON ..... 2 Lbs. **89¢**

Marlene **MARGARINE** Golden Quarters ..... 3 Lbs. **39¢**

Chase & Sanborn **COFFEE** Reg. or Drip ..... 1-lb. Can **69¢**

Pure Shortening **SWIFTNING** ..... 3-lb. Can **49¢**

Martha White **CORN MEAL** Self-Rising 9¢ Off Label ..... 10-lb. Bag. **59¢**

TableRite Instant **DRY MILK** ..... 3-qt. Size **19¢**

Lipton **INSTANT TEA** 1/2 Price Sale ..... 3-oz. Jar **45¢**

Swift's **PREM** ..... 12-oz. Can **39¢**

IGA OvenFresh **BUNS** Hamburger, Hot Dog ..... 8's Pack **19¢**

MuchMore Evap. **MILK** ..... Tall Can **10¢**

IGA Frozen French Fries 9-oz. Pkg. 2 For <b>25¢</b>	Farm Brand Apple Butter Gallon Jar <b>99¢</b>
IGA Frozen Pot Pies Chicken Turkey Beef 5 For <b>89¢</b>	TableRite Instant Dry Milk 3 qt. <b>19¢</b>
Swift's Prem 12 oz. <b>39¢</b>	Strietmann's Cookies 8 29¢ Varieties 4 For <b>\$1</b>
Swift's (24-oz.) Spaghetti With Meat Balls 3 For <b>\$1</b>	11 Flavors Kool-Aid 3 For <b>19¢</b>
Shedd's French Dressing 12-oz. <b>19¢</b>	IGA Sweet Pickles Qt. Jar <b>39¢</b>

THIS WEEK'S SPECIAL **PLATTER** ..... ea. **\$2.49**

**BONUS COUPON** IGA

Norway Leaves **SAUCER**

FREE WITH THIS COUPON AND \$5.00 PURCHASE OR MORE

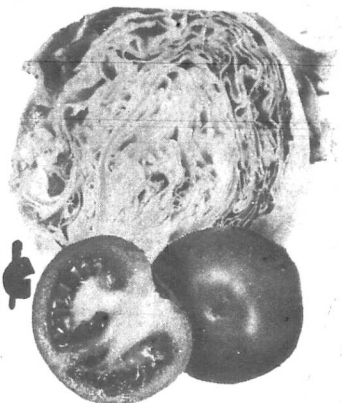
Name \_\_\_\_\_

Address \_\_\_\_\_

Offer Good Thru May 13, 1964.

Limit One Coupon Per Family Each Week

Salad *Fipins* Lettuce



2 FOR **29¢**

The "heart" of any salad is the lettuce. Give your salad a "happy heart" that's Table-Fresh!

Quantity Rights Reserved

RADISHES PEPPERS CARROTS ONIONS ..... MIX or MATCH 4 For **29¢**

LONG GREEN **CUCUMBERS** ..... Each **9¢**

CHERRY **TOMATOES** ..... Qt. Basket **39¢**

Allen's **IGA** FOODLINER

8-6 Mon.-Thurs. 8-8 Fri.-Sat.