

18,000 Readers

This newspaper is read by about every body who has a car in the Commonwealth...

Volume No. 81

Kentucky Press Association

MOREHEAD, KENTUCKY, THURSDAY MORNING, FEBRUARY 27, 1964

Member National Editorial Association

Number Nine

WEEK OF 50¢ TO 10¢ FOR CUTTING NEWS PAPERS ON NEWSSTANDS 10¢ BY MAIL

Large Frame Home Lost In Blaze

Members of a Tolliver Addition family narrowly escaped with their lives early Friday when fire destroyed their large seven-room home...

Hamilton Inks Pact At Salary Increase

Steve Hamilton, assistant basketball coach at Morehead State College during the off-season, Tuesday signed with the New York Yankees at an increase in salary...

No Change Forseen in Leaf Plan

The Agriculture Department has no present plans to suggest any changes in federal production control and price support programs for tobacco, a spokesman said last week...

Lie Tests 'Negative' For 2 Men

A Rowan County man and one from Fleming County have been charged with the robbery of Charles H. Arnold, Maysville beverage distributor, but state police Wednesday said that results of a lie detector test given the pair were negative...

O. H. Harris, Rowan Native Is Claimed

A Rowan County native, Oliver Hayden Harris, died in a St. Augustine, Fla., hospital Saturday following an illness of one day. Harris taught in the Rowan County schools as superintendent of schools in Mt. Vernon, Ky., and Winchester for 30 years...

Chad Mitchell Trio Concert Is Tonight

The rescheduled concert by the Chad Mitchell Trio will be held tonight (Thursday) at 8 p.m. in the Morehead State College gymnasium...

Junior High Meet Opened Wednesday In RCHS Gym

Junior high school basketball teams from five Rowan County schools began play Wednesday night in a tournament to decide the championship of the county...

Breck-RCHS Clash In Opening Tilt Of 62nd District Tourney

Play opens in the 62nd District basketball tournament here next Thursday with Bath County overwhelming favorite to open the championship, but the opening contest may provide more of the fireworks...

Teams slated for berths in the 13th Regional meet week after next. All games begin at 7:30 p.m. in the Rowan County High School gymnasium...

62nd District Tournament Rowan County High School Mar. 5, 6, 7

Table with 2 columns: Region and Date/Time. Includes Breckinridge, Rowan County, Menifee County, and Bath County.

CALENDAR GIRL - Pat Bond, white helping students with registration, was chosen February Calendar Girl at Morehead State College...

Montgomery Indictments Killed Because Negroes Not On Panel

Judge John J. Winn has quashed two indictments against Dave Willie Burns in Montgomery circuit court on the grounds that Burns' constitutional rights were violated because the jury panel which was made up of Negroes and whites was all-white...

Della Williamson, Member Of Pioneer Family Succumbs

A descendant of one of Rowan County's pioneer families, Mrs. Della Hayes Williamson, died last Wednesday in front of O. She was 73.

C&O's New Report Lists Improvement In B&O Position

Chesapeake and Ohio Railway in its 1963 Annual Report out Friday to 100-254 sharroweers, highlights the "dramatic profit improvement" of the affiliated Baltimore and Ohio Railroad...

IRS ARRESTS MANY

The Internal Revenue Service expects to make additional arrests over the next few weeks as it ramps up a campaign to root out corruption in its ranks...

Lower Addition Sewer Contract Is Let Despite \$2,000,000 Increase In Costs

More than 100 Morehead residents this week received special invitations from the city-investors appear in police court and take care of a number of parking meter violation citations...

Easter Seal Drive Opens On March 1

The 1964 Easter Seal campaign, benefiting thousands of crippled children in Kentucky, will be conducted by the Kentucky Society for Crippled Children from Mar. 1 through Mar. 29, Easter Sunday...

Breck Takes Olive Hill By 73-69

Breckinridge Training School won probably its most impressive victory of the season Monday, downing Olive Hill 73-69 in an early 68-82 decision...

Pickup Truck, Car, Tractor-Trailer, Damaged In Wreck For Bankers

Only one automobile accident involving two trucks and a passenger car was investigated in Rowan County this week by Kentucky State Police...

Heart Fund \$1M Will Exceed 200k

Preliminary reports indicate that more than \$200 has been contributed to the Heart Fund campaign in Morehead and Rowan County...

City Invites Citizens And Collects Money

More than 100 Morehead residents this week received special invitations from the city-investors appear in police court and take care of a number of parking meter violation citations...

Evans Rites To Be Held Today At 2

In all health for several years, Claude Evans of Farmers died Tuesday at St. Claire Hospital, where he had been a patient for two days. He was 75...

Breck Takes Olive Hill By 73-69

Breckinridge Training School won probably its most impressive victory of the season Monday, downing Olive Hill 73-69 in an early 68-82 decision...

Pickup Truck, Car, Tractor-Trailer, Damaged In Wreck For Bankers

Only one automobile accident involving two trucks and a passenger car was investigated in Rowan County this week by Kentucky State Police...

Heart Fund \$1M Will Exceed 200k

Preliminary reports indicate that more than \$200 has been contributed to the Heart Fund campaign in Morehead and Rowan County...

Utility Board's Share Of Job Goes To \$47,000

Faced with an increase of about \$30,000 in the cost estimate on construction of sanitary sewers in the Trenton Addition, the low bid contract made—the Morehead Utility Plant Board this week decided to go ahead with the awarding contract on the job...

Lacy Named Ag Chairman For Bankers

H. H. Lacy, vice president of the People's Bank, has been named chairman of the Rowan County Agricultural Bankers Association...

Lacy Named Ag Chairman For Bankers

H. H. Lacy, vice president of the People's Bank, has been named chairman of the Rowan County Agricultural Bankers Association...

Lacy Named Ag Chairman For Bankers

H. H. Lacy, vice president of the People's Bank, has been named chairman of the Rowan County Agricultural Bankers Association...

WANTED

Classified Advertising Rates
 Not Classified Ads Accepted After 12 Noon Tuesday
 Per word each subsequent insertion
 Name ad without any change \$1.00
 Minimum charge (first insertion) \$1.00
 Minimum charge (each subsequent insertion) .40¢
 Display Classified Advertising \$1.00 per line per day
 Entered as Second Class Mailing Matter at Post Office - Morehead, Ky.

FOR SALE
 New home in Tolliver Addition, 10x15 ft. lot. Call 784-5423. c-1

FOR RENT
 Four-room furnished house. Couple only. Phone 784-5380. c-10

FOR RENT
 House trailer for rent. Reasonable. City conveniences. Call 784-4389. c-10

ATTENTION
 If you are planning to install natural gas pipes and appliances get an experienced plumber to do your work. See or call Cecil Landreth, phone 784-4623. We have gas pipes of all sizes, hot water tanks and heating systems in stock. C. L. Landreth Plumbing Shop, Morehead, Ky. c-1

FARM WANTED
 Must be in Rowan County with 3 or so tobacco. Not particularly interested in good buildings. Call Norman Tate, 294-504, 423 Wilson Ave., Morehead, Good deal. c-13

PART-TIME WORK
 Good supplemental income for right man with time available during the day. Man needed to make insurance and employment investigations in Morehead area. Minimum age 21. Must have auto and typing ability and high school education. Write Assistant Manager, P. O. Box 8098, Lexington, Ky. c-2

USED CARS
 '60 CHEVROLET
 4-Door Sedan

'60 CHEVROLET
 Convertible - Standard Shift

'59 CHEVROLET
 5-Door Wagon, 4-Cylinder, 5-Door

'57 FORD
 2-Door Sedan

'57 BUICK
 4-Door Sedan

'56 CHEVROLET
 4-Door Sedan

'55 PONTIAC
 2-Door Hardtop, Automatic Transmission

'50 FORD
 4-Door Sedan

USED TRUCKS

'59 CHEVROLET
 Tractor and Trailer

'56 FORD
 Pickup - Utility Body

'54 CHEVROLET
 1/2-Ton Pickup

'50 GMC
 1/2-Ton Pickup

Midland Trail Garage
 "Pioneers in Rowan County Transportation"

CLOTHING BARGAINS
 Over 700 items of new and used clothes. See at Ferguson Bros. Bargain House, West Main Street. c-1

BALDWIN PIANOS & ORGANS
 Best values in new and used instruments. Easy payment plan. Zwick Music Co., Ashland, Ky. c-1

ADIATOR-BODY REPAIR
 Dodge Keeton's Radiator & Body Shop now located about 2 1/2 miles from Morehead on Flemingsburg Road (across from Thacker's Drive-In). Repair and recore all makes cars, trucks, tractors. All work guaranteed. Phone 784-4611 c-1

DOZER WORK
 Call Douglas Forman, business phone 784-4157 or residence 784-4622. c-1

FOR SALE
 Four-room house in Farmers. See Mattie Howard, Farmers, Ky. c-2

SMALL PIANO
 You may assume small monthly payments of \$14.88 on slightly used 1954 Tenover factory warranty, to new owner. Piano may be seen in your local area. For full details write Credit Manager, Box 8214, Lexington, Ky. c-9

LOST
 Polaroid 800 Land Camera with pink light, light meter and leather case. Call 338-5445. c-10

MALE HELP WANTED
 The writer has a sales position open through factory branch in Lexington. This opportunity should be worth \$7.00 to \$10.00 per week immediately while being instructed in business. Excellent conditions. Investment required. Qualifications are: over 25 years of age, preferably with college education; appearance; able to furnish good references and have a good past employment record. Please send resume about self, phone number, etc. Personal interview assured. Write Sales Manager, P. O. Box 7132, Henry Clay Station, Lexington, Ky. c-10

FOR SALE
 1958 Liberty house trailer, 42x8. Call 784-4265. c-1

FOR SALE
 National cash register. Electric. Call 784-7211. c-1

FOR SALE
 Encyclopedia Britannica, 1958 edition. Twenty-four volumes plus six. Excellent condition. Asking \$185; your offer? Phone 784-8968. c-1

FOR SALE OR TRADE
 1957 Ford, Local, extra clean, 2-door. Call 784-5252. c-1

PIANO TUNING
 Work done by MSC faculty member. Make your instrument sound new again. Homes, schools, churches. Call 784-4948. c-1

SALESMEN WANTED
 Good profits, no investment. Sell used Pattee's "Pain King" ointment and Salve to established customers. Porter's, Box 2807, Piquette, Ohio. c-12

55 WEEKLY AND MORE
 Reliable man or woman to service customers in Morehead. Full or part time. No investment. Write Rubie, Dept. F-3, P. O. Box 2467, Memphis, Tenn. c-9

FOR RENT
 Apartments. Call 784-2213. c-1

FOR RENT
 Two apartments and one house trailer. H. M. Meadows, phone 784-5637 or Mrs. Virginia Manning phone 784-7226. c-1

HOUSE FOR RENT
 On West Main Street. See Charles Blair at Midland Trail Hardware. c-1

REMODELING
 All types. Phone 784-5155. c-11

BEAUTICIAN WANTED
 Kut & Kurl Beauty Salon, Flemingsburg, Ky. phone 845-9101. c-1

IN MEMORIAM
 In loving memory of our dear mother, Mrs. Florence Pultz who passed away Feb. 26, 1964. If we'd give all the world to give, We'd give it all, and more. To hear your voice and see your smile. And greet you at our door; But all we can do, dear mother, is go and tend your grave, And leave behind tokens of our love. To the best mother God ever made - Sadly missed by Husband, Children and Grandchildren. c-9

FOR RENT
 Three-room furnished house. All modern. 1/2-mile from City Limits. Call at Rube's Restaurant, West Main Street. c-1

NEED MONEY FOR EMERGENCY?
 Need money for Easter expenses? Start earning substantial income immediately. Avon Cosmetics has vacancies for capable women with car in Rowan County. Write Lois Leonard, Room 1206, Ashland, Ky. c-9

APPLIANCES
 New and used. Stoves, refrigerators, sewing machines, sweepers. See at Ferguson Bros. Bargain House, West Main Street. c-1

SALESMEN
 Slightly Leads - If you've done any selling or talked to anyone who has, you know that 80% of the problem in selling is "prospecting." Our system eliminates this problem entirely. We provide 5 to 7 "definite" appointments each and every working day for each salesman. This is "no get rich quick" deal, but earnings from \$125 to \$200 weekly for an honest week's work! If you have a car, neat appearance and are not afraid to talk to people who have made an appointment to see you, write for personal and confidential information. Sales Manager, P. O. Box 5637, Louisville 5, Kentucky. c-9

IF YOU WANT
 Buy, Sell or Mortgage
REAL ESTATE
 See Our Sales List For A
 ● HOME
 ● BUSINESS PROPERTY
 ● FARM
 Licensed and Bonded Real Estate Broker

Alpha Hutchinson
 See Our Sales List For A
 ● HOME
 ● BUSINESS PROPERTY
 ● FARM
 Licensed and Bonded Real Estate Broker
 Authorized Mortgage Loan Broker for The Prudential Insurance Company of America.
 Phone 784-5305
 Morehead, Kentucky c-1

Notice To Creditors
 Notice is hereby given that Lena Fraley and Herman Cooper have been appointed as Co-Executors of the Estate of Mary F. Cooper, deceased. All persons having claims against said estate will please present same, properly proved, on or before the 13th day of May, 1964.
 Lena Fraley
 Morehead, Kentucky
 Herman Cooper
 Morehead, Kentucky
 Thomas R. Burns
 Attorney at Law
 Morehead, Kentucky c-10

BREAK UP YOUR COLD IN ONE HOUR.
 If the sniffles and aches are STILL WITH YOU, your best bet at any drug store. Take two BQ-6 tablets each half hour for 3 times to reduce cold misery. You don't wait hours between doses for quick, effective action. NOW at BATTISON DRUG. c-9

FOR RENT
 Two-bedroom house trailer. Close to College. Martindale Furniture Co., phone 784-4470. c-1

FARM FOR SALE
 40-Acre farm (known as Alice Helton Farm) one-half mile from Farmers, Ky. Good 6-room house, 7 tobacco barn. Also a new home with 6 rooms, bath and garage located on US 60, 2 miles west of Salt Lick, Ky. Inquire at Goodpaster Furniture, Salt Lick, or phone 463-3181 days or 674-4961 at night. c-11

Advertisement
 Sealed bids will be received by the City of Morehead and the Morehead Utility Plant Board of Morehead, Kentucky at the office of the Board, until 2:00 P.M. E.S.T. on Wednesday, February 26, 1964, for Contract No. 2 - addition, all according to plans and specifications which are on file at the office of the Charter Engineers, 201 Suisman Street, Pittsburgh 12, Pennsylvania.
 Immediately after receipt of bids, they will be publicly opened and read aloud in the office of the Morehead Utility Plant Board.

WHO SAYS YOU CAN'T BE SUCCESSFUL?
 We know you can. We believe you deserve a chance to prove it to yourself. If you can qualify for this outstanding opportunity, we will reveal to you our proven secrets of a successful career. During your training period, you will receive \$155.00 a week plus bonus. Because our company is growing fast, you may soon find yourself in a highly-paid management position. Yet here is the amazing part. You need not relocate or transfer to find success! Travel limited to 5 days per week, home on weekends if you are a high school graduate, age 21 to 45, own a car in good condition, available for immediate employment and have the courage to grow. APPLY.
 MR. E. BUTLER
 Ky. State Employment Office
 10 a.m. to 4 p.m.
 Thursday, Mar. 5
 Morehead, Ky. c-10

It's No Record School Attendance Up 11,000 In Kentucky Over 1962 Term

The average daily attendance in Kentucky public schools has increased by 11,200 over the same period last year, the Education Department said Friday.
 Attendance in the first two months of the current school year was 631,536 compared with 610,316 in 1962-63. This is a 3.6 percent increase.
 The largest gain came in the largest division of Bowling Green and the biggest drop was 49.2 percent at Liberty in Casey County.
 J. M. Alsip, director of the finance division, said average daily attendance gains over the past five years have ranged from 8,000 to 13,000.
 The additional students in the public school system automatically put in operation the "growth factor" phase of the state's Minimum Foundation Program.
 They represent an extra \$20 million of about \$2.9 million - paid by the state and by more than 200 local school districts.
 The state contributes money for extra classroom units when the pupil population goes up but there are qualifications.
 The local district also must put extra classrooms and it must hire the additional teachers needed to staff the extra classrooms.
 Under the foundation program, enacted 10 years ago, the state has matched local school funds at an average ratio of \$5 to \$2.
 However, the limits on both sides are extreme. For the poorest districts the state contributes more than 90 percent in some instances. The wealthier districts generally receive 50 percent in aid.
 Tentative allotments under the foundation program for the current fiscal year total about \$16 million - of which the state is providing \$107 million.
 But Alsip said the figures do not reflect the full local effort to improve schools.
 It is based on an assumption that local school districts will tax their patrons at least \$3.10 on every \$100 of assessed valuation.
 Actually, Alsip said, many districts are taxing up to the \$1.50 limit and thus raising much of their own school funds.
 Sgt. Leslie Cooper is NCO School Guard
 SSG. Leslie V. Cooper, son of Mr. and Mrs. Vernon Cooper of Morehead, has graduated from the Noncommissioned Officer Preparatory School at Nellis AFB, Nevada.
 Sgt. Cooper was trained in management, leadership, security, human relations and soldier duties and responsibilities of Air Force noncommissioned officers.
 The sergeant, a highly specialist, is assigned to the 4620th Supply Squadron at Nellis AFB, Nev. Sgt. Cooper attended Women County High School.

Cincinnati Firm Plans New Plant
 A new 30,000-square-foot plant for the Muhl Manufacturing Co., Cincinnati, will be built in Providence by the Providence Industrial Association.
 The state contributes money for extra classroom units when the pupil population goes up but there are qualifications.
 The local district also must put extra classrooms and it must hire the additional teachers needed to staff the extra classrooms.
 Under the foundation program, enacted 10 years ago, the state has matched local school funds at an average ratio of \$5 to \$2.
 However, the limits on both sides are extreme. For the poorest districts the state contributes more than 90 percent in some instances. The wealthier districts generally receive 50 percent in aid.
 Tentative allotments under the foundation program for the current fiscal year total about \$16 million - of which the state is providing \$107 million.
 But Alsip said the figures do not reflect the full local effort to improve schools.

FOR QUICK SALE
 Extra nice 74-acre, well improved Blue Grass farm. All tractor land; grows fine crops of all kinds; excellent dairy and cattle farm; 15-cow dairy operation now on the farm; near state Highway No. 59, only 4 miles from Flemingsburg, Ky. Has extra nice 7-room modern brick home; large bath room, with nice equipment; all rooms are well decorated and painted. Full size concrete basement with automatic controlled oil furnace and ample space for car. Everlasting water supply. Electric, telephone, storm windows and doors. Home in excellent repair in every way. Concrete walk to front entrance, on large combination tobacco and dairy barn, 1 tobacco barn, poultry house, cribs, etc. 1964 tobacco base 1.98 acres. Farm well fenced, mail, milk and school bus routes. Farm gladly shown at any time. Very attractive price for quick sale.

W. L. Thomas Real Estate Agency
 "LICENSED AND BONDED REAL ESTATE BROKERS"
 ASHTON L. DENTON, Licensed and Bonded Salesman
 119 Mt. Sterling Avenue Phone 785-4417 or 845-6751
 FLEMINGSBURG, KENTUCKY

SAVE WITH STONE - SAVE WITH STONE -

The Very Best

In automobiles at the very lowest price - backed by the best used car warranty in this area.

1959 BUICK ELECTRA 225
 4-Door, automatic, power steering, power brakes, power windows, radio and heater. In tip-top condition throughout. One owner... Buick's very finest. New car trade in.
 \$1,195.00

1958 CHEVROLET
 6-Cylinder, standard shift, with overdrive, radio and heater, good tires. Excellent in every way.
 \$695.00

1957 CHEVROLET
 4-Door wagon, V-8, automatic, power steering, radio and heater. Good in every way.
 \$695.00

1959 CHEVROLET
 4-Door Bel-Air, V-8, standard shift. Local owner that has given this one A-1 care.
 \$995.00

This Weeks Special -
1956 FORD FAIRLANE
 2-Door, V-8, automatic, radio and heater. Drives out A-1.
 \$395.00

MEMBER
 GUARANTEED WARRANTY
 USED CAR WARRANTY PLAN

"SAVE WITH STONE"
STONE PONTIAC-BUICK-GMC, INC.
 PHONE 784-1937
 Used Cars U.S. 60 East - Morehead, Ky.
 SAVE WITH STONE - SAVE WITH STONE -

ABSOLUTE COTTON

To Settle Estate Of The Late Rushie Martt
SATURDAY, FEB. 29, 1964
AT 2:00 P.M.

RUSHIE MARTT FARM
 175 Acres, mostly bottom land, only one mile from Morehead, Ky. and adjacent to the Clearfield Elementary School, one large frame house, one barn, 2 cribs, tobacco base of over an acre. Will be offered in two different tracts.

Cash Prizes Given Away During Sale -
CLEARFIELD, KY.
 Terms: 10% day of sale, balance on delivery of deed on or before 30 days.
 Cole Dickinson - Executor Elijah M. Hogge - Attorney
 Clearfield, Ky. Morehead, Ky.
 C. Roger Lewis - Auctioneer Alpha Hutchinson - Realtor

SPRING IS JUST AROUND THE CORNER! SEE

Alpha Hutchinson for Real Estate

HOMES

ONE OF MOREHEAD'S better homes. 3 Bedrooms, 3 baths, den, brick and tile construction. Covered and enclosed breezeway and attached garage. Large patio. Well landscaped. Shown by appointment only.

2 FRAME HOUSES WITH BATHS AND 30 ACRES LAND, in Tolliver Addition to Morehead, Ky. Four-room house and 1 five-room house. BOTH RENTED. Good investment. Rent one and live in the other. BOTH FOR A TOTAL OF \$11,500.00.

REAL NICE BRICK, OUTSIDE CITY LIMITS OF MOREHEAD. Good big lot 125 feet front and 150 feet deep. 3 bedrooms, birch trim and birch doors. 2 bedrooms in birch paneled, plenty of built-in cabinets in kitchen. Utility room. 2 ceramic tiled bathrooms, one with tub and other with shower. Covered back porch. Fireplaces, family room, plenty of TV and phone outlets in house. Carpet in living room, dining room and hall. Vent fan in hall. Real nice at \$29,000.00.

BRICK VENEER, 3 bedrooms, 2 baths, kitchen, dining room, living room, den, utility room with garage attached and carport. Drywall, central heat, fireplace — beautiful built-in kitchen. On 62 acre farm, fully fenced. Located approximately 7 miles North of Morehead, just off State Highway No. 32. Priced at \$26,000.00.

MIDLAND, IN BATH COUNTY—Off U.S. Highway No. 60, ten miles West of Morehead, four rooms and bath, with no bath fixtures — two bedrooms, living room and kitchen on good lot 50'x190'. Price reduced to \$1,800. Can assume loan if desired.

NORTH FORK AREA—Ten to twelve acres farm land, one acre hill, balance level; three-room frame house and barn. Land has been recently limed, has 1/11 acre tobacco base, one small pond, good fencing. Priced at \$5,500.

ON ALLEN DRIVE—1 1/2 Story frame dwelling, 7 rooms and bath, two bedrooms up and two bedrooms down with living room, kitchen and dining room. Ceramic wallcovering in bath, window air conditioner goes with property along with venetian blinds. The house has the best storm windows and doors and aluminum awnings. Good shade trees on lot 62 1/2 feet front and 125 feet deep. Priced to sell at \$13,500.

ROCK FORK—North Fork area, on blocktop road, 7 1/2 acres land, almost new 4-room and bath frame dwelling. Built-in kitchen cabinets and sink. Hardwood floors in bedrooms and living room. Priced for quick sale at \$5,700.00.

1 1/2 STORY FRAME DWELLING with bath, 1 car garage. Coal and bottled gas heated. Four rooms and bath finished down stairs upstairs not finished. Sits on 2 1/2 acres land with several fruit trees. Located at Farmers, Ky. Priced for quick sale at \$6,500.00.

FARMS

OVER 200 ACRES in all. One of the best farms in Rowan County. More than 100 acres in good grass, two barns, good frame dwelling, with bath and utility room. 50'x110', 2 at \$25,000 and must be inspected to be fully appreciated.

147 ACRES farm located on Moore Flat between Sharkey and Farmers. .68 acre tobacco base, good fencing, 5-room frame dwelling, Has 20-acre tobacco base. This farm is priced for quick sale. You can make down payment and assume V.A. loan payable monthly.

76 ACRES farm land, approximately one-fourth mile off blocktop road leading from Cranston to Vanceburg. About 7 acres suitable for crops, balance in timber. No buildings, no tobacco base. Located on private country road. Reduced to \$12,250.00.

APPROXIMATELY 350 ACRES, no improvements, no tobacco base, Good timber land. On gravel road. Priced for quick sale at \$5,500.

108 ACRES Elliott County land, near Ilex, Ky. on Mill Branch. Some virgin timber consisting of pine, poplar, oak, walnut and locust. Has not been cut over for over 43 years. Priced at only \$5,000.00.

LOWER LOCKING RIVER, 2 miles below Farmers on blocktop road, 35 acres farm land with 7 rooms and bath frame dwelling, hot and cold water in house, 32x50 barn, one car garage, cellar, smoke house and is well fenced. New pond approximately 1 1/2 acres, 8 acres in new grass, 5 1/2 acres in corn and 1963 tobacco base was .68 acre. Priced for quick sale at \$11,000.00.

90 ACRE FARM, approximately 1/2 mile off Pisgah Road, 30 to 35 acres cleared up land and rest in woodland, 3 acre tobacco base in 1963, 30'x40' barn, 6 room frame dwelling. Priced to sell quick at \$4,000.00.

BUSINESS PROPERTY AND OPPORTUNITIES

BUSINESS & APARTMENT BUILDING on good lot near College & 2nd Street. Three apartments over two store rooms which are 2x50 ft., one cabin one house trailer. Income potential \$242 per month. Reduced. Don't sit and look at this — ACT!

GOOD GOING BUSINESS can be had for under \$10,000. Can be run by man and wife. Approximately \$20,000 equipment is installed in this business and is from new to 4 years old. Health is reason for selling. Their loss will be your gain! If willing to learn, but not afraid to work and you want about \$10,000 a year, don't overlook this one!

GOING BUSINESS in Morehead, well established and making money. Owners want to get closer home with investments. Automatic washer and dryer business. Reasonable rental agreements can be extended. Capable of making you \$100.00 per week or more with investment of \$12,500.00.

CAMP SITES—Approximately 33 miles southeast of Morehead, fronting on Lake Louise in Elliott County. On good blocktop road all the way. These camp sites can be leased. Will be happy to show at any time. Fishing, boating, hiking and lots of fun.

BUILDING LOTS

LOCATED APPROXIMATELY 3 MILES WEST ON U.S. HIGHWAY NO. 60 fronting on the highway 162 feet and running back a distance of approximately 600 feet. Between two beautiful homes priced at only \$5,000.00.

Plenty of other dwellings, farms and business properties in and around Morehead and Rowan County.

SEE ALPHA HUTCHINSON
For Any Kind Of Loan.



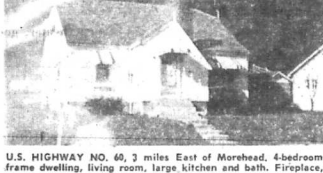
DRY CREEK ROAD, just out of Clearfield, 5-room with bath frame dwelling. Gas floor furnace, 3 bedrooms, kitchen and living room. On good lot 50 feet fronting on blocktop road and extending back a distance of approximately 235 feet. Priced for quick sale at \$6,000.00.



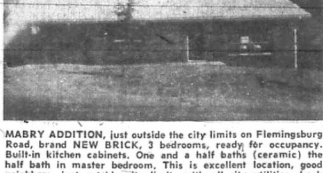
ELLIOTT COUNTY, on State Highway No. 32 approximately 3 1/2 miles from Sandy Hook and 24 miles from Morehead. 1 1/2 story frame, Cape Cod Dwelling, 4 bedrooms, living room, kitchen and family or dining room. Good dry basement. Storm windows, drapes, blinds, carpets in two rooms, almost new stove in kitchen. Built-in cabinets in kitchen. An attractive country home on good lot fronting on blocktop Road 100 feet and extending back a distance of 150 feet. Priced at \$14,000.00.



BARBOUR COURT, Morehead—A very attractive two-bedroom frame dwelling, completely refinished inside and out — just like new on good lot fronting 50 feet and extending back a distance of 150 feet. Storm doors and windows. You have to see this beautifully decorated house to appreciate. You can not beat it anywhere for the price, \$10,000.00.



U.S. HIGHWAY NO. 60, 3 miles East of Morehead, 4-bedroom frame dwelling, living room, large kitchen and bath. Fireplace, storm windows and doors, pump house. Large garden area at back of house. If interested in a lot of room cheap, don't overlook this at \$10,500.00.



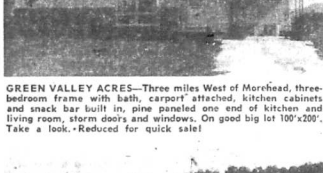
MABRY ADDITION, just outside the city limits on Flemingsburg Road, brand NEW BRICK, 3 bedrooms, ready for occupancy. Built-in kitchen cabinets. One and a half baths (ceramic) the half bath in master bedroom. This is excellent location, good neighbors, just outside city limits with all city utilities. Look this one over if in the market for a nice one well located.



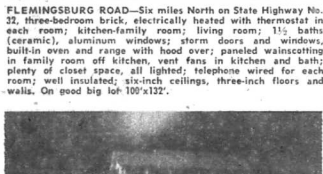
ONE STORY FRAME, breezeway and one car garage, 2 bedrooms, living room with dining area between living room and kitchen. Built-in kitchen cabinets. On 2 good lots 170' front and extending back 155'. Plenty of room for another dwelling on lots. Priced to sell quick.



3-BEDROOM BRICK veneer with carport and outside storage attached. Beautiful built-in kitchen cabinets. Good big lot 100 feet fronting on street and extending back 200 feet. In Green Valley Acres Subdivision, approximately 3 miles west of Morehead, just off US Highway 60. Priced at \$12,800.00.



GREEN VALLEY ACRES—Three miles West of Morehead, three-bedroom frame with bath, carport attached, kitchen cabinets and snack bar built in, pine paneled one end of kitchen and living room, storm doors and windows. On good big lot 100'x200'. Take a look.—Reduced for quick sale!



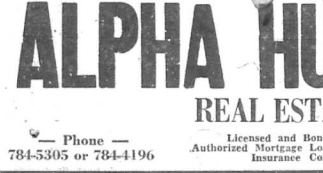
FLEMINGSBURG ROAD—Six miles North on State Highway No. 32, three-bedroom brick, electrically heated with thermostat in each room; kitchen-family room; living room; 1 1/2 baths (ceramic), aluminum windows; storm doors and windows, built-in oven and range with hood over; paneled wallcovering in family room off kitchen, vent fans in kitchen and bath; plenty of closet space, all lighted; telephone wired for each room; well insulated; six-inch ceilings, three-inch floors and walls. On good big lot 100'x122'.



3-BEDROOM FRAME DWELLING, nice built-in kitchen cabinets. House has kitchen, living room and extra kitchen or utility porch. Good cellar, 2 wells, one drilled and one dug. Storm windows and doors. Located 3 miles East of U.S. 60. Good big lot fronting on highway approximately 171 feet. Reduced to \$10,500.00.



2-BEDROOM FRAME with full basement. On good lot fronting approximately 50 feet on West Main Street, Morehead, Ky. Good buy for \$6,000.00.



MODERN 3-BEDROOM frame, ranch type with carport attached. Living room, kitchen, utility and bath. Good lot 75 feet by 90 feet. Good drilled well, natural gas well on lot. Located near Farmers in U.S. 60 Court. Priced at only \$6,000.00.



NORTH KNAPP AVENUE—8 Rooms and bath. Good big lot. Dwelling completely remodeled. All new shutoffs, wiring, flooring and plumbing. Priced to sell at \$14,000.



MAIN STREET—7 Rooms and bath, frame. Living room; dining room, 3 bedrooms, kitchen, breakfast room. Floor furnace, fireplace in living room, metal cabinets in kitchen. One car garage detached. Lot fronting approximately 40 feet on West Main Street and extends back 150 feet to alley for back entrance. Reduced to sell quick \$8,500.00.



BLAIR STREET, MOREHEAD, KY. 3 rooms and bath with full basement. Also, on this lot is business building as is shown in the photo above. Priced for quick sale, house and business building \$10,000.00.



NEW, FRAME AND STONE, off Morgan Fork Road out of Clearfield, Ky. 3 bedrooms, bath, living room, kitchen, carport attached. Floor furnace, aluminum windows, marble sills. Built-in kitchen. Real sharp. Good well in place. Priced for quick sale at \$11,500.00.



FLEMINGSBURG ROAD AND BARBOUR COURT — I am offering for Gladys Johnson, Executor for the estate of Maggie Caskey this very desirable property located on Flemingsburg Road and Barbour Court — street paved on 3 sides of this very desirable lot. Plenty of room for another building on lot fronting on Barbour Court. 2 bedroom dwelling, living room, dinette, kitchen, bath and full basement. Also, there is a small 3 room and bath cottage on this lot. Good investment property with business potential. Priced at only \$11,000.00.

— SEE —

ALPHA HUTCHINSON

REAL ESTATE AGENCY

— Phone — 784-5305 or 784-4196
Licensed and Bonded Real Estate Broker
Authorized Mortgage Loan Broker for The Prudential Insurance Company of America
MOREHEAD, KY.

Tobacco's Trouble Should Be Found And Corrected

Rhetorics create the gallant and swash-buckling Sir Walter Raleigh with starting the American smoking habit more than 300 years ago.

Today an estimated 10 million in this country indulge in one form or other of tobacco.

That being so, it seems imperative that Congress approve and put into operation at the earliest possible moment a government-financed research program to find ways to eliminate the dangers of the habit.

In this case there is a clear and definite federal responsibility to safeguard both the physical and economic welfare of the country.

While it may come as a surprise to many, tobacco provides the livelihood of some 10 million people in various states of production and manufacture.

It is an \$8 billion a year business which produces \$3.2 billion in federal, state and local taxes.

In leaf-producing states it is literally the economic lifeblood of many communities.

Certainly, health should not be put up for barter.

It makes sense, though, to try to find out and correct what ails the goose that laid the golden egg instead of killing it.

Business Is On The Upgrade

Most of the early indications point to a very good year for the business world. Even the stock market is at an all-time high.

Automobile sales have been very good in the first weeks of 1964. Demand for steel is higher than expected.

The number one question for the nation does not seem to be whether business will be good in 1964. Rather, it seems to be whether the tax-cut, which will reduce federal income by over \$11 billion, will prove to be a long-term stimulant.

If the tax-cut does stimulate business, by increasing incentive and allowing more capital to be put into expansion, and by giving most Americans more money to spend, then tax revenues will increase as the national economy grows and expands.

This is the new theory as we are depending on and the vital test for it, and our economy is whether it works out as we think it will in the next two or three years.

One In Ten Die From Strokes

Deaths resulting from strokes have steadily been increasing in the United States and the latest surprising figures show that strokes, or apoplexy, now kill more Americans than any other disease except heart diseases.

Strokes today kill ten out of every hundred who pass away, and some four times as many suffer physical damage because of a stroke.

What can you do? The best simple advice is as follows: 1. Have a thorough physical examination regularly, which includes a check of your blood vessels, your blood pressure and your heart.

2. To avoid high blood pressure, keep your weight down and avoid strain. 3. Watch out for the following symptoms: sudden loss of the head and neck, dizziness and fainting, nerve trouble, nosebleeds and hemorrhages in the retina of the eye.

If a neighbor or loved one suffers a stroke, the best thing you can do for him, or her, is to summon medical attention immediately, and you may save the head of the victim slightly to prevent pressure on the brain.

Job Of Clergy Demanding

While some of us do not realize it, the role of the clergymen in our community has become a role represented by men who have undergone many years of specialized training.

While there are no standardized requirements for the ministry, and never will be, and while such is not desirable, it is nevertheless true that long years of preparation and study are increasingly demanded of our clergymen.

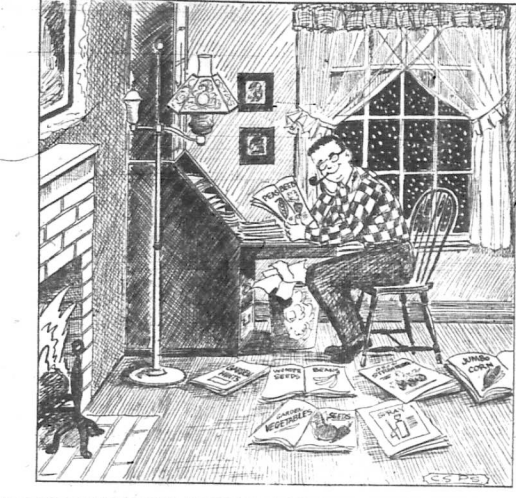
The job itself, which is another thing some people fail to understand, is increasingly demanding one. The clergyman who attends to all his duties, the sorrows, the details, the preparation of inspirational sermons, the counseling and the tending of the many people who need support, advice, comfort or encouragement is working a seven-day week, and often a 24-hour day.

When we consider the training, the study and the experiences which all go into the process of developing a clergyman, it makes us realize that the benefit from their services, and their individual worth, is measureless, and reminds some of us that they are asking us to serve, and that we should take advantage of their counsel perhaps more than we do.

The Morehead News

Formerly Rowan County News "Over 15,000 Readers Each Issue" Published every Thursday at Morehead, Rowan County, Ky. Entered as Second Class Mailing Matter at Post Office, Morehead, Ky. W. E. Crutcher, Publisher. M. J. Wilson, Editor. Mary J. Cavill, Business Manager. Office: Fourth Estate Building — E. Main St. Telephone, 784-1116. When requesting change of address be sure to include old address. Subscriptions Rates: One Two Five Yearly \$5.00 \$9.50 \$15.00 In Kentucky — 4.00 7.50 11.50 No subscription taken for less than one year. All subscriptions payable in advance. None accepted on telephone.

IT WON'T BE LONG NOW



Claig Sprout . . . And His Friend, TIMOTHY TUGMUTTON . . . Sez

DEAR MISTER EDITOR: - This "adult education" drive they been putting on everywhere final got down to the country store Saturday night. The fellow that runs the store pasted a map of Asia up on the wall. He allowed as how he was getting tired of hearing the fellers argue it as to that country was in South America or Africa when it wasn't in neither one.

You will recollect here a while back Zeke Grubb was claiming Vietnam was in South America while most of the fellers claimed it was in Africa. This is to report, Mister Editor, that it is in Asia and all the fellers could see it plum good on the map Saturday night.

Demonstrations May Increase

If a prediction by Senator Paul Douglas (D-Ill.) holds true, the nation can expect more and bigger civil rights demonstrations this year.

The rights-minded lawmaker says the package bill may be so diluted as to be ineffectual after it clears Congress, especially the Senate filibuster hurdle.

While current legislation, with its many sections repugnant to Southern legislators, is the strongest of its kind in the nation's history, some civil rights leaders feel reluctant to play less militant roles, or abandon their political and publicity efforts.

The President is well aware of this fact and is personally pushing an all-out effort in the Senate for the package bill. If he gets the bill enacted, the next test may be face to face to react to mass demonstrations and disorders of those not satisfied with the law. That fact seems certain to come whatever bill is passed.

—Solomon, who advised, "Go to the anti, thou sluggard; consider her ways, and be wise," wasn't himself as wise as he was cracked up to be. Studies show that ants spend a great deal of their time loafing around and twiddling their antennas (or antennae, if you prefer).

A man should never play golf with his boss, bridge with his wife or footsie with an old flame.

Oldsters hope the prediction that food will be made from petroleum products will soon come true, as they would hope that eating such food might stop their joints from creaking.

MEDICAL MATTERS

Properly Planned Hospital Visit Can Be Helpful

By Dr. Herbert B. Hudnut, Medical Director, St. Claire Medical Center. There are different customs in different parts of the world. In some countries it is common for the family to come along to the hospital and stay or "room-in" with the patient.

Sometimes, even here in the United States, doctors and nurses are amazed to find six or more visitors in a patient's room. Hardly anyone is as popular as a patient who is very few visitors. Patients who are very few visitors are usually are emergency patients.

Rules for visiting patients vary in different hospitals. Most recognize however that two visitors per patient at one time are enough. It is always best to ask permission of the patient's family or the nurse if and how visits are restricted.

100 YEARS AGO THIS WEEK Civil War in Kentucky

New Forester Assigned Here By State

By Joe J. Mauk. Charles F. Prather of Hazard has replaced Loy Sharpe as district forester for the Kentucky Division of Forestry's Northeastern District with offices in Morehead.

100 YEARS AGO THIS WEEK Civil War in Kentucky

Legislation Proposed

By Joe J. Mauk. The Kentucky Division of Forestry's Northeastern District with offices in Morehead has proposed legislation to create a new position of district forester.

100 YEARS AGO THIS WEEK Civil War in Kentucky

Legislation Proposed

By Joe J. Mauk. The Kentucky Division of Forestry's Northeastern District with offices in Morehead has proposed legislation to create a new position of district forester.

100 YEARS AGO THIS WEEK Civil War in Kentucky

By Joe J. Mauk. The Kentucky Division of Forestry's Northeastern District with offices in Morehead has proposed legislation to create a new position of district forester.

The Editor's Pen

The Publisher's Gone South; Love Affairs, Derby Neglected

With the publisher of this newspaper falling on the sun-baked beaches of southern Florida, anybody who reads this column regularly will be disappointed to get married or to be sure not to miss the name of the Derby winner going to be sorely disappointed with this offering.

Actually, the name of the mystery couple about whom much has been written and said during the past several months is as much a deep, dark secret from us as is from readers of this column. The publisher just ain't talkin'.

And the Derby horse's going to pick hasn't been settled on, so we've revised shortly before and lost for his sojourn in the salty south.

Conversion To Obit Is Month Or So Away. Based on the people who have asked us our conversion to obit is probably a month or six weeks away.

We've set a tentative target of Mar. 15-Apr. 1 for finally getting into it, but it may be slightly later than that.

Legislator's Secrets. Although Rep. "Pete" Nichols of Greenup County has been one of the state's best kept secrets for many years, it took a resolution introduced in the General Assembly to reveal one of the Democratic legislator's habits, about which we know nothing.

It seems that Nichols and Rep. Albert Dempsy of Martin County live together, while they're in Frankfort and Dempsy soon tired of Nichols' involuntary habit of waking him up in the middle of the night.

It was involuntary because Nichols' snoring is so loud that he doesn't know he was doing it and vehemently denied that it was happening.

In desperation, then, Dempsy, grumpy from loss of sleep, introduced a resolution to reveal one of the Democratic legislator's habits, about which we know nothing.

For good measure Dempsy also asked that Nichols be restrained from further referring to House Majority Leader Mitchell Denham as "the House Minority Leader."

Nichols had become popular because Denham, a Democrat, joined with Republicans in the House to defeat a judicial restricting bill which he had offered.

It seems that only voters against the bill offered by his Democratic colleague but made a speech on Feb. 11.

Since that time when Nichols has had occasion to refer to Denham, he has invariably started with "The House Minority—I mean Majority Leader control."

Fortunately, with more serious things to occupy its time, the House rejected Dempsy's resolution, apparently on the premise that what Nichols does in bed is his own business and that Dempsy's insinuation could be remedied by parting company with the freemason.

You Just Can't Win 'Em in OVC. Morehead's Eagles will wind up the 1963-64 season with their worst loss in school history at the hands of the Ohio Valley Conference.

Until this season, Coach Bob Laughlin's team had never lost more than three OVC games in a cage year. Thus far, they've dropped five and are completely out of contention for the NCAA.

100 YEARS AGO THIS WEEK Civil War in Kentucky

By Joe J. Mauk. The Kentucky Division of Forestry's Northeastern District with offices in Morehead has proposed legislation to create a new position of district forester.

100 YEARS AGO THIS WEEK Civil War in Kentucky

By Joe J. Mauk. The Kentucky Division of Forestry's Northeastern District with offices in Morehead has proposed legislation to create a new position of district forester.

100 YEARS AGO THIS WEEK Civil War in Kentucky

By Joe J. Mauk. The Kentucky Division of Forestry's Northeastern District with offices in Morehead has proposed legislation to create a new position of district forester.

100 YEARS AGO THIS WEEK Civil War in Kentucky

By Joe J. Mauk. The Kentucky Division of Forestry's Northeastern District with offices in Morehead has proposed legislation to create a new position of district forester.

100 YEARS AGO THIS WEEK Civil War in Kentucky

By Joe J. Mauk. The Kentucky Division of Forestry's Northeastern District with offices in Morehead has proposed legislation to create a new position of district forester.

playoff spot which they've occupied three times in the past. But—wait till next year when a couple of the hot new cagers on the front-line team become reality members and are available to supplement what remains of this year's team to be sorely disappointed with this offering.

We're not making any predictions. Just wait till next year.

Constitution Group. Several reports have come to us that the make-up of the group which is to write a model constitution for Kentucky is considered less than ideal.

Our friend, Jesse Alverson, publisher of the Paris Daily Enterprise, told us on the telephone the other day that people in his area are highly upset because Phil Smith's Jackson was chosen to represent the district.

It seems that the selection was made on the basis of one delegate rather than the greater one and the first in the district in which Bourbon County now lives will be changing to the new district.

It is possible that the change is not effective until next year.

It is possible that the change is not effective until next year.

And the powers that be at the state's largest newspaper, The Louisville Courier-Journal, reportedly are unhappy because Harle Crockett is the new chairman of the assembly.

Only the day before, the Louisville Courier-Journal reported that the choice of a political leader to head the convention was a heavy task. If there was ever a national political leader in Kentucky it's Harle Crockett.

And the fact that delegates to the assembly figuratively thumbed their noses at the influential newspaper in picking Crockett apparently isn't going over too well at State and City Hall.

We've heard some grumblings about the assembly, too, but most of them are personal and repeating them here would serve no good purpose.

City Officials Have Reason To Be Perturbed. A potentially dangerous situation developed Tuesday as a result of a fire on Fleming-Ash Road, near the intersection of Fleming Avenue.

Discerning readers will realize that this is the immediate vicinity of St. Claire Hospital. Traffic in the area immediately became as heavy as not only were firemen prevented from doing as effective a job as they might have, but any entrance to St. Claire were blocked, both by moving traffic and parked vehicles.

Had an emergency requiring quick access to St. Claire Hospital, it would have been difficult because of improperly, illegally and thoughtlessly parked vehicles, not to mention spectators moving along slowly in their cars.

We respectfully submit that the fire department should have been more strategically placed tickets, coupled with a few staff fines for activity of this nature during this kind of contest to minimum.

100 YEARS AGO THIS WEEK Civil War in Kentucky

By Joe J. Mauk. The Kentucky Division of Forestry's Northeastern District with offices in Morehead has proposed legislation to create a new position of district forester.

100 YEARS AGO THIS WEEK Civil War in Kentucky

By Joe J. Mauk. The Kentucky Division of Forestry's Northeastern District with offices in Morehead has proposed legislation to create a new position of district forester.

100 YEARS AGO THIS WEEK Civil War in Kentucky

By Joe J. Mauk. The Kentucky Division of Forestry's Northeastern District with offices in Morehead has proposed legislation to create a new position of district forester.

100 YEARS AGO THIS WEEK Civil War in Kentucky

By Joe J. Mauk. The Kentucky Division of Forestry's Northeastern District with offices in Morehead has proposed legislation to create a new position of district forester.

100 YEARS AGO THIS WEEK Civil War in Kentucky

By Joe J. Mauk. The Kentucky Division of Forestry's Northeastern District with offices in Morehead has proposed legislation to create a new position of district forester.

100 YEARS AGO THIS WEEK Civil War in Kentucky

By Joe J. Mauk. The Kentucky Division of Forestry's Northeastern District with offices in Morehead has proposed legislation to create a new position of district forester.

100 YEARS AGO THIS WEEK Civil War in Kentucky

By Joe J. Mauk. The Kentucky Division of Forestry's Northeastern District with offices in Morehead has proposed legislation to create a new position of district forester.



SAVE ON FERTILIZER

Ohio Valley Fertilizer, Inc.

5-10-15s Bulldog Brand	\$56.50	
5-10-20s Bulldog Brand	64.50	
Bagged—Ton Price		
5-10-15s Golden Leaf Grower	58.90	
5-10-20s Golden Leaf Grower	68.40	
6- 6-18s Golden Leaf Grower	59.80	
6- 6- 6s Golden Leaf Grower	49.95	
5-10-15s Super Golden Leaf		62.75
6-12-18s Super Golden Leaf		71.95
8-10-15s Super Golden Leaf		68.30
10-10-20s Super Golden Leaf		79.55

Guaranteed — Nitrogen, Phosphoric Acid, Potash, Calcium Magnesium and Sulphur content.

10-20-20M Hi-Analysis (Pellets) 83.00
20-20-10M 86.00
22-2-0 95.00
16-16-16M 86.25

Also SHIPPED DIRECT IN 30 TON CARS

12-12-12 Muriate Granular	70.90
10-10-10 Muriate Granular	61.15
6-24-12 Muriate Granular	76.80
6-12-12 Muriate Granular	56.80
6- 6-18 Muriate Granular	55.25
5-20-20 Muriate Granular	73.00
5-10-10 Muriate Granular	49.60
4-12- 8 Muriate Granular	48.10
3-12-12 Muriate Granular	48.75
3- 9-18 Muriate Granular	51.15
3- 9- 6 Muriate Granular	42.60
0-20-20 Muriate Granular	63.95
0-20-20 with Borate 100 lbs.	69.95
0-10-30 Muriate Granular	61.40
0-10-30 with Borate 100 lbs.	67.40

Above Prices Are Delivered To Farm
Liberal Trucking Allowance If Taken At Plant By Your Truck
Early Discounts Also Allowed Off These Prices.

4-16-4s Plant Bed Special	50 lb. bag \$1.40
4-16-4s Plant Bed Special with Aldrin	50 lb. bag \$2.70
80 lb. bag \$2.70	50 lb. bag \$2.00
HiNite Tankard 12% Ammonia	
(Organic Nitrogen For Tobacco Beds)	
50 lb. bag \$1.95	

Fertilizer Materials and Compound Prices

Following Is Delivered At Plant	
Bagged—Ton Price	
Sulphate of Potash Magnesium	\$47.50
Potash — 50% Sulphate	69.90
Potash — 60% Muriate	54.00
Potash Nitrate 15-0-14 Sulphate	77.50
Potash Nitrate 13-0-44 Sulphate	105.00
Phosphate Nitrogen 21-53-0	122.50
Phosphate Nitrogen 18-46-0	103.00
Phosphate Nitrogen 25-23-0	97.00
Sulphate of Ammonia 21% Nitrogen Pellets	54.00
Cyanamid 21% Nitrogen Pellets	77.50
(Contains Calcium — Kills Weed Seeds)	
Urea 45% Nitrogen Pellets	105.00
Ammonium Nitrate 33½% Nitrogen Pellets	78.00
Spencer, Aeroprills, Arcadian, Ortho and High Density Brands, Ammonium Nitrate Phosphate 30-10-0 (Pellets)	96.50
20% Superphosphate	38.50
47% Triple Superphosphate	73.50
64% Calcium Metaphosphate (Crystals)	97.00
Borate, contains Boron	7½c lb.
Manganese Sulphate	15c lb.
Copper Sulphate	25c lb.
Iron Oxide	5c lb.
Zinc Sulphate	18c lb.
Cobalt Sulphate	60c lb.
Extreme Blend (Extra Elements)	7c lb.
(Contains Copper, Magnesium, Boron, Manganese, Zinc, Iron, Calcium and Sulphur)	
May be added to any Analysis Fertilizer on request.	
Liquid Nitrogen 44% Nitrogen ton	85.00
(Contains Ammonium Nitrate Anhydrous Ammonia, Urea)	
(This price is about 9c per pound of pure nitrogen)	
Sulphuric Acid 66 Baume ton	\$35.00
Aldrin 25%	\$5c lb.
Granular or Liquid or Coted on Fertilizer	
Dolomite (Calcium Magnesium) ton	\$30.00

Fertilizer Sold in Bulk \$2.50 Ton Off

FREE SOIL TESTING

Bulk Fertilizer spread by truck \$1.00 Acre

Ohio Valley Fertilizer, Inc.

LOCAL OWNED FACTORY — TRADE HERE AND SAVE
EARLY DISCOUNTS STILL ALLOWED

Phone 564-3353 Maysville, Ky.

Editor's Pen—

(Continued from page four.)
schools.
There's probably not a person among us who can't remember when these titles almost invariably sounded up in factious between partisans of the two teams. But, it is hoped such will not be the case next week.

Even though it ends the season for one of them, Commissioner Ted Saindon may possibly have a party which will extend into next season if untoward activity takes place.
And, of course, the schools and the community suffer from the bad publicity.

These Reports Prove To Be Rumors
Despite insistent denials from responsible officials, the rumor still persists that the routing of 144 through Rowan County has been changed, will be changed or at least has not been approved.

We refer those responsible for these reports to a letter from Commissioner of Highways Henry Ward which was published in this newspaper several months ago. The commissioner said in writing, at that time, that the originally announced route is the one which his department is planning for in this section.

And those who know the commissioner realize that he is not given to making rash, inaccurate or ill-considered statements. Too, when the commissioner makes up his mind, it's difficult to change.

Small-of-the-week — that exuding from Miami Beach after Tuesday night's "fight."
Week's most disgusting story — the "wrestling" match between Roy Julian Carr of Paducah and House Majority Leader Dr. Mitchell Denham, Class second, in W. W. C. at the University of South East Miller in the nose. "There seems to be more activity in the nose than there was in Miami Beach."

Ranger's Column—

(Continued from page four.)
area, especially during periods of wild weather.
During the next month or so many tobacco growers will be preparing seed beds for tobacco plants. In order to reduce the amount of work required for preparing these beds and get away from the use of fire for sterilization, many growers have gone to the use of methyl bromide gas. There are two different methods in which the gas may be used. Most of the county agricultural extension agents have bulletins for distribution on use of the gas and they will be glad to answer any questions on its use.

Any land owner using fire to sterilize your plant bed you should locate it as far from your grass, leaves or other inflammable material as possible. Burn on a calm day after 4 p.m. and have water, tools and plenty of help on hand to take care of the fire.

GLAD TO OBLIGE!
save-by-mail postage... round trip

PAID BY US

GET your mail save-by-mail material next time you visit us. From then on, we'll keep you supplied with postage-paid envelopes so you can add to your profitable savings account the convenient way, any time!

4% current rate per annum

FIRST FEDERAL SAVINGS AND LOAN ASSOCIATION OF MOREHEAD

MAIN STREET MOREHEAD, KY.

Ohio U. Clips Morehead 85-67; Akin Leads Eagles With Thirty

A strong Ohio University five-apparently headed for the championship of the Mid-American Conference and a spot in the NCAA playoffs—inflicted its second defeat of the season on Morehead here Tuesday, 85-67.

Leading from the outset, the Bobcats were paced by forwards Tom Eber and Mike Haley, with 20 and 19 points respectively.

Tail Henry Akin collected 41 points for Coach Bob Laughlin's Eagles, who hit 31.4 percent from the field. Ohio U. scored on an 82.2 percent of its shots.

The loss dropped Morehead's season's record to 9-9, leaving the Eagles with games against OVC opponents, East Tennessee, Eastern and Murray in which to insure a winning season.

Harold Seeger pumped in 26 points for Morehead against Austin Peay Saturday night, but was unable to help the Eagles to victory in an overtime contest. Austin Peay won 88-83.

Henry Akin and Roy Ware followed Seeger in scoring for the Eagles with 23 and 13 points respectively. Steve Miller, a pro prospect, scored 12 points, and Doug Stimpert were high for Austin Peay with 25 and 24 point totals.

The win gave Austin Peay a 12-8 overall non-loss record and 5-8 in the O.V.C. Morehead is now 9-8 overall and 5-4 in conference play.

The score was tied at 75 at the end of regulation play.
Morehead's Eagles will wind up the 1963-64 schedule by visiting East Tenn. and then returning home to host Eastern and Murray.

Saturday, Morehead will visit the Buca of East Tenn. in hopes of avenging a heartbreaking loss earlier this month by a 79-68 count on the Eagles home floor.

Again Morehead will be facing such fine players as Cliff Gibson, Houston Franz and Willie Malone, who all aided greatly to their win in the first game.
The Eagles will be at a slight disadvantage by being off their home court, but in sight of various added factors, the Buca will be, for some trouble.

Eastern
Three days later the Eagles return to the hardwood here to host Eastern Kentucky.
Coach Jim Baerwald will be bringing his well-balanced squad to Morehead in hope of a win to make up for their 77-73 loss to the Eagles at Richmond the beginning of this month.

Coach Laughlin and the Eagles, playing a zone defense, topped the highly-rated Maroons and proved that ratings were only something written on paper.

Carrying a fine group of sophomores, Coach Baerwald will be going all out for his second meeting of the season with Morehead.
In uniform for the Maroons will be rebounding ace Eddie Bolden and Bob Tolan. Both of these boys are also definite threats for scoring honors. Lee Lemos and his running mate at guard Herman Smith, who are both double figure men, will be hard to keep out of

the scoring column.
After three days' rest, Coach Bob Laughlin will be flooring his 1963-64 non-buffers for the final time in a weekend tilt with the Murray State eagles.

Victor Morehead and playing his last game here will be ALL-OVC Jim Jennings. Jennings was also chosen last year on several honorable mention All-American Teams.

Jim scored 24 points in their January meeting, sinking 14 of 18 free throw attempts. He also grabbed 14 rebounds in Murray's 102-88 win over the Eagles.
Coach Cal Luther will be relying heavily on his sophomores to aid Jennings and the other veterans in a try to overcome the Eagles in their final game.

Bowling Results

Ridge Runner	
Team	W L
Pierre Variety	13 5
Jarrett Manaf	10 8
Furniture Mart	10 8
American Health	9 9
Best Coin Machine	7 11
Peppis Cola	5 12
High single, Larry Wilson (284); High team, Pierre Variety (998); High series, Larry Wilson (669); High team series, Pierre Variety (276).	
8:30 Scratch	
Team	W L
Rucker & Laycock	4 0
Uhl & Black	4 0
Lewis & Hundley	3 1
Thompson & Wilson	2 2
Crosser & Bahman	2 2
Armstrong & Castle	2 2
Bumgardner & McBrayer	1 3
Jordy & Toole	0 4
Shipes & Shipes	0 4
Hamilton & Fisher	0 4
High single, Jeff Laycock (202); High team, Lewis & Hundley and Rucker & Laycock (880); High series, Wayne Hundley (547); High team series, Lewis & Hundley (4082).	
Hap-Hazard	
Team	W L
Peppis Bank	46 14
Wally Chevi	49% 12%
Calvert's Garage	38% 21%
Morehead City Co.	33 27
Moradine & Crager	30% 3%
Litton Ford	27 33
LI' Abner's	27 30
Bainbo Bread	26 34
Jim's Haberdash	25% 34%
Choke-ups	23% 36%
Ry. Finance	20% 36%
Edco Inc.	20 40
High single, Will Morris (220); High team, Calvert's Garage (881); High series, Will Morris (621); High team series, Peppis Bank (4082).	
Friday Kat	
Team	W L
Cardhill Ashland	52 28
Commonwealth	51 29
W's Jewelry	46 32
WRA	47 33

Yes, you can own a home like this!

THE Liberty Special

For those who prefer traditional decor we show below an example of our Special "Early American" living room with front dining room. Attention to detail gives this model a feeling of graciousness and relaxation. This, too, at a Special low price.



NO OTHER MOBILE HOME CAN MEASURE UP TO LIBERTY FOR TIME-TESTED LIVABILITY

Every inch a Beauty and every inch a LIBERTY in the Time-Tested Tradition...

Feature for feature the SPECIAL is the greatest value in LIBERTY HOMES history...

The LIBERTY SPECIAL is priced below all competitors.

Each of our coaches are individually displayed, decorated, and landscaped so you can see exactly how it looks on your lot.

If you don't compare prices at CHEAPS before you buy, we'll both lose money.

43 New Coaches in Stock for you to pick from



GOLDE'S LEAP YEAR SPECIAL DAYS

The extra day that Leap Year brings adds a day for extra special savings at GOLDE'S LEAP YEAR SALE. We "propose" to save you more with values all through the store for you, your family and home. If you're smart, you'll leap right down here early.

LINGERIE
Ladies' Flannel GOWNS 87c
Ladies' Nylonized HALF SLIPS 2 for \$1.00
Ladies' PANTIES Sizes 5, 6 & 7 4 pairs 88c

Girls' & Ladies' Triple Roll BOBBY SOCKS 4 prs. 88c
Large Size Sofa PILLOWS 84c
BOY'S COTTON WASH 'N WEAR DACK OR BELT LOOP MODEL PANTS 2 pairs \$5.00
New Spring Colors — All Sizes

Large 30x60 & 27x48 Chenille THROW RUGS 8 Colors To Choose From Non Skid Back — Machine Washable \$1.81 each

Also Large Size Chenille THROW RUGS 2 for \$1.00
1 Large Group Ladies', Girls' & Boys' FLATS & OXFORDS pr. \$2.00 Values to \$5.95
Girls' Cotton — Sizes 2 to 14 SLIPS 2 for \$1.00

Children's Cotton — Sizes 2 to 12 PANTIES 1½c pair
1 Large Group Ladies' BLOUSES COTTON OR KNIT 77c each

Golde's Has Just Received A Shipment of New TOBACCO CANVAS
GOLDE'S DEPT. STORE
MAIN STREET MOREHEAD, KY.

Golde's 9x100 AA	\$ 7.95
Golde's 9x100 AAA	\$ 9.95
Golde's 9x100 AAAA	\$10.95
Golde's 9x50 AA	\$ 5.95

US 60 HOMEMAKERS GUESTS OF MRS. COMBS

Members of the US 60 Homemakers Club were guests at the home of Mrs. Martha Combs for the regular meeting Feb. 18.

Mrs. Combs gave the monthly report. Mrs. Frances Buckley read the secretary's minutes. Mrs. Shelby Jones was named reporter and Mrs. Marjorie Rose, newspaper reporter.

Members volunteered to bake cherry pies for the 4-H Council's annual Washington's Birthday dinner last Friday evening.

The club's next meeting will be Mar. 17 at 7:30 p.m. at the home of Mrs. Evelyn N. Allen Drive.

Mrs. Marianne H. Rose and Miss Susan Sturt, drove Sunday afternoon to Ironton, O. to help celebrate the second birthday of Carolyn Ann Mitchell, daughter of Mr. and Mrs. Richard H. Mitchell.

Huntington, W. Va. The party was held at the country home of Carolyn Ann's grandparents.

ROWAN WOMAN'S CLUB WILL MEET TUESDAY

The regular meeting of the Rowan County Woman's Club will be Tuesday evening, Mar. 3, at the Health Center, West Sun Street.

The Education Department will have charge of the program. Mrs. Albert Todd, guest speaker, will discuss physical fitness.

SURPRISE PARTIES HONORS BIRTHDAYS

Several friends gathered Saturday evening at the home of Mrs. Nathan Workman for a surprise party honoring the birthdays of Mrs. Hattie McKeehan and Mrs. Glenna Workman.

Guests were Mr. and Mrs. Elisha Caudill and son, Mrs. and Mrs. Blanchard Thomas and son, Mr. and Mrs. Robert Workman, Mrs. Wanda Horton and children, Mrs. Blandina Cogswell, Mrs. Gertrude Hall, Mr. and Mrs. Clyde Workman, Mrs. Pauline Baird, Mrs. Annie Stanley, Mrs. Flo Waldridge, Hick McKenzie, Harmon Workman, Mr. and Mrs. Bill Evans and son, Mrs. Anna Spencer, Loretta and Maurine Hall and Vicki and Pam Workman.

MISS WELLS BRIDE OF ROBERT E. MOORE

Miss Carolyn Wells of Sandy Hook, announces the marriage of their daughter, Carol, to Robert E. Moore, son of Mr. and Mrs. Ray Moore, Morehead.

The wedding was solemnized Thursday afternoon, Feb. 20, at 4:00 P.M. at the First Baptist Church with Rev. Ted Greene officiating.

Miss Studly Fanning, Sandy Hook, and Mike Moore, the bridegroom's brother were the couple's attendants.

The bride has been employed as a secretary for Mico Manufacturing Co. in Sandy Hook. Mr. Moore connected with Moore Trucking Co., Morehead.

ROWAN EDUCATION ASSOCIATION MEETS

The Rowan County Education Association met Thursday at Rowan County High School cafeteria with Mrs. Lois W. Carter presiding.

Vernie Horne, Kentucky Education Association director of public relations, was speaker at the dinner meeting.

CLUB DEPARTMENT HAS BRIDGE PARTY

The Education Department of the Rowan County Women's Club met Feb. 18 at the home of Mrs. James Williams for the annual bridge party.

Members of the Clearfield Homemakers Club met Monday evening at the home of Mrs. Phyllis Baldridge for the current session.

Others present were Mrs. Bessie Switzer, Mrs. Florence Mitchell, Mrs. Ethel Black, Mrs. Viola Workman, Mrs. Regina Riggsby, Mrs. Mary Ann Moore, Miss Caudill and a guest, Rhonda Blair.

Miss Sheila Canan of Mt. Sterling was the weekend guest of Miss Karis Kellen.



DIET DATA - Mrs. Paul J. Reynolds, left, and Mrs. Robert Needham, second from right, confer with information on the diets of patients who were examined at a heart clinic held at the Rowan County Health Center last Wednesday.

37 Patients From 11 Counties Referred To Heart Clinic Here

OES District Meeting Scheduled March 7

Thirty-seven patients from 11 counties were examined by physicians here last Wednesday in another annual series of free diagnostic clinics for heart patients.

Mrs. Harriett Dotson, area nutritional for the State Department of Health, said the number of patients is believed to be the largest ever to take advantage of the service.

Persons who attend must be referred to it by their family doctors. Professional people who served during the day included Dr. Herbert B. Hutnutt, medical director of St. Claire Medical Center and four doctors from the University of Kentucky Medical Center.

Mrs. Dotson said diet histories on the patients were taken by Mrs. Paul J. Reynolds, Mrs. A. Robert Needham, Mrs. J. K. Smith and Mrs. William C. Lane, all of whom have degrees in home economics. She pointed out that because of their training their summaries of the diet histories of the 37 expedited evaluation of each patient's diet in a manner which is unusual for a clinic handling so many patients.

Mr. and Mrs. David Hybert spent the weekend visiting his parents, Mr. and Mrs. Bernard Hybert in Zanesville, O.

Mr. S. H. Sharpe has returned to her home in Sumter, S. C. after a visit with her daughter, Miss Emily Sharpe who attends Morehead State College, and with Dr. and Mrs. Hattie Sharpe and family.

Fred Hayes of Battle Creek, Mich. called here by the telephone of a relative, Mrs. Della Williamson, was the guest Friday and Saturday of his cousin, Miss Hil-dreth Maggard.

Mrs. Lawrence Adams and child, Mrs. Lee and Larry Adams of Hamilton, O. visited Thursday to Sunday with her parents, Mr. and Mrs. Glen Boosook.

Miss Jayne Shedeagar spent the weekend in Lexington, a guest of Miss Jane Ritchey.

Mr. and Mrs. Steve Heilbrun of Cincinnati visited over the weekend with her mother, Mrs. C. E. Waltz and other relatives here.

Mr. and Mrs. Russell Barker had as their guests over the weekend their daughter and family, Mr. and Mrs. Kenneth Wheeler and children, Neel, Jimmy, Lella Alice and Jerry Glenn of Ashland.

Mrs. Mayme Wiley is visiting this week in Frankfort with her daughter and family, Mr. and Mrs. James Ewalt and children.

Mrs. Wanda Williams, district deputy grand matron, and Mrs. Marvin Gales attended initiation for ten Order of Eastern Stars members Saturday evening at Russell.

Miss Nancy Caudill visited from Sunday to Tuesday in Mt. Sterling with Mr. and Mrs. Michael Roberts.

Among those from Morehead attending the Morehead-Marshall basketball game at Huntington last Tuesday were Mr. and Mrs. Robert Day, Dudley Caudill, Miss Lynn Thompson, Mrs. Mary and Mrs. Bob Laughlin, Mrs. Margaret Dunlap, Dr. and Mrs. C. Marsh, Mr. and Mrs. Paul Jackson and Russell McClure.

Mr. and Mrs. Joe McKinley of Maysville spent the day Sunday with her parents, Mr. and Mrs. C. Dudley and with his sister, Mrs. W. H. Layne and Leanne. Mr. and Mrs. David Blair had as their Sunday guests their daughter and family, Mr. and Mrs. Charles Whitaker and children, Scott, Carla and Maria of Malone. Mrs. Marvin Taylor spent last weekend visiting in Columbus, O. with her daughter and family, Mr. and Mrs. Ronnie Tucker and children.

Mrs. Adron Doran, president of the Kentucky Federation of Women's Clubs, spent Wednesday and Thursday in Louisville making plans for the federation's spring convention. She was accompanied by Mrs. Ernest Palas of Richmond.

Rev. and Mrs. Victor Lackey who have been residing in Middletown, O., recently moved here and are making their home with Mr. and Mrs. Roscoe Hutchinson. Mr. Lackey is a retired minister of the Church of God.

Mrs. Everett Fralley and Mrs. Ora Fralley spent Tuesday in Lexington visiting with the former's daughter, Miss Caroline Fralley, and her son and family, Mr. and Mrs. Fred Fralley and son, James Allen.

Mr. and Mrs. E. E. Bayless spent Sunday in Dayton, O., guests of Mr. and Mrs. Charles Arnold. Mrs. Joseph Keelher of Flushing, N. Y. has arrived for a visit with her mother, Mrs. Paaton Davis and family.

Order of Eastern Star officers for the District 4 School met Sunday at the Morehead Lodge Hall for a practice session.

E. D. Patton returned Monday from a two-week visit in Gary, Ind. with Mr. and Mrs. M. Johnson.

S/Sgt. and Mrs. Bert M. Crisp left Monday for England AFB, Alexandria, La., where they and family. Mrs. Crisp has been with daughter, Mrs. Charles Fralley, and Fannie Jr. for the past three months.

Rev. G. C. Banks was in Maysville Monday to conduct funeral services for Mr. Addison Everett. He spent the night and Tuesday in Mt. Orab, O. with his daughter and family, Mr. and Mrs. Scott Schindel and children.

Mr. and Mrs. Roy Corneet visited Sunday in Huntington with his brother, Ward Corneet who is a patient in St. Mary's Hospital.

Dr. and Mrs. J. K. Smith and children, Ken and Leslie were weekend guests of Mr. and Mrs. Fayette Smith in London.

Mrs. Rex Chaney and little daughter, Jennifer spent the weekend in Lexington, guests of her parents, Mr. and Mrs. Royal Brown.

The regular meeting of the Rowan County Primary Teachers has been postponed to Mar. 5 and will be held at Clearfield School.

Mrs. Curtis Hallon of Mt. Sterling is visiting this week with her daughter and family, Mr. and Mrs. Michael Keller and daughter.

Mr. and Mrs. J. M. Clayton returned Sunday from a two-week vacation in Tallahassee and Gainesville, Fla.

Jim Gross of Lexington was the weekend guest of Mr. and Mrs. C. E. Hibbard.

Lions To Rehearse For Minstrel

First rehearsals for the annual Morehead Lions Club minstrel will be held Sunday at 2:30 p.m. in the Breckinridge Training School auditorium.

The affair is scheduled for presentation on Apr. 2 and 3.

Miss Kincer is a graduate of Breckinridge Training School where she received Beta Service, Citizenship, and Danforth awards. She is a member of the freshman class at Berea.

PATRONIZE YOUR ADVERTISERS

St. Claire Hospital 784-4161

Admissions: Feb. 19 - Mrs. Melvin Hardin, Morehead; Ben R. Dotson, Morehead; Mary D. Hill, Morehead; Michael Barker, Olive Hill; Claude Evans, Farmers.

Births: Feb. 23 - Mr. and Mrs. Melvin Hardin, son; Feb. 23 - Mr. and Mrs. Rolla Faulkner, daughter.

Dismissals: Feb. 19 - Mrs. Earnest Wilson and son, Nina Caudill; Ray Plank, Marie Edington; Levi Gregory.

Deaths: Feb. 21 - Ben R. Dotson; Kimbly Waggoner, Rome Kids; Jeff Frey Wells.

Deaths: Feb. 21 - Mrs. Melvin Hardin and son, Florence Knapp; Mrs. Rolla Faulkner and daughter, Mildred Denton; Myrtle McFrayer; Mary D. Hall; Kenneth Jones.

Deaths: Feb. 23 - Evelyn West, Judy Menz; Elizabeth Oatts.

Deaths: Feb. 24 - Oscar Jackson; Geneva Duncan; Chester Ray Craft; Feb. 25 - Pearl Black; Mrs. Wil-

iam Layne and son.

Deaths: Feb. 25 - Mr. and Mrs. Melvin Hardin, son; Feb. 25 - Mr. and Mrs. Rolla Faulkner, daughter.

Deaths: Feb. 25 - Mr. and Mrs. Ollie Cox, daughter; Mr. and Mrs. Stephen Stump, daughter; Feb. 24 - Mr. and Mrs. Worley Smith, son; Mr. and Mrs. Benjamin Alley, son.

Deaths: Feb. 25 - Mr. and Mrs. Richard Osterreider, daughter; Mr. and Mrs. Don K. Worscrist, daughter.

Deaths: Feb. 25 - Mrs. Richard Osterreider, Sandy Hook, Wyo.; De-Hart, Olive Hill; Fred Burns, Morehead; D. C. Burns, Morehead; Lester Keeley, Zanesville; Martha Kealey, Morehead; Mrs. Don K. Worscrist, Morehead; Raymond Little, Morehead.

Deaths: Feb. 19 - Mrs. Earnest Wilson and son, Nina Caudill; Ray Plank, Marie Edington; Levi Gregory.

Deaths: Feb. 21 - Ben R. Dotson; Kimbly Waggoner, Rome Kids; Jeff Frey Wells.

Deaths: Feb. 21 - Mrs. Melvin Hardin and son, Florence Knapp; Mrs. Rolla Faulkner and daughter, Mildred Denton; Myrtle McFrayer; Mary D. Hall; Kenneth Jones.

Deaths: Feb. 23 - Evelyn West, Judy Menz; Elizabeth Oatts.

Deaths: Feb. 24 - Oscar Jackson; Geneva Duncan; Chester Ray Craft; Feb. 25 - Pearl Black; Mrs. Wil-

iam Layne and son.

Deaths: Feb. 25 - Mr. and Mrs. Melvin Hardin, son; Feb. 25 - Mr. and Mrs. Rolla Faulkner, daughter.

Deaths: Feb. 25 - Mr. and Mrs. Ollie Cox, daughter; Mr. and Mrs. Stephen Stump, daughter; Feb. 24 - Mr. and Mrs. Worley Smith, son; Mr. and Mrs. Benjamin Alley, son.

Deaths: Feb. 25 - Mr. and Mrs. Richard Osterreider, daughter; Mr. and Mrs. Don K. Worscrist, daughter.

Deaths: Feb. 25 - Mrs. Richard Osterreider, Sandy Hook, Wyo.; De-Hart, Olive Hill; Fred Burns, Morehead; D. C. Burns, Morehead; Lester Keeley, Zanesville; Martha Kealey, Morehead; Mrs. Don K. Worscrist, Morehead; Raymond Little, Morehead.

Deaths: Feb. 19 - Mrs. Earnest Wilson and son, Nina Caudill; Ray Plank, Marie Edington; Levi Gregory.

Deaths: Feb. 21 - Ben R. Dotson; Kimbly Waggoner, Rome Kids; Jeff Frey Wells.

Deaths: Feb. 21 - Mrs. Melvin Hardin and son, Florence Knapp; Mrs. Rolla Faulkner and daughter, Mildred Denton; Myrtle McFrayer; Mary D. Hall; Kenneth Jones.

Deaths: Feb. 23 - Evelyn West, Judy Menz; Elizabeth Oatts.

Deaths: Feb. 24 - Oscar Jackson; Geneva Duncan; Chester Ray Craft; Feb. 25 - Pearl Black; Mrs. Wil-

iam Layne and son.

Deaths: Feb. 25 - Mr. and Mrs. Melvin Hardin, son; Feb. 25 - Mr. and Mrs. Rolla Faulkner, daughter.

Deaths: Feb. 25 - Mr. and Mrs. Ollie Cox, daughter; Mr. and Mrs. Stephen Stump, daughter; Feb. 24 - Mr. and Mrs. Worley Smith, son; Mr. and Mrs. Benjamin Alley, son.

Deaths: Feb. 25 - Mr. and Mrs. Richard Osterreider, daughter; Mr. and Mrs. Don K. Worscrist, daughter.

Deaths: Feb. 25 - Mrs. Richard Osterreider, Sandy Hook, Wyo.; De-Hart, Olive Hill; Fred Burns, Morehead; D. C. Burns, Morehead; Lester Keeley, Zanesville; Martha Kealey, Morehead; Mrs. Don K. Worscrist, Morehead; Raymond Little, Morehead.

Deaths: Feb. 19 - Mrs. Earnest Wilson and son, Nina Caudill; Ray Plank, Marie Edington; Levi Gregory.

Deaths: Feb. 21 - Ben R. Dotson; Kimbly Waggoner, Rome Kids; Jeff Frey Wells.

Deaths: Feb. 21 - Mrs. Melvin Hardin and son, Florence Knapp; Mrs. Rolla Faulkner and daughter, Mildred Denton; Myrtle McFrayer; Mary D. Hall; Kenneth Jones.

CHAKERES TRAIL THE MOST HILARIOUS OF THEM ALL MOREHEAD, KY.

Disney's Newest, Most Hilarious All Cartoon Adventure! FUN AND FANTASY! SONGS AND SORcery! WAIT DISNEY'S The Sword and the Stone

Starting Sunday LAUGH and the World Laughs With You, You'll Roar At

Look who's minding the store! JERRY LEWIS. "Who's Minding the Store?"

Starting Wednesday 2 - SPECTACULARS - 2 ALL NEW SUSPENSE SHOWDOWN! CHILDREN OF THE DAMNED SEVEN VALIANT SONS OF SPARTAN! GLADIATORS

Heddie Kincer Named To Berea Choir. Miss Hedwige Frances Kincer, daughter of Mr. and Mrs. Shads Kincer, Route 2, Morehead, has been selected a member of the 1964 Chapel Choir at Berea College.

Look! Permanent Wave Special Days - Mondays and Tuesdays Only - Regular \$20.00 Wave \$17.50 Regular \$15.00 Wave \$12.50 Regular \$12.50 Wave \$10.00 Regular \$10.00 Wave \$ 7.50

Stucky Beauty Shop MOREHEAD, KY. PHONE 784-4885 - OPERATORS - Betty Stucky Hillie Day Garnetta Fanning Nancy Jessee - Karan Mauk

Robin Hood. Why we won't compete with discount stores!

Drastic price cuts would prohibit us from giving you the quality products and services you want and have come to expect from our shoe department. For instance:

1. REPUTABLE BRAND NAMES. We would not be able to offer you the quality materials, workmanship, and long wear that you get with our carefully selected, established brand names. 2. SKILLED FITTING. You would not have the benefit of the years of experience and knowledge of our skilled, professional shoe fitters. 3. COMPLETE SIZE RANGES. There is no such thing as an "average" foot, but a price cut would demand that we stock just a limited number of the so-called "popular" or "average" sizes. 4. NEWEST STYLES. A style selection means a bigger investment, so we couldn't offer you much of a style choice in men's, women's, or children's shoes.

60 Students From College Practice Teaching Locally

Thirty Morehead State College teachers and their student teachers in schools in Rowan County this semester.

Thirty-seven are at Berea-Kingside Training School, 19 at Rowan County High School, two at Elizabethton and two at Glasgow.

Dr. Morris Norfleet, Associate Professor of Education, is Director of Student Teaching.

A large percentage of the total number of student teachers are receiving training in the 20 off-campus centers this year, said Mr. Norfleet.

"We have completely outgrown the facilities at Berea-Kingside Training School," he added, "and have developed a fine cooperative program with local school systems throughout the region."

Teachers and their supervising teachers in that order are:

Berea-Kingside: Mary Arnett, Cleofield; Thelma Evans, elementary; Sam Denney, English; Stephen Blatt, Huntington, West Virginia; Sandra Manburg, speech; Ruth Couch, Olive Hill; Blanche Walz, elementary; Hazel Davis, Morehead; Sam Denney, English; Martha Davis, Paintsville; Virginia Rice, home economics; Robert Detrick, Springfield, Ohio; Larry Dale, art; John Bibb, Newport, Dale, art; Stollers, Robert; Ellis, Georgetown, Ohio; Hazel Naljan, biology; Rodney Hall, Galax, Virginia; Glenn Falderick, maternal mental; George Hazelwood, Lebanon, Ohio; George Young, 20-

Schools participating student science; Boby Higgins, Morehead; Barbara, special science; Terri Hughes, Tullahoma; Thelma Evans, elementary; Cora James, Berea-Kingside; elementary; Lardene Kohls, Alexandria; Ann Ward, physical education; Jack Laveson, Paintsville; Larry Dales, art; David Layne, Middletown, Ohio; Ronald Hart, industrial art; Janet Lewis, Stearnsfield, Hazel Nollan, biology; Virginia Lushbough, Volga, Ohio; Hal, vocal music; Patricia Murray, Wayland, Nara Ward, physical education; Ronnie Wilson, McKeesport, Pennsylvania; James Weaver, instrumental music; John Oaks, Jeffersonville; Charles Jones, mathematics; Noel Gray, Sanders; Sandra Manburg, drama; Easter Patrick, elementary; Willie Foster, elementary; Vivian Palky, Yatesville; George Young, social science; Ava Poston, Morehead; Era Mae Snelley, elementary; Patricia Tackett, Dorjari; Mary Anderson, elementary; Vivian Palky, Yatesville; Era Mae Snelley, elementary; Anna Taylor, Russellville, Ohio; Blanche Walz, elementary; Robert Sexton, Wingo, Mabel Harbour, English; Sandra Scott, Garrison, Mary Anderson, elementary; Robert Stamper, Casey, Bernard Hamilton, French; Linda Jackson, Covington; John James, Peaslee, instrumental music; James Verge, Garrison, Charles Jones, mathematics; Peter Verbeke, St. Louis, Ga.; Gables, Florida; Paul Wartner, physical education; Larry Wilson, Packersburg, West Virginia; Paul Wartner, physical education; Rita Wilson, Louisa, Bernice Jackson, Morehead; and Rebecca Weaver, Pulaski, Virginia, William Svec, instrumental music.



Walt Disney's newest "Snow in the Snow" starts tonight at the Trill Theatre.

REVIVAL

Cranston First Church of God

Starts Monday March 2 At 7 P.M.

Rev. Clifford Hutchinson

The Rev. Clifford Hutchinson, your hometown boy, pastor of the Grand Avenue Church of God in Middletown, O., will be at the First Church of God at Cranston in a revival campaign starting Monday, Mar. 2, at 7 p.m. and continuing to ? ? ?

Let's fill the house and make this an old-time, heart-warming, soul-stirring revival.

The pastor, Rev. John C. Thornbury and the congregation extends a great big welcome to you to attend.

Cad Thurman Named Demo Fund Raiser

C. P. Thurman of Louisville said Saturday he has been appointed chairman of a fund-raising "hot nanny" dinner, Apr. 18 at Louisville to help pay Democratic campaign debts.

The Democratic organization is not allowed to absorb debts of a factional election such as the primary last spring. But it has put off in Jefferson-Jackson dinner to a later time so it is not to conflict with the other fund-raising event.

Gov. Edward T. Breathitt appeared with Thurman at a news conference. He is serving on the fund-raising committee and will participate actively in other ways.

Thurman was State Insurance Commissioner under Chandler.

The dinner, "price probably will be \$25, Thurman said, and a nationally prominent speaker is being sought.

Month Remains For Farmers To Get Tax Rebate

State Revenue Commissioner J. E. Luckett has reminded farmers that all claims for refund of tax in 1962 must be filed with the Revenue Department by Mar. 30.

Farmers possessing refund permits are refunded 90 percent of the tax paid on gasoline used in unlicensed tractors strictly for agricultural purposes. Refund permits may be obtained by application during the month of March.

Department of Revenue, Frankfort.

Refunds must be filed at least 15 days prior to the purchase of gasoline on which a refund is to be claimed.

Refunds may be requested any time during the calendar year in which purchases were made, and within 90 days following the close of the calendar year in which purchases were made, Luckett explained.

Rowan Real Estate Transfers

(Feb. 19 - Feb. 25)

Lloyd Buckner and Lola Buckner, Clearfield, to Forest Ray Buckner and Patricia Buckner, Clearfield; land on Morgan Fork, Feb. 19.

Boone Hollan Jr. and Jean Hollan, Morehead, to William Russell Mahaney and Nell Fair Mahaney, Morehead; land on Oakley Branch, Feb. 19.

Forest Heights Subdivision Inc., Morehead, to Donald L. Martin and Vesta Rose Martin, Morehead; Lots Nos. 2 and 4 in Forest Heights subdivision, Feb. 19.

Melvin Stone and Ellen Stone, Rowan County, to General Refractories Company, a Pennsylvania corporation; land on Laurel Creek, Feb. 20.

Asa Johnson, Pauline Johnson, Willie Johnson and Ruth Johnson to O. C. McKee and Sadie McKee, Plummers Landing; land on Egli Fork, Feb. 20.

Lloyd Roberts and Esta Roberts to Edith R. Thomas and David H. Thomas, all of Morehead; land on Licking River, Feb. 21.

Maxine Pumphel, Gerald G. Pumphel, Ralph Early, Elsie Early, Edward N. Early, Anna M. Early, Don Early and Mary Early; Lots Nos. 106, 110 and 119 in the Rogers and Early subdivision, Feb. 21.

George Sloan and Wanda Sloan, Morehead, to Elmer Plank and Vera Plank, Morehead; land on Holly Fork and North Fork, Feb. 21.

Sherman Murphy and Beulah Murphy, Morehead, to Calvin Lytle and Anna Lee Lytle, Morehead; land on U.S. 60, Feb. 21.

Christine Jennings and Ed Jennings, Clearfield, to Paul Rogers and Pearl Carpenter, Farmers; land on Dry Creek, Feb. 21.

H. T. Hogge to Leland Hogge and Margaret Hogge; land on Ky. 377, Feb. 24.

Ottis Caldwell, Clela Caldwell, Clyde Caldwell, Emogene Caldwell, Lowell Black, Gene Black and Jack Caldwell, Morehead, to Ida Caldwell, Morehead; land on Licking River, Feb. 24.

L. G. Brown and Audra Brown to Paul Dickey and Grace Dickey; land on the North Fork of Licking River, Feb. 24.

Grace Lewis Dickey and Paul Dickey to L. G. Brown and Audra Brown; land on the North Fork of Licking River, Feb. 24.

Addison Everett Claimed Friday In Maysville

Addison L. Everett, Maysville businessman and former state representative, is dead at 54.

Everett died Friday night at Mayswood Hospital where he had been a patient since last Sunday. He suffered from a heart condition.

Everett served four terms in the legislature and in 1968 was House majority leader.

He operated a grain and feed business founded by his father. He also was a bank director and a former state president of the Grange lodge.

Power Consumption Up By 15 Percent

Moreheadians used 15 percent more electrical power in 1963 than in 1962, and the 1963 increase was figured at 33 percent over 1961's figure.

That was disclosed this week by a perusal of Kentucky Utilities' annual payment to the City of Morehead for its franchise. The firm rebates three percent of its annual sales to commercial and residential customers to the city under terms of the 20-year franchise.

Payment for 1963 - made to the city on Feb. 15 - was \$6,753.24, compared with \$5,801.90 for 1962 and \$5,153.77 turned over for 1961.

Robert A. Moore, district manager for KU, said the 1962 payment included three percent of the electrical power sold in the newly-annexed Tulliver Addition from the time that section became a part of the city - early in June.

He pointed out that the payment reflected not only an increase in size from annexation, but also shows increased usage of electrical power in sections which have long been a part of the city.

Coin Will Assist Vets In Filing Claims

Are you a veteran with a problem about filing or prosecuting a claim for benefits due from military service?

Roy M. Cain, a representative of the Kentucky Disabled Ex-Servicemen's Board will be in Morehead next Wednesday to aid veterans of this type.

He will be in the Kentucky Employment office.

Combat Badge Awarded Capt. Sanford Boyd

Army Capt. Sanford D. Boyd, 26, whose wife, Gretchen, lives at 2203 St. Andrews Circle, Columbus, Ga., received the Combat Infantryman Badge while assigned to the man badge element of the U. S. Military Assistance Advisory Group (MAAG) in Vietnam, in late January.

Capt. Boyd received the award for having been under fire while serving as an advisor with a Vietnamese ground combat unit.

Methodists Transfer Meeting To Morehead

The Kentucky Annual Conference of the Methodist Church will be held in Morehead, rather than in Richmond, next June.

Bishop Walter Gumm announced Tuesday that because of a conflict in dates, the conference will be held on the Morehead State College campus, rather than at Eastern State College.

Date for the meeting are June 25.

March Best For Lawn Fertilizing

Mid-March is the best time to fertilize home lawns, says T. E. Pope, University of Kentucky Agricultural Extension Service horticulturist.

"He recommends either a 10-10-10 analysis fertilizer or a 10-6-4 analysis. Distribute 15 to 20 pounds of either of these evenly over each 1,000 square feet of lawn area."

Another fertilization in the same amount will be needed later this year, Pope says. This should be applied about August 1.

A midsummer application of nitrogen may be needed, he points out. For this fertilization, three pounds of ammonium sulfate material for each 1,000 square feet of lawn area is recommended.

This should be applied when the grass is dry; it will cause burning if dry grass is wet at application time.

The proper level of fertilization is important. Under-fertilization permits a thin, open turf easily invaded by weeds. Over-fertilization makes lawns become soft, succulent and rapidly susceptible to disease and insect attacks. Grass should be kept in a healthy, vigorous growing state throughout the season.

Some lawns need liming. A soil test will determine this. Information is available from county agents on this procedure.

YOU USE THIS ONE

BLUE CROSS-BLUE SHIELD

3101 Bardstown Road, Louisville 5, Kentucky

MO-5

Please mail to me without obligation, information and an application for Blue Cross-Blue Shield.

NAME _____

ADDRESS _____

CITY _____ STATE _____

FARM BUREAU MEMBERS - SEE YOUR FARM BUREAU AGENT

GIVE THIS ONE TO A RELATIVE OR FRIEND

BLUE CROSS-BLUE SHIELD

3101 Bardstown Road, Louisville 5, Kentucky

MO-5

Please mail to me without obligation, information and an application for Blue Cross-Blue Shield.

NAME _____

ADDRESS _____

CITY _____ STATE _____

FARM BUREAU MEMBERS - SEE YOUR FARM BUREAU AGENT

HOOVER WASHER - SPIN DRYER

The Fastest Washing, Most Compact Washer-Dryer Made!

Uses Less Than 4 Square Feet of Floor Space.

All This For Only **\$159.95**

- Exclusive Features —
- * Completely guaranteed for 1 year by Hoover.
 - * Stainless steel tub and enodized aluminum spin basket.
 - * Speed - 29 lbs. in 30 minutes.
 - * Water - only 10 gallons.
 - * No special fittings.
 - * Compact - fits just about anywhere.
 - * Portable - easy to roll.



A NEW HOOVER

Big 1 1/2 H.P. Motor Now Only **\$35.95**

Now Has Wheels On It Complete With Attachments

FRALEY ELECTRIC CO.

112 Fairbanks Ave. Phone 734-4250 Morehead, Ky.

"BALANCE" is the secret

Build YOUR BANK BALANCE by making regular deposits in your SAVINGS ACCOUNT THE CITIZENS BANK

OPEN A SAVINGS ACCOUNT TODAY "Grow With Us"

Member Federal Deposit Insurance Corp. - Use Our Night Depository

● Checking Accounts ● Savings Accounts ● Loans

INTEREST FOR YOU

INTEREST IN YOU

Quick Comeback Is Seen For Cigarettes After Federal Report But Demand For Pipes, Cigars, Other Leaf Products Runs High

Mixed among hundreds of baskets of unfiltered tobacco pipes in a Brooklyn store are several dozen filled with bright red, yellow and green parts.

When completed these colored pipes will sport rhinestones embedded in polished, carved bowls. The pipes are only five inches long, designed to attract women.

A newspaper advertisement urges readers to try a "safety cigarette that looks like a cigarette, feels like a cigarette and you never light up." The manufacturer of this clove-scented imitation of a cigarette guarantees

money back if it doesn't reduce withdrawal symptoms when you give up the real item.

In a Paterson, N.J. drugstore a customer receives an smoking literature and a short lecture when he buys cigarettes. "I don't just tell them you shouldn't smoke but we try to explain why," says the chief pharmacist.

Colored pipes for women, intensified anti-smoking campaigns and a flood of cigarette substitutes are among the many signs of what some experts consider the most critical period for the seven-billion-dollar U.S. tobacco industry since John Rolfe planted his first tobacco crop 350 years ago.

Last month a scientific panel of the United States branded cigarette smoking a hazard to health, a contributing factor to other diseases. Remedial action was urged.

But sales are steadily dropping. Some guesses on the size of the drop ran to 30 percent.

Pressure of retailers, distributors and the prevailing indications sales remain below the levels before the report was released, but upturn in at least 12 of 17 major cities surveyed. These 12 included Kansas City, Pittsburgh, San Francisco, Cleveland, New Orleans and Denver.

"I think there will be a quick return to almost normalcy," said Morris Shlensky, president of Katz Drug Co., a large Midwestern chain. "Most customers see the report as a lark. It has been fashionable to say, 'I have given up cigarettes.'" Many in the industry agree.

Among the nation's major cigarette manufacturers only one has given any direct indication of recent sales. R. J. Reynolds Tobacco Co., the No. 1 cigarette maker, wholesaler, orders being placed by a drop nationally in retail sales of our products which is more than normal at this time of year."

The attitude of the major companies was summed up by the representative of one: "There was no new material in the report; it was the same old thing. There is no sense quarreling publicly about it; everyone will forget most of it in time. We know more than is needed and we're all for that."

Another indicator of sales is cigarette tax receipts. A check of January figures for 10 states showed 16 declines from January 1963. However, in more than 20 cases where state officials commented, they said the "smoking and health" report could not clearly be blamed.

In four cases—New York, Rhode Island, New Hampshire, and Ohio—state officials believed the report was definitely responsible. The picture included purchases of stamps a month or two in advance for bulk purchase of stamps based on orders available for taxes rather than on cigarettes and orders. Several state officials said it was too early to determine the true effect of the report.

One fact was clear. The demand for cigars, pipes and smoking tobacco was skyrocketed.

"It's like Christmas in February. We've got so many pipe or cigar stores that I don't know what to do," said I. C. Legros, president of Whiskley Taylor Distributing Co. in Wheeling, Va.

"We've gotten rid of some pipes we never could sell before," even the corobos are going fast," said T. M. Ballobo of Patrick McTeer Co., a major Richmond, Va., outlet.

George Wainick, a partner of the Kinkadee firm that resumed making women's pipes after a six year lapse, agreed. "I've never seen a surge of demand like this since I've been in the business since 1924."

"We've got a backlog of three months on orders, possibly more," he added. "They're driving me crazy with these women's pipes. I can't make enough of them."

Major cigar manufacturers confirm the demand.

"Our January sales skyrocketed. February is even better. Let's say we'll all over the country," said E. Archie Mishkin, president of Bayuk Cigar Co., Philadelphia.

"There has been a tremendous number of people just trying cigars and a great surge of interest in small cigars," said Harold Edson, sales promotion manager of General Cigar Co., New York.

But one industry source cautioned: "No one really knows if this will hold or whether everyone is going to buy cigarettes."

Meanwhile, the companies that made most of the six billion cigarettes pushed by an estimated 70 million U.S. smokers last year are sitting back and, as one tobacco man put it, "waiting to be told what they will be allowed to do and that they won't be permitted to do."

Part of the answer may come after a Mar. 16 Federal Trade Commission hearing on rules that would drastically restrict cigarette advertising. The FTC proposals would require each cigarette package and advertisement to carry prominently a warning that cigarette smoking is hazardous to health and may cause cancer and other diseases.

Cigarette company advertising is estimated at \$150 to \$200 million a year.

Two major companies have made advertising changes since the hearing report. That main- tain they have not cut advertising outlays or altered basic policy.

A spokesman said Reynolds has "repositioned, not cut back" expenses for spot radio commercials to avoid children's listening hours. The money will be shifted to reach adult radio audiences, he said.

At part of a continuing program American Tobacco Co. dropped

sponsorship of sports events on television and radio. "We are leaning over backwards" show we believe smoking is for adults understood," says one who is not misallied. Robert Heisman, vice president.

He added that last year advertising expenditures reached a record high, and this year they will be increased by the introduction of a new brand.

Since the report, the National Geographic, Saturday Review, Parents and Sunset magazines have dropped cigarette advertising. On the other side a national side group of 38 local and regional monthly magazines solicited more cigarette advertising after finding readers "expressed a strong desire to evaluate advertising for themselves."

Another development has been a reduction of the work week for an undetermined number of the industry's nearly 100,000 factory workers. Three or four day work weeks were ordered for some plants by each of the major makers.

All the companies emphasized that the work schedules normally develop each year after Christmas. They said some reduction in the work schedules was being adopted by the industry.

American and Lorillard admitted some of the softness in sales may have been due to the report ought to be back to full production by March.

The major companies have contributed to a \$10-million grant to the American Medical Association's long range study on the relationship between smoking and disease.

to report the desire to smoke reduced an extended sales boom.

Experts on the tobacco industry generally don't feel these substitutes will have much of an overall effect on cigarette sales.

"I feel there will be a drop in (cigarette) consumption of 5 to 15 percent over the first half of the year, from a year ago," said one of the experts, Oren Knauer of Standard & Poor's Corp., an advisory service. "The decline should gradually diminish and turn into an increase over a year from the second half," he added.

He feels cigarette company stocks are selling "quite low and should not go much lower." They

War Being Waged Against Illiteracy Among Rejectees

A new nationwide program to give counseling, testing and training to men who fail to pass the educational tests for military service was launched in Kentucky in February.

State Economic Security Commissioner Earl V. Powell said armed forces rejectees will be referred to the 29 local employment service offices by a letter from the State Selective Service Board.

There they will receive extensive counseling to help find and hold the right job, and will be tested for their abilities, he said.

Col. Everett Stephenson, director of the State Selective Service Board, said nearly one-third of draftees who report to the local boards in Kentucky are rejected because they fail to meet the minimum educational standards.

Kentucky ranks close to the bottom nationally in the number who fail the eighth-grade-level standard Armed Forces intelligence test, he added.

The new program, financed entirely by Federal funds, will send an estimated 600 rejectees a month to the local employment service offices, Deshaizer said. At least one person in each office will be named to handle only these cases.

The program will initially include those men who have been rejected by their local Selective Service Board since January 1964. Earlier rejectees will be included later.

H. H. Lacy—

(Continued from page 1.)
couragement of new and improved farm practices; support youth leadership activities; cooperate with farm leaders and agencies in such activities as educational tours, field days and achievement meetings; and, in general, represent banking in the agricultural field wherever needed.

"We assure the farm people of Kentucky that the banks of Kentucky are vitally interested in agriculture and that it is the desire of the Association to assist in programs designed to improve the income of farm people whenever and wherever the opportunity affords itself," said President Sweeney in announcing the appointment of Lacy as chairman. The Kentucky Bankers Association is recognized as one of the outstanding groups of its type in agricultural work in the country and has received many national awards in the field.

Beck Takes—

(Continued from page 1.)
denied. They outpoint Beck 12-6 in the latter stages of the contest.

Corbett tallied 22 points and Mann 18.

After 7-7 tie at the end of the first quarter, Morgan County broke into an 11 point budge at halftime and stretched their margin to the final 19 points in the fourth period.

Tommy Calvert scored his season's high of 16 to lead the Eagles.

Marriage Licenses

Ronnie Creech, 20, Morehead, and Judy Ann Norris, 17, Morehead, Feb. 18, Morehead; Feb. 22, Robert E. Moore, 19, Morehead, and Carol Ann Wells, 18, Morehead, Feb. 20, James Ardith Felty, 32, Gray-

son, and Bonnie Jean Bentley, 18, Morehead; Feb. 21, Elvis Clayton Tackett, 24, Morehead, and Betty Lee Cooley, 19, Morehead; Feb. 22, Richard Hitchcock, 18, Allagan, Mich., and Lillian Healdessa Christman, 16, Morehead; Feb. 24,



King And Queen Of The Ball

CHAPTER SWEETHEARTS — Crowned "sweethearts" of the Rowan County High School FFA and FHA chapters last week were Darlene Fraley and Joe Plank. The ceremony took place at a Valentine's Day box supper held jointly by the two groups. Crowning Plank is Sharon Williams, while Miss Fraley received her crown from Robert Lewis.

Name Your Day and BOWL

Open Play Bowling Schedule

Sunday	All Day and Night	All Lanes Open
Monday	12 Noon to 6:30 P.M. 6:30 To Closing	3 Lanes Open 6 Lanes Open
Tuesday	12 Noon to 7:30 P.M. 7:30 to 9:30 9:30 to Closing	All Lanes Open 2 Lanes Open All Lanes Open
Wednesday	12 Noon to 4:30 4:30 to 7:30 10 P.M. to Closing	3 Lanes Open All Lanes Open All Lanes Open
Thursday	12 Noon to 6:30 9 P.M. to Closing	All Lanes Open All Lanes Open
Friday	9 A.M. to Noon 10:30 to Closing	8 Lanes Open 3 Lanes Open All Lanes Open
Saturday	12 Noon to Closing	All Lanes Open

MOREHEAD LANES
Located Behind Jerry's Drive-In

Charter Review Unit Naming Committees

This is the committee-naming period in deliberations of the Kentucky Constitution Revision Assembly which was organized last week with former Governor Earle C. Clements as chairman.

Members are telling the chairman in writing and in order of preference the committees on which they would like to serve. Each of the five committees will be empowered to name its own sub-committees.

The committees to which the 50 delegates to the assembly will be assigned are: State government, local government, bill of rights and elections, revision processes, and education, health and welfare.

A sixth committee will be known as the rules committee. Its function will be to co-ordinate the work of the five other committees, achieve uniformity in literary style and cope with matters that might arise unexpectedly.

The next meeting of the full assembly will be at the call of Chairman Clements, who said he could not state with certainty when this would be.

One reason, he said, is the undetermined time that will be required for the delegates to transmit their preferences of committee assignments and the other is the time the Legislative Research Commission will need to assemble into compact and readable form the voluminous reports and analyses that have accumulated on constitutional reform.

ASHLAND RECOVERY

We have 107 cars and trucks that are not being used. Check our lot and storage building. Most cars are inside where you can shop in comfort. All cars have been detailed from bumper to bumper and are A-1.

No Money Needed!
Finance the entire price, plus tags, tax, and insurance on 36 months if you desire. Other cars arriving daily. If the car you want is not listed here, call us at 324-7168 or 324-7160. Here is a partial listing...

61 CORVAIR 4 Door	\$1969
61 CORVAIR Sta. Wagon	\$1392
62 VOLKSWAGEN	\$1543
62 VOLKSWAGEN	\$1192
60 FORD Fairlane	\$1046
62 CHEVY II 4 Door	\$1466
62 CORVAIR Coupe	\$1391
60 CORVAIR Coupe	\$1319
61 FORD Fairlane	\$1046
61 FORD Fairlane 4 Dr.	\$1248
57 PONTIAC 4 Dr. HT	\$696
59 CHEVY Bel-Air 2 Dr.	\$687
57 OLDS Sta. Wagon	\$687
59 CHEVY Impala Conv.	\$1144
60 CHEVY 2 Door	\$976
60 BUICK LeSabre 4 Dr.	\$1486
60 OLDS '78" 4 Dr.	\$1524
59 CADILLAC HT	\$1969
61 CADILLAC 4 Dr.	\$2985
59 PONTIAC 2 Dr.	\$1286
59 MERCURY 2 Dr.	\$888
57 FORD 4 Dr. Wagon	\$786
57 CHEVY 4 Door	\$743
56 OLDS 2 Dr. HT	\$386
57 CHEVY Pickup	\$794
57 FORD Pickup	\$713
57 STUDE. President	\$444
57 FORD 4 Dr. HT	\$576
60 FALCON Wagon	\$1043
60 OLDS 4 Door	\$786
58 CHEVY V8 2 Dr.	\$993
59 CHEVY Wagon	\$1043
56 CHEVY 4 Door	\$487
57 FORD Wagon	\$366
57 OLDS Hardtop	\$467
57 PLYMOUTH 4 Door	\$467
57 MERCURY 4 Door	\$663
59 CHEVY Convertible	\$881
57 FORD Wagon	\$786
57 CHEVY Bel-Air 2 Dr.	\$786
54 FORD 4 Door	\$176
59 PONTIAC Hardtop	\$1183
57 CHEVY 4 Door	\$716
59 CHEVY 4 Door	\$997
56 FORD 2 Dr. HT	\$583
57 PONTIAC 4 Door	\$568
62 VOLKSWAGEN	\$1491
60 VALLIANT 4 Door	\$1126
57 OLDS '78" 2 Dr.	\$469

These Cars and Others May Be Seen Daily 8:00 A.M. Until 9:00 P.M. 10th & WINCHESTER AVE. OLD BOWLTORIUM BLDG.

Buy Now For

Rayon and Silk JACKET DRESS

DRESS TOP MADE OF FORTREL POLYESTER

Sizes 12 to 16

\$24.98

Sizes 14 to 18

\$29.98

Our store is just filled with everything fashionable for spring. You may expect to attract admiring attention when you choose your Easter outfit and accessories from our collection, featuring the latest styles and colors. Choose early while our stock is complete.

3-Pc. Rayon & Acetate

SUIT

GRAY - BLACK - BIEGE

Sizes 12 to 16

\$24.98

All Wool - Stevens Fabric

SUIT

- FULLY LINED JACKET
- SEAT LINED SKIRT
- NAVY - WHITE - TURQUOISE

\$14.98

ACCENT YOUR COSTUME WITH OUR

JEWELRY

Assorted Color Pearls or Gold

EARRINGS - PINS NECKLACES BRACELETS

\$100. \$150. \$200

ASK TO SEE OUR NELLY DON

FLORAL PRINT DRESSES

WASHABLE - Made of Dacron Polyester. Shirtwaist - 3 1/2" Sleeves. Sizes 12-16

\$18.98

We have just received a shipment of dacron polyester and cotton blouses, skirts and Bermuda shorts by Bradley. We have sizes 5 & 6 to 17, light green or blue. Mix or match wrap around, straight, Bermuda shorts are \$4.98.

We also have a new lot of Bradley Rayon & Dacron Shifts, sizes 6 to 14, \$7.98.

Martin's Dept. Store

Main Street Morehead, Ky.

The Morehead News

Morehead, Kentucky, Thursday Morning, February 27, 1964

including St. Claire

Hospitals And Health Facilities In State Cost \$6,382,000 In '63

New public hospital and medical facilities costing a total of \$6,382,000 were opened in Kentucky last year, Dr. Russell E. Teague, commissioner of the State Department of Health, has reported.

These public and/or non-profit projects included three hospitals, \$2,122,521; additions to four others, \$7,087,025; a diagnostic and treatment center, \$66,145; and 11 county health centers, \$806,201.

Kentucky's 1963 medical-facility expansion of more than \$6 million was helped by matching funds from the Hill-Burton Federal program, according to Paul A. Hackney, director of hospital and medical facilities in the State Health Department. All Federal-aid medical projects in Kentucky are under his direction.

Since Hill-Burton construction started in this state in 1948, a total of 181 projects costing \$200,105,126 have been completed, Hackney added. Of this aggregate, \$74,631,798 has gone into 94 hospitals and additions to hospitals.

Through the last fiscal year end-

ing June 30, 1963, a total of 34 other projects totaling \$40,907,796 were under construction or on the drawing board. These made a total of \$330,012,918 in Hill-Burton funds planned for Kentucky.

Of this \$330,012,918, the Federal share was \$61,896,343, the State share \$1,937,785, and the remainder from local funds.

When the Hill-Burton program started, only one-third was paid by the Federal Government. In addition to the building program last year, eight new nursing homes were licensed, Hackney said. This brought the bed total in 89 of these homes now to 3,638, an increase of 430 beds.

The new hospitals completed last year, their bed total, and cost: St. Claire (41), Morehead, \$807,950; Fort Logan (25), Stanford, \$907,098; and Jane Todd Crawford Memorial (30), Greensburg, \$537,472.

A diagnostic and treatment center at Morehead's St. Claire cost \$66,145.

Additions to hospitals finished in 1963, the beds added and total now, location, and cost: 500 Lake of Campbell County (95-207), Fort Thomas, \$1,629,624; Bowling Green-Warren County (66-175), \$1,400,000; Muhlenberg Community (114-84), Greenville, \$323,407; and Owen County (26-52), Owen, \$222,884.

Health centers opened last year, their location, and cost: Harlan County, Elizabethtown, \$135,701; Paris-Bourbon County, Paris, \$100,000; Bowling Green-Warren County, \$85,851; Leslie County, Hyden, \$75,829; Martin

RCHS Drops Three, Wins One Game

Rowan County High School's in-out Vikings offered poor positive of their erratic tendencies last week, scoring more than 100 points in triumphing Sandy Hook and then dropping a 72-97 contest to Olive Hill.

Scoring 51 points in each half, Coach Warren Cooper's five thumped the Elliott County team 102-46 with George Bowman scoring 27 points and Ben Hicks contributing 19.

Olive Hill hit 34 of 54 free throws and edged past the RCHS five at Olive Hill. Thirty-two fouls were assessed against the local five.

Rowan County earlier had lost 102-60 to the Vikings, but did the Comets, but the difference came at the foul line where Rowan County hit on 15 of 24.

Bobby Brown led Rowan County scorers with 17 points.

Rowan County earlier had lost to Fleming County, 66-63 and to Nicholas County, 64-59.

The Vikings close their season Saturday in a home contest against Menifee County.

County, Inez, \$65,851; Crittenden County, Marion, \$64,000; Caldwell County, Princeton, \$63,000; Lyon County, Edwsville, \$66,000; Madison County, Salyersville, \$55,352; Henry County, New Castle, \$33,457; and Metcalfe County, Edmon-ton, \$53,300.

Hackney said that the eight new nursing homes licensed last year include two in Louisville and one each in Fulton, Greenville, Highland Heights, Madisonville, Owensboro, and Scottsville.

Three nursing homes converted to homes for the aged in 1963 are at Eminence, Somerset, and Lexington.

In addition to the \$76,431,798 spent for hospitals completed in Kentucky since 1948, other medical facilities completed and put into use through Hill-Burton, State, and local funds include:

Public health centers (74), \$4,897,887; schools, \$1,000,000; \$3,527,179; nursing homes (4), \$3,119,568; diagnostic and treatment centers (2), \$65,012; and the State Health Department laboratory, \$482,807.

HONOR GRAD — A3C Larry Sidon of Morehead was an honor graduate of the Air Force's Intercept Operator School at Keesler AFB, Miss., recently. Home on leave with his parents, Mr. and Mrs. Winford Sidon, the airman will return to Keesler AFB for 10 additional weeks of technical training as a Morse intercept operator.

Loans Help Soil Units Aid Farmers

Loans from a special State fund, set up to help local soil conservation districts throughout Kentucky acquire specialized heavy equipment, topped the \$5 million mark in 1963.

Conservation Commissioner J. O. Matlick said the equipment revolving fund, administered by his Division of Soil and Water Resources, has made it possible for soil conservation districts to purchase nearly 600 pieces of heavy equipment since 1948 to carry out soil conservation work.

The fund was set up that year with an appropriation of \$400,000 and was increased in 1960 by an appropriation of \$300,000.

In 1963 alone, Matlick said, nearly \$650,000 was loaned from the fund to make purchases of heavy equipment and machinery.

The loans provide up to two-thirds of the purchase price of equipment. The remainder is furnished as a down-payment by private contractors who sublease the equipment from the local soil conservation districts.

The districts contract with the Division of Soil and Water Resources for the loans, Matlick explained. When the loan has been approved by the contractor, based on the amount of work done, the division transfers the equipment title to the contractor.

The two percent interest, charged by the division on a declining balance basis, goes into the revolving fund to make more loans possible.

Matlick said the loan fund has allowed contractors to acquire many more pieces of heavy equipment than they could have purchased alone. In addition, he pointed out, the benefits to Kentucky farmers and landowners of the 121 soil conservation districts have been immeasurable.

"Since the contractors do not have to pay high interest rates and because the rate of payment on the loans is based on the amount of work done, the contractors can pass on their savings to farmers for whom they do the work," Matlick explained.

The equipment revolving fund, operating only on the \$600,000 from the two appropriations, has provided for the purchase of \$7,703,000 worth of equipment during the past 15 years. The individual loans totaled \$5,174,113 by the end of December 1963, with the difference reflected in the amount paid down by the contractor.

Matlick pointed out that since 1948, when the program began, equipment costs have more than doubled for most items being purchased by the soil conservation districts.

Sales tax paid on the items purchased since mid-1960, when the tax went into effect, has amounted to \$1,500,000, Matlick said.

The equipment has included such items as crawler tractors (the largest single item, with 375 purchased), heavy draglines, heavy equipment trailers, scrapers, tire tractors, and disk harrows.

Since 1948 equipment purchased with loans from the fund has helped build nearly 1,100 miles of farm roads, more than 1,100,000 feet of terraces and 4,200,000 feet of open ditch drainage, Matlick said.

With the equipment, more than 12,600 farm ponds or lakes have been dug and nearly 7,000 have been extended. Close to a million feet of stream channel has been improved, land clearing and reclamation has been carried out on more than 132,000 acres, and landscaping and grading have been done on nearly 22,000 acres.

It's Not Too Early To Plan For This Summer's Garden

By Adrian Raper
County Agent

Since a lot of us are going to start thinking about gardens in the next few weeks, it might be well to mention a few things that might help get more out of our garden and to make it a little easier. First, most people plant their garden as a result, in many cases we are unable to take the necessary care of it. Allow about 1 1/2 of an acre or 2000 square feet per person if you have the space. Although it is a little trouble, I think it will pay to draw a plan of your garden to square, locate the rows of vegetables, and label them showing the dates you are going to plant them. Then make a list of vegetable seeds and the transplants you need. Locally grown plants are much better than shipped in plants, therefore, if you know how many you need let your local producer know, he can have them for you.

Next group your crops together such as lettuce, turnips, etc. together and also put the tall-growing ones together such as corn, tomatoes, and so forth. Some vegetables belong to the same family, an example being broccoli, cabbage, and cauliflower. Do not plant these vegetables of the same family in the same place for any two years. Some diseases may affect just one particular family and by rotating them you help eliminate this disease trouble.

Keep the weeds out of your garden. They rob plants of moisture, fertility, and in many cases sunlight. Jimmy Drennon, who lives on the Flemingsburg Road, told me the other day that he had found the easiest way to raise a garden was to use a mulch. I believe he says that he uses straw, but you can use sawdust, plaster, or almost any similar material. They not only will keep weeds down, but they conserve moisture also. Now is a good time to haul mulching material and have it ready.

The garden can also be an attractive part of your landscaping plan if you will plant some flowers around it or in it. Any of you who have been around Leland Hall's, E. B. Shast's, or Sam Linton's places will notice that they plant flowers and enjoy them throughout the season. It makes a good place to go to a bouquet whenever you are going to

have company or just to admire while you are home. Some of these plants could already be started. As a matter of fact I heard Mrs. Earl Young say that she already had plants up. We have a lot of garden bulletins and pamphlets that you are welcome to if you will stop by and pick them up. This includes vegetables needed for various size families, planting dates, varieties, and so forth.

And by the way, why not enter the Garden Contest this year?

Beef Cattle Show
The first series of meetings on Beef Cattle Care and Management will be held Friday at 7 p.m. in the REA Building at Grayson. All beef cattle producers are invited to take part in these meetings. If you would like to go, call me or gather at the rear of the courthouse at 6 p.m.

Tobacco
One of our seedsmen sent me a few packages of hybrid tobacco seed this week to put out for test plots. I still have a few left if any of you would like one of them. First come, first served!

Bull Sale
The Livestock Improvement Association of Bracken, Fleming, Mason and Rowan Counties is sponsoring a registered bull sale at Farmers' Stockyards, Flemingsburg, Sat., Mar. 7th.

If any of you have a bull that is between 12 months and 2 years old, this will be a good place to sell him. On the other hand, if you want to buy a good service bull this will be a good place to be registered. TB and Brucellosis tested and ready to go.

If you have any question write Charles Cannon, John Ford, or Dye Spencer at Flemingsburg.

Tobacco Meetings
The tobacco meeting which was postponed from Tuesday, Feb. 11 due to bad weather will be held Friday, Mar. 6 in the courtroom at 1 p.m. George Corder and Ira Masie will discuss fertilizing and production. Keep this in mind. You can't afford to miss this one.

QUANTANAMO AND WATER
It has been announced, by the Navy department, that a giant conversion plant will be installed that will end Castro's harassment of the base by cutting off the water supply.

NOTICE

TO ALL REPUBLICAN VOTERS

In accordance with party law there will be held on March 7, 1964 at 2 P.M. at the Court House in Morehead the Republican County Convention for the purpose of electing precinct committeemen and committeewomen for the next four years.

(Signed)
CLYDE T. BRUCE
County Chairman
J. A. SHACKLEFORD
Secretary, County Committee

HERE YOU'LL FIND CHECKING ACCOUNTS FOR EVERYONE!



Yes sir, there's a Checking Account service here to fit your needs and income! If your income is modest, open a pay-as-you-go Checking Account (no minimum balance required). If your income is a more generous one, you'll want a Regular Checking Account. Both offer the same wonderful conveniences, safeguards, prestige and other advantages.

OPEN YOUR ACCOUNT AT THIS "FULL-SERVICE" BANK TODAY

PEOPLES BANK OF MOREHEAD



MOORE'S DRYWALL

— Ralph Moore —
245 Flemingsburg Road
Phone 784-5155
Morehead

Complete Ambulance Service

Oxygen Equipped
"Equipped To Serve You"

Member of Kentucky Funeral Director's Burial Association

— Authorized To Service —
Burial Insurance Contracts Issued by COMMONWEALTH LIFE INSURANCE CO.

LANE FUNERAL HOME

Phone 784-4134
Morehead, Ky.

NOW... AT YOUR FORD DEALER'S!

WATER'S STREAK HARDTOP SALE!



Super Torque Ford Galaxie 500/FL Fastback Hardtop

Total performance has carried Ford to 9 wins in a row in NASCAR races 500 miles or longer... and now's your chance to buy a total performance Ford, Fairlane or Falcon Hardtop at special savings! Fastbacks included! But better act fast—this sale is for a limited time only!

TRY TOTAL PERFORMANCE FOR A CHANGE... AT YOUR FORD DEALER'S

ROWAN MOTOR SALES.

117 WEST MAIN ST. MOREHEAD, KY.

OVER, AROUND AND THROUGH...

Pall Mall travels pleasure to you!

PALL MALL's natural mildness is so friendly to your taste!

See for yourself! PALL MALL's famous length travels the smoke naturally—over, under and through the finest tobaccos money can buy. Makes it mild but does not filter out that satisfying flavor, so friendly to your taste. Buy PALL MALL Famous Cigarettes. Outstanding—and they are Mild!

—just naturally good!



You can light either end!

WHEREVER PARTICULAR PEOPLE CONGREGATE

Product of The American Tobacco Company—"Tobacco is our middle name" © A T Co

WE HAVE A COMPLETE LINE OF
Infant Wear And Supplies
 • Receiving Blankets • Diapers • Training Pants
 • Pajamas • Topper Sets
 • Regular Diapers \$3.25 Doz. • Prefold Diapers \$3.75 Doz.
 • Everything For the Infant at the Lowest Prices in Town

CRADLE SHOPPE
 (Located in Bays-Turner TV & Radio Repair Shop)
 WEST MAIN STREET MOREHEAD

Six Berry Varieties Recommended

Six varieties of strawberries will produce probably about 90 percent of the 1964 crop, says James K. Mace, University of Kentucky Horticulture Extension Service horticulturist.

For that reason, he says, "a little list of strawberry varieties is not necessary for the Kentucky grower to meet the demand of the consuming public."

Here are the recommended varieties, listed in order of ripening:

✓ **Earlita**—Ripens about five days before the "Bismarck" variety. Good for fresh market but may be limited in usefulness to the processor.

✓ **Dixiland**—Ripens about a week later than Earlita. Good for markets. One weakness is that this variety inherited the "Blightener yellows" — some of this problem may be eliminated by ordering plants for nurseries that have been free of this trouble.

✓ **Pocahontas**—Most popular variety in Kentucky. High producer, does well on all markets. Is a mid-season berry.

✓ **Tennessee Beauty**—Not always acceptable to the professor. Has more resistance to heat spots than other varieties. Best of the late-season varieties. Very popular variety.

✓ **Surecrop**—Ripens along with Pocahontas. High red steels reputation. Good on all markets.

✓ **Superfection** or **stem**: Best of the everbearing varieties. Both sales belong to the same plant. Used only for fresh market. Ripens in late summer and fall. Requires special growing techniques for best results.

Radical Changes In Homemaking Seen Within The Next 20 Years

By 1984, a homemaker will walk through an air curtain and find herself in one big room without any partitions.

The average kitchen will produce a completely coordinated food program daily operated by a computer. Instead of a recipe book, the homemaker will rely on punched-tape, with each tape preparing a complete meal.

It is conceivable that women will exchange "recipe tapes" over the bridge table.

These forecasts of technological change just 20 years away were cited in a report in a trade journal serving the air-conditioning and refrigeration industry recently.

Thirty-eight authorities on refrigeration, air conditioning, science, industry and space technology were queried on what changes Americans could expect in 1984.

Other predictions included the following:

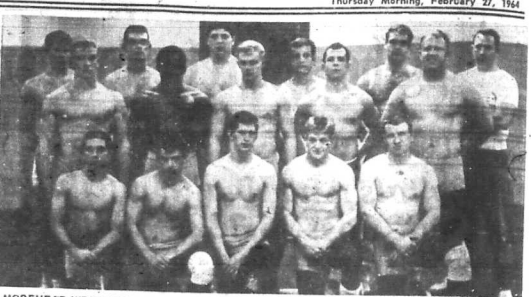
✓ The food shopper will collect her purchases in a motorized cart and pay for them quickly at an electronic checkout counter which reads and records prices then adds up the bill automatically.

✓ Steaks, pizza pies, hamburgers, chickens and hams will be synthetic, either extruded from vegetable fibers or pressed from petroleum products.

✓ More foods will be freeze-dried close to their point of origin — at a peak of ripeness for fruits, close to the aging house for meats, by the sea for fish.

✓ Radiant panels in walls and ceilings will disperse automatically controlled, warm air building occupants. The panels also will become necessary to body heat. They will be inactive until locally activated when one or more persons enter the range of the units.

✓ At least 70 percent of all cars produced will be air conditioned. There will be no waiting for the car to warm up on cold days or cool off on hot ones. Since auto temperature and humidity levels will be maintained at optimum levels.



MOREHEAD WRESTLERS— Pictured above are the members of the 1964 Morehead State College wrestling team. They are: front row, (l to r) Mike Lever, Joe Romero, Joe Dangler, John Roche and Roger Calvin. Second row (l to r): Dick Roche, Allie Loftent, Bob Gunzel, Bob Sreck and Charles Mahoney. Third row, (l to r): Dillen McMullen, Allen Edwards, Dale Couchman, Larry Wireman, Frank McWilliams and Coach John Anderson.

LEAP YEAR SAVINGS
 Extra Day Values
YOUR V STORE

LADIES NYLONS

Popular Sizes 51/15
 1st Quality New Shades While They Last

29¢ FR. OUR LOSS YOUR GAIN

RUBBER TIP BOBBY PINS

REG. 25c PKG.
 3 PKGS. BIG 60 COUNT
 Choice of Blk. or Brn.

29¢ THIS IS VALUE

250 DINNER NAPKINS

Soft Absorbent

29¢ Ea. OUR LOSS YOUR GAIN

Leap Year Savings

BAKING CUPS
 Muffin & Cupcake Size

3 PKGS. 29¢

ASST. COLORS Reg. 15c Pkg.

LADIES HEAD SQUARES

Water Repellent, Rayon Embossed, Asst. Prints

29¢

REG. 49c Feb. 29th Values

VETO CREAM DEODORANT

43c SIZE

29¢ DISCOUNT PRICE

TERRY TOWELS

LARGE 16"x27" SIZE - All Purpose Towels

29¢

THIS IS VALUE

Asst. Prints

RAY-O-VAC BATTERIES

STANDARD SIZE

3 FOR 29¢

REG. 20c EA. OUR COST

HYDRO WICK PLASTIC PLANTERS

COMPLETE WITH DRAIN TRAY

29¢

VALUES TO 49c Asst. Colors

HERSHEY BARS
 YOUR FAVORITE KIND

7 FOR 29¢

Leap Year Values LOW LOW PRICE

Survey Set On All Ky. Counties

State Commissioner of Commerce Katherine Peden announced today that Spindletop Research Center at Lexington will make a 10-month study of opportunities for industrial growth and development in specific areas of Kentucky including all of the state's 120 counties.

"This will be the first time that such an industrial study of such depth has been made in Kentucky on a state-wide basis," Mrs. Peden said. "I feel it will be a great sales tool for the Department of Commerce and will combine human and natural resources with industrial opportunities."

The commissioner said the study of at least 82 of Kentucky's counties will be completed within five months. The cost of the entire 120-county study and copies of the final report will total \$50,000.

The aim of the study will be to match locational requirements of particular manufacturing industries with the ability of specific areas of the state to meet such requirements. Counties will be grouped in sub-areas which will be further sub-divided on the basis of similarity of conditions affecting their ability to attract particular industries.

Three categories of information will be compiled:

✓ Statistical data on economic trends in each sub-area to include changes in types of local economic activities, changes in population, income, labor force and records of recent new industries and expansions.

✓ Evaluation of other economic conditions and facilities in each sub-area including location with respect to raw materials and market access; transportation facilities; present and potential plant sites; public and private facilities; and various other conditions affecting local industrial growth.

✓ Industrial location requirements by the type of industry and other factors such as present location, growth characteristics of the industry, mobility factors and the direction of regional and national industry shifts.

Employment Hits Record 23rd Month

Kentucky marked the 23rd month of record-breaking employment as nonagricultural jobs in December reached 712,200, an all-time high. That is an increase of 6,500 over November, John McCaslin, director of research and statistics, attributed the surge to seasonal employment in wholesale and retail trade plus tobacco stemming and redrying.

The 1963 annual average is 62,900 jobs above the average of a decade ago.

The statistics show that the industry categories with the biggest increases in employment last year were:

Contract construction — up 7,200; wholesale and retail trade — up 7,000; manufacturing — up 3,000; federal, state and local government — up 3,500; and personal, business and professional services — up 1,800.

NEW ONE/46
 McCulloch's VALUE CHAIN SAW

Powerful direct drive cutting with professional engineering features. "Big saw" performance—"Small saw" price!

ADDED POWER • COOL RUNNING • SMOOTH IDLING LOOP SCAVENGING • POSITIVE SAFETY CUT-OFF SWITCH SEE IT ON DISPLAY NOW!

MONARCH SUPPLY STORE
 Morehead Kentucky

WIN A PHILCO APPLIANCE OF YOUR CHOICE

NOTHING TO BUY You need not be present to win— MAIL YOUR ENTRY DO NOT BRING INTO STORE

● REFRIGERATOR ● WASHER ● STEREO ● DRYER ● RANGE ● TELEVISION ● AIR CONDITIONER ● FREEZER

HUNDREDS OF MERCHANDISE CERTIFICATES WILL BE GIVEN AWAY

"COUNT THE BATS and BALLS CONTEST"

PLAY THE GAME—HERE'S HOW IT WORKS—HURRY—DO IT NOW!

- COUNT THE Bats and Balls above
- Mail coupon immediately to "PHILCO CONTEST" (no other accepted) MOREHEAD HOME & AUTO SUPPLY, MOREHEAD, KY.
- FIRST PRIZE WINNER will receive the appliance he or she has selected in registration coupon below; in case of a tie earliest postmark will apply. In case of a "Postmark Tie" a drawing will be held.
- ENTRIES with correct or near correct number will receive merchandise certificates.
- Only one Award made per Family — Employees of Morehead Home & Auto Supply or this newspaper are ineligible.

— Your Local Firestone Dealer —

MOREHEAD HOME & AUTO SUPPLY
 166 MAIN STREET MOREHEAD, KY.

Mail to: Morehead Home & Auto Supply, Morehead, Ky.
 My count of Bats and Balls is _____ of a Philco Contest.
 Name _____
 Address _____
 City _____ State _____
 Phone _____

Refrigerator* Range* Washer*
 Television* Stereo* Dryer*
 Air Conditioner* Freezer*
 *I understand that if I win I will be notified by mail or phone and that I need not be present to win. I further understand that this prize can under no condition whatsoever.

Contest Closes Midnight — March 7

Pierce's 5¢ & 10¢ Store
 MAIN ST. MOREHEAD, KY.



State Fund Aids Conservation Work

THIS BULLDOZER, operated by O. D. Dalton of Pulaski County, is one of more than 600 pieces of heavy specialized equipment purchased through loans from the equipment revolving fund of the State Conservation Department's Division of Soil and Water Resources. More than \$5 million has been loaned from the fund in its 15 years of existence to help farmers and soil conservationists dig ponds, build farm roads and clear land for better conservation of Kentucky's natural resources.

Public Safety Unit Will Seek 'Model' Driving Legislation

The Public Safety Department has drawn up a six-point program which may be introduced in the legislature this week — possibly with administration endorsement.

Among the new traffic safety proposals — and the one most likely to generate controversy — is the "implied consent" provision now in the chemical test laws of 10 other states.

Other proposals include driver license re-examination, reflectorized license, annual vehicle inspection, driver education permits and an interstate equipment safety compact.

The "implied consent" provision assumes that when a driver gets a license he automatically consents in advance to a chemical test if arrested and charged with drunk driving.

Refusal to take such a test from a competent person could lead to suspension or revocation of a license — no matter how the case fares in court.

A driver could obtain a Public Safety Department hearing and also could appeal to circuit court in the home county.

Safety Commissioner Glenn Lovern says the provision also would

protect the motorist by substituting scientific evidence for human opinion. Some larger cities use the system.

Another new approach in the safety program would be re-examination of all drivers every four years.

Only new applicants now are examined. But a recent department regulation forces re-examination of obviously dangerous motorists.

"Giving someone a license to drive for life without re-examination violates the basic fundamentals of traffic safety," Lovern said.

A driver license costs \$2 and is renewed every two years. Under the proposal it could cost \$4 for every four years — and may be something extra to finance re-examinations.

A third new phase is to permit 15½-year-old students to get a permit allowing them six hours of driving instruction behind the wheel.

The motor vehicle equipment safety compact would place Kentucky in an agreement now binding 26 other states. It would allow the state to adopt new safety inventions without the cumbersome

need for legislative approval.

The plan for reflectorized license plates is designed to protect against rear end and parked car collisions. It would cost an estimated \$20,000 to get off the ground.

The Public Safety Department has no authority over the plates, which are made in Kentucky prisons and cost up to 12 cents per tag. Reflectorizing would cost an additional 11 cents.

One obstacle to previous reflectorizing bills was some legislative suspicion that all the business might go to one company.

But Lovern said four American manufacturers produce coating material which could qualify under the proposal.

The vehicle inspection provision basically is a rewrite of the measure which passed the Senate and died in the House during a special session last November.

It would set up an unlimited number of state-appointed, privately-owned garages and service stations to check vehicles for safety every year for a fee as yet unspecified.



"We were happy enough with our cost of electric heating last year. This year it should be even lower!"

—says Mr. and Mrs. L. W. Hicks of Central City, Ky.

"It cost us just \$101 to heat our five room home electrically last year. And now, with the new rate reduction, we figure it should cost us about 10% less, even with the same kind of winter."

"But electric heating saves us money in other ways, too. Flammable electric heat means that our house and furnishings stay cleaner. There's no expensive furnace repairs that come when you

need it most. And best of all, we still have the wonderful feature of individual room control."

So do what the Hickses did. See your KU heating specialist. He'll show you how easy it is to make the switch to electric heating. Remember, you can't heat electric heat!



KU
SYMBOL OF SERVICE

KENTUCKY UTILITIES COMPANY
an investor-owned electric company

50 FIRST CLASS ELECTRICALLY	FUELED COOKING BURNING	FAST WATER HEATING	CLEAN COOKING	PURIFY HOME AIR	FOOD PRESERVATION	LIGHT FOR LIVING
-----------------------------	------------------------	--------------------	---------------	-----------------	-------------------	------------------

RED TAG SALE

YOU Figure The Savings **Appliances and Television**
SALE BEGINS FEBRUARY 27 AND ENDS MARCH 7

FREE-3 GE HAIR DRYERS-FREE



Pick up a FREE registration blank at our store anytime during this sale.

You Do Not Have To Be Present To Win.



The first drawing for one dryer will be held on Saturday, Feb. 29 at 4 P.M. Drawings for two dryers will be held on Saturday, March 7 at 4 P.M.



GE RANGES

Now You Can Buy The Best At The Lowest Prices Of The Year.

\$1.75 Week



BIG 13.2 cu. ft. REFRIGERATOR-FREEZER

- 2-DOOR CONVENIENCE! BIG CAPACITY! BIG VALUE!**
- Zero-degree freezer — 3.1 cu. ft. — holds up to 108 pounds. Door shelf for 1/2 gal. ice cream cartons. 2 mini-ice-ice trays under wire rack cover for easy tray removal... rack serves as handy shelf.
 - Automatic defrosting refrigerator section.
 - 4 cabinet shelves. One slide-out.
 - 2 porcelain vegetable drawers.
 - Butter compartment.
 - Door storage. Bottom shelf holds 1/2 gal. milk containers, tall bottles.

FAMOUS GENERAL ELECTRIC DEPENDABILITY



\$29950

Model TB-304X **\$24950**

Entire TV Inventory At Special Sale Price! ***

\$9950

\$1.25 Week

\$2.75 Week

Only General Electric... has the **MINI-BASKET***

Model WA-852

Mini-Basket washes delicate loads, leftover loads, little loads and uses little water.

MEADOWS & CRAGER GOODYEAR

PHONE 784-5096 MOREHEAD, KY.

MORE PEOPLE THAN EVER ARE SHOPPING AT IGA!

IGA LENTEN VALUES



Crisp, Pascal
Celery
Large Stalk **19¢**

Idaho **POTATOES** 10-lb. Bag **59¢** Red Button
Golden Finger **CARROTS** 1-lb. Cello **9¢** Green PEPPERS Each **9¢**



Campbell's
TOMATO SOUP
10 1/2-oz. Can **3 For 29¢**



Kraft
VELVEETA
Cheese Spread
2-lb. Loaf **79¢**

OvenFresh **BREAD** **10¢**
LIMIT 2 LOAVES WITH \$2.00 ORDER

IGA Elbow **MACARONI** 12-oz. Cello **2 For 29¢**
IGA **PANCAKE MIX** 2-lb. Box **29¢**
IGA Waffle **SYRUP** 21-oz. **39¢**
MuchMore Evaporated **MILK** Tall Can **10¢**

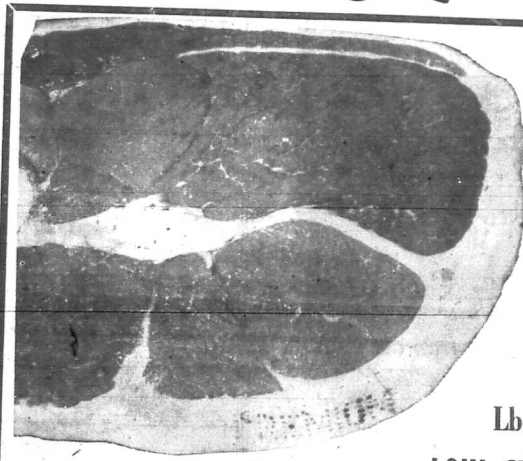
Martha White **MEAL** 25-lb. Hot-Rize **99¢**

IGA Saltine **CRACKERS** 1-lb. Box **19¢**

Stokely's **SHELLIE BEANS** No. 2 1/2 Can **19¢**
New Blue **SILVER DUST** Large Size **29¢**
Morton's **SALT** 21-oz. **9¢**
Hawaiian **PUNCH** 16-oz. **3 For \$1**

IGA Enriched **FLOUR** Self-Rising 25-lb. Bag **\$1.59**

Butter Kernel **CORN** Cream or Whole Kernel
5 For 69¢
303 Can



TableRite
Round Steak
Lb. **69¢**

Allen's
IGA
FOODLINER
8-6 Mon.-Thurs.
8-8 Fri.-Sat.

Quantity Rights Reserved
LOIN STEAK Lb. **89¢**
T-BONE STEAK Lb. **99¢**
RUMP ROAST Rolled, Boneless Lb. **89¢**
SAUSAGE Fisher's 2-lb. Roll **59¢**
WIENERS Skinless Camp Brand Lb. **49¢**
SLAB BACON By The Piece Lb. **29¢**

BEAUTIFUL
"NORWAY LEAVES"
MELMAC
FREE
START YOUR SET TODAY

BONUS COUPON IGA

Norway Leaves SAUCER FREE With This Coupon and \$5.00 or More Order.

Offer limited to one coupon per family per week.

Name _____ Address _____

This Coupon Good Thru Wednesday, March 2.

Follow this 16-week promotion and you will have 4 cups, 4 saucers, 4 salad plates and 4 utility bowls FREE! Companion pieces to finish your set may be bought at your IGA store. Look for weekly specials on these items during the next few weeks at sale prices below retail!