



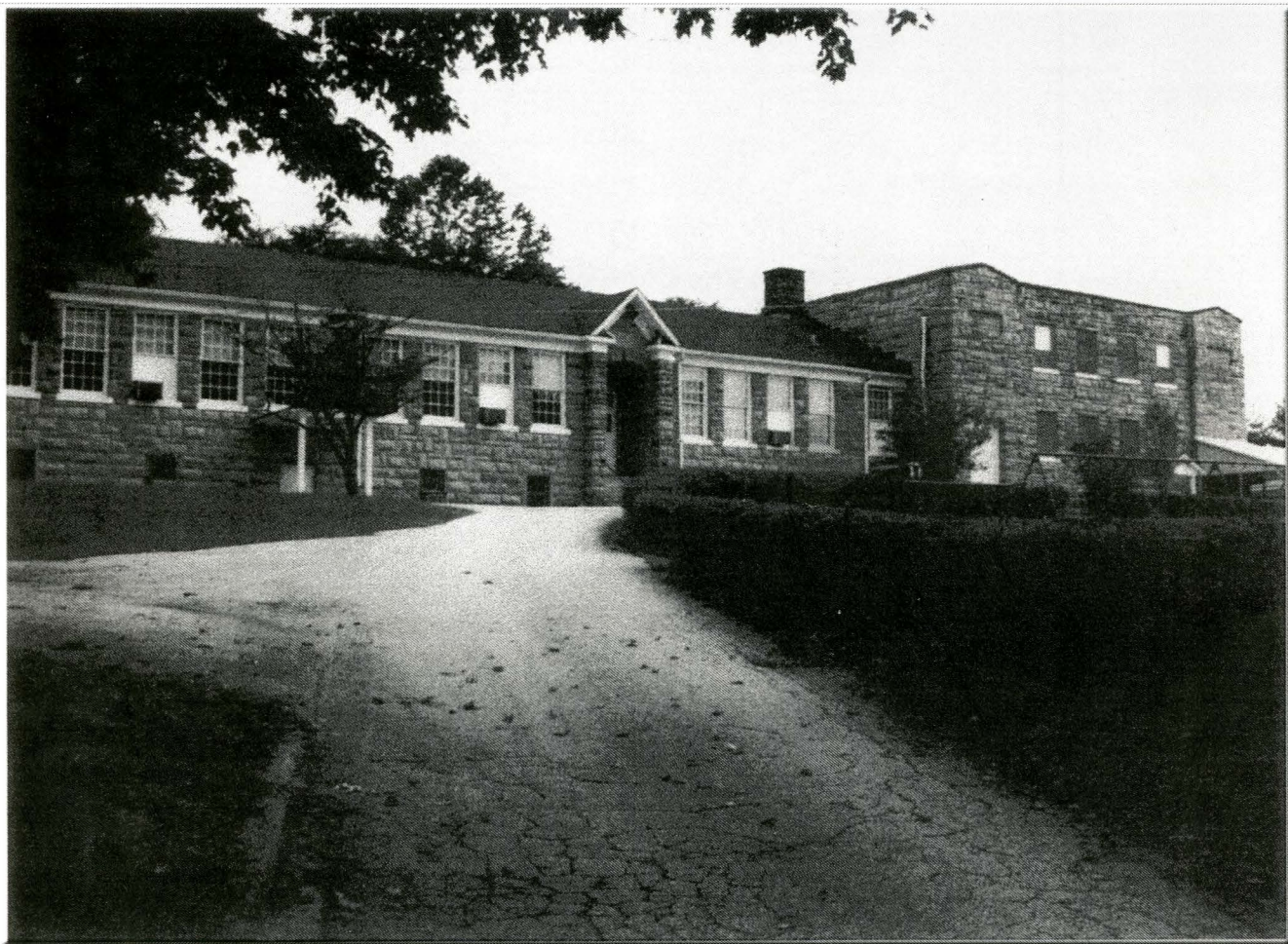
Ellettsville School Teachers
1940s

R - ?, Mabel Alfrey,
EUNICE CREEP

F Virginia Green,
Lyda Messer Caudill, ?
Ethel Patton, ?, Lottie
McBryer Roy

From The Collection Of:
Dr. Jack D. Ellis Supt.
552 W. Sun St.
Morehead, KY 40351
606-784-7473

Elliottville School



Built in 1939 by WPA

The Elliottville (Hogtown) School no longer educates children but still has an importance in the community. It is now only a shadow of it's once glorious past.

Similar school structures are still standing. Farmers School is a delightful Antique Center full of historical items to both view and also to purchase.

Haldeman School has been vacated and left to decay.



ELLIOTTVILLE SCHOOL
CLASS OF
1968

Photographed in Hi-Fidelity Natural Color

BY

Cham - Park

305 LEXINGTON AVENUE

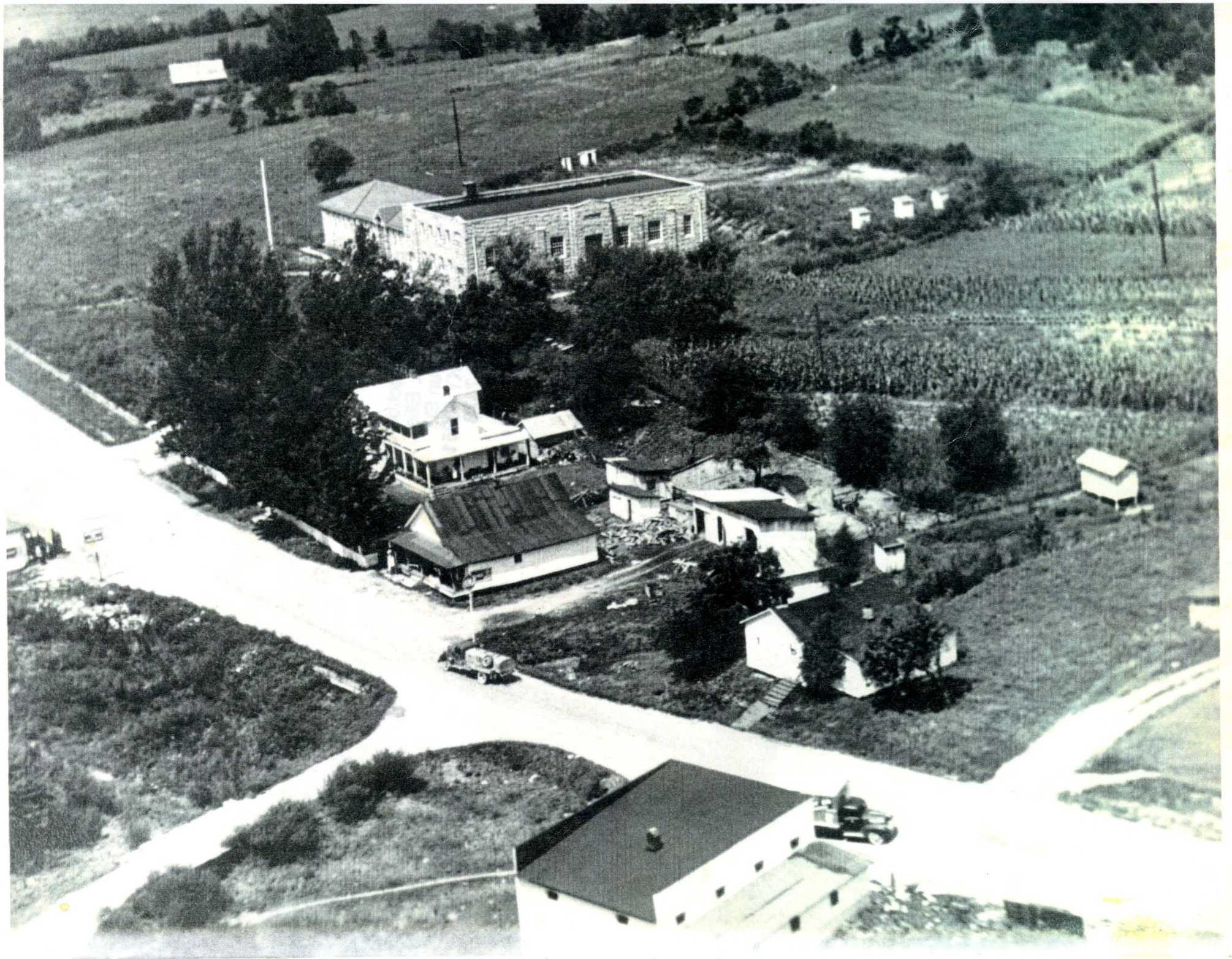
VANCEBURG, KY.

PHONE SWIR 6-4641

76501

Sch. - R.C.

From The Collection Of:
Dr. Jack D. Ellis
552 W. Sun St.
Morehead, KY 40351
606-784-7473



Elliottsville School before Rt. 32 was paved

1938

From The Collection Of:
Dr. Jack D. Ellis
552 W. Sun St.
Morehead, KY 40351
606-784-7473



Elliottville School
Grades 7-8-9
1950 - 1951



From The Collection Of:
Dr. Jack D. Ellis
552 W. Sun St.
Morehead, KY 40351
606-784-7473

Jack Ellis Teacher-coach ^{UPPER}
Thelma Stidham. PRINCIPAL
Elliottville Jr High School

Grades 7-8-9

1950-~~51~~

LEFT CORNER

HEALTH DEPARTMENT PLANS FOR GREAT DAY PROGRAM MAY 1

Elliottville School Judged To Be Model

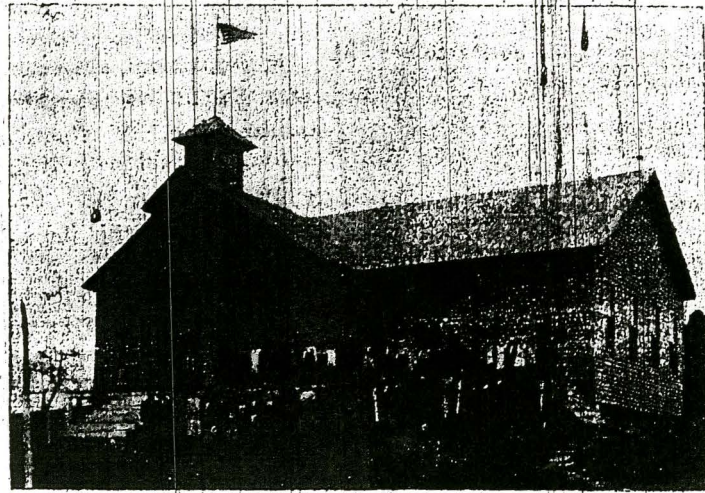
DANI ON R INTO

Home E

Methodists To Hold Revival

The official board of the Morehead Methodist Church has invited Rev. V. L. Moore, D. D. Presiding Elder of the Lexington District to hold our revival meeting from Monday Evening, April 18 to Sunday Evening, May 1 1932.

It is hoped that this meeting will be community wide in its scope and effect. We are not thinking in terms of our church, but in terms of Christianity that will effect our community. Rev. Moore has a splendid personality. He makes friends wherever he goes. It is hoped that everyone will make their plans to attend as many of these services at possible.



The Elliottville School has been chosen as the model or ideal school of Rowan county for the year 1931-1932. This selection was made by the County Superintendent of Schools, Mrs. Lyda Messer Caudill, after a careful checkup of the score card of standards set up for the county schools at the beginning of the school term by the County Board of Education.

Some of the accomplishments stressed in the score card and attained by the pupils, parents, and teachers of the Elliottville School include the following:

Development of Ideals and Love of Beauty. This included the beautification of both the exterior and interior of the school building, by pictures and the planting of trees.

School Fair and Scholastic Activities. In this the Elliottville School won first place in the school section of the County School and Agricultural Fair in October, 1931.

The Improvement of Rural School Life and Health. Included in this item were practices of cleanliness, teaching of health and maintaining

healthful conditions on the school ground.

Encouragement to Professional Growth. This was carried out by the teachers in trying to better prepare themselves for service while in service.

Education of Citizens with regard to the work of the schools.

Better Organization of Schools by carrying out the State Course of Study.

Creation of a Better School Spirit.

Improvement of Records and Higher Percentage of Attendance.

The score card as used was approved by the County Board of Education and by the State Education Department at Frankfort.

Among some of the individual acts carried out by the Elliottville School during the year include:

1. A community Field Day.
2. Carrying away the first prize in the School Parade and winning a beautiful loving cup for the best school display at the fair.
3. The largest pie supper held in

(Continued on Page 2)

The Home was purchased last fall for improvement of their facilities and have been really business. This indicates that at least has not from the effect.

Mr. Rich's building which term of year and painting really attract his offices wholesale dealing of the elected and re a modern facility to conduct in tion with all necessary for

Mr. Rich for the age roleup Productous "Phillips" the first of in this issue new gasoline for sale, Mr.

"The Phillips" been recently by the United Crops for a gallons of a ing a period 1932. The m is the army's of aviation g number of 8' enheit.

The gasoline Petroleum w cent natural tion of tetra This mater my zones two include need



REV. V. L. MOORE

MRS. LEE KIDD DIES AT AGE OF 76 YEARS

With three days of the midsemester enrollment period gone, thirty five more students have already en-

A new addition to the Midland Trail Hotel has been started by Mr. John Cecil, who is pouring the foun-

Enrollment At Additional Rooms College Largest At Midland Trail