

JOHNSON CA. J. N. LIBRARY
MOREHEAD STATE UNIVERSITY
MOREHEAD, KENTUCKY

THE TEACHERS COLLEGE SLANT

MOREHEAD STATE TEACHERS COLLEGE

MOREHEAD, KENTUCKY



MEMBER

Southern Association of Colleges and Secondary Schools
American Association of Teachers Colleges
Kentucky Association of Colleges



Campus Views

Published quarterly by the Morehead State Teachers College,
Morehead, Kentucky.

Entered as second-class matter, April 3, 1931, under the Act of
August 24, 1912.

Volume 8

March, 1938

Number 5

JOHNSON CAMDEN LIBRARY

MOREHEAD STATE UNIVERSITY

MOREHEAD, KENTUCKY

MSU ARCHIVES

THE
TEACHERS COLLEGE SLANT

MOREHEAD
STATE TEACHERS
COLLEGE

MOREHEAD, KENTUCKY



MEMBER

Southern Association of Colleges and Secondary Schools
American Association of Teachers Colleges
Kentucky Association of Colleges



Campus Views

MARCH, 1938

Dear Reader:

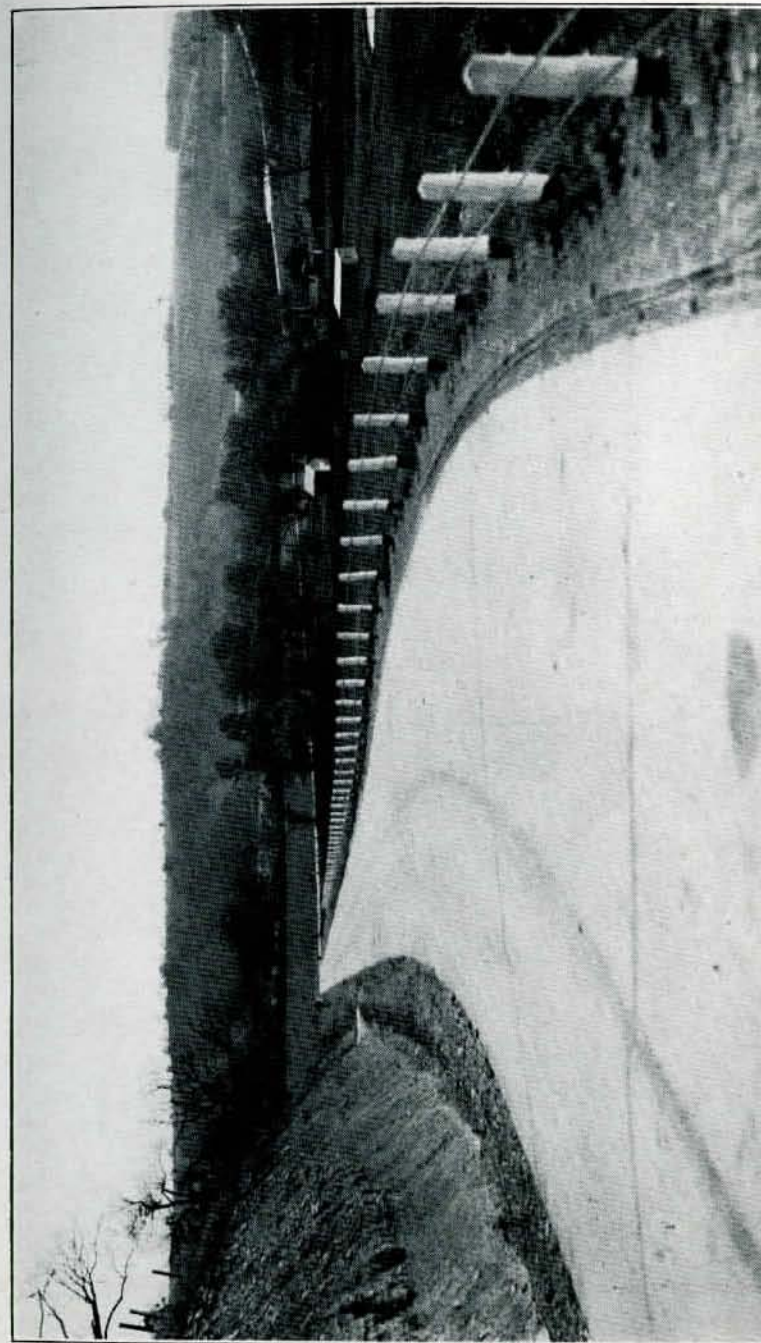
We know it is not possible for everybody in Kentucky to visit the Morehead State Teachers College Campus and see the places that we think are beautiful, the nooks that we love, the spots hallowed by memories. We wish it were possible. It was with the knowledge, however, that circumstances prevent such a visitation that this booklet was prepared.

Obviously, one picture or a series of pictures cannot bring before you accurately the beauties of the Campus, the background, the surroundings, the scenery. We have included spots, views from different angles, random shots of buildings. It was not possible to include everything but we hope that you will like what you see on these pages so well that you will be induced to visit our college and view our buildings and grounds.

If this booklet gives you just an idea of how beautiful the Morehead Campus is, it will have served its purpose.

Very truly yours,

H. A. BABB, President.



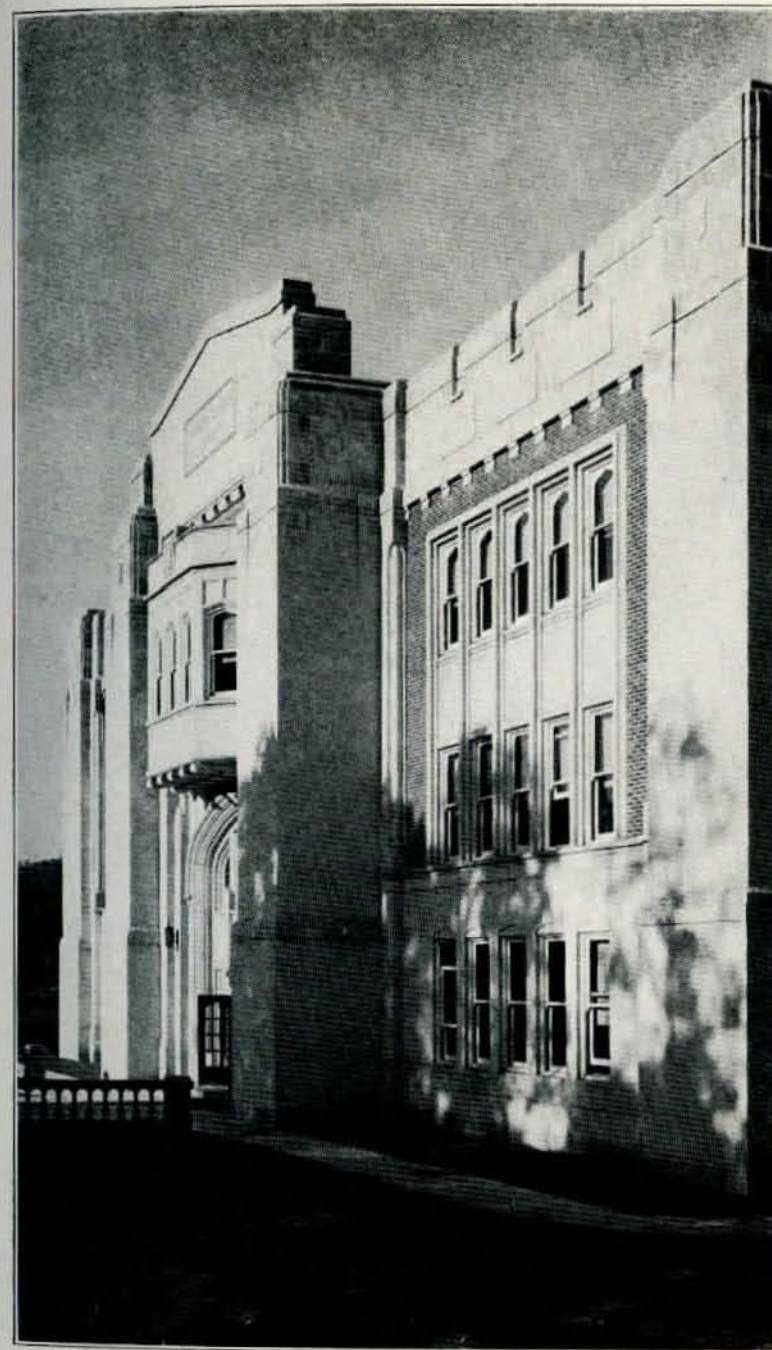
LONG STRETCHES OF HIGHWAYS WINDING THROUGH THE VALLEYS LEAD INTO MOREHEAD



BOTH BENCH AND PINE INVITE YOU TO LINGER AWHILE AND REST



THOMPSON HALL
A Dormitory for Men.



THE JOHNSON CAMDEN LIBRARY
The grace and dignity of this structure reflect the culture of the volumes herein housed.



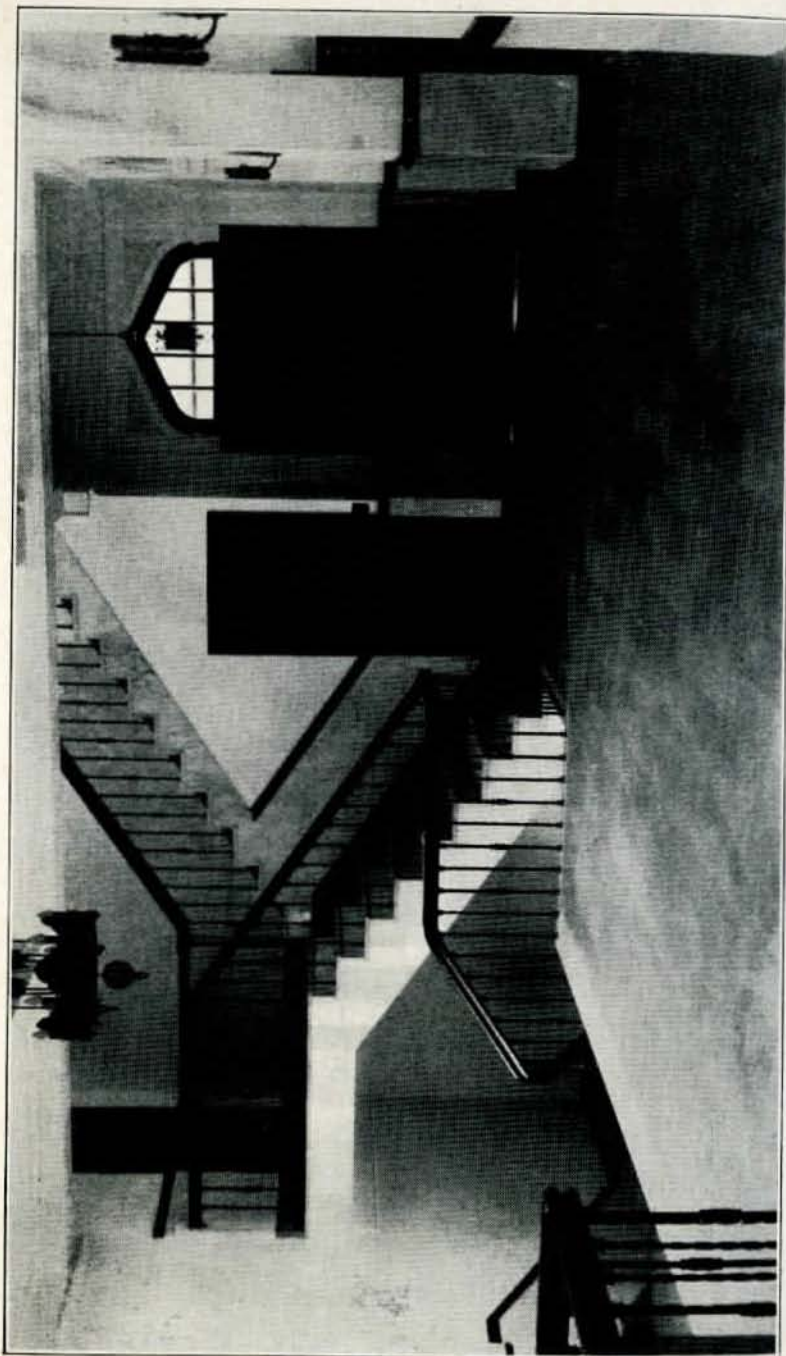
ALLIE YOUNG HALL
A modern dormitory for women.



A PLACE TO REFLECT AND MUSE AWHILE



HERE IT WAS IN THE LONG AGO HE FILLED FOR
HER A SPARKLING CUP



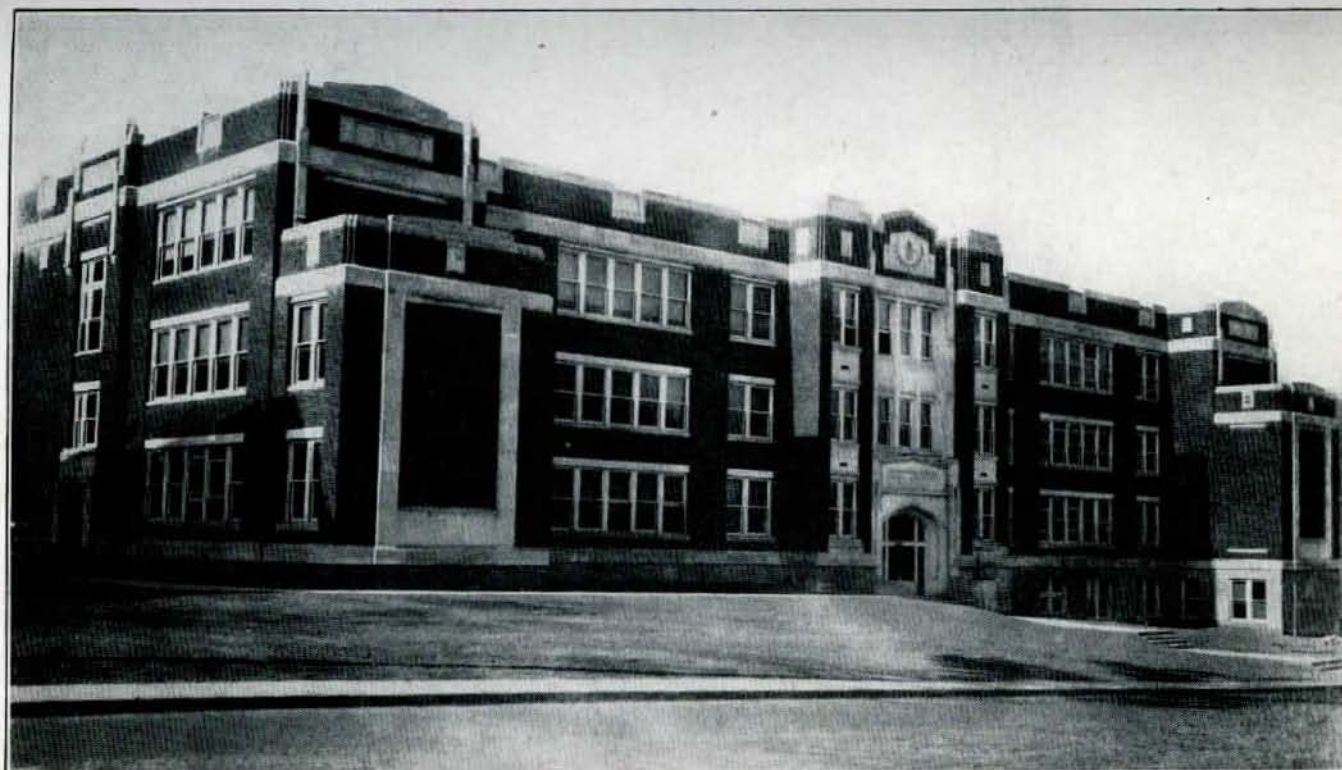
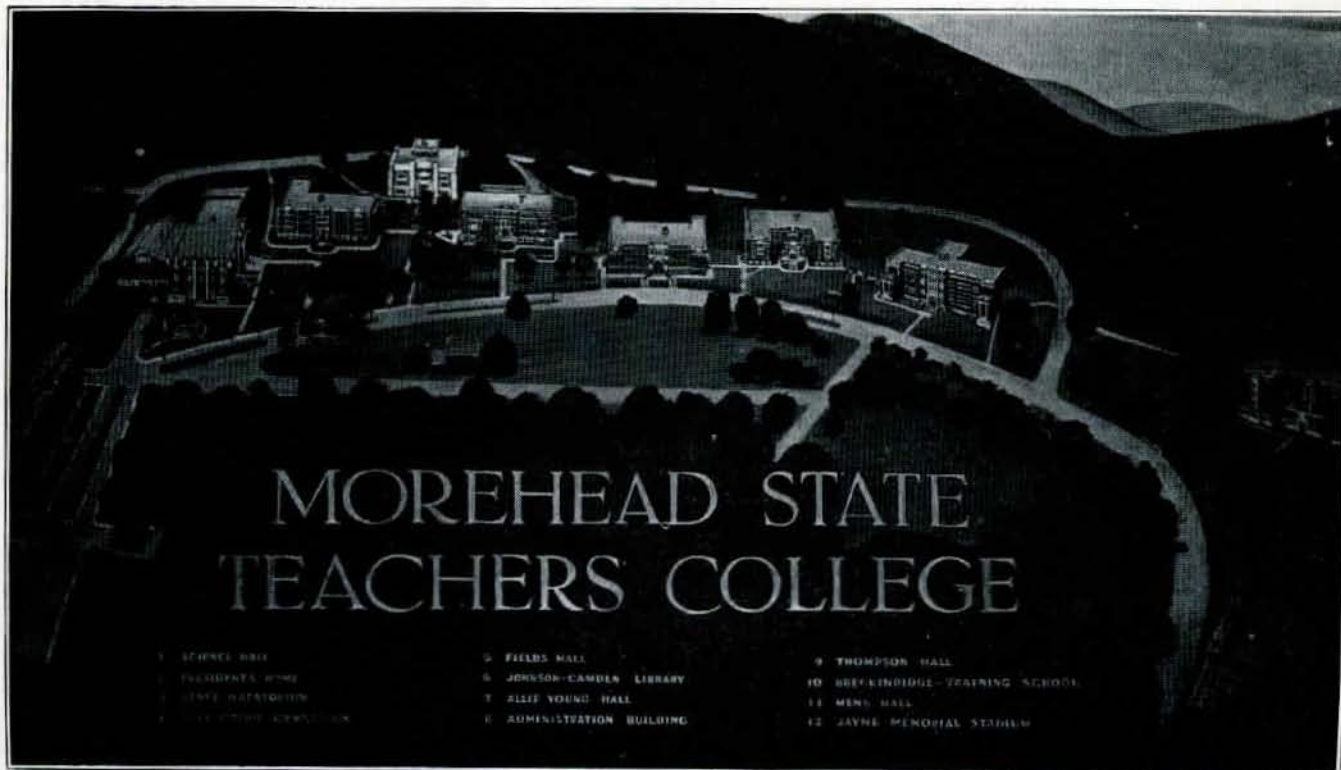
CORNER IN THE LOBBY OF THE LIBRARY



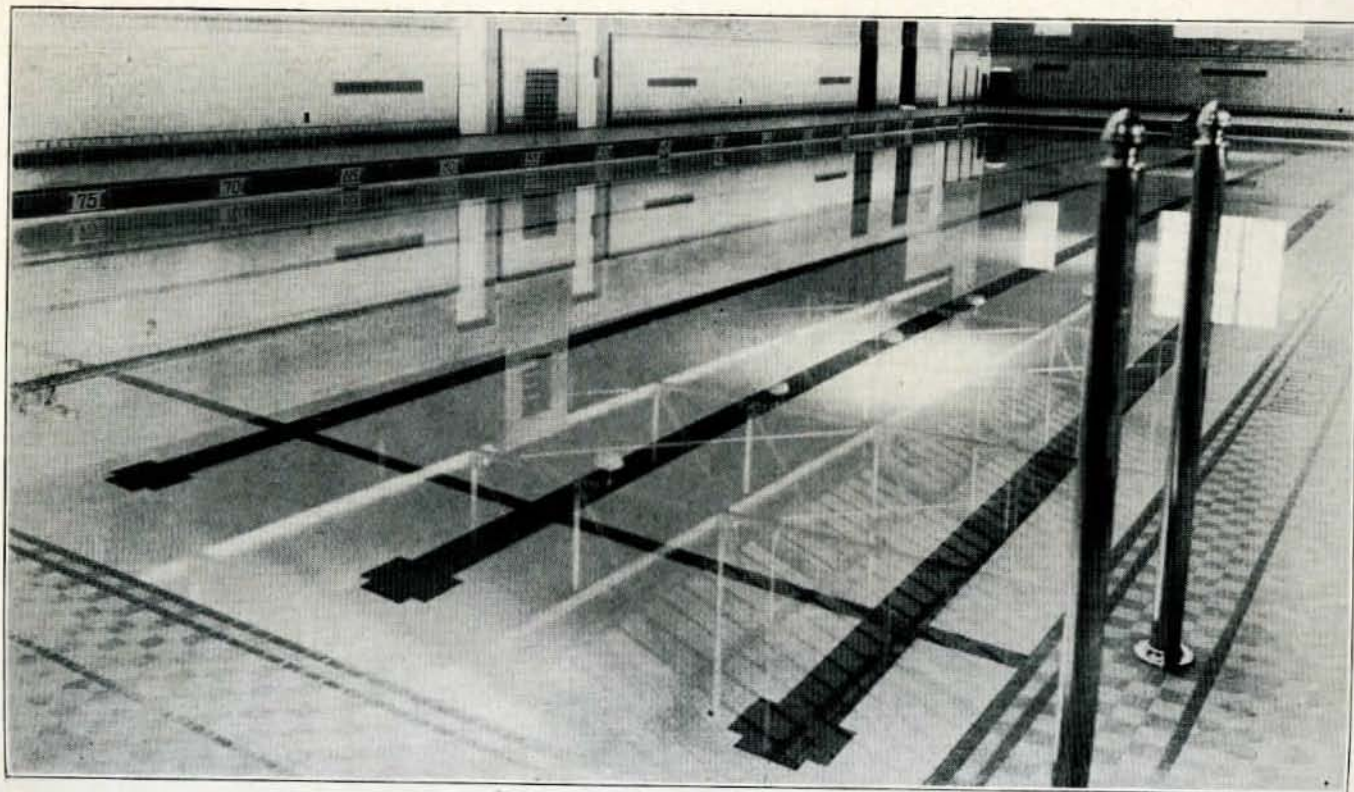
A CAMPUS SCENE



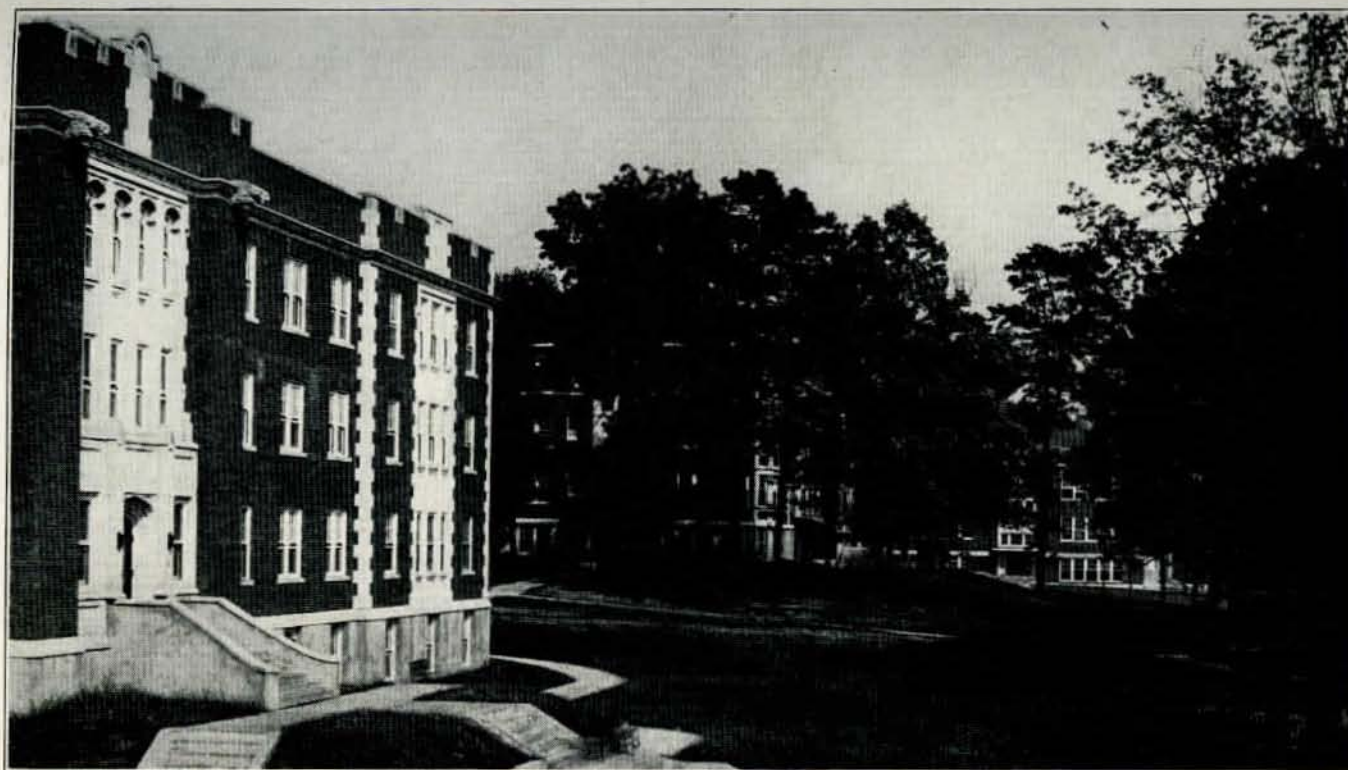
THE PRESIDENT'S HOME



THE ROBERT J. BRECKINRIDGE TRAINING SCHOOL.
The Teacher-Training Laboratory.



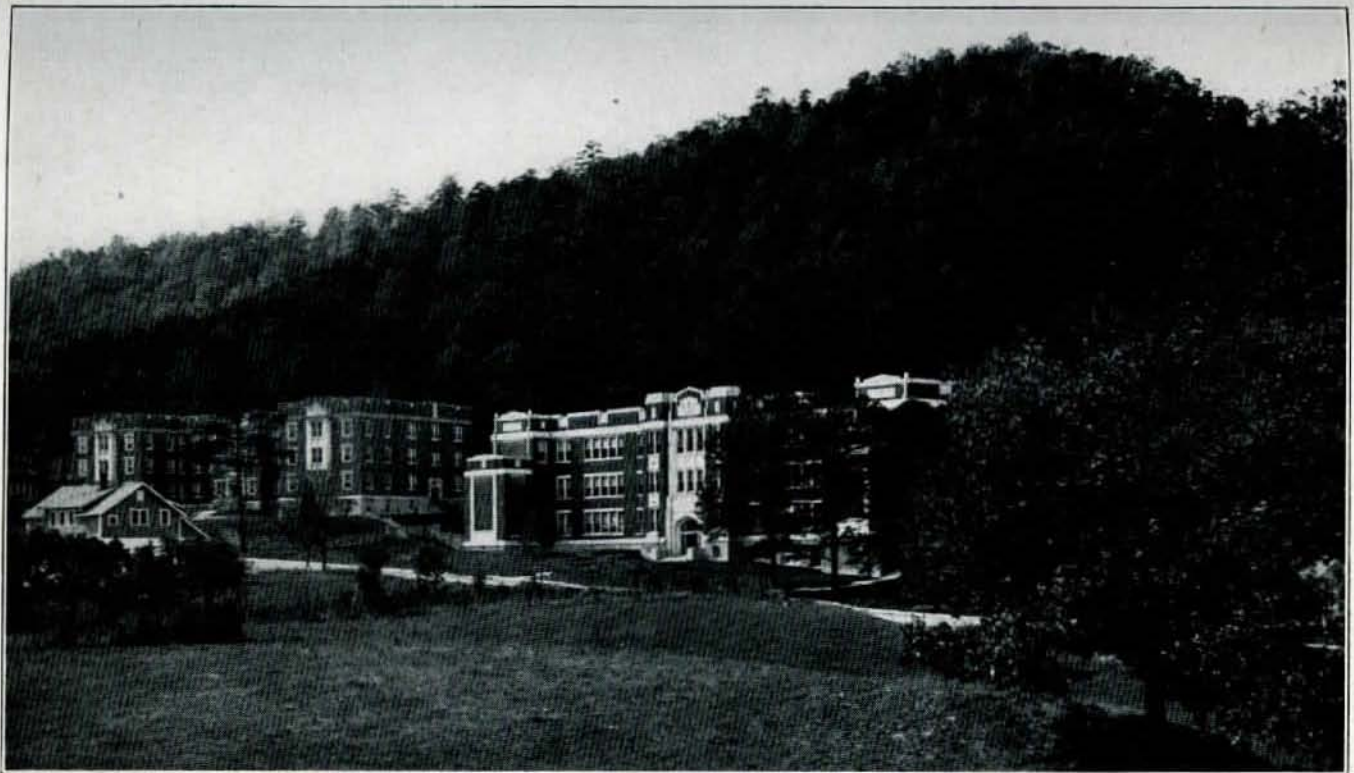
THE NATATORIUM
A refreshing plunge into this aquatic mirror adds zest to those who toil.



VIEW LOOKING EAST FROM FIELDS HALL



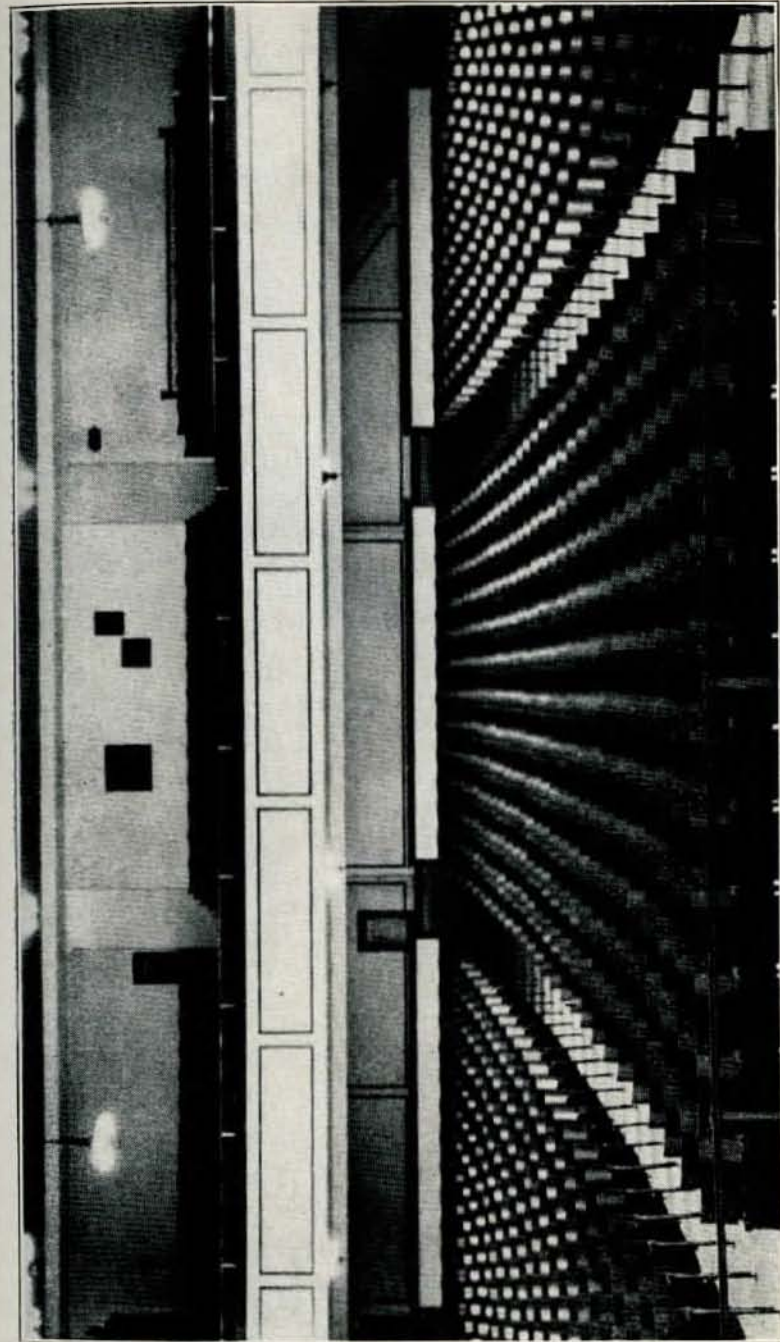
LOOKING ACROSS THE CAMPUS FROM THE PRESIDENT'S HOME



A CAMPUS VIEW SHOWING THE HILLS IN THE BACKGROUND



THE CAMPUS IN AUTUMN



THE AUDITORIUM

The student here for an hour may lay aside his books, and yet still fuller in wisdom grow.

Q. What courses does Morehead offer?

A. Morehead offers all courses leading to the A. B. and B. S. degrees, the Provisional Elementary certificate, the Provisional High School certificate, the Standard Elementary certificate, the certificate for administrators and supervisors, and the attendance officer's certificate.

Q. Is Morehead's faculty well trained?

A. Morehead's faculty of sixty members has eleven people holding the degree of doctor of philosophy, two with three years of graduate training, and forty-two with the master's degree.

Q. What sort of a physical plant does Morehead have?

A. Morehead has the following buildings in its plant, all modern, fireproof, and of the latest design in school architecture: two dormitories for men, two dormitories for women, the administration building, science hall, training school, library, auditorium-gymnasium, natatorium, President's home, stadium, and power plant.

Q. Just where is Morehead located, in relation to my home?

A. Morehead, the county seat of Rowan County, is about in the center of eastern Kentucky, and is the closest state-supported senior college to residents of most of the eastern Kentucky counties. It is located on U. S. highway 60, on the Chesapeake and Ohio railroad line, and within easy driving distance of the shopping centers of Lexington, Ashland, Huntington, and Cincinnati.

Q. What about the climate at Morehead?

A. Morehead is located in the mountains of eastern Kentucky and has unusually cool nights in the summer, thereby permitting unbroken rest.

Q. What sort of a laboratory school does Morehead have?

A. Morehead has one of the best-equipped laboratory schools in the South, and expert teaching from the first grade through the twelfth may be seen throughout the day.

Q. Does Morehead offer any opportunities for recreation?

A. Morehead has several well-kept tennis courts, a lovely thirty-foot by ninety-foot swimming pool, mountain trails nearby

for those who prefer hiking, intra-mural athletics of all types, and many other physical education activities. Morehead operates its own picture show where the latest releases are shown weekly, and special lecturers and lyceum numbers are brought before the student body from time to time.

Q. Will I feel at home at Morehead?

A. Morehead has the friendly atmosphere of the small school. It does not have the coldness and aloofness found on the campuses of many of the larger schools.

Q. Approximately what will it cost me to attend Morehead?

A. The expenses for a semester are about as follows:

\$ 65.00	Estimate for board in the college cafeteria
27.00	Room rent in the dormitory (18 weeks @ \$1.50 per week)
25.00	Incidental fee
10.00	Estimated cost of books
3.00	Deposit fee (This is returned at the end of the semester less any property damage that the student may have caused)
1.00	Medical service
1.00	Student activities fee
.50	Postoffice box rent
<hr/>	
\$132.50	

The expenses for a summer term are about as follows:

\$ 17.50	Estimate for board in the college cafeteria
7.50	Room rent in the dormitory (5 weeks @ \$1.50 per week)
12.50	Incidental fee
7.50	Estimated cost of books
3.00	Deposit fee (This is returned at the end of the term less any property damage that the student may have caused)
.50	Medical service
.50	Student activities fee
.25	Postoffice box rent
<hr/>	
\$49.25	

Q. Is the training school in session during the summer?

A. The high school will be in session for both terms; the elementary school will be in session for only the first term.

- Q. If I am not interested in teaching, are there other courses that I can take at Morehead?
- A. Students who wish to pursue law, medicine, engineering or other professional lines of activity will find splendid courses upon which to build their professional training.
- Q. Does Morehead offer a course in Commerce Education?
- A. Morehead does offer such a course, including shorthand, typewriting, accounting and other subjects leading to a thorough course in business training.
- Q. What departments does Morehead have?
- A. Morehead has departments of Agriculture; Art; Commerce; Economics and Sociology; Education; English including Library Science; History and Political Science; Home Economics; Industrial Arts; Languages; Mathematics and Physics; Music; Physical Education; Science, including Biology, Chemistry and Geography and Extension.
- Q. Is Morehead an accredited school?
- A. Morehead is fully accredited, is a member of the Southern Association of Colleges and Secondary Schools, the American Association of Teachers Colleges, and the Kentucky Association of Colleges.
- Q. What extra-curricular activities does Morehead have?
- A. Morehead is a member school in good standing in the Southern Intercollegiate Athletic Association, has good football and basketball teams, and encourages its students to active participation in debating, oratorical, choral, band and orchestral work.
- Q. Should I get my degree from Morehead, will the placement bureau help me secure a position?
- A. Yes. Morehead's graduates are located in many of the best school systems of this and adjoining states.