

The Morehead News

Formerly Rowan County News - Name Changed January, 1963

10¢ On Newsstands

BY MAIL

12 Months	\$12.00
6 Months	\$6.00
3 Months	\$3.00
Outside Kentucky, 12 Months	\$14.00
Outside Kentucky, 6 Months	\$7.00
Outside Kentucky, 3 Months	\$3.50

Volume No. 80

Kentucky Press Association

MOREHEAD, KENTUCKY, THURSDAY MORNING, DECEMBER 26, 1963

Member Association

Number Fifty-Two

Two At One Time

Fire Department Fights One Blaze, Another Breaks Out

Three destroyed two more homes and damaged a third in this section during the week, with one of the blazes occurring Friday while the Morehead Fire Department was combating another blaze less than half a mile away.

Fire Chief C. B. McCullough said three members of the department were fighting one in the Mill branch section near Clearfield, a second broke out in a nearby home, but when firemen reached the scene there was little, or nothing, they could do.

Earlier, a fire shortly after noon Thursday destroyed a house on US 40 near the Big Perry Road.

All three were started by overheated stoves, McCullough reported.

The three alarms brought to six the total number of calls answered by the Morehead volunteer unit since Monday.

Friday's first blaze was at the home of Chester Johnson on Mill branch. The fire chief said the house had been installed too close to a line and caught fire when a stove became overheated.

Owned by Clifford Barker, the frame house received minor damage, about 20 minutes was required to control the flames.

After they way back to the fire station, members of the department sighted the other blaze, which had not been reported, when they arrived at the scene, the roof was falling in and one wall had collapsed.

Occupied by the family of George Kiser, the house was owned by Stanley Kiser.

The house was afire all over when the blaze was discovered.

Mrs. Kiser, at home at the time, managed to salvage some clothing from the flames, but even so most of these were burned.

Other than a small amount of clothing, the house and all its furnishings were lost.

The fire near Big Perry Thursday afternoon destroyed a frame house owned by Jim Erick and owned by Langley Wilson.

Erick was away at the time of the fire and the structure, along with all furnishings, was destroyed.

The alarm was received about 1:15 p.m.

When reported flames were being out of the roof of the house when they first sighted it, McCullough said the building was well saving when firemen arrived.

One house at Farmers and another nearby were destroyed last Sunday by fire, and a church near Farmers was damaged by a minor blaze.

In addition, the home of Mr. and Mrs. James Williams on Elizabeth Street was damaged Monday night.

'Toys For Tots' Drive To End Tuesday Noon

Members of the Morehead Junior Chamber of Commerce will wind up their "Toys for Tots" drive Tuesday at noon when they turn their attention to distributing the items they have received.

Designed to insure that no child in Rowan County—no matter how near—be left out on Christmas, the effort has sought new and repaired toys with which to carry out the program.

Boxes at Allen's IGA and Ray's Sweeney will be picked up at noon Tuesday and the Jaycees will distribute their collections later that same day.

Flora Gulley, 62, Claimed On Tuesday

Mrs. Flora Gulley, wife of Harve Gulley, died Tuesday following a long illness.

Mrs. Gulley passed away at St. Claire Medical Center after having been hospitalized for about a week. When the hospital opened July 1 Mrs. Gulley was the first patient admitted to the facility.

A daughter of the late Scott and Arlene Williams Buckner, she was born in Rowan County, Dec. 25, 1901.

On May 30, 1918 she married to Mr. Gulley, who survived. Her survivors include these 11 children: Harold Gulley, Mrs. Faye Brown and Mrs. Eleanor Nichols, all of Morehead; Mrs. Arlene Frisley and Mrs. Barbara Lewis, both of Indianapolis; Ernest Gulley, Williamsburg; Carl Gulley, DeBolt; Harv Gulley, Muncie, Ind.; William Gulley, Lynn, Ind.; Wilson Gulley, Columbia, Ind.; Howard Gulley, Richmond, Ind.

Six brothers and sisters also survive. They are: Howard Buckner and Mrs. Dessie Patterson, both of Cincinnati; Ernest Buckner, Newkirk, N.Y.; Lloyd Gooden, Miami, Fla.; Lillian Beckman, Dunbar, W. Va.; Laura Wallace, Marion, Ind.

Mrs. Gulley was a member of the Pentecostal Church.

Funeral services were held Friday morning in the First Pentecostal Church on North Park, Rev. Jack Boggs officiated.

Burial was in Clark Cemetery under the direction of Lane Funeral Home.

Palloozars were Rev. John Clark, David Niggles, Dallas Brown, Fred Brown, Rance Black and Lake Plank.

State Group Details Morehead's Resources In A New Brochure

The Kentucky Department of Commerce, in cooperation with the Morehead Chamber of Commerce, has prepared a new brochure describing and tabulating the industrial resources of Morehead and Rowan County. Industrial equipment and numbers of workers available for jobs also are presented for Rowan County and adjacent counties.

It is expected that the booklet will be printed and ready for distribution within three weeks.

Material for the brochure was compiled by the Community Development Division of the State agency and by the Morehead Chamber of Commerce.

The new publication presents up-to-date data on the following projects, all of interest to industrialists considering locating new production facilities in Morehead and Rowan County: Population and labor markets, manufacturing sites, manufacturing industries, transportation, utilities and fuel, local government and services, taxes, housing, health and educational facilities, libraries, churches, communications, clubs and organizations, recreation, community improvements, natural resources including agricultural products and water, weather, soils and climate, and other factors.

An appendix, the publication also presents a short history of the area, breaks down employment by industries, and provides other information of statewide application concerning taxes, city bonds issues for industrial buildings, instructions for filing development corporation articles of incorporation, and lists State agencies which cooperate in advancing the economic development of Morehead.

Excerpts from the new publication make the following points on resources and recent or planned area and community improvements of particular interest to the industrial prospects.

The population of Morehead—4,170 in the 1960 census—showed a 34.6 percent increase from the 1950 census.

The Morehead Planning and Zoning Commission has completed planning projects that include a zoning ordinance, subdivision plan, housing condition survey and plan, housing land use plan, base map, and zoning land use map.

A choice industrial site of 20 acres is available one mile north-west of Morehead. The site, highway, and electric service, and sewer and gas and electric service are available for the site.

Rowan County has 151,000 acres of forested land, or 83 percent of the total acreage. Principal tree types are oak, pine, hickory, beech and yellow poplar.

Morehead has 24 manufacturing firms including 14 that make lumber or use wood products, two clothing plant and firebrick plant are located in the Morehead area.

The city is served by U.S. Highway 40 and Kentucky Routes 32 and 519. The new Interstate 64 route will be located two miles north of Morehead.

Morehead has both daily freight and passenger railroad service. The city is also served by three truck lines and one bus line.

The new Municipal Airport with blacktop runways for light aircraft was completed in 1962 at Farmers and community seven miles west of Morehead. Construction of a new air line service is available at Lexington, 17 miles from Morehead.

The site for the Cave Run Dam flood control project is eight miles southwest of Morehead on the Turning River. Congress has approved \$20,000 for engineering planning of the project.

Morehead has both storm and sanitary sewers with a disposal

plant built to serve a population of 10,000. Sewage system capacity is 1,500,000 gallons. Raw water is purchased from Morehead State College, whose reservoir has a capacity of 120,000,000 gallons.

A \$400,000 county high school was completed at Morehead in 1961. A new \$222,000 county elementary school was completed recently at Cranston near Morehead. The Morehead Elementary School has a \$153,000 addition completed in 1963.

A new hospital with 50 beds, costing \$1,000,000, was opened in 1963 at Morehead.

New recreational facilities available for Morehead residents include a nine-hole golf course and a 36-lane bowling alley.

Morehead is located within easy driving distance of Caves State Park, Greenbo Lake State Park, Blue Licks Battle Field State Park and Natural Bridge State Park.

The brochure will be used by the Morehead Chamber of Commerce and by the Kentucky Department of Commerce, other development agencies and utility and transportation companies in dealing with industrial prospects in the area. Just what facilities and resources are available in Morehead and Rowan County.

In addition, copies of the publication will be put in the hands of out-of-state plant location firms and many manufacturing companies with plant-location departments.

GOLDWATER'S VIEWS

Republican Sen. Barry Goldwater is undertaking to reassess his presidential prospects now that the whole political picture has changed. The senator, ranked No. 1 among potential Republican nominees, in public opinion polls said: "I don't think my support has changed from what it was." But sized up his prospects in what he called "a new ball game with a new pitcher."

Sen. Goldwater's views on his presidential prospects now that the whole political picture has changed. The senator, ranked No. 1 among potential Republican nominees, in public opinion polls said: "I don't think my support has changed from what it was." But sized up his prospects in what he called "a new ball game with a new pitcher."

Temperature Drops to 10 Below; 30-Day Forecast Calls For More

Unseasonably cold weather hung on with tenacity in this section as the week drew to a close.

Forecasting morning temperatures readings of 10 degrees below zero were the lowest of the season.

Previous lows had been near the zero mark.

The extremely cold weather also prevented from melting a two-inch snowfall which had hit the area earlier in the week.

While generally clear, contained icy spots which necessitated the exercise of caution while driving.

Weather forecasts were for a slowly warming trend, during the next few days, but the 30-day forecast for Dec. 15-Jan. 13 calls for temperatures much below normal during most of the period.

State police reports show that the left front wheel of the truck which was traveling east, was three feet to the right of the centerline of the highway when the impact took place.

Ice and snow covered the highway at the point where the wreck took place, Jennings reported.

Two other Wednesday mishaps were also caused, at least in part, by road conditions.

In Ronald Lee Skaggs, 18, of Ellettsville, told officers he lost control of his vehicle going up a hill.

— Turn to last page this section.

Auto Mishap Claims Paul Templeman

An automobile accident Friday night claimed the life of Air Force Sgt. Paul Templeman, son of Mrs. Goldie Templeman of Brandeburg, Va., Morehead.

Sgt. Templeman, who had been in service 22 years, was 30.

Details of the accident were unavailable, but a member of the family said it happened on Highway 95, a mile north of Crestview, Fla. The sergeant was stationed at nearby Eglin AFB.

Reports were that Templeman was en route to the home of a friend when the fatal collision occurred. He reportedly was alone in the small foreign car.

Funeral arrangements are incomplete. Burial is to be in Crestview, Fla., probably Monday.

Surviving are his wife, Mrs. Rhonda Templeman of Crestview, and two children, Michael and Paula, both at home.

Other survivors are his mother, and these brothers and sisters: — Turn to last page this section.

Babson's Predictions To Appear Next Issue

Next week's issue of The Morehead News will, for the 15th consecutive year, carry the nationally known Babson Business and Financial Forecast.

Prepared by one of the country's most eminent business commentators and investment advisers, Roger W. Babson, the annual advance look at business, government, election and other activities, has proved a remarkable 84 percent correct since its inception in 1914.

Babson has predicted that "1964 will be a year of major changes" and the feature which is to be carried next week will detail his ideas as to what these changes will entail.

Subjects to be covered include: general business, 1964 elections, tax cut, labor, inflation, agricultural outlook, stock market, real estate, cost of living and others.

This is the background which qualifies Babson to write his annual forecast.

American business has no more inspiring personality than Roger W. Babson, internationally known business commentator and investment adviser. An outstanding

feature of his philosophy has been his lifelong insistence on the importance of both religion and advertising in business.

Babson's forecast is an old-fashioned atmosphere—of hard work and hustle on a farm in Gloucestershire, England, where the Massachusetts Institute of Technology, when graduating, he turned its back on financial and business activities in which his father was engaged.

His exhortations, however, undermined his health: he contracted tuberculosis and died in 1937. "West as good as dead!" It was while he was convalescing from the dread disease that he worked out some of the possibilities and problems of business forecasting.

His weekly releases are used by over 400 newspapers and his financial reports by 20,000 corporations and individuals. His research work is carried on by a large staff of experts.

Babson Institute for Men; and, in co-operation with the late Mrs. Babson, developed Webster College for Women—both nationally-known educational institutions.

— Turn to last page this section.

Gas Consumption Up To Nearly Double Normal Usage Here

This Issue Is Early Because Of Holiday

This issue of The Morehead News went to press Sunday for distribution to most readers on Monday, because of the Christmas holiday.

The News' mechanical department will be closed the remainder of the week, but the business office will be closed only on Christmas day.

Deadline for next week's issue will be Monday, Dec. 20 at noon.

Consumption of natural gas in Morehead has averaged 2,510,000 cubic feet a day during the past week, more than double normal usage for this time of year.

Morehead Utility Plant Board Superintendent Clint Johnson said Saturday that the daily average for December, 1962, was 1,500,000 cubic feet per day, while the mark for this time of year, last week is in the neighborhood of 2,500,000 cubic feet. The latter figure is considered normal.

Despite the fact that temperatures have ranged from a high of 20 degrees above to 10 degrees below zero during the past week, only three or four of the city's some 1,500 gas customers have complained of low gas pressure, Johnson said.

In most cases he reported, the trouble was found in the heating equipment in the western part of the transmission and distribution system, but in one instance a regulator in a newly-installed section of line did freeze, causing difficulty until it was repaired.

The Utility Plant Board superintendent said construction of a line to the Thomas Anderson area is being maintained in the western part of the city last summer had alleviated all of the problems in maintaining the metering and distribution gas system "in the best condition it has ever been in."

Morehead's gas supply comes from a 30-inch transcontinental line owned by Tennessee Gas Transmission Corporation. The latter line runs up the North Fork of Triplet valley.

Four-inch gas mains carry the supply from the tap-on point to Morehead.

Pressure at the point where the lines meet is 700 pounds per square inch and by a series of intricate devices, the Utility Plant Board cuts this pressure down to "customers" at the point where it enters the consumer's lines.

Poison Info Centers Aid With Technical Data

Nine poison-control centers and one poison information center have been established in Kentucky, the University of Kentucky Agricultural Experiment Station found a fertilizer department pointed out this week.

The control centers maintain information files on potentially toxic substances which may be available, inhaled or absorbed through the skin. They provide technical information to physicians, veterinarians and other individuals whose activities and responsibilities occasionally require services of this kind.

The Poison Information Center is at the University of Kentucky School of Pharmacy. This facility maintains a committee of specialists available for consultation whenever regional center files lack sufficient information on a specific case.

— Turn to last page this section.

MSC Is Granted Membership In AAUW Group

Morehead State College has been granted corporate membership in the American Association of University Women, President Adron Doran announced.

Doran said, "Membership in the American Association of University Women is significant because the programs of the Association and the AAUW Educational Foundation have a definite relevance to American higher education."

Mrs. Inne M. Chapman, librarian at Morehead, has been accepted as liaison between Morehead State College and the Association. A graduate of the University of Illinois and Columbia University, Miss Chapman has represented her interest in the AAUW over a long period of time.

The AAUW Educational Foundation is engaged primarily in research and projects centered on the education and advancement of women.

The AAUW Journal, published monthly, and Women's Education, a quarterly bulletin of the Educational Council, Leonard Robinson and Paul Conley.

Mrs. Myrtle Conley, 67, Died Tuesday

Mrs. Myrtle Conley, a native of this section, died Tuesday in Perry, Ga. She was 67.

She was a daughter of the late Ezekiel and Lou Henderson Jones.

She was married to Ruby Conley, who survives, Aug. 16, 1917.

Other survivors include three sons, Paul Edward Conley, Coal Grove, O., and Emerson H. Conley and Bill Conley, both of Perry.

Other survivors include a brother, Alton Jones, Parsons, Tenn., and these five sisters: Mrs. Lula Stamper, Ashland; Mrs. Lena Estep, Ironton, O.; Mrs. Bertha McClurg, West Virginia; Mrs. Hazel Blinn, Waverly, O.; and Mrs. Irene Blinn, Shelby, O.

She was a member of the Presbyterian Church.

Funeral services were held Thursday afternoon at Lane Funeral Home. Rev. Russell Reynolds officiated.

Burial was in Caudill Cemetery.

Burialbearers were Bill Conley, Emerson Conley, Robert Blinn, Myrtle Conley, Leonard Robinson and Paul Conley.

Morehead State College has been granted corporate membership in the American Association of University Women, President Adron Doran announced.

Doran said, "Membership in the American Association of University Women is significant because the programs of the Association and the AAUW Educational Foundation have a definite relevance to American higher education."

Mrs. Inne M. Chapman, librarian at Morehead, has been accepted as liaison between Morehead State College and the Association. A graduate of the University of Illinois and Columbia University, Miss Chapman has represented her interest in the AAUW over a long period of time.

The AAUW Educational Foundation is engaged primarily in research and projects centered on the education and advancement of women.

The AAUW Journal, published monthly, and Women's Education, a quarterly bulletin of the Educational Council, Leonard Robinson and Paul Conley.

MOREHEAD JEWELRY STORES thought their girls would be like this Christmas, when this picture was snapped. From left: Sheryl Blinn, RFD 3; Mrs. Ernest Blinn, RFD 3; Vivian Herring,

Morehead; Judy Cole, Wilmington, O.; Charlotte Risher, Fikeville; and Mrs. Ernest Blinn, RFD 3; Vivian Herring,



MANY MOUTHS TO FEED—Many complain of the high cost for food, but government indexes indicate that food costs have risen less than most necessities or luxuries. Mr. and Mrs. Grover Roseberry, and daughter, Janice, Olive Hill, are shown with their shopping cart in a Morehead store.

WANTED ADS

Classified Advertising Rates
 No Classified Ads Accepted After 11 Noon Tuesday

Per word, first insertion	5¢
Per word each subsequent insertion of same ad without any change	3¢
Minimum charge (first insertion)	\$1.00
Minimum charge (each subsequent insertion)	60¢
Display Classified Advertising, per inch	95¢

Entered as Second Class Mailing Matter at Post Office - Morehead, Ky.

FOR RENT
 Two apartments and one house trailer. H. M. Meadows, phone 784-5637 or Mrs. Virgie Manning, phone 784-7286. c-4

FOR SALE
 1958 Volvo. Good condition. Morehead TV Cable, phone 784-4286. c-4

FOR SALE OR LEASE
 Concrete block buildings. Approximately 2,500 sq. ft. of floor space. 1212 E. overhead door. Phone 784-5790 after 4:00 p.m. or see U. W. Waltz. c-4

FOR SALE OR RENT
 Two-bedroom house. Barbour Court. Call Paul Osley, phone 784-5833. c-4

FOR RENT
 Apartments. Call State 4-2131. c-4

FOR RENT
 Two-story house about 3 miles from Morehead. Call 784-4761. c-4

FOR RENT
 Apartment. Semi-furnished or unfurnished. Four rooms and bath. On Sun Street, close to Post Office. Call 784-5112 or 784-5280. c-4

FOR RENT
 Furnished cottage near college. Call Lula Fultz at Dairy Mart Drive-in, phone 784-4572. c-4

FOR RENT
 Three-bedroom house at 203 Sun Street. Call 784-5709 after 5:00 p.m. c-4

FOR RENT
 Four-room house with bath, garage, in Tolliver Addition. Newly painted inside. Also 4-room furnished house with bath on Fleming Avenue. Mrs. Beulah Pennington, 116 Lyons Avenue. Phone 784-5284. c-4

TRAILER FOR RENT
 On Highway 515. \$25 per month plus utilities. City conveniences. See or call Ethel Adams, phone 784-5288. c-4

IF YOU WANT TO BUY, Sell or Mortgage

REAL ESTATE
 See
Alpha Hutchison

See Our Sales List For A
 ● HOME
 ● BUSINESS PROPERTY
 ● FARM
 Licensed and Bonded Real Estate Broker

Authorized Mortgage Loan Broker for The Prudential Insurance Company of America.
 Phone State 4-5305
 Morehead, Kentucky c-4

USED TRUCKS

'63 CHEVROLET
 1/2-Ton Pickup

'61 CHEVROLET
 3/4-Ton, 5-Speed Cab and Chassis

'60 CHEVROLET
 Tractor and Trailer

'59 CHEVROLET
 Tractor and Trailer

'59 GMC
 1/2-Ton Pickup

'57 CHEVROLET
 1-Ton Duell

'56 FORD
 Pickup - Utility Body

All Used Cars Are Checked for Alignment on the New 'John Bean' Visualizer!

Midland Trail Garage
 "Pioneers in Rocan County Transportation"

HELP WANTED
 Driver for dry cleaning service route in Salt Lick area. Must provide own transportation. Friendly person who lives in vicinity. Carl (Buster) Day One Hour Dry Cleaning, phone 784-4773. Morehead, Ky. c-4

BALDWIN PIANOS & ORGANS
 Best values in new and used instruments. Easy payment plan. Zwick Music Co., Ashland, Ky. c-4

HOME BAKERY
 For delicious homemade cakes and pies call or stop by Thea's Home Bakery, opposite Dairy Mart, phone State 4-9003. Birthday, anniversary and wedding cakes made to order. c-4

FEMALE HELP WANTED
 Ladies to do pleasant survey work in Rowan, Carter and Bath counties. Starting pay \$1.25 hour plus car allowance. For interview write Box 126, Morehead, Ky. c-4

DOZER WORK
 Call Donald Forman, business phone State 4-4167 or residence State 4-4662. c-4

CABINET WORK
 Custom cabinets, woodworking, etc. Call The Chester English, 601 Suistown Street, Pittsburgh 12, Pennsylvania. c-4

Advertisement
 Sealed bids will be received by the City of Morehead and the Morehead Utility Plant Board of Morehead, Kentucky at the office of the Board, until 2:00 P.M. E.S.T., on January 21, 1964 for Contract No. 1 - Gas Distribution Main, Tolliver Addition, all according to plans and specifications which are on file at the office of the Morehead Utility Plant Board, and also at the office of the Chester Engineers, 601 Suistown Street, Pittsburgh 12, Pennsylvania.

Immediately after receipt of bids, they will be publicly opened and read aloud in the office of the Morehead Utility Plant Board. The successful bidder will be required to furnish satisfactory Performance, Labor and Material bonds in an amount equal to the contract price as required in the Contract Documents. Copy of the plans and specifications may be obtained by depositing Twenty Dollars (\$20.00) with the Morehead Utility Plant Board for each set of documents so obtained; the total of which will be refunded to the successful bidder and Ten Dollars (\$10.00) will be returned to all others who return plans and specifications in good condition within ten (10) days after the opening of the bids. The City of Morehead and the Morehead Utility Plant Board reserve the right to reject any and all bids and to waive any informalities in bidding. A certified check or bank draft payable to the Morehead Utility Plant Board, or a satisfactory bid bond executed by the bidder and a surety company in an amount equal to five per cent (5%) of the bid shall be submitted with each bid. No bid may be withdrawn for forty-five (45) days after same has been filed with the City of Morehead and the Morehead Utility Plant Board.

The territory lying adjacent and contiguous to the present east limits of said City and BEGINNING at the intersection of the present southeast corporate limits of said City and the Mouth of Triplet Creek at the intersection of Triplet Creek and Charity Creek; thence with the south bank of Triplet Creek and its meanders N. 10° E. 783 feet to point in south bank of Triplet Creek; thence with the east edge of Kentucky Highway No. 32 at south end of concrete bridge; thence with the east edge of Kentucky Highway No. 32 crossing the C&O Railroad N. 41° W. 1095 feet to the intersection of east edge of Highway No. 32 and south edge of Highway No. 60, intersection commonly known as Redburn; thence crossing Highway No. 60 N. 78° W. 47 feet to intersection of north edge of U.S. No. 60 and

EXECUTRIX'S NOTICE
 Notice is given that Miss Leola Quesberry has been appointed executrix of the estate of Asa R. Quesberry, deceased, and all persons having claims against said estate will please present same, duly proven, and all persons owing said estate will please settle same with the undersigned.
 Miss Leola Quesberry, Executrix,
 James E. Clay, Attorney for Estate Morehead, Ky. c-2

LEGAL NOTICE
 Fay Jones has applied for a permit to the office of Rowan County Court Ottis W. Eiam to operate a place of entertainment approximately 1/2 miles north of Morehead, Ky. on Highway 32, to be known as Highway 32 Drive-In. c-2

ONE BOTTLE TEAM
 WITH EVERY 5 YOU BUY!
 Just on the light side of lemon and lime

Notice To Bidders
 Office of the Forest Supervisor, Cumberland National Forest, Post Office Building, Winchester, Kentucky.
 Sealed bids, in single copy, will be received in this office until 10:00 a.m., E.S.T. January 20, 1964, and then publicly opened for the Forest Supervisor.
 Item 1. One (1) frame garage-storage building with a floor area of 2160 square feet, in accordance with plans and specifications set forth by the Forest Supervisor.
 Bidders are required to visit the building site, examine the plans, and fully inform themselves as to the size and location of the proposed buildings and all conditions affecting their construction before preparing their bids. There will be a showing of the building site on Friday, December 27, 1963, at 10:00 a.m., E.S.T. at the U.S. Forest Service District Ranger's Office in Stanton, Kentucky. Plans, specifications and bid information may be obtained from the Forest Supervisor, P. O. Box 56, Winchester, Kentucky. A limited supply of plans and specifications will be available at the showing. Bids must be prepared and submitted in accordance with and subject to the bidding conditions set forth in the Instructions to Bidders which are on file at the office of the Morehead Utility Plant Board, and also at the office of The Chester Engineers, 601 Suistown Street, Pittsburgh 12, Pennsylvania.

Immediately after receipt of bids, they will be publicly opened and read aloud in the office of the Morehead Utility Plant Board. The successful bidder will be required to furnish satisfactory Performance, Labor and Material bonds in an amount equal to the contract price as required in the Contract Documents. Copy of the plans and specifications may be obtained by depositing Twenty Dollars (\$20.00) with the Morehead Utility Plant Board for each set of documents so obtained; the total of which will be refunded to the successful bidder and Ten Dollars (\$10.00) will be returned to all others who return plans and specifications in good condition within ten (10) days after the opening of the bids. The City of Morehead and the Morehead Utility Plant Board reserve the right to reject any and all bids and to waive any informalities in bidding. A certified check or bank draft payable to the Morehead Utility Plant Board, or a satisfactory bid bond executed by the bidder and a surety company in an amount equal to five per cent (5%) of the bid shall be submitted with each bid. No bid may be withdrawn for forty-five (45) days after same has been filed with the City of Morehead and the Morehead Utility Plant Board.

Ordinance of Annexation
 WHEREAS, The Board of City Council of Morehead, Kentucky, having heretofore adopted an ordinance proposing to annex the following described territory, and WHEREAS, The Rowan Circuit Court, by Judgment of Annexation, entered on December 18, 1963, did authorize, direct and empower the adoption and passage of an ordinance annexing the following described territory to the City of Morehead, Kentucky, to-wit: BEGINNING at the intersection of the present southeast corporate limits of said City and the Mouth of Triplet Creek at the intersection of Triplet Creek and Charity Creek; thence with the south bank of Triplet Creek and its meanders N. 10° E. 783 feet to point in south bank of Triplet Creek; thence with the east edge of Kentucky Highway No. 32 at south end of concrete bridge; thence with the east edge of Kentucky Highway No. 32 crossing the C&O Railroad N. 41° W. 1095 feet to the intersection of east edge of Highway No. 32 and south edge of Highway No. 60, intersection commonly known as Redburn; thence crossing Highway No. 60 N. 78° W. 47 feet to intersection of north edge of U.S. No. 60 and

east edge of U.S. Forest Service Road No. 13; thence with east edge of U.S. Forest Service Road No. 13 N. 15° E. 371 feet to intersection of U.S. Forest Road No. 13 and the south line of U.S. Forest Road No. 238; thence with said property line N. 43° 15' E. 996 feet to a high point on ridge between Martin's Branch and Seeboughs Branch; thence with the ridge and its meanders N. 27° E. 5179 feet to N. 83° W. 1388 feet; south 74° W. 2330 feet to intersection with the existing U.S. Forest Road No. 238, limits of the City of Morehead, Kentucky.
 This Ordinance of Annexation shall be effective upon its passage and publication.
 Bidders are required to visit the building site, examine the plans, and fully inform themselves as to the size and location of the proposed buildings and all conditions affecting their construction before preparing their bids. There will be a showing of the building site on Friday, December 27, 1963. All interested bidders should assemble at 2:00 p.m., E.S.T. at the new U.S. Forest Service District Ranger's Office in Morehead, Kentucky. Plans, specifications, and bidding information may be obtained from the Forest Supervisor, P. O. Box 56, Winchester, Kentucky. A limited supply of plans and specifications will be available at the showing. Bids must be prepared and submitted in accordance with and subject to the bidding conditions set forth in the Instructions to Bidders which are on file at the office of the Morehead Utility Plant Board, and also at the office of The Chester Engineers, 601 Suistown Street, Pittsburgh 12, Pennsylvania.

Advertisement
 Sealed bids will be received by the City of Morehead and the Morehead Utility Plant Board of Morehead, Kentucky at the office of the Board, until 2:00 P.M. E.S.T., on January 21, 1964, for Contract No. 2 - Sanitary Sewer - Tolliver Addition, all according to plans and specifications which are on file at the office of the Morehead Utility Plant Board, and also at the office of The Chester Engineers, 601 Suistown Street, Pittsburgh 12, Pennsylvania.

YES, YES, YES!
 Yes, Virginia... Merry Christmas, Joyeux Noel, Felices Pascuas, Frohliche Weihnachten, Same Tan Ul Chook, Ha Hal Ni Da, Gaud Kristnako, Mele Kalkikimaka.

Every Mobile Home Reduced!
SAVE \$20000 - \$1,00000
If you buy before Jan. 1, 1964
 And as a bonus we pay the heating bills until April 1, 1964.
 — We Trade For Anything —
 6% INTEREST - UP TO 7 YEARS TO PAY
DOYLE MOBILE HOMES
 PHONE 945-6091 - FLEMINGSBURG, KY.

Watch This Newspaper
 For Full Details
On The Absolute Auction
Of The Lewis Riddle Farm
 (4 Miles North of Morehead On Ky. 32)
JANUARY 11
C. Roger Lewis
 Insuror - Realtor - Auctioneer

ABSOLUTE ACTION
SATURDAY, JANUARY 4, 1963
AT 2:00 P.M.

TOLLIVER ADDITION - MOREHEAD
 Close To MSC Athletic Field
 1 1/2 story, 8 rooms and bath, has living room, dining room, 3 bedrooms, 2 kitchens with cabinets, 1 large all-purpose room, plenty closets, gas floor furnace, completely insulated, aluminum siding, 1 car garage, workshop, cellar with storage room over top. Good lot 150'x245'

HOUSEHOLD ITEMS
 Clothes chest, 1 old oak chest of drawers, oak writing desk, 1 old oak dresser, oak dinette suit 5 pc., wall mirror, dressing table, and possibly some other lawn or household items we may decide to sell.
Charles & Edna Sturgill - Owners
 TERMS: 10% down day of sale, balance on delivery of deed.
ALPHA HUTCHINSON - REALTOR
 Morehead, Ky. 784-4196

STUCKY FUNERAL HOME
 PHONE 784-4106
Safety Belts Save Lives . . .
 . . . For your added protection we have installed safety belts in our ambulances

ONE BOTTLE TEAM
 WITH EVERY 5 YOU BUY!
 Just on the light side of lemon and lime

Merry Christmas



To all those we have known and happily served during the past year. It is with great pleasure we send these greetings.

Valley View Service Station



and best wishes for the New Year

IBM Office Furniture & Supplies

Greetings of the Season



May your Christmas be merry and long remembered! May your New Year be joyous and abound in happiness!

East Kentucky Printing Co.

WOMEN'S SOCIETY

NEW WOMAN'S CLUB HAS INSTALLATION

The College Younger Women's Club sponsored by Mrs. Adron Doran, held its Candlelight Installation Desert program Thursday evening in the Faculty Lounge of Doran Student House.

On hand for the affair were husbands and friends of the 22 charter members, state officers of the Kentucky Federation of Women's Clubs and members of the executive boards of the Morehead Woman's Club and the Rowan County Woman's Club.

Mrs. Adron, who is president of the KWFC, officiated at the installation ceremonies. The club charter was also presented.

MR. AND MRS. BAYLESS WELCOME DAUGHTER

Mr. and Mrs. Joe Bayless are welcoming a daughter born Dec. 16 at St. Claire Medical Center. She has been named Laura Jane.

EDSTON HOMEMAKERS HAVE CHRISTMAS PARTY

The Edston Homemakers Club met at the home of Mrs. Gypsy Parks for the annual Christmas dinner and party Tuesday. After the covered dish dinner a social hour was enjoyed and gifts were exchanged.

Those present were Mrs. Ina Cline Bimmon, Mrs. Gertie Bimmon, Mrs. Gayle Berry, Mrs. Mary Gosley, Mrs. Bobbi Godsey, Mrs. Lucy Farris, Mrs. Ruby Estcher, Mrs. Ethel Williams, Mrs. Nan Justice and two guests, Mrs. Estill Haman and Ruth Fortney.

The next meeting Jan. 21 will be at the home of Mrs. Mary Gosley.

Rev. and Mrs. Charles Brooks entertained the choir of Morehead Christian Church Wednesday evening at their home on Second Street. The home was decorated for Christmas and a social hour was enjoyed, with delicious refreshments served.

Guests of Mrs. C. E. Garey Friday were Miss Orlie Ogden and Miss Fayette Kidwell Ewing.

Sunday guests of Mr. and Mrs. W. T. Garey and Miss Nancy Caudill were Mr. and Mrs. Edward Kaser and family of South Bend, Ind., Mr. and Mrs. Edgar Reed and family, Mr. and Mrs. Robert Horne and family and Mr. and Mrs. James E. Garey, all sons of Lexington, Me., and Mrs. John Paul Messer and family of Ashland, Mr. and Mrs. John B. Messer and Mrs. C. E. Garey.

Weekend guests of Mr. and Mrs. Robert Fraley were Mr. and Mrs. Robert Douglas Fraley of Bloomington, Ind.

Mr. and Mrs. Norman Tant left Sunday for Nashville where they will spend Christmas with Mr. and Mrs. Edwin Hoback and family. They will also visit with her mother, Mrs. S. C. Rust in Decherd, Tenn.

Peter Coyle who attends Casper College in Casper, Wyo. arrived Monday to spend the holidays with his parents, Mr. and Mrs. Callis Coyle.

Mrs. Ira Caudill arrived Wednesday from Gainesville, Fla. to make her home here with her sister, Mrs. Ida Caldwell.

Mrs. Charles Apel will spend the Christmas holidays with her son, Mr. and Mrs. Francis Apel in Owensville.

Robert Gould is spending the holidays with his parents, in Memphis, Tenn.

Dr. Irwin R. Tucker is spending the Christmas holidays with his family in Bayonne, N. J. Mr. and Mrs. C. Z. Bruce and son, Zack left Friday for Cape Canaveral, Fla. to spend Christmas with their daughter, Mrs. Tom Hewlett, and Mr. Hewlett.

Mr. and Mrs. J. M. Clayton were in Portsmouth Thursday to meet their daughter, Laura Jane who is home for the Christmas holidays.

from Ohio State University.

Mr. and Mrs. A. B. Bowne and son, Tom left Christmas Day for St. Louis where they will visit for ten days with their daughter and sister, Mrs. Phil McBrayer, Mr. McBrayer and Kelly.

Mrs. Nan Ward and son, Jimmy left Friday to spend the holidays with her parents, Mr. and Mrs. T. W. Karkick in Mt. Sterling, Ala. on visiting there will be her sister, Miss Ann Karkick who teaches in Florida. They will go to Martin County Christmas Day to visit

Mr. and Mrs. London Ward: Mr. and Mrs. Roger Caudill attended the Gaylords Christmas dance at the Winchester Country Club Friday night. Eddie Ward and Mr. and Mrs. Don Ward are spending the holidays with their parents, Mr. and Mrs. London Ward in Tomahawk. George Martin Calvert of Atlanta visited his mother, Mrs. Callie Caudill Sunday and Monday. Rev. and Mrs. Charles Brooks left Monday for Bentleyville, Pa. where they will visit Mr. and Mrs. Clyde M. Watson Jr. and from there will go to Newark, Del. to spend Christmas with Mr. and Mrs. Curtis B. Brooks and family. They will be away ten days.

BUDGET CUTS

President Johnson's Federal budget will be pared to "the lowest possible level" but conceded the spending blueprint he sends Congress next month may reach a record \$100,000,000,000 or more. Kennedy had sliced the budget from requests submitted by Federal Agencies, Pierre Salinger, White House press secretary said, and "President Johnson is attempting to cut that budget further."



ENGAGED—Mr. and Mrs. Paul Carr of Indianapolis, Ind., announce the engagement of their daughter, Doris Kay, to Vernon Ray Cundiff, son of Mr. and Mrs. Arnold Cundiff, Clearfield. Mr. Cundiff is a graduate of Morehead State College. A July wedding is planned.



DRESSED FOR SNOW AND SANTA—Mrs. Jesse Shinson, Barbours Court, purchased a pair of shoes for daughter, Melania, 2½ years old. Store Manager Charles Chumley does the fitting. Melania indicated she preferred stores with toys.



PLEASANT PAUSE—Christmas shopping is a lighthearted affair. Christmas shopping is a lighthearted affair. Christmas shopping is a lighthearted affair.

GI'S LEAVE GERMANY The United States has brought home about 31,000 soldiers who were sent to strengthen the Army in West Germany during the Berlin crisis two years ago, it has been reported. The remaining 10,000 reinforcement probably will stay with the United States 7th Army for some time. This places the 7th Army's current strength at about 242,000 men.



St. Claire Hospital 784-4161

Admissions

Dec. 18 — Alfred Fawns, Owingsville; James Horton, Morehead; Laura Caudill, Clearfield; Toni Porter, Morehead; Helen Starcher, Millstone, W. Va. Dec. 19 — Mrs. Myrtle Butler, Morehead; Roberta Knipp, Soldier; Mrs. Juanita Johnson, Salt Lick; Mrs. Juanita Kidd, Clearfield; Irma Eldridge, Morehead; Linda Gilliam, Olive Hill. Dec. 20 — Ed McBrayer, Morehead; Mrs. Mozella Kidd, Morehead.

Dismissals

Dec. 18 — Mrs. Juanita Jessie and daughter, Jim Stampler; Tracey Porter, Dana Fultz, George Queenberry, Kenneth Rogers, Mary Helen Bland. Dec. 19 — Mrs. Alma Mauk and son, Laura Caudill, Annie Brown, Cora Stampler, James Horton. Dec. 20 — Mrs. Virginia Bayless and daughter, Tom Porter; Roberta Knipp, Charles Ferry. Births Dec. 19 — Mrs. and Mrs. Raymond Butler, son; Mr. and Mrs. Robert Kidd, son.

THE CHURCH OF CHRIST

MEETS AT 225 Second Street MOREHEAD, KENTUCKY

SUNDAY SCHOOL 10:00 A.M. SUNDAY WORSHIP 10:55 A.M. SUNDAY EVENINGS 4:30 P.M. WEDNESDAY EVENINGS 7:00 P.M.

DON FLATT, Minister

MERRY CHRISTMAS



Forget all your cares and worries...

this day is for fun!

Norge Laundry & Dry Cleaning Village



HOLIDAY CHEER

Our best wishes to you for a merry Christmas. May you have a delightful holiday season, and a new year filled with success and prosperity.

Wolford Insurance Agency



Merry Christmas. May you be together with all your loved ones to celebrate this most joyous holiday of the year. Wishing you health and happiness in this New Year.

Fraley Electric Co.

Seasons Greetings



May the full significance of Christmas, gladden your hearts and give you peace of mind and spirit.

Rowan County Extension Office

Adrian Razor — Ronald Hislop — Janet Boyd
Sylvia Gullett, Secretary



NICE GIFT FOR ALL THE FAMILY—Morehead stores generally reported that sales of appliances this Christmas are above expectations. David Reed, North Fork of Triplett, looks at a television set in a local store. Dealers reported little demand for color television sets in the Morehead area, and almost all sales were conventional black and white.

Philippines Place Yule Emphasis On Religion And Lavish Foods

Christmas Eve, for children in Manila, P. I., is a time for midnight Mass rather than for Santa Claus and Christmas stockings. The custom is for the children to wear only brand new clothes to this Mass.

Nine days before Christmas, children are aroused in early morning darkness to attend the Misa de Gallo, mass of the cock's crow. Emerging from church, they find vendors waiting with still warm cakes to eat on the way home.

Coming home from Christmas Eve Mass is again an occasion for eating—usually pastries, delicacies made of rice, and hot chocolate.

But although Santa Claus is generally not known, it doesn't mean children go without gifts. All through the Christmas season—which extends to Jan 6—children visit relatives and god-parents to collect presents. This is particularly true on Christmas Day, when everyone is either at home receiving guests or out visiting themselves. Each household prepares plenty of food for neighbors and relatives dropping in.

In many towns a program of entertainment is held in the plaza. In some areas pageants are held Christmas Eve, with a woman representing the Virgin Mary going from house to house in search of a place to stay.

Christmas decorations are concentrated in the churches and the homes. The favorite home decoration is a star-shaped lantern made of paper and lighted from within with bulbs. Christmas is also a time to go

home. It is a time for family reunions, a time when all relatives, rich or poor, gather together under one roof.

TOO LARGE

It is hoped the proposal that advertising space be sold on postage stamps will not be approved, as this would doubtless result in stamps being made larger than the licking surface of the average tongue.

take the WORRY out of moving!



BLAIR TRANSFER
Call AND STORAGE
PHONE STATE 4-5903

Completes Local and Long Distance Moving Service... Packing... Storage... Crating



613 W. Main Morehead, Ky.

Firestone

STOREWIDE PRE-INVENTORY CLEARANCE

DECEMBER 26, 27, 28, 30, 31

SAVE NOW ON TIRES

- *6.00-15 fits most Chevy IIs, Corvairs and Falcons
Nylon "500", Tubeless, Blackwall.....\$19.00
Nylon "500", Tubeless, Whitewall..... 22.00
De Luxe Champion, Tubeless, Blackwall..... 18.00
De Luxe Champion, Tubeless, Whitewall..... 21.00
Safety Champion, Tubeless, Blackwall..... 15.00
Safety Champion, Tubeless, Whitewall..... 18.00
- *8.00-15 fits most Buick Specials, Corvairs, Camaros, Ramblers, Olds F-85 and Valiants
Nylon "500", Tubeless, Blackwall.....\$21.00
Nylon "500", Tubeless, Whitewall..... 24.00
De Luxe Champion, Tubeless, Blackwall..... 19.00
De Luxe Champion, Tubeless, Whitewall..... 22.00
Safety Champion, Tubeless, Blackwall..... 16.00
Safety Champion, Tubeless, Whitewall..... 19.00
- *7.00-15 fits Chevy Chevelle, Dodge, Ford, Buick, Oldsmobile, Mercury, Plymouth, Pontiac and Studebaker
Nylon "500", Tubeless, Blackwall.....\$20.00
Nylon "500", Tubeless, Whitewall..... 23.00
De Luxe Champion, Tubeless, Blackwall..... 18.00
De Luxe Champion, Tubeless, Whitewall..... 21.00
Safety Champion, Tubeless, Blackwall..... 15.00
Safety Champion, Tubeless, Whitewall..... 18.00
- *7.00-14 fits Chevrolet, Dodge, Ford, Buick, Oldsmobile, Mercury, Plymouth, Pontiac and Studebaker
Nylon "500", Tubeless, Blackwall.....\$20.00
Nylon "500", Tubeless, Whitewall..... 23.00
De Luxe Champion, Tubeless, Blackwall..... 18.00
De Luxe Champion, Tubeless, Whitewall..... 21.00
Safety Champion, Tubeless, Blackwall..... 15.00
Safety Champion, Tubeless, Whitewall..... 18.00
- *7.00-15 fits DeSoto, Dodge, Edsel, Buick, Imperial, Mercury, Nash, Oldsmobile, Packard, Pontiac and Thunderbird
Nylon "500", Tubeless, Blackwall.....\$27.00
Nylon "500", Tubeless, Whitewall..... 30.00
De Luxe Champion, Tubeless, Blackwall..... 24.00
De Luxe Champion, Tubeless, Whitewall..... 27.00
Safety Champion, Tubeless, Blackwall..... 20.00
Safety Champion, Tubeless, Whitewall..... 23.00
- *8.00-14 fits DeSoto, Dodge, Edsel, Buick, Imperial, Mercury, Nash, Oldsmobile, Packard, Pontiac and Thunderbird
Nylon "500", Tubeless, Blackwall.....\$27.00
Nylon "500", Tubeless, Whitewall..... 30.00
De Luxe Champion, Tubeless, Blackwall..... 24.00
De Luxe Champion, Tubeless, Whitewall..... 27.00
Safety Champion, Tubeless, Blackwall..... 20.00
Safety Champion, Tubeless, Whitewall..... 23.00
- *8.00-15 fits most Buick Electra, Cadillac, Chrysler, Continental, Lincoln, Oldsmobile and Packard
Nylon "500", Tubeless, Blackwall.....\$32.00
Nylon "500", Tubeless, Whitewall..... 35.00
De Luxe Champion, Tubeless, Blackwall..... 29.00
De Luxe Champion, Tubeless, Whitewall..... 32.00
Safety Champion, Tubeless, Blackwall..... 25.00
Safety Champion, Tubeless, Whitewall..... 28.00



We don't want to inventory at Morehead Home & Auto and we do have to make room for spring merchandise now on the way — so . . .

EVERYTHING MUST GO AT CLEARANCE PRICES

Auto Supplies Santa's Second Choice

Firestone Permanent Anti-Freeze — \$1.69 gal.
2-pc. Car Mats — \$1.79 set
Wheel Covers — 25% off
Windshield De-Icer — 88¢
Foam Auto Cushions — 99¢
Color Stripe Wheel Covers 25% off

Wheel Goods
Deluxe 26" Bike \$44.44
Kiddie Cars — \$12.95
Sleds from \$5.49
ROLLER SKATES from \$1.19

Recreation Supplies
Basketballs — from \$3.29
Special Low Prices On All Shotguns & Rifles
All Fishing Equipment — 20% off
\$24.95 Complete Shopmate Jig Saw — \$18.88
\$24.95 3 3" Drill Set — \$18.88

TV And Appliances
First Class Trade-in TV's — from \$50.00
Portable Stereos — \$59.95 and up
Portable TV's — from \$149.95
Console TV's — from \$199.95
All Philco Refrigerators Reduced To Sell
Transistor Radios — from \$14.95

Morehead Home & Auto

Main at Hargis

Phone 784-4151



... and for the coming New Year we hope that you receive the blessings of health and prosperity.

Model Laundry & Dry Cleaners



Happy New Year too!

May Santa Claus be good to you this Christmas - and may the New Year bring you everything your heart desires.

Lane Funeral Home

NOEL



This is the happy time of year when we think of our friends; and so we think of you, and wish you the best and jolliest of holidays... a Merry Christmas and the very best of Happy New Years!

W. H. (Herb) Bradley
Circuit Court Clerk

WITH ALL BEST WISHES for Christmas AND THE NEW YEAR



Helen and Byron Wentz



Now, at this happiest season of the year, we want to wish you and your families all the joy and happiness possible...

Ottist W. Elam

Rowan County Court Clerk



MERRY CHRISTMAS

To you & your family & your friends here are our sincere wishes that Santa Claus will bring you everything your heart desires...

Dr. D. Day & Son

Don't Let A Fire Mar Your Happy Christmas Season

Christmas is the most wonderful season of the year. But this and New Year's is the headache part of the year for the insurance companies...

Added to this is the natural tendency of folks to celebrate and they are not as careful of their own welfare.

Last week we printed a warning from Morehead Fire Chief C. B. McCullough. It was timely, but we doubt if it helped.

Another caution - don't get on the highways unless you need to, although we do suggest you drive around Morehead to see the lovely home decorations.

On the night Marshall lost at Morehead, the annual dinner for members of Kentucky's...



May the glorious light of peace and love and joy shine upon you and those dear to you as you join together in the celebration of His birthday.

C. Roger Lewis Realtor - Insurer - Auctioneer

Our new Morehead News plant over the weekend and said: "You have the best operation in any town in the state...

NOT TOO LATE - The Morehead News office will be open Christmas Eve for gift subscriptions.

RATING THE NEWS - The major fire services and many leading metropolitan newspapers...

RATING LOCAL NEWS - Editor McCallough says he is swimming (from the files) the major (local) news happenings in Morehead...

TAX CONSCIOUS - Last issue we pointed out that Khrushchev and President Johnson and Gov. Rowan were agreed that a limit had been reached on spending and taxation.

PRINTED EARLY - The next issue of the Morehead News (like this one) will be printed early and you should have it by New Year's eve.

KNOWS THIS BUSINESS - Charles Blanchard, 51-year-old man most loved and respected man ever with Mergenthaler Linotype Company...

THE ANSWER - An advertiser (bless the advertiser) or publisher wouldn't be reading this newspaper unless he knew why we name our new newspaper offices "Fourth Estate Building."

WATCH YOURSELF - Note to any 60-plus grandparent: If your "grandchildren" believe you are a traditionalist...

PREDICTION - The time is right far off when Morehead will have a new, ultra-modern, 700 seat indoor theater in the heart of the business district.

THEY THINK OF THIS - Last issue we recited our 2 1/2 year old granddaughter's ultimatum that the chimney be cleaned to Santa Claus.

REMINDER - Have you remembered a present for your baggage men - there are four...

CERTAIN - A Morehead motel has started work on a swimming pool, to be opened next spring.

The Meaning Of Christmas - If it came to pass in those days, that there went out a decree from Caesar Augustus...

Then it was that the angel of the Lord appeared and said unto them: "Fear not; for I have good tidings of great joy, which shall be to all people."

Then, men ceased giving up their freedom for postage. A great many died, but others might walk upright in dignity.

Across the centuries it other would-be Caesars have advanced nations and societies which forgot the meaning of Christmas.

FIRST SPEECH - "Scientists are undecided as to when man first began to talk," says a scientist.

CHRISTMAS JOY



Look to the bright, shining star that symbolizes the light and hope of the world. May it strengthen the will for peace and the brotherhood of man.

Morehead Camp

May and Arch Williams



Along with the country's wishes you will be receiving on Christmas may we add our own. And we hope that good fortune will follow you all through the New Year ahead.

Exzell's Flowers



SEASON'S GREETINGS



Santa's loaded his sleigh with gifts for the good. We'd like to do the same if only we could! Instead we'll have to wish to each one of you Happiness, Peace and Joy the whole year through!

Triangle Food Market

Miamians Say Their Climate Is True One For The Observance Of Christmas Spirit

Shoppers in shorts making the rounds of air-conditioned stores, displayed northern dreariness, their laws in white sand to remind them of snow, and palm trees which produce red berries only tell the tale of Christmas in Miami.

"The holiday season is the time when the long-time 'native' and the recent 'native' go to war over merits of a semi-tropical Christmas."

"How can you get into the Christmas spirit when there's no snow on the ground, when the feature swimming suits and sun tan lotions, and when the word sounds better than hot chocolate?"

complaints the more recent native. "This is the true Christmas," replies the native whose blood has thinned through the years.

"There was no snow in Bethlehem or icicles hanging from the manger. And think of the money you're saving in heating bills and anti-freeze."

Nonetheless, many who long for a northern "white Christmas" find some consolation in making "frost" patterns on their windows with spray can decorating material.

Others smile amiably as they remember long-gone days of snow shovels, tire chains, dead batteries, gasoline, gloves and frustrated motorists. They find Christmas in the malodorous palm which produces a crop of acornized, bright red berries just in time for Christmas and the Florida holy tree, which is covered with thousands of small red berries each December.

Opening of the Christmas season signals a re-birth of commerce along southeast Florida's Gold Coast. The winter racing season opens with the horses at Tropical Park and there is also pari-mutuel betting at the dog tracks and jai-alai frontons.

Somptuous mansions scattered along Miami Beach and on islands in Key Biscayne are given a little extra sheen by maintenance staffs in preparation for the annual winter visits by their owners. High society springs to life with black tie banquets, charity balls, country club golf tournaments and ocean yacht racing.

The Florida sun also attracts Hollywood and New York entertainers and soon the list of names featured by Miami Beach hotels compares with the line of billboards along the Las Vegas strip on a summer night.

Sidewalks fill with shoppers—the couple who arrived on one of today's jet flights, uncomfortable in their heavy wool coats and casual Miami in capri pants or Bermuda shorts, long sandals and bright-colored shoes.

Mothers deposit their children at one of the many carnivals which take up winter residences in suburban shopping center parking lots.

At the end of the carnival is a town sky with its sparkling ferris wheel and other rides set up on the roof of a large department store.

Gift counters feature outdoor barbecue sets, golf clubs, swimming pool accessories, skin-diving equipment; and for the children, bicycles with trainer wheels, roller skates, a swimmer, croquet sets and tennis racquets. The Miami youngster doesn't seem to notice the absence of skis, sleds, toboggans and ice skates.

Little rainfall occurs during the Christmas season, so homeowners decorate their yards with paper-mache Christmas figures which are colored and lights reflect in swimming pools.

Many residents string lights through the fronts of their palm trees. Others buy traditional Christmas trees and erect them in sheltered corners of their patios, where colored lights reflect in swimming pools.

One Miami erects a Christmas tree on a raft floating in the lake bordering his home. He strings underwater power and sound effects for lights on the tree and speakers on the raft, then fills the area with recorded Christmas music.

Northern youngsters hold their Christmas caroling forays in horse-drawn sleighs, but what does the Miami youngster do? One group of Girl Scouts paddles through canals in the Coral Gables area in a flotilla of seven canoes, singing Yule songs.

meals of a semi-tropical Christmas. "How can you get into the Christmas spirit when there's no snow on the ground, when the feature swimming suits and sun tan lotions, and when the word sounds better than hot chocolate?"

complaints the more recent native. "This is the true Christmas," replies the native whose blood has thinned through the years.

"There was no snow in Bethlehem or icicles hanging from the manger. And think of the money you're saving in heating bills and anti-freeze."

Nonetheless, many who long for a northern "white Christmas" find some consolation in making "frost" patterns on their windows with spray can decorating material.

Others smile amiably as they remember long-gone days of snow shovels, tire chains, dead batteries, gasoline, gloves and frustrated motorists. They find Christmas in the malodorous palm which produces a crop of acornized, bright red berries just in time for Christmas and the Florida holy tree, which is covered with thousands of small red berries each December.

Opening of the Christmas season signals a re-birth of commerce along southeast Florida's Gold Coast. The winter racing season opens with the horses at Tropical Park and there is also pari-mutuel betting at the dog tracks and jai-alai frontons.

Somptuous mansions scattered along Miami Beach and on islands in Key Biscayne are given a little extra sheen by maintenance staffs in preparation for the annual winter visits by their owners. High society springs to life with black tie banquets, charity balls, country club golf tournaments and ocean yacht racing.

The Florida sun also attracts Hollywood and New York entertainers and soon the list of names featured by Miami Beach hotels compares with the line of billboards along the Las Vegas strip on a summer night.

Sidewalks fill with shoppers—the couple who arrived on one of today's jet flights, uncomfortable in their heavy wool coats and casual Miami in capri pants or Bermuda shorts, long sandals and bright-colored shoes.

Mothers deposit their children at one of the many carnivals which take up winter residences in suburban shopping center parking lots.

At the end of the carnival is a town sky with its sparkling ferris wheel and other rides set up on the roof of a large department store.

Gift counters feature outdoor barbecue sets, golf clubs, swimming pool accessories, skin-diving equipment; and for the children, bicycles with trainer wheels, roller skates, a swimmer, croquet sets and tennis racquets. The Miami youngster doesn't seem to notice the absence of skis, sleds, toboggans and ice skates.

Little rainfall occurs during the Christmas season, so homeowners decorate their yards with paper-mache Christmas figures which are colored and lights reflect in swimming pools.

Many residents string lights through the fronts of their palm trees. Others buy traditional Christmas trees and erect them in sheltered corners of their patios, where colored lights reflect in swimming pools.

One Miami erects a Christmas tree on a raft floating in the lake bordering his home. He strings underwater power and sound effects for lights on the tree and speakers on the raft, then fills the area with recorded Christmas music.

Northern youngsters hold their Christmas caroling forays in horse-drawn sleighs, but what does the Miami youngster do? One group of Girl Scouts paddles through canals in the Coral Gables area in a flotilla of seven canoes, singing Yule songs.



FOR SOMEBODY SPECIAL — Ward Bowman, and son, Carleis, examine a sweater in a Morehead department store as they try to decide on a present for 'mom'.



JOY TO ALL
May the spirit of Christmas come to you and your loved ones. May the blessings of peace shower the earth!

Juanita Wilson
Rowan County Tax Commissioner
Marvin Wilson Sr.
Deputy Tax Commissioner

Complete Ambulance Service
Oxygen Equipped
"Equipped To Serve You"
Member of Kentucky Funeral Director's Burial Association
Authorized To Service
Burial Insurance Contracts Issued by COMMONWEALTH LIFE INSURANCE CO.
LANE FUNERAL HOME
Phone 784-4134 Morehead, Ky.

Best Wishes
Our Christmas wouldn't be complete unless we'd availed ourselves of this opportunity to extend to you our sincere wishes for a truly merry Christmas and for a healthy, happy, prosperous New Year!

Grandmothers Avoid Stresses Of Yuletide In Most Unique Way
The obvious joys of having grandchildren around during the holidays are shared by all grandparents everywhere. But there are a few who strain too, when children and grandchildren pour in.

Best Wishes
Our Christmas wouldn't be complete unless we'd availed ourselves of this opportunity to extend to you our sincere wishes for a truly merry Christmas and for a healthy, happy, prosperous New Year!

TRADE IN YOUR CHAIN SAW FOR A MIGHTY NEW McCULLOCH
And do that cutting job faster and easier—Extra high allowances right now—Easy weekly terms—save money!

Mistletoe Will Stay Fresh For 18 Days
Kissin' cousins and other affectionate types needn't smooch up, wilted or moldy mistletoe this year.

Wreck Near—
The mishap was investigated by Trooper Jennings. A Department of Highways truck, operated by William Anderson, 39 Farmers, drove over an embankment and came to rest on its right side.

Auto Mishap—
Mrs. Ruby Lambert, Billy Templeman, Mrs. Tompkins, Mrs. Don Anderson and Karen and Lois Templeman, all of Morehead; Mrs. Ava Pool and Arthur Templeman Jr., of Crestline, O.; Mrs. Faye Grant, Dunellen, N.J.; and Curtis Templeman, Shelby, O.

GREETINGS
A Very Blessed and Happy Christmas
to all our friends in Morehead and Rowan County
Father Edward C. Haggerty
Father John E. Carrigan
and all the members of the Church of Jesus Our Savior.

Eagles Nest Restaurant
MONARCH SUPPLY STORE
MOREHEAD KENTUCKY

ONE BOTTLE FREE WITH EVERY 5 YOU BUY!
Just on the light side of lemon and lime
Don't be a Rip Van Winkle. Find WATCH REPAIR and JEWELERS fest in the YELLOW PAGES, where YOUR FINGERS DO THE WALKING

WE HAVE A COMPLETE LINE OF Infant Wear And Supplies
● Receiving Blankets ● Diapers ● Training Pants ● Palamas ● Topper Suits ● Regular Diapers \$1.25 Doz. ● Prefold Diapers \$3.75 Doz. — Everything For the Infant at the Lowest Prices in Town —
CRADLE SHOPPE
(Located in Bay-Turner TV & Radio Repair Shop)
WEST MAIN STREET MOREHEAD

WHOLESALE Remington Pump And Automatic Shotguns
MARTINDALE FURNITURE AND HARDWARE
MAIN STREET PHONE 784-4470

Merry Christmas
May the spirit of the first Christmas enter all our hearts now and throughout the coming year.
H. H. Lacy
Real Estate & Development Co.

The Morehead News

Morehead, Kentucky, Thursday Morning, December 26, 1963

25-Member Panel To Select Top News Stories Of 1963

What were the 10 top news stories in Rowan County during 1963? That question is being asked this week of a panel of 25 of Rowan County's citizens, and their evaluation of the year's events will be published as soon as the survey has been completed.

First asked at this time last year by The News, the question drew responses from 25 of the 25 who picked the St. Claire Medical Center story as number one for 1962, even though the hospital had not been completed.

This year's panel is made up of 25 persons, none of whom served last year.

The staff of The News has selected 27 happenings which it considers the top news in Rowan County for the year, and has submitted the list to the panel for evaluation.

Readers may want to clip this list and see how their ratings compare with the panel's.

Opening of St. Claire Medical Center and its staffing with specialists.
I rate this No. _____

Morehead Eagles tie for OVC basketball championship and subsequent loss to Tennessee Tech in playoff.
I rate this No. _____

Louie Niann carries Rowan County to 1st vote in general election, but Breathitt is elected.
I rate this No. _____

Continued growth of Morehead Tobacco Warehouse with sales of more than \$500,000 pounds before Christmas even though selling season is out a week short.
I rate this No. _____

Continued growth of Morehead, with some 15-20 new businesses opening.
I rate this No. _____

Reorganization of Peoples Bank, with H. H. Lacy and H. M. (Slick) Meadows gaining control and policy positions.
I rate this No. _____

Renovation of interior of Rowan County Courthouse.
I rate this No. _____

Curtis Casdill charged with rape of three-year-old daughter.
I rate this No. _____

Redistricting of legislative lines to include Morehead, Fleming and Robertson in this district.
I rate this No. _____

Continued planning and almost certain start on construction of \$20,000,000 Case Him Reservoir.
I rate this No. _____

Breakthrough Training School wins 10th Regional basketball meet and advances to State Tournament.
I rate this No. _____

Construction started on 80 units of Morehead's municipal housing project.
I rate this No. _____

City cracks down on "scowifiers," threatening warnings and arrest for habitual violators.
I rate this No. _____

Maxey Flat nuclear facility becomes operative.
I rate this No. _____

A. B. Chandler elected to Rowan County 21st vote in latest primary election.
I rate this No. _____

Prolonged drought strikes this section, but local water supply is ample.
I rate this No. _____

City of Morehead annexes Toliver Addition and area adjacent to Redburn.
I rate this No. _____

Unified Fund organized, conducts first fund-raising drive, which is not unqualified success.
I rate this No. _____

County runs out of money in its road fund and work is cancelled for two months.
I rate this No. _____

Redburn Park and other U. S. Forest service areas expanded to provide additional recreational facilities in the Cumberland Forest.
I rate this No. _____

Rowan County school accepts their first Negro student, with enrollment of third-grader at Morehead Elementary School.
I rate this No. _____

Rowan County fair is cancelled because of lack of support from rank and file.
I rate this No. _____

Will of late Maxine Meadows disputed; Lexington attorney charged with concealing true will; grand jury finds no basis for charge.
I rate this No. _____

Morehead State College's growth continues unabated; enrollment hits record high; construction continues unchecked.
I rate this No. _____

Morehead State College holds Founders Day on its 40th anniversary with Gov. Combs as principal speaker. Buildings named for Combs, Harry Lee Waterfield and members of the Board of Regents. Program cut short by news of assassination of President Kennedy.
I rate this No. _____

Rowan County voters use machines for the first time in 107-year history, in primary election.
I rate this No. _____

City faces possibility of building own water plant or paying increased rate to Morehead State College as expansion of college facility becomes necessary if it is to continue to furnish water to the city.
I rate this No. _____

Common Sense, Laws Will Cut Down Tragedies

State Safety Commissioner Glenn Lovern called on Kentucky motorists today to "co-operate with driving laws and regulations to keep Kentucky's traffic death toll from soaring to a record high."

The worst traffic death toll on record in the Commonwealth was in 1953 and in 1952. In each of those years there were 662 traffic deaths.

Emphasizing that State Police will again be using radar and unmarked cars, Commissioner Lovern said all possible State Troopers will be on duty for the Christmas holidays. He said 12 persons might lose their lives during the holiday period. Last year 11 were killed.

"With Christmas less than a week away," Lovern said, "it is wise to prepare for your trip now."



GUESS WHAT HE WANTS FOR CHRISTMAS? — Mark Plank, 4, tries out a beginner's bike at a Morehead store and was emphatic about being old enough to ride it. His mother, Mrs. Debbie Plank, RFD 3, holds two-year-old Jeffrey. Expressions like this could be observed at every Morehead shopping place, emphasizing that Christmas, after all, is for children... that is, children of all ages, including grandpas.

Christmas Carols Are Offspring Of Folk Dancing In Middle Ages

Today's Christmas carol is a domesticated descendant of a lively folk dance.

The carol adapted into the Middle Ages as a circular country dance, called a "carole" in French, according to World Book Encyclopedia. Some of the early Christians looked askance at dancing, however, and the carol soon lost its steps.

The lyrics of the songs that had accompanied the dance began to change, too, and eventually the "macaronic" style appeared. This consisted of tacking a Latin phrase on to the popular lines, so that the people sang:

Make we joy now in this feast
In qua Christus natus est

They didn't necessarily understand the Latin, although it carried on the sense of the song, but the stately Latin words gave them a religious image.

In 1223 St. Francis of Assisi started the custom of placing a crèche, or miniature Nativity scene, in the church at Christmas time. People began to act out the events of the Nativity — one of the steps in the development of the early plays — and then to compose carols to sing with the plays. These led to the French carols, strictly Christmas songs, which, in turn, inspired the English carol.

Carols, both secular and religious, flourished in England until the Puritans substituted their more spiritual hymns. These carols were:

ISN'T WORTH IT

"In both the animal and plant worlds, living under adverse conditions makes for harder and longer life." — Science note. This is at least particularly true of human beings in one respect, in that married men outlive single ones.

ABC Predicts Tax Raise For Kentucky

Former Governor A. B. Chandler predicted Thursday that many of the State's existing taxes will be increased in an attempt to solve "the worst financial crisis in our history."

He said in an interview that Governor Edward T. Breathitt's Administration is "in a hopeless position. They've got to do something drastic because they've been covering up our true financial picture."

Chandler said he would not put any new taxes on the people," Chandler added. "But he very carefully stayed away from the question of present levies."

(Breathitt—old newspaper Tuesday that he still stands on his campaign promise not to raise taxes. But high officials in the Administration were still talking about the possibility that some raises would be needed.)

Chandler, whom Breathitt defeated last May in the gubernatorial primary, also said a move will be made to get the public to approve a \$50,000,000-or-more bond issue to take care of the

frivolous situation in our road department.

"We're now paying a heavy carrying charge on our tollroad bonds. Take the Mountain Parkway, for example. It's a nice road but nobody has said it can pay for itself," he said.

Chandler said part of the blame rests with former Governor Bert Combs. "This man went on one of the wildest spending sprees in the Commonwealth's history," Chandler added. "He forgot that payday comes around sometime and now the new Administration is looking around to find out who is going to pay."

Chandler said he doubted whether Breathitt would be able to fulfill another campaign promise: to find 75,000 new jobs for Kentuckians.

"No new industries are coming to a state on the verge of financial bankruptcy and high taxes," Chandler said. "They've handed this problem to Lieutenant Governor Harry Lee Waterfield and he'll find it right difficult."

Chandler also said he doesn't envy the new revenue commissioner, James Luckett. "He can't hit rock and produce money like Moses did water," Chandler said.

Loyola Tops National Scoring Race; Eagles Hold Down Third

When Morehead State College's Eagles hang into Loyola in Chicago a week from Saturday the NSC will be meeting a team that is:

rated number 1 on the country;

the defending National Collegiate Athletic Association champion;

the top team in the country on offense;

There's not much the Eagles can do about Loyola's first two accomplishments—they're in the past.

However, Morehead doesn't need to tremble in its boots over the Ramblers' scoring, because the Eagles themselves are only two notches down the list in scoring.

Figures released this week by the NCAA Statistical Bureau, show Loyola first in offensive average with 104.4 points per game. Michigan State second with a mark of 99.2 and Morehead third at 92.3. The Morehead average, based on four contests, is almost five points ahead of fourth place Detroit, which has tallied 85.4 per game.

Actually, Morehead's average at this point is an even 100 points a game. The NCAA statistics were compiled as of Dec. 14, but Morehead tallied 100 points Tuesday night in defeating Marshall University, raising the average to the century mark.

In addition to the third place team average, Morehead's Harold Sergeant is in the top 10 in individual scoring. His average is 30.8 per game, good for ninth place in the national standings.

Leader in the individual scoring race is Howard Komives of Bowling Green (6.) with 35.5 points per game in four games.

SUMMIT TALK POSSIBLE

There is a possibility that a Western summit meeting will take place in the early part of 1964. President Johnson has displayed a liking for personal diplomacy for talks with French President de Gaulle, British Prime Minister Douglas-Home and West German Chancellor Erhard next year.

NEWS PAPERS FOR CUTTING BELONGING TO PUBLIC LIBRARIES

May your Christmas be merry and joyful... and your New Year filled with prosperity and real happiness.

Morehead Plumbing & Electric Company

Seasons Greetings

Many Happy Returns of the Day!

Christmas would not be complete for us if we failed to extend our sincerest best wishes to our many friends and customers!

Glenn W. Lane Insurance Agency

MERRY Christmas

May the year ahead be filled with joy and good will for you and yours and all mankind.

Curt Lewis
Rowan County Sheriff

ONE BOTTLE TEEM FREE WITH EVERY 5 YOU BUY!

Just on the light side of lemon and lime

NOEL

May the star in the East guide you to a Christmas season of peace and serenity, and may the year ahead be filled with joy and good will for you and yours and all mankind.

The Morehead News
Management and Staff

GREETINGS



WE HOPE THIS CHRISTMAS WILL BE ESPECIALLY PLEASANT FOR YOU, YOUR FAMILY AND FRIENDS.

Carr Lumber Company



BETCHA SHE HAS A BOY FRIEND — Pretty Carol Wenz is getting her hair done for Christmas. The attractive beauty operator is Karen Mauk. Many think Christmas is only for children, but a suspicion exists that girls like this may have visions of sugar plums — and boys.

Safety Tips Help Make Happy Yule

Your holiday buying may endanger your family's health if you fail to keep safety in mind. Here are a few tips on holiday safety issued by the Rowan County Health Department.

✓ Be sure the Christmas tree you buy is fresh. A dry tree invites fire. E. E. Grebe, county sanitarian, advises you keep the tree outside until it's used. Then make a fresh saw cut across the base so the tree can absorb water.

✓ Place the tree securely in a steady holder containing water.

✓ Find a cool place away from any heater, TV, or curtains.

✓ Make sure that the tree won't block an entrance or exit if it should topple.

✓ Test your electric tree lights (never use lighted candles) before using.

✓ Don't let the light bulbs touch any greenery. Intense heat could cause a blaze.

✓ Trim the tree with materials that won't burn. Avoid cotton, paper or other flammable materials.

✓ Don't let metal foil icicles or tinsel touch a light socket or electrical cord.

✓ If you have a metal tree, it is dangerous to use electric lights as trim. Faulty wiring could electrocute anyone touching the tree. Instead use colored revolving spotlights, above, below or to one side of the tree.

✓ Curious children often find unexpected—and dangerous—uses for what parents supposed to be a "harmless" toy. Mary C. Mincer, nurse, warns parents to "think a step ahead" of their children this Christmas.

Before buying, parents should

ask themselves: How easy is this toy to take apart and swallow? Is this toy safe for children playing without a parent nearby? Will it catch fire easily? Are there sharp edges on the toy?

Parents with children under five are especially cautioned against buying toys covered with paint containing lead. Be sure the toy is labeled: "Conforms to American Standard Z86.1-1935 for use on surfaces which might be chewed."

Alien Registration Must Be Completed During January

Thomas M. Pederson, District Director of the United States Immigration and Naturalization Service today reminded that the period within which aliens must report their addresses is almost at hand.

The month of January has been set for the address reporting period. All aliens in the United States with few exceptions, must report their addresses to the Government during that period. Pederson said that forms with which to make the report will be available to all post offices and offices of the Immigration and Naturalization Service during January.

GROUND HOG DAY
So far this year Congress has hibernated, estivated and gone back into hibernation, but indications are that President Johnson will have aroused it from its winter sleep.



MERRY CHRISTMAS

At this season of the year it is our sincere wish that happiness and prosperity find their way into the homes of all our friends, and remain with them throughout the year.

Caudill Brothers Tire Service

Tommy Caudill

MERRY CHRISTMAS



Spring Grove Dairy

YULETIDE GREETINGS



We take this opportunity to thank our friends and customers... May joy be theirs at all times
Union Grocery Company



Merry Christmas

We offer our very best wishes for a merry Christmas and a very happy New Year, rich in contentment and pleasure...

Greer Lumber Company



Merry Christmas

SANTA has just about delivered the last gift; his work is almost done. If we have helped him by having the things you wanted, we shall be very happy. We hope and trust that your Christmas will be the happiest one you have ever known. Our best wishes!

Rowan Farmers Supply



SOME SAY MEN ARE POOR SHOPPERS — Mrs. Sherman Murphy may have a sweater among her many Christmas gifts judging from the expression of her husband in a Morehead store.

PEPSI-COLA COMPANY BRINGS YOU
the sugar-free cola with
rewarding true-cola taste!

PATIO[®]

DIET COLA

FIGURE EXPERT
DEBBIE DRAKE says:
"GREAT TO
YOUR WAIST!"



"THE REFRESHING
WAY TO STAY SLIM!"



"SUGAR-FREE—
ONLY 1 CALORIE
PER SERVING!"



"REWARDING
TRUE COLA TASTE!"



"Now you can satisfy that natural yearning for refreshment and still stay slim. New Patio Diet Cola contains only one calorie per serving. It's absolutely sugar-free, yet it tastes delicious. Gives you true-cola taste because it's made with true-cola ingredients by Pepsi-Cola Company. Try it today. It's the refreshing way to stay slim. Patio Diet Cola... in economical Half-Quarts."



**PATIO
DIET COLA**

A MERRY CHRISTMAS

for All!



We want to wish each and every
one of you a glorious Holiday!
May the spirit of brotherly
love bring peace to all mankind!

Alpha M. Hutchinson Co.



GREETINGS AND BEST WISHES

Chester Kiser Construction Co.



JOY TO ALL

MAY the true spirit of Christmas fill your home at this festive season ... and may its many benefits linger on throughout the year. This is our hope. May a new prosperity and happiness be yours throughout the coming year. This is our prayer. So we join with everyone in an expectant unity that all this may be true.

Layne's Stores



READING THE YULE VERSES — Trade journals indicate that sending of Christmas cards may be declining, probably because this runs into many dollars considering the cards have increased in price, as has the postage. Sisters Janet Crowe and Alonda Crowe, West Morehead, make their selection of cards at a Morehead store, while their little cousin, Mallie Ann Wells, particularly likes the ones picturing Santa.

'63 Burley Crop Is Estimated At 5 Percent Above Forecast

Production of burley tobacco, type 31, in Kentucky is estimated at a record 481,600,000 pounds by the Kentucky Crop and Livestock Reporting Service. This is six percent above last year's previous record production of 458,720,000 pounds, 47 percent greater than the 1957-61 average production, and five percent above the Nov. 1 forecast. Production in the entire burley belt (Kentucky and seven nearby States) is placed at 709,965,000 pounds — five percent more than in 1962 and 41 percent above the five-year average production.

Kentucky's burley yield is expected to average 2150 pounds per acre — a new record high. This exceeds the five-year average yield by 207 pounds and the previous record high established in 1962 by 120 pounds. Although leaves looked thinner and lighter than normal, most crops cured out much heavier than anticipated due to a greater number of larger leaves. Beltwide, an average yield of 2097 pounds per acre is estimated. Harvested acreage of burley in Kentucky is estimated at 224,000 acres — the same as last year but 11 percent above average.

Gross sales of burley in Kentucky through Dec. 13 totaled 306 million pounds compared with 298 million pounds during the first 14 days of sales in 1962. Markets closed one week early for Christmas this year to allow handling and re-drying facilities of the Burley Tobacco Growers Association to catch up with receipts. Sales before Christmas last year totaled 347 million pounds but receipts by the crop have been about five times greater than a year ago.

Dry weather during October delayed stripping operations but light rains in early November and mechanical means of bring-

Dr. Roy Elrod, Is Claimed In Indiana Tuesday

Dr. Roy Elrod, a prominent North Vernon, Ind., veterinarian, died early Tuesday in a Columbus, Ind., hospital.

He was the father of Mrs. Boone (Jane) Caudill, and the husband of the former Edith Miller of Morehead.

Dr. Elrod had retired from the practice of veterinary medicine in 1967. From 1947 to 1960 he was Indiana State Veterinarian and at the time of his death was serving as an area veterinarian.

A member of the Episcopal Church, he was also a member of the Masonic Lodge, Scottish Rite and Shrine.

He graduated from the Indiana School of Veterinary Medicine. Funeral services were held Thursday in North Vernon. Burial was in Vernon Cemetery.

Other survivors include a son, John Elrod, Los Angeles, Calif.; another daughter, Mrs. Polly Purkiser, Glenwood, Iowa and a brother, Gale Elrod, Martinsburg, Ind.



With best wishes to you and your friends

Morehead Tobacco Warehouse, Inc.

A Joyous Yuletide



We would like to extend at this time our best wishes to you and your loved ones. May your Holiday be a merry one and filled with goodwill!



PLENTY OF ROOM — QUICK SALES — TOP MARKET

Stone Pontiac-Buick-GMC, Inc.
Your Authorized Pontiac-Buick-GMC Dealer

Ramblin' Through Willis

An \$18 Cake Is Not As Big As The Money Might Seem

By Glenn Hollen
Mr. and Mrs. George Stamper, Vada, have been hooked up for fifty years. They had them a party out to their daughter's, Edna Abner, house to celebrate their 50th wedding anniversary. All the in-laws and things come to the party and everybody had them a good time eating that big \$18.00 cake and drinking that punch and eating a lot of other good grub-stuff.

Corsey Gabbard is a son-in-law and him were a talking about this wedding anniversary and especially were a talking about the \$18.00 cake what was ordered for the party. We both guessed it would be as big as a pie on a truck bed, or at least, a lot bigger than a ordinary washub. We figured how we could bake a awful big cake for \$18.00 if'n we had the 18 dollars for to bake a cake with. We figured how we could mix up a 25 pound poke of that self-com-uppance flour with a poke or so of sugar and some manilla flavor and the kernels from a bushel of warmuts and a lot of other stuff what a feller can find around in the kitchen and we could bake the awfulest cake ever and nearly if we could find a stove big enough to cook it in. We figured we would just have to cook it out in the open.

While we was discussing this big university cake, Ernest Webb drove up with it in one of them Kern's Bakery Trucks. He had in it one of them big empty tissue paper boxes and he come carrying it in the store like it weren't nothing hardly. He set the box down on the counter.

"Did you fetch that there cake?" Corsey asked.

"It's in that box there," Webb answered.

"His stucks feller, that box wouldn't hold no \$8 dollar cake."

"Corsey said right back.

"We both jumped up and we took a peep into the big emptied tissue box and there enough there was that cake. It was a big bigger than a big washpan at the bottom and it tappered off as several more layers of cake had been added on.

That cake was covered with the purtiest looking thing you ever did see and it had blistoms all over it and it had a man and a woman standing on top of it with big silver bell over them. That there was a purty cake and if'n nobody hadn't been a looking me and Corsey both would have tuckered on off a little bunk of that wedding anniversary cake.

We both decided it weren't much of a big cake for \$18 didn't look like but then we figured how it was the fancy trigger work what had made the cake cost so much. I didn't get to go to the party but Corsey went right out there and he drunk punch out of a punch bowl and eat on that big cake. He told us he never in his life ever did hear of no punch nor punch bowl before. But he really did go for that punch. Then he told us after the party and everybody had such a good time, "if me and the woman ever do tolerate each other for fifty years, I aim to have me one of them wedding anniversaries and I aim to have me a \$18 cake baked and get me a punch bowl and fill it plumb full of that good fruit punch and have me the best time ever was."

A. R. Hicks, Covington, sent us a package of that wheat grass seed for to plant and raise some wheat grass for to harvest the seed. There was a list of directions for sprouting these seeds and making a delicious mess of food out of 'em. There were also directions of making wheat grass manna which is one of the finest natural health giving mixtures we have ever read about. It appears that that wheat grass manna would really cut down on a feller's doctor bills if he didn't have to sow them seeds in a box this winter and grow us some wheat grass sprouts for to eat and make us some of that manna for our health.

We appreciate the kindness of Mr. Hicks for letting us in on sprout eating and sprout growing. It will be a cheap way of living we could live a bit better if we had the money spent for investigations of our lowly conditions and the money spent paying these government fellers to study us and the money wasted getting a Fore Man's Program started. All we will get out of it is a few extra cans of Commodities and a few Mission Hall garments and a bottle of Cod Liver Oil. If they's any money in the Program, them fellers whover don't need it will get it. We know how these government programs work. Us pore would certainly be thinned put if we depended too much on them government programs.

GOP ON RIGHTS BILL
Most Republicans oppose the

Most Republicans oppose the bill by House leaders to resort to a petition in an effort to get the civil rights bill out of the Rules Committee. The idea of bypassing committees by getting a majority of the House members to sign a petition move the civil rights bill to the floor is having little sympathy with most Republican members.

December Birthdays?
Is this your license?
EXPIRES 1963
BIRTH MONTH
Published as a public service by the newspaper.

Henry ain't going to starve to death none this winter. He is filling his deep freezer with good stuff to eat. He is paying Wiley Peltry and Gailber Peltry fifty cents a piece for 45 groundhogs what he aims to put into his deep-freeze. Wiley and Gailber 'bout got the groundhogs ketchered.

We got some more of them stamps what the United States Postal Hobbyist puts out. One showed a man carrying a umbrella which we look to be the lack of knowledge of man. It meant he ain't got sense enough any more to get in out of the rain.

The lother stamp showed a picture of Mrs. Eleanor Roosevelt. We know about her. She was a Democrat. And her youngun, Junior, is down in here among us pore of

Rowan Students At UK Selected For Info Unit

Two Rowan County students, Edna Jane Caudill and Martha Jane Wilson, have been named to the University of Kentucky Committee 249, an information organization made up of students from each of Kentucky's 120 counties. Students selected for the Committee represent the University in their home communities. Their main assignment is to visit the high schools in their respective counties, presenting information on the University and answering questions of students.

Committee members are chosen on the basis of their academic and leadership abilities, and demonstrated interest in serving the University. Miss Caudill, daughter of Mr. and Mrs. Boone P. Caudill, is a junior education major at the University of Kentucky.

Miss Wilson, daughter of Mr. and Mrs. R. L. Wilson, is a sophomore at the University, studying in the College of Arts and Sciences.

Both were graduated from Breckinridge High School.

Eastern Kentucky a studying the pitiful conditions of us and a recommending more commodities and Cod Liver oil for us. It is a sight how impressed he has been and he has been a telling Mr. President in Washington and Mr. Combs in Frankfort about how we ain't likely to survive the coming winter unless something is done for us immediately. Especially we ain't likely to make it if'n it is a cold winter like last year. We guess it is the sinners hopes of everyone nearly that we live until the next election anyway.

They ain't no use of them big government fellers a worrying none too much. Us pore will be right here upon this earth whenever it stop spinning. We guess we could live a bit better if we had the money spent for investigations of our lowly conditions and the money spent paying these government fellers to study us and the money wasted getting a Fore Man's Program started. All we will get out of it is a few extra cans of Commodities and a few Mission Hall garments and a bottle of Cod Liver Oil. If they's any money in the Program, them fellers whover don't need it will get it. We know how these government programs work. Us pore would certainly be thinned put if we depended too much on them government programs.

UP HIGH—Kentucky 4-H Club members looked over Chicago from the roof of the hotel which was their headquarters at National 4-H Club Congress. They are: (left to right) Gay Lester, Mercer



On Chicago's Skyline
UP HIGH—Kentucky 4-H Club members looked over Chicago from the roof of the hotel which was their headquarters at National 4-H Club Congress. They are: (left to right) Gay Lester, Mercer County; Jim Allen, Fayette County; "Cherry" Porter, Rowan County; and Martha Overly, Boone County. Thirty-three Kentucky 4-H'ers attended the national event.

MERRY CHRISTMAS
May this Christmas be the merriest for you and yours and may the New Year bring you everything your heart desires.
White Lumber Company
Eugene F. White

GREETINGS
The trumpeting in of the holiday season usually means a time of parties, family gatherings and general rejoicing. But people usually take time from their gala doings to give thanks for their blessings. At this time we would like to wish you and yours the best for the coming year.
Ray L. White & Sons Lumber Company

SHOPPING FOR HER MAN — Mrs. Ollie Barker looks over the selection of ties at a Morehead store. Sales were heavy on four-inch ties already tied that clip to a man's shirt. This type of tie was not available last Christmas.

WE WISH YOU A Merry Christmas and a New Year filled with all good things!
PEOPLES BANK OF MOREHEAD

THESE TRUTHS WE MUST HOLD



IS LOVE OF FAMILY, FRIENDS AND GOD "OLD FASHIONED"?

Americans believe: That in our way of life there are many things, many blessings that have no base in materialism — love of home, love of family, patriotism, loyalty to friends and devotion to God. These are all integral parts of American heritage and give satisfaction and happiness, which the Communists cannot begin to understand.
Communists believe: That everything is material — if you can't see it, it doesn't exist. The government must teach the people that love of home, and family, and loyalty to friends are secondary to anything which furthers the progress of Communism. The people must discard God. Materialism is the "be all" and "end all" of Communist endeavor.

ETERNAL VIGILANCE IS THE PRICE OF LIBERTY
To renew and quicken interest in our precious heritage of Freedom, and its superiority over the Communist philosophy, these messages are being published by Kentucky Utilities Company, an investor-owned electric company.
KU SYMBOL OF SERVICE
KENTUCKY UTILITIES COMPANY
an investor-owned electric company

GOOD EATING — Attractive Mrs. Larry Hardin holds the Christmas turkey she selected for the Christmas table. Morehead food stores reported their biggest volume in history. One manager said it was surprising how many folks from other counties came to Morehead to purchase food in his store, turkey was cheaper than during the depression because of mass production.

CHRISTMAS JOY



May You Know
JOY, HEALTH
and HAPPINESS

Style Shoppe



STORES OFFERED WIDE GIFT SELECTIONS - These ladies said it was difficult to choose gifts this year because Morehead retail stores offered such varied selections. From left: Gerolene White, Clearfield; Mrs. Billy Joe Hardin, RFD 4; and Mrs. Nettie Myrshier, RFD 4. Uncertainty of the holiday market probably cut Christmas sales volume throughout Kentucky.

Save Labels, Tags From Yule Gifts

When you open your Christmas gifts, be sure to save any hang tags or labels on gifts of clothing or textiles, suggests Dorothy Threlkeld, University of Kentucky Extension clothing specialist. You'll need these tags for information on care, or should the gift not fit, or if you have the hang tag or label. Leaving the tags or labels on when you wrap the gifts of clothing or textiles is not only good taste but also the thoughtful thing to do, Miss Threlkeld points out. When you do that last-minute gift wrapping, remember that leaving the hang tag or label on clothing and textiles will be a big help to the person receiving the gift.

Several years ago, you could tell by look or feel just what a fabric was - and how to care for it. This is no longer true. Often, the only clue to fiber content and care needed is the information on the hang tag or label. By law, all articles of clothing and textile items must be labeled with the fiber content. Many manufacturers also include directions on care. Following these instructions carefully is the way to get best results with these fabrics. If you've selected clothing or textiles as gifts, you'll want the persons who receive them to be pleased with your selections long after the holiday season is over. If your gifts give good value, they probably will be long appreciated and give the person their purpose best if the owners know how to give them the proper care.

For this reason, leave the hang tag with the gifts you wrap. And, if you receive such gifts yourself, save the hang tags so you can refer to them later should care needed, Miss Threlkeld concludes.



HEARTY
WISHES
FOR
HEALTH
AND
HAPPINESS

We give you wishes
warm enough to last
through the holiday
season and through
the coming year!

The Citizens Bank

MERRY CHRISTMAS



And a Happy
New Year too!

Clayton's Mens Shop



GLAD TIDINGS

To our faithful old friends and our
cherished new ones, we extend sin-
cere Christmas greetings and good
wishes for the coming year.

Burns Department Store

Hopkinsville Woman's Idea Brings Old Carol Up To Date

There's a new pear tree that tells an old Christmas story in the home of the Aden Higgins at Hopkinsville, Ky. The tree, made of posterboard and covered with felt, spells out the old English carol, "A Partridge in a Pear Tree." It was designed and made by Mrs. Higgins. There are 12 bands, like lidless round boxes, which make up the "tree." They are of graduated sizes, the largest is 20 inches in diameter and the smallest is 6 inches across. Attached to the felt are figures celebrating the 12 days of Christmas. They are decorated in bright gold and silver beads, sequins, beads, costume pearls, and jewels.

Since the boxes are hollow, they fit one inside another for easy storage between Christmas seasons. "A Partridge in a Pear Tree" is a carol of great antiquity. According to the Ben Shahn edition of the song, published by the Museum of Modern Art, "the partridge in church symbolism indicates abandonment of faith. The pear tree possibly refers to a one-time Christmas custom wherein a young girl, upon locking into a pear tree possibly refers to a one-time, was to be rewarded by seeing the image of her true love."

The song lists a series of gifts "my true love gave to me" until "On the 12th day of Christmas my true love gave to me 12 ladies dancing, 11 lords a-leaping; 10 drummers drumming, nine pipers piping, eight maids a-milking, seven swans swimming, six geese a-laying, five golden rings, four colts coursing, three French hens, two turtle doves and a partridge in a pear tree."

Forest Service Sets Construction Work

The U.S. Forest Service today announced it will accept bids within the next month for construction of two buildings at its Robbins Hollow headquarters. Quotations will be opened Jan. 26 for construction of a frame garage-workshop building. Bids will be opened Jan. 24 for building of a storage-garage structure. Each will contain 2,160 square feet, according to the specifications set out by the Forest Service's call for bids. A showing of the building sites will be held Dec. 27.

'Pee Wee' Quint Takes 1st Place In Cage League

The Jaycee "Pee Wees" took over sole possession of the lead in the Rowan County Recreation Basketball League Thursday, with a three-overtime 65-64 win over Clearfield. Their record is 6-1.

Next in line are the Jaycee "Big Boys", who sport a 5-2 mark. Clearfield's slate is 4-2, while Norge Village, Ferguson Brothers and Elliottville are tied at 2-2. Thursday night's play saw Ronald Hart lead the "Pee Wees" to first place with 28 points. Denny Burdon has 17. For the losers, Warren Cooper tallied 17. Elliottville knocked off the "Big Boys" 32-32. The winners had four men in double figures, headed by Brooks Dickerson with 14. The "Big Boys" were paced by Jina White's 8. Norge Village fell before Ferguson Brothers, 35-24. Dorsey Hartlin had 14 points for Norge, while Jack Carter took game honors with 16 for Ferguson Brothers.

Leaf Quota Discussion Is Slated

1964 Leaf Quotas To Be Discussed - Burley and Dark tobacco quotas for 1964 will be discussed Jan. 14 and 15, at the Phoenix Hotel in Lexington, according to an announcement made by R. O. Wilson, chairman of the Kentucky State ABC Committee. The meeting Jan. 14 will begin at 1:30 p.m. in the Henry Clay Room and will be devoted entirely to dark air-cured and dark fire-cured quotas for 1964. The meeting Jan. 15, beginning at 1:30 p.m. in the ballroom will be devoted entirely to the 1964 burley quota.

United States Department of Agriculture officials will present data showing the supply and demand situation as well as figures on production consumption and exports for all three types of tobacco. Views and recommendations from all segments of the tobacco industry will be received and considered. This includes growers, warehousemen, buyers and processors, as well as cooperatives, farm organizations etc. The meeting will be open to the public.

\$33 Million More Sought For Education

Proposed pay increases for teachers and additional funds to finance the Minimum Foundation Program would cost approximately \$33 million for the two years beginning next July 1.

The budget estimates are included in information which Finance Commissioner L. Felix Joyner and Budget Director Robert Corbett passed to the legislators this week.

Gov. Edward T. Breathitt pledged to raise the average pay of the state's 28,000 teachers by \$300 for the coming fiscal year and \$200 for 1962-63. This cost is estimated at \$23 million.

This year the average pay for teachers is \$4,613. In addition, \$10 million would be needed to keep the Minimum Foundation Program fully financed.

Revenue Commissioner James E. Luckett said tentative estimates of general fund revenue during the two years range from \$220 million to \$551 million. Collections this year are expected to run about \$245 million.

Joyner said requests totaled \$69 million for the biennium plus \$73 million for program expansion.

IKE AND GOP
The political upheaval caused by the assassination of President Kennedy may prove a former President Eisenhower actively in the search for a 1964 Presidential nominee. Although Eisenhower has disclaimed any desire to become a candidate, the former President recognizes the Republican situation has changed so rapidly as to make odds to get the kind of moderate candidate he believes can win.



As Christmas Day dawns we wish our dear friends everywhere a full measure of Christmas joy and peace. May the glow of happiness in your heart today keep shining through the coming year.

Lee Clay Products Co.



A Real Old Fashioned
Christmas

Pierce's 5¢ & 10¢ Store



GIRLS, OF ALL AGES, LOVE DOLLS - Examining the wide selection of dolls at a Morehead store are, from left: Mrs. Guy Reynolds, Lytton, Ky., holding baby son; and Mrs. Jesse Mays, Morehead. Many best selling dolls depicted children on television. Christmas desires of little boys change periodically, but every little girl, as every mother knows, treasures a doll.

American Christmas Puzzling To Transplanted Dutchman

For the transplanted European celebrating his first Christmas in the United States, there are bound to be a few discordant notes heard above the cheery chiming of holiday bells.

Frederick Kleinman, one Christmas removed from Holland, admits to bewilderment and some pain as he and his family try to continue their Dutch customs in a somewhat alien land.

An airlines executive, he looks down at New York's Fifth Avenue from his windowed office and winces. "So many Santa Clauses and carolers start singing weeks before Christmas so that it has become artificial by the time the day comes. We even have carol music piped through the office."

Christmas office parties puzzle him, as does the exchange of Christmas cards with friends and office personnel he sees daily.

The separation of church and secular matters which prevails in Holland is difficult to maintain here, he says. In his homeland, St. Nicholas, riding a white horse in the attire of a bishop, comes on the night of Dec. 5, and next day is the time for opening presents.

"For all children up to the age of 10, presents are put in glass tables," he says. "The children write funny verses for them. Of course the children believe St. Nicholas drops them down the chimney for all good children. If Peter will leave a switch instead."

With the fun part of the holiday season taken care of early in the month, Christmas carol singing at home, and family a reading of the Nativity story from the Bible.

Spiced, Glazed Nuts Necessary For Christmas

Prepare plenty of spiced and glazed nuts for serving to your holiday guests, suggests Elizabeth Helton, University of Kentucky Extension specialist in foods and nutrition. She offers some suggestions for preparing these tasty confections as given in the University of Kentucky Extension booklet, "The Joy of Entertaining."

For spiced nuts, mix 1/4 cup water, 1 cup sugar and 1 teaspoon cinnamon. Cook without stirring to 235 degrees or until a few drops of the syrup makes a soft ball when dropped in cold water. Set the saucepan in a pan of boiling water to keep the syrup hot. Blend together 1/2 cup sugar and 1/2 teaspoon cinnamon in a deep mixing bowl. Add 4 cups nuts to the bowl. Then stir the nuts in the dry sugar-cinnamon mixture until all kernels are covered with dry sugar. Separate kernels and store in a dry, cool place until ready to serve.

For glazed nuts, place 2 cups sugar, 1 cup water, and 1/2 teaspoon cream of tartar in a saucepan. Boil to 310 degrees hard crack stage) or until the syrup begins to discolor. Remove from heat and place saucepan in a pan of hot water. Place nutmeats in a bowl. Place the kernels on a buttered cookie sheet to cool. Remove cookie sheets.

Farmers May Have To File Income Tax In February

Kentucky farmers have to handle their income tax filing and the average city dweller, says S. Q. Allen, University of Kentucky Agricultural Extension Service economist.

For instance, if a bona fide farmer's business year began Jan. 1, 1964, that farmer must file his return and pay any taxes due by Feb. 17, 1964.

If the farmer prefers not to file his return (and pay tax) by that Feb. 17 deadline, then he must estimate his income tax and pay that amount by Jan. 15, 1964. He then would have until April 15, 1964 to file a return and pay any

balance due.

Allen pointed out that nearly all farmers must pay some income tax. The law requires persons having a gross income of \$600 or more in a tax year, to file and pay. Others may have to file a return to pay Social Security taxes even though they did not have to pay any income tax.

Records, of course, help the farmer at income tax time. The new Kentucky Farm Record Book is available at the county agent's office. It is especially designed to help farmers keep income tax data.

PLOT FELL FLAT

Numbered among those whose plans for having a Most Merry Christmas were completely upset are the three men who kidnaped Frank Sinatra Jr.

no arrests because it does not want innocent employees to have criminal records.

Stanley Benovis, representing two firms, said "The Sunday closing situation is in chaos in Louisville. The merchants don't know where they stand."

He said it was discriminatory to act against 22 establishments and ignore the same violations by countless other firms.

In reply to the city's contention that it is suffering irreparable harm because of interference with law enforcement operations, Benovis said:

"Some of the defendants listed are dead. How could they cause irreparable damages?"

The case is similar to but not directly connected with the Sunday closing struggle centering around Arian's Department Store and others of Louisville.

In that instance the Louisville Retail Merchants Association succeeded in getting an injunction against Arian's which the high court upheld earlier this month.

Christmas Parties Part Of Festive Air For Students

High school students and students home from college look forward to parties as part of the Christmas festivities.

A good rule for fun and fellowship at these parties is: keep it simple. All the ingredients necessary are congenial people and good food.

Buffet service is often ideal for a kind of informal entertaining because everything can be prepared in advance, freeing the host or hostess for mingling with the guests.

Easy to prepare, yet substantial party fare, can be a tray of assorted cold cuts and cheeses. This, together with plenty of bread and relishes, such as pickles, celery sticks, radishes, and salads, joining all habitual drunkards from getting drunk, he said.

Steinfeld said the city has made

Here's a recipe for a beverage that will suit nearly every taste. It's neither too sweet nor too tart.

GOLDEN HOLIDAY PUNCH
1/2 cup apricot nectar
1/2 cup honey
1/2 cup lemon juice
1 quart ginger ale
Dash of almond extract
Pinch of salt

Chill the ingredients thoroughly and combine just before serving. This recipe makes about 2 1/2 quarts.

An even simpler beverage to prepare is condensed canned hot broth served on ice without diluting. Just add a dash of Worcestershire sauce, if desired.

300 Turn Out For Cartoon Show

More than 300 area children turned out Saturday in subzero weather to take advantage of The Morehead News' free three-hour cartoon show at the Trail Theatre.

Russell Brown, manager of the theatre said the children "came early and stayed late."

The show was sponsored by The Morehead News as a Christmas gift to the children of the area.

MEAD FOR MAYSVILLE YOUR BEST TOBACCO MARKET

Merry Christmas

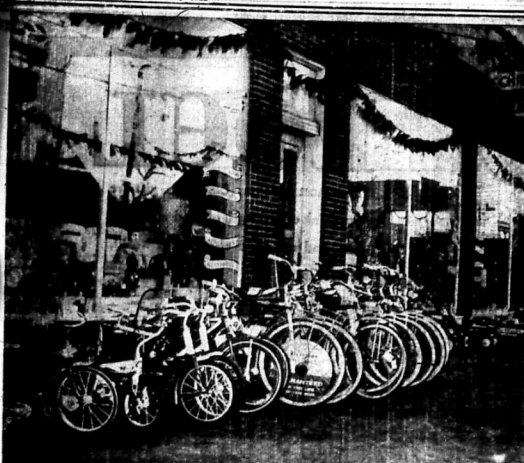
The world has felt the spirit of that holy night for almost two thousand years. On this day, may the world rejoice . . . and remember especially the peace, love, and brotherhood that was meant to be, from that moment on.

Dr. L. C. Long

GREETINGS AND BEST WISHES

AND ALL THE JOY THE NEW YEAR CAN HOLD

Imperial Cleaners



THREE WILL GLADDEN MANY LITTLE HEARTS — Bicycles, and tricycles, remain the gift for most boys and girls. A Morehead store featured this display, and had many more in the stock room.

Best Wishes

TO OUR DEAR FRIENDS AND PATRONS

The Southern Belle Dress Shop & Studio

Christmas Greetings...

MERRY CHRISTMAS TO ALL! We want this message to tell you what we would like to say to you individually—with a warm handclasp. We appreciate your patronage during the past year and our only hope is that it will continue . . . that we will come to know you better, to serve you better.

May Santa Claus be good to you, May this Christmas be the merriest for you and yours and may the New Year bring you everything your heart desires.

Ray's Saveway Super Market

CHRISTMAS

Big Store Furniture Co.

WITH ALL BEST WISHES

Gift for Christmas

AND THE NEW YEAR

Atkinson Florist

MERRY CHRISTMAS



Happiness, gaiety, and mirth fill the air. Christmas carols, children's happy voices, bells ringing overshadow the heavy spot in our hearts. We put our trust in God for a better world tomorrow, and we realize that we have much for which to be thankful today.

Johnson's All Star Dairy

Best wishes for Christmas



We bow our heads in prayer for peace and love among mankind on earth.

C. E. Bishop Drug Co.



YES, SANTA WE'VE BEEN GOOD BOYS! — Brothers Jeffrey and Mark Barber show no hesitation in telling Santa what they hope he will bring them for Christmas. Jeffrey wanted to kiss Saint Nick and pat his whiskers. They are the sons of Dr. and Mrs. George Barber, Oakley Branch Road.

State's Economic Development Is Ranked Second In Country

The National Society of Industrial Realtors has selected Kentucky as runner-up to Texas in economic and industrial development in the nation. The selection was made by an independent board of judges in the society's 1963 Professional Trophy Award competition. It is the third straight year that Kentucky has finished second. In recognition of this accomplishment, the society will present its first runner-up trophy to the Commonwealth at a Washington luncheon January 31. Wilson W. Wyatt, who headed Kentucky's economic-development efforts as lieutenant governor and Economic Development Commission chairman during the past four years, will accept the trophy in behalf of the Commonwealth. Wyatt now is serving as a special adviser to Gov. Edward T. Breathitt on economic development. "This award," Gov. Breathitt said Thursday, "is a significant honor for Kentucky. It evidences the national acclaim that the economic-development program has won for our state. I and the leaders of my economic-development team — Lieutenant-Governor Harry Lee Waterfield, Commissioner of Commerce Katherine Peden, and Associate Commissioner of Commerce James

Nutter Jr. — will continue and expand this program." Waterfield, Miss Peden, and Nutter have been invited to attend the S.I.R. luncheon with Wyatt. Wyatt said of the award, "It is recognition of the cooperative efforts of all Kentuckians. It is my conviction that Kentucky's economic-development program will continue to result in more jobs and a better way of life for all Kentuckians." Competition in the annual S.I.R. contest is open to all 50 states and to the provinces of Canada. In 1961, Kentucky tied for second place with North Carolina and Florida. In 1962, Kentucky placed second with New York and Florida. Maine won first place in 1961 and the province of Manitoba in 1962. In announcing the awards, S.I.R. officials said that "because of the consistently high caliber of Kentucky's industrial-development program the society would like to present a special runner-up trophy—the first ever given in this award competition to Kentucky." The awards are based on a study by the judges of written presentations of industrial and economic-development programs and their results.



COULDN'T YOU JUST LOVE this little boy and girl? There's no question in the minds and dreams of Ricky, 5, and Tammy, 3, that Santa will arrive Tuesday night. Their parents, Mr. and Mrs. Bobby Johnson, Clearfield, look on approvingly as they shop Morehead stores. Here, readers, is the true spirit of Christmas ... and of America.

NOEL

The most precious Christmas gift we can think of is the gift of good will. May you, and everyone else in the world, receive it!



Midland Trail Garage



Greetings

Deck the halls with boughs of holly! Now comes Christmas and the tree and the table vie for attention, for each is loaded with good things. From the bottom of our hearts, we wish you a very Merry Christmas.

Battson's Pharmacy