

STATEMENT

the magazine of MOREHEAD STATE UNIVERSITY
WINTER 2010 - VOL. XXVIII, NO. 1



INSIDE THIS ISSUE

THE FUTURE of Morehead State

2005-09 President's Report (p. 9)

FEATURING

Homecoming in Pictures (p. 32)

FOCUS on Research & Creative
Production at MSU (p. 8)

MSU grad's mission is helping
others in Iraq (p. 6)

Dear Alumni and Friends of Morehead State University,

The start of a new year is an excellent time to look back fondly at our rich past and to plan for our bright future. In more than 120 years, the sweep of history has carried Morehead State University and its predecessor institution, the Morehead Normal School, from one makeshift classroom to the world of Web-based classes and a satellite tracking system which reaches from a campus ridge top literally to the stars.

Preserving what is unique about MSU has been at the forefront of our decision-making processes. As a public regional institution, we are critical to the future well-being of thousands of young people as well as returning adult students. We recognize that Morehead State's role in the Commonwealth will be very important to economic development and regional engagement in East Kentucky and beyond.

What does the future hold for MSU? We stay committed to our vision of becoming the best public, regional university in the South. There is much debate about what "the best" actually means and, in fact, it can mean very different things to different people. We should and will strive to be the best in all areas including instruction, scholarship, service, philanthropy, athletics, etc.

It is hard for Sue and me to believe that we have completed five years at MSU and what an amazing time that has been. We look forward to a future that holds great promise for this institution.

We encourage you to be an active participant in building that future.



Wayne D. Andrews
President



President Andrews holds a future Eagle, his grandson, Nico.

STATEMENT

the magazine of MOREHEAD STATE UNIVERSITY



CONTENTS

COVER

9 2005-09 PRESIDENT'S REPORT

FEATURE

6 MSU GRAD'S MISSION IS HELPING OTHERS IN IRAQ

7 ALUM IS BREAKING BARRIERS & INSPIRING LEADERS

8 FOCUS:
Seed to Stalk: A Sorghum Tradition

FOCUS:
Lost History & Stolen Identity

29 ALUMNI IN PHILANTHROPY

30 ALUMNI FEATURES

UPDATES

4 AROUND MSU (News & Notes)

32 EAGLE EYE: PHOTO STORY
Featuring 2009 Homecoming

34 FRIENDS

35 IN MEMORIAM

36 FAME & GLORY (Athletics Updates)

38 CLASSNOTES (Alumni Updates)

39 UPCOMING EVENTS



Contact the Office of Alumni & Constituent Relations at (800) 783-2586 or via e-mail at alumni@moreheadstate.edu.

STATEMENT is published three times a year by Morehead State University through an off-campus printing contract with Jeffrey Fannin Enterprises, Morehead, KY • STATEMENT is distributed to alumni, faculty, staff, benefactors, parents, and other friends of Morehead State University. Articles may be reprinted without permission. We appreciate notification of reprint use. Opinions expressed herein do not necessarily reflect the official policies of Morehead State University. Address correspondence to: STATEMENT Editor, Office of Alumni & Constituent Relations, 150 University Blvd., Morehead, KY 40351, or e-mail statement@moreheadstate.edu • Dr. Wayne D. Andrews, president, Morehead State University; Sylvia Lovely (73), chair, Board of Regents; Patricia Dorton Whitaker (75), president, MSU Alumni Association, Inc.; Steve Lewis, chair, Board of Trustees, MSU Foundation, Inc.; James Shaw, publisher; Mindy Highley (91), Jami Hornbuckle (96), Tami B. Jones (82), April Hobbs Nutter (97), Pauline Young (84), editors; Toni Hobbs (02), creative director; Kem Tackett (04), production manager; Tim Holbrook (94), Guy Huffman (02), photographers; Jason Blanton (03), contributing writer.

Morehead State University is committed to providing equal educational opportunities to all persons regardless of race, color, national origin, age, religion, sex, sexual orientation, disabled veterans, recently separated veterans, other protected veterans, and armed forces service medal veterans, or disability in its educational programs, services, activities, employment policies, and admission of students to any program of study. In this regard the University conforms to all the laws, statutes, and regulations concerning equal employment opportunities and affirmative action. This includes: Title VI and Title VII of the Civil Rights Act of 1964, Title IX of the Education Amendments of 1972, Executive Orders 11246 and 11375, Equal Pay Act of 1963, Vietnam Era Veterans Readjustment Assistance Act of 1974, Age Discrimination in Employment Act of 1967, Sections 503 and 504 of the Rehabilitation Act of 1973, Americans with Disabilities Act of 1990, and Kentucky Revised Statutes 207.130 to 207.240. Vocational educational programs at Morehead State University supported by federal funds include industrial education, vocational agriculture, business education, and the associate degree program in nursing. Any inquires should be addressed to: Affirmative Action Officer, Morehead State University, 101 Howell McDowell, Morehead, KY 40351, 606.783.2097.

AROUND MSU

Brown to recruit students for MSU



Kenneth J. (Jamie) Brown (83) of Morehead, a veteran community and technical college educator, has joined MSU's effort to serve more students from two-year institutions.

Brown will serve as MSU's director of transition outreach services with prime responsibility for recruiting and retaining transfer students from the Kentucky Community and Technical College System (KCTCS) and other two-year colleges.

Brown comes to MSU after 25 years in various administrative roles at the Rowan Campus of Maysville Community and Technical College and its predecessor institutions. He served as chief campus officer.

His previous assignments included district vice president and chief institutional officer from 2003-09, director of Rowan Technical College from 1990-2003 and workforce coordinator of Rowan State Vocational-Technical School from 1984-90.

Brown holds bachelor's (83) and master's (86) degrees from MSU.

McBride joins enrollment services



Jill E. McBride (07) has joined the University's Office of Enrollment Services as non-traditional and commuter coordinator.

In her new position, McBride addresses the needs and concerns of nontraditional and commuter students. She serves as the primary advocate for student veterans and those students who are participating in Project Graduate, a statewide program designed to help students with previous college credit return to college to complete their studies.

Before assuming her current position, McBride was regional campus assistant at MSU at Mt. Sterling for five years and worked with non-traditional students.

McBride, and her husband Dr. Scott McBride, interim dean of the Caudill College of Arts, Humanities and Social Sciences, reside in Morehead, with their daughter, Molly.

Five receive Million Dollar Club Award



Kentucky SBDC

Five Morehead State University East Kentucky Small Business Development Center management consultants received the prestigious "KSBDC Million Dollar Club Award" at the Statewide Kentucky Small Business Development Center annual meeting.

The Million Dollar Club Award is given to SBDC consultants who assist their clients in receiving \$1,000,000 or more in business capital.

Those receiving the award were **David Barber (84)**, Morehead; **Kimberly Jenkins (91)**, Ashland; Mike Jackson, Maysville; **Mike Morley (93)**, MSU/EKSBDC director, Pikeville, and **Michael Rodriguez (00)**, West Liberty.

MSU has been a member of the Kentucky Small Business Development Center Program since 1983 and currently operates six locations throughout the 25 most eastern counties of Kentucky.

Willis honored for her commitment to reading in eastern Kentucky



Debra Hixson, left, and Dr. Melinda Willis

Dr. Melinda Willis, associate professor of education, has been honored for her work with the Kentucky Reading Project (KRP).

Her commitment to serving teachers in eastern Kentucky was recognized through a book donation, in her name, to the Louisa East Elementary School library in Lawrence County. The donation was made by Nawanna Barton Privett, a native of Harlan County and former executive director of the Collaborative Center for Literacy Development.

KRP is a professional development initiative for Kentucky public school elementary (K-5) teachers. It is designed to improve student achievement and emphasize family involvement in literacy. Since its inception in 1998, more than 2,500 teachers representing more than 158 school districts have been

trained in KRP; Dr. Willis has been responsible for the training of 280 teachers from East Kentucky. She has been a KRP director since the project began.

Dr. Willis led a group from MSU in a professional development workshop for Lawrence and the surrounding counties. Twenty-nine teachers participated in the workshop.

Principal **Debra Hixson (04)** offered her school as a host for the Morehead State group. Louisa East will be the recipient of the library book collection, which will greatly impact the school, according to principal Hixson.

Graduates achieve perfect 100 percent pass rate on national exams

Graduates of two of MSU's degree programs have achieved a perfect 100 percent pass rate on their national board examinations.

The May 2009 graduates of the baccalaureate nursing and MSU at Mt. Sterling associate degree programs achieved a perfect score on the National Council Licensure Examination for Registered Nurses.

All the 2008 graduates in imaging sciences passed their national licensure exam on their first attempt. This 100 percent pass rate for the 56 graduates includes a total of 81 examinations.

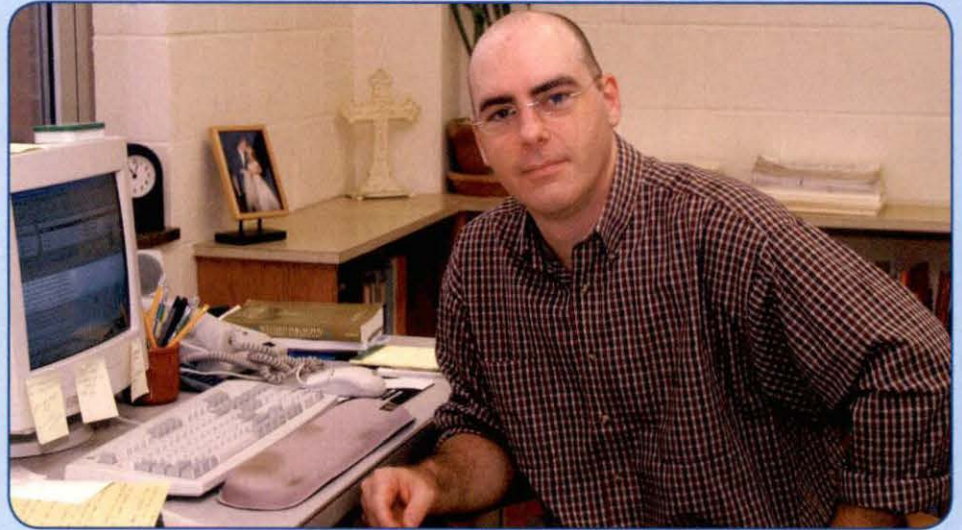
Entry into the practice of nursing in the United States is regulated by the licensing authorities within each jurisdiction of the national council. The Kentucky Board of Nursing (KBN) is the licensing authority for the state.

To ensure public protection, the KBN requires a candidate for licensure to pass an examination that measures the competencies needed to perform safely and effectively as a newly-licensed, entry-level registered nurse. The KBN monitors the performance of each program of nursing to review the performance compared with the outcome achievement measure of an 85 percent pass rate.

Graduates achieved above the outcome measure for Kentucky and have exhibited superior accomplishments. The MSU at Mt. Sterling's associate degree program had a 95.5 percent graduation rate.

Several nursing programs, which combine general education with professional nursing theory and clinical education, are available.

The Department of Imaging Sciences has two degree programs: Associate Degree in Radiologic Sciences and Baccalaureate Degree in Imaging Sciences with two areas of concentrations, computed tomography/magnetic resonance and diagnostic medical sonography.



Dr. Davison writes and speaks about his work

Dr. Scott A. Davison, professor of philosophy, published a chapter titled "Petitionary Prayer" in the Oxford Handbook of Philosophical Theology, edited by Thomas P. Flint and Michael Rea (Oxford, 2009).

According to the publisher, this collection includes "26 contributions from an outstanding international team of authors" representing major research programs such as those at Purdue University, the University of Notre Dame, the Claremont Colleges, Oxford University, Boston College, the University of Virginia and Georgetown University.

He was invited to present new work on this topic from his upcoming book project to the University of Texas at San Antonio's Workshop on Metaphysics and Philosophy of Religion in March, and invited to respond to a paper written about his chapter at the Pacific Division Meeting

of the American Philosophical Association in Vancouver, British Columbia, in April.

In addition, the Templeton Foundation sent Dr. Davison to China in May to present a five-day seminar to philosophy students at Wuhan University on the subject of science, religion and intrinsic value, which is the topic of another book project in progress.

According to the Templeton Foundation, Dr. Davison is "one of perhaps two dozen eminent Western scholars who will be engaging Chinese professors and students with lectures and seminars over the course of this three-year project," which is designed to "disseminate Western scholarship on science, philosophy and belief in Chinese academic networks" and to "cultivate new collegial relationships and networks of communication in this field."

Two appointed to judgeships in the Morehead area

Gov. Steve Beshear has appointed two Morehead State University alumni to judgeships in the Morehead area.

William W. (Willie) Roberts (96) of Morehead, county attorney for Rowan County, was named District Judge for the 21st Judicial District, Division 1, consisting of Bath, Menifee, Montgomery and Rowan counties.

David D. Flatt (79) of Olive Hill, commonwealth's attorney for the 37th Judicial Circuit, was appointed Circuit Judge to serve in Family Court for the 37th Circuit, Division 2, consisting of Carter, Elliot and Morgan counties.



MSU grad's mission is helping others in Iraq

Army 1st Lt. Shannon "Nikki" Martin (07) is currently serving as a medical officer in Iraq. She is thankful for her education and the opportunities she has been afforded.

"I have learned a lot in the 12 months I have spent in Iraq with my unit, Charley Company, 82nd Brigade Support Battalion, 3rd Brigade Combat Team, 82nd Airborne Division," she said.

"My most memorable mission would be the Iraqi Schools' Mission where we were attached to infantryman in assisting the Iraqi Army in handing out school supplies, books and dolls at three separate Iraqi schools. Getting to mingle with the children of the schools, and walk to a local village was a very rewarding opportunity."

Martin received a Bachelor of Arts degree with a major in health promotions and a minor in military science.

"MSU set me up for success both for my career in the Army and my future career in the civilian work force. My four years in the University's ROTC Program were full of memories and people I will never forget."

A Louisville native, Martin was the highest ranking cadet in MSU's ROTC history and was top in her class for four years. She received a ranking of third out of 3,806 cadets from 272 universities across the nation, excluding West Point.

She was among 55 ROTC cadets and midshipmen commissioned by former President George Bush in the White House in

May 2007. The program was part of National Military Appreciation Month.

As a student, Martin received numerous awards for her accomplishments. During her senior year, she was presented the American Legion Award for Scholastic Excellence, the George C. Marshall Award, and the Department of the Army Superior Cadet Decoration, Cadet Battalion Commander Award, Dean's List Award and the Silver Athletic Award. She also was active in Raider Company and was president of Scabbard and Blade, a national military honors society, which she reestablished on campus.



Alum is breaking barriers and inspiring leaders

David L. Holton II (84) has been appointed by Kentucky Gov. Steve Beshear as district judge for Division 9 of the 30th Judicial District.

In a law career that spans two decades, Holton was a prosecutor with the Jefferson County Attorney's Office for 19 years before becoming a judge. He also has experience as an assistant county attorney and private lawyer, focusing on family law.

This is his second gubernatorial appointment in as many years. At his first appointment, Holton was the first visually impaired person to serve as judge in Kentucky.

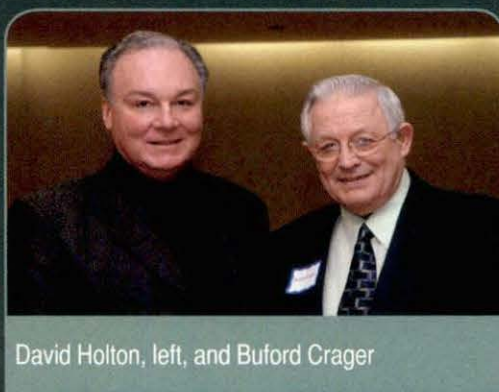
"It is not important that it happened to me but it is important that it happened," said Holton, who lost his sight because of a brain tumor when he was 10-years-old. "I hope it does break down some barriers and make things easier for the people who follow me."

Describing himself as "fortunate," he offers thanks to those who helped him along the way: parents who read him his school books, friends and roommates who provided assistance and those who gave him the personal attention he needed to reach his goal.

After attending the Kentucky School for the Blind, Holton enrolled at Morehead State

University which he continues to call "an exceptional place." With his guide dog Buddy, Holton returned to the MSU campus earlier this year to serve as the keynote speaker for the Emerging Leaders Symposium.

"This is a very special place for me," said Holton. "I tell people I got a million dollar education at Morehead State, and I really mean it. Not just in the classroom, but outside the classroom, with my experiences serving on the Board of Regents as Student Government Association president.



David Holton, left, and Buford Crager

"The community, not just the people on campus, was really good to me. I am real proud of how this University is today," said Holton. "MSU is going in the right direction and you can tell that in how everyone is upbeat on campus."

Holton took the advice of his father, **David (63)**, when he recommended his *alma mater* as a place for higher education. "When I started looking at colleges, he suggested that I look at MSU. He told me his friend **Buford Crager (61)** was vice president of student affairs and to make sure to find him."

Crager, who became Holton's mentor, along with **Larry Stephenson (64)**, dean of students, played a big part in his college education and life.

During his days at MSU, Holton and his first guide "Simon the Wonder Dog" became well-known across the campus. He was a member of Sigma Nu fraternity and remembers the time Simon beat him in the title for "Big Man on Campus." Holton received the award the next year.

After graduating from MSU, he continued his education at the University of Kentucky College of Law where he received a Juris Doctor degree.

Holton and his wife, Stephanie, have two sons, Brooks and Max, and live in Louisville's Valley Station. Active in sports as a youngster, he continues to play football and basketball with his sons and remains an avid sports fan, regularly listening to Eagle athletics via the Internet.

Seed to Stalk: A Sorghum Tradition



Jeffrey Hill has been making videos for more than 15 years documenting a variety of subjects, individuals and groups, which has included musicians,

storytellers, Kentucky folk artists and comedians.

A project funded by a Creative Productions grant through MSU's Institute for Regional Analysis and Public Policy that he completed in 2007, has gained him the most notoriety to date.

When Hill relocated from Michigan to Morehead in 2002, he was introduced to sor-

ghum making, a dying industry in Kentucky and a process that was unfamiliar to him.

Hill linked up with Ron Welch, a member of one of the last families in Menifee County who still produce sorghum. Welch agreed to let Hill tell his story.

For approximately 10 months, Hill visited the farm, capturing the planting, growing and harvesting the grain crop. He continued through the process of extracting the sweetness from the stalks and boiling it down to a liquid that can be used as table syrup or to sweeten baked goods.

Throughout his works, Hill strives to bring the person to life. "Welch is the only voice in this video," he said. "I want to capture the personal identity of the individual and what they do."

With the taping complete, Hill sought assistance from some advanced production students who were studying electronic media.

They packaged the final product which was made available to numerous state university and public libraries.

Hill is pleased with the video and honored that it aired on "Kentucky Life," the most successful local program on KET (Kentucky Educational Television). The video also debuted in Africa, where sorghum is an important food crop.

The film, "Seed to Stalk: A Sorghum Tradition," was screened at various film festivals internationally, including St. John, Canada; Swaziland, South Africa; as well as in Texas and North Carolina where it received awards.

A highlight for Hill, assistant professor of mass communication in MSU's Department of Communication, Media and Leadership Studies, was the screening in Anchorage, Alaska, at the Anchorage International Film Festival.

There, he made a presentation on the video and the process involved.

Lost history and stolen identity

Throughout the world, battlefields are important to how people see themselves and their history. At times, however, foreign governments seek to distort the past for their own political needs. Governments which administered Ukraine--be they Poland, Russia, Germany or Austria--sought to downplay any reference to Ukrainian national identity and Ukrainian national history. As a result, many of the historical things we take for granted as American citizens were denied or destroyed in Ukraine.

To help find the events which gave legal recognition to the modern Ukrainian state, in 2002 Dr. Adrian Mandzy, associate professor of history at MSU, began studying the battlefields of Great Revolt of 1648. Working with colleagues and students from Poland, Ukraine and the U.S., he undertook a five-year battlefield study of the 1649 Battlefield of Zboriv. Funding for this research was made possible by two separate Fulbright-Hays Fellowships.

The project has revealed a wealth of new information about the battle and the events that helped shape the history of modern

Eastern Europe. In conducting the battlefield survey, Dr. Mandzy uncovered a section of the 1649 Zboriv battlefield. As a result, the area was declared a historical landmark and a registered archaeological site.

Dr. Mandzy is an internationally recognized scholar in the field of battlefield studies. Based on his previous work, he was asked to head an international team to look at the Poltava battlefield in Ukraine in 2006.

Fought in 1709, this battle established the Russian Empire and witnessed the end of Ukrainian political power. Ukraine's ally, Sweden, never recovered from the defeat at Poltava.

The initial survey of the battlefield in 2007 indicated that the current Russian-built commemorative victory monuments are not in the place of the actual engagement. Further research is planned for fall 2008. Swedish National Television is making a series of films about the project and one of Sweden's most prestigious book publishers is helping to sponsor the research. A monograph about the project will be published in Ukrainian, Swedish and English in 2009.





2005-09 President's Report

ASPIRE to Greatness

Dear Regents and Other Friends:

In 2006, the Board approved a strategic plan for Morehead State University titled ASPIRE 2006-10. It is with great pride that I submit this report that highlights progress that has been made toward achieving the goals of ASPIRE comparing baseline data from 2005-06 with data from the 2008-09 fiscal period.

By any measure, MSU is an institution moving ahead, despite state and national economic issues. We are doing so because of the collective determination, intellect, and hard work of everyone engaged in our academic enterprise.

As you review this publication from your own perspective, please keep in mind that the members of our University community accomplished all of these good things together. I believe this printed account is truly reflective of the remarkable commitment we share to make MSU the best public regional university in the South.

I appreciate those who assisted in compiling this concise chronology of our progress achieved over the past five years. Please share this report with others as an expression of your pride and commitment to our university.



Wayne D. Andrews
President



Vision:

We aspire to be the best public regional university in the South.

Mission:

We are a diverse community of learners committed to student success. MSU is accredited as a comprehensive University offering quality higher education opportunities in a collegial and open environment. MSU pursues academic excellence, research, community engagement and life long learning. MSU is dedicated to improving the quality of life while preserving and promoting the unique cultural heritage of East Kentucky.

Values:

We strive to exemplify these core values:

PEOPLE come first and are encouraged to achieve their full potential;

Commitment to SCHOLARSHIP, LEARNING and SERVICE is embraced;

EXCELLENCE is achieved through TEAMWORK, LEADERSHIP, INNOVATION and ACCOUNTABILITY;

DIVERSITY of people and thought is respected;

PARTNERSHIPS are built on honesty, integrity and trust.

Strategic Goals:

- Academic Excellence
- Student Success
- Productive Partnerships
- Improved Infrastructure
- Resource Enhancement
- Enrollment and Retention Gains

MSU by the NUMBERS 2009

Founded: **1887**

Fall 2009 Enrollment: **9,046**

Average first-time Freshman ACT: **21.5**

Freshmen Fall-to-Fall Retention: **71%**

Undergraduate Kentucky Residents: **85.9%**

Service Region Kentucky Residents: **74.6%**

Graduate Students: **1,456**

Student-Faculty Ratio: **17:1**

2007-08 Degrees Conferred: **1,526**

Classes with 20 students or less: **76%**

Classes with 30 students or less: **91%**

2009 Fall Tuition (KY Resident): **\$3,108**

2009 Fall Residence Hall Rate: **\$1,636**

2009-10 Operating Budget: **\$124 million**

Undergraduate Degree Programs: **70**



Academic Excellence

How will we develop, deliver, and maintain superior academic programs?

Morehead State is vigorously engaged in internal and external assessments of its academic programs on three fronts -- Academic Program Review, General Education Reform and preparations for reaccreditation in 2011 by the Southern Association of Colleges and Schools (SACS). This work is essential because high quality academic programs are the heart of any progressive institution of higher education. Moreover, we have established new programs to engage students outside the classroom in research and other scholarly activities to further enhance their overall learning experience.

Academic Program Review

Initiated in September 2007, the Academic Program Review was designed to provide an in-depth analysis of degrees and thereby identify the mix of academic programs appropriate for MSU to offer as a 21st century institution. Led by the Provost's Council with direct input from the five academic deans, the process included broad faculty participation with emphasis on input and feedback. The final report evaluated and placed each academic program into one of five categories: Enhance, Maintain and Improve, Maintain with Modifications, Maintain with Conditions and Delete or Phase Out. The process also resulted in the proposed development of eight new degree programs.

Implementation of the final audit report is on-going and will require:

- that we prioritize programs to be enhanced during this time of scarce resources,
- that we set realistic productivity goals in terms of enrollment, credit hours generated and degrees produced,
- that we establish a clear criteria for continuing certain programs and
- that we eliminate obsolete programs on a phased but deliberate schedule.

ACADEMIC PROGRAMS



General Education Curriculum Review

Morehead State University initiated the process of reforming the General Education program in the Fall 2007. The goal of the reform was to build foundational competencies that more effectively prepare students for academic programs of study and for the 21st century global environment. The new program will include assessment components that allow for a cycle of continuous improvement with a focus on quality and effectiveness. Revised General Education courses will begin to be offered in the Fall 2010 semester with full implementation of the redesigned curriculum scheduled for Fall

2011. The curriculum review will help to ensure that students have the opportunity to acquire learning outcomes required for each degree within 120 credit hours and to complete graduation requirements within four years.



Morehead State has been recognized for the sixth consecutive year as one of the top public universities in the South in the 2010 edition of "America's Best Colleges" by *U.S. News & World Report*.

Undergraduate Research Fellowship Program

The Undergraduate Research Fellowship program initiated in Fall 2005 has provided nearly 300 opportunities for students to work one-on-one with leading faculty on research or creative production projects in their academic program of study. Students participating in this program earn a competitive wage and gain hands-on research experiences typically not available until graduate school.

Celebration of Student Scholarship

The number of students and faculty mentors participating in the Celebration of Student Scholarship has soared since its inception in 2006. In the spring of 2009, 241 students delivered 126 presentations supported by 98 faculty mentors. Ashley Adkins, a sophomore government major, presented her research at the Council on Undergraduate Research "Posters on the Hill" program at the capitol in Washington, D.C.

SACS Accreditation Review

Almost 200 faculty, staff and students are working on various committees to prepare for the University's reaccreditation application with the Southern Association of Colleges and Schools (SACS). A vital piece of the reaccreditation process includes the development of a comprehensive "Quality Enhancement Plan" (QEP) specifically designed to improve student learning. The University is scheduled for a site visit from SACS in March 2011.

In addition to Morehead State being accredited by the Commission on Colleges of the Southern Association of Colleges and Schools (SACS), many academic programs achieve discipline level accreditations. The following program areas hold additional external academic accreditations:

Paralegal Studies	Industrial Technology
Veterinary Technology	Music
Business	Theatre
Respiratory Care	Teacher Education
Imaging Sciences	Nursing
Social Work	Military Science
Radiologic Technology	



Did you know ...

- MSU graduates are accepted into professional schools at rates well above state and national averages.
- In a recent market research study, MSU faculty ranked higher in comparison to other state universities, including the University of Kentucky, in terms of mentoring students.
- MSU offers a student-faculty ratio of 17:1.
- The average ACT of an entering freshman at MSU exceeds both state and national averages at 21.5.
- Graduates from MSU's Imaging Sciences program exceed national exam pass rates with a five-year average of 99.6 percent passing the exam on their first attempt.
- MSU's space science degree program is one of only five programs nationally available to train the next generation of employees in aerospace. MSU students participate in The Kentucky Space program which has fostered significant student success since its inception in 2006. The Kentucky Space Missions, to date, have led to three publications in major aerospace journals--with students serving as primary authors--and over 24 presentations at local, regional, and national conferences.
- Master of Public Administration degree graduates have achieved a 100 percent placement rate with respect to employment or further graduate study.
- The College of Education received approval and a commendation from the Kentucky Professional Standards Board in 2009 for an "exemplary" proposal to offer a Master of Arts in Education for the Teacher Leader.
- A Bachelor of Fine Arts in Creative Writing degree was created in 2009.



Student Success

How will support services fulfill student academic and cocurricular needs?

MSU recognizes that institutions in today's world must do more than educate students within their chosen academic areas. To be prepared for productive, satisfying lives after college, our students must be engaged outside of the classroom in a broad variety of activities. Development of active citizens and community leaders is a major responsibility that we take most seriously. Our commitment to student success combines challenging academics with a myriad of student engagement opportunities outside the classroom and the campus.

Service Learning

Learning to become a productive citizen is part of the overall academic experience at Morehead State. A total of 230 faculty, staff, and students participated in alternative spring break activities since 2006 providing support for citizens and communities in Gulfport, Miss., and in Kentucky in Louisville, Hazel Green and Rowan County.

Students participate annually in the American Democracy Project, which is a multi-campus initiative that seeks to create an intellectual and experiential understanding of civic engagement for undergraduates.

Diversity

Morehead State University restructured and expanded its diversity program by appointing a President's Diversity Council, updating the Diversity Plan, and increasing funding by more



than \$700,000 to hire additional minority faculty and staff and implement other initiatives toward achieving diversity goals. Also, the institution created and filled the position of Chief Diversity Officer as a member of the President's Cabinet. In addition, a new minority retention coordinator was hired.

The Board of Regents approved a diversity resolution in Spring 2009 to reaffirm the institution's commitment to an infusion of diversity and a culture of inclusiveness in all aspects of the University. The Offices of Multicultural Student Services, Minority Retention and Disability Services were relocated to the Adron Doran University Center to provide enhanced coordination and easier access for all students.

Student Programming and Recreation



Construction has begun on a new \$24 million Campus Recreation Center to provide students with a state-of-the-art facility for wellness and recreation. This facility was requested by the students to be funded from student fees and will be the first LEED-certified building at MSU and the first “green” campus recreation center in the state.

A combination of student fees and private gifts supported renovation of the Larry Wilson Bowling Lanes in 2007-08.

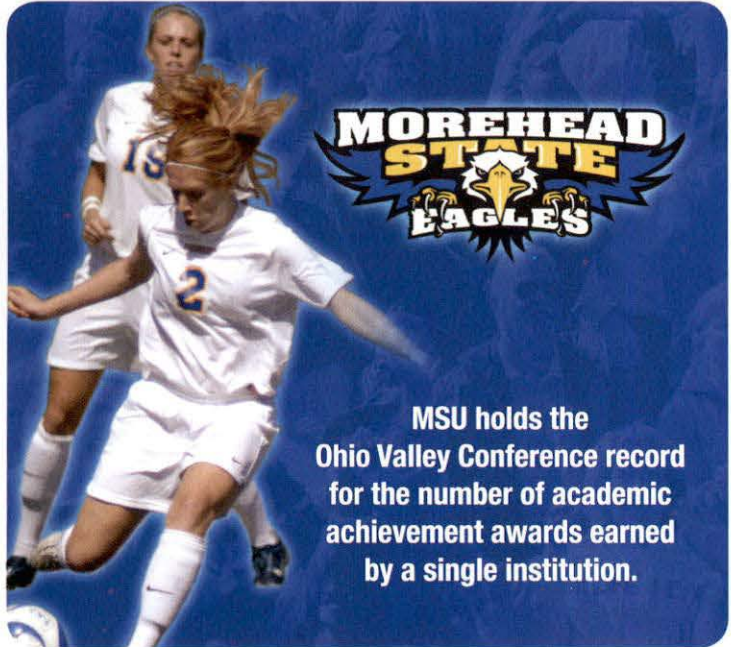
Significant realignments of personnel and budget resources have been completed to address high-priority student support concerns. Since 2005, the annual budget allocated to Student Activities has increased by \$50,000. These are funds used to offer events such as speakers, concerts or other activities that engage students in out-of-class enrichment activities.

Intercollegiate Athletics

Eagle athletics received recertification by the NCAA in 2009. Investments in intercollegiate sports have ensured that athletic scholarships have maintained their value as the cost of tuition has increased. Eagle athletes responded by continuing to dominate the athletic conference in academic performance bringing home the Ohio Valley Conference (OVC) Academic Achievement award in four of the past five years.

Jacobs Field at Jayne Stadium received its third generation of artificial turf just in time for the fall 2009 season. The facility is home to MSU’s football and soccer teams and the Eagle marching band.

The Eagles won the OVC conference titles and advanced to NCAA championship play in Women’s Soccer, Men’s Basketball and Coed Rifle competition in 2009 while the MSU Coed Cheer Squad brought home its eighth consecutive and nineteenth overall national title.



KEY PERFORMANCE INDICATORS



Did you know ...

- More than 2,500 students participated in 110 recognized student organizations, in 2008-09.
- More than 3,000 students participated in 24 intramural activities, in 2008-09.
- MSU was recognized in 2005 as being in the top 15 percent of the U.S. Army’s ROTC Cadet Command’s 271 units across the country.
- The Emerging Leaders Symposium was launched in 2008 to provide students practical skills, knowledge of theoretical foundations of leadership, opportunities to network and information on further leadership opportunities. A total of 167 students participated in the first two years of the program.
- MSU’s 2008 imaging sciences program graduates achieved a 100 percent pass rate on their respective certification exams on their first attempt.
- MSU’s Spring 2009 graduates of the baccalaureate nursing and MSU at Mt. Sterling associate degree programs achieved a 100 percent pass rate on the National Council Licensure Examination for Registered Nurses.





Productive Partnerships

How will we utilize partnerships to benefit the people, communities and economy within the MSU service region?

Morehead State is aggressive in looking for opportunities to partner with other state agencies, universities, local governments and communities in unique ways to enhance services and create operating efficiencies. In 2008, a regional advisory board of citizen and business leaders from throughout the service region was organized to assist MSU with identifying regional stewardship opportunities. Focus areas for regional engagement include education, health and wellness, community-building and economic development.

Morehead State is the lead agency for a consortium of institutions and agencies in partnership with Martin County Schools to improve public health among adults by encouraging middle school students to eat healthy foods, exercise regularly and avoid habits that harm their bodies. To date, the project has received \$1 million in federal funds through the support of U.S. Rep. Hal Rogers.

Through the College of Education's 21st Century Education Enterprise's partnership with the Kentucky DataSeam Initiative, Morehead State has provided professional development opportunities to more than 300 elementary and secondary education teachers employed in 19 of the 22 counties defined as Morehead State's service region. Professional development focused on a variety of content areas at all grade levels and incorporated techniques for using technology to improve the teaching-learning process.

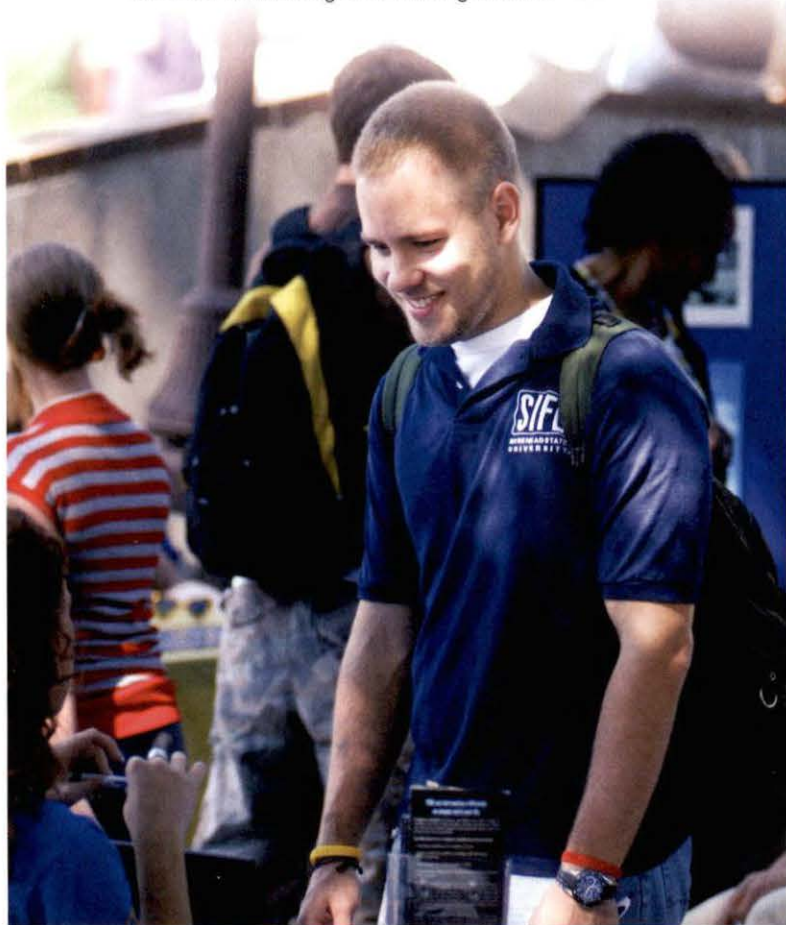
The three-way partnership of MSU, St. Claire Regional Medical Center, and the University of Kentucky is changing the landscape of the community as well as the landscape for how health professionals are trained in a collaborative clinical and instructional environment. The partnership has resulted in the construction of the Center for



Health, Education and Research (CHER) which will not only accommodate MSU's programs in Nursing and Radiological Science but will also enable UK to bring two years of its rural physician track to Morehead and St. Claire Regional Medical Center. Morehead State already hosts UK's master's degree programs for physician's assistant and advanced registered nurse practitioners.

Did you know . . .

- A study completed in 2007 by MSU's Institute for Regional Analysis and Public Policy determined that every \$1 MSU receives in funding from the state generates a \$6 return on investment back to the Commonwealth's economy.
- MSU's Kentucky Folk Art Center received the Folk Heritage Award for its role in promoting Kentucky's self-taught visual artists and conserving their work.
- The City of Morehead Recreation and Parks Department and MSU's intramural program collaborated to allow MSU to use Greenhill City Park for softball activities and City Recreation to use Wetherby Gym for its basketball league.
- Over 100 students, faculty, and staff participated in the first Rowan County Repair Affair.
- MSU achieved the distinction of joining 75 other institutions nationally to be awarded the elective classification of "community engagement" institution by The Carnegie Foundation for Advancement of Teaching.
- MSU's Police Department provides rapid deployment training for regional law enforcement and other campus law enforcement agencies and hosts Department of Criminal Justice regional training events.



The Office of Alumni & Constituent Relations has partnered with Career Services to expand employer networking resources and create a mentoring program for alumni and students involved in job searches.

The Institute for Economic Development, located on the MSU West Liberty campus, provides partnership opportunities for entrepreneurs throughout the region served by the Small Business Development Centers in West Liberty, Paintsville, Pikeville, Ashland and Maysville.

MSU has collaborated with other state universities to reduce costs for common technology services through statewide agreements including contracts for the Blackboard Course Management System, Kentucky Virtual Library automation and subscription services and Kentucky Postsecondary Education Network (KPEN) and the Kentucky Regional Optical Network (KyRON) for Internet and Internet2 access.

Trading the former Cowden property on West Main Street to Rowan Fiscal Court allowed MSU to gain title to most of the existing courthouse square at the east end of campus. The county, in turn, acquired space to build a new \$16 million judicial center to serve the Rowan County community.

In 2006, Morehead and Rowan County took the unprecedented step of local intergovernmental cooperation by jointly engaging in Kentucky's first NewCity initiative. Morehead State University and other community leaders joined in the ongoing effort to define and promote the economic and social prosperity of the community through citizen engagement. Multiple listening sessions throughout the city, the county, and on the MSU campus were held as citizens engaged the community's leadership in open dialogue about the future of their community.

MSU established an arrangement with the Appalachian Regional Commission in Washington, D.C. and the Governor's Office for Local Development in Frankfort to create the Kentucky Appalachian Higher Education (KY AHED) Center. In this program, MSU is working with 15 high schools and four community and technical colleges in East and Southeast Kentucky to provide districts with funds to enable students to visit an institution of higher education in this region. MSU has received approximately \$1 million to administer the program, which has impacted the lives of 692 high school students who have pursued a postsecondary experience.

MSU implemented the Center for Regional Engagement which submitted a proposal and received approval from the Council on Postsecondary Education for funding each year beginning in 2007-08 through 2009-10.



Improved Infrastructure

How will we effectively manage human, capital and fiscal resources?

Since 2005, MSU has responded to the challenges of an aging campus with a \$100 million investment in physical facilities, technology, utilities and other support areas. Guided by the priorities of its strategic plan, the institution also has addressed improvement of compensation and benefits for employees, strategic reallocation of resources in response to state budget cuts, and development of creative solutions to management problems leading to more effective and efficient operations in Morehead and at five regional campuses. For the first time in decades, major structures have been razed to make way for new facilities as MSU positions itself for the 21st century environment.

Capital Infrastructure

MSU engaged a national housing consulting firm to assist in the development of the University's first campus housing master plan, which is a phased, 10-year plan for the expansion of housing units, renovation of existing housing, and the establishment of rental rates to support debt service. The plan approved by the Board of Regents in 2006 calls for an existing residence hall to be renovated or a living facility to be constructed each year of the plan.

As prescribed by the University's Housing Master Plan, Nunn Hall has undergone a \$5 million renovation and a \$4.6 million renovation in Alumni Tower is now in progress. Wilson Hall and Regents Hall were demolished to make space for the Campus Recreation Center scheduled to open in 2011 and a parking structure that will serve students living in campus housing facilities.

A state-of-the-art Equine Health Education Center was completed in Fall 2008 at a cost of nearly \$900,000. The building contains a surgical suite and medical treatment facilities for horses, providing valuable hands-on experience for students in MSU's veterinary technology program.



The \$15.6 million Space Science building opened in June 2009. This facility is home to the University's Department of Earth and Space Sciences which offers one of only five space science degrees in the U.S.

Sixteen classrooms in Rader Hall and three in Ginger Hall have been fully renovated and equipped with state-of-the-art technology tools. These renovations are part of an annual strategy to improve and standardize classroom technology resources.



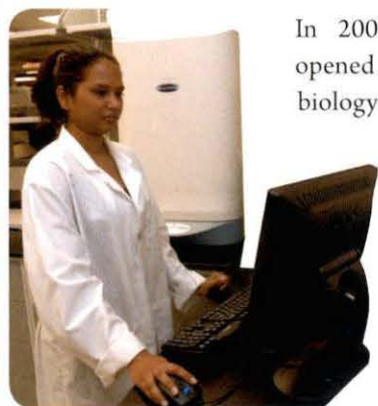
Air pollution control equipment was replaced at the University's heating plant at a cost of \$5.7 million and was the only capital project funded by the state on a university campus in 2008.

Construction is underway for the \$26 million Center for Health, Education and Research. This collaborative effort between MSU, St. Claire Regional Medical Center and the University of Kentucky will open for classes in Fall 2010.

An expansion of the existing Student Wellness Center was completed in 2008. This project added 3,000 square feet of space to the facility.

A \$10 million addition to the Adron Doran University Center and a partial renovation was completed in 2005. Initial programming has been completed for a \$52 million second phase to be presented to the General Assembly in 2010. Phase II would include an expansion on the east side of the building to provide additional space for student services as well as complete renovation to sections of the original building.

An Athletic Facilities Master Plan was finalized in 2006. The Plan provides a strategy for the systematic improvement or replacement of the University's athletic facilities as fund sources are identified.



In 2007, Morehead State University opened a state-of-the-art molecular biology core research laboratory to bolster scientific investigations in agriculture, biology, chemistry, environmental science, neuroscience, and psychology. Developed at a cost of more than \$800,000, the facility was funded from both public and private dollars

and named in honor of Dr. David Magrane, former department chair and retired Professor of Biology.

Technology Infrastructure

MSU implemented a new integrated campus Enterprise Resource Planning (ERP) system to replace the existing legacy system acquired in 1982. Migration of MSU's data and processes to Datatel's Colleague application started in 2005 and is scheduled to be completed in 2010. The five-year, \$5 million project is on schedule and under budget with primary funding coming from the U.S. Department of Education through the award of a Title III Improving Institutions Grant.

The campus telecommunications network was expanded to provide wireless service as well as access to Internet2 to support faculty research.

Human Infrastructure

A study was commissioned by MSU in 2006 to compare the salaries of staff employees with comparable positions in the job market. The study by Segal Inc. indicated that the staff compensation scale was 23 percent below market and resulted in a three-year plan to increase the classified staff salary scale. Two years of that plan were completed

before state budget issues forced a postponement of the third year. Work is ongoing to develop a similar multiyear strategy that will bring faculty salaries up to the average College and University Professional Association for Human Resources (CUPA) salary by rank and discipline. That plan will be presented for review prior to development of the 2010-11 budget process. The average MSU faculty all-ranks salary in 2008 was 87 percent of the average CUPA salary. This represents a slight increase over the 84 percent average earned by MSU faculty in 2005.

Working with Faculty Senate and Staff Congress, an administrator evaluation process has been reinstated. A survey based on an instrument developed by the Malcolm Baldrige National Quality Awards program was administered to MSU faculty and staff in 2006 and again in 2008. Programs to address areas identified for improvement from the survey results were implemented in 2007 and 2009. In 2008, 80 percent of MSU faculty and staff completing the campus administrative assessment survey indicated that some degree of improvement had been made in "campus communications" and 75 percent indicated that some degree of improvement had been made in "removing barriers to progress."

National searches were conducted to fill two cabinet vacancies and a new cabinet position for Chief Diversity Officer was created. Dr. Karla Hughes was appointed in 2007 as MSU's Provost and Vice President for Academic Affairs. James Shaw was appointed in 2008 as the Vice President for Development and Charles Holloway was appointed in 2009 as the University's Chief Diversity Officer.

In 2008, MSU merged the Division of University Relations and the Division of Development to create the Division of University Advancement, thereby eliminating a vice presidency. Within the new Division of University Advancement, the Kentucky Folk Art Center, Kentucky Center for Traditional Music and Morehead State Public Radio have been merged into a single administrative unit called Cultural Outreach, Preservation, and Education (COPE). The realignment is designed to facilitate greater efficiency through the sharing of staff, facilities, and expertise.

MSU established the President's Leadership Academy to meet one of the University's greatest challenges of constant renewal of its leadership capacity. To date, 35 persons have completed the Academy and 12 are currently participating in the yearlong comprehensive professional development program, which includes an internship assignment at the end of the year.

- 1 Kentucky Folk Arts Center
- 2 Campus Greenhouse
- 3 Reed Hall
- 4 Ky. Ctr. for Traditional Music
- 5 Lloyd Cassity Bldg.
- 6 Lappin Hall
- 7 Water Testing Laboratory
- 8 Combs Bldg.
- 9 Catholic Student Center
- 10 Oppenheimer House
- 11 Future Button Auditorium Expansion
- 12 Button Auditorium
- 13 President's Home
- 14 Cora Wilson Stewart Moonlight School
- 15 Adron Doran University Center
- 16 Admission Center
- 17 Chi Alpha Fellowship
- 18 Methodist Student Center
- 19 Little Bell Tower
- 20 Fields Hall
- 21 Camden-Carroll Library
- 22 Allie Young Hall
- 23 Howell-McDowell Admin. Bldg.
- 24 Ginger Hall
- 25 Rader Hall
- 26 Claypool-Young Art Bldg.
- 27 Baptist Student Union
- 28 Alumni Center
- 29 University Advancement
- 30 Honors House
- 31 Palmer Development House
- 32 Thompson Hall
- 33 Breckinridge Hall
- 34 West Mignon Hall
- 35 Mignon Tower
- 36 Mignon Hall
- 37 East Mignon Hall
- 38 Nunn Hall
- 39 Waterfield Hall
- 40 Alumni Tower
- 41 Baird Music Hall
- 42 Cooper Hall
- 43 Mays Hall
- 44 Cartmell Hall
- 45 Laughlin Health Bldg.
- 46 Wetherby Gymnasium
- 47 Rice Service Bldg.
- 48 Normal Hall
- 49 Butler Hall
- 50 Eagle Lake Apartments
- 51 Gilley Apartments
- 52 Academic-Athletic Center
- 53 Wellness Center
- 54 Jayne Stadium
- 55 Sadler Tennis Courts
- 56 Allen Field
- 57 University Softball Field
- 58 Downing Hall
- 59 Space Science Center
- 61 Center for Regional Engagement
- 62 Career Services Center
- 63 International Student Services



CENTER FOR HEALTH, EDUCATION & RESEARCH (CHER)
 This \$26 million facility, a collaborative effort between MSU, St. Claire Regional Medical Center and the University of Kentucky, will open in Fall 2010.

UNDER CONSTRUCTION

Regents approve strategic plan for 2006-10

Cheerleaders claim 21st national title

Robotics team finishes second in national competition

Completer programs help KCTCS grads get 4-year degrees

MSU students to design and build first state satellite

State funds \$27 million in facilities for health, space and equine sciences

Fifth outdoor sculpture unveiled, concourse named for Stephen Thorne



NUNN HALL
 As part of the Housing Master Plan, Nunn Hall underwent a \$5 million renovation and reopened in Fall 2009.

STUDENT REC CENTER
 Wilson and Regents Halls were razed to make room for the student planned and funded Campus Recreation Center which will open in 2011. A parking structure is also planned.
UNDER CONSTRUCTION

ALUMNI TOWER
 Continuing improvements laid out in the Housing Master Plan, Alumni Tower is currently undergoing a \$4.6 million renovation.

SPACE SCIENCE FACILITY
 This \$15.6 million state-of-the-art education and research facility opened in June 2010 and is home to one of only five space science degrees in the country.

MSU receives state funding for regional engagement activities

Students protest veto of recreation center, housing renovations

Eagle athletes win second Straight OVC Academic Achievement Award

MSU joins Kentucky Database, statewide computing grid

Students, faculty, staff volunteer for Hurricane Katrina cleanup

U.S. News & World Report puts MSU in top tier for 3rd year

Professor submits MSU's first patent application



Resource Enhancement

How will we maximize public and private revenue opportunities?

Declining state revenues over the past several years have forced a greater dependency on other revenue sources as state appropriations available for higher education have been reduced. The percentage of the total educational and general revenues that were allocated from state appropriations has decreased from 48.2 percent in 2005 to 41.6 percent in 2008. Morehead State University has focused initiatives to optimize revenue from other revenue sources including student tuition, private giving, and research and sponsored program awards.

In 2007-08, the Board approved the University's first Business Plan which was developed as a financial roadmap to guide MSU in its vision to "become the best public regional university in the South" as defined in its strategic plan vision. The Business Plan also defined what the University must do to fulfill its part in reaching the 2020 goals of the Commonwealth as defined by the Council on Postsecondary Education. MSU was the only University that had its Business Plan fully funded in the CPE's 2008-09 budget recommendation to the governor.

MSU managed a 7.2 percent reduction in state general funds from 2008 enacted appropriation to 2009 actual appropriation by developing a plan for implementing savings and cost containment strategies and reductions that considered the strategic priorities and core values of the institution.

MSU and other public universities were spared further major budget cuts by Gov. Steve Beshear and the General Assembly during the 2009 regular and special legislative sessions.

U.S. Rep. Hal Rogers listed five MSU projects totaling \$10.5 million in his earmark requests for the FY10 federal budget, far and away the most ever for MSU. Legislation passed by Congress to date has included funding for three of the five projects totaling \$2.5 million.

Alumni and friends gave MSU \$2.19 million in 2008-09 with 400 first-time donors and a 10 percent year-over-year increase in alumni participation.

2007

U.S. News & World Report ranks MSU among top schools in the South

Ground broken for Space Science facility

Dr. Karla Hughes appointed provost

Success Academy launched for underprepared freshmen

MSU leads community wellness project in Martin County

Molecular biology lab opens in Lappin Hall

Emergency handbook, outdoor alert system make campus even safer

MSU Development staff has taken the opportunity during the economic recession to focus staff resources on reconnecting with alumni and building a network of friends of MSU. A new alumni chapter established in Cincinnati is being used as a model for building a regional network of MSU graduates interested in furthering the principles and welfare of MSU and its alumni through service to the University, the community.


A \$1 million matching grant commitment from the Paul and Lucille Little Foundation was received in 2009 to support the Kentucky Center for Traditional Music and the "Classroom to the Community" program. The grant was matched by the state from the Regional University Excellence Trust Fund.




Private funds were raised in 2005 to purchase Eagle Trace Golf Course. The 18-hole course replaced operation of an existing 9-hole course and facilitated addressing a Title IX compliance issue by adding women's golf to MSU athletics. Course play and revenues continue to grow at Eagle Trace in spite of a tight economic climate.

MSU was gifted the Browning Orchard in 2008-09 to promote plant science education, research, and community stewardship. Currently, the 200+ acre orchard includes 17 varieties of apples, a variety of berries, four shrimp ponds, and open grass fields for hay production in Fleming and Lewis counties. The Browning Orchard was established in the 1920s by the Browning family and has been in fruit production for approximately 90 years. MSU will maintain apple/fruit production on-site and explore other educational and community engagement opportunities that enhance agriculture production in the region.

Acquisition of the former Abner Construction Company property north of I-64 for a warehouse facility to house Support Services will result in savings of more than \$1 million over the cost of building a new structure.

 As a result of a guaranteed energy saving performance contract completed in 2005, lighting in most campus buildings has been replaced with energy efficient fixtures at a cost of \$1.8 million, financed totally with energy savings.

 Golf carts and light-duty electric trucks have replaced gas-powered vehicles used by MSU police officers, facilities management staff and others for on-campus

transportation. This effort reduced both operating costs and MSU's carbon footprint.

In 2005, the strategic planning process at MSU identified a priority need to focus on increasing research opportunities for faculty. As a result, the position of associate vice president for research was established and after a national search, Dr. Bruce Mattingly was appointed to lead the unit. Under Dr. Mattingly's leadership, grants and contracts for instructional, research and public service projects increased from \$12.2 million in 2005 to \$16.5 million in 2008-09 with \$1.3 million still pending. The number of proposals submitted annually by faculty and staff have increased more than 16 percent since 2005. The percentage of proposals funded also increased from 72 percent in 2005 to 75.5 percent in 2008.

In Fall 2008, MSU implemented a modified per-credit-hour tuition model. The model differs from a standard per-credit-hour model by offering full-time students a significant discount for hours enrolled above 12. The model has resulted in a 17.2 percent reduction in dropped courses and an increase in net tuition revenue that would have required a 9 percent increase in tuition using the prior full-time tuition model. The model is now being considered for adoption by other Kentucky public comprehensive universities. The University was invited to present the model at the National Conference for Continuing Improvement in the summer of 2009.

Did you know . . .

- The University's Housing and Dining System Bonds were refinanced in 2008 to achieve a cash flow savings of nearly \$6 million over a 15-year period.
- The MSU Foundation funded projects totaling \$250,000 across the University to enhance excellence in 2008-09. Additionally, 373 scholarships valued at \$519,760 in private funds were awarded to MSU students.
- The percentage of grants and sponsored programs funded was 75.5 percent in 2008.
- The number of MSU alumni that can be contacted via e-mail has passed the 40 percent mark.
- The Call Center in University Advancement is a totally student-supervised and student-staffed operation and contacts 5,000 alumni, friends and prospective students annually.

MSU recognized as "community engaged" institution

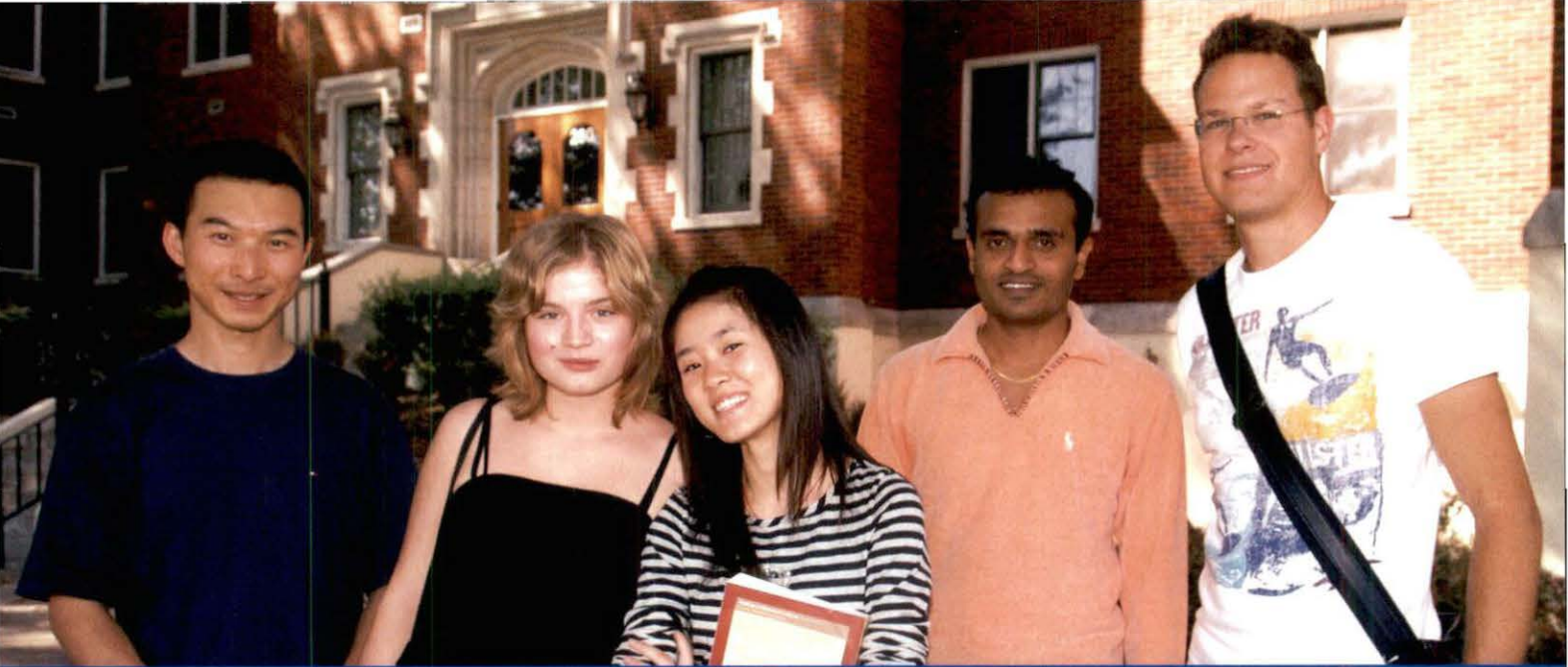
Eagle Trace Golf Course acquired by MSU

Most campus buildings get wireless Internet access

Eagle Access fills financial aid gap for neediest students

MSU assumes control of former UK technology center

Business plan developed to support strategic plan



Enrollment & Retention

How will we reach optimal student enrollment and retention goals?

A significant growth in enrollment will be required for Morehead State University to achieve the goals set for the institution by the Council on Postsecondary Education for baccalaureate degree productivity by the year 2020. With the number of traditional-age high school graduates within the service region declining, that growth must come from a combination of strategies that include recruitment initiatives for first-time freshmen, increasing the number of adult students from the region, increasing the number of KCTCS graduates interested in pursuing a four-year degree and improving the retention rate of all current students.

Following best practice research in the area of recruitment services, the Office of Enrollment Services was created in 2005 by merging the offices of Admissions and Financial Aid. A national search process resulted in the appointment of Jeffrey Liles as the new Assistant Vice President for Enrollment Services. In July 2009, the Office of Enrollment Services was moved to report with the Division of Academic Affairs to create stronger opportunities for collaboration with other academic support units.

Enrollment and retention strategies have been a primary focus at MSU since 2005 starting with development of a comprehensive Strategic Enrollment Management Plan. Focus areas in the plan included improvements in advising and academic program delivery, marketing and recruiting strategies, student services, admission standards, student financial aid programs, university processes and internal communications. Results from analyzing the data and following the strategies identified in the plan resulted in an increase

in the average ACT of the first-time freshman cohort group and significant improvement in the fall-to-fall retention rate of the first-time freshmen.

Morehead State has invested heavily throughout the region to partner with K-12 schools on strategies to increase the college-going rate of Kentucky high school graduates and



- 2008
- Recreation center, housing projects revived by legislature
 - Cheer squad wins another national title
 - President Andrews named to Southern Regional Education Board
 - Sylvia Lovely is first woman to chair Regents
 - Women's soccer takes OVC, advances to NCAA

improve college readiness. The number of students enrolled in a college-level course while still attending high school has increased from 266 in Fall 2005 to 446 in Fall 2008.

Morehead State revised its merit-based scholarship program in 2004 to be more competitive and attract Kentucky's best students. The response was a significant increase in the number of qualified applicants and an improvement in the retention rate of students receiving merit awards.

In addition to adjustments in merit-based awards, Morehead State implemented the Eagle Access Scholarship in 2005 to ensure that students with the greatest economic need attend the university at no cost. Students qualifying for the Eagle Access Scholarship are guaranteed the amount needed to cover any gaps in total cost of attendance at Morehead State and their federal, state or other financial assistance.

Resources have been reallocated to address needed improvements in the assistantship stipend available to qualifying graduate students who choose to further their education at Morehead State. The graduate stipend increased from \$6,000 in 2005 to \$10,000 in fall 2009.

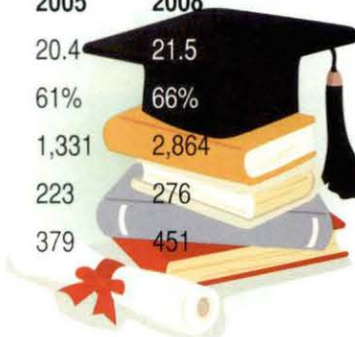
MSU hosted the Kentucky Governor's Scholars Program on campus for four consecutive years through 2009, which resulted in the enrollment of more than 173 top level students from across the state.

An enhanced marketing plan was developed based on the recommendation of a comprehensive market study conducted by STAMATS, a national marketing consulting firm.

MSU has implemented an e-Advising system that significantly increases tools available for advisors to assist students with multiyear course planning and minor degree completion. This system will also enable advisors to provide quality services to students who attend a regional campus or enroll in online programs. The course planning data collected within the new e-Advising system will facilitate more effective and efficient course scheduling.

FIRST-TIME FRESHMEN

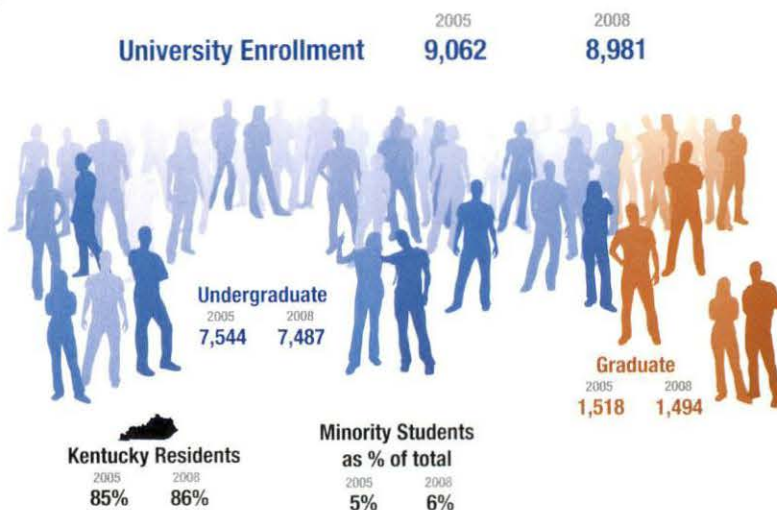
	2005	2008
Average ACT of FTFR	20.4	21.5
Fall-to-Fall Retention of FTFR	61%	66%
Online Enrollment	1,331	2,864
KCTCS Transfers	223	276
Total Transfers	379	451



An online retention alert system was implemented in 2008 that allows faculty and staff to note concerns about a student's attendance, academic performance, or behavior in a central location. This allows the appropriate advisor or student support specialist to follow up and intervene as necessary to help the student with academic or non-instructional issues that may be impacting the student's ability to be successful.

In 2007, MSU implemented the Summer Success Academy. This program provides new students, with at least two developmental needs based on their ACT scores, with the opportunity to attend a specially-designed five-week summer course to complete their mandatory remediation work prior to entering in the fall semester.

University Enrollment



MSU becomes first university to adopt per-credit-hour tuition

Top tier ranking maintained by U.S. News & World Report

UK rural physician track to include two years in Morehead

Ground broken for \$30 million Center for Health, Education and Research

MSU students help design first state satellite, NASA to launch in 2010

\$900,000 equine surgical center opens at Derrickson Complex

Record federal grant of \$10.1 million to support GEAR-UP

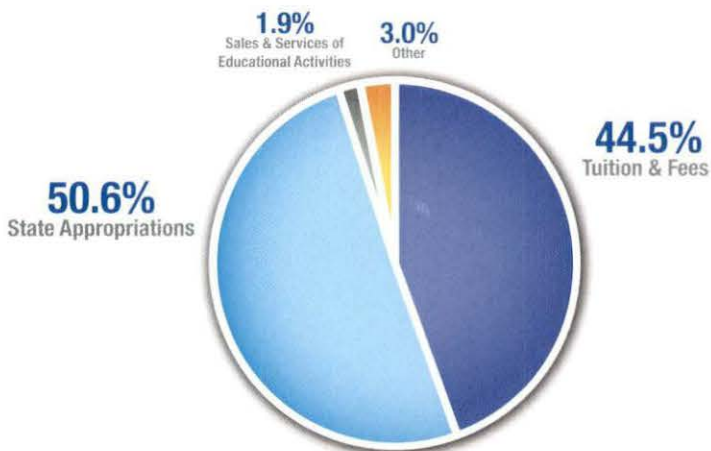
Dean Cathy Gunn appointed to education credentialing board

Financial Snapshot

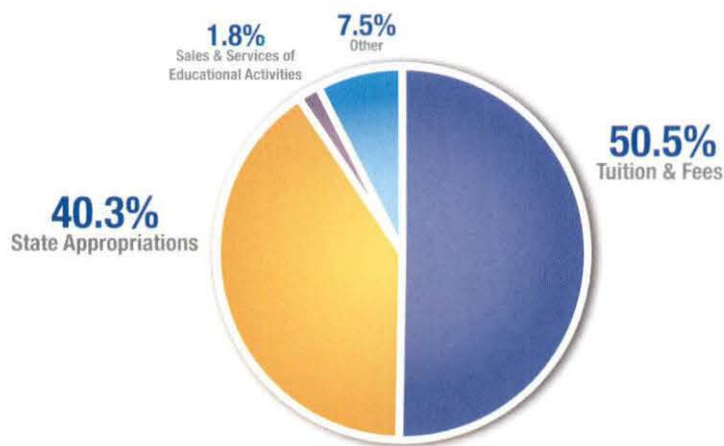
Morehead State University has experienced a dramatic shift in its financial profile since 2005 when the primary support for operations came from state appropriations which represented 50.5 percent of total educational and general revenues. In 2009-10, the primary support for revenue is budgeted from student tuition and fees at 50.5 percent with state appropriations falling to 40.3 percent of total educational and general revenues.

REVENUE SOURCES

FY 2005 Actual



FY 2010 Budget



EXPENDITURES

Instruction
2005 \$38,826,660

2008 \$42,534,399

Academic Support
2005 \$6,100,986

2008 \$9,093,984

Student Services
2005 \$7,473,233

2008 \$10,533,046

Student Financial Aid
2005 \$6,383,244

2008 \$12,381,708

Instructional Support
2005 \$10,968,075

2008 \$14,343,525

Operation and Maintenance
2005 \$6,383,244

2008 \$8,330,556

2009

MSU moves up in U.S. News & World Report rankings

Cheer squads bring home another national trophy

Coed marksman advances to NCAA small bore rifle tourney

Men's basketball wins OVC, first round in NCAA

Looking ahead.

Dear Friends of MSU,

We are nearing the end of the planning cycle covered by the current ASPIRE 2006-10 Strategic Plan. Significant progress has been made toward creating institutional efficiencies, implementing our strategic and business plans, and reviewing our academic programs for excellence. However, economic uncertainty presents one of the greatest challenges facing the University as we begin updating our strategic planning documents to guide us through the academic years 2010-14.

Our top priority will continue to be people . . . our students, our employees, and the communities we serve. First and foremost, this means doing all that we can to ensure that our students remain enrolled and are able to afford a quality, higher education. I have asked our faculty and staff to continue to maintain a positive attitude and strong work ethic in support of the University's growing momentum as our students deserve nothing less. In return, I have pledged that our administrative team will continue to lead with the following priorities:

- To remain focused on our institutional mission,
- To be directed by our mission and core values,
- To allocate resources in a strategic manner,
- To communicate with and solicit input from the entire University community, and
- To continue to maximize efficiency and effectiveness.

During these challenging times, I am uplifted by the strength, integrity, and character of the MSU community. In the upcoming years, we will celebrate the successes of the past and work to attain even greater levels of academic, artistic, and athletic achievement.

I invite each of you to take the opportunity to visit the campus when your schedule permits. You will be proud of the many wonderful things happening at your university.

Wayne D. Andrews
 Wayne D. Andrews
 President

John Merchant first African American elected to BOR leadership

Athletics receives unconditional NCAA re-certification

Numm Hall reopens after \$5 million renovation

Ground broken for \$24 million student recreation center

Alumni Tower goes offline for \$4.6 million facelift

Governor cuts ribbon on \$16.6 million Space Science facility

Record 102 students receive undergraduate fellowships

Remember your MSU
experience...

...help create theirs.



Where dreams take root
...and grow.

MAKE A DIFFERENCE. MAKE YOUR GIFT TODAY!
Online at moreheadstate.edu/giving or call toll-free at 1-877-690-GIVE

For tax purposes, give before December 31!

UNIVERSITY ADVANCEMENT • 150 UNIVERSITY BLVD, BOX 1887 • MOREHEAD, KY 40351



ALUMNI Philanthropy

Greg Threet CLASS OF 1994

Crawford and Company has named Ryan L. Curry of Ashland, an MSU sophomore finance major, as the third recipient of the **Greg Threet (94)** Memorial Scholarship.

Curry has been on the dean's list for three semesters and is pledged to the Phi Kappa Phi Honor Society. He has been involved in numerous community service activities and has received many awards and honors in high school and college. He was recommended for the \$2,500 annual scholarship by **Keith Moore (90)**, assistant to the dean of the College of Business and Public Affairs, and director of the MBA program.

The memorial scholarship was established to honor the memory of Threet, an assistant branch manager in Crawford's U.S. Property and Casualty office in Lexington. He died in an airline accident while traveling to Atlanta in 2006.

Belva Sammons CLASS OF 1972

In the last five years, the number of students with physical, sensory, psychological and learning disabilities registered with Morehead State University's Office of Disability Services has more than doubled. To provide equal access to a postsecondary education, the first MSU scholarship to specifically target and reward the academic attainments of those with physical and mental limitations was established earlier this year.

"The Belva Sammons Academic Scholarship for Students with Disabilities" as been established by friends and coworkers of the late MSU staff member.

A two-time graduate of MSU, Sammons earned a bachelor's degree in 1972 and a master's degree in education in 1976. She was a longtime University employee, who devoted her career to student services.

She began working at MSU in August 1974 as a student assistant in the residence halls. Subsequently, she served as director of Mignon Hall, coordinator of TRIO Special Services, academic counselor and coordinator of the Center for Academic Success, and director of the Center for Academic Services.

During her career, she supervised and worked closely with the Student Disability Services office. She retired from full-time service in July 2005.

To be eligible for the scholarship, interested students must:

- Submit a completed MSU Scholarship Application Form. Two letters of endorsement must accompany the scholarship application.
- Complete at least one academic year at MSU and have attained a minimum cumulative 2.80 GPA (using only MSU credits).

The Belva Sammons Scholarship Committee will select a suggested recipient and an alternate recipient of the award. The recommendations will then be submitted to the MSU Office of Financial Aid for the final selection to be approved by the MSU Scholarship Committee.

Applicants must accept scholarship monies with the understanding that it is not automatically renewable and that reapplication is necessary in subsequent years.



It's Dr. Hall now

Billy Joe Hall (57) is a 38-year veteran of the financial services industry in Mt. Sterling where he is an investment adviser at LPL Financial Services. He was formerly chair of the board, president and CEO of the Mt. Sterling National Bank before entering the securities business in 1982.

A leader in state and local civic affairs, Hall is a former chair of the board of trustees of the Kentucky Employees Retirement System. He has served on three university boards, including MSU from 1979-82, as well as the Kentucky Council on Higher Education. He is a two-time graduate of MSU where he was inducted into the Alumni Hall of Fame in 1967.

He was presented an honorary Doctor of Laws degree from Anderson (Ind.) University during spring commencement. Hall has been a member of the AU Board of Trustees since 1981.



Lee named a 'distinguished barrister'

Nathaniel Lee (77), senior partner with the Lee, Cossell, Kuehn & Love LLP Indianapolis law firm, has been honored as a "distinguished barrister" for the State of Indiana. The award, presented by the Indiana Lawyer's Leadership in Law Series, honors lawyers whose leadership, both in the profession and in their community activities, have been exemplary and had significant impact over the course of their careers.

He was one of 15 veteran Indiana attorneys selected from approximately 100 nominated from across the state this year.

After Hurricane Katrina struck in 2005, Lee helped develop and sponsor legal education programs to assist hurricane victims and traveled south to do volunteer work. He hired a displaced lawyer and helped her get a temporary license to practice in Indiana.

In his community, Lee is a mentor and serves on more than 20 community boards and various committees for the Marion County, Indianapolis and National bar associations. He has chaired the National Bar Association's Legal Education Committee for seven years and has encouraged his own employees' to attend law school and supported the efforts of other lawyers.

He created the Lee Foundation to provide Christmas gifts, which included more than 400 children last year, and other assistance to families throughout the year. Lee works with local high schools to increase minority college attendance.

In his practice, he focuses on major personal injury or death claims, medical negligence, defective products and police misconduct. He has litigated more than 150 jury trials and obtained several million dollar verdicts.

After earning bachelor's and master's degrees from MSU, he completed a J.D. degree from the University of Georgia's School of Law. He has been selected for inclusion in "Super Lawyer" for the State of Indiana from 2005-09.

Lee and his wife, **Carmen (78)**, an education major, are the parents of two, Jennifer and Joshua.



Web site for female athletes launched

Margaret "Peg" Hofmann-Nein (83) has spent her entire career in the athletic and fitness industries, establishing herself as a leader and expert on issues facing the female athlete. In her latest venture, she has launched the first ever Web site (www.femaleathletesfirst.com) to serve the needs of the female athlete and help them prevent injury. She has created the "home" for female athletes on the Web.

Hofmann-Nein, owner and president of Female Athletes First (FAF), is committed to educating and providing proper strength programs to female athletes around the globe. She touches hundreds of female athletes each month from at least 12 different countries with her site.

She believes female athletes are still not getting the right strength and conditioning information to excel in their sport and prevent injury. "Girls typically don't start early enough on a strength training program, don't adhere to it over a long period of time and are not taught how to perform the exercises correctly," Hofmann-Nein explained. She hopes to change these trends.

Lavy participates in inaugural ceremonies

Tech. Sgt. Nathan E. "Nate" Lavy (97) was there for the historical day when Barack Obama was inaugurated as president in January. The 11-year veteran is a percussionist with the United States Air Force Ceremonial Brass, stationed at Bolling Air Force Base in Washington, D.C.

This marked the second time that he had participated in an inauguration with the Air Force Band; this year, he performed in the Inaugural Parade and at the Inaugural Youth Ball.

"It was probably the biggest event I will ever participate in," he said.

"I have never seen such a mass of humanity. The streets were wall-to-wall people as far as the eye could see as the crowd walked toward Maryland and Virginia. During the parade, we played the traditional salute of the Air Force song at the Presidential reviewing stand where we could see the President, Vice President and their families. The ball was pretty amazing; it was a packed house and we shared the stage with Fall Out Boy, Kid Rock and Kanye West. The energy of the crowd was incredible as we played some pre-ceremony music, and they were even more excited when we played 'Hail to the Chief.' After President



Obama gave a short speech, we played 'At Last' as the first couple danced, and then they left to travel to their next seven inaugural balls, and we headed home.

Performing at historical occasions is just part of Sgt. Lavy's job. Since becoming a member of the Ceremonial Brass in 2004, he has provided entertainment for various engagements in the D.C.-area, including White House ceremonies, arrivals of foreign dignitaries and heads of state, retirements, funerals at Arlington National Cemetery and parades. As a percussionist, he plays primarily marching and concert instruments on a daily basis.

After graduating from MSU with a degree in music education, he entered the Air Force. The first six years of his career was spent with

the Air Force Band of Flight in Dayton, Ohio. He has traveled extensively, including two Middle East tours.

Sgt. Lavy met his future wife, the former **Jennifer Davis (96)**, when they were members of the MSU Marching Band. An interior design major, she has worked in both residential and commercial interior design. Recently, she left a position as architecture and design associate with Teknion furniture to return to school and pursue a nursing degree.

Ultimately, she hopes to become a labor and delivery nurse, and possibly a midwife.

For his success in music, Sgt. Lavy does not hesitate to recommend Morehead State's music program and credits **Frank Oddis (74)**, associate professor of music, for being a huge influence. "He taught me so much about music and life," he said. "I learned, sometimes the hard way, that preparation was the most important skill a musician could have, and that you can always learn something new, even from an unexpected source. I think that Frank does a great job of preparing his students to be well-rounded musicians."

The Lavys live in Silver Spring, Md., with their two children: Ella, 5, and Henry, 2.

Alumni successful in postgraduate work

Jason Batts (05) has completed his second year of law school at Washington University in St. Louis where his wife, the former **Tonia Stroud (06)**, has finished her second year of optometry school at the University of Missouri-St. Louis.

After finishing school at MSU, the Batts worked in Washington, D.C., as congressional staff members before moving to the Ft. Lauderdale, Fla., area to enroll in their respective programs. After one year, they decided to move closer to their hometown in western Kentucky to increase their job prospects after graduation.

At WU, Jason "wrote on" to the Law Review and was eligible to interview for positions on the executive board. He was not going to apply for editor-in-chief; however, after being told that "transfer students never get selected for that," he changed his mind. He is now the first transfer student to hold that post. He credits the faculty members, especially

Dr. Yvonne Baldwin (81), former chair of the Department of Geography, Government and History, for encouraging him to apply for the internship, which helped him land the Capitol Hill position and assisted him in getting admitted to law school.

Tonia has been named the national liaison to the American Optometric Association's Political Action Committee and recently completed a medical mission trip to Jamaica.



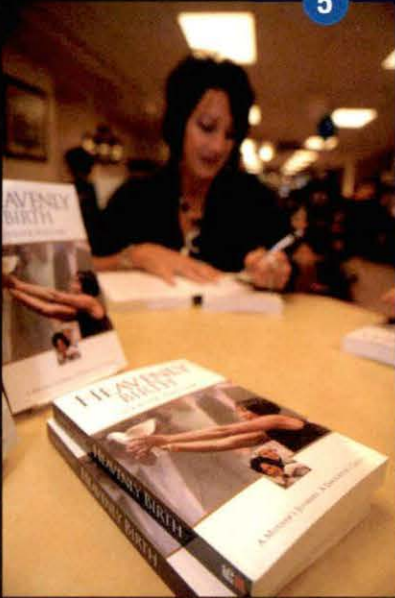
MOREHEAD STATE UNIVERSITY HOMECOMING

OCTOBER 22-24, 2009

1. President Wayne D. Andrews directs the MSU Marching Band.
2. Alumni Hall of Fame inductees, from left, **Jay Flippin (70)**, **Dr. Langston D. Smith (69)**, Dr. Wayne Andrews, and **Dr. David Adair (86)**
3. MSU alumni reminisce at a reunion.
4. Homecoming Queen, Dustin Withrow of Grayson, and Homecoming King, Glenn Means III of Mt. Sterling (Photo by Amy Wallen)
5. Alumna **Denise Taylor (88)** signs copies of her new book, "Heavenly Birth."
6. Alumni in Classroom
7. MSU participates in Samaritan's Feet.
8. Eagle Football celebrates a touchdown.
9. Dr. Langston Smith talks with students during Alumni in the Classroom.
10. Memorial Brick Ceremony honors those who have served MSU.



5



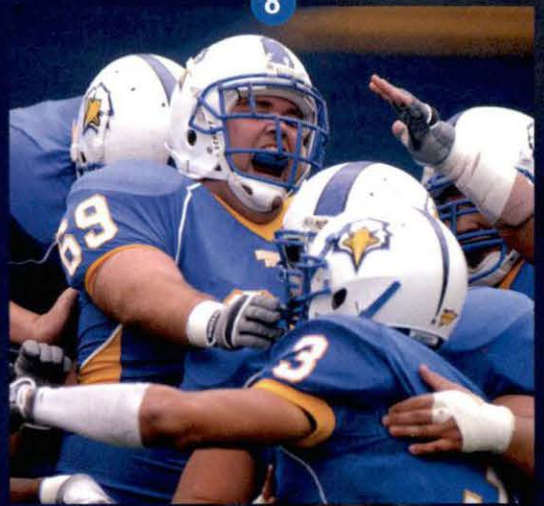
6



7



8



9



10



FRIENDS

Patrick named first chief of staff



President Wayne D. Andrews has named **Beth G. Patrick (82)** MSU's first chief of staff. She will continue as vice president for planning and budgets.

"I am pleased to appoint Ms. Patrick to this important position as we implement a new administrative model for the Cabinet," said Dr. Andrews. "Her superb organizational skills and

broad knowledge of the institution will be most helpful in coordinating the work of our senior leadership team."

Patrick's new duties include serving as the President's liaison with community, business and government, dealing with a range of institutional, Board of Regents, and public affairs issues, and coordinating the activities of the President's Cabinet in the development and implementation of strategic initiatives.

Since February 2003, Patrick was vice president for budgets, planning and technology. She joined the MSU staff in 1983 as a computer programmer/analyst in the Office of Computing Services.

A Russell native, Patrick earned a bachelor's degree with an option in data processing and a master's degree in adult and higher education in 1997 from MSU. She is active in various professional organizations and committees and serves as a board member at St. Claire Regional Medical Center and the Morehead Community Federal Credit Union.

Michael R. Walters (70), vice president for administration and fiscal services, will assume Patrick's former responsibility for technology in addition to his current administrative duties.

He earned a bachelor's degree in accounting and a master's degree in business administration. He is a certified public accountant.

Walters has served in various positions since joining the University staff in 1978 and was appointed to his current post of vice president for administration and fiscal services in 2003. He currently serves as the treasurer of the Board of Regents and as a board member and treasurer of the MSU Foundation Inc.

Dr. Wells honored for service



Dr. Randall Wells (60), MSU professor emeritus, was honored posthumously by his Alma Mater with the 2009 Founders Day Award for University Service during the 2009 Homecoming activities.

Dr. Wells' wife, **Sue Shackelford Wells (63)**, a retired faculty member, accepted the award.

The Auxier native, who passed away in November 2006, was a two-time graduate of MSU, where he earned a bachelor's degree with a double major in music, vocal and instrumental, and the Master of Arts in education degree. He continued his education at Union Graduate School, earning the Doctor of Philosophy degree in 1975.

Dr. Wells began his career as band director at Morehead High School. At MSU, where he was on the faculty from 1968-93, he rose to the rank of professor of education. He directed two federal programs in the early 1970s that enabled nontraditional students to enroll in protected courses while serving as teacher aides in the public schools and eventually earning teaching certificates. He taught undergraduate and graduate classes and supervised numerous student teachers.



Future Eagle in your family?

Share your baby announcement with the Alumni Association and we'll mail a "Future Eagle" baby bib to celebrate your newest family member! This is open to both parents and grandparents that are MSU alumni!

To request a bib, send an e-mail to alumni@moreheadstate.edu with "Future Eagle" as the subject line.

Emily Jane Wilson, daughter of Sarah Johnson Wilson (99) and Steve Wilson (95).

MSU grad is Teacher of the Year

Durrell "Butch" Hamm (81) of Florence, a 24-year teaching veteran, is the 2010 Kentucky Teacher of the Year.

He was honored with the 2010 Ashland Inc. Teacher Achievement Award in a presentation made by Gov. Steve Beshear with representatives from the Department of Education and Ashland Chairman and CEO Jim O'Brien. He was awarded \$10,000 and will represent the state in the 2010 National Teacher of the Year competition.

"I am so honored by this award," Hamm said. "There are so many wonderful gifted teachers out there; it humbles me to receive this recognition."

A number of MSU graduates have excelled in the education field. Billie Ann Travis (80) was named the 2005 Kentucky Teacher of the Year.

Hamm is an English and communications teacher at Larry A. Ryle High School in Union where he has taught for four years. He also teaches for Northern Kentucky University and Gateway Community and Technical College.

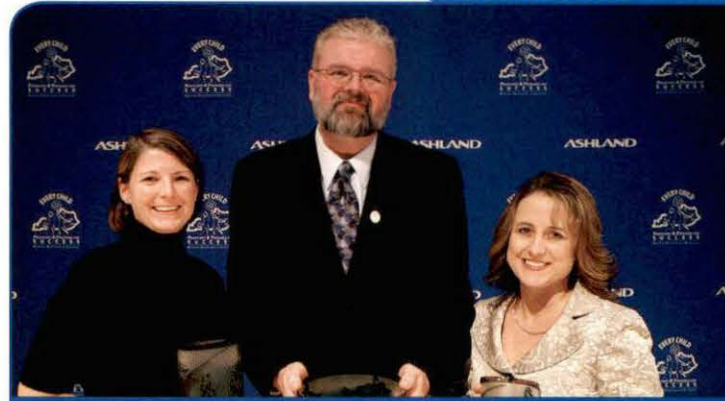
He is a leader of the 11th-grade Instructional Learning Team and has been a Kentucky Teacher Internship Program (KTIP) resource teacher. In addition, he won six consecutive state championships as the debate coach at Boone County High School

and assists the Ryle coach where the team has had two consecutive wins, received a Kentucky Distinguished Teacher Award from the Presidential Scholars and U.S. Department of Education, and an Excellence in Teaching Award from Campbellsville University.

He is a member of the American Library Association, American Association of School Librarians, National Council of Teachers of English, and the national, Kentucky and Boone County education associations.

At MSU, he was active in speech, debate and theatre arts as a student and was a full-time communications instructor for two years.

"I loved my years at Morehead and I am very proud to tell both my students and the community alike about the wonderful education MSU offers. I have fond memories and adored so many wonderful educators that I could call mentors and colleagues." Not wanting to leave anyone out, he offered to name a few: the late Harlen Hamm (64), Dr. Bill Layne (62), Sylvia Layne (63), Dr. Larry Albert, Dr. Jack Wilson and Diane Cox (70).



Elementary Teacher of the Year, Jane Vaughn Horn, left, Butch Hamm and Middle School Teacher of the Year, Melissa Evans

Hamm is a two-time graduate of MSU where he earned bachelor's and master's degrees; then he received a library media services certification at Marshall University; and a Rank 1 certification in rhetoric and communications from Wayne State University.

Education is a lifelong process. This was evident from what Hamm wrote in the teaching philosophy portion of the nomination form for the Kentucky Teacher of the Year award.

"I once read, 'Any good teacher remains a good student throughout life.' When someone asks me if I like teaching, I say to them, 'I like learning!' for every day is a learning experience in my life. What may be an epiphany for me, may be an everyday understanding for my students," he wrote.

The Morehead State University family remembers . . .

Michael J. Hinton	ND	Roscoe E. Stephens	1963	Dennis S. Sandlin	1973
Dr. Jerry Howell	ND	Karen R. Cline Stevens	1965	Leonard Q. Coulter	1974
Ron Klimkowski	ND	Larry E. Brown	1966	Alfred Watts	1974
Dr. S. Mont Whitson	ND	David W. West	1966	Kenneth E. Jones	1979
Lawrence M. Carter	1938	Harold G. Slone	1967	Jeffrey G. Burkett	1977
Yevive Creech McMillian	1941	Linda K. McIntyre Donovan	1968	Victoria L. Knock McLane	1977
Dewey Greear	1949	Herston L. Stewart	1968	Gary M. Browning	1980
Carl A. Cassity	1950	David C. Baldwin	1969	Marianne Kapnas Edwards	1980
Phyllis H. Carter	1951	James A. Letcher	1969	Kathy Whisman Emmons	1981
Paul J. Reynolds	1951	Catherine J. Tarbill Ramey	1969	Retha Lowe Pursel	1984
Rushie Preston	1953	David J. Garofold	1970	Jack W. Scalf	1987
Erma R. Fitzpatrick Pack	1954	Stanley C. Ferguson	1971	Donna J. Hatton Smedley	1989
Charles W. Ellis	1956	Genevieve R. Hayes	1972	Peggy E. Musser	1991
Russell D. Spaulding	1957	Patsy S. Wright	1972	Bonnie A. Jett	1995
Otto Ingram	1961	William M. Huffaker	1973	Sarah A. Blanton	2009

To make a gift in memory of one or more of these individuals, please call the Office of Development at (877) 690-GIVE.

ND = Non-degree

Teater Ready To Tee Off on PGA Tour



After honing his skills on the golf links of Eastern Kentucky, former Morehead State golf standout **Josh Teater (01)** has found his way to the highest level of the sport. Teater earned his PGA Tour card by finishing seventh on the Nationwide Tour this past season. His Nationwide season included 11 top five finishes and a win at the Utah Championship.

Teater now has the opportunity to face the world's best golfers during next year's PGA tour which begins with the SBS Championship, January 4, in Kapalua, Hawaii.

For Teater, earning a spot on the PGA Tour became a major goal even before his days as a member of the Eagle golf team.

"[Earning my tour card] is something I've strived for since the end of high school when I decided to play golf in college, so I'm extremely pleased. It's going to be a lot of fun and I'm looking forward to the challenge of playing with the world's best," stated Teater.

The Danville, Ky., native credits his time at MSU as integral to the development of his golf game.

"Morehead is a great place to go to college. It's small and it allows a person to really focus on the things that are important to them. I don't think you have some of the distractions that you might find at some of the bigger schools."

Although being on the tour brings some added perks to his everyday routine, Teater knows it is the same game on the course.

"Being on tour has a lot that comes with it off the course. You get some nicer perks, like courtesy cars and things like that,

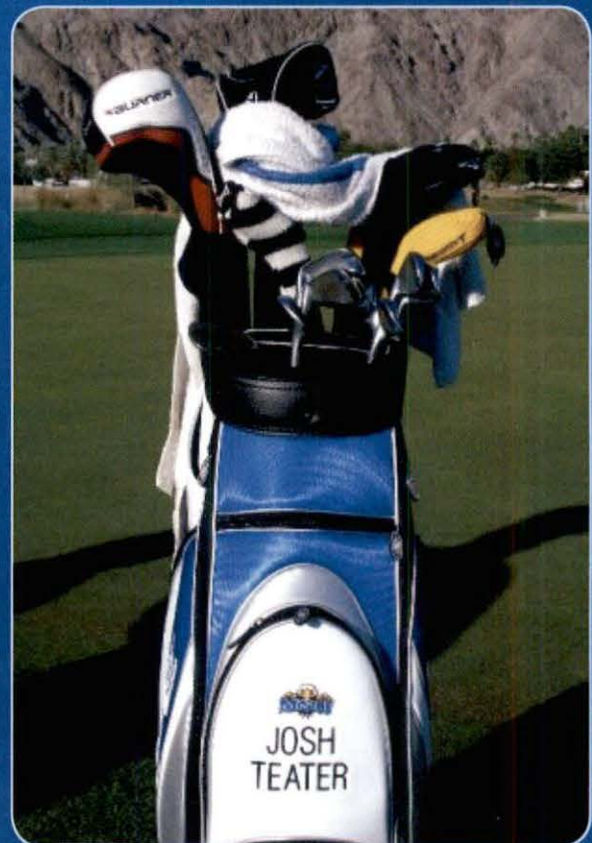
which will be nice. On the course, it's still the same game. I have to play my style of golf and play the way I know how to play. I'm not going to let what other people do affect what I do. I am going to approach things the same way as I approached things on the Nationwide Tour."

Longtime Morehead State golf coach **Rex Chaney (57)** remembers Teater as a great worker during his time at MSU.

"Josh, first of all, was a good student of the game and a studious worker. He probably grew as much during his time in Morehead, both in golf and academics, as any player I've ever had."

Chaney foresees a bright future ahead for Teater as he embarks on his first season on the PGA Tour.

"Josh will grow as he plays on the tour, but he's ready for it and he's worked hard for it. He has an understanding of the game and he will be quite successful in my opinion. He has the ability to focus and has a quiet aggression that a good player needs to make things happen."



**MSU fans can follow
Teater's inaugural season on
pgatour.com and MSUEagles.com.**

MOREHEAD STATE EAGLES

MENS BASKETBALL

Dec. 3	at Tennessee-Martin*	Martin, Tn.	8 p.m.
Dec. 5	at Murray State*	Murray, Ky.	7:30 p.m.
DEC. 15	ST. CATHARINE'S	MOREHEAD, KY.	NOON
DEC. 18	EAST TENNESSEE STATE	MOREHEAD, KY.	7:45 P.M.
Dec. 21	at Utah State	Logan, Ut.	10 p.m.
Dec. 22	vs. Weber State	Logan, Ut.	7:30 p.m.
Dec. 23	vs. Cal State Fullerton	Logan, Ut.	7:30 p.m.
Dec. 28	at South Dakota	Vermillion, Sd.	8 p.m.
JAN. 2	AUSTIN PEAY**	MOREHEAD, KY.	7:30 P.M.
JAN. 4	TENNESSEE STATE*	MOREHEAD, KY.	7:30 P.M.
Jan. 7	at Tennessee Tech*	Cookeville, Tn.	6:30 p.m.
Jan. 9	at Jacksonville State*	Jacksonville, Al.	5:30 p.m.
JAN. 14	SOUTHEAST MISSOURI*	MOREHEAD, KY.	7:30 P.M.
JAN. 16	EASTERN ILLINOIS*	MOREHEAD, KY.	4:30 P.M.
JAN. 19	SIU-EDWARDSVILLE#	MOREHEAD, KY.	7 P.M.
Jan. 23	at Eastern Kentucky*	Richmond, Ky.	7 p.m.
Jan. 28	at Tennessee State*	Nashville, Tn.	8:30 p.m.
Jan. 30	at Austin Peay*	Clarksville, Tn.	8:30 p.m.
FEB. 4	JACKSONVILLE STATE*	MOREHEAD, KY.	7:30 P.M.
FEB. 6	TENNESSEE TECH*#	MOREHEAD, KY.	8 P.M.
Feb. 11	at Eastern Illinois**	Charleston, Il.	8:30 p.m.
Feb. 13	at Southeast Missouri*	Cape Girardeau, Mo.	8:45 p.m.
FEB. 17	EASTERN KENTUCKY*#	MOREHEAD, KY.	7 P.M.
Feb. 20	at ESPNU Bracket Buster Saturday	TBA	TBA
FEB. 25	MURRAY STATE*#	MOREHEAD, KY.	8 P.M.
FEB. 27	TENNESSEE-MARTIN*	MOREHEAD, KY.	7:30 P.M.

WOMENS BASKETBALL

Dec. 3	at UT Martin*	Martin, Tn.	6:30 p.m.
Dec. 5	at Murray State*	Murray, Ky.	6:15 p.m.
DEC. 13	DETROIT MERCY	MOREHEAD, KY.	2 P.M.
DEC. 14	KENTUCKY CHRISTIAN	MOREHEAD, KY.	7 P.M.
DEC. 18	MARSHALL	MOREHEAD, KY.	5:30 P.M.
Dec. 20	at Robert Morris	Moon Township, Pa.	5 p.m.
DEC. 29	TOLEDO	MOREHEAD, KY.	7 P.M.
JAN. 2	AUSTIN PEAY* (ESPNU)	MOREHEAD, KY.	6:30 P.M.
JAN. 4	TENNESSEE STATE*	MOREHEAD, KY.	5 P.M.
Jan. 7	at Tennessee Tech*	Cookeville, Tn.	6:30 p.m.
Jan. 9	at Jacksonville State*	Jacksonville, Al.	6:15 p.m.
JAN. 14	SOUTHEAST MISSOURI*	MOREHEAD, KY.	5:15 P.M.
JAN. 16	EASTERN ILLINOIS*	MOREHEAD, KY.	2 P.M.
Jan. 23	at Eastern Kentucky	Richmond, Ky.	4 p.m.
Jan. 28	at Tennessee State*	Nashville, Tn.	6:30 p.m.
Jan. 30	at Austin Peay*	Clarksville, Tn.	6:15 p.m.
FEB. 4	JACKSONVILLE STATE*	MOREHEAD, KY.	5:15 P.M.
FEB. 6	TENNESSEE TECH*	MOREHEAD, KY.	5:15 P.M.
Feb. 11	at Eastern Illinois*	Charleston, Il.	6 p.m.
Feb. 13	Southeast Missouri*	Cape Girardeau, Mo.	6:30 p.m.
FEB. 20	EASTERN KENTUCKY*	MOREHEAD, KY.	2 P.M.
FEB. 25	MURRAY STATE*	MOREHEAD, KY.	5:15 P.M.
FEB. 27	UT MARTIN*	MOREHEAD, KY.	5:15 P.M.
March 2, 5-6	OVC Tournament		TBA

* Denotes OVC Game
 ^ Denotes MSU Invitational
 # Denotes Longwood Invitational

OHIO VALLEY CONFERENCE CHAMPIONSHIP

Mar. 2	OVC Tournament Quarterfinals	Home Sites of Higher Seeds	TBA
Mar. 5	OVC Tournament Semifinals	Nashville, Tn.	TBA
Mar. 6	OVC Tournament Finals	Nashville, Tn.	TBA

OVC Game
 # Wazoo Sports Television
 ESPN U

WWW.MSUEAGLES.COM

Ticket information is available online or by calling (606) 783-2386.

Single Game Reserved: \$10

Single Game General Admission:

\$7 (Women's) • \$9 (Men's)

Children (2-12) \$3

All times eastern and subject to change.

CLASSNOTES

1970s



Craig A. Morris (77) is an assistant principal at Miamisburg (Ohio) High School where he has been for 16 years. A former Eagle basketball player, he was an assistant coach at MSU (1983-87), Murray State (1989-91) and University of South Carolina (1991-93). He and his wife have two adult children, Kelli Jo and Kyle Bradley.

The Rev. Richard Roehrig (77) is a Catholic priest with the Society of St. Paul. He celebrated his 25th Anniversary of Ordination in November. The Pauline priests use the media to communicate the gospel message through books, magazines, CDs, DVDs, TV-Radio, Internet, etc. He is marketing director for St. Paul's Alba House Publishing in Staten Island, N.Y.

1980s

Gary Arthur (83) has been elected to the NACS board of directors from the San Antonio area and will serve as a member of the association's legislative

committee. He is senior vice president of Valero Energy Corp. and president of Valero Retail Holdings Inc. In this role, he oversees all activities related to the company's nearly 1,000 stores. He joined Valero in 2000 as vice president of marketing, supply and transportation and has overseen the company's retail business since then. Arthur has more than 31 years of experience in marketing, supply and trading, transportation and retail. He spent nearly 20 years with Ashland Inc. and was with Colonial Industries before joining Valero. Arthur and his wife are parents of two children, Myra and Adam.

1990s



Natalie Hughes Keller (95), a registered dietitian, is self-employed and consults with long-term care facilities through her business, Keller Dietary Consultants Inc. She has consulted with CRS One Source, a locally-owned food service distributor in Owensboro, for the last 12 years. She recently stepped back into the acute care setting and works part time as a clinical dietitian at Owensboro Medical Health System. Keller was

named the 2000 Kentucky Dietetic Association's "Emerging Dietetic Leader." She is an alumnus of Delta Tau chapter of Kappa Delta sorority.

Her husband, **Eric Keller (96)**, is senior director of technical services at Hines Group in Owensboro.



Dr. Leslie Perry Collins (98) has completed the Doctor of Physical Therapy degree at the University of Kentucky and is a practicing licensed physical therapist. In October, she married Daniel Glenn Collins, co-owner and manager of Locust Bend Farm in May's Lick, where they live. She received a bachelor's degree in psychology and a master's degree in adult and higher education from MSU; he earned a bachelor's degree from UK.

2000s

Kyle Hankins (06) is an assistant men's basketball coach at Centre College. For the past two seasons, he had been an assistant at Kentucky Wesleyan College where the Panthers went 43-17 and twice qualified for the

NCAA Division II tournament. Hankins was a four-year letterwinner at MSU where he helped the Eagles to the 2003 Ohio Valley Conference regular-season championship.



Jennifer Crisp (03) of Prestonsburg, transfer/adult/GED enrollment services counselor, is among 10 Kentuckians selected and commissioned by Alltech to serve as ambassadors and represent the company and support the FEI World Equestrian Games 2010™ and other initiatives such as the Alltech Fortnight Festival.

Also selected as an ambassador was **John McGlone (90)** of Ashland, director of public relations at Ashland Community and Technical College.

The ambassadors represent each of Kentucky's congressional districts. During the next year, they will garner interest and enthusiasm in the World Equestrian Games and Fortnight Festival, while telling the story of the global animal health and nutrition company behind the events.

WHAT'S NEW WITH YOU? Fill out the form below or e-mail statement@moreheadstate.edu.

Name: _____
 SSN (optional): _____ Class: _____
 Address: _____
 City: _____ State: _____ Zip: _____
 Home Phone: _____ Business Phone: _____
 E-mail: _____
 Name of firm/company: _____
 Your title/position: _____
 Business address: _____

Spouse _____ Class (if alumni): _____
 Children (Include names and ages): _____
 (Class of MSU graduate children): _____
 Spouse's firm/company: _____
 Title/position: _____
 Business address: _____
 Phone: _____ E-mail: _____

SEND US YOUR PHOTO!

(For digital photos, please send high-resolution images in .jpg format to statement@moreheadstate.edu.)

Please fill out and return to: Alumni Association • Morehead State University • Alumni Center • 150 University Boulevard • Morehead, KY 40351 or e-mail statement@moreheadstate.edu



MOREHEAD STATE

Named for the SIXTH year in a row as one of the top public universities in the South.

Affordable, quality education in a safe environment.

More than just a number... student-faculty ratio of 16-1! People know you by name.

Graduates are accepted into professional schools at rates above state and national averages!

Surveys show MSU faculty are ranked higher for mentoring students than at other state schools.

Sixteen sports and national championship cheerleaders. Lots of student organizations.

Beautiful campus...lots of green space and a lake!

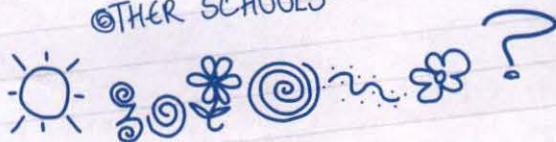
One of five space science programs in the country.

Arts, theatre, dance and music opportunities.

Successful alumni like Phil Simms and Chuck Woolery (not to mention senators, representatives, doctors, lawyers, teachers, entrepreneurs).



OTHER SCHOOLS



Where dreams take root...and grow.



Register for Open House on February 27 or March 27 to learn why MSU should be your top choice!

For more information, call 1-800-585-6781. www.moreheadstate.edu

MSU is an affirmative action, equal opportunity, educational institution.

CALENDAR

JANUARY 11

Spring classes begin! Register online at www.moreheadstate.edu!

JANUARY 18

Martin Luther King, Jr. Day No classes or office hours.

FEBRUARY 27

Open House for Prospective Students & Families www.moreheadstate.edu/openhouse

MARCH 27

Open House for Prospective Students & Families www.moreheadstate.edu/openhouse

APRIL 19 -24

Spring Celebration Including Celebration of Student Scholarship and University Gala

MAY 8

Spring Commencement

OCTOBER 28 - 30

Homecoming 2010 www.moreheadstate.edu/advancement

For a complete list of events at MSU, visit www.moreheadstate.edu/calendars.

Don't forget to sign up for eSTATEMENT

to receive monthly updates on MSU news & events. (alumni@moreheadstate.edu)



Not a member? Join today! www.moreheadstate.edu/alumni



OFFICE OF UNIVERSITY ADVANCEMENT
ALUMNI CENTER
150 UNIVERSITY BLVD.
MOREHEAD, KY 40351

Ms. April Nutter
Communications & Marketing
AYH 14

