

# The Morehead Independent

UNIVERSITY OF KENTUCKY LIBRARY

VOLUME II MOREHEAD, KENTUCKY, THURSDAY SEPTEMBER 26, 1935 NUMBER 36

## POLICE BULLET PROVES FATAL TOELLIOTT MAN

Charlie Crum Dies in Lexington Hospital; Patrolman Hall Under Gun in Case

### EXAMINING TRIAL FRIDAY

Charles Crum, of Ordinary, Elliott County, died last week in the Good Samaritan Hospital of Lexington, from gunshot wounds inflicted 2 weeks ago by patrolman Ed Hall who attempted to arrest him.

## Politics Business

THE UPTURN: Morehead business houses have just gone through two of the poorest business months that this small city has experienced in many a year.

### CITY POLITICS:

The city election this year is very apt to overshadow all other races, with the possible exception of the Governor's fight.

### COURTHOUSE:

The Fiscal Court has in its budget an appropriation for janitor service of the courthouse.

### REGISTRATION FEES:

Every state institution has its tuition fees each year.

## Lee Clay Company Strike Settled Peaceably By Union

A majority of the members of the local union of the United Brick and Clay Workers of America, at the Lee-Clay Products Co., Clearfield, Saturday voted to accept the terms offered by the company officials.

## AMATEUR HOUR ON OCTOBER 1ST

### Women's Club Sponsors Event On Terrace Gardens

Morehead's first amateur hour, presenting an opportunity for amateurs, saxophone players, tenors, baritone or what have you will be sponsored by the Morehead Women's club on Tuesday, October 1st.

### HIGH SCHOOL HOLDS PEP RALLY TO ELECT LEADERS

The clearest period at Morehead High School was the pep rally held last night, which constituted for cheerleaders the opportunity to elect their cheer leaders.

### Jack Carter, Morehead High Senator, was elected president of the school.

### The seniors and a number of their friends enjoyed a wicker roast at Rodburn Hollow on Tuesday evening, September 24.

### James Justice, was selected president of the Senior Class of the Morehead High School by unanimous vote.

### Jack Carter was elected president of the student council for the ensuing year.

## Election Officers For November Selected By Commissioners; Includes 2 Dems, 2 G.O.P.'s

Election officers selected for the November 5th primary for Rowan County, by the election commission composed of Sheriff Mort May, Chas. Jiggs, and Arthur Blair are:

- MOREHEAD, NO. 1:** James Peratt Sheriff; Dave Gibson, Judge; P. L. Nickell, Clerk; P. M. Lewis, Judge.
- FARMERS NO. 2:** Ernie Shays, Sheriff; Clayton Prather, Judge; Bill McClain, Clerk; Joe Ward, Judge.
- PREMY NO. 3:** Edgar Phillips, Sheriff; D. B. Stoddley, Judge; Howard Holt, Clerk; Frank Lewis, Judge.
- HOGTOWN NO. 4:** I. E. Palfrey, Sheriff; D. L. Taber, Judge; A. J. Williams, Clerk; Lester Barker, Judge.
- PINE GROVE NO. 5:** Leland Hogg, Sheriff; Willie Eade, Judge; Russell Gilkin, Clerk; Lee Histon, Judge.
- BRUSHY NO. 6:** Lewis Riddle, Sheriff; John Davis, Judge; Sam Litton, Clerk; Wheeler Eppertart, Judge.
- MOREHEAD NO. 7:** Paul Rogers, Sheriff; Floyd Brown, Judge; P. L. Hollister, Clerk; Elbert Johnson, Judge.
- HALEMAND NO. 8:** Charlie Cox, Sheriff; Russell Fugate, Judge; Ernest Fisher, Clerk; Wiley Conley, Judge.

## SWOPE SCORES JOHNSON, DAN TALBOTT HERE

### G.O.P. Nominee Heard By Crowd Overflowing Courtroom; Outlines Platform

### FAVORS \$1200 PER CAPITA

Promising a program of "rigid economy and thorough house cleaning" if elected Governor, Judge King Swope opened his campaign in this section of the state this afternoon with an address before a crowd that overflowed the Morehead courtroom and covered much of the lawn where loudspeakers had been installed.

### Scoring the highway commission the speaker said he was for appointing a non-political highway commission.

### There is today no man that can tell you what Kentucky's debt is.

### "I can tell you one thing," he continued, "When I am Governor I won't be asking advice from Ben Johnson, Percy Haley and Dan Talbot; Ben Johnson won't have anything more to do with the government than the man in the moon."

The teachers voted to contribute one dollar each to the school and agricultural fair. They then voted unanimously that this county join the K. E. A. one hundred per cent.

## WAGNER NO. 9: J. M. Jennings, Sheriff; Wesley Cox, Judge; H. C. McRayner, Clerk; C. E. Perkins, Judge.

## MOREHEAD NO. 10: Irvin Quisenberry, Sheriff; J. B. Frayley, Judge; J. W. Helwig, Clerk; Clayton Johnson, Judge.

## FARMERS NO. 11: Allen Hayden, Sheriff; James Peters, Judge; Harry Stamper, Clerk; Claude Utterback, Judge.

## CRANSTON NO. 12: James Blevins, Sheriff; E. F. Reed, Judge; John Littleton, Clerk; Abel Tackett, Judge.

## BLENKINZIE NO. 13: A. J. McKenzie, Sheriff; Jeff Davis, Judge; Albert Crosthwaite, Clerk; Virgil Carey, Judge.

## DRY CREEK NO. 14: Robert Thornberry, Sheriff; Bill Richardson, Judge; Marion Nyahner, Clerk; Bill Lambert, Judge.

## PLANK NO. 15: Baldwin Sloan, Sheriff; James Eade, Judge; George Williams, Clerk; Ben Buckner, Judge.

## HAYES NO. 16: Emmett Roberts, Sheriff; John B. Messer, Judge; W. C. Hoggie, Clerk; James Stevens, Judge.

## LEWIS NO. 17: Charles Waddell, Sheriff; A. J. Christian, Judge; Kenneth Lewis, Clerk; Ed Hamilton, Judge.

## More Than 400 Prize Rings Offered This Year At School And Agricultural Fair

Can you bake a delicious pie that is good to look at and better to eat? Do you believe you grow tomatoes, corn or any other vegetable better than anyone else in the county?

Are you a good seamstress, making quilts, covers and the many other beautiful things created by a needle and art?

Does your orchard bear some of the finest fruit in the county? Are you a recent winery?

Can you make delicious fudge, caramels and other candies? Have you a large watermelon, pumpkin or squash stored away?

Do you have the best baby in Rowan county? Are you an artist at making bird houses or other specific spare-hour carpenter jobs?

If you are included in any one of these groups or hundreds of others, then make your entry into the Rowan County School and Agricultural Fair which opens at the Morehead High School gymnasium next Friday and extends through Saturday.

## TEACHERS MEET AT HIGH SCHOOL

### Draft Plans For Part In This Year's Fair

The Pre-Fair Teachers Meeting was held Friday, September 20, in the Morehead High School Gymnasium, with County Superintendent Roy T. Corraette presiding.

The morning session of the meeting was given over to the discussion of the importance of the Agricultural Fair exhibit, and County Agent C. L. Goff discussed the agricultural side of the Fair.

The Declaratory contests were held also at this meeting, with Fern James of Elliottville winning first place, Levea H. Hensley of Clay City second, and Evelyn McCoy of Sharkey third.

The winners of the other scholastic contests Friday will also go to the State Tournament at Morehead on November first and second.

The teachers voted to contribute one dollar each to the school and agricultural fair. They then voted unanimously that this county join the K. E. A. one hundred per cent.

All teachers are enthusiastic about the Fair and predict a bigger and better exposition than ever before. The interest is growing from year to year.

### At the close of the meeting rural teachers received checks for their first month's teaching services.

## M. L. WILSON TO SET UP LAW PRACTICE IN MOREHEAD

M. L. Wilson, former Morehead City Attorney, will set up his practice in Morehead, he said today. Mr. Wilson recently went to Mayville to investigate the possibility of setting up an office there, but became ill and has been in a hospital for the past 2 weeks.

### CORRECTION

A slight mistake was made in the listing of Women's officers of the Republican party in last week's issue. The correct and complete list for this county is hereby quoted, in the manner of a correction: Duddy Caudill, Chairman; C. V. Aldrey, Vice-Chairman; Joe McKinney, Secretary; and Charlie Jennings, Treasurer. Mrs. Claude Keller, Women's Chairman; Mrs. Howard Hall, Women's Vice-Chairman; Mrs. Bethel Hall, Secretary; and Mrs. Ed Farris, Publicity Director.

### The Independent is glad to make this correction.

## ROOSEVELT ON VACATION TRIP

President Roosevelt is en route west tonight on a vacation trip which is expected to take on prime importance as an exploring preliminary to the 1936 presidential campaign.

## CONDUCT PROBE IN MYSTERY OF DEATH AT GALES

### Foul Play Claimed As Marion Smith Hit By C & O Freight Train

### MAY HAVE BEEN SHOT, THEORY

Believing there might have been foul play in the death of Marion Smith, at Gales early Sunday morning, local officers continued the probe a week into the mysterious death of the Haldeman track worker.

A jury called by Coroner James Brown, held a four hour investigation, and gave a report of "death by unknown and unascertained means."

According to the story pieced together from the evidence of 25 witnesses, Smith was last seen alive at 11:00 o'clock Saturday night. At 2 o'clock Sunday morning he was hit by an east bound (C & O) freight train that was east for a quarter of a mile. Blood was found, however, at a spot removed from the tracks, according to officers who believe that he might have met his death there at the point of a gun.

Many theories regarding the case have been advanced. The idea of murder is predominant, and will probably be abandoned, if true.

The body was found at 8:30 am on track and was supposed to be the body of Bill Smith of Haldeman. Funeral services were held there.

## A. B. Chandler Visits Friends, Headquarters

Lieutenant Governor A. B. Chandler, Democratic nominee for Governor of Kentucky stopped in Morehead last Saturday, enroute to Versailles and Louisville. Mr. Chandler met many of his supporters and well-wishers during his brief stop-over. He was at the Chandler headquarters, located in the law offices of Hoggie and Hoggie.

### COAL OPERATORS AGREE

Two committees representing miners and operators tonight agreed a wage agreement which will send 400,000 soft coal strikers back to work in seventy-two hours.

## Democrats Plan Harmonious Front For Final Election; Chandler Prepares For Activity

With notes of harmony increasing prevalent in the ranks of the Democratic party, odds against King Rowe Republican gubernatorial nominee, rose rapidly during the past week.

Likewise, an attempt among certain followers of Thomas S. Rhea, defeated candidate for the Democratic gubernatorial nomination, to start a bolt in the Democratic ranks, appeared to have been thoroughly beaten.

Nevertheless, party leaders supporting A. B. "Happy" Chandler, Democratic gubernatorial nominee stood ready to nip any attempts to disrupt Chandler's election by disrupting the harmony they have sought to bring about in party ranks since the bitter primary campaigns in August and September.

Already most of the party leaders have pledged their support to Chandler, among them being J. Lester Dutton, chairman of the State Highway Commission; Congressman Fred Vinson and Glover Carey, and Mayor Neville Miller of Louisville, who supported Rhea in the primary. Both United States Senators - Alben W. Barkley and M. M. Logan - also have announced they will actively support the Democratic nominees in the November election. Only Gov. Ruby Laffoon and Rhea have been

delinquent in announcing their support of Chandler.

Tax issue Believed Dead As we week passed and no further intimation came from the governor regarding the possibility of calling a special session to repeal the states 3 per cent sales tax, the main bone of contention in the primary campaign, it was generally believed the matter would be dropped.

During the past week numerous party leaders have advised the governor against such a move at this time, in order to maintain party harmony. Rumors have been current here that the governor may soon leave the state for a short visit to give Chandler, as lieutenant-governor, an opportunity to call a special session if he so desired. The governor has not left the state since his memorable trip to Washington last spring when Chandler called a special session of the legislature to enact a compulsory primary law.

Further evidences of party harmony are expected to be displayed at meetings of Democratic women leaders and Younger Democratic clubs in Louisville within the next two weeks.

Chandler also will have the entire support of the national administration.

(Continued On Last Page)

(Continued On Last Page)

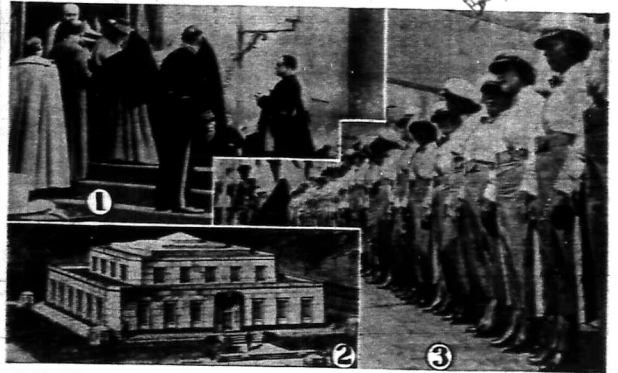


# Thousands Pay Homage to Senator Long



Thousands of friends filed past the bier of the late United States Senator Huey P. Long, who was killed by an assassin's bullet, as his corpse lay in state in the rotunda of the state capitol in Baton Rouge.

# Scenes and Persons in the Current News



1—Pope Pius greeting delegates to the International Congress of Catholic Nurses at Castel Gandolfo, his summer residence. 2—Architect's drawing of the heavily armed entrance to the vaults that are being built for the federal treasury's gold hoard at Fort Knox, Kentucky. 3—Members of Cuba's newly formed army of women which Col. Fulgencio Batista, head of the military forces, is training.

## Jackie Coogan and Toby Wing to Wed



"The KID" as Jackie Coogan has been known to millions ever since the famed Charlie Chaplin picture of the same name, has grown up. He and blond Toby Wing of the movies have announced their engagement, and don't they look happy? Wedding plans depend upon parental action.

## Teachers Re-Elect Lowry Union Chief

While some of the delegates walked out in fighting over a charge that a



chapter charter was communique, the American Federation of Teachers re-elected Raymond Lowry president.

## President Is Chef for Newspaper Men



President Franklin D. Roosevelt at the griddle roasting hot dogs for his newspaper men guests at a picnic at Val-Kill, near Hyde Park.

## Chains Get Sympathy for Striking Workers

Mary Sloan, innocent, pretty garment worker, who chained herself to a post



to excite the sympathy of passersby for her fellow strikers in the women's garment industry of New York.

## Italian Volunteers Start for East Africa



A regiment of recently recruited volunteers marching through ancient Rome, with the Colosseum in the background, during a public demonstration and just prior to their departure for the Italian Somaliland to join Mussolini's forces in the "rebelled" African campaign.

## Allison Beats Perry, Wood for Net Title

Some smile wears Wilper Allison, who beat Fred Perry and Spiny



Wood to become national tennis champion.

## Youth Versus Age in Chess Games



Teaching in reverse was witnessed in the Chess and Checker Club of Los Angeles when youthful members showed old-timers how to win. They lasted more than three hours and resulted in a win for the young bloods by thirteen to five. Youngsters ranged in age from seven years to twenty-two. Oldsters were all above sixty.

## Laura Ingalls Sets Women's Air Record

Laura Ingalls is pictured here at the end of her flight of 13 hours, 34 min-



utes, a record, which set a new world record for a woman's solo flight.

## Social Security Board Meets



The Social Security board, to administer President Roosevelt's program of unemployment insurance and old-age pensions, held its first meeting in Washington with John G. Winant, former Republican governor of New Hampshire, as chairman. Left to right: Arthur A. Allsinger, John G. Winant and Vincent Marquis Miller. The social security program has proved one of the most popular steps taken by the New Deal, and follows the trend which has been established in most other countries, with varied success.

## Death Rides the Storm in Delaware



A somewhat sudden abatement of the storm conditions in Florida resulted on the Delaware-Maryland-Virginia "eastern shore," and this scene, snapped a few miles north of Harrington, Del., shows one of the grim accomplishments of the storm. Three trawlers were killed in this wash-out-wreck and one was injured.



# Morehead Eagles Open Against Rio Grande Here Saturday

## VIKINGS OPEN 1935 SEASON HERE FRIDAY WITH OLIVE HILL

All Morehead football teams will swing into action this week with three games, 2 of them at Jayne Stadium on the card.

**Friday, 2:00 o'clock**—Breckinridge Training School at Russell.

**Friday, 3:00 o'clock**—Olive Hill High vs. Morehead High at Jayne Stadium.

**Saturday, 2:30 o'clock**—Rio Grande (Ohio) College vs. Morehead College at Jayne Stadium.

Breckinridge, loser to Grayson by 14-0 last week figure to be on the short end of the count at Russell.

The Breck lads showed excellent blocking in the Grayson game, and should be bolstered for the Russell affair by a better defense, created when Coach Bobby Laughlin did considerable shifting of players this week.

Russell, however, has one of the strongest defenses in the Eastern Kentucky loop, and should prove difficult for the Morehead boys.

An upset would not be surprising to the writer if Coach Austin Eddle's team bumped Olive Hill in a conference engagement tomorrow afternoon at Jayne Stadium.

From poor prospects, Coach Eddle's team has developed into a dark horse. Many boys have been hailed in this year from the rural sections, giving Coach Eddle more material to work with.

The Morehead High team has not been seen in action yet, but they have been showing good form in practice. Olive Hill figures to be the favorite, but with the writer the game appears to be a toss-up—if anything, Coach Eddle's team should win.

The Morehead College Eagles tap-

ered off with a brief scrimmage this afternoon against the freshmen as the final preparation for Saturday's game with Rio Grande, Ohio, College.

The Teachers appeared slightly more impressive in their workouts this week, but Coach Downing was not completely satisfied with the performance. Morehead should show only early season form, since they will have had less than 2 weeks practice before the opening whistle. So far there have been no injuries in practice.

Coach Downing has not named a starting lineup for Saturday's game, but judging from the manner in which he has placed them in practice it is likely that six or seven sophomores will be on the firing line at the opening whistle.

Both ends will probably be sophomores. They are Luther Varney and Henderson, who have shown enough in practice this week to insure them of getting in the middle, probably as starters.

Carter, a sophomore and Homer Taylor, a letterman of last year, are likely to get the starting assignments at the tackles. The guards present a difficult problem, but Shney and Nov, of last season's varsity squad appear to be the standouts. Joe Taylor or Dean Addington will open at center. If Taylor is at the pivot spot, Addington, a good offensive player may be shifted to one of the tackles.

It is difficult to pick the outstanding backs. Vinson, Dale, Ryan, Alley, John and Tim Wyatt have been working mostly in the first string team. Coach Downing indicated earlier in the week that Vinson will begin at fullback, Dale at quarter, and Alley and Ryan at the halves.

**TWO NATURALS**  
Straight Whiskey  
by **Stiemort**  
LOUISVILLE, KENTUCKY

Vinson and Dale are sophomores, and will be called on for the brunt of Morehead's offense.

Dale will do the punting, and Vinson the place-kicking. Both are good passers, but Vinson's knack of turning loose of the ball like a bullet, while he's running fast toward the sidelines, marks him as the more dangerous. If the going is tough, the Eagles are sure to resort to numerous passes, for their offense is built around this style of play. The team will use only a minimum number of plays, since there has not been enough time to give them a large number.

Last year Morehead defeated Rio Grande by a touchdown. In 1933 the Eagles were victorious over the same team 10-7, by virtue of a last minute 30 yard field goal. The teams did not meet in 1932, but in 1931, the Ohioans won 19-13 in a game played at Ironton, O. The odds this year favor Morehead, and they expect to roll up a more impressive score.

The Rio Grande team will not arrive until Saturday morning. The Morehead College band will lead a parade to Jayne Stadium 30 minutes before the game. A pep rally is planned here for Friday.

Advertiser in the Independent PAYS. Ask those who have tried it.

## "M" CLUB REVIEW



DR. EVERETT BLAIR

Dr. Everett Blair of this city is the only former athlete of Morehead Teachers College and member of the "Alumni M Club" that has entered the profession of Medicine. Young Blair played on the varsity football club of Morehead Teachers College and was an outstanding linesman as well as an outstanding student in his classes. Going to Ann Arbor after two years work at Morehead, Dr. Blair completed his work for a Bachelor Degree and returned to Morehead Teachers College where he taught science for a year. He then went to Louisville where he completed his work in Medicine and took his intern at St. Joseph's hospital, Louisville. After a very successful year practicing with Dr. A. L. Blair at Ashland, Dr. Blair returned to Morehead and is now located in the Caulfield Building on First Street. The "Alumni M Club" of Morehead Teachers College is proud of the success of Dr. Everett Blair in his chosen field.

Dr. Blair has become a popular physician among the citizens of Morehead and Rowan County.

This is one of a series of articles especially written for the Morehead Independent about members of the "Alumni M Club" of Morehead Teachers College. Watch for the others.

## Beautiful Homes



### Are Not Achieved Without Expert Advice and Workmanship

WE OFFER TO MAKE YOU UR HOME MORE BEAUTIFUL WITH THAT ARTISTIC AND PLEASING EFFECT THAT CAN ONLY BE GIVEN BY EXPERTS IN OUR PROFESSION. INTERIOR DECORATING IS OUR BUSINESS, AND THE WORK THAT WE HAVE DONE IN MOREHEAD IS FACTUAL PROOF OF THAT WHICH WE ARE CAPABLE OF DOING FOR YOU. ESTIMATES CHEERFULLY GIVEN. YOU ARE UNDER NO OBLIGATION.

**B. FRANK WILSON**  
Midland Trail Hotel  
**Interior Decorators**

|          |    |           |  |
|----------|----|-----------|--|
| Norris   | LG | Black     | Oct. 25—U. of Tennessee at Knoxville     |
| Hammond  | C  | Daugherty | Nov. 9—Xavier at Cincinnati              |
| Simmons  | RG | Young     | Nov. 16—U. of Miss. at Danville          |
| Murphy   | RT | Allen     | Nov. 23—U. of L. at Louisville           |
| Howard   | RE | Davis     | Nov. 23—U. of Chattanooga at Chattanooga |
| Newland  | QB | Fralley   | Dec. 7—Western at Danville               |
| Prichard | KE | Johnson   |  |
| Burck    | KE | Canfield  |  |
| Hutch    | RE | Prichard  |  |

## College Grid Schedules

| MOREHEAD  |  |
|---|--|
| Sept. 28—Rio Grande at Morehead                 |  |
| Oct. 5—Georgetown at Georgetown                 |  |
| Oct. 12—To be filled at Morehead                |  |
| Oct. 19—Union at Barbourville                   |  |
| Oct. 25—Transylvania at Morehead                |  |
| Nov. 2—Eastern at Morehead                      |  |
| Nov. 9—Alfred Holbrook at Morehead              |  |
| Nov. 16—U. of L. at Louisville                  |  |
| EASTERN   |  |
| Sept. 28—Miami U. at Oxford, O.                 |  |
| Oct. 5—Alfred Holbrook at Richmond              |  |
| Oct. 12—Open                                    |  |
| Oct. 19—Georgetown at Richmond                  |  |
| Oct. 26—U. of L. at Louisville                  |  |
| Nov. 2—Morehead at Morehead                     |  |
| Nov. 9—Union at Richmond                        |  |
| Nov. 16—Transylvania at Richmond                |  |
| Nov. 23—Western at Bowling Green                |  |
| CENTRE  |  |
| Sept. 27—Temple U. at Philadelphia              |  |
| Oct. 5—Indiana U. at Bloomington                |  |
| Oct. 11—Georgetown at Danville                  |  |
| Oct. 19—Washington & Lee at Louisville          |  |
| UNIVERSITY OF KENTUCKY                          |  |
| Sept. 21—Murryville at Lexington                |  |
| Sept. 27—Xavier at Cincinnati                   |  |
| Oct. 5—Ohio State at Columbus                   |  |
| Oct. 12—Georgia Tech at Lexington               |  |
| Oct. 19—Auburn at Monticorey, Ala.              |  |
| Oct. 26—Freshman at Lexington                   |  |
| Nov. 2—Alabama at Birmingham                    |  |
| Nov. 9—Florida at Lexington                     |  |
| Nov. 16—Tulane at New Orleans                   |  |
| Nov. 23—Tennessee at Lexington                  |  |
| PENNSYLVANIA                                    |  |
| Oct. 5—U. of L. at Louisville                   |  |
| Oct. 11—Xavier U. at Cincinnati                 |  |
| Oct. 19—Western at Bowling Green                |  |
| Oct. 26—Morehead at Morehead                    |  |
| Nov. 2—Alfred Holbrook at Lex.                  |  |
| Nov. 9—Denison at Grandville, O.                |  |
| Nov. 16—Richmond at Richmond                    |  |
| Nov. 27—Mortimer-Harvey at Barbourville, W. Va. |  |
| GEORGETOWN                                      |  |
| Sept. 20—Xavier U. at Cincinnati                |  |
| Sept. 28—Definitely Open                        |  |
| Oct. 5—Morehead at Georgetown                   |  |
| Oct. 11—Centre at Danville                      |  |
| Oct. 19—Eastern at Richmond                     |  |
| Oct. 26—Delaware at Georgetown                  |  |
| Nov. 2—Louisville at Georgetown                 |  |
| Nov. 3—Open                                     |  |
| Nov. 16—Union at Barbourville                   |  |
| Nov. 23—Hanover at Georgetown                   |  |

## TO ORGANIZE FISH AND GAME CLUB

Van Y. Greene and Grover S. Owsley of the Kentucky State Game Commission will be in Morehead Tuesday evening for the purpose of organizing a local fish and game club. The sportsmen meeting will be called at the city hall promptly at seven o'clock. These clubs are being organized throughout the state and have achieved success of game and fish propagation and the preservation of wild life. Mr. Greene is game warden for this district, and has been known to local sportsmen for many years, through his forward work in this department.

## GRAYSON WINS OVER BRECK 14-0

With a lad by the name of Prichard leading the way, the Grayson High School Yellowjackets celebrated the return of football to the school, by defeating Bobby Laughlin's Breckinridge High eleven at Jayne Stadium, by a 14-0 count. Prichard consistently reeled off substantial gains, being especially effective after they had penetrated into Breck's territory. Murphy at tackle, Hendrix at end, and Burton, also played good ball for the victors. The Grayson team showed offensive promise, but the Breck team did fairly well at solving their defense.

A boy by the name of Prichard also starred for Breckinridge. Fralley, Tatum, Johnson and Young also played to advantage for the losers. Grayson pushed across its first touchdown in the second quarter after staving off Morehead's scoring threat, and came back to sew the game up in the last period. Line plays accounted for both extra points.

Both teams showed better form than was expected. Coach Broadwick's team was heavier and appeared to be about as much better as the 2 touchdowns indicated. Morehead's blocking was mid-season style.

The lineup:  
Grayson: Huff, Hendrix, Prichard, Fralley, Johnson, Young, Tatum, Dillon.  
Breck: Huff, Hendrix, Prichard, Fralley, Johnson, Young, Tatum, Dillon.

## Business Is On The Upturn

**Trade Spends as it Hits '35**  
**STEEL OUTPUT RISES GREATEST**  
**EXPAND AND INVEST**  
**SIX MONTHS**  
**EMPLOYEES GET LARGER**  
**BOOST JAN**  
**PACKING WAGES, WORKERS SHOW SWAMP INCREASE**  
**STEEL'S TRADE SHOWS CONTRA SEASONAL GAIN**

The Newspapers bring the good news to America that business is once again reaching the prosperity stages. The newspapers can justify claim no little part in the upturn, not only through their columns of news releases—the harbinger to the public of the good news, but through the advertising columns that mean millions of dollars in business and profit to the wise advertiser.

Consult us for your advertising needs. Let this newspaper prove your greatest aid in the tinkle of cash register and the jingle of sales. Let the Independent aid you in turning over that supply of stock with profits.

**THE MOREHEAD INDEPENDENT**  
Incorporated  
"A Community Building Newspaper Building Customers Through Results"

## Come to the Fair Bishop's . . .

The house that Service, Quality and Satisfaction built.

## Invites You . . .

Who have been our customers of many years past and those of you that we know will be our patrons of today and the future to come in during your visit to the 5th annual Rowan County School and Agricultural Fair.

**The C.E. Bishop Drug Co.**  
20 YEARS OF CONTINUOUS SERVICE TO MOREHEAD

The Lucky Lawrences

By KATHLEEN NORRIS

Copyright by Kathleen Norris WFO Service

SYNOPSIS

The Boston Lawrences came to California at the end of their vacation... The beauty and sweetness she wanted...

CHAPTER IX—Continued

The company began to build a trim little station, all red-and-white paint and fences... "I think I could bear it better, Phil. I could stand some more."

"Oh, Phil. I'd be a marvelous day for it!" He looked at her as if he had never seen her before... "What if it, Phil?" "Nothing," Phil said.

For a name—and she says, "That we call the doctor?"... "What if you suppose will happen to Van, Gail?" "I'm thinking, he was visiting at the New Jersey plant, the last I heard."

PEASANT COTTAGE POT HOLDER SET

By GRANDMOTHER CLARK



With a very little handwork you can have this charming little peasant cottage with a few around it, right in your kitchen... "It was all so bewildering! Why, the name Marchioness had been one with which to configure for generations."

PAINT-THIRSTY HOMES DRAIN ON OWNER'S PURSE

"Americans are not accustomed to figuring depreciation costs on residential properties," says Arthur Stires in "House and Garden"... "I'm glad to see you're getting out of your nest."

Advertisements for Murine Eyes, Fly-Tox Kills Mosquitoes Flies-Spiders, Itching... anywhere on the body, and Resinol.

Beauty that "Stays On" MOTORISTS WISE SIMONIZ BOYS! GIRLS! SAVE ARIOSA COUPONS Get beautiful "American Hero" Albums FREE! ARBUCKLES COFFEE

"I've discovered Calumet's big, new 10¢ can!" "No more 'by-gone-and-by-gone' baking in this house now!" WHY DOES CALUMET give such satisfying different from other baking powders? Because Calumet contains two ingredients...

CARE OF THE TEETH

"By the time most persons are old enough to think much about it, they have been brushing their teeth for years. So they take the method for granted and continue to switch the brush around with a fine display of action but with no thought; and frequently the only remaining virtue of the brush is that of long and faithful service."

Destitutes to be used on tooth brushes should be regarded as cleaning agents and not as medications or cures.



WHEN THEY SHOW THESE SIGNS

Nervousness, Constipation, and Poor Appetite, check their diets for this all-important, 3-ingredient vitamin

Many are nervous, poor in appetite, suffer from constipation, because their diets lack enough of the precious Vitamin B for keeping fit.

So give everyone Quaker Oats every morning. Because in addition to its generous supply of Vitamin B for keeping fit, it contains food-energy, muscle and bone-building ingredients. For about 1/2 cent.

Just serving it tomorrow for 2 weeks. Quaker Oats has a wholesome, nutty, luscious appeal to the appetite. It's delicious, surprisingly good. All grain experts agree.

It's a 100 percent natural product. It's worth of Quaker Oats.

9 cubes of Fresh Fruit. Quaker and Quaker's Oats are the same.

Fall Fatal. About 47 per cent of all home fatalities result from falls, and 18 per cent from burns.

Advertisement for Chamberlain's Cough Remedy, featuring an illustration of a woman and child, and the text 'USE - CHAMBERLAIN'S COUGH REMEDY MAKING POWER 10 CENTS'.

Use for Straw. Soviet scientists say they can pro duce auto gas from straw.

Advertisement for Coleman Self-Illuminating Iron, featuring an illustration of the iron and the text 'The Easy Way to Iron Coleman Self-Illuminating Iron INSTANT LIGHTING'.

IMPROVED UNIFORM INTERNATIONAL SUNDAY SCHOOL Lesson

By REV. F. R. FITZWATER, D. D., Member of Faculty, Moody Bible Institute of Chicago, and Co. Western Newspaper Union.

Lesson for September 29 JOHN (THE MINISTER AND HIS PEOPLE)

LESSON TEXT—Third Epistle of John. GOLDEN TEXT—Beloved, imitate and do that which is evil, but that which is good. He that doeth good is of God; he that doeth evil hath not seen God... PRIMARY TOPIC—A Letter From John. JUNIOR TOPIC—With Ink and Pen. INTERMEDIATE AND SENIOR TOPIC—Makes Our Church Friendly. YOUNG PEOPLE AND ADULT TOPIC—A Friendly and Hospitable Church.

- I. Personal History. 1. He was the son of Zebedee and brother of the apostle James (Matt. 4:21). The implication is that his father was in easy circumstances, for he had boats and hired servants (Mark 1:19-20). 2. He was a disciple of John the Baptist (John 1:25-40). This was a most valuable training, for John was a man sent from God (John 1:6). The fiery eloquence of the Baptist no doubt profoundly impressed him. 3. He was called to follow Jesus (Matt. 4:21, 22). He was first called into the relationship of a disciple. As a disciple he came to know Jesus personally. 4. Appointed as an apostle (Matt. 10:2). Having been tested as a disciple, he now is appointed as an apostle (Mark 3:13-19; Luke 6:13-16). II. His Character. 1. He was reserved. That is, he was decidedly reticent about himself. He speaks of himself as "the disciple whom Jesus loved" and "that other disciple."

2. He possessed a rare gift of penetrative insight. The truths set forth in his writings did not come as a result of the wisdom he had as a penetrative insight. He was indeed a seer. 3. He was thoroughly masculine. Christ's art does him a thorough injustice in portraying him as effeminate. He was intense, vehement in his temperament. He was truly a "son of thunder," as Christ declared (Mark 3:17).

III. Some Instances of Behavior. 1. Intolerance of irregular service (Luke 9:40, 50). There was a certain discipline in the way he was intensely witnessing and God had honored his testimony with power to cast out devils. John forbade him because he was not working with the same discipline. 2. His righteous indignation displayed (Luke 9:53-56). When Jesus had set his face toward Jerusalem some Samaritans refused to show hospitality to him. This treatment of his Master so aroused the anger of John and James that they desired to kill them with stones to burn them up. This action grew out of John's great love for his Master. 3. John's care of Christ's mother (John 19:25-27). When Jesus beheld his mother and committed her to the tender care of John. The intense love that he had for his Lord would move him to express the tenderest affection for his mother.

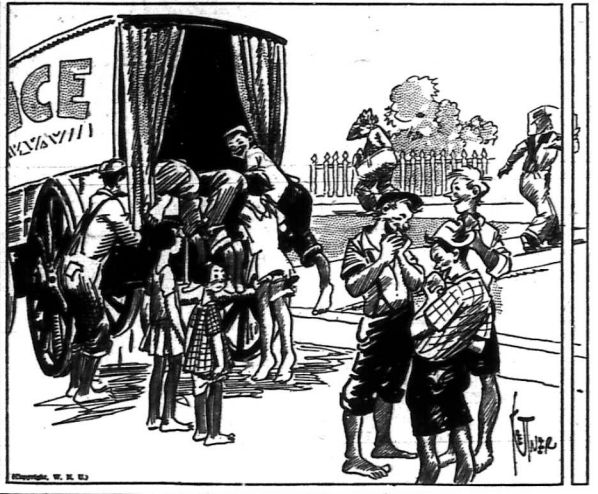
IV. His Third Epistle. This is one of the three private Epistles of the New Testament and gives us a look into the early church life and also a picture of the aged apostle. This Epistle consists of the following parts:

- 1. The salutation (vv. 1-4). This letter was addressed to Gaius, with the fervent wish that his temporal prosperity and physical health would be assured by the measure of the increase of his spirituality. His supreme joy was to hear that his children were walking in the truth. 2. His praise for Gaius (vv. 5-8). This praise was for the hospitality which Gaius showed toward some traveling evangelists. In spite of the opposition of a certain prominent member of the church, Gaius received these preachers into his home. To receive God's messengers into our homes and send them forth on their journey is a deed worthy of God. One of the best ways to help the truth is to show hospitality to its messengers. 3. His commendation of Diotrephes (vv. 9, 10). The sin of this man was his over-weening self-confidence and arrogance. He loved to have the place of pre-eminence; therefore, for that reason he refused to receive these traveling evangelists and expelled from the church those who had received them into their homes. He even maliciously attacked John the beloved pastor. His spirit of pride moved him to acts of treachery toward others. 4. His commendation of Demetrius (v. 12). Demetrius was perhaps the bearer of this letter. John gives the assurance that Demetrius was of good report among all men. His life and good deeds proved that he was in fellowship with God.

Joy We should publish our joys and conceal our griefs. The worse the passage, the more welcome the port. Joy and sorrow are next-door neighbors. Joy which we cannot share with others is only half enjoyed. Enthusiasm To have true enthusiasm, we must have faith, assurance, hope, reliance and confidence in our own integrity and ability.

OUR COMIC SECTION

Events in the Lives of Little Men



FINNEY OF THE FORCE

By Ted O'Laughlin

Cat Nap



THE FEATHERHEADS

By Osborne

Driven to It



Accent on Youth Frock That Puts



Always a good beginning this youthful tailored collar on the simple yoke makes a departure for the dainty softness of the bodice. The prettiness of the chic frock is furthered with a graceful flare sleeve—or it may puff, if you prefer. The results are so satisfying you'll find it real fun to run up this little dress in a dainty printed silk or cotton. A soft handkerchief linen would be stunning, too, and so easy to tub. Buttons and belt can pick up a color in the print and make a striking accent.

Pattern 9343 may be ordered only in sizes 14, 16, 18, 20, 22, 24, 26, 28, 30, 32, 34 and 36. Size 16 requires 3 1/2 yards 39-inch fabric. Complete, diagrammed and cut sheet included. SEND FIFTEEN CENTS in cash or stamps (coins preferred) for this pattern. Be sure to write plainly your NAME, ADDRESS, the STYLE NUMBER and SIZE. Send your orders to the Sewing Circle Pattern Department, 232 West Eighteenth Street, New York, N. Y.

SMILES

FORTUNATE FAMILY Teacher—And what is your father's name. New Pupil—It's Daddy. Teacher—Yes, I know, dear, but what does your mother call him? New Pupil—She doesn't call him names. She likes him.

All Sealed Up Small Mary came running to her mother with a soft-shelled egg. "Look, Mamma," she exclaimed "one of our hens is wrapping her eggs in cellophane."

Gobble, Gobble! Landlady—What part of the turkey do you wish? Boarder—Some of the meat, please. —Answers Magazine.

Storms and Sunshine Edgar—"Would you, if you were I, marry a blond?" Louder—"Well, she'll make a fair wife."—Detroit News.

Nocturnal Concert "Have you any sheet music at home?" "Every night, my husband moans as soon as he gets under the covers."

Advertisement for Wrigley's Spearmint Gum, featuring an illustration of a man and the text 'FLAVOR-QUALITY WRIGLEY'S SPEARMINT GUM THE PERFECT GUM'.





CARE OF THE TEETH

By the time most persons are old enough to think much about it, they have been brushing their teeth for years. So they take the method for granted and continue to rub the brush around with a fine display of action but with no thought; and frequently the only remaining virtue of the brush is that of being and faithful servant.

The operation of tooth brushing should require not less than three minutes for each jaw, three times a day; on rising, after luncheon and before retiring, and in the morning.

Definiteness to be used on tooth brushes should be regarded as cleaning agents and not as medications or cures.



WHEN THEY SHOW THESE SIGNS

Nervousness, Constipation, and Poor Appetite, check their diets for this all-important, 3-ingredient formula.

Many are nervous poor in appetite, suffer out of order, because their daily diet lacks enough of the potent Vitamin B for living life.

So give things keep them back like lack of this protective food element.

Buy every Quaker Oats every morning because in addition to its generous supply of Vitamin B for living life, it contains food-energy, muscle and body-building ingredients. For those 35c per bushel.

Start serving it tomorrow for a 2-weeks test. Quaker Oats has a wholesome, nutritious, delicious appeal to the average family, especially good for all ages.

It is the only 3 grain cereal... In worth of Quaker Oats 3 colors of Fresh Fruit.

Quaker and Quaker's Oats are the same.

Falls Fatal About 47 per cent of all home fire fatalities result from falls, and 18 per cent from burns.

USE



10 CENTS

Use for Straw Soviet scientists say they can produce straw gas from straw.

The Easy Way to Iron

Advertisement for Coleman Self-Illuminating Instant Lighting, featuring a Coleman lantern and text describing its benefits.

IMPROVED UNIFORM INTERNATIONAL SUNDAY SCHOOL LESSON

By REV. P. S. FLETCHER, D. D., Member of Faculty, Moody Bible Institute of Chicago, & Western Messenger Union.

Lesson for September 29

JOHN (THE MINISTER AND HIS PEOPLE)

LESSON TEXT—Third Epistle of John.

GOLDEN TEXT—Beloved, imitate that which is evil, but that which is good. He that doeth good is of God; he that doeth evil hath not seen God.—III John.

PRIMARY TOPIC—A Letter From John.

JUNIOR TOPIC—With Ink and Pen, INTERMEDIATE AND SENIOR TOPIC—Making Our Church Friendly.

YOUNG PEOPLE AND ADULT TOPIC—A Friendly and Hospitable Church.

I. Personal History. 1. He was the son of Zebedee and brother of the apostle James (Matt. 4:21). The implication is that his father was in easy circumstances, for he had boats and hired servants (Mark 1:20, 29).

2. He was a disciple of John the Baptist (John 1:35-40). This was a most valuable training, for John was a man sent from God (John 1:9). The fiery eloquence of the Baptist no doubt profoundly impressed him.

3. He was called to follow Jesus (Matt. 4:21, 22). This was first called into the relationship of a disciple. As a disciple he came to know Jesus personally.

4. Appointed as an apostle (Matt. 10:2). Having been treated as a disciple, he now is appointed as an apostle (Mark 3:13-19; Luke 6:13-16).

II. His Character. 1. He was reserved. That is, he was decidedly reticent about himself. He speaks of himself as "the disciple whom Jesus loved" and "that other disciple."

2. He possessed a rare gift of penetrative insight. The truths set forth in his writings did not come as a revelation in proportion as he had been penetrative insight. He was indeed a seer.

3. He was thoroughly masculine. Christian art does him a thorough injustice in portraying him as effeminate. He was intense, vehement in his temperament. He was truly a "son of thunder," as Christ declared (Mark 3:17).

III. Some Instances of Behavior. 1. Intolerance of irregular service (Luke 9:46, 50). There was a certain teacher who seems to have been fondly welcomed and God had honored his testimony with power to cast out devils. John forbade him because he was not working with them.

2. His righteous indignation displayed (Luke 9:53-55). When Jesus had set his face toward Jerusalem some Samaritanians tried to extend hospitality to him. This treatment of his Master so aroused the anger of John and James that they desired to call down fire from heaven to scorch them up. This action grew out of John's great love for his Master.

3. John's care of Christ's mother (John 19:25-27). From the cross Jesus beheld his mother and committed her to the tender care of John. The intense love that he had for his Lord would move him to express the tenderest affection for his mother.

IV. His Third Epistle. This is one of the three private Epistles of the New Testament and gives us a look into the early church life and also a picture of the aged apostle. This Epistle consists of the following parts:

1. The salutation (vs. 1-4). This letter was addressed to Gaius, with the fervent wish that his temporal prosperity and physical health would be measured by the measure of the increase of his spirituality. His express joy was to hear that his children were walking in the truth.

2. His praise for Gaius (vs. 5-8). This praise was for the hospitality which Gaius showed toward some traveling evangelists. In spite of the opposition of a certain prominent member of the church, Gaius received these preachers into his home. To receive God's messengers into our homes and send them forth on their journey is a deed worthy of God. One of the best ways to help the truth is to show hospitality to its messengers.

3. His condemnation of Diotrephes (vs. 9, 10). The sile of this man was his over-weening self-confidence and arrogance. He loved to have the place of pre-eminence; therefore, for that reason he refused to receive those traveling evangelists and expelled from the church those who had received them into their homes. His maliciously attacked John the beloved pastor. His spirit of pride moved him to acts of tyranny toward others.

4. His commendation of Demetrius (vs. 12). Demetrius was perhaps the bearer of this letter. John gives the assurance that Demetrius was of good report among all men. His life of good deeds proved that he was in fellowship with God.

5. Joy We should publish our joys and conceal our griefs. The worse the passage, the more welcome the port.

Joy and sorrow are next-door neighbors. Joy which we cannot share with others is only half enjoyed.

6. Encouragements To have true confidence, we must have faith, assurance, hope, patience and confidence in our own loyalty and ability.

OUR COMIC SECTION

Events in the Lives of Little Men



FINNEY OF THE FORCE

Comic strip 'FINNEY OF THE FORCE' by Ted O'Laughlin. Panel 1: 'HELLO, MISSUS! SNOOP! I O'M SHURE GLAD I SEE YEZ.' Panel 2: 'SEEMS VERY STRANGE TO HEAR YOU SAY THAT.' Panel 3: 'O I WANTED T'YELL YEZ. O'VE BEEN HAVIN' TRUBLE SLEEPIN'—SO OI SEEN TH' DOCTOR T'DAY.' Panel 4: 'OH—OH DON'T TAKE 'EM—OI WANT YEZ TO GIVE 'EM T'YER CAT!' Panel 5: 'OH TOLD HIM 'BOUT TH' NOISES 'YER CAT MAKES AN WAKES ME AT NOIGHT—SO HE GAVE ME SOME SLEEPIN' POWDERS—' Panel 6: 'ARE YA GONNA TAKE ONE EVERY NIGHT?' Panel 7: 'GAD!' Panel 8: 'Cat Nap'.

THE FEATHERHEADS

Comic strip 'THE FEATHERHEADS' by Calahan. Panel 1: 'BUT I NEVER WANT TO TAKE ANOTHER LONG-TRIP IN OUR OLD CAR—' Panel 2: 'I GUESS FELIX ISN'T SO KEEN ABOUT CHANGEFERRING A PARTY LIKE THAT, EITHER—' Panel 3: 'OH, I DIDN'T MIND SO MUCH—IT WAS FANNY WHO DID THE HARD PART.' Panel 4: 'WHY? DID SHE DO THE DRIVING?' Panel 5: 'YEAH—' Panel 6: '—ALL I HAD TO DO WAS TO HOLD THE WHEEL!' Panel 7: 'GAD!' Panel 8: 'Driven to It'.

Accent on Youth Frock That Puts



Always a good beginning this youthful tailored collar on the simple yoke makes a departure for the dainty softness of the bodice. The prettiness of the chic frock is softened with a graceful flare... Pattern 5343 may be ordered only in sizes 14, 16, 18, 20, 22, 24, 26, 28, 30 and 32. Size 16 requires 2 1/2 yards 36-inch fabric; complete, suggested one chart included.

SMILES

Teacher—And what is your father's name? New Pupil—It's Daddy. Teacher—Yes, I know, dear, but what does your mother call him? New Pupil—She does not call him names. She likes him.

All Sealed Up Small Mary came running to her mother with a soft-shelled egg. "Look, Mamma!" she exclaimed "one of our hens is wrapping her eggs in cellophane!"

Gobble, Gobble! Landlady—What part of the turkey do you wish? Boarder—Some of the meat, please.—Answers Magazine.

Storms and Sunshine Edgar—"Would you, if you were I, marry a blond?" Leander—"Well, she'll make a fair wife."—Detroit News.

Nocturnal Concert "Hate you any shoe music at home?" "Every night; my husband moans as soon as he gets under the covers."

Advertisement for Wrigley's Spearmint Gum, featuring a pack of gum and the text 'FLAVOR-QUALITY' and 'WRIGLEY'S SPEARMINT GUM THE PERFECT GUM'.

# Local And Personal

## Miss Adkins Has Party For Friends At Home On Main St.

Miss Mary McClung Adkins entertained with a party Saturday evening, September 26, at her home on Main Street. Cards, checkers and other games provided diversion for the first part of the evening until a scavenger hunt was staged by the hostess. Winners were: Miss Helen Holbrook and Mr. Robert Barnes, for one prize, and the other group prize was won by Misses: Elizabeth Blair, Frances Penix, and Carol Patrick. A lovely refreshment course was served at 9:30 o'clock to the following guests: Misses Helen Holbrook, Frances Peratt, Carol Patrick, Elizabeth Blair, Cherry Falls, Frances Flood, Madgrate Penix, Juanita Lewis and the hostess, Mary McClung Adkins. Messrs. Camden Young, Robert Barnes, Clinton Tatum, J. G. Black, Frank Peak, Robert Elam, Phillip Bradley, J. Warren Blair and Buddy Flood.

## Entertain With Birthdays And Reunion Dinner

Mrs. Claude Keiser entertained Sunday, September 22 with a dinner in honor of her fiftieth birthday anniversary. It was also a reunion of the immediate family with all the children present. Those attending were: Mrs. Keiser's son, Mr. and Mrs. Frank Keiser and son, Claude Willard, of Haldeman, her daughter, Miss Jewel Keiser of Booneville, and her three sons at home, Messrs. Ligon, Claude Dillon, and Robert Lee. This paper joins Mrs. Keiser's family and her host of friends in wishing her a belated, but nevertheless sincere, very happy birthday and many more happier ones.

## Attend Republicans Speaking At Lexington On Saturday

Messrs. Ted Crosthwaite, Roy Cornette, Robert Day and Robert Bishop spent Saturday in Lexington where they attended a Republican speaking. Miss Olive Adams left Thursday for Portsmouth, Ohio, where she is attending a few days with friends. Miss Lydia Marie Caudill spent the week-end in Huntington, West Virginia, with her mother, Mrs. F. S. Whitney and Mr. Whitney. Mr. John Paul Nickell spent Sunday in Ashland as the guest of Miss Mary Frances Bradley. Messrs. Jess and Gladys Allen, Elizabeth Penix, Mrs. C. T. Warwick and Mrs. C. B. Daugherty were visitors in Pikeville. **★ ★ ★**

## Are Guest Of Miss Jean Thomas In Ashland

Mrs. Lydia Messer Caudill and daughter, Miss Leola Margaret, spent Sunday in Ashland. Mrs. Caudill was a dinner guest of Miss Jean Thomas and her sister, Miss Tricie Bell. Mrs. T. F. Carr returned to her home at Hazel Tuesday after spending a few days with her son, Mr. O. P. Carr and family. Miss Lenora Caudill left Wednesday for Lexington where she will spend a few days with friends. Miss Mary Esther Hart who is teaching at Oil Springs, spent the week-end here with her mother, Mr. Hurt.

## Easter Star Held Annual Election Of Officers

The Morehead chapter No. 227, Order of the Eastern Star held its annual election of officers, Tuesday evening, September 24, and the following people were elected: Mrs. C. E. Bishop, Worthy Matron, Mrs. C. P. Duley, Worthy Patron, Mrs. C. O. Leach, Associate Matron, Mrs. Roy Cornette, Associate Patron, Mrs. V. D. Flood, Conductress, Mrs. B. F. Penix, Associate Conductress, Mrs. E. Hooge, Secretary and Mrs. Everett Randall, Treasurer. On Tuesday evening, October 8, the new officer will be installed and the old ones will initiate Mrs. Earl McBrayer. After the initiatory ceremony, and installation of the new officers, refreshments will be served by the following committee: Mrs. Ethel Keiser, Chairman, Mrs. E. Hooge and Mrs. Lindsay Caudill. There has been a greater interest shown recently than for some time and all members are urged to attend the meetings, and assist in promoting the cause of the order. All members who have not paid their dues are requested to do so at once. Misses Lydia Amburgey and Mae Jones and Messrs. Mert Ridge and Richard Montjoy spent the week-end in Cincinnati with relatives. Mr. and Mrs. C. C. Gose of Jack-

son were Sunday visitors at the home of their daughter, Mrs. Curtis Bruce and family.

## Attend Funeral Of Friend At Clearfield

Mr. and Mrs. Arthur Warren and daughter, Miss Jewell, Mr. Warren's mother, Mrs. Anna Scott, and his aunt, Mrs. Tishia Amburgey, all of Ashland attended the funeral of Mrs. Robert Workman at Clearfield Sunday.

## Rowan Women's Club Will Hold Banquet October 1

The Rowan County Women's Club plans to hold a banquet, Monday evening, October 1, at the Midland Trail Hotel. The banquet will begin at 8:00 p. m. and the entertainment will be in charge of the Arts Department. All members are requested to notify their chairmen of their ability or inability to attend. The price of each plate is fifty cents.

## Returns After Visit With Daughter in Winchester Hospital

Mrs. Celia Higgins has returned to her home here after spending several days at the Winchester Hospital. Mrs. Bruce McGlone at Winchester. Mrs. McGlone is reported much improved.

## Dr. and Mrs. R. L. Hoke and son, Andrew, and Mrs. J. M. Clayton spent Saturday in Lexington on business.

Miss Ira Miller Casidy of Yale, spent the week-end with Misses Marguerite and Mary Alice Calvert and her aunt, Mrs. H. C. Lewis. Miss Maxine Cox of Coopers and Miss Tempe King of Malone were visitors in Morehead on Sunday.

Mrs. Russell Meadows spent the week-end in Fullerton with her husband and Dr. and Mrs. M. W. Meadows. She was accompanied by Mr. Edmund Cross and Mr. Russell Meadows who spent Sunday here.

Mr. T. Tatum of Ashland spent the week-end here with his family. Miss Alberta Baker left Saturday afternoon to her home in Louisiana after spending the week here with Misses Catherine, Leticia and Norma Powers.

Mrs. E. Hogge and Mrs. Roy E. Cornette and little daughter, Miss Margaret Sue, spent Saturday in Lexington.

Mrs. Emma Cramer and son, Mr. Leo Cramer, have returned to their home in Louisville after visiting with their daughter and sister, Mrs. G. D. Downing and family for a few days.

Miss Olive Adams and Corinne Tatum spent Sunday in Owingsville.

Miss Elizabeth Kinner of Greenup and a student at the University of Kentucky spent Sunday in Morehead with friends.

Miss Anna Lee Martin spent Saturday in Lexington on business.

Mr. and Mrs. Charles Staten spent the week-end in Ashland with friends and relatives.

Miss Jewel Keiser, County Health Nurse at Booneville, spent the week-end here with her parents, Mr. and Mrs. Claude Keiser.

Mr. and Mrs. James Clay spent Tuesday in Catlettsburg on business.

Mr. and Mrs. Sydney Alfrey and Mrs. Claude Crosthwaite spent Sunday in Sandy Hook with Mr. and Mrs. Alfrey's daughter, Mrs. Johnny Greene and Mr. Greene.

Mr. and Mrs. N. E. Kennard spent Sunday in Lexington with friends.

Mrs. H. C. Lewis of this city and her niece, Mrs. Greene Robinson and little daughter, Miss Nanette, spent Saturday and Sunday in Augusta with Captain and Mrs. M. O. Shriver.

Mr. and Mrs. W. H. Hunt of Ashland stopped in Morehead Thursday enroute to Winchester, to visit Mrs. Hunt's parents, Reverend and Mrs. T. F. Lyons.

Mr. Roland Armstrong was a business visitor in Louisville Monday and Tuesday.

Mrs. V. D. Flood and her mother, Mrs. Anna Springer, and Mrs. O. P. Carr were shopping in Ashland on Saturday.

Mr. and Mrs. Arthur Blair and Mr. and Mrs. Jack Helwig and son, Jack, Jr., drove to Paintsville Sunday where they spent the day.

Mrs. G. D. Downing, Mrs. C. T. Warwick and Mrs. C. B. Daugherty spent Wednesday in Mt. Sterling with friends.

Mrs. Collette of Palmouth was in Morehead Wednesday and Thursday visiting his brother, Mr. Harry Goldberg.

Among those who attended the speaking of Judge King Swope at Owingsville Wednesday evening

were: Mrs. J. A. Allen and son, Charles, Dr. and Mrs. A. F. Ellington, Mr. and Mrs. Dudley Caplin, Messrs. Robert Day, Ted Crosthwaite, W. E. Procter, Lew Stewart, and Troy Jennings.

Mr. and Mrs. Everett Amburgey were Sunday guests at Mrs. Amburgey's grandparents, Mr. and Mrs. James Boyd of Brantley.

Mr. and Mrs. Emmett Lewis spent Sunday in West Liberty with friends. Mrs. Russell Becker of Haldeman and Mrs. C. B. McCullough of this city were business visitors in Ashland Monday.

Mr. and Mrs. Elbert Bogges and Mr. Bogges' mother, Mrs. E. Bogges spent a few days of last week in Ashland, with Mrs. E. Bogges' son, Henry Bogges.

Mr. and Mrs. Jesse Caudill were business visitors in Mt. Sterling on Tuesday.

Mr. and Mrs. O. P. Carr were dinner guests of Mr. and Mrs. Roland Stacy of West Liberty Wednesday.

Mr. and Mrs. J. M. Clayton, Mrs. R. L. Hoke and Mr. Robert Moore were business visitors in Lexington Thursday.

Miss Erna Paulson, instructor of the Fifth Grade at Breckinridge Training School was very ill at her home Wednesday.

Rev. G. E. Fern spent Tuesday and Wednesday in Flemingsburg and Ewing on business.

Mrs. W. H. Flood and Mrs. V. D. Flood spent Sunday in Owingsville with friends.

Mrs. B. C. Cornwell of Mt. Sterling was a guest of Mr. and Mrs. Jack Helwig Thursday.

## SWOPE SCORES

(Continued From Page One)

plorable" at the Eastern State Hospital. He declared for old-age pensions, \$12 per capita, continuance but reorganization of the relief department, retention of present school code until it was given a fair trial, free text-books, and a non-partisan fish and game commission set-up.

Dudley Caudill, Republican campaign chairman in Rowan County, introduced Mrs. Ethel Ellington, G. O. P. nominee from the Rowan. Both Hamilton, Powell, Fleming and Mason District, who introduced Judge Swope.

Coming back to the highway department through many places of his speech Swope emphasized a previous statement that, "I will build all the roads that Tom Rhea started and 'Happy' Chandler has promised."

The G. O. P. standard bearer outlined many plans by which he said the state could annually save millions of dollars. He said he would not stand in the way of economic life in local and county governments, especially if it is called for consolidation.

## CHANDLER VISTOR

(Continued From Page One)

tration, since Kentucky is the only state to elect a governor before the presidential election. Therefore, the election of a Republican governor in Kentucky this year would be hailed as a severe blow to the New Deal policies of President Roosevelt.

## POLITICS

(Continued From Page Nine)

By more economy could save more money, than the students, who in many cases are in school on a shoe-string are paying in through increased tuition fees. After all, the schools are created and maintained for the students—not to give jobs to the teachers.

## When A Man's A Man Cozy Show Saturday

Sixteen million Americans of all types and ages have read from cover to cover the fascinating Harold Bell Wright classic, "When A Man's A Man." From all indications, at least three times this number will enjoy the Fox Film adaptation of the masterpiece. It starts a 2 day engagement at the Cozy Theatre on Friday with George O'Brien in the starring role.

Universal appeal is what both book and picture possess. The stereotyped version of the West as peopled by desert rats lurking through the sage brush of the dry lands is abandoned; in place is a vibrant story of modern youth involved in a vital romance.

The setting is an Arizona ranch, to which comes a mysterious Eastern er, short of money, obviously the gentleman, but silent on his part. He is befriended by a hardened Westerner, changes from playboy to rugged "man's man" and finds himself in the dilemma of his lifetime when he realizes that his best friend and himself are rivals for the hand of the same girl.

Before turning to writing, Harold Bell Wright knew the typical American man and woman as few others knew him. Into "When A Man's A Man" he poured his rich knowledge of the West and of the conflicts and romance that arise, far from urban artificialities.

Around George O'Brien are featured Dorothy Wilson and Paul Kelly, in a cast composed of Harry Woods, Jimmy Butler, Richard Carlisle, Clarence Wilson and Edgar Norton. It is a Lesser production, directed by Edward F. Cline.

## HAGGAN SELECTED AS FAIR VICE PRESIDENT

(Continued From Page One)

Henry C. Haggan, Head of the Department of Agriculture, Morehead State Teachers College, has, for many years, been an aid to farmers in this community, as well as every county in eastern Kentucky.

Mr. Haggan is well known through out the state for his agricultural experiments and advice. He has served as head of the Department of Agriculture at Morehead College for many years, during which he has imparted modern methods of cultivation and farm profit-making to the young Republicans.

## TO THE YOUNG REPUBLICANS OF ROWAN COUNTY:

A meeting will be held at the Courthouse in Morehead on Monday, September 30 at 7:30 p. m. for the purpose of forming a Young Republican Campaign Organization. All young Republican voters, both men and women, are cordially invited to attend. ROWAN COUNTY REPUBLICAN CAMPAIGN COMMITTEE. P. D. Pol. Adv.

## B. H. TACKETT

1216 Main Street - MOREHEAD DISTRICT SALESMAN Pioneer & A. Nash Tailoring Co.

hundreds of boys and girls from the farm. It was only fitting that he should be selected an officer of the 5th annual school and agricultural fair, and he was named to the important position of vice-president.

**COZY**  
SATURDAY, SEPT 28—  
**When A Man's A Man**  
WITH GEORGE O'BRIEN  
COMEDY — AMATEUR HUSBAND — HURRAH FOR RHETT  
SUNDAY & MONDAY  
GARY COOPER IN  
**The Virginian**  
3 REELS OF COMEDY  
TUESDAY, OCT. 1  
TOM KEENE IN  
**Crossfire**  
EPISODE 11  
—LAW OF THE WILD

This Bank has always lent its support to every community and civic enterprise that was for the betterment of Morehead, and Rowan County. With this in mind we have attempted to aid in whatever manner possible towards the success of this - the fifth annual Rowan County School and Agricultural Fair.

**PEOPLES BANK OF MOREHEAD**  
28 Years of Service to Rowan County Farmers

*It's always fair weather where we make Chesterfields*

*"Weather machines" in the Chesterfield factories keep the heat and moisture at a steady even level...*

This control of temperature and humidity helps to retain the full flavor and aroma of the tobacco you smoke in Chesterfields. And it has a great deal to do with providing the proper working conditions for the employees who handle the tobacco and operate the Chesterfield machines. Mild ripe tobacco and modern up-to-date factories with proper control of temperature and humidity help to make Chesterfield... the cigarette that's MILDER the cigarette that TASTES BETTER

© 1934, LORAIN & HEARN TOBACCO CO.

SPECIAL FAIR SECTION

# The Morehead Independent MOREHEAD INVITES YOU



To Attend One Of Its Premier Events

The Fifth Annual  
School and Agricultural

# FAIR

Prizes - Exhibits - Fun for All - Constructive and Entertaining

FRIDAY  
SATURDAY **OCT. 4-5**

Feeling that the School and Agricultural Fair is one of Rowan County's civic enterprises and believing that it should receive the support of everyone, the following merchants have cooperated by financially contributing to its success.

C. E. BISHOP DRUG COMPANY  
MIDLAND TRAIL GARAGE  
MIDLAND BAKERY  
BATTSON DRUG STORE  
KY. POWER AND LIGHT CO.  
MIDLAND TRAIL HOTEL  
MCKINNEY SHOE SHOP  
GOLDE'S DEPT. STORE  
DR. A. W. ADKINS  
A. B. MCKINNEY  
THE CITIZENS BANK

J. A. ALLEN  
THE BIG STORE  
J. A. BAYS  
I. G. A. STORE  
SHADY REST SERVICE STATION  
FERGUSON FUNERAL HOME  
HALL AND MILES  
M. F. BROWN'S MARKET  
BLAIR BROS. & COMPANY  
MOREHEAD MERCANTILE CO.  
ELAM—WHEELER

REGAL STORE  
HOGGE AND HOGGE  
THOMAS & RANKIN HATCHERY  
JAMES CLAY  
MOREHEAD S. T. COLLEGE  
CARE—PERRY MOTOR CO.  
VIRGIL H. WOLFFORD  
BROWN MOTOR COMPANY  
L. E. BLAIR INSURANCE  
BARNES—LANE COMPANY  
TOM HOGGE

DR. H. L. WILSON  
THE EAGLES NEST CAFE  
MOREHEAD SERVICE STATION  
MOREHEAD ICE & BOT'G CO.  
BLUE MOON CAFE  
MOREHEAD LUMBER CO.  
MODEL LAUNDRY  
MARTIN BARBER SHOP  
N. E. KENNARD HDWE. CO.  
S. P. CAUDILL  
PEOPLES BANK



# School And Agricultural Fair Premium List

## Fair Association Officers

MRS. LESTER HOGGE, President  
 Vice President  
 Secretary  
 Treasurer

**Superintendents Of Depts.**  
 School Department  
 Agricultural Department  
 Home Department  
 Athletic Department

## Board Of Directors

Mrs. Lester Hogge  
 H. C. Haggan  
 R. H. Kazee  
 Dr. H. L. Wilson  
 Mrs. E. D. Patton  
 Roy E. Cornette  
 Chas. L. Goff  
 Austin Middle  
 Robert S. Bishop

## Fair Committees

**FINANCE COMMITTEE**—  
 ROBERT S. BISHOP, Chairman  
**PUBLICITY COMMITTEE**—  
 W. E. CRUTCHER, Chairman  
**AGRICULTURE DEPARTMENT**—  
 C. L. GOFF, Superintendent  
 S. W. Candill, R. F. McBrayer  
**SCHOOL DEPARTMENT**—  
 ROY E. CORNETTE, Supr.  
 Frank Laughlin, R. B. Candill  
**HOME DEPARTMENT**—  
 MRS. E. D. PATTON, Superintendent  
 Mrs. C. E. Bishop, Gertrude Soper  
 Mrs. Ernest Keith—Mrs. Soble  
 Mrs. A. T. Tatum  
 Flaiding Sewing Candy  
 Mrs. T. F. Lyons  
 Canning  
**ATHLETIC DEPARTMENT**—  
 AUSTIN MIDDLE, Superintendent  
 Clarence Allen, Lawrence Pruby  
**REGISTRATION DEPARTMENT**—  
 R. H. KAZEE, Chairman  
 Mrs. Marie Howard

## General Rules and Regulations

- Exhibitors must make their own choice of class. Specifications are given and must be followed.
- Competition is free to every citizen of Boone County.
- All premiums will be given in cash unless otherwise specified.
- The management will not be responsible for any damage done to or loss of property on grounds. However, we will do our best to protect exhibits.
- All exhibits should be entered in the name of the owner.
- No premiums will be awarded to any article unless the judges deem it worthy. Where there is no competition only half the total amount of the premium may be given.
- Premiums will be given out any time Saturday p. m. in the office.
- Entries may be made Thursday afternoon. All entries must be in by 10:30 o'clock Friday morning.
- No exhibits will be permitted to be removed from the room before Saturday afternoon. The one entering a ring for prizes agrees to leave it until that time.
- Premiums not called for within five days after the fair will revert to the management.
- Entry tags will be furnished. These must be filled out by the one in charge of the room. No exhibit can compete for more than one premium unless otherwise specified.
- Have your catalogue ready and designate ring or class so as to save time.
- Growers and exhibitors should remember that uniformity and general appearance count a great deal in making awards.
- Poultry coops for display of poultry will be furnished free.
- The management reserves the right to interpret all conditions and regulations, and to settle all matters arising out of or incident to the fair.

## Premium List For The School Dept.

### General Program of Events

| FRIDAY  |            |  |
|---|------------|--|
| Registration of Exhibits until                                  | 10:00 A.M. |  |
| Parade Begins at Gymnasium                                      | 10:30 A.M. |  |
| Athletic Events at Jaynes Stadium                               | 1:00 P.M.  |  |
| Old Fiddlers' Contest (Prize to Winner) at High School Building | 7:30 P.M.  |  |
| Headmen and Book and Wing Dance Contest                         | 8:20 P.M.  |  |
| Hog and Chicken Calling Contest                                 | 9:15 P.M.  |  |
| SATURDAY  |            |  |
| Horsehoe Tournament at Jaynes Stadium                           | 10:00 A.M. |  |
| Soft Ball Play-off Series (3 games)                             | 12:00 A.M. |  |
| Awarding of Prizes at Gymnasium                                 | 1:15 P.M.  |  |
| Checking out Exhibits—After                                     | 3:00 P.M.  |  |

### Parade Premium List

|  |        |            |        |
|--|--------|------------|--------|
| Best Original Banner (School)  | \$2.25 | \$1.50     | .75    |
| Best Children in Parade Based on Costume and Enthusiasm              | \$4.00 | \$2.00     | \$1.00 |
| Best Discipline and Display of Colors                                | \$4.00 | \$2.00     | \$1.00 |
| Best School Float  | \$5.00 | \$2.50     | \$1.25 |
| Best Marching Band   | \$5.00 | \$2.50     | \$1.25 |
| Longest P.T.A. Representative in Parade Based on Costume of District |        | Ten Books. |        |

### Athletic Events Prize List

| GIRL'S EVENTS              |        |        |        |
|----------------------------|--------|--------|--------|
| 50 Yard Dash, 12 and Under | \$ .50 | Ribbon | Ribbon |
| 80 Yard Dash, 13 and over  | \$ .50 | Ribbon | Ribbon |
| 75 Yard Dash, 12 and under | \$ .50 | Ribbon | Ribbon |

|                             |        |        |        |
|-----------------------------|--------|--------|--------|
| 75 Yard Dash, 13 and Over   | \$ .50 | Ribbon | Ribbon |
| 100 Yard Dash, 12 and Under | \$ .50 | Ribbon | Ribbon |
| 100 Yard Dash, 13 and Over  | \$ .50 | Ribbon | Ribbon |
| Baseball Throw for Distance | \$ .50 | Ribbon | Ribbon |

### BOYS EVENTS

|                             |        |        |        |
|-----------------------------|--------|--------|--------|
| 50 Yard Dash, 12 and Under  | \$ .50 | Ribbon | Ribbon |
| 50 Yard Dash, 14 and Over   | \$ .50 | Ribbon | Ribbon |
| 75 Yard Dash, 13 and Under  | \$ .50 | Ribbon | Ribbon |
| 75 Yard Dash, 14 and Over   | \$ .50 | Ribbon | Ribbon |
| 100 Yard Dash, 13 and Under | \$ .50 | Ribbon | Ribbon |
| 100 Yard Dash, 14 and Over  | \$ .50 | Ribbon | Ribbon |
| Running High Jump           | \$ .50 | Ribbon | Ribbon |
| Standing Broad Jump         | \$ .50 | Ribbon | Ribbon |
| Running Broad Jump          | \$ .50 | Ribbon | Ribbon |
| Baseball Throw for Distance | \$ .50 | Ribbon | Ribbon |

### Miscellaneous Event-Prize List

|                         |                       |                                   |
|-------------------------|-----------------------|-----------------------------------|
| Soft Ball Play-Off      | \$ .75 to each member | Soft Ball and Bat to winning team |
| Horsehoe Tournament     | \$1.00                | .25                               |
| Pat New's Show (Friday) | .50                   | .25                               |
| Hog Calling Contest     | .75                   | .25                               |
| Chicken Calling Contest | .75                   | .25                               |
| Old Fiddlers' Contest   | \$1.00                | .50                               |
| Dancing Contest         | \$1.00                | .50                               |

## Division of School Exhibits

NORMA POWERS, Division Supervisor

### Kindergarten and Beginners Department

Elizabeth Layne - Sibbie Caskey, Committee.

|                                    |        |     |        |
|------------------------------------|--------|-----|--------|
| Ring 101 Best clay modeling        | \$ .50 | .25 | Ribbon |
| Ring 102 Best booklet (any kind)   | \$ .50 | .25 | Ribbon |
| Ring 103 Best handwriting specimen | \$ .50 | .25 | Ribbon |
| Ring 104 Best free hand drawing    | \$ .50 | .25 | Ribbon |
| Ring 105 Best construction project | \$ .50 | .25 | Ribbon |

### Emergency Education Department

Oscar Patrick - Katherine Jackson, Committee.

|                                      |        |     |     |
|--------------------------------------|--------|-----|-----|
| Ring 106 Best academic display       | \$1.00 | .75 | .50 |
| Ring 107 Best domestic art display   | \$1.00 | .75 | .50 |
| Ring 108 Best industrial art display | \$1.00 | .75 | .50 |

### Elementary School Department

Posters and Maps

|   |        |     |        |
|---|--------|-----|--------|
| Ellen Higgins and Mae Meadows, Committee. |        |     |        |
| Ring 110 Best health poster               | \$ .50 | .25 | Ribbon |
| Ring 111 Best nature poster               | \$ .50 | .25 | Ribbon |
| Ring 112 Best history poster              | \$ .50 | .25 | Ribbon |
| Ring 113 Best poster (other)              | \$ .50 | .25 | Ribbon |
| Ring 114 Best poster (illustration)       | \$ .50 | .25 | Ribbon |

|   |        |     |        |
|---|--------|-----|--------|
| Ring 115 Best hand drawn map of Kentucky (by a pupil)   | \$ .50 | .25 | Ribbon |
| Ring 116 Best salt map of United States (by school or class)  | \$1.00 | .75 | Ribbon |
| Ring 117 Best product map of U. S.  | \$1.00 | .75 | Ribbon |
| Ring 118 Best hand drawn map of Boone County, showing towns, main roads and the streams (by pupil or class) | \$ .75 | .50 | Ribbon |

## Construction Work

Golda Dillon and Beulah Williams, Committee.

|  |        |        |        |
|--|--------|--------|--------|
| Ring 119 Best free hand drawing                                  | \$ .25 | Ribbon | Ribbon |
| Ring 120 Best water color drawing                                | \$ .25 | Ribbon | Ribbon |
| Ring 121 Best cut paper picture grade 1-3                        | \$ .25 | Ribbon | Ribbon |
| Ring 122 Best clay modeling grade 1-4                            | \$ .50 | .25    | Ribbon |
| Ring 123 Best book and map table doll, grade 1-4                 | \$ .50 | .25    | Ribbon |
| Ring 124 Best paper basket                                       | \$ .50 | .25    | Ribbon |
| Ring 125 Best hand painted vase grade 5-8                        | \$ .50 | .25    | Ribbon |
| Ring 126 Best construction activity illustrating a story or poem | \$ .50 | .25    | Ribbon |
| Ring 127 Best map and table project display                      | \$1.00 | .75    | .50    |

### Booklets

Ella Mae Rogers and Mabel Alfrey, Committee.

|   |        |        |        |
|---|--------|--------|--------|
| Ring 128 Best health booklet grade 1-3                      | \$ .25 | Ribbon | Ribbon |
| Ring 129 Best health booklet grade 4-8                      | \$ .25 | Ribbon | Ribbon |
| Ring 130 Best animal booklet grade 1-3                      | \$ .25 | Ribbon | Ribbon |
| Ring 131 Best animal booklet grade 4-8                      | \$ .25 | Ribbon | Ribbon |
| Ring 132 Best collection of wild pressed flowers in booklet | \$ .50 | .25    | Ribbon |
| Ring 133 Best arithmetic booklet grade 1-3                  | \$ .25 | Ribbon | Ribbon |
| Ring 134 Best arithmetic booklet grade 4-8                  | \$ .25 | Ribbon | Ribbon |
| Ring 135 Best bird booklet of grade 1-3                     | \$ .25 | Ribbon | Ribbon |
| Ring 136 Best bird booklet of grade 4-8                     | \$ .25 | Ribbon | Ribbon |

## Added Features.

|                                       |        |     |        |
|---------------------------------------|--------|-----|--------|
| People who have been married long—out | \$1.00 | .50 | Ribbon |
| Longest family on grounds             | \$1.00 | .50 | Ribbon |
| Best baby (boy or girl)               | \$1.00 | .50 | Ribbon |
| Best recent newsworthy                | \$1.00 | .50 | Ribbon |

**PLUMBING & ELEC. SHOP**  
 Work Guaranteed  
 Phone 274

**A. F. ELLINGTON**  
 Dentist  
 Phone 25 Morehead, Ky.

**BLUE MOON CAFE**  
 Good Food

Tastily Prepared  
 Priced Right  
 Pleasant Atmosphere  
 Real Service

**AMOS 'N ANDY**  
 Good Food  
 Recreation

# COLLEGE THEATRE

Starts 1935-36 Season With Great Shows

Outstanding Productions From United Artists, R. K. O., Columbia and Other Producers Will Be Featured.

### PROGRAMS WILL INCLUDE:

- 'Love Me Forever' With Grace Moore
- 'Thunder In the East' With Charles Boyer
- 'Shoot the Chutes' With Eddie Cantor
- 'Modern Times' With Charlie Chaplin
- 'Dark Angel' With Fredric March
- 'Top Hat' Said to be the biggest box office attraction ever produced.
- 'Last Days of Pompei'
- Kipling's 'Soldiers Three'
- Cecil Rhodes 'The Empire Builder'
- 'The Transatlantic Tunnel'
- The Only Picture of the Year by 'George Arliss' Not Yet Named.

The Short Subjects will include Mickey Mouse and Silly Symphony reels in beautiful technicolor as well as lovely musical melodies and up to the minute news reels

NATURE STUDY

Table with 3 columns: Ring number, Description, and Ribbon status. Items include 'Best collection of native plants for home and school' and 'Best collection of butterflies and moths by school'.

Manual Training

Table with 3 columns: Ring number, Description, and Ribbon status. Items include 'Best birdhouse', 'Best bookends', 'Best willow basket', etc.

High School Department

Hilbreth Maggard and Grace Craftswain, Committee.

Drawing

Table with 3 columns: Ring number, Description, and Ribbon status. Items include 'Best hand drawn map of the United States' and 'Best hand drawn map of Rowan County'.

Composition

Table with 3 columns: Ring number, Description, and Ribbon status. Items include 'Best essay "An interesting event in the history of Rowan County"' and 'Best original poem'.

Division of School Exhibits.

Mrs. E. Swope, Chairman

Table with 3 columns: Ring number, Description, and Ribbon status. Items include 'Best home made light bread', 'Best sugar food cake', 'Best decorated cake', etc.

CANDY

MRS. A. T. TATEM, Chairman

Table with 3 columns: Ring number, Description, and Ribbon status. Items include 'Best plate of fudge', 'Best plate of taffy', 'Best plate of soft cream', etc.

Canning

MRS. T. F. LYONS, Chairman

Table with 3 columns: Ring number, Description, and Ribbon status. Items include 'Best can Peas', 'Best can of Apples', 'Best can of Blackberries', etc.

Sewing and Handwork

MRS. ERNEST JAYNE and MRS. SAMIE FIELDING

Table with 3 columns: Ring number, Description, and Ribbon status. Items include 'Best Child's Dress', 'Best hand made appliqued quilt', 'Best old quilted quilt'.

Commissioner's Sale

ROWAN CIRCUIT COURT FEDERAL LAND BANK OF LOUISVILLE

VS. COMMISSIONER'S SALE NOKIE D. JOHNSON, ET AL.

By virtue of a judgment and order of sale of the Rowan Circuit Court, transferred at the June, 1935, term, in the above-styled case for the following:

\$22.50 due January 1, 1935, \$22.50 due July 1, 1935, \$32.50 due January 1, 1934, \$32.50 due July 1, 1934, \$32.50 due January 1, 1935, \$26.70 due March 25, 1934, \$18.00 due December 15, 1935, and \$88.00 due January 1, 1935.

with interest on each of said sums at the rate of 5 1/2-5% per annum from the aforementioned respective dates thereof until paid, and its costs herein, I shall proceed to offer for sale, at the courthouse, above in Rowan County, to the highest bidder, at public outcry, on Monday, the 7th day of October, 1935, at one o'clock p. m. or thereabouts (being Circuit Court Day) upon a credit of six and twelve months, the following described property to-wit:

"Containing 77 5/16ths acre situated five miles northwest from Morehead on the North Fork and Hilda Road, and being a certain tract or parcel of land lying in Rowan County, Kentucky, on the waters of North Fork of Triplett Creek, beginning at a rock stone on the north edge of the North Fork Road and in the Hilda Road; thence with Hilda Road and line of G. M. Hall and F. Dalton N. 25 W. 120 poles to a chestnut oak tree on top of hill and corner to said Hilda Road, thence with said Hilda's line and with top of hill N. 35 1/4 E. 26 poles, S. 66 E. 20 6-11 poles, S. 19 1/2 E. 23 poles; thence S. 45 8-10th pole, to center of North Fork Road, with said road 47 1/2 W. 24 poles, S. 49 1/4 W. 22 6-10th pole to branch; thence down branch S. 17 1/4 E. 23 poles to a small spruce tree on corner to G. M. Lofton, S. 32 3/4 W. 12 9-10 poles to corner of the 22nd. Said tract with same N. 20 W. 23 9-10 poles to beginning, containing 77 5/16ths acre, more or less."

On application showed to produce the same of record so ordered to be

Table with 3 columns: Ring number, Description, and Ribbon status. Items include 'Best quilted quilt', 'Best hosiery sock', 'Best embroidered handkerchief or buffet set', etc.

Flowers

Table with 3 columns: Ring number, Description, and Ribbon status. Items include 'Best vase of Dahlias', 'Best vase of Dahlias specimen', 'Best vase of mixed flowers', etc.

FIELD CROPS

Table with 3 columns: Ring number, Description, and Ribbon status. Items include 'Best corn, best 1d ears', 'Best tobacco, best 5 stalks', 'Best Kerona Loperdora hay', etc.

Kentucky's Next Governor



Hon. King Swope

Extend his congratulations to the school teachers, fair officers, farmers and participants in the School and Agricultural Fair of Rowan County.

Judge Swope, himself a farmer, has always been a leader in civic enterprises as well as politics and business His Record Speaks For Itself He invites you to review his platform He asks that you study his record.

Make Kentucky Clean With KING SWOPE

As Your Governor This advertisement paid for by King Swope's Friends, Supporter and Admirers in Rowan County.

For the purchase price the purchaser must accept bond with guarantee.

proceed survey, bearing legal interest from the date of said until paid and having the force and effect of a judgment. Before making said sale the Master Commissioner shall advertise under seal to the time and place, and publish it as directed by the order herein entered, and will first have said property appraised in conformity with the judgment herein entered.

Table with 3 columns: Ring number, Description, and Ribbon status. Items include 'Ring 315 Golden Delicious, best 10', 'Ring 316 Red Delicious, best 10', etc.

POULTRY A pen shall be composed of five or five pullets and shall be judged on a production basis.

Table with 3 columns: Ring number, Description, and Ribbon status. Items include 'Ring 321 Pen of Leghorns', 'Ring 320 Pen of White Rocks', etc.

4-H Club Department

The following rings are for 4-H Club members only. Club members may enter entries from their projects only. Such entries may be entered in the respective rings in other sections of the Fair Catalogue.

Table with 3 columns: Ring number, Description, and Ribbon status. Items include 'Ring 324 Potatoes, best 10', 'Ring 325 Tobacco, best 5 stalks', 'Ring 326 Corn, best 10 ears', etc.

Curio Department

Table with 3 columns: Ring number, Description, and Ribbon status. Items include 'Ring 340 Best exhibit rare Indian Articles', 'Ring 341 Oldest garment, costume, etc.', 'Ring 342 Most interesting old books, newspaper, etc.', etc.

Advertisement for Morehead Ice & Boig Co. with text: 'Let Us Forget We Got A Living To Make Since You Mentioned It' and 'WE HAVE GOTTEN INTO THE HABIT OF SELLING COAL. TRY TO PUSH THIS BURNING QUESTION ON US—SEE IF WE WILL TAKE YOU UP.' Includes address: 'Morehead Ice & Boig Co.'

# Officers Welcome To Farmers, Children and Culinary Artists

## MORE EXHIBITS, BETTER PRIZE RING OFFERED AT THIS YEAR'S FAIR MEET

For the second consecutive year, the Rowan County School and Agricultural Fair Association, wisely placed the leadership in capable hands. Mrs. Lester Hogge, of Morehead, who successfully was at the helm of the event in 1934, is again president of the fair.

Mrs. Hogge, with the assistance of various fair officers and committees, has worked out a note-worthy program for this year's fair—one that will allow every person in Rowan County, who so desires, to participate and have an active part. One of the prime requisites of a fair is that it be held so that every one may participate. It can truthfully be said of this year's event that there is a place for the entrance of exhibits from any man, woman or child in the county.

Mrs. Hogge extends a note of sincere welcome to all people in this county, not only to attend the fair, but enter exhibits in the various classes, and take an active part.

The secretary of the fair is Rev. R. H. Kazee, Pastor of the Morehead Baptist Church. There is perhaps no one who has worked more faithfully than he to secure a successful 2 day meet. Rev. Kazee has been an assistant in every department.

Dr. H. L. Wilson, Morehead dentist, is treasurer for the second year. Mr. Wilson's high interest in the fair has been manifested on numerous occasions and he has not been found lacking in either ability or desire to do his share of the work that is necessary for a successful 1935 fair.

An article concerning the fair should omit the names of 2 of its officers—in fact 2 of its most important ones. They are Superintendent Rev. E. Cornette, in charge of the school department, and County Agent C. L. Goff, who will direct the important agricultural side of the fair. After all the fair is really made up of these two departments

with many tangents. Mr. Cornette and Mr. Goff have given hours of work toward the fair, and it is only right that they should be given full credit for the splendid exhibits that will be on display.

One of Morehead's outstanding ladies—Mrs. E. D. Patton—was selected to head the Home Department. This part of the fair will perhaps attract considerable attention, especially so with the pleasing aroma of cakes, candies, pastries and the many other good things that only mothers can concoct.

Austin Riddle, Coach of the Morehead High School is head of the department of athletics—another important feature of the fair. The athletic department has been enlarged and will include more participants this year.

The complete list of fair officers is given on page 2 of this section.

## HOUSEWIVES HAVE PLACE IN EXHIBITS

By MRS. E. HOGGE

The cooking and baking department for the 1935 Fair is practically the same as it has been for the past two years, with the exception of a few added rings and, I hope a much greater show of enthusiasm. From all indications, the women of Rowan County will this year make this department one of the outstanding sources of pride to the fair, with practically every home having an entrant of some kind. We certainly extend to everyone a cordial welcome and urge every housekeeper to take part in this the 5th annual Rowan County School and Agricultural Fair.

ALL EVENTS PERTAINING TO THE FAIR WILL BE FOUND IN THIS SECTION OF THE MOREHEAD INDEPENDENT.

## Robert Bishop, Thanks Merchants For Support

By ROBERT E. BISHOP

Chairman Finance Committee

As we draw close to the fifth annual School and Agricultural Fair, the finance committee wishes to thank those people who have made it possible through their financial aid to give the people a good fair. Those who have advertised were prompted to by reason of advertising and they were interested in giving to the people of Rowan County a fair of which they may well be proud. The contributors have helped make possible a successful fair, prompted solely by a feeling of public spirit.

The financial committee plays only a small part in financing the fair; they act only as an agent for the public spirited business firms and individuals. Every citizen in the county should consider that is their fair and work to make each year better than the previous one. The important part to the fair is the attendance, so if you do not have entries come and see what your fellow citizens have grown and made. The officers of the Fair Association have worked hard to arrange the fair so you will enjoy yourselves. Attend both days.

## FAIR ORIGINATOR DISCUSSES MEET

By LYDA MESSER CAUDILL

A cordial welcome awaits the citizenry of Rowan County, both young and old, at the School and Agricultural Fair which will be staged Friday and Saturday, October 4th and 5th at Morehead Consolidated School Gymnasium and Jayne Memorial Stadium. Come and bring your families to see the display and get your exhibits in for registration early and avoid the rush and take no chances on being late with your ex-

hibits to be registered for the prize-winning contest.

This is the fifth School and Agricultural Fair to be held in Rowan County. The first fair was organized and an interest created in the various District School Meets of Rowan County. The local displays in the various districts and the athletic programs for rural children led up to the original Fair, and the first county-wide scholastic and athletic program where the entrants were sent to participate in the state meets. Another important step was the forerunner of the Fair which was a one-day display along with the County Sing and Spelling match at the Courthouse six years ago. This year was unanimously voted as the greatest Community Day in the history of Rowan County and one to be perpetuated. The fair has grown year by year, some new departments being added and this year some new divisions of school exhibits are kindergarten and Beginners Department, Emergency Education Department and other new features. There are many curious in the county, old stories true to life, and much history that should be preserved.

The catalog is suggestive of something fine and a very excellent display this year, it a real souvenir for your school and your home and it contains much valuable information aside from the regular program.

## ART TO PLAY PROMINENT PART

By MRS. BEULAH WILLIAMS

As the School Fair is just around the corner the school children are, no doubt, enthusiastic over one subject in particular—that is Art.

In planning the Construction work for the fair let us not forget some of the fundamental principles upon which modern art teaching is based. As we know no subject in the elementary curriculum has been changed more during recent years than Art. The old criterion for success

was accuracy. This is no longer the case. To draw a house to look like a real house or to draw a cat to look like a real cat was the idea. Color played a minor part and design an even smaller part. Now design and color hold the center of the stage. One great influence that has brought that about today is the fact that primary teachers realize that the child learns art by enjoying the process and are not concerned with the result as they once were. The teacher should strive to get in mind that more important than results, more important than standards, more important than grade division, is the individual student and this individual has the right to develop his own individuality. Greater art appreciation is gained when the child is allowed to paint, draw, or color in his own style.

The teacher should inspire but not dictate to the child in his art work for the fair. This can be done by praising the good points and occasionally suggesting a way to improve his work. Adverse criticism should be sparing. When the child feels that he is succeeding, he is inspired to go on. In other words let the display at the fair be the child's own individual work, free from the "finishing touches" put on by the teacher or an older child.

Another item which is vitally important is originality. Refrain from copy work. Bring something new, something that has not been repeated year after year, something that the child reproduces from his own mental pictures, free from any dictation or outside influence.

If we work for these two things in particular—ORIGINALITY and INDIVIDUALITY our fair displays will have a greater chance of taking home the blue ribbons on our construction work.

## KAZEE EXPLAINS REGISTRATION

By REV. E. H. KAZEE

Secretary

All who enter exhibits in the fair should, by all means, read the catalogue carefully, especially the Rules and Regulations. Then they should strictly comply with the rules and in this way help make the fair successful. We give here a few pointers for the benefit of entrants.



Rev. E. H. Kazee

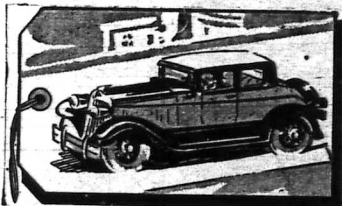
1. Read the catalog and decide for yourself in what ring you wish to enter your exhibits, if you make a mistake the secretary
2. If convenient, help us by bringing in your exhibits Thursday afternoon and evening and register them in advance.
3. Don't believe what just "anybody" says about anything. Get it from the official source. Many people like to tell you a lot of things they don't know.
4. The Fair Association has no one to grind. If a question arises they will decide it impartially. Be a good sport and take their decision. There will be another fair next year.
5. Running the fair is hard work; especially being Secretary. Most of our work is done during the fair, and we are constantly rushed. If you are considerate toward us you will get better service.
6. Read the signs at the fair. They will tell you where to go and what to do. Follow them and be as little trouble as possible.
7. On Friday morning there is always a rush. Come early and avoid it. If you get in late wait your turn patiently. We will have been there long before you will have come.
8. Don't criticize the judges. They may know as much about their work as you do.
9. Here's a big, hearty welcome to everyone. This is your Fair even though we are running it. Make it the best one yet.

# USED CARS

Completely Reconditioned  
From Radiator to rear Bumper

## At Close-out Prices that are Really Close-outs

YOUR INSPECTION  
- MEANS -  
YOUR SATISFACTION



PRICES THAT AGREE  
WITH ANY PUR-  
CHASER. MANY  
MAKES OR  
MODELS

### If You Are In the Market For A Used Car It Is To Your Advantage to Look Over Our Bargains - - -

### A Few Of The Many Used Cars On Our Floors

- 1931 Chevrolet Coupe
- 1930 Chevrolet Coupe - Rumble Seat
- 1933 Ford V-8 Coupe - Rumble Seat
- 1933 Chevrolet 1 1-2 ton Truck

- 1931 Dodge Sedan
- 1929 Chevrolet Roadster
- 1931 Chevrolet Sedan
- 1933 Dodge 1 1-2 Ton Truck

ACT NOW  
WHILE THEY  
LAST

## Midland Trail Garage

Next Door To Postoffice

Ask For A  
Demonstration  
- Now -