

Spring 2006

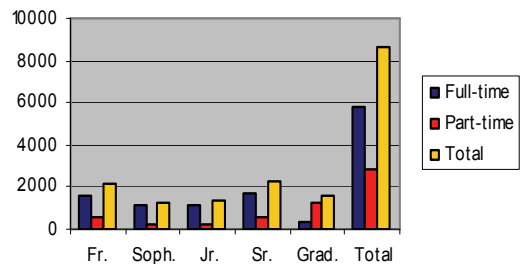
...In a Nutshell...



Spring 2006 Enrollment

Classification	Full-Time	Part-Time	Total
Freshmen	1,539	586	2,125
Sophomores	1,117	186	1,303
Juniors	1,103	267	1,370
Seniors	1,716	533	2,249
Graduates	324	1,254	1,578
TOTAL	5,799	2,826	8,625

Full-Time & Part-Time Enrollment



Special Points of Interest

- 243 New Transfer Students
- Approximately 450+ faculty (full-time and part-time) are teaching 2,287 courses

Spring 2006 Off-Campus Enrollment

Site	Number of Classes		Undup. Headcount	*FTE
	On-Site	DL		
Ashland	34	25	369	152.19
Hazard	4	0	40	13.25
Hindman	0	4	13	2.94
Jackson	11	17	112	45.57
Maysville	1	0	17	2
Mt. Sterling	45	13	482	183.25
Pikeville	1	0	24	7
Prestonsburg	51	28	517	213.44
West Liberty	43	14	365	162.50
Wolfe Co.	1	0	18	3.38
Menifee Co.	2	0	19	3.56
Somerset	0	1	2	.38
Internet	0	137	1,731	519.83
KET	5	0	93	21.56
TOTAL	198	239	3,802	1,330.85

Source: Office of Academic Outreach & Support, 04/05/06
*Full-Time Equivalency

Retention Rates Fall 2005 to Spring 2006 By CPE Classifications

CPE Classification	Fall 2005	Spring 2006	% Retained
FTFR	1,300	1,105	85%
Freshmen (All)	2,230	1,813	81%
Sophomores	1,296	1,155	89%
Juniors (*-16)	*1,372	1,246	**92%
Seniors (*-307)	*2,003	1,543	**91%
UG-Nondegree	230	103	45%
Auditor	6	5	83%
High School	266	100	38%
Post Baccalaureate (2nd UG Degree Seekers)	70	55	79%
Graduate—Degree (*-65)	*1,063	772	**77%
Graduate—Nondegree	526	291	55%
TOTAL Classifications	9,062	7,083	**82%

*Received degrees in Fall 2005 and did not re-enroll

**Adjusted for Fall 2005 degree non-returnees

Source: Fall and spring enrollment reports to CPE (AIMS student file)



Spring 2006 data preliminary
As of April 4, 2006