

LINE OF \$20 TO \$100 FOR CUTTING.

Library X University of Kentucky Lexington, Ky.

18,000 Readers

STATUTES ARTICLE 1207

MOREHEAD NEWS

Formerly Rowan County News - Name Changed January, 1963

10c On Newsstands

Volume No. 80

MOREHEAD, KENTUCKY, THURSDAY MORNING, JUNE 27, 1963

Member National Editorial Association

Number Twenty-Six

Authorization Given Cave Run Reservoir

The House of Representatives authorized Monday in Washington \$150,000 for final design and planning of Cave Run Reservoir...

Monday's voice vote insured that Cave Run, would not be delayed as the fiscal year expires July 1.

Three other Kentucky projects were also included in the go-ahead instruction to the U. S. Corps of Engineers.

The timetable calls for some construction on Cayton Reservoir during the next fiscal year.

Grayson Reservoir is expected to cost over \$30 million, while Cave Run may need about double that appropriation before completion.

Post Office At Clearfield Gets ZIP Code 40313

The Post Office Department this week announced the ZIP code number 40313 for the Clearfield post office.

Clearfield Postmaster, Bethel Hall, said that the ZIP code is expected to speed mail by as much as 20 hours.

Turn to last page, this section

News To Be Published Day Early Next Week

Because of the Fourth of July holiday next Thursday, the next week's issue of the Morehead News will reach most subscribers a day early.

Mrs. Louada Messer, 68, Passed Away

Death came Monday to Mrs. Louada Messer at her home on Liberty Street. She was 68.

A daughter of the late James and Susan Parrish Moore, she was born May 15, 1895. On Aug. 9, 1915, she was married to W. M. Messer, who survives.

Other survivors include a brother, Millard Moore, Morehead, and four sisters, Mrs. Lucy Messer, Christine Calvert, Mrs. Ailene Wilson, and Mrs. Ruth-James, all of Morehead.

Gravestone Rites Held For Paula M. Black

Gravestone funeral services for Paula Marie Black, infant daughter of Paul and Edith Wilson Black, were held Friday in Christian church.

The child was dead at birth last Thursday.

Turn to last page, this section



Discuss Regional Development

MEETING OF MINDS—Morehead State College President Adron Doran (center) met with leaders from throughout Eastern Kentucky last week at the region's State Park to discuss development of the region with Franklin D. Roosevelt, Jr. (left), Undersecretary of Commerce and Development, and other officials.

Commission of which he is a member. Also attending from Morehead were Mayor Eldon T. Evans; Bill Whitaker, manager of WMOR and Ray Morehead, assistant to the president for public affairs at MSC. W. E. Crutcher, publisher of the Morehead News, was scheduled to attend but was in Washington testifying before a Congressional hearing at the request of Congressman Carl D. Perkins.

'A La Nuda'

A Farmers man whom county officials say has a habit of roaming the county jail on the other two counts.

County Judge W. C. Flannery set bond at \$1,000 on the indigent exposure and breaking and entering counts, after Mrs. Sabrina Thomas told the court that Brown had come home through a window.

She related that Brown then came around the house with overalls on, but removed them, leaving him clad only in the jacket, climbed up on two barrels and raised a side window.

Deputy Sheriff Clyde White arrived shortly afterward and captured Brown after a quarter-mile chase through a swamp and into a field near the highway.

Tendency To Shed Clothing Brings Man Afoul Of Court

disorderly an dwas bound over to the grand jury on the other two counts. County Judge W. C. Flannery set bond at \$1,000 on the indigent exposure and breaking and entering counts, after Mrs. Sabrina Thomas told the court that Brown had come home through a window.

Deputy Sheriff Clyde White arrived shortly afterward and captured Brown after a quarter-mile chase through a swamp and into a field near the highway.

He did, however, plead guilty to being drunk and was given the 30-day jail term. Brown said he had been to Mt. Sterling earlier in the evening and had ridden a freight train from there back to Farmers. After that, he asserted, he didn't remember anything.

Second In Conference Series Set

Eugene Howard, one of the nation's outstanding high school administrators, will be the featured speaker at the Principals' Conference on the Morehead State College campus today (Thursday).

Housing Commission Meets Today

Morehead's Municipal Housing Commission meets this (Thursday) afternoon at 4 o'clock to make decisions on several public matters concerning the new housing project on which construction is starting.

Among the matters to be discussed will be issuance of about \$400,000 in bonds to finance the 30 units. These bonds should be written by the Home and Housing Administration, Atlanta district office.

Members of the Commission will be: E. Crutcher, chairman; W. H. Rice, Hubert Allen and William H. Layne, Executive Director is W. LeGrand Jayne.

Morehead applied for the housing contract five years ago, but did not let contracts until last month. Lack of federal funds, and priority to other communities and citizens, delayed the Morehead program.

Wolfe County Farmer Drinks 'Shine, Dies

Arnold Brashear Jr., 24, Wolfe County farmer, died Sunday night after reportedly drinking a quantity of moonshine.

Wolfe County Coroner Lewis R. Porter said Brashear's grandparents, and Mrs. W. M. Brashear, claimed the victim drank "a bottle of moonshine" without stopping about 6:30 o'clock Sunday night.

They said that Brashear was stricken ill immediately after drinking the contents of the bottle and they rushed him to the County Cattlehead in Campton where he died after pronounced dead on arrival.

Two Lumber Firms Fined By Swinford

Two Rowan County businesses, and an individual, have been fined a total of \$1,800 in Federal Court. Cletious M. Swinford, U. S. District Judge, entered his ruling in plea of guilty to violation of the Interstate Commerce Act.

The firm of C. C. Wells and Sons, Inc., was assessed \$200 and Judge Mac Swinford fined the firm \$200 each for failure to require drivers to maintain vehicle condition reports.

The government charged that Epperhart engaged in the operation of a contract carrier without a permit and that Wells Lumber Company, "aided and abetted" the operation.

Heart Attack Claims Dr. I. M. Garred, 57

Dr. I. M. Garred, who tended the needs of the sick in this area for more than 30 years, died last week of a heart attack at the St. Joseph Hospital, Hillside.

He had a heart condition for more than 10 years, Dr. Garred said. He was struck by a heart attack while on his way to work at his home in Lexington, where he was called to the Lexington hospital where he died about 11:30 a.m. Tuesday.

A member of a prominent Eastern Kentucky family which included four of Kentucky's best doctors, Dr. Garred served this area as a general practitioner from the time he completed his internship at Good Samaritan Hospital in Lexington in 1933.

He was graduated from the University of Kentucky in 1928 and from the University of Louisville Medical School in 1932.

Dr. Garred was a member of the First Methodist Church of Morehead and the American Medical Association, the Kentucky Medical Association, the Rowan County Medical Society and had served as chairman of the Rowan County Board of Health.

Other survivors include three sisters, Mrs. Rice K. Braly, Ashland, Mrs. and Mrs. Lon Arrington, Louisville, and two brothers, Dr. E. W. Garred, Catlettsburg, and Dr. U. V. Garred, Whiting, Iowa.

Funeral services were held Saturday at 10 a.m. at the First Methodist Church. Burial was in the cemetery at Ashland.

Two Mishaps Happen At Same Location

The only two Rowan County automobile accidents investigated during the past week by state police, happened at the same location and within two hours of each other.

A wet stretch of highway was believed to have contributed to both accidents.

Both came about at the intersection of US 60 and Kentucky 80, at Farmers last Tuesday morning. State police records showed the first had fallen earlier.

The first involved two out-of-state cars. One, driven by a workman, Frederick L. in a word of 1958, was struck in the rear by a car driven by Maxine Montgomery, 36, of Marietta, Ga.

The Montgomery woman said she applied her brakes after the 1958 car made a right turn into a parking area ahead of her and that she skidded, striking the vehicle in the back.

There were no injuries in the 6:15 a.m. mishap. The second accident occurred 45 minutes later, in the same spot, a pickup truck, owned by Farnell Martindale, 54, of Morehead, was struck in the rear by a car driven by H. E. Doying, 70, of Kansas City, Mo.

The Doying vehicle started to turn into the same parking area when it was hit by the Martindale truck. Doying said he did not give a signal of his intentions.

There were no injuries. Both accidents were investigated by Trooper Marvin Jennings.

Industry Seekers Purchase 72-Acre Mt. Sterling Plot

Mt. Sterling Industrial Foundation Saturday purchased a 72-acre tract of land on the Lewis Field which will be developed as factory sites.

The land was purchased from George W. Foley for \$45,000. The tract has a frontage on the Chesapeake and Ohio Railroad. It is owned by James W. Smith, publisher and editor of the Lewis Field, who was elected the first president of the foundation at a meeting in the town hall immediately after the purchase.

He had a heart condition for more than 10 years, Dr. Garred said. He was struck by a heart attack while on his way to work at his home in Lexington, where he was called to the Lexington hospital where he died about 11:30 a.m. Tuesday.

He was graduated from the University of Kentucky in 1928 and from the University of Louisville Medical School in 1932.

Dr. Garred was a member of the First Methodist Church of Morehead and the American Medical Association, the Kentucky Medical Association, the Rowan County Medical Society and had served as chairman of the Rowan County Board of Health.

Other survivors include three sisters, Mrs. Rice K. Braly, Ashland, Mrs. and Mrs. Lon Arrington, Louisville, and two brothers, Dr. E. W. Garred, Catlettsburg, and Dr. U. V. Garred, Whiting, Iowa.

Funeral services were held Saturday at 10 a.m. at the First Methodist Church. Burial was in the cemetery at Ashland.

Morehead's St. Claire Hospital Will Receive Its First Patient On Monday

St. Claire—Morehead's modern 150-bed capacity hospital will receive its first patient Monday.

The three-story structure, known as St. Claire Medical Center, was formally dedicated with impressive ceremonies laying and dedication ceremonies Sunday afternoon.

Dr. William B. Willard, vice-president and Dean of the University of Kentucky Medical Center, expressed the theme when he dedicated the hospital in his prayer, Monsignor Towell.

"The eyes of the medical profession in Kentucky... yes, in the United States... are looking on you today, and your future planning and progress will be closely observed."

Dr. Willard was referring to the almost without precedent manner in which St. Claire Medical Center will be conducted.

Sisters of Notre Dame will administer the hospital. But, in order to attract doctors and specialists to Morehead, a center for medical education, a center for research, and a center for the education of the dedicated and the pictures, appear elsewhere in this edition.

Funeral services were held Saturday at 10 a.m. at the First Methodist Church. Burial was in the cemetery at Ashland.

St. Claire's Cornerstone Blessed

SEEKS DIVINE AID—The Right Reverend Charles A. Towell, Diocesan Director of Hospitals, Covington, blesses the cornerstone at Morehead's St. Claire Hospital. In his prayer, Monsignor Towell invoked the blessing not only on the structure, but for the people who were instrumental in building it, who will work in it and those who will be patients in the \$1,100,000 institution.

invoked the blessing not only on the structure, but for the people who were instrumental in building it, who will work in it and those who will be patients in the \$1,100,000 institution.

invoked the blessing not only on the structure, but for the people who were instrumental in building it, who will work in it and those who will be patients in the \$1,100,000 institution.

invoked the blessing not only on the structure, but for the people who were instrumental in building it, who will work in it and those who will be patients in the \$1,100,000 institution.

invoked the blessing not only on the structure, but for the people who were instrumental in building it, who will work in it and those who will be patients in the \$1,100,000 institution.

invoked the blessing not only on the structure, but for the people who were instrumental in building it, who will work in it and those who will be patients in the \$1,100,000 institution.

invoked the blessing not only on the structure, but for the people who were instrumental in building it, who will work in it and those who will be patients in the \$1,100,000 institution.

St. Claire's Cornerstone Blessed

invoked the blessing not only on the structure, but for the people who were instrumental in building it, who will work in it and those who will be patients in the \$1,100,000 institution.

invoked the blessing not only on the structure, but for the people who were instrumental in building it, who will work in it and those who will be patients in the \$1,100,000 institution.

invoked the blessing not only on the structure, but for the people who were instrumental in building it, who will work in it and those who will be patients in the \$1,100,000 institution.

invoked the blessing not only on the structure, but for the people who were instrumental in building it, who will work in it and those who will be patients in the \$1,100,000 institution.

invoked the blessing not only on the structure, but for the people who were instrumental in building it, who will work in it and those who will be patients in the \$1,100,000 institution.

invoked the blessing not only on the structure, but for the people who were instrumental in building it, who will work in it and those who will be patients in the \$1,100,000 institution.

invoked the blessing not only on the structure, but for the people who were instrumental in building it, who will work in it and those who will be patients in the \$1,100,000 institution.

St. Claire's Cornerstone Blessed

invoked the blessing not only on the structure, but for the people who were instrumental in building it, who will work in it and those who will be patients in the \$1,100,000 institution.

invoked the blessing not only on the structure, but for the people who were instrumental in building it, who will work in it and those who will be patients in the \$1,100,000 institution.

invoked the blessing not only on the structure, but for the people who were instrumental in building it, who will work in it and those who will be patients in the \$1,100,000 institution.

invoked the blessing not only on the structure, but for the people who were instrumental in building it, who will work in it and those who will be patients in the \$1,100,000 institution.

invoked the blessing not only on the structure, but for the people who were instrumental in building it, who will work in it and those who will be patients in the \$1,100,000 institution.

invoked the blessing not only on the structure, but for the people who were instrumental in building it, who will work in it and those who will be patients in the \$1,100,000 institution.

invoked the blessing not only on the structure, but for the people who were instrumental in building it, who will work in it and those who will be patients in the \$1,100,000 institution.

St. Claire's Cornerstone Blessed

invoked the blessing not only on the structure, but for the people who were instrumental in building it, who will work in it and those who will be patients in the \$1,100,000 institution.

invoked the blessing not only on the structure, but for the people who were instrumental in building it, who will work in it and those who will be patients in the \$1,100,000 institution.

invoked the blessing not only on the structure, but for the people who were instrumental in building it, who will work in it and those who will be patients in the \$1,100,000 institution.

invoked the blessing not only on the structure, but for the people who were instrumental in building it, who will work in it and those who will be patients in the \$1,100,000 institution.

invoked the blessing not only on the structure, but for the people who were instrumental in building it, who will work in it and those who will be patients in the \$1,100,000 institution.

invoked the blessing not only on the structure, but for the people who were instrumental in building it, who will work in it and those who will be patients in the \$1,100,000 institution.

invoked the blessing not only on the structure, but for the people who were instrumental in building it, who will work in it and those who will be patients in the \$1,100,000 institution.

St. Claire's Cornerstone Blessed

invoked the blessing not only on the structure, but for the people who were instrumental in building it, who will work in it and those who will be patients in the \$1,100,000 institution.

invoked the blessing not only on the structure, but for the people who were instrumental in building it, who will work in it and those who will be patients in the \$1,100,000 institution.

invoked the blessing not only on the structure, but for the people who were instrumental in building it, who will work in it and those who will be patients in the \$1,100,000 institution.

invoked the blessing not only on the structure, but for the people who were instrumental in building it, who will work in it and those who will be patients in the \$1,100,000 institution.

invoked the blessing not only on the structure, but for the people who were instrumental in building it, who will work in it and those who will be patients in the \$1,100,000 institution.

invoked the blessing not only on the structure, but for the people who were instrumental in building it, who will work in it and those who will be patients in the \$1,100,000 institution.

invoked the blessing not only on the structure, but for the people who were instrumental in building it, who will work in it and those who will be patients in the \$1,100,000 institution.



# YOU'LL GET A BANG OUT OF THESE

# IGA FOOD VALUES!

Look below at IGA everyday low shelf prices and see what we mean by "Every Day Is Savings Day At IGA."

- COMET CLEANSER ..... Reg. Size **2 For 31¢**
- LIQUID IVORY DETERGENT ..... 22-oz. Plastic **63¢**
- SALVO PRE-MEASURED DETERGENT ..... Giant Size **78¢**
- LOW SUDS DASH DETERGENT ..... 1-lb., 8-oz. Size **37¢**
- PUFFS FACIAL TISSUES ..... 400 Ct. Box **2 For 53¢**
- DOLE PINEAPPLE JUICE ..... 46-oz. Can **31¢**
- STOKELY'S GREEN BEANS ..... No. 2 1/2 Can **29¢**
- SCHOOL DAYS EARLY PEAS ..... No. 303 Can **2 For 35¢**
- MOTHERS OATS ..... 2-lb., 10-oz. Box **45¢**

Why Pay More When There's An IGA Store Near You!

REFRESHING FROZEN IGA Lemonade  
**6 6-oz. Cans 69¢**



## Watermelon

The sweetest sign of summer's here! Red-ripe, luscious....

24-lb. Avg. **59¢**

FRESH GEORGIA CANTALOUPE **3 For \$1.00**

- Kraft MARSHMALLOWS ..... 1-lb. Pkg. **19¢**
- Royal Gold ICE CREAM ..... 1/2-gal. **59¢**
- Blue Ribbon WAX PAPER ..... 75-ft. Roll **10¢**
- IGA 8-Pak BUNS ..... Hamburger or Hot Dog **19¢**

## FRYING Chicken

(Limit 3 With \$3.00 Order)

Selected milk-fed fryers. Perfect for frying or barbecue. WHOLE, only....

Whole Lb. **23¢**



TableRite CANNED HAMS  
4-lb. **\$2.89**

Kraft Cheese Spread

Velveeta 2-lb. Loaf **69¢**

Royal Guest

Ice Tea... 8-oz. Pkg. **49¢**

Fresh GROUND BEEF ... lb. **39¢**

TableRite All Meat WIENERS ..... lb. **49¢**

Smoked HAMS ..... Butt Portion Lb. 1/2 **35¢**

TableRite Sliced BACON ..... lb. **49¢**

Pure Shortening Swiftning 3-lb. Can **49¢**

Folger's Instant Coffee .... 10-oz. Jar **89¢**

## Ole' Diz Charcoal BRIQUETS

10-lb. Bag **49¢**

## IGA TableFresh BREAD

1-lb. Loaf **10¢**  
Limit 2 Loaves With \$3.00 Order

FLORIDA ORANGES Doz. **59¢**

NEW APPLES 2 Lbs. **29¢**

VANITY FAIR PAPER TOWELS ..... 150 Size **2 For 33¢**

BLUE RIBBON TOILET TISSUE ..... 4-roll Pack **29¢**

BLUE RIBBON LUNCHEON NAPKINS ..... 200 Ct. **23¢**

SHOW BOAT PORK And BEANS ..... No. 300 Can **10¢**

HUNT'S PEACHES ..... No. 2 1/2 Can **29¢**

CHICKEN OF THE SEA TUNA ..... IGA Chunk 8 1/2 lb. **3 For 89¢**

OPEN KETTLE LARD ..... 50-lb. Can **\$4.79**

- IGA HAMBURGER SLICED DILL PICKLES ..... 16-oz. **19¢**
- IGA WHOLE SWEET PICKLES ..... Qt. **39¢**
- IGA PROCESS DILL PICKLES ..... Qt. **29¢**
- IGA SALAD MUSTARD ..... 18-oz. Jar **19¢**
- CEBHARDT HOT DOG SAUCE ..... 10-oz. Can **2 For 39¢**



8-6 Mon.-Thurs. 8-8 Fri.-Sat.

## FOODLINER



### Occupational License Notice

All city licenses for the sale of cigarettes, soft drinks, house trailers and for the operation of juke boxes and pin ball machines expire at midnight Sunday, June 30.

Licenses are now on sale at the office of the City Clerk.

MRS. MINNIE PRESTON  
Clerk, City of Morehead

### TAKE YOUR PICK!

Two Best Buys For Production Logging:

- McCulloch ONE/76 DIRECT DRIVE
- McCulloch ONE/86 GEAR DRIVE

These McCulloch Professionals are built to take abuse and deliver profits. Their lightweight, compact, high performance design makes your job easier, faster. You'll find you can cut more — make more!

ADDED POWER — INCREASED BORE & STROKE

See top trades and a demonstration see them today, all.

MONARCH SUPPLY STORE  
MAIN STREET MOREHEAD, KENTUCKY

### STUCKY FUNERAL HOME

PHONE ST 4-4106 OR ST 4-4107

Safety Belts Save Lives . . .

For your added protection we have installed safety belts in our ambulances

LICENSED LADY ATTENDANT

— Owned And Operated By —  
M. M. (Red) Stucky - Betty Stucky

### A Reminder To Kentucky Vacationers:

Take BLUE CROSS-BLUE SHIELD  
Wherever You Go Throughout America!

There Is No Substitute

SICKNESS AND ACCIDENTS DON'T TAKE VACATIONS . . .

Make sure that wherever you and your family spend your vacation this year . . . at home or "on the road" . . . you have Blue Cross-Blue Shield.

Always carry your Blue Cross-Blue Shield Identification Card!

THESE ARE TWO WAYS TO APPLY GROUP . . . Plans may be formed where there are 5 or more employees.

INDIVIDUAL AND FAMILY . . . If you are a Kentuckian, 64 or under, in good health, and neither husband nor wife works where there are 10 or more employees, you may apply direct. Mail the coupon.

MAIL THIS HANDY COUPON TODAY

BLUE CROSS-BLUE SHIELD  
3101 Bardwell Road  
Louisville 5, Kentucky

MO-12

Please send me information and an application for Blue Cross and Blue Shield.

NAME \_\_\_\_\_  
ADDRESS \_\_\_\_\_  
CITY \_\_\_\_\_ STATE \_\_\_\_\_

FARM BUREAU MEMBERS — SEE YOUR FARM BUREAU AGENT

### Cover Crop On Tobacco Bed Can Result In Early Plants

By Adrian M. Razor  
County Agent

Since even now through setting tobacco and plant beds are idle, this is a good time to be thinking about next year's tobacco bed. If you are going to use the same bed site, we would like to suggest that you plow up old bed and sow it in soy beans right now. Sow them heavy and turn them under or disk them in the fall. Folks who have used this practice, either by burning or and then either by burning or gassing their beds in the fall, they have had very good plants. The nice thing about doing this in the fall is that you don't have to wait for a period to catch the ground dry in the spring to prepare your beds.

As one farmer told me last week, if you could catch just one good clear day, all you had to do is just scratch the surface of the bed and sow the seed. He said that by sterilizing his beds in the fall, he gets his beds out in February now, whereas he very seldom got them out that early if he prepared them in the spring.

June 30 refunds the gas of the year, which means that farmers are entitled to every gallon of a gallon refund on every gallon of fuel used on the farm for the period of June 1, 1962, to June 30, 1963.

If you have filed before, the chances are you have already received the necessary materials to fill out and return. If you haven't filed before or haven't gotten your cards to return, stop by and pick one up.

Com

We have had a lot of calls complaining about crows taking up corn. When I had the first complaint, I asked for information from the Department of Interior and have just received a letter from Bobby Trammell who deals with this sort of trouble. This may be in time to help some people, especially those who are planning some silage corn.

The recommendation is: 50% wettable Endrin powder — 1% to weight of seeds; 75% wettable Arason 75 — 2% to weight of seed.

Blend the two powders by shaking in a closed container, add water to the mixture and apply to seed.

This is probably too late to help many people; however, you might try this and save it for next year.

Want To Try This?

I don't remember who gave this to me last week so I can't give him credit, but it might be worth trying.

If you are having trouble with starlings or other birds roosting on window ledges, etc., the suggestion is made to go to the ten store, buy a few toy snakes and stretch them out on the ledge or wherever the birds are roosting. This is supposed to scare the birds and eliminate the trouble. It is worth a try.

### Publisher's Pen—

(Continued From Page 4)

ever brought to our town for one grocery.

DEDICATED — The three out door recreational parks planned by Cumberland National Forest in Rowan County fill a real need. Two of them — Robinson and Triangle Tower — are open and Lochwey will follow. If you want a most interesting and informative, half-hour report Ranger Joe Mauck to tell you about the projects as Ned Breathitt was over the election results.

MOSTLY WHITE — Integration day news in the nation to do by all the U. S. A. there are probably fewer Negroes in this area than anywhere else. It would be on western deserts. Rowan County has about two Negro counties, Carter only three or four, and Elliott and Morgan, in solar as we know, none. We suffer from here, if any, colored folks in Menifee and some other area counties. This is a little unfair because such nearby counties as Greenup, Lawrence, Bath and Fleming have a reasonably high percentage of the colored race.

IN THE OPEN — It's no secret that the 35 or 40 Negro students at Morehead State College plan a demonstration at an Monday restaurant, or business place, that refuses them service. This was as Greenup, Lawrence and movement, but is certainly serious this fall. However, there is no reason if they will be taken away from any public place in Morehead.

AUTHORIZATION — Kentucky has more than 30 public works projects, most dams and reservoirs, in the President's budget. Only four were pulled out this year for House of Representatives voice vote authorization. Cave Run was one of these. This means that the U. S. Corps of Engineers have not passed by the end of the fiscal year on June 30. You may conjecture why the Cave Run authorization was only \$150,000. This is all the engineers said they could use, along with an overlapping \$70,000, during the next year to complete design and planning. Congressman Carl D. Perkins estimates Cave Run will cost between \$25 million and \$40 million, depending on the height, etc. in final specifications. Proponents of Cave Run liminary construction money in the appropriation, which means some work (providing jobs) can be done at the site near Farmers while plans are being completed. It takes five years, or more, to finish a project of this size after design is broken.

ON DOCTORS — Morehead lost a doctor during the week — I. M. Garred. Illinois had all but forced Dr. Garred to discontinue practice during the past several years, but he made a considerable contribution to our community during the 30's, 40's and early 50's. Morehead gained at least three M. D.'s over the week — two specialists at St. Claire Medical Center and a G. P. More about this later.

INSIDE INFO — It appears the state headquarters of A. B. Chandler may have a deficit exceeding \$100,000. Most people don't realize the extreme high cost of conducting a state-wide campaign. The IRS rule prohibiting income tax deductions of campaign contributions has multiplied the financing difficulties.

WHAT'S INSIDE? — During the past few months three attempts have been made, in the dead of night, to enter the vault of the County Court Clerk at Morehead. And, we have pictures of the one unsuccessful, but apparently well planned, effort to burn down the courthouse.

THEY'RE IN — Ed Kelly and Allice Young, both Democrats, have been elected to the State Senate and House, respectively, having no opposition in the November election. Kelly's term is four years and Young will serve two years. We conjecture that Fleming or Robertson will contend in 1965 that it is their time to "shoot" the State Representative, at most multi-county districts generally have an off-the-cuff alternating agreement.

PROBLEM — It is generally agreed among local officials that the number one problem of Morehead, which has growing pains, are the narrow streets and dead streets. This appears almost insolvable.

SINKING — Former editor of the Rowan County News, Mrs. Grace Ford, is critically ill. A "get-well" card would be welcome.

CORRECT — A Morehead News employee observed last yesterday "I'll bet we've run thousand columns about the hospital." He's correct. If all the news stories and pictures this newspaper has carried about this health facility were pasted end to end they would perhaps reach from Morehead to Licking River. When you are a patient when you need a doctor . . . you'll better realize why

### MSC Enrollment Up Nearly 100 From Summer Term High

The total has eclipsed an earlier mark of 1,500 and does not include any of the college's many workshops, the post-summer session or Breakthrough Training School.

A final summer enrollment of more than 2,000 is anticipated, a spokesman for the college said. Breakthrough has a summer enrollment of 415, an increase of 91 over the 1962 summer enrollment of 322.

Upcoming events on the MSC campus include:

- Art Education Workshop, July 7-19.
- Graduate Education Conference, July 11-18.
- Superintendents' Conference, July 11-18.
- Writers' Workshop, July 22-23.
- Communications Media Conference, July 25.
- KEA Leadership Work Conference, Aug. 4-7.
- Post-summer session, Aug. 7-23.
- Reading seminar, Aug. 7-21.
- Folk Dance Institute, Aug. 11-12.
- School Lunch Seminar, Aug. 12-16.

Illnesses

The national spelling bee was won by the contestant who spelled "biliousness." This was rather strange, as the word is virtually obsolete now, although much in use years ago when about all a doctor could tell from an examination was whether the examinee was well, bilious or dead.

### Whiskey, Wine—

(Continued from page one)

of assorted whiskey, gin and vodka.

Estill Lewis was arrested by the officers and was placed in the Bath County jail.

The "bridge" contraband was turned over to Bath County Judge Claude Shroat, while that taken in Rowan County was placed in storage at the State Police barracks.

The simultaneous raids were conducted, Lewis declared, to avoid any possibility of one operator tipping off others that raids were in progress. He said the three went off without a hitch and there was no resistance at any of the three locations.

Haynes and Waggoner were arrested before County Judge W. C. Flannery, Wednesday and bond was set at \$500 each. They are to appear in county court July 1.

We went all out on this one.

### DEPRESSED AREA —

The \$25,000 subscribed locally for a demonstration at an Monday restaurant, or business place, that refuses them service. This was as Greenup, Lawrence and movement, but is certainly serious this fall. However, there is no reason if they will be taken away from any public place in Morehead.

Everything For The Infant At The Lowest Prices In Town

### CRADLE SHOPPE

(Located in Bays-Turner TV & Radio Repair Shop)  
WEST MAIN STREET MOREHEAD

### McBrayer's SIZING SPECIALS!

Cool Summer Weave!

TRICOT MESH BRIEFS

REG. 29c **21c**

\* Shaped Nylon Tulle Hood  
Match your summer outfits, go anywhere in style. One size fits all. Many colors.

\* Women's Sizes 5, 6, 7  
Frosty white briefs with feather-edge elastic waist and leg openings.

### CANNON BEACH TOWEL

REG. 98c **74c**

\* 26x50-inch Size  
Super-tight terry cloth, wide multicolor stripes.

Ice-Blue Secret Roll-On DEODORANT

REG. 75c **67c**

\* Safe For Skin and Fabrics  
Guaranteed to check perspiration when others fail.

### McBrayer's, Inc.

Self-Service Variety Store  
Morehead — Olive Hill — Vanceburg  
Flemingsburg

### TOTAL PERFORMANCE:

IF YOU KNEW WHAT THIS "CAR KILLER" KNOWS... YOU'D BE DRIVING A SOLID, SILENT SUPER TORQUE FORD

This steel-edged pothole is probably the world's toughest test of a car's suspension. We drive into this car killer at 80 mph, locking our brakes as we go so the wheels can't roll through the hole as they normally would. The car slams against the far edge of the hole with such impact that it literally bounces out.

If you added up the cumulative effect of all the jars and jolts your car's suspension system experiences in years of normal driving, it wouldn't match the impact of one trip through the hole. Yet a Ford must run this test three times to prove its strength.

How can a Ford take it? Because Ford's front suspension has extra beef in spindles, springs, suspension arms — in fact, it's about 20 pounds heavier than the front suspension of our principal competitor's car.

We don't expect you to abuse your car the way we do our test cars. But whenever you drive, you'll welcome the extra strength of a total performance Ford. Ford strength is tested in a thousand ways in Ford's laboratories and proving grounds — and in open competition in the world's toughest rallies and stock car events.

Look at Ford's astounding record in open competition this year in the grueling Daytona, Riverside, and Atlanta 800's, World 600 at Charlotte, N.C., and in the demanding Pure Oil Performance Trials. Only a car with total performance — the best combination of strength, balance, precision control and road-clinging suspension — could roll up so many wins.

Before you buy any new car, test-drive the solid, silent Super Torque Ford. If you haven't driven one lately, you can't really know what a new Ford is like. Make this important discovery: it's built by Ford, it's built for performance... total performance.

solid, silent SUPER TORQUE

### FORD

FOR MORE YEARS THE SYMBOL OF RESPONSIBLE PROGRESS

STORZ MOTOR COMPANY

### ROWAN MOTOR SALES

Phone STate 4-4880 SALES AND SERVICE Morehead, Kentucky

# Society

## HAMILTON-TUSSEY REUNION IS JULY 7

The fifteenth annual Hamilton-Tussey reunion will be held Sunday, July 7, at Woodland Park, Roodburn. A basket dinner will be served at noon.

Officers of the group are: Alva Wedding, president; Claude Tussey, vice president; Pearl Brown, secretary-treasurer; Clyde Bruce, Arnold Hamilton, Cecil Fultz and Fred Fultz, directors.

## MRS. CLAYTON VISITS WITH NEW GRANDCHILD

Mrs. J. M. Clayton, College Boulevard, has returned from a two-week visit in Malone, N. Y., with her newest grandchild, Daniel Clayton Paro. The second child of Mr. and Mrs. Dan L. Paro, the baby was born May 25. He weighed seven pounds, seven ounces on arrival.

Mrs. Paro is the former Miss Lida Loo Clayton of Morehead.

## CHORAL SOCIETY WILL RESUME IN SEPTEMBER

Mrs. Victor Venetozzi, director, has announced the Morehead Choral Society has been dismissed for the summer months. Practices will be resumed in September.

**Kentucky Originals**  
Aircrafts - Handicrafts  
**Made In Morehead**  
Picture Frames — Gift Selections From Other Kentucky Crafts  
210 West Main Street

## ENTERTAIN FOR YOUNG VISITORS

Helen Hargis and Hugh Allen James, both of Lexington, recently spent a week visiting with their aunt and uncle, Mr. and Mrs. Jim Prince, at 1405 Wilson Avenue. During their stay, the Prince family entertained about fifty young people at a patio party and dancing.

Mr. and Mrs. Prince and children drove the visitors to Lexington on June 15 and went on to Louisville where their son, Jamie boarded a plane for Orlando, Fla. He will spend the summer there as a counselor at Camp Challenge, sponsored by the Crippled Children's Fund.

On Saturday, Mrs. Prince and daughter, Debra, and Laura left for a few days' visit in Washington, D. C. and New York City before going on to Lenox, Mass., where Debra will spend the summer at Folke Bait Club.

## BIRTHDAY PARTY HONORS MR. ARNOLD

A former Rowan Countian, Russell Arnold recently celebrated his seventy-first birthday with a party at the home of his son, Robert Arnold in Detroit. His daughter, Mrs. Olive Pilgrimage, and his daughter-in-law, Mrs. Pauline Arnold were hostesses for the event.

Guests were: Mr. and Mrs. Gilbert Arnold, Muncie, Ind.; Clella Arnold, Clearfield; Mrs. Ruby Lambert and son, Billie, Kingman, Ind.; Mr. and Mrs. Ted Stora, Sanvura, Mich.; Mrs. Carrie Kowalski, Toledo, O.; Jerry Pilgrimage and children, Richard, David and Lawrence, John W. and Patricia Arnold, Sharon, N.C.; Mr. and Mrs. Ed Kurp and family, Mr. and Mrs. Waylon Lambert and several friends, all of Detroit.

## ROBINSON CLASS WILL MEET TODAY

The Betty Robinson Class of the First Baptist Church of Morehead will meet this (Thursday) morning. Scheduled for 9:30, the meeting will be held at the church.

## FIRST SON BORN TO MR. AND MRS. LEACH

Mr. and Mrs. James A. Leach of Gallatin, O., formerly of Morehead are welcoming their first son, Michael James, born June 20. The baby weighed seven pounds, six ounces on arrival. He has a sister, Cathy Jane, two and a half years old.

Mrs. Leach is the former Wilma Mink, daughter of Mrs. Elma Mink of Morehead, who is visiting with the Leach family this week.

## SECOND CHILD BORN TO MR. AND MRS. SPARKS

Mr. and Mrs. James Sparks of Morehead are welcoming their second child, a son born June 14. The baby weighed six pounds, six and three-quarters ounces at birth and has been named James Matthew. He has a brother, Ricky Lee.

The baby's maternal grandparents are Mr. and Mrs. L. D. Skaggs, RFD 2, Morehead. The paternal grandparents are Mr. and Mrs. L. H. Morrison, Sun Street.

Mr. and Mrs. Earl C. Leach and sons, Earl Clark and Jim Andy, spent the week end in Gallatin, O. with his brother and family. Mr. and Mrs. James A. Leach and children, Cathy Jane and Michael James, and Mrs. Leach's brother, Garrard Sparkman and family.

## Powerful Engines

Undoubtedly Russia has enormously powerful satellite launching engines. It would have been quite a feat to launch a Russian woman of average weight into orbit, but she orbited a fat one.



## Ashtand Realtor Is Named Head Of FHA In State

Raymond G. Fleming, Ashtand real estate dealer, was named director of the Kentucky office of the Federal Housing Administration at Louisville Friday.

The federal agency insures mortgages on residences, inspects building construction and appraises existing buildings for mortgages.

Fleming was president of the Kentucky Real Estate Association in 1960.

## Army Course Completed By Bluestone Captain

Army Capt. Colbert L. Flanery, 24, of Bluestone, completed the 38-week regular course at the U. S. Army Command and General Staff College, Fort Leavenworth, Kan., June 14.

The course is designed to prepare select officers for duty as commanders and general staff officers at division, corps and field army levels. In addition to U. S. Army personnel, officers from other branches of the U. S. Armed Forces and allied nations attended the course.

The captain, son of Jaecie C. Flanery, is a 1944 graduate of Central High School, Muncie, Ind.

## Navy Basic Training Completed By Youth

Roger F. Dulin, 17, son of Mr. and Mrs. Cecil Dulin of Bondle 1, Morehead, recently completed basic training at the Naval Training Center, Great Lakes, Ill.

The nine-week recruit training included naval orientation and history, customs and etiquette, basic military law, ordnance and gunnery, seamanship and shipboard routine, sentry duty, military drill, physical fitness, swimming, survival and first aid.

## Dale R. Fair Is Wed In North Carolina



Mrs. Dale R. Fair

Her veil of illusion was attached to a crown of sear pearls, surrounded with flowers. She carried a white orchid on a white prayer book.

Miss Doris Riley of Bridgeport, Conn., the maid of honor, wore a blue cotton sheath with a silk organza overskirt and a headpiece of ruffled silk organza with matching flower and veil. She carried a nosegay of blue and white flowers.

Dressed similarly to the honor attendant and carrying white nosegays, the bridesmaids were Miss Joyce Ann Browning of Moscow, Tenn. and Miss Charlee Galloway, Potocasi, N. C. The flower girl was the bride's cousin, Norma Tripp of Mebane, N. C.

The bridegroom's father served as best man. Ushers were J. C. Barber and Charles Dudley Caudill, Morehead; Don Tripp and Ted Martin.

A reception was held following the ceremony. The bride, a graduate of Haw River High School, graduated in 1962 from East Carolina College, Greenville, N. C., with a BS degree. Mr. Fair graduated from Breckinridge Training School and from Morehead State College with the AB and MA degrees. He is now teaching physical education at Lake Wales, Fla.

After June 20 the couple will be at home in Babson Park, Fla., where their mailing address will be Box 201.

Relatives from Morehead attending the wedding were Mr. Fair's parents, his sister and family, Mr. and Mrs. W. R. Mahaney and children, and his nieces, Jane and Susan Allen.

## Reynolds-Dudley Team Takes Win At Sunnybrook

Mike Dudley and Mabel Reynolds, posting a 40, took Sunnybrook Golf Course's two-ball foursome tournament Saturday.

Four strokes back were Walter Carr and Becky Ross, while Sony Allen and Pucky Bradley finished third with a 45. Bill Bradley and Helen Patrick shot a 47 for fourth.

Only one ball was used for each team of two, with the man and woman alternating shots for nine holes.

## Ensign Clyde B. Green Completes Course

Navy Ensign Clyde B. Green, son of Mr. and Mrs. John T. Green of Morehead, was recently graduated from Naval Supply School, Athens, Ga., completing the 26-week Basic Qualification course conducted by the Navy Supply Corps.

The course covers the fundamental duties of supply officers. Graduates of the school are now qualified for Supply Corps duties both afloat and ashore.



PUBLICITY CHAIRMAN — Ann Huffman, daughter of Mr. and Mrs. Keith Huffman of Morehead, last week was elected publicity chairman of the Kentucky Methodist Youth Fellowship for a one-year term. A junior at Breckinridge Training School, she is president of the MYF of the Morehead Methodist Church and served last year as the Mayville District representative to the Conference Youth Council.

LIL ABNER'S LIL ABNER'S LIL ABNER'S LIL ABNER'S

NO SON WE DON'T SERVE CATFISH AT LIL ABNER'S

But we ARE proud of our delicious seafood, like the golden-brown butterfly shrimp and the GEM-INE Fillet of Sole that is the BEST ANYWHERE! — only \$1.00!

**LIL ABNER'S** 507 E. Main St., MOREHEAD, KY.  
Kentucky's Most Interesting Family Restaurant

LIL ABNER'S LIL ABNER'S LIL ABNER'S LIL ABNER'S

Complete Ambulance Service  
Oxygen Equipped  
"Equipped To Serve You"  
Member of Kentucky Funeral Director's Burial Association

— Authorized To Service —  
Burial Insurance Contracts Issued By COMMONWEALTH LIFE INSURANCE CO.

**LANE FUNERAL HOME**  
Phone ST 4-4983 — Morehead, Ky.

**TRAIL** CHAKRAES MOREHEAD, KY.  
Air Conditioned  
Tonight — Friday & Saturday  
★ A Fantastic Double Bill ★  
Kirk Douglas  
METRO GOLDWYN MAYER  
The Hook  
CAPTAIN SINDBAD

4 DAYS Starting Sunday 4 DAYS  
This Is The One You've Been Waiting For!

"It could be the most terrifying motion picture I have ever made!"  
—ALFRED HITCHCOCK

**ALFRED HITCHCOCK'S "The Birds"**  
TECHNICOLOR  
—ROD TAYLOR—JESSICA TANDY  
SUZANNE PLESSETTE and TIPPY HEDREN  
Directed by ALFRED HITCHCOCK — A Universal Release  
Based on Daphne du Maurier's classic suspense story.

NO ONE CAN SEE "THE BIRDS" UNTIL IT'S OVER!!!  
You can only see it from the beginning at: 12-50-3-00-5-10-7-25-8-40  
1:30-3:45-6:00-8:15 Sunday — 6:30-8:45 M-T-W

ENGAGEMENT ANNOUNCED—Mr. and Mrs. Charles Miller Herr of Alcoa, Tenn., announce the engagement of their daughter, Sara Kathryn, to Robert Wylie Lowe, son of Mrs. Pearl Brown Lowe of Morehead, and the late John W. Lowe. The bride-elect, a graduate of Alcoa High School where she was chosen Miss Alcoa High School in 1959, received the Alcoa Rotary Club Nursing Scholarship. She is a recent graduate of Vanderbilt University School of Nursing and is employed at Vanderbilt University Hospital. Mr. Lowe, a graduate of Morehead State College, was president of his senior class. He is now a senior student at Vanderbilt School of Medicine where he is treasurer of Phi Chi Medical fraternity. The wedding is planned for 24 at New Providence Presbyterian Church, Maryville, Tenn.

**AUTO PARTS**  
NEW AND USED  
— 700 CARS FROM WHICH TO CHOOSE —  
NEW ROCKER PANELS — BODY PLASTIC RECHROMED BUMPERS — NEW TAIL LIGHT LENSES — REBUILD GENERATORS, STARTERS AND BATTERIES.  
IF YOU NEED A PART, CALL US  
Why not trade with Earl Whisman?  
Most Everyone else does.  
RAY GOODPASTER, Parts Manager  
**WHISMAN AUTO SALES**  
Phone 392 J Mt. Sterling, Ky.  
"Located in Dozentown Hope, Ky."

## Marriage Licenses

(June 26-25)  
Clinton Hamm, D. Selfridge, Mich., and Margaret C. Glover, 19, Halesman, June 20.  
Gary Henry Wilby, 18, Birmingham, Mich., and Nancy Joe Brown, 18, Morehead, June 21.  
Larry Johnson, 29, Clearfield, and Barbara Jones, 27, Morehead, June 22.



Left to right: Alice Flood, Michigan; Lana Watkins, Texas; Sandy Young, Texas; Judy Laird, Nebraska.

— HEAR THEM —  
**5th Sunday Singing CLEARFIELD TABERNACLE**  
Sunday, June 30 — All Day  
Also Hope Singers, Hope, Ky., And Others  
— ALL SINGERS AND LISTENERS INVITED —  
CURT HUTCHINSON, Song Leader REV. RAMAH JOHNSON, Pastor

**The GOSPELTONES Trio**  
OF GULF COAST BIBLE COLLEGE, HOUSTON, TEX.

★  
SINGING FORTH  
THE GOSPEL  
MESSAGE OF  
OUR LORD  
AND SAVIOR

★  
— HEAR THEM —  
**5th Sunday Singing CLEARFIELD TABERNACLE**  
Sunday, June 30 — All Day  
Also Hope Singers, Hope, Ky., And Others  
— ALL SINGERS AND LISTENERS INVITED —  
CURT HUTCHINSON, Song Leader REV. RAMAH JOHNSON, Pastor

## THE CHURCH OF CHRIST

Meets at  
225 Second Street  
Morehead, Kentucky

Sunday School 10:00 A.M.  
Sunday Worship 11:00 A.M.  
Sunday Evening 4:30 P.M.  
Wednesday Evenings 7:00 P.M.

DON FLATT, Minister

Hear "The Voice of Truth" over WMOR each Wed.—7:15 a.m.

## CAMP COUPON

GOOD NEWS BIBLE CAMP  
Bluestone, Kentucky

Junior Camp — July 1-5 and 8-13

Ages 8 to 12

Teenage Camp — July 22-27

Ages 13 to 16

NAME \_\_\_\_\_

ADDRESS \_\_\_\_\_

Total Camp Fee \$8.00 — Mail \$2.00 With Coupon To:  
Mrs. Carl Clason — RFD 1 — Morehead, Ky.

## HERE'S HOW HIGH WE RATE

...for their faithful all-weather service to people in general and to our customers in particular.

Next stormy day — next time shores or children "gang up" on you — mail us your bank business. It will get top-level attention.

MAILING FORMS  
FREE ON REQUEST!

PEOPLES BANK  
OF MOREHEAD



## Telephone Service Extensions Scheduled For Two Sections

General Telephone Company will spend nearly \$70,000 during the next few months improving and extending telephone service in Rowan County and immediately adjacent areas.

That was the announcement this week by M. E. Keller, Morehead District manager.

Keller said almost \$50,000 will be expended in the Christy-Creek-Elliott-He-Poplar Grove section of southeastern Rowan County. Forty-two new customers will be served in this area and as a result of the project existing subscribers will receive more and better service, Keller said.

Extension of telephone service to the Ringos Mill-Masey Flat section of Fleming County, which lies immediately adjacent to Rowan County's northwest boundary, will cost about \$19,000, the dis-

trict manager said.

Fifteen new customers will be served, and lines will also be extended to Nuclear Engineering Service Corporation's nuclear waste disposal site on Massey Flat.

Approximately six and one-half miles of wire and cable will be required for completion of the Ringos Mill-Masey Flat project, Keller pointed out.

These projects are necessary to keep pace with the demand for modern telephone service in this area," he said. "Work on both jobs is expected to begin within 60 days."

General Telephone Company of Kentucky, a subsidiary of General Telephone and Electronics Corporation, has a total plant investment of nearly \$60,000,000 and serves some 150,000 telephones through 47 Kentucky exchanges.

## Nunn Asks Breathitt To 'Debate Issues'

Louis B. Nunn, Republican candidate for Governor, today challenged his Democratic opponent, Edward T. Breathitt, to a series of debates on campaign issues "anywhere, anytime, and as often as he likes."

Nunn also invited Breathitt's "speech writer and chief political advisor," Edward F. Pritchard, to "sit by my opponent's side and help him when the debates are in progress."

Pledging that his campaign would be "clean, but hard-fighting," Nunn made his remarks at the Convention Center before a gathering of more than 7,000 Republican workers throughout Kentucky.

Nunn promised to "clean up the rotten mess in Frankfort" and urge all "civic-minded citizens—regardless of political affiliations—to join with me in this crusade to restore respect and dignity to the operation of state government."

Nunn promised that if elected he would place the operation of Kentucky's government on a "sound, business-like basis, free from scandal and corruption."

He said Kentucky's government has been "plagued for too many years by incompetency and neglect of duty in high public office," adding that:

"We will and must place experienced, professional people in key posts in state government so that our merit system may have a chance to work in the best interests of the people of Kentucky. The system today is a mockery when such jobs are not protected and the Commissioner of Personnel spends more of his time campaigning for my opponent than he does in doing the work for which the taxpayers of Kentucky are paying him."

Nunn accused his opponent of "defrauding the members of the Democratic Party by trying to tell them that their party has become united."

"More than a quarter of a million Democrats voiced their opposition to the present administration in the recently concluded primary election," he stated.

"These good people cannot and will not forget the scurrilous, misleading my opponent resorted to and the vilification he heaped on recognized leaders in the Democratic Party. These same Democrats have long memories too and they will not be fooled by the attempt of Bob Combs and his handpicked candidate to seize control of their party."

Later in the day, addressing a Republican campaign fund-raising dinner at the Kentucky Hotel, Nunn accused his opponent of "possibly making many compromising and embarrassing deals in raising several million dollars to finance his gaudy primary campaign."

"My opponent has replied that most of his campaign money came from \$25 a plate hamburger dinners," Nunn said. "I believe the reaction of most people to this defense is that it's not only a whale of a lot of hamburger—but an awful lot of baloney."

The Republican standard-bearer charged that the Combs Administration and "my opponent" are engaged in a "mammoth white-wash campaign designed to comment of the wrongs and mismanagement of the present administration."

"My opponent is hoping that time and a fresh coat of lily-white words will make the people of Kentucky forget the sins of the present administration," he declared.

"Kentucky voters have long memories. They remember all too well the scandalous truck deal, the deplorable conditions in our prisons, the imposition of new and heavy taxes, the bloated state payroll, and the stark threat of bankruptcy in our state government."

Nunn's talk was interrupted frequently by applause and one lengthy demonstration by the Young Republican Clubs of Kentucky, which held their state convention in Louisville last week end.

Nunn promised that if elected he would place the operation of Kentucky's government on a "sound, business-like basis, free from scandal and corruption."

He said Kentucky's government has been "plagued for too many years by incompetency and neglect of duty in high public office," adding that:

"We will and must place experienced, professional people in key posts in state government so that our merit system may have a chance to work in the best interests of the people of Kentucky. The system today is a mockery when such jobs are not protected and the Commissioner of Personnel spends more of his time campaigning for my opponent than he does in doing the work for which the taxpayers of Kentucky are paying him."

Nunn accused his opponent of "defrauding the members of the Democratic Party by trying to tell them that their party has become united."

"More than a quarter of a million Democrats voiced their opposition to the present administration in the recently concluded primary election," he stated.

"These good people cannot and will not forget the scurrilous, misleading my opponent resorted to and the vilification he heaped on recognized leaders in the Democratic Party. These same Democrats have long memories too and they will not be fooled by the attempt of Bob Combs and his handpicked candidate to seize control of their party."

Later in the day, addressing a Republican campaign fund-raising dinner at the Kentucky Hotel, Nunn accused his opponent of "possibly making many compromising and embarrassing deals in raising several million dollars to finance his gaudy primary campaign."

"My opponent has replied that most of his campaign money came from \$25 a plate hamburger dinners," Nunn said. "I believe the reaction of most people to this defense is that it's not only a whale of a lot of hamburger—but an awful lot of baloney."

# Real Estate

★ HOMES ★ COMMERCIAL ★  
★ FARMS ★ AUCTIONS ★  
★ BUILDING LOTS

ATTENTION: All World War II Veterans Check Your Time Left For Loan Benefits!

— HOMES FOR SALE —



In Mabry Addition

New three bedroom frame home with modern built-in birch cabinets, built-in oven, range and kitchenette. Central heating system, copper plumbing. Large living room and hardwood floors throughout. This house is practically new and on a nice high lot. The carport may easily be converted into a family room or fourth bedroom. This one will qualify for a loan.



An Excellent Buy

Talk about a good buy! Four-room frame on three-acre plot of land. Has a good garden, good neighborhood and about 12 minute drive from Morehead. Most anyone can own this one. Priced at \$4,500.00.



Near Morehead

One of our best properties located near Morehead in a good neighborhood, with an eight-room two-story frame home, four bedrooms, combination living room, dining room, kitchen. Metal kitchen cabinets, utility room, full-sized basement, hardwood floors throughout with tile on kitchen floor, all storm doors and windows. Dry walled, and completely insulated. A three story job. A concrete block two-car garage outside. There is also a business building 30x40 used for a gift shop with business already built up. Just the place for the family to work and a good place to live for privacy, convenience and a good income. This property is located on a large 1 1/2-acre lot with one of the best landscaping jobs in this area. Will qualify for almost any kind of financing.



Two-Story Frame

Two-story frame located within the city limits. Basement; three large bedrooms and closets upstairs; large living room, bathroom, kitchen and dining room downstairs; three porches. Lot size 145x125 with an excellent garden. \$12,000.00.



Has Three Bedrooms

Three bedroom frame, with birch cabinets and hardwood floors. Has all utilities and plenty of elbow room. Located on a nice large, high-rolling lot, priced to sell. This is a good one, well located, presents a splendid appearance and should move at once. \$10,500.



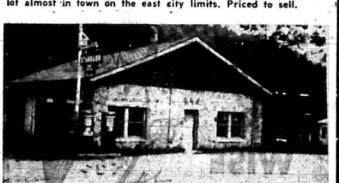
Near High School

Nice 5-room and bath brick home located on a well landscaped lot, 97x100, near the new Rowan County High School. Has 3 bedrooms, utility room and plenty of closet space. Kitchen has metal kitchen cabinets. All floors are hardwood and kitchen has tile floor. Storm doors and windows. May be seen by appointment. \$15,000.00.



In Thomas Addition

In Thomas Addition close to grade and high schools. Six rooms and bath frame dwelling with all utilities. On good lot 55x170 with a good view of Morehead. Half-basement and double garage. \$8,750.00.



Business Building

Business building located four miles east of Morehead on U.S. 60 on an acre lot. Suitable for a store, church, market or small business. \$6,000.00.

## — FARMS FOR SALE —

How about 100 acres of nice level unimproved land with no buildings? Altogether 112 acres — around 30 acres cleared up — some timber. Well drained. Price \$4,500.00.

99-Acre Farm

99-Acre farm just off a blacktop road. Has a good eight-room, one and one-half story frame home with bath, two porches and plenty of room. One tobacco barn 40x48 ft. Also one stock barn 40x26, garage, cellar, plenty of outbuildings and all covered with metal. Around 50 acres of very productive bottom land, with tobacco base of 1.25. Two ponds, a good livestock farm.

92 Tobacco Base  
One 175-acre farm with 62 acres tillable land, two dwellings, one barn, 92 tobacco allotment, good fencing, well watered, well fenced, 100 acres in timber, on good blacktop road, good livestock farm and about a 10 minute drive from town.

## America says, "That's for me!"



Going OLDS is the Going Thing!

Olds fever is taking America by storm... and here's one of the handiest reasons why: The captivating F-85 Outlast!

Sensational V-8 action and quicksilver agility both figure in this bucket-seat beauty's record-breaking popularity. So why not join the nearly 1,700 buyers a day who prove that going Olds is the going thing? You may lose your heart... but you'll discover one of '63's biggest thrills!

FREE 64-PAGE HAND MANUALLY ROAD TESTS—sent you at your Olds Dealer's while supply lasts!

## BLUB BLUB

Some days you need a PLUMBER fast. And now that's the quickest and easiest way to find one? You're right. THE YELLOW PAGES, where YOUR FINGERS DO THE WALKING



— THERE'S "SOMETHING EXTRA" ABOUT OWNING AN OLDSMOBILE! — SEE YOUR OLDSMOBILE QUALITY DEALER! —  
**CHEAP CHEVROLET CO.**  
ELEMINGSBURG KENTUCKY

**H. H. LACY REAL ESTATE**  
A Lifetime Of Experience In Financing And Real Estate Transactions  
GLADYS M. LACY, Salesman  
MOREHEAD, KENTUCKY

Named For 'Miss Anna'

'Carter Hall' Honors Woman Who Served MSC Presidents

By Roger Dixon
Few secretaries — if any — across the United States can say they have worked for every president of one college or university since its establishment...

She started working at Morehead State College, then called the Morehead State Normal School, in 1922 as secretary to President Frank C. Burton...

At that time, Miss Carter thought her career as a secretary was over. However, after a month's inactivity Dr. Doran asked her to serve as secretary to the Board of Regents and the Alumni Office...

Recently the Morehead State College Board of Regents voted unanimously to name one of the new college buildings in honor of Miss Carter for the outstanding contributions she has made to the college since 1923...

"I was so surprised, I almost fell over," she said. "I think it's wonderful and a great honor since I attended the old Morehead Normal School has been synonymous with me..."

Miss Carter graduated from the old Morehead Normal School in 1912, and then taught school at Christy School, Bratton Branch and Kothurn in Rowan County for three years. In 1915, she graduated from Portsmouth College of Business, now at Columbus school at Ohio State University, and returned to Morehead to work for the Clearfield lumber company...

Many memories are connected with her 40 years at Morehead State College. Miss Carter said that there were so many that she could not begin to tell them all. "However," she said, "I can say that Dr. Doran is certainly the most interesting president I ever worked for. He is a wonderful administrator, always on the alert, and he knows his own mind..."

Miss Carter, besides being one of the most unique secretaries in America holds the distinction of having one of the longest terms as a Notary Public in Kentucky. "I was commissioned a Notary Public in 1915," she stated, "and my commission has been continually renewed..."

Miss Carter says that she has made no plans for retirement at the present time. "Retirement is a thing of the future," she said, "because when I retire, I will have to leave behind me the most wonderful part of my life, over 40 years of memories and work at Morehead, and I have no desire to leave a place where I'm so happy..."

President Doran said, "The naming of Carter Hall for Miss Carter was done because of her invaluable services to Morehead State College through the years. I only wish we could do more to show her appreciation that is due her for her outstanding contributions to the college..."



GUIDED TOUR—Morehead State College President Adron Doran points to a sign on Carter Hall named in honor of Miss Anna B. Carter (at right) by the Board of Regents. Miss Carter has the distinction of having served as secretary to all of Morehead State College's seven presidents, including Dr. Doran.

I retire, I will have to leave behind me the most wonderful part of my life, over 40 years of memories and work at Morehead, and I have no desire to leave a place where I'm so happy. President Doran said, "The naming of Carter Hall for Miss Carter was done because of her invaluable services to Morehead State College through the years. I only wish we could do more to show her appreciation that is due her for her outstanding contributions to the college..."

Post Office—

(Continued from page one) should be addressed: John Jones, Clearfield, Ky. 40313

Trained postal clerks, with a glance at the ZIP Code number, can determine what national area, state and post office the letter is destined for. Post Office Department officials also expect that implementation of the ZIP Code system will result in fewer errors which result in mis-sent mail.

At the same time, Postmaster Lillian Parker of Farmers announced that community's ZIP Code number will be 40319. Mrs. Parker said an example of the proper use of the number would be: Mrs. Lillian Parker, Farmers, Kentucky 40319

Mrs. Lillian Parker of Farmers, Kentucky 40319

Morehead's—

(Continued from page one) effort of the people of this community. You show the same spirit and determination in other projects we still always reach our goal. Morehead State College President Adron Doran, Master of Ceremonies, said: "St. Claire Medical Center in a breakthrough in medical care for our community in the same manner as other breakthroughs have been made in so many other needed areas..."

Dr. Doran touched, as he has in most local speeches during the past two years, on the changes in centers of gravity and economy and how a community could be progressive today and regenerate within a decade because of the council and cooperation.

Hackney Speaks Paul A. Hackney, native of Frenchburg, and Director of the Division of Hospital and Medical Facilities, State Department of Health, said: "Major credit for this medical center should go to the progressive citizens of your progressive community. It is rare that we find so qualified, and determined a group, as is our Northeast Kentucky Hospital Foundation..."

Otis Wheeler, president of the Kentucky Hospital Association, said that Morehead was fortunate to have Sisters of Notre Dame operate the hospital. "We welcome you into the Sisterhood of Kentucky hospitals," he said. "This dedication marks the day when lives of your people will not be prematurely terminated..."

Dr. Wheeler said the Kentucky Medical Association conferred a special award on the 50th anniversary of a hospital. "Fifty years from now a representative of your community will step forward to receive this honor for the St. Claire hospital that you have erected and here dedicate today..."

It was revealed that the Committee that the Coordinating Commission of the Foundation had entered into contracts for two specialists: Dr. Warren H. Proutfoot, chief of surgery, will not be available until Aug. 1, due to prior contract.

Dr. Richard Hudnut, Internist, and Medical Director, will start his work at Morehead when the hospital receives its first patient Monday.

Offices For Specialists

The northeast wing of St. Claire Hospital was erected by the Foundation as offices and working space for the specialists. The Coordinating Committee hopes to add a pathologist and radiologist this year, and other specialists as the program develops and expands.

Dr. Proutfoot explained the referral system of the general practitioners in the specialists' contract. (This plan has been adopted only one other place — Hunterdon, N. J. — where it has been successful.)

Greetings from the Most Reverend Richard H. Ackerman, Bishop of Covington, were read by Monsignor Towler, Rector.

The Board of Directors of North East Kentucky Hospital Foundation among the visitors presented by the Master of Ceremonies were: Mother Mary Borromeo, Provincial Superior of the Sisters of Notre Dame; Sister Mary Rufine, Assistant Provincial; Sister Mary Edwin, Administrator of St. Claire Hospital; Bob Johnson, Director of State and Local Services, UK Medical Center; Seth E. Glem of Glem and Associates, general contractors for the hospital; J. P. Kerr, who was in charge of construction; Robert Isaacs, Architect, Sullivan, Isaacs and Sullivan; H. Riddle, Executive Director of the Kentucky Hospital Association, and Elizabeth Zimmerman and Margaret Preston, hospital and equipment consultant.

Morehead's Community Chorus provided two numbers for the dedication. Some of the expressions heard by a reporter for this newspaper, during the tour of the hospital, "I never dreamed it would be so nice. What a lovely room. You'd have to get well here. Am it's all air conditioned. The elevator opens on either side, and I understand they left space for another elevator. The colors are so bright it doesn't look like a hospital. I know of 29 married college girls who will have babies in this nursery before Christmas. I just can't wait to see the little babies in those nice basinetts. I hope I never have to come through this door, but if I had to have an operation, I'd like to have somebody think of this before I had my children. The wards (three bed) are nicer than private rooms in most hospitals. The Sisters seem so competent and dignified — you'll love Sister Mary Edwin. All in all, the size of the rooms, and bright colors throughout, attracted most favorable comment. Scores of Morehead business places, and citizens, sent flowers for the dedication.

"The Scotch have few illusions," says a sociologist. One outstanding illusion they have is that music can be played on the bagpipes.

Heart Attack—

(Continued from page one) Burial was in Lexington Cemetery, with rites at the graveside. Active pallbearers were Claude Brown, Curt Bruce, Norman Roberts, Robert Bishop, Marvin Maynard and Eldon Evans. C. Hazard and Otto Carr, Felix Wolfman, Hartley Battison, E. R. Thompson, Oscar Patrick, J. Rogers Caudill, Herbert Hogan, Walter Caudill, Clinton Johnson, Jimmy Williams, Earl Alderman, Harry Martindale, John Will Holbrook.

Funeral services were held at 1 p. m. in the First Methodist Church with Rev. Walter Garratt and Rev. Thomas Ditto officiating.

Some of the expressions heard by a reporter for this newspaper, during the tour of the hospital, "I never dreamed it would be so nice. What a lovely room. You'd have to get well here. Am it's all air conditioned. The elevator opens on either side, and I understand they left space for another elevator. The colors are so bright it doesn't look like a hospital. I know of 29 married college girls who will have babies in this nursery before Christmas. I just can't wait to see the little babies in those nice basinetts. I hope I never have to come through this door, but if I had to have an operation, I'd like to have somebody think of this before I had my children. The wards (three bed) are nicer than private rooms in most hospitals. The Sisters seem so competent and dignified — you'll love Sister Mary Edwin. All in all, the size of the rooms, and bright colors throughout, attracted most favorable comment. Scores of Morehead business places, and citizens, sent flowers for the dedication.

Some of the expressions heard by a reporter for this newspaper, during the tour of the hospital, "I never dreamed it would be so nice. What a lovely room. You'd have to get well here. Am it's all air conditioned. The elevator opens on either side, and I understand they left space for another elevator. The colors are so bright it doesn't look like a hospital. I know of 29 married college girls who will have babies in this nursery before Christmas. I just can't wait to see the little babies in those nice basinetts. I hope I never have to come through this door, but if I had to have an operation, I'd like to have somebody think of this before I had my children. The wards (three bed) are nicer than private rooms in most hospitals. The Sisters seem so competent and dignified — you'll love Sister Mary Edwin. All in all, the size of the rooms, and bright colors throughout, attracted most favorable comment. Scores of Morehead business places, and citizens, sent flowers for the dedication.

Second In—

(Continued from page one) Eastern Kentucky Educational Association secondary principals organization; Delmas Donia, principal of the Cannonburg Elementary School and chairman of the KEA elementary principals group; Dorcas Willis, classroom teacher from North Middleton and a member of the Governor's Commission on Education; Mary Jo McGary, principal of the Kennedy Elementary School in Jefferson County and past president of the KEA elementary principals group; and James Johnson, superintendent of the school system.

Reedus Back, director of the Morehead State College Breckinridge Training School, will serve as moderator.

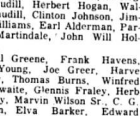
Howard, who has developed one of the nation's model high schools in his Chicago suburb, holds the AB and MA degrees from the University of Illinois and earned an advanced certificate in administration in 1955.

He formerly served as assistant principal at the University of Illinois High School and as director of the Nicaraguan-American Cultural Center in Managua, Nicaragua.

The remaining conferences in the series are: Graduate Education Conference, July 11; Superintendents' Conference, July 18 and Communications Media Conference, July 25.

Highley's Motel

Salt Lick, Ky. On U.S. 60 — 30 Miles West of Morehead Special Weekly Rates



ROCK BOTTOM PRICE YOUR V STORE

Pond's Dream Power 79c SIZE 54c DISCOUNT PRICE

noxzema Skin Cream 77c REG. 98c SIZE DISCOUNT PRICE

NEW Halo SHAMPOO \$1.00 SIZE 66c DISCOUNT PRICE

Superior Insulation Keeps Hot or Cold For Hours & Hours Light Weight Will Float \$266 LARGE SIZE ICÉ CHEST LOW - LOW PRICE

PIERCE'S Your Friendly 5¢ & 10¢ Store MOREHEAD KENTUCKY

Vocational School Contract Is Let

The State has awarded a \$379,700 contract to the Ralph E. Williams Co., Louisville, to construct a new Jefferson County area vocational school. Finance Commissioner David H. Pritchett said. The school is one of six of the State is building under a \$2,600,000 appropriation of the 1962 General Assembly. The others will be at Ashland, Hazard, Harlan, Somerset, and Madisonville.

Drive In Class ... In A First Place Winner Tremendous Discounts

During June and July Campaign 100 Cars and Trucks to choose from: Sport Coupes - Sport Sedans - 4 Drs. - 2 Drs. - Impalas - Belairs - Biscaynes - Chevy II and Corvairs 2 TON TRUCKS - 1 1/2 - 1 TON - 3/4 TON - 1/2 TON SOME CARS PRICED BELOW DEALER'S COST!

1963 Chevy II \$1695.00 1963 Impala Sport Coupe \$2223.95 1963 Biscayne Chevrolet \$1952.78

Over 100 Used Cars Must Be Sold. They Are Reconditioned - Guaranteed 30 Days... ON THE SPOT FINANCING - On NEW And USED CARS And TRUCKS!



1963 Chevy II \$1695.00 2 Door Sedan With Heater and Defroster



1963 Impala Sport Coupe \$2223.95 Heater and Defroster, Turn Signals, Oil Filter, Electric Windshield Wipers, Back Up Lamps



1963 Biscayne Chevrolet \$1952.78 Full Size Car With Heater, Defroster, Turn Signals, Oil Filter, Electric Windshield Wipers

WE WILL NOT BE UNDERSOLD... See Red Leet, Marvin Mitchell, Bill Martin, Riley Caudill or Sam Harris for the BEST Deal!

30-Minute Drive From Downtown Morehead



"We Are Never Satisfied Until You Are"

30-Minute Drive From Downtown Morehead

30-Minute Drive From Downtown Morehead

Advertisement for The Citizens Bank. Features an owl illustration and text: 'YOU ARE WISE', 'The Citizens Bank', 'GROW WITH US', 'OPEN A SAVINGS ACCOUNT TODAY', 'Check Accounts • Saving Accounts • Loans', 'Member Federal Deposit Insurance Corp.', 'USE OUR NIGHT DEPOSITORY'.



# Morehead News

Morehead, Kentucky, Thursday Morning, June 27, 1963

## Maxey Flat Dump Covers 3-4 Acres As Nuclear Waste Comes

The following article, detailing operations at the Maxey Flat nuclear decontamination facility, appeared in the *Flemingsburg Times Democrat* last week.

Residents of most areas are plagued with problems of garbage dumps, but the people of Fleming County are concerned with another kind of dump — nuclear.

A 300-acre farm some 18 miles east of Flemingsburg has been turned into a nuclear waste disposal dump in the past few months. The dump has caused a great controversy throughout the area. Farmers became panicky a year ago when the atomic waste dump was first announced. The dump is operated by Nuclear Engineering Co., Inc. with its head offices in New Jersey.

The Fleming County dump is one of four in the nation. Two are owned by the United States Government through the Atomic Energy Commission. The other, privately owned dump, operated by the Fleming County dump, is located in Nevada.

Byron E. Keene, radiation protection officer at the local site emphasized that the nuclear waste is carefully handled and buried to prevent the least possible contamination.

Keene said most of the materials received at the dump are of low yield. As for contamination, "there's little worry. But we handle it carefully anyway," he added.

The dump now covers only about three acres, four miles off, 32 on Maxey Flat. A high perimeter fence around the acreage will be raised as the need arises.

Currently, the waste is coming in, several trailer truck loads at a time. It comes from various laboratories and the Navy and Air Forces in the East and along the seaboard.

"We had to do it that way so the state could maintain, control and guarantee that once all of the land here is used up and the dump is closed, it will remain closed," Keene added.

"We don't intend for anything to happen to contaminate anything or anybody," Keene said. "In fact, once it is closed, it will be possible for farmers to grow crops right over the nuclear waste without contamination. Of course, not all areas can be cropped because of higher danger levels of some portions of the dump which could be used for agriculture."

Besides the laboratory and a shed at the dump site, the firm maintains an office at Morehead.

Some liquid waste brought to the dump is stored in huge tanks and later disposed of in bulk and containers. Keene said "Most of the contaminated material is encased in lead and concrete containers." The containers are buried in trenches 20 to 25 feet deep and 100 yards long by 10 yards wide. All dirt is continuously used to

## 'Pie Supper' Planned Saturday By OES Group

What has been termed "an old-fashioned pie supper" will be held Saturday, beginning at 7:30 p.m. by Morehead Eastern Star Chapter 227.

## Candidates For Burley Queen Sought

Attractive and talented Kentucky girls are being invited to be candidates for the state's 1963 Tobacco Princess.

The State Department of Agriculture and Kentucky loaned to tobacco warehouse operators are sponsoring the second annual Kentucky Tobacco Princess Pageant to be held as part of the opening day activities at the Kentucky State Fair Sept. 6.

## MSC Names James Still To Faculty

James Still, nationally acclaimed poet, novelist, and short story writer, has been named to the Morehead State College English faculty as a permanent writer in residence.

Still spent the spring semester of 1961 as a writer in residence at the Hindman Settlement School since 1932 with a four-year absence while serving in the Air Force. He lived in a 150-year-old two-room log house near Hindman.

Still has written three widely acclaimed books and numerous short stories and poems which have been published in America's leading magazines.

His novel, *River of Earth*, received the Southern Author's Award as the best novel of the year in 1941 and his books *Hounds on the Mountain*, a collection of poems, and *On Troublesome Cree*, a collection of short stories, are classics.

## STARTING TODAY! HOOK INTO A REAL BUY!

## FORD DEALER SUMMER SIZZLERS



EVERY CAR IN STOCK...READY TO GO FOR YOUR SUMMER VACATION! WE AIM TO KEEP OUR SALES SIZZLING ALL SUMMER! COME IN TODAY...YOU MAY SAVE ENOUGH TO PAY FOR YOUR VACATION!

GET A RED-HOT DEAL ON THIS SUMMER SIZZLER

GET A RED-HOT DEAL ON THIS SUMMER SIZZLER

GET A RED-HOT DEAL ON THIS SUMMER SIZZLER

THE HOTTEST DEALS OF THE YEAR ARE HERE ON USED CARS TOO! SEE YOUR F.O.A.P. FORD DEALER

## ROWAN MOTOR SALES

117 WEST MAIN ST. MOREHEAD, KY.

## SUNNYBROOK GOLF COURSE

Phone: STate 4-0299 — 3 Miles East of Morehead On U.S. 40

## July 4th Tournament For All

Callaway Handicapping Used — Makes The Beginner As Good As The Best Golfer Playing SPEND YOUR HOLIDAY AT YOUR GOLF COURSE

Rates: \$1.00 and \$1.50 M.S.C. Students \$1.00  
Holidays: \$1.50 and \$2.50 Holidays \$1.50

## Beauty Pageant Feature Of July Co-Op Meeting

C. J. Ross, manager of Fleming-Mason Rural Electric Cooperative Corporation, has announced that a beauty contest will again be a special feature of the annual meeting of Co-op members, July 16.

The winner and runner-up will receive valuable prizes and will represent Fleming-Mason RECC at the state contest to be held at the State Fair in September. There they will vie for the title of Miss Kentucky RECC and a chance to enter the national beauty contest to be held in Dallas, Tex.

## Missile Display Scheduled Here By US Air Force

An X-7 Ramjet missile, of the type which set many records in early tests, will be on display on Main Street here today (Thursday).

TSGT Eugene Berry, local Air Force recruiter, said the \$300,000 piece of space-age hardware has set records as the fastest Ramjet missile, the fastest ground-controller missile and the fastest recoverable missile.

The X-7 was developed by Lockheed. It is a high-flying rocket which radios performance data back to ground technicians and after a test parachute back to earth, standing upright by sticking its nose nose into the ground for easy recovery.

take the WORRY out of moving!

call BLAIR TRANSFER AND STORAGE PHONE STATE 4-5903 Complete Local and Long Distance Moving Service... Packing... Storage... Crating

AGENCY FOR GREYHOUND VAN LINES

613 W. Main Morehead, Ky.

## WHY PAY RENT?

BUY A NEW HOME TODAY...

You can't realize how nice and how much room there is in a Mobile Home until you visit CHEAPS Big Display Lot in Flemingsburg.

Completely furnished from towels in the bath room to a deep freeze in the kitchen... Priced from \$2,795 to \$10,500.

Each of our coaches is individually displayed, decorated and landscaped so you can see exactly how it will look on your lot.

Direct factory dealers for — LIBERTY COACHES, PRINCESS COACHES, PEERLESS (Gold Seal), ACTIVE, GENERAL HOMES, COLONIAL AND MAGNOLIA.

## Cheaps MOBILE HOMES

FLEMINGSBURG, KENTUCKY Opposite Cheap Chevrolet

Only \$1590 down and payments of \$159.50 per month

FREE Condo Status with any mobile home sold during June, July and August. (Retail Value \$279.)

Open 6 Days A Week And After Church On Sunday

## HEY KIDS! HOP ABOARD!

## THE SEALTEST BANDWAGON

is loaded with Sealtest-wholesome frozen treats

SEALTEST CHOCO-CHERRY BARS New Sealtest taste Treat! Cherry rich inside. With a crunchy Choco-Chip coating. What a cool combination. At most Sealtest Dealers.

SEALTEST TOFFEE KRUNCH BARS Creamy, crunchy taste sensation! Delicious Sealtest Toffee Ice Cream with chocolate, toffee-sprinkled coating. At most Sealtest Dealers.

SEALTEST FUDGICLES Rich, chocolatey fudge ice cream. For kids everywhere love them. And Sealtest makes them. Sealtest good for pure enjoyment! At most Sealtest Dealers.

SEALTEST ICE CREAM SANDWICHES Smooth, creamy Sealtest Vanilla Ice Cream between flavor-rich chocolate wafers. Two ways delicious! At most Sealtest Dealers.

KIDS! THESE SEALTEST TREATS ARE C-O-O-LING GOOD!

MR COOL

## Sealtest ICE CREAM

SEALTEST MALT CUPS Sealtest! Chocolate-Malt Flavored Ice-Milk-a-Cup. Thick and creamy good — deliciously satisfying. At most Sealtest Dealers.

# Public Is Agreeably Surprised At St. Claire Hospital Facilities



View From Speaker's Platform

**IN FOREFRONT**—Occupying front row seats at Sunday's St. Claire Medical Center dedication were members of the Sisters of Notre Dame, who will operate the hospital. Clad in black robes were visiting sisters from the Covington Diocese.

While white-robed members are those who will form the permanent operating staff of the institution. Eight sisters will make up the nucleus of the hospital's operating force.



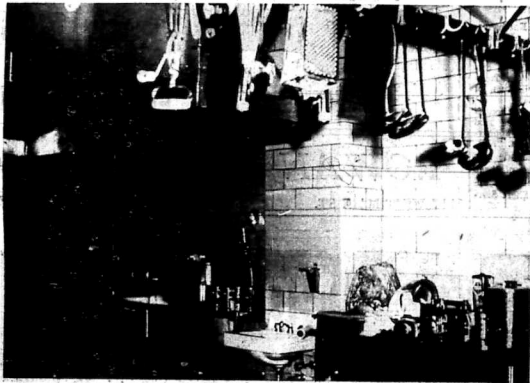
She Sparked The Drive

**DRIVING FORCE**—Dr. C. Louise Caudill, Morehead physician, who is credited with providing the motivation which brought about construction of St. Claire Medical Center, spoke briefly at Sunday's dedication ceremony. Behind Dr. Caudill are Dr. Adren Doran, president of Morehead State College, who was master of ceremonies for the 45-minute program, and Dr. William D. Willard, head of the University of Kentucky Medical Center, who was the principal speaker.



View From the Outside

**OPERATING ROOM**—St. Claire's operating room, containing the latest in up-to-date equipment, drew considerable attention at Sunday's open house. Here a group of visitors inspect the room, one of many points of interest speculators found in the hospital. At left is Mrs. Parnell Martindale.



This Is St. Claire's Kitchen

**FOOD PREPARATION CENTER** — This is the kitchen at St. Claire Medical Center. Using only the most modern equipment available, the staff will prepare food for both patients, staff and

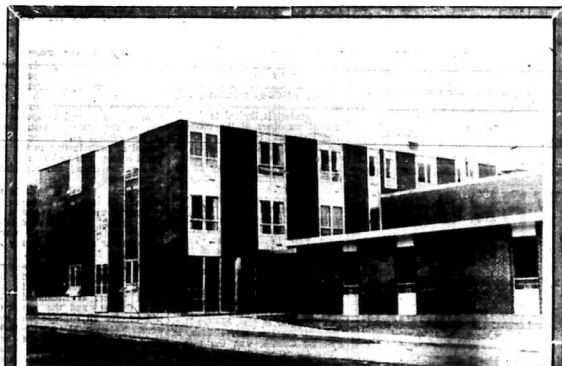
visitors in this area. St. Claire is widely regarded as probably the most advanced small city hospital in this section of the United States.



They're Taking A Break

**DINING ROOM** — Resting after their walk-through of St. Claire Medical Center are, l-r, Mrs. Joe Mauk, Mr. Mauk and Mrs. Alise Manning.

About 10 tables, each seating four persons, are included in the room, which is designed for use of both the center's staff and visitors.



Crowds Pleased With St. Claire

Practically every person who toured St. Claire Medical Center Sunday was pleasantly surprised by the completeness, attractiveness and the modernity of the institution. The \$1,100,000 hospital and medical center is to receive its first patient Monday.

A large crowd braved a beaming sun to witness the dedication ceremonies, and then moved inside to air-conditioned comfort for inspection of the building.



'It's Done In Pink and Blue'

**THE NURSERY**—St. Claire's nursery got a lot of attention from Sunday crowds. Done in pink and blue, it has 12 bassinets. The only person

recognizable in this photo is Mrs. J. B. Calvert Jr., r.



They Looked Grounds Over, Too

**INSPECT SURROUNDINGS**—Not only did the St. Claire Medical Center building get a thorough inspection, Sunday, the large crowd also fanned out to get a first-hand view of the grounds.

This photo shows a small part of the group which gathered prior to the start of the dedication ceremonies.

—Photos by Martin Huffman

# Prayers Mark Dedication Sunday Of Morehead's Medical Center

Prayers for the future, and praise for the cooperation and sacrifices that have been made for the past three years to erect a hospital in Morehead, were heard Sunday at the formal dedication. The following articles were assembled by a Morehead News reporter —

## "A Monument To Many People"

Most Reverend Richard H. Sherman, S. J., Bishop of Covington, expressed these greetings for the dedication of St. Claire.

This is indeed an historic day for the City of Morehead, its citizens and its leaders. Your dream of many years is finally realized in the official dedication of the Saint Claire Hospital.

The hospital is a monument to the zealous efforts and the generous sacrifices of many people. As such it shall stand as their monument. In the future as in the present, not only the sick who shall be served within its walls but the men and women of the Morehead community, shall thank God for those who made it possible. Most earnestly do I join in this prayer and ask God to bless this work of mercy and all its benefactors.

To succeed, the Saint Claire Hospital shall need your continued, consistent support. The good Sisters of Notre Dame who administer it, shall require your understanding cooperation. No less than man itself, an institution of this kind cannot live or survive alone. It is my earnest hope and prayerful wish that you will give this Hospital a first place in your hearts. Thus only, shall it prosper and contribute to the commonweal of your City.

For you as for all the people of the Morehead area, I ask the special blessing of God, and beg from Him the peace for which all men seek and only He can give.

## Cornerstone Laying Ceremony Impressive

The Right Reverend Charles A. Towell, P. A., Diocesan Director of Hospitals, Covington, included Psalm 3 in the ceremonies at the laying of the cornerstone of St. Claire Hospital.

placed at the southeast corner of the hospital. Monsignor's prayer and words at the cornerstone laying—

How delightful are thy tabernacles, is Lord of hosts! My soul pineth and fainteth for the courts of the Lord.

My soul and my body exult in the living God; Even as the sparrow that hath found himself a home, and the turtle dove a nest where she may lay her young.

So are these altars, O Lord of Hosts! My King and my God! Happy are they who dwell in thy house: O Lord; they praise thee eternally.

Happy the man whose strength is from thee; he longeth for the highways through the valley of tears, to thy place of pilgrimage.

For the Lawgiver will give a blessing, and they shall gain in strength, until on Zion they behold the God of gods.

Lord, God of hosts, hear thou our prayer, give ear, O God of Jacob!

Thou our Protector look upon Annot, and behold the face of this Annot.

For better is one day in thy courts than thousands elsewhere. I choose to be lowest in the house of my God, rather than ahead in the tents of evil-doers.

For God loveth mercy and truth; the Lord will give grace and glory.

To the upright he denieth no good thing, O Lord of hosts, happy is the man who trusteth in thee.

Glory be to the Father.

## Prayer

O Lord God, whom the heavens and the earth cannot contain, but can constantly be invoked; we beseech thee, through the merits and intercession of blessed Mary ever Virgin, of blessed Saint Claire, and of all thy saints, visit this place with thy goodness and love, and by the infusion of thy grace, purify it of all uncleanness, and keep it undefiled. And thou didst fulfill the vow of David, thy didst fulfill the vow of Solomon, in the work of Solomon, his son, design in this work to

fulfill our desires, and banish hence all wicked spirits.

Monsignor Towell then blessed the cornerstone saying — Our help is in the name of the Lord.

Who made heaven and earth. May the name of the Lord be blessed. Henceforth and forever.

The stone which the builders rejected. The same is become the cornerstone of St. Claire Hospital.

Thou art Peter. And upon this rock I will build St. Claire Hospital.

Glory be to the Father, and to the Son, and to the Holy Spirit. As it was in the beginning, is now, and ever shall be, world without end.

## Prayer

Lord Jesus Christ, Son of the living God, thou Who art true God and omnipotent, the splendor and image of the eternal Father, and everlasting life; thou Who art the cornerstone hewn from the mountain not by the hand of man; thou Who art a foundation which can not be moved — do thou make firm this stone which is laid in thy name. And thou, the Beginning and the End, in Whom from the first instant God the Father created all things, be likewise, we pray, the beginning, and the increase, and the consummation of this hospital which is begun for thy fame and thy glory. Who with the Father and the Holy Spirit, livest and reignest, God, forever more.

Bless, O Lord, this creature of stone, and grant by our prayer that all who seek St. Claire Medical Center may enjoy health, in body and healing in soul. Through Christ our Lord.

"Help Us Dedicate Ourselves Anew"

Rev. John Conley, Pastor of the First Church of God, Morehead, used these words in offering the invocation Sunday at the dedication of St. Claire Medical Center.

Almighty, Father, whose eyes are ever open toward the right, and whose ears are ever open unto thy cry; May this hospital be given to thy service, and that in it skill and tenderness may unite to bring

health and cure those who come for aid.

Additional special services for Kentuckians, especially needy children, are being delayed by personnel shortages.

Harold C. Bennett, director of recruitment and examination in the State Department of Personnel, has reported. He explained that over 300 positions for social workers, trainees are now vacant throughout Kentucky.

The vacancies are new positions made possible by additional Federal funds appropriated by Congress last year. The appropriation provides Federal funds to relieve, and those who come in sorrow may find joy and gladness.

Give wisdom and gentleness to ministering servants, and may the lamp of hope shine in the darkest hour of distress and fear in the hospital.

Now, O loving Father, we bow our hearts before Thee, praying Thou would grant to us that we may be strengthened by the riches of thy glory in the inner man; and that Christ may dwell in our hearts by faith.

## "Grant Courage And Understanding"

The program dedicating St. Claire Medical Center, which will be held Sunday at the dedication by Rev. W. L. Hogg, pastor, Christian Church, Morehead.

"Almighty Father, whose power of administration, grant courage and understanding. Sustain with thy patience all who serve with hand or brain, and give them a true vision of the great enterprise which means their joyful health in all their lives."

Sanctify, we pray thee, those whom thou hast called to study and practice the arts of healing, and the prevention of disease and pain. Strengthen them with thy living Spirit, that they may administer the health of the community may be promoted and thy Kingdom advanced on earth.

Grant, we beseech Thee, O merciful God, so that who minister healing and suffering thy practice in the way of duty, strength and patience, tenderness and love for men, and that they may fully serve Thee in their office for the love of Thee, through Jesus Christ our Lord.

# Personnel Shortages Slow Plan

Additional special services for Kentuckians, especially needy children, are being delayed by personnel shortages.

Harold C. Bennett, director of recruitment and examination in the State Department of Personnel, has reported. He explained that over 300 positions for social workers, trainees are now vacant throughout Kentucky.

The vacancies are new positions made possible by additional Federal funds appropriated by Congress last year. The appropriation provides Federal funds to relieve, and those who come in sorrow may find joy and gladness.

Give wisdom and gentleness to ministering servants, and may the lamp of hope shine in the darkest hour of distress and fear in the hospital.

Now, O loving Father, we bow our hearts before Thee, praying Thou would grant to us that we may be strengthened by the riches of thy glory in the inner man; and that Christ may dwell in our hearts by faith.

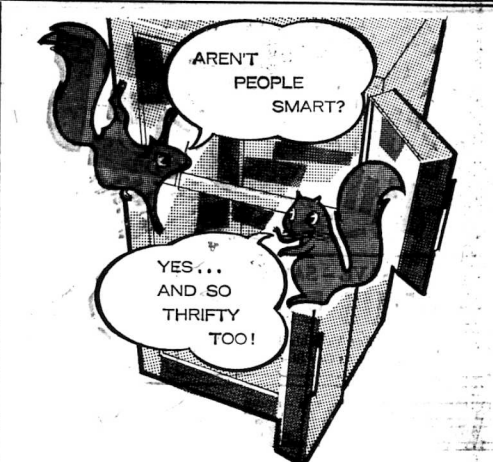
"Grant Courage And Understanding"

The program dedicating St. Claire Medical Center, which will be held Sunday at the dedication by Rev. W. L. Hogg, pastor, Christian Church, Morehead.

"Almighty Father, whose power of administration, grant courage and understanding. Sustain with thy patience all who serve with hand or brain, and give them a true vision of the great enterprise which means their joyful health in all their lives."

Sanctify, we pray thee, those whom thou hast called to study and practice the arts of healing, and the prevention of disease and pain. Strengthen them with thy living Spirit, that they may administer the health of the community may be promoted and thy Kingdom advanced on earth.

Grant, we beseech Thee, O merciful God, so that who minister healing and suffering thy practice in the way of duty, strength and patience, tenderness and love for men, and that they may fully serve Thee in their office for the love of Thee, through Jesus Christ our Lord.



### you'll enjoy the conveniences of a modern electric refrigerator-freezer

It'll be less work, for example. The larger capacities of modern electric refrigerator-freezers eliminate those back-and-forth runs to market. With greater quantities and varieties of fresh and frozen foods on hand, meal planning is easier, more flexible. And you can forget about defrosting — it's a thing of the past.

You'll find too, you'll cut food expenses by packing away in-season savings for out-of-season serving. Consider all the benefits of these space-saving 2-in-1 units — and stop at your dealer's today.

**RE-WIRE NOW AND SAVE!**  
We will pay you \$35, if you change from 2-wire to 3-wire, 100 ampere service and install any one of the following appliances:

- 240 Volt Dryer
- Air Conditioner
- Water Heater
- 120 Volt Refrigerator-Freezer

Offer good until August 31, 1953. See our local manager before re-wiring.

**KU**  
SYMBOL KENTUCKY UTILITIES COMPANY OF SERVICE  
an investor-owned electric company

**NEXT TO A BED**

THE MOST COMFORTING THING IN A BEDROOM IS AN EXTENSION PHONE

Why stir from bed when the phone rings? With a lovely little STARLITE® extension phone by your bedside, all you need do is reach to make or take a call. Besides, the STARLITE phone has a dial that glows in the dark for easy dialing, and comes in colors to match your room decor. Visit or phone our Business Office for details.

**GENERAL TELEPHONE**

### Morehead Leaders Are Recognized

Members of the Board of Directors of Northeast Kentucky Hospital Foundation, Inc., were recognized Sunday at the dedication of St. Claire Medical Center, by the men and women who led the fight — who somehow found a way when the planning, programming and financing seemed almost hopeless.

The 15-member Board is composed of: C. P. Caudill, president; C. Louise Caudill, vice-president; W. E. Crutcher, secretary; Elijah M. Hogg, treasurer; Adron Doran, D. B. Caudill, Mrs. J. A. Williams, Mrs. W. L. Jayne, Glenn W. Lane, C. Z. Bruce, Eldon T. Evans, J. M. Clayton, Johnny Rogers, E. D. Blair and Adrian Ratz.

Also praised were three former members of the Board, Prof. Wm. Caudill, Otto P. Carr and the late John M. Palmer.

Under the foundation constitution and by-laws the Board members serve three year terms, with the terms of five expiring each July.

These five are elected at the annual stockholders meeting which is scheduled this year of July 13, at 4 p.m., in the Rowan County Health Center. Any person who contributed to the hospital is considered a stockholder and eligible to attend the annual meeting. All officers are also elected at this time.

The powerful Coordinating Committee which administers the Professional Fund and Medical Center is composed of: Dr. Caudill, Dr. Doran, Crutcher, Hogg and Clayton.

### Expressions From Many Leaders

Northeast Kentucky Hospital Foundation and Sisters of Notre Dame received many congratulatory messages at the dedication of St. Claire Hospital in Morehead Sunday. Among these were:

Gov. Bert Combs — "I share the pride of the good people of Rowan County in the accomplishment of the aim to have a fine medical facility to serve the community."

Sen. John Sherman Cooper — "St. Claire Hospital will stand for generations as a monument to the unselfish devotion, faith and sacrifice of your people."

Sen. Truston B. Morton — "Those of you who worked so hard to have this new facility built in your community are to be sincerely congratulated."

Congressman Carl D. Perkins — "After most of us have passed on, the modern hospital that you dedicate today will provide health care so that your people will not prematurely die. You are to be congratulated... Your community

### When power counts... STANDARD STANDS OUT

In highway driving, safety so often depends on your car's swift response... your ability to pass quickly. With a Standard gasoline in your tank, you know the power's there when you need it. You can keep your mind on the road, not on your car's performance! This kind of confidence has made Standard the South's favorite family of gasolines for three generations. Crown, Excel, Crown, Economy Crown — all three offer long-running mileage, dependable performance, top power at the price. So stop at Standard — for famous-quality gasolines and for wide-awake service to keep your car running better longer.

**STANDARD OIL COMPANY (KENTUCKY)**

**STANDARD OIL**

**E. C. DeHART, Agent**

**Morehead, Ky.**

# JULY 4th CELEBRATION

**SAVE - SAVE  
BONUS BUCKS**

Good For Valuable Free Prizes At Our Store!

## SAVEWAY SUPER MARKET

Anyone wishing to cash Bonus Bucks For the Northeast Kentucky Hospital Foundation Fund can do so by returning them to us. We will send the check to the Hospital Fund in your name.

RAY'S SAVEWAY

**WHOLE FRYERS**  **29¢**  
Lb. **29¢**  
CUT UP ..... Lb. **33¢**

**WATERMELONS**  **59¢**  
Ea. **59¢**

 **MAXWELL HOUSE COFFEE** 1-lb. Can **49¢**  
Limit Of 1 Lb. With \$5.00 Order Or More

 **ROBIN HOOD FLOUR** 25-lb. Bag **\$1.79**

**VAN CAMP'S PORK & BEANS** 1-lb. Can **10¢**

 **6 - 12-oz. Bottles PEPSI-COLA** **29¢**  
Plus Deposit

**THRIFTWAY POTATO CHIPS** 1-lb. Pkg. **49¢**

**Sirloin Steaks** ... Lb. **89¢**

**GOODY-GOODY SWEET PICKLES** Qt. Jar **39¢**

**Cube Steaks** ..... Lb. **99¢**

**SMALL EGGS** Doz. **29¢**  
FRIDAY AND SATURDAY ONLY

**T-Bone Steaks** .. Lb. **\$1.09**

THIS WEEK WE ARE OFFERING  
**4 STAINLESS STEEL FORKS** FOR **49 BONUS BUCKS Or 49¢**  
With Coupon And \$5.00 Order Or More  
This Valuable Coupon Good For 50 Bonus Bucks On 4 Stainless Forks Good Until July 3, 1963.

**CHICKEN**  
BREASTS ..... Lb. 59¢  
THIGHS & LEGS ..... Lb. 49¢  
WINGS ..... Lb. 27¢  
BACKS ..... Lb. 15¢

**Jenny Ann BOLOGNA** Lb. **25¢**

New, Red **POTATOES** 10-lb. Bag **39¢**  
Jumbo **CANTALOUPE** 3 For **89¢**  
138 Size California **ORANGES** Doz. **39¢**

Reg. Size **CAMAY** 3 For **32¢**

Medium Size **IVORY** 2 For **21¢**

Reg. Size **TIDE** **29¢**

King Size **OXYDOL** **\$1.31**

25-lb. Box **DASH** **\$4.09**

12-oz. Liquid **JOY** **37¢**

Giant Size **SPIC & SPAN** **81¢**

Giant Size **COMET** 2 For **41¢**