

MOREHEAD STATE UNIVERSITY

Spring 2004

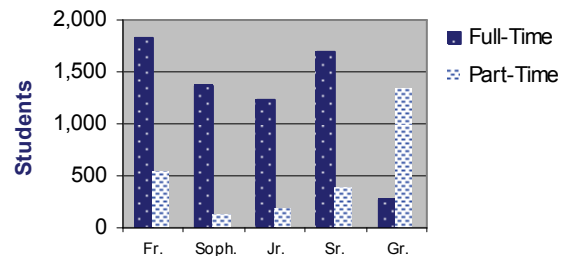


...In a Nutshell...

Spring 2004 Enrollment By Traditional Classification

Classification	Full-Time	Part-Time	Total
Freshman	1,825	548	2,373
Sophomore	1,366	124	1,490
Junior	1,238	180	1,418
Senior	1,697	384	2,081
Graduate	264	1,328	1,592
TOTAL	6,390	2,564	8,954

Full-Time & Part-Time Enrollment



Special Points of Interest

- 186 New Transfer Students
- Approximately 469 Faculty are Teaching 2000+ Courses (full-time and part-time)

Retention Rates Fall 2003 to Spring 2004 By CPE Classifications

CPE Classification	Fall 2003	Spring 2004	% Retained
FTFR	1,520	1,256	83%
Freshmen (All)	2,644	2,133	81%
Sophomores	1,492	1,304	87%
Juniors (*-8)	*1,447	1,309	**91%
Seniors (*-275)	*1,889	1,486	**92%
UG-Nondegree	267	126	47%
Auditor	8	7	88%
High School	121	63	52%
Post Baccalaureate (2nd UG Degree Seekers)	60	44	73%
Graduate—Degree (*-81)	*955	629	**72%
Graduate—Nondegree	626	312	50%
TOTAL Classifications	9,509	7,413	**81%

Spring 2004 Off-Campus Enrollment

Site	Number of Classes		Undup. Headcount	*FTE
	On-Site	DL		
Ashland	26	15	343	111.94
Ashland Tech.	0	1	1	0.19
Hazard	0	8	14	2.81
Hindman	0	3	7	1.56
Jackson	5	5	86	34.06
Maysville	0	2	22	7.75
Menifee Co.	1	0	14	2.63
Mt. Sterling	36	12	457	151.19
Pikeville	3	0	65	16.25
Prestonsburg	57	19	632	222.63
West Liberty	53	17	552	208.94
Whitesburg	0	2	6	1.19
Internet	0	71	1,013	289.04
KET	4	0	85	21.44
KyVU	0	10	22	5.5
TOTAL	185	165	3,319	1077.12

Source: Office of Academic Outreach & Support, 03/31/04
*Full-Time Equivalency

*Received degrees in Fall 2003 and did not re-enroll

**Adjusted for Fall 2003 degree non-returnees

Source: Fall and spring enrollment reports to CPE (AIMS student file)

Spring 2004 data preliminary
As of March 19, 2004