

Morehead News

Formerly Rowan County News - Name Changed January, 1963

MOREHEAD, KENTUCKY, THURSDAY MORNING, JUNE 6, 1963

On Newsstands BY MAIL: In Kentucky, One Year \$3.00, Six Months \$1.50, Three Months \$1.00, One Month \$0.50. Outside Kentucky, One Year \$3.50, Six Months \$1.75, Three Months \$1.25, One Month \$0.60.

18,000 Readers
This newspaper is read by more than 18,000 people, including those in the Morehead area and those in other parts of Rowan County.

Volume No. 80

Member Kentucky Press Association

Member National Editorial Association

Number Twenty-Three

Chandler Received 55.7 Percent Here; Carried 11 Of 12

A. B. Chandler carried 11 of Rowan County's 12 precincts in last week's primary election, totaling only Morehead No. 10 and the absenteees.
Chandler's official majority here was 517 votes, out of a total of 920 cast in the top race. Chandler received 55.7 percent, his major opponent, Edward T. Breathitt Jr., 37.9 percent, and Mary Louise Faust garnered 5.1 percent, a surprisingly large number in view of the fact that she polled only about two percent statewide. The remainder went to Wilton B. Cupp.
The precinct-by-precinct tabulation of Rowan County's vote in the primary election appears elsewhere in this issue of the Morehead News.

Cranston Man Is Victim Of Hemorrhage

A 56-year-old Cranston man who was found dead in the rear seat of his car in Rodburn Hollow last Tuesday died from a cerebral hemorrhage.
That was the verdict rendered following an inquest by Coroner Jack Jones, who said John Henry Kelsey, an employee of Union Grocery Company, Morehead, apparently became ill, got into the rear of the car and suffered the fatal seizure.
Jones said Kelsey was last seen alive about 6:20 a. m. Tuesday. His car was seen on the Rodburn Hollow Road at that time. Some 15 minutes earlier he had let a number of passengers, who rode with him regularly, out of the car at Imperial Cleaners in Morehead.
"The riders said, according to Jones, that Kelsey gave them no indication he was ill.
Acquaintances and family members professed surprise at the body's being found in Rodburn Hollow, pointing out that they had no idea what Kelsey was doing in that location.
Jones said it was surmised that he became ill shortly after the riders left the car and sought out a place where he might rest, knowing that Rodburn Hollow was secluded, he apparently drove to the spot where his body was found.
Members of a US Forest Service work crew discovered Kelsey in the car about 9 a. m. They called state police, who notified the coroner.
Kelsey was a native of Rowan County. He was born July 16, 1906, a son of the late John and Lucy Conley Kelsey.
He was married to Nola Caudill and survives. Other survivors include these seven children: John Tilden Kelsey, James Clifford Kelsey.
—Turn to last page, this section



NEW HOME MANAGEMENT HOUSE—Morehead State College has purchased the John M. Palmer home at the corner of College and Elizabeth Streets to be used as a home management house. Inspecting the grounds are home economics students Betty Collins (left), a junior from Maysville, and Patty Burton, a junior from Spring Valley, O.

College Purchases Palmer Home For Home Management House

Morehead State College has purchased a 12-room house adjacent to the campus to be used as a home management house. President Adron Doran announced today.
The Board of Regents has approved the purchase of the two-story brick structure on the corner from Mrs. John M. Palmer. Occupancy will be in September following complete re-decoration and refurbishing. The structure will be under the supervision of the home economics department with home economics majors living there for one semester as a requirement in the home management course.
Dr. Doran said the Board of Regents has approved naming the structure the Palmer House, honoring the late John M. Palmer, a staunch supporter of Morehead State College.
The structure has 12,100 square feet of floor space and is on a lot 87 feet by 142 feet. The first floor has a large living room, a dining room, breakfast room, kitchen, sewing room, bath and sun porch. The second floor has four large bedrooms, a den and two full baths. The basement has a large storage area, servants' quarters and bath.
Dr. Doran said the present home management house will be used as a guest house.

May Court Adjourns; Stevens Gets Term

Rowan Circuit Court's abbreviated May term ended Friday, and the next session will convene in November.
In the only case tried Friday, Chester Stevens, charged with shooting into a motor vehicle, was found guilty and sentenced to a two-year term in the penitentiary.

Wm. Stevens, 46, Claimed At His Home

William Stevens, of the Holly section of Rowan County, died Tuesday at his home following a short illness. He was 46.
Stevens reportedly passed away as a result of a heart condition.
A son of the late John and Olin Henderson Stevens, he was born in Elliott County Oct. 6, 1916.
Surviving are his wife, Martha Lee Stevens, a stepdaughter, Deborah Kay Patterson, a brother, Bethel Stevens, Mansfield, O., and two sisters, Mrs. Myrtle Wallace, Niles, O., and Mrs. Oma Archer, Mansfield.
He was a member of the Pentecostal Church.
Funeral services will be held this (Thursday) afternoon at 2 —Turn to last page, this section

Warrants For Parking Violators Are Being Prepared

That knock on the door at some-20 Morehead homes in the near future may signal the arrival of a police officer with a warrant of arrest for parking meter violations.
A city spokesman said this week that the list, which now numbers 60 or more has been narrowed to 20, and includes only persons with five or more tickets which have been accumulated in the past year.
Record collections on parking meter violations were reported again in May, but persons who have habitually neglected to pay their penalties will be served with warrants shortly.
The 20 warrants are now in the process of being prepared.

Lack Of Money Forces Two-Month Cancellation Of County's Road Work

Rowan Fiscal Court Tuesday ordered work on the county's roads shut down for an approximate two-month period because of a lack of funds. County Judge W. C. Flannery reported this week.
The judge said the road fund contained but over \$17 at the time of the action and that fiscal court made the move to avoid a default which would carry over into the next fiscal year, which begins July 1.
At the same time, Flannery said he had placed a personal retainer on the court records indicating disapproval of deficit operations by the county government will not be run in the red as long as I am county judge.
An estimate of how much money the county road fund contains in a year was not immediately available.
Flannery said two employees were furloughed, but will be called back as soon as money becomes available, sometime after the 15th. Funds will be available from state sources at that time and work is expected to be resumed.
In another action taken Tuesday, Flannery said an additional precinct was created in Morehead by the separation of Morehead precincts 1 and 19.
The two had been combined recently because the county was redistricted in preparation for the use of voting machines.
However, Flannery said, a number of persons were unable to vote in Morehead No. 1 during the primary election and in order to alleviate the congestion, the new precinct was created.
Actually, the precinct will not be created until the next primary election. It will consist of Morehead No. 19, but its merger with Morehead No. 1 will be determined whether the new voting districts' machine will be located in the courthouse or at City Hall, where the precinct originally was located.

Memorial Day Safe For Rowan Drivers

Although traffic in Rowan County Memorial Day was characterized as "heavier than usual for a mid-week holiday," not only were there no fatal accidents, there were no automobile mishaps of any kind.
The report from Kentucky State Police here this week indicated that only two auto accidents of any kind were investigated in Rowan county during the past week, state police said.
A Saturday collision at Morehead's east city limits resulted in a citation for proper drunkenness for Jimmy Ray Fultz, 25, Morehead.
Trooper Marvin Jennings said a car driven by Fultz passed on the wrong side of a vehicle driven by Bonnie Conn, 31, of Morehead, as the Conn vehicle was attempting to make a right turn into a restaurant parking lot.
The Fultz car was damaged on the left front and the Conn car on the right front.
Injuries to two passengers resulted from a mishap 14 miles south of Morehead on Ky. 173, Sunday.
Trooper James A. Farley said a car driven by Thom Smith, 27, of LaGrange, Ind., attempted to pass a car driven by Benny C. Steele, 18, of Sandy Hook, Ky., making a left turn, Farley said, and the collision ensued.
Minor injuries were suffered by Mary Lou Hall, 25, of LaGrange, Ind., and by Alice Mansell, 18, of Langley, Ky.
No citations were issued.

Well-Known Figures To Be At MSC

Morehead State College will conduct five summer conferences featuring nationally known public figures, President Adron Doran announced today.
The conferences, held in conjunction with the summer sessions designed to aid persons in learning elementary, secondary and higher education.
Educators from throughout the nation have been invited to participate in the day-long conferences which will feature a general convocation during the morning and a panel discussion seminar program in the afternoons.
Dr. William P. Viell, one of the nation's leading science education authorities, will be the featured speaker at the first conference June 18. Dr. Viell, associate director of the Teacher Preparation Certifications Study of the National Association of State Directors of Teacher Education and Certification, will speak and serve as consultant at the Classroom Teachers Conference, The topic for the day will be "Science in the Classroom."
Eugene Howard, principal at Ridgewood High School, Norridge, Ill., will be the featured speaker at the Principals' Conference June 27.
Dr. O. G. Carmichael, consultant to the Ford Foundation and the Fund for the Advancement of Education, will speak at the Graduate Education Conference July 11. Dr. Carmichael, who lives in Asheville, N. C., is considered one of the nation's leading authorities on graduate education and has written numerous books.
John L. Buford, superintendent of the Mt. Vernon City Schools, Superintendent of the National Education Association.
The July 25 Communications Conference will feature Ben Reeves, managing editor of the Louisville Courier-Journal.
Outstanding educational authorities in Kentucky will participate in the afternoon panel discussions with the featured speakers.

Recreation Loop Set Up By JCs For All Ages

Play will begin Monday in a newly-organized Morehead Jaycee Recreation Loop.
Offering activities for all Rowan Counties, the loop still has openings in slow-pitch softball, tennis and individual play.
The loop is open to all ages sought, according to the Jaycee.
Games are slated at 5 p. m. Tuesday which have already applied for membership include Morehead Vikings, Christy Creek Minnows, Bluebird Trojans, Jays and Breez Trats. Hart said persons interested in entering a full team or playing on a team should contact Hart.

Strong Race In Rowan Won House Term For Allie Young

Allie W. Young Jr., running a strong race in Rowan County and holding his opponent to a near-standoff in Fleming and Robeson counties, won his way into the state legislature in last week's primary election.
Young carried Rowan County by 420 votes over Melvin "Frosty" Hardin, carried Robertson County by 15 votes and lost Fleming to Hardin by 61 votes, for a district-wide margin of 574.
The race for the Democratic nomination between Young and Hardin set the issue of who the district's representative will be in the next two years, since no Republican filed for the post.
In winning the first district seat, Young followed in the footsteps of his father and an older brother.
His father, the late Senator Allie W. Young, served many years in the legislature and at the time of his death was one of the state's outstanding political leaders.
The brother, the late Z. Taylor Young, also served a term in the House of Representatives from 1937-39.
Young is superintendent of West Lumber Company's extensive operations in this area.
The vote by counties:
County Young Hardin
Rowan 420 574
Fleming 832 859
Roberson 184 169
TOTAL 2230 1862

Precinct No. 19 Is Recreated To Relieve Crowding

Rowan Fiscal Court Tuesday ordered work on the county's roads shut down for an approximate two-month period because of a lack of funds. County Judge W. C. Flannery reported this week.
The judge said the road fund contained but over \$17 at the time of the action and that fiscal court made the move to avoid a default which would carry over into the next fiscal year, which begins July 1.
At the same time, Flannery said he had placed a personal retainer on the court records indicating disapproval of deficit operations by the county government will not be run in the red as long as I am county judge.
An estimate of how much money the county road fund contains in a year was not immediately available.
Flannery said two employees were furloughed, but will be called back as soon as money becomes available, sometime after the 15th. Funds will be available from state sources at that time and work is expected to be resumed.
In another action taken Tuesday, Flannery said an additional precinct was created in Morehead by the separation of Morehead precincts 1 and 19.
The two had been combined recently because the county was redistricted in preparation for the use of voting machines.
However, Flannery said, a number of persons were unable to vote in Morehead No. 1 during the primary election and in order to alleviate the congestion, the new precinct was created.
Actually, the precinct will not be created until the next primary election. It will consist of Morehead No. 19, but its merger with Morehead No. 1 will be determined whether the new voting districts' machine will be located in the courthouse or at City Hall, where the precinct originally was located.

Work On Housing Job To Start By June 17

Completion Set By June 10 Of Next Year

"You are hereby directed to begin work on or before June 17, 1963 under the provisions of your contract."
With these words, Morehead's Municipal Housing Commission this week signalled the start of construction in its 30-unit low-rent housing project.
Culminating a four-year effort, the commission last Wednesday signed a \$308,476 contract with the A. B. Newton Company, Vidalia, Ga., calling for completion of the job within 360 days. The actual deadline is June 10, 1964.
The 30 duplex units, on which rents will range from \$36 to \$53 a month, plus utilities will be of masonry and frame construction. Furnishings for each unit will be a range, a refrigerator, window shades, screens, etc.
The inspectors will supervise the job. One will represent the Morehead Municipal Housing Commission, one the architect, and one the Public Housing Administration, since money for the project, more than \$450,000 in all, is being furnished by the Federal government.
Most of the work is expected to —Turn to last page, this section



NEARLY SAME — This is the 84th Terrace Housing project in Mt. Sterling, which Morehead's low-rent housing project will closely resemble when it is completed next month. The contract for the local job was let last week and work is to start prior to June 17. Brick and frame construction will be used. Rents will range from \$36-53 monthly.

MSC Adds 10 To Faculty For Summer

Ten additional persons have been added to the Morehead State College faculty for the summer term. President Adron Doran announced this week.
Teaching during the eight-week summer term will be: G. H. Parvins, professor of Business at the University of Tennessee, who will teach in the Business Education Department; Leroy Dorsey, principal of the Morehead Elementary School who will be in the Division of Professional Education; William Greer, assistant professor of Accounting at Middle Tennessee State College, who will teach accounting; Betty Hatfield, who will instruct in library science and Howard Setzer, Rowan County High School, who will be in the Division of Science and Mathematics.
The Breckinridge Training School will be: Sude Boardman, North Middletown; Earl Smith, Breathitt County; Max Carter, Morehead; Bernice Jackson, Rio de Janeiro, Brazil and Nancy West, Fayette County.

WANTED ADS

Classified Advertising Rates
 No Classified Ads Accepted After 12 Noon Tuesday
 Per word, first insertion _____
 Per word each subsequent insertion of same ad without any changes _____
 Minimum charge (first insertion) \$1.00
 Minimum charge (each subsequent insertion) _____
 Display Classified Advertising, per inch _____
 Entered as Second Class Mailing Matter at Post Office — Morehead, Ky.

FARM FOR SALE
 30 Acres, about 5 miles east of Morehead, Ky. on US 60 near Eugene White Lumber Co. Has a good 11-room house with bath, forced air heating system, just installed; 68 tobacco base, new barn, pond and 30 acres bottom land. Call ST 4-5821. c-2

FOR SALE
 One No. 35 Corley 2-black H. sawmill, 32-in. saw, sawdust conveyor with U. D. 6 International diesel power unit. Also an oliger. See Mrs. Helen Trumbo, Toledo, Ky. or call 798-2431. c-2

FOR RENT
 Unfurnished or partly furnished 3-room apartment. Also one sleeping room. Call ST 4-5110 or ST 4-4382. c-2

FOR RENT
 Business room. See Frank Hahn at The Big Store. c-2

FOR RENT
 Three apartments; 1 sleeping room. H. M. Henderson, Phone State 4-5067. c-2

FOR RENT
 Trailer parking space at 811 West Main Street. Call ST 4-5288. c-2

ESTABLISHED territory open with
 Avon Cosmetics in Craven area. Write District Manager, P. O. Box 1402, Huntington, W. Va. p-24

USED CARS
 '58 FORD
 5-DOOR SEDAN, 6-CYLINDER STANDARD SHIFT

'58 PLYMOUTH
 4-CYLINDER STANDARD SHIFT

'56 CHEVROLET
 4-DOOR SEDAN POWERGLIDE, 6-CYLINDER

'56 CHEVROLET
 2-DOOR SEDAN, POWERGLIDE, POWER WINDOWS, RADIO

'56 CHEVROLET
 3-DOOR SEDAN, 6-CYLINDER STANDARD SHIFT

'55 CHEVROLET
 2-DOOR SEDAN, 4-CYLINDER

'54 FORD
 3-DOOR SEDAN

'54 PONTIAC
 4-DOOR SEDAN

'53 MERCURY
 2-DOOR SEDAN

'52 CHEVROLET
 2-DOOR SEDAN

USED TRUCKS
 '59 CHEVROLET
 TRACTOR AND TRAILER

'57 FORD
 1-TON, FLAT

'55 CHEVROLET
 1/2-TON, GREEN

'55 CHEVROLET
 1/2-TON, BLACK

'55 GMC
 1/2-TON, AUTOMATIC TRANSMISSION

All Used Cars Are Checked for Alignment on the New "John Bean" Visaligner!

Midland Trail Garage
 "Pioneers in Ruston County Transportation"

Political Announcements



DEMOCRATIC PARTY

GENERAL ELECTION TUESDAY, NOVEMBER 5, 1963
FOR STATE SENATOR 27th District
 (Rowan, Bath, Menifee, Morgan, Fleming and Mason Counties.)
ED J. KELLY

FOR COMMONWEALTH ATTORNEY
 (Rowan, Bath, Montgomery and Menifee Counties)
ELIJAH M. HOGGE

FOR REPRESENTATIVE 1st District — Rowan, Fleming and Robertson Counties)
ALLIE W. YOUNG, JR.

FOR CIRCUIT JUDGE (21st Judicial District — Rowan, Bath, Montgomery and Menifee Counties)
JOHN J. WINN

FOR CIRCUIT COURT CLERK WATHAN ARMSTRONG

MONUMENTS
 All sizes and styles. See Harold Mynhier at Stucky's Funeral Home or call ST 4-4066. c-2

TERMINES ATTACKING YOUR HOMEY
 Call — **ROWAN FARMERS SUPPLY ST 4-4723**
 Agents For — **Stewart's Termites Pest Control Mt. Sterling, Ky.** c-2

CARD OF THANKS
 We take this time to express our appreciation for the many kindnesses shown us during the illness and death of our loved one, Robert M. Nickell. We wish especially to thank all those who sent flowers and food. Funeral Home for their courteous service. Reverends Carl Fralay and John Conley for their words of comfort and those who sang. Words cannot express our deep gratitude to all our neighbors and friends. — The Family. c-2

FRETS ACHE, ITCH?
 4 of all your homes are in the feet. No wonder they ache, swell, perspire, itch. Bathe feet twice daily with T-4. Solution for relief of the 32 bones, or plus ligaments. Cures athlete's foot, too (sloughs infection—watch healthy skin replace it) or your sock back at any drug store. Most pleased in 10 MINUTE. TODAY at BATTISON DRUG. c-2

IN JUST 15 MINUTES IF YOU HAVE TO SCRATCH YOUR ITCH.
 Your 48¢ back at any drug store. Quick-drying ITCH-NEOT-DEADENS the itch and burning. Antiseptic action kills germs to speed healing. Fine for eczema, insect bites, other surface rashes. NOW at BATTISON DRUG. c-2

REPUBLICAN PARTY
FOR CIRCUIT COURT CLERK W. H. "HERB" BRADLEY

FOR CIRCUIT JUDGE (21st Judicial District — Rowan, Bath, Montgomery and Menifee Counties)
JOHN J. WINN

WANTED TO BUY ANTIQUES
 Wash bowl and pitcher sets complete; china, cut glass, colored glass, Haviland china, iron stone china, gold cost; drop leaf tables, corner cabinets, chest of drawers, wash stands, old bureaus, dressers, blanket chests, grandfather clocks, early iron, copper and brass; weather vane, mechanical banks, marble top tables, colored oil lamps, hanging lamps, gold knob chairs, wooden bows, coffee mills, cedar buckets and churns, brass kettles, old picture frames; old cap and ball pistols and rifles, powder horns, powder flasks; dinner bells, sideboards and one and two drawer tables. Please give location when writing. Interested in one piece or a complete collection or estate. Call or write REISSER ANTIQUE SHOP, 121 West Second St., phone 564-3652, Mayville, Ky. p-25

YOUR HEADQUARTERS FOR UPHOLSTERY MATERIAL
 Naugahyde leatherette and Nylon all beautiful colors including wall-to-wall. Wholesale. Last Chance Discount House, 2 miles from Flemingsburg Road. Phone State 4-5057. Open 7 days week. Wholesale and retail. c-2

The Home Agent

Buy Smaller Amounts Of Good Furniture, Not Cheap Pieces
 By Janet Boyd
 Home Demonstration Agent
 Many young couples, trying to make their money go farther, often buy very cheap furniture and this is a waste of money in the long run. Live with just the essentials and save money for worthwhile furniture.
 First, write out what you'd like to have. Then list what you can get along with. Buy these pieces first—add the rest as money is available.
 Since tastes in furniture change over the years try to select pieces with simple lines that will combine well with furniture you may select later. Look for furnish such pieces with no one use; many years as you change homes or add new furniture in the home.
 Here is an example of furniture that can be used in several places: Two low storage chests that are plain and simple in design can be used in the living room, the dining room, the bedroom and you have a desk with storage space. Construction of furniture is important, too. A flimsy piece of furniture that will give up under pressure materials and construction are a waste of money. You get a reliable dealer who will stand back of his merchandise. Don't be lulled by a low price—a reliable dealer will be glad to answer them.
 Before you buy, check as many construction points as possible. Here are some suggestions:
 Make sure the furniture stands firmly on the floor and consists of four to make it wobble. Check all movable parts — drawers, drop leaves, etc. — to see that they operate easily and steadily. See that all joints are tightly and smoothly fitted together.
 Make sure the finish is hard, smooth and evenly applied. The best finish will have a nice sheen but not a brilliant shine. Look carefully at places that receive a lot of wear, such as tops of tables, counters, bookcases, and chests. The most serviceable will resist scratching, denting, breaking, wetting, and staining.
 Check handles, knobs and hinges, since these parts receive much wear; hardwoods, metals and some plastics are most serviceable. Lower parts of furniture, such as table legs, medium-dark wood or metal with finishes that will not chip or scratch easily are drawers also are easily nicked, so make sure the materials are durable. Runners of drawers should be made of hardwoods or non-corrosive metals.
 Old Hat Trick
 Use a little spray-on starch to freshen the trimming of last year's spring bonnet. Stretch the veiling over crumpled tissue paper and spray lightly. When thoroughly dry, the veiling will be crisp and

LEGAL NOTICE
 Sally Gullett has applied for a permit at the office of Rowan County Court Clerk Otis W. Blinn to operate a place of entertainment approximately 7 miles north of Morehead, Ky., on Ky. Highway 32, at the former location of the Pat & Mike Drive-In, to be owned and operated by Sally Gullett and to be known as Sally Drive-In. c-2

Early Mowing Aid To Development Of Most Pastures
 By Adrian M. Razor County Agent
 Mowing of pastures does much to improve the grazing of it by livestock. For one thing, it stimulates the growth of desirable plants such as your grasses and legumes and another thing it destroys or removes those undesirable plants such as weeds and others that come into all fields; therefore, mowing improves the quality of pastures.
 Warren Thompson, Extension Pasture Specialist, says early mowing will keep cool season grasses such as fescue, orchard grass, bluegrass and timothy from growing dormant and that white, ladina and red clover will tend to respond in the same way.
 The earlier this chore is done, the better the chance is to improve pasture quality. Pasture mowing should be done as animal stocking rates indicate or as weeds tend to take over.

GOING AWAY?
 1. Lock all doors and windows
 2. Stop the milk and newspaper delivery
 3. Notify the post office — and the police
 4. RENT A SAFE DEPOSIT BOX FROM US!
 5. Carry our Travelers Checks

THE CITIZENS BANK
 "Grow With Us" — Checking Accounts • Savings Accounts • Loans
 Open A Savings Account Today — Use Our Night Depository
 MEMBER FEDERAL DEPOSIT INSURANCE CORP.

INTEREST FOR YOU

Books Donated To Library By Columbia Gulf

Two books were presented to Librarian Ward Williams of the Rowan County High School Library Tuesday by R. C. Powell, representative Columbia Gulf Transmission Company. This is the first of such contributions to be made by Columbia Gulf as a program designed to assist libraries in obtaining needed volumes.
 One of the books contributed is "The Dynamic Natural Gas Industry," a current study of the nation's sixth largest industry. Powell, section superintendent at Columbia Gulf's Morehead Station, said his company not only provides information to the public about the gas industry, but also contributes to the community through various library collections.
 Powell said his company has contributed to libraries in Louisiana, Mississippi, Tennessee and Kentucky, the states where CGT has operating facilities.

NEW FCC LAWYER
 A 34-year-old lawyer, E. William Henry will replace Newton N. Minow as chairman of the Federal Communications Commission. President Kennedy chose the lawyer following Minow's resignation five years before his term ends. After his resignation, to take effect June 1, Minow will become executive vice president and general counsel of Encyclopedia Britannica, Inc.

THURSDAY-FRIDAY June 6-7
 "Susan Slade"
 — In Color —
 Starring Troy Donahue and Conita Stevens

SATURDAY June 8
 "The Firebrand"
 — In CinemaScope and Color —
 Starring Kent Taylor and Lisa Montell

PLUS
 "Misty"
 — In CinemaScope and Color —
 Starring David Ladd and Pam Smith

AND
 "White Warrior"
 — In Color —
 Starring Steve Reeves and Georgia Moll

SUNDAY - MONDAY June 9-10
 "Hatari"
 — In Color —
 Starring John Wayne, Elsa Martinelli and Red Buttons

TUESDAY - WEDNESDAY June 11-12
 "Eegah"
 — In Color —
 Starring Arch Hall Jr. and Mariynn Manning

WEDNESDAY IS FAMILY NIGHT CAR LOAD FOR \$1.30

THURSDAY-FRIDAY June 13-14
 "Jessica"
 — In CinemaScope and Color —
 Starring Maurice Chevalier and Angie Dickenson

COMING SOON
 "Spartacus"
 "The Lion"

EAST KENTUCKY GRADED LAMB SHOW AND SALE
 Saturday, June 8th, 1963
FARMERS STOCKYARDS
 Flemingsburg, Kentucky
 Sponsored By —
 KENTUCKY DEPARTMENT OF AGRICULTURE
 FARMERS STOCKYARDS
 FARMERS DEPOSIT BANK
 GORMAN CONSTRUCTION CO.
 PEOPLES BANK
 \$700.00 In Premiums

NORGE LAUNDRY AND CLEANING VILLAGE
 SAVE on DRYCLEANING FULL LOAD FOR \$1.50
 CLEAN 50 ties THAT'S ONLY 5¢ EACH

A SELECTION OF FORDS FROM THE 'BIG LOT'

1959 Ford Fairlane 500
 2-Door hardtop, automatic, radio and heater; power steering, hi-tread w/w tires, local owner. The very sharpest.
 \$1,195

1957 Ford Country Sedan Wagon
 Automatic transmission, radio and heater, nine passenger model. Very good condition throughout.
 \$695

1957 Ford Fairlane 500 Hardtop
 Automatic transmission, radio and heater, power brakes. Drives out A-1.
 \$495

1956 Ford Fairlane
 4-Door, automatic, radio and heater. Extra sharp.
 \$545

1955 Ford Fairlane Convertible
 Automatic transmission, radio and heater, excellent tires. Sharp little car.
 \$395

1955 Ford Fairlane
 2-Door hardtop, automatic, radio and heater, new rubber. Drives out A-1.
 \$245

1956 Ford Fairlane
 2-Door, automatic, radio and heater. Good car.
 \$195

1956 Ford
 2-Door, automatic, good mechanical condition.
 \$125

Many More To Choose From — THE BIG LOT —
MOREHEAD MOTOR SALES
 U.S. 60 EAST — MOREHEAD, KY.

SAVE ON IGA DIME BUYS for JUNE

QUANTITY RIGHTS RESERVED



Look Over This Terrific 10¢ Sale —
So Many Items Never Before Offered
For One Thin Dime. Don't Miss This One!

MAMMOTH CHEESE SALE!

Now on display... our specially ordered, unbelievably gigantic cheddar cheese! It's mammoth in size, has a flavor you'll savor and, at this bulk-selling price, is sure to be the fastest "moving" cheese you'll ever see. Please see it early to save us the embarrassment of showing you where it was. Big as it is...it won't last long!



BULK CHEDDAR CHEESE **59¢**
lb.



Royal Guest
FROZEN FOOD

- Peas
- Corn
- French Fries
- Spinach

10¢

LIBBY'S
Cream Style And Whole Kernel
CORN

10¢

303 Can

IGA
ICE MILK
1/2 Gal. **49¢**

BLUE BONNET
MARGARINE
1-Lb. Carton
4 For **99¢**

IGA Pure JELLIES

- Apple
 - Grape
 - Elderberry
- 10-Oz. Jar **10¢**



IGA C-M-C
Detergent

Large Size **19¢**



Woodbury **BATH SOAP** **10¢** Bush's - 5 Varieties **BEANS** **10¢**

Showboat **PORK & BEANS** **10¢** 14 1/2 Oz. Can

Valley Gem Dry **PEAS** **10¢** 300 Can

Southern Gem **LIMA BEANS** **10¢** 300 Can

5 Flavors **HI-C DRINKS** **10¢** 12-Oz. Can

Showboat **SPAGHETTI** **10¢** 300 Can With Tomato Sauce

OVEN FRESH
BREAD

16-Oz. Loaf **10¢**

Limit 2 With \$3.00 Order Or More

SPAM **89¢** 12-Oz. Can 2 For

IGA Saltine **CRACKERS** **19¢** 1-Lb. Box

Maxwell House **COFFEE** **\$1.59** New 3-Lb. Can

PORK ROAST
Lb. **39¢**

Bananas
Large golden-ripe bananas, delicious in pies, cakes, and salads...or to slice on your favorite cereal.
Lb. **10¢**

Large, Sweet California **Cantaloupes** 3 For \$1.00
26-Lb. Average **Watermelons** 99¢
Georgia Cardinals **Peaches** 2 Lbs. 29¢
Home Grown **Green Onions** 2 For 19¢

Allen's
IGA
8-6 Mon.-Thurs.
8-8 Fri.-Sat.
FOODLINER

TableRite Sliced **PORK SHOULDER** Lb. **39¢**
TableRite **SPARERIBS** Small Lean Lb. **43¢**
TableRite Sliced **BACON** Lb. **49¢**
Fresh Frozen **TURKEY BREAST** Lb. **89¢**



'PRINCESS' POURS—Kentucky Dairy Princess, Jane Harrison, Farmington, poured a glass of milk for State June Dairy Month Chairman, Dr. Dwight M. Smith, head of the Dairy Section, University of Kentucky, when they met to discuss plans for June Dairy Month recently.

Reds Are Champs Of First Half Play In M'head Little League

By Larry Shidom
The Morehead Little League's Reds asserted themselves of winning the first half title with a 7-2 win over the Indians Tuesday. Jerry Calvert allowed the Tribe six hits, while the Reds netted four, but the Indians had 13 errors, all factors in the scoring. Stephen Lewis hurled a shutout record of 18 strikeouts in giving the Dodgers a 7-0 win over the hit, walked six and committed two miscues in his fine effort. Steve Calvert was handled the defeat.

Crosley Caudill and Lemmy Morrison had two and three hits, respectively, for the 'Bums.' Dave Williams collected the Yanks' only safety.

The Reds literally ran away with a victory in stomping the hapless Giants, 13-3. Eddie Hayes hit safely four times and drove in three for the Bobby J. Calvert received credit for the win.

Eddie Hayes connected for three hits for the losers Jim Holbrook batted in four runs, while Bobby J. Calvert received credit for the win.

The Reds moved into position to take the first half championship Saturday with a 7-3 win over the Tigers. Bobby Mays had three hits, Dave Greer was the winning pitcher, while Walt Cassidy suffered the loss.

The Giants, paced by Bobby Needham's solo homer, handed the Yanks another loss by a 10-5 margin. Eddie Hayes also shared the hitting spotlight with three hits in helping Needham capture the pitching victory. Don Helwig was the loser.

The Yanks broke lose for three runs in the bottom of the sixth inning to defeat the Tigers 11-10. Mike Hudson hit a bases-empty homer for the losers. Steve Calvert was the winning pitcher and Drew Lane took the loss.

Leading hitters:
Mike Hudson 625
Eddie Hayes 619
Crosley Caudill 583
Bobby Mayo 569
Stephen Lewis 538

First half standings:
Team W L
Reds 4 2
Dodgers 4 2
Indians 4 2
Yanks 2 4
Giants 2 4

Next week's schedule:
Tomorrow (Friday) — First half playoffs.
Monday — Reds vs Dodgers.
Tuesday — Yanks vs Indians.
Wednesday — Indians vs Dodgers.
Giants vs Tigers.

Rowan Real Estate Transfers

William Ambrugey and Jacqueline Ambrugey to Albert Patton and Pearl Patton, two tracts of land, May 6.
Boone Hollan Jr. and Jean Hollan to Norman Elam and Betty Jean Elam, lot in Green Valley Acres, May 14.

Langley Wilson and Daisy Wilson to Bernice Wilson, tract on Big Perry, May 25.
Bral Curtis, Myrtle Curtis, Elwood Curtis and Donna Curtis to Everett Dewitt and Nerwie Dewitt, 160 acres on Brushy Fork, May 17.

Carrie Harman to Chloe Hall, 50 acres on Road Branch and 50 acres on North Fork of Triplet Creek, Dec. 3, 1962.

Earl Hall, Ellison Hall, Arthur Hall, Callie Hall, Mary Coleman, Bennie J. Hall, Belva Hall, Olive Jean Thomson, Dempsey Thompson and Lillian Hall to Chloe Hall, 50 acres on Road Branch and 50 acres on North Fork of Triplet Creek, Dec. 1, 1962.

Jeanne Wilkin, Dale Wilkin, Gene Garrison and William Garrison to Chloe Hall, 50 acres on Road Branch and 50 acres on North Fork of Triplet Creek, Feb. 11, 1962.

Woodrow Hall and Rose Hall to Chloe Hall, 50 acres on Road Branch and 50 acres on North Fork of Triplet Creek, Feb. 2, 1962.

Flora Hall and Jessie Hall to Chloe Hall, 50 acres on Road Branch and 50 acres on North Fork of Triplet Creek, Feb. 4, 1962.

Ethel Edington to Commonwealth of Kentucky, property on Main Street, Morehead, May 3.

Etta Froctor, Ollie Froctor and Somerset Refinery, Inc. to Commonwealth of Kentucky, property on Main Street, Morehead, May 3.

Hiram Kiser and Fannie Kiser to Louella and Tommie Selby, one acre tract, June 1.

Willard Logan and Rosa Logan to Paul White, tract on Rock Fork of Triplet Creek, June 1.

Robert Day and Lorene Day to Commonwealth of Kentucky, property on Main Street, Morehead, May 2.

Curt Hutchinson and Emma Hutchinson to Arlie Donahue and Jewell Donahue, lot in Green Valley Acres, May 31.

E. M. Hogge and Norma Hogge to Harry T. Queen and Eleanor G. Queen, lot on Second Street, Morehead, May 25.

Ollie Burns and Minnie Burns to Rowan County, tract of land, May 21.



GIANT CATCH — Tom Ellis, a June graduate of Morehead State College has signed a bonus contract with the San Francisco Giants. A native of Amelia, O., Ellis hit over 200 during three seasons as an outfielder at MSC. An all-Ohio Valley Conference baseball performer, Ellis averaged 4.9 points per game with the Eagle basketball team during his senior year.

Results From Nearby Counties

These are the results of the race between A. B. Chandler and Edward T. Breathitt in last week's primary election in nearby counties:

| County | Chandler | Breathitt |
|------------|----------|-----------|
| Blair | 1962 | 1767 |
| Elliot | 1254 | 1525 |
| Morgan | 1754 | 1893 |
| Carter | 1562 | 1489 |
| Fleming | 1380 | 2184 |
| Montgomery | 2072 | 1853 |
| Mason | 1963 | 2198 |
| Greenup | 2170 | 2780 |
| Breathitt | 1343 | 3483 |
| Johnson | 1088 | 1111 |
| Knott | 2231 | 2665 |
| Robertson | 466 | 384 |
| Boyd | 3342 | 3745 |
| Lewis | 550 | 625 |
| Magoffin | 1104 | 1182 |

State Unit, KPA Members Set Dual Program On Safety

An intensive program to cut right to the heart of Kentucky's public safety needs will be a joint project of the Kentucky Department of Public Safety and the Kentucky Press Association safety committee during the remainder of 1963.

Developed by Press Association Safety Committee Chairman Ed Templein in cooperation with State Safety Commissioner Glenn Lovern and his staff, the program will hinge on monthly themes highlighting salient safety needs.

Getting under way in June, the themes announced by Safety Commissioner Lovern are: June — speeding; July — improper passing; August — reckless driving; September — vehicle safety inspection; October — re-examination of licensed drivers; November — winter driving and holiday hazards including drunken driving.

Commissioner Lovern explained that "by stressing these major problems one at a time we can more effectively portray them to the public."

The program will consist of news releases, editorial cartoons, and suggested newspaper editorials.

The average club, or organization, will grab almost any excuse for a supper.

We Have A Complete Line Of
Infant Wear And Supplies
● RECEIVING BLANKETS ● DIAPERS
● TRAINING PANTS ● BABY BOTTLES

Everything For The Infant
At The Lowest Prices In Town

CRADLE SHOPPE
(Located in Bays-Turner TV & Radio Repair Shop)
WEST MAIN STREET — MOREHEAD

Thank You . . .

To the Citizens of Rowan County who voted for me in the recent election I wish to offer my sincere thanks.

To all the residents of Rowan County I wish to say that I am your representative in the State Senate and I hope you will come to me with your wishes in regard to legislation and other services I can perform for you.

Ed J. Kelly

THE CORONER'S CHOICE

need not affect the family's decision!

At any time the family may legally over-ride the Coroner's suggestion and call in the funeral home it prefers. A call to Lane Funeral Home insures prompt attention without embarrassment.

LANE FUNERAL HOME
Morehead, Ky. — Phone ST 44983

He's always ready to help you do your banking

Men of the Postal Service are helping thousands to do their banking . . . make deposits, withdrawals, meet loan payments. When you are extra busy or on a trip — they'll also help you to do your banking by mail. Be ready. Ask for our banking-by-mail forms now.

PEOPLES BANK OF MOREHEAD

Next week's schedule:
Tomorrow (Friday) — First half playoffs.
Monday — Reds vs Dodgers.
Tuesday — Yanks vs Indians.
Wednesday — Indians vs Dodgers.
Giants vs Tigers.

VACATION SPECIALS!



Let us show you the year's biggest savings—just in time for your vacation! Let us show you the biggest selection of models in the industry. Hit the open road this summer in a Super Torque Ford, Fairlane or Falcon—the cars with total performance!

CHECK THE VACATION SPECIALS AT YOUR
Ford Dealer's Spring road show

ROWAN MOTOR SALES
117 WEST MAIN ST. MOREHEAD, KY.
ONLY YOUR FORD DEALER HAS USED CARS AND TRUCKS

9,222 TB Cases Listed By State Health Group

The State Register of tuberculosis cases has been brought up-to-date with 9,222 active and inactive cases listed, according to M. Stuart Lauder, M. D., C. M., director of the program for the Kentucky State Department of Health.

Dr. Lauder noted that this was a reduction of the total number of cases from 16,986. The greater part of this has been in the inactive cases which have come down from 14,678 to 5,924 largely due to omitting cases which have not been heard from in the past five years. If these cases turn up in the future, they will again be listed with complete information.

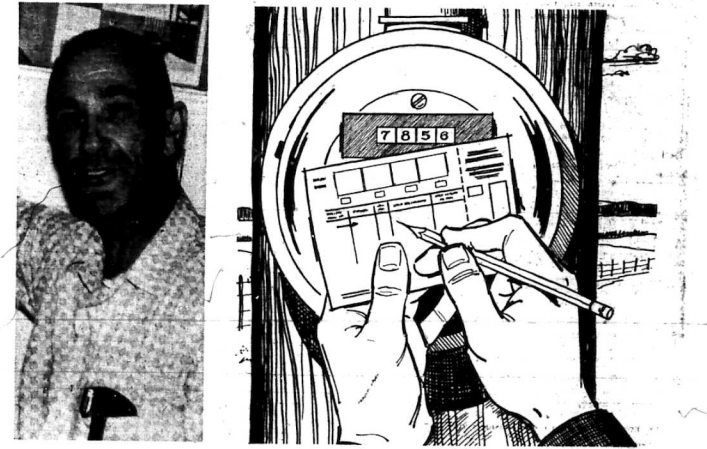
On the other hand, Dr. Lauder stated, the number of active cases has increased from 2,298 which represents, to a considerable extent, better reporting and case finding.

Work is continuing on setting up county registers and should be completed within a year's time.

The county registers which list all active tuberculosis cases in a county, all sputum positive cases, all on drug therapy, and those in need of further supervision are expected to improve reporting of tuberculosis and help the county health officers and public health nurses keep in touch with cases. "Tuberculosis control is no better than its bookkeeping," Dr. Lauder stated.

It might be a good idea to remind everybody that Father's Day is about two weeks away.

Israel wants stronger U. S. policy in Mideast.



"I'm a member and an owner . . . not just a customer . . . of Fleming-Mason Rural Electric Co-op."

says W. B. Goodpaster
Goodpaster's Furniture
Salt Lick, Kentucky

"The first thing I like about my co-op is the fine, dependable, low-cost power I get. The second thing I like is the fact that when I go to meetings and vote on issues I'm taking an active part as an important owner-member."

Doing things for ourselves is a vital part of the American way of life. When farmers decided—more than 25 years ago—that there was no place for them to buy electric power; they banded together in rural electric co-ops to get their own power. An outstanding example of ingenuity and individual enterprise that today benefits, not only the farmer, but everyone else in Kentucky. Because farmers are more prosperous and efficient, thanks to rural electricity, all Kentucky is more prosperous.

Fleming-Mason Rural Electric Co-op

KENTUCKY'S RURAL ELECTRIC CO-OPS HELP EVERYONE

Society

CAUDILL FAMILY REUNION IS HELD

The reunion of the family of the late Martin Caudill was held Sunday at the home of Mr. and Mrs. Sias Blair, Christy Creek road. A potluck dinner was served at noon. Members of the immediate family attending included: Mrs. Lelia Flowers, Huntington, W. Va.; Mr. and Mrs. Noah Caudill, Mr. and Mrs. Bill Christy and family and Mrs. Dona Bentley, her daughters and their children, all of Catlettsburg; Mrs. Hazel Miller and family and Everett Caudill, Springfield, O.; Mr. and Mrs. R. W. Taylor, Covington, Va.; and Orville Caudill, RFD 3, Morehead.

TEA AND SHOWER HONOR Mrs. BROWN

A tea and wedding shower honoring a recent bride, Mrs. Jacqueline Caudill Brown, was given last Saturday afternoon at the home of Mrs. Parnell Martindale. Co-hostesses were Mrs. Martinale and Mrs. Madeline Jack Cecil. Other guests included Mrs. Audrey Alfrey, Sterling Johnson, Oscar Calvert, George Beach, Vivian Young and Maude Clay.

ATTEND UK ALUMNI MEET IN LEXINGTON

Mr. and Mrs. Roger Caudill spent Friday and Saturday in Lexington where they attended the University of Kentucky Alumni Association seminar. Highlights of the two-day session included a reception for speakers and faculty members on Friday evening and a garden party given Saturday afternoon by Mr. and Mrs. Hampton Adams. The annual reunion banquet and presentation of awards for distinguished service was held Saturday evening.

REBEKAS HONOR STATE PRESIDENT

A dinner honoring the state president, Mrs. Elizabeth Shearer, was served at the regular meeting of the Farmers Rebekah Lodge on Thursday evening, May 23. Mrs. Shearer gave a short talk on planned reports for the Rebekahs and Odd Fellows Lodge in Lexington. Mrs. Nell Kash, noble craft, presided at the business discussion.

LEGION AUXILIARY WILL MEET FRIDAY

The American Legion Auxiliary will meet tomorrow (Friday) evening at 6:30 at the home of Mrs. Grace Ford for the regular monthly assembly.

A potluck dinner honoring Mrs. Ford's birthday, which was Tuesday, will be served prior to the business discussion.

HOMEMAKERS MEET AT CLEARFIELD

The Clearfield Homemakers will meet tomorrow (Friday) evening at 6:30 at the home of Mrs. Florence Mitchell in Clearfield, Pa. The purpose of the study of tomorrow's lesson and a business period, W. T. Garey gave a talk and showed slides taken during his recent trip to Europe.

Mrs. Mitchell served refreshments to Mesdames Bessie Swert, Viola Workman, Maude Caudill, Gladys Workman, Sue Howard, Regina Riggsby, Beulah Harmon and Ethel Black, members; and Mr. and Mrs. Garey, guests.

RELATIVES HERE FOR NICKELL SERVICES

Relatives from out of town here last week to attend funeral services for Mr. Robert M. Nickell included the following nephews and nieces: John Paul Nickell, Los Angeles, Calif.; Grover Lee Nickell, Dallas, Tex.; Mr. and Mrs. Stanley Clark and Mr. and Mrs. Garland Vanhook, Ashland, Mo.; Mr. and Mrs. Bud Hunt and Mr. and Mrs. Cecil Carey, Salt Lake City, Utah; Dr. W. T. Nickell of Jackson, Miss., was ill and unable to be here at the time of the death of his brother.

VETERANS GROUP AUXILIARY MEETS

The auxiliary of the Veterans of World War I met Saturday at the Rowan County Health Center for a potluck dinner preceding the regular meeting at the Court-house.

Mrs. Anna Jones, president, presiding and the chaplain, Mrs. Stella Lee, gave the opening and closing prayers. The secretary's report was given by Mrs. Lucy Parker.

The group is asking for contributions of eye-glasses, canceled stamps and greeting cards to be used for disabled veterans and needy persons.

Others attending the session were Mrs. Lizzie Lowe, Mrs. C.



MOREHEAD'S MISS RACONTEUR—Mrs. Adron Doran, center, wife of the Morehead State College book at Miss Racountor's. Justice Coomer Smith, Lodlow, who was the 1942 "Miss Racountor," beams her approval. Miss Howell, a senior from Haleyville, Ala., was runner-up in the Miss Alabama contest in 1946 and was Homecoming Queen at Morehead last year.

Week end guests at the home of Mr. and Mrs. Charlie Thompson and Mrs. J. B. Thompson and daughter, Mr. and Mrs. Clifton Thompson and family, Mr. and Mrs. Lundford May and children and Mr. and Mrs. Sam May and daughter.

Dr. and Mrs. C. C. Mayhall have returned from Highland, Calif. where they visited their daughter and family, Capt. and Mrs. E. H. Seborg, Brian and Kevin.

Mrs. Myrtle Cassidy of Hammond, Ind. has arrived for a few weeks' visit with relatives and friends in Morehead and Farmers.

Mrs. Adron Doran Heads KFWC Delegation To National Meet

Twenty members of the Kentucky Federation of Women's Clubs will attend the general Federation of Women's Clubs annual convention in Milwaukee June 10-14.

The Kentucky representatives will be Mrs. President Lyndon B. Johnson, Hildegarde and Edward H. Morrow, director of the U. S. Information Agency, speak during the five-day convention.

Heading the Kentucky delegation will be Mrs. Adron Doran, Morehead, president of the KFWC; other KFWC officers who will attend are Mrs. Edward Hamilton, Bardstow, 2nd vice president; Mrs. Gene Williams, Elizabethtown, 4th vice president; Mrs. E. Cynthia, Richmond, aide to the President; Mrs. Tommy Preston, Cynthia, Junior First Art's chairman, Miss Betty Gunning, Vine Grove, CARE chairman; and Mrs. Oscar Showards; Pikeville, public affairs chairman.

KFWC members holding GFWC offices who will attend are: C. B. Morgan, Leitchfield, Status son, June 3.

Rowan County High Homemakers Are At State Convention

"Future Homemakers Promote Education" is the theme of the 18th annual state meeting of the Kentucky Association of Future Homemakers of America, which opened Tuesday and closes today (Thursday) at Western Kentucky State College.

Among the 600 members and advisers attending the meeting are Mary Kay Ashford, Sharon-Will Baker, Mrs. and Mrs. Paul Carter, Mrs. Card Alderman and Mrs. Marie Gulley and son, Carl Edward, Michael Gulley, Mr. and Mrs. Herb Christian, Dee Jarrell, Ervin Cooper, Debbie Bigelow and Wandia Mae Trent, all of Morehead.

Recent weekend guests at the home of Mr. Harrison Ramey were Mr. and Mrs. Lyle Vanness and grandson, Markie Davis, Mr. and Mrs. Taylor Ramey and Mr. and Mrs. H. B. Alfrey and daughter, Susie, all of Shelby, O.; Mr. and Mrs. Walter Griffith and daughters, Mansfield, O.; and Mrs. Maggie Reynolds, Salt Lake.

Miss Williams Will Sing in the State Chorus, While Miss Ashford Will Head the State Homemakers Delegation

The session this (Thursday) morning will hear Dr. Walter Kerr, executive director of the Youth Crusade for God and Freedom, speak on "Youth in Today's World."

When a man is satisfied that he is qualified for a position the law of gravity cannot measure the attraction.

Nursing School To Graduate Fourth Class On Wednesday

Commencement exercises for the fourth graduating class of the School of Professional Nursing, Miners Memorial Hospital Association, will be held Wednesday, at 7:30 p. m. in Harlan High School, which was announced today by John Newdorp, M. D. Medical Administrator, of the association.

The commencement address will be given by Miss Frances McKenna, Executive Secretary of the West Virginia State Board of Examiners for Registered Nurses. Miss McKenna also is president of the West Virginia League for Nursing. Prior to coming to West Virginia, Miss McKenna served as Director of Nursing for Barbank Hospital, Fitchburg, Mass., and was 21 former dean of the Baylor University, School of Nursing, Waco, Texas.

The graduates took the first year of the three-year course at Morehead State College. Their final two years of training was at Harlan Memorial Hospital, a key link in the chain of ten hospitals administered by the MMHA for beneficiaries of the United Mine Workers of America Welfare and Retirement Fund.

Members of the class of 1950:

U. S. AND HUNGARY

The State Department thinks the time may be right for resuming full diplomatic relations with Communist Hungary and it is looking to see if they agree. The United States has declined to award a top-ranking diplomat to Budapest since 1956, fighting which resulted any uprising by the Hungarian people and put Premier János Kadar in power. Legally, congressional sanction is not required to restore full diplomatic relations with Hungary.

McBRAYER'S

Weekend Specials

SAVE MONEY on Household Necessities!



PAPER TOWELS and TOILET TISSUE

SPECIAL PURCHASE

Facial quality tissue in four favorite colors

10 ROLLS

88¢

3-Ply Towels, extra absorbent, 100-sheet rolls, 2 ROLLS

37¢

Stainless Steel SILVERWARE

- KNIVES
- FORKS
- TEASPOONS

Values To 49¢

Now **9¢** Each

Birdseye DIAPERS

27" x 27"

Regular \$2.29

\$1.77 Doz.

McBrayer's, Inc.

Morehead — Olive Hill — Flemingsburg — Vanceburg

Special FABRIC SALE

Better Dress Materials From Our Regular Stock

- * Novelty Sport Cottons — Reg. 98¢ To \$1.49
- * Dacron & Cotton Batist Prints — Reg. \$1.49
- * Silk Shake Linens — Reg. \$1.29 To \$1.49
- * Petite Point Piques — Prints & Solids
- * Acetate Tuffeta Prints — Reg. 98¢
- * Dacron Polyester Prints — Reg. \$1.59
- * Silk & Rayon Prints — Reg. \$1.39
- * Woven Novelty Cottons — Reg. \$1.29
- * Magic Grege-Prints — Reg. \$1.39

All 45 Inches Wide

ONE TABLE COTTONS

- ☆ Drip Dry Cottons ☆
- ☆ Cotton Satin Prints ☆
- ☆ Ginghams ☆
- ☆ Novelty Weaves ☆

These Are Fine Cottons — Usually Priced At 79¢ To \$1.29

All 50" Yard

Pure Silk Prints **\$1.98** Yd.

A Complete Line Of Sewing Notions

For One Stop Shopping

Mickey's Fabrics

219 Main St. Morehead, Ky.

Try These Recipes

These are two of the more than 300 recipes appearing in "Our Ways With Food," a 156 page publication of the Morehead Woman's Club. Copies may be ordered, at \$2.50 each (as long as supply lasts) from Miss Pearl Babin, Morehead, Ky. Profits are contributed to St. Claire Hospital. The recipes have been screened, and tested, as the best in the Morehead area over two generations.

SHRIMP GUMBO

| | |
|--------------------|----------------------------------|
| 2 cups shrimp | 1 green pepper |
| 1/2 pint okra | Green onions |
| 1 teaspoon vinegar | Parsley |
| 1 onion (medium) | Worcestershire sauce, 1/2 bottle |
| 1/2 stalk celery | 1 teaspoon Tabasco sauce |
| 1 clove garlic | |

Fry 1/2 pint of cut okra. Add 1 teaspoon vinegar. Make a light roux with 1/2 cup of cooking oil and a little shortening. Add to onions, 5 onions, 1/2 stalk celery, 6 cloves garlic, 1 bell pepper, green and red peppers, all chopped fine. Cook about 10 minutes. Add cooked okra and shrimp. Cook until shrimp turn pink. Salt and Tabasco. Add as much water as desired (crab meat and oysters may be added).

Bonita Laughlin
A Favorite from Louisiana

GERMAN CHOCOLATE CAKE

| | |
|-------------------------------------|------------------------------|
| 1 package sweet cooking chocolate | 2/3 cups sifted cake flour |
| 1 cup boiling water | 1 1/2 baking soda |
| 1/2 cup butter, or other shortening | 1 1/2 salt |
| 2 cups sugar | 1 cup buttermilk |
| 4 eggs yolks, unbeaten | 4 egg whites, stiffly beaten |
| 1/2 teaspoon vanilla | |

Melt chocolate in 1/2 cup boiling water. Cool. Cream butter and sugar until light, fluffy. Add egg yolks, one at a time, beating after each. Sift flour, soda and salt. Add sifted ingredients alternately with buttermilk, beating until batter is smooth. Fold in stiffly beaten egg whites, which have been lined on bottoms with paper. Bake (220°), 35 to 45 min. for round layers, 40 to 45 min. for sq. pans. Cool, then frost.

Coffee Whipped Cream: Combine 2 cups whipping cream, 1/4 cup sugar, 4 t instant coffee, 1/2 vanilla in chilled bowl; not over beat. Garnish with blanched almonds dipped in unsweetened chocolate.

Cocoa-Peanut Frosting: Combine 1 cup evaporated milk, 1 cup sugar, 3 egg yolks, 1/4 lb. butter and 1 1/2 vanilla in a saucepan. Cook over medium heat, 20 to 25 min. constantly, until mixture thickens. Remove from heat. Add about 1/2 cup thin flaked coconut and 1 cup chopped pecans. Beat until cool and of spreading consistency.

Cookbook Committee

Summer Fun Begins With

U.S. KEDS

Or SUMMERETTES

From CHUMLEY'S

All Sizes And Colors For Every Member Of The Family!

For Children

\$2.99 To \$3.99

For Ladies

\$2.99 To \$4.99

CHUMLEY'S SHOE CENTER

"Fitting Shoes Is Our Business"

West Main St. — Morehead

TONIGHT — Fri. & Sat.

Here's Real Entertainment!

TROUBLE WAS NEVER SO MUCH FUN!



TONY CURTIS

40 POUNDS OF TROUBLE

Suzanne Pleshette — Clark Rockefeller

— PAUL SILVERS

PLUS 2nd Big Feature



MYSTERY SUBMARINE

EDWARD JULLO — JAMES HENDERSON JUSTICE

LAURENCE FINE

STARTS SUNDAY —

For 4 Big Days

One For The Entire Family To See ★★

Session On Soil Identification Is Held Here

By Billy K. Benson

A training conference in soil identification was held here Monday and Tuesday for soil scientists of the Soil Conservation Service concerned with the mapping of soils derived from acid sandstone and shale in Eastern Kentucky. Attending were: William Carpenter, state soil scientist; Eddie Huffman, assistant state soil scientist; Joseph H. Windsor, senior soil correlator for Kentucky and Tennessee; and H. P. McDonald, soil specialist at Lexington; John Newton, Richard Taylor, Paris, Victor Vaughn, Irvine; John D. Sims, Hazard; Albert Johnson, Somerset; Thomas Sparks, London; James Stapp, Jamestown; and Paul Lane, Morehead.

Craig Lachar of the U. S. Forest Service and Boyd Patton, state soil scientist for West Virginia, also attended.

Muskingham, the most common soil in the Eastern Kentucky mountains is now being broken down into new soil series. All seven of the new soil series are in Rowan County. They will erode at different rates. Soil conservationists and others using these new soil maps can make more accurate predictions on production of timber, pasture and crops.

U. S. USES FORCE 4th TIME

In a period of six years, Federal forces have been used to cope with racial disorders in the South. President Eisenhower ordered U. S. troops to Little Rock, Ark., when racial riots broke out after school integration. For the third time, the Kennedy Administration has called on Federal troops. On May 20, 1961, troops were dispatched to Montgomery, Ala. following attack on "freedom riders." On September 20, 1962, President Kennedy ordered troops to the University of Mississippi when a Negro enrolled. The latest call sent troops to Birmingham, Alabama.

Butcher, Jackson Calvert Win Meets At Sunnybrook

James Butcher, Esther Jackson and Ricky Calvert were Memorial Day tournament winners at Sunnybrook Golf Course.

Butcher, with a net of 62 and a gross of 80 topped the 18-hole men's tournament. Corky Wilson has a net of 80 gross for second, while Early Frater (90-87) and Joe Greer (87-79) took third and fourth.

Esther Jackson had a net of 37 in the women's nine-hole event. Mabel Reynolds and Becky Ross tied for runner-up honors with 35's.

A net of 73 won a Kickers tournament for Ricky Calvert.

165,000 Kilowatts

KU Doubles Capability Of Plant With Activation Of Generator

The newest and largest electric generator on the Kentucky Utilities Company system, the 165,000 kilowatt No. 2 Unit at the E. W. Brown plant at Dix Dam, went into commercial operation this week.

During the first year of operation for the new unit, the Brown plant will use from 15 to 20 carloads of Kentucky coal a day.

The new generator more than doubles the capability of the Brown plant where the first generator — a 105,000 kw unit — went on the line in 1957. The plant is designed for a total of four units with an ultimate combined capacity of more than a half-million kilowatts.

House Votes Money For Leaf Research Unit At Lexington

The House Appropriation Committee voted Monday to increase from \$210,000 to \$410,000 the appropriation to the National Tobacco Research Center at Lexington, beginning July 1.

It also voted \$200,000 to be used in flue-cured tobacco research in existing facilities in North Carolina, which sought \$3.2 million to construct a tobacco laboratory at Raleigh, N. C.

Rep. William Natcher said in Washington that the committee agreed with him that proposed North Carolina laboratory would "simply duplicate work under way in Kentucky."

The group noted that the Kentucky Legislature appropriated \$1 million in 1960 for construction of the center and asked only \$20,000 in federal funds to start the University of Kentucky-related laboratory, Natcher said.

He said that North Carolina Gov. Terry Sanford made it clear to the committee that his state would not contribute to construction of the laboratory in his state.

Natcher said the committee "realizes that flue-cured tobacco is in serious trouble today" but the funds for its study were voted only after the Kentucky center's appropriation had been increased.

Progress will come to an end when children agree with the views of their parents.

Because of its size and its design, which incorporates the latest technical advances, the new generating unit is the most efficient in the K. U. system. The Brown plant's location at Dix Dam on Herrington Lake is at the hub of the company's statewide transmission network.

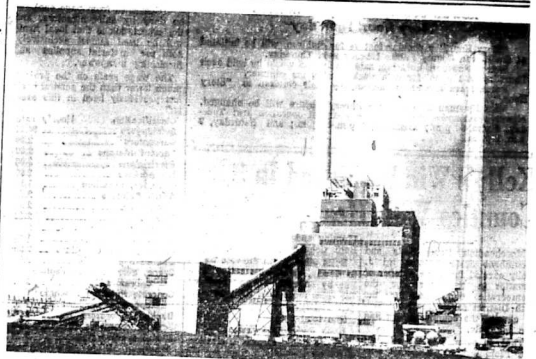
The company's other coal-fired steam-electric plants are the Green River station, near Central City, with 247,000 kw capacity; the Tyrone plant in Woodford

County, with 122,000 kw; and the Pineville plant with 67,000 kw. The company also has two hydro-electric stations: Dix Dam, with 30,000 kw and Lock 7 on the Kentucky River with 2,000 kw.

The new addition cost \$15,370,000 and brings the total expenditures for the Brown plant to more than \$30,000,000. The plant was named for the late E. W. Brown, vice president and chief engineer of K. U.

The plant draws water from Herrington Lake, but has no appreciable effect on the lake level or temperature. This is because the vast quantities of cooling water flow and only the small amount required to make up for that lost through evaporation is drawn from the lake.

K. U.'s resident engineer on both units at the Brown plant was Willis E. Wise. John Sparrow is superintendent of Brown plant and the Dix Dam hydra station.



DOUBLES CAPACITY — The second electric generating unit at Kentucky Utilities' E. W. Brown plant went into operation this week, raising the plant's capability to 270,000 kilowatts. The addition from the coal pile, located on the east side of the plant. Some 35,000 tons of Kentucky coal, enough to supply the plant about 40 days, will be kept on hand here.

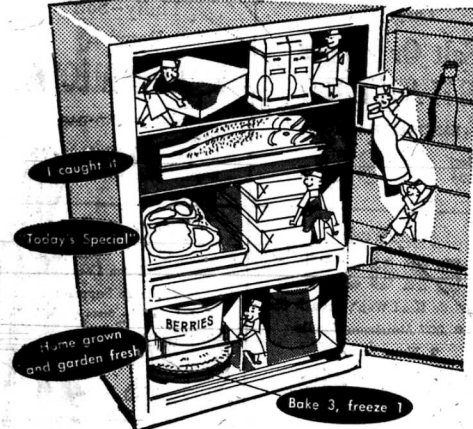
ALLIE YOUNG WISHES TO THANK HIS FRIENDS IN ROWAN COUNTY...

Sincere thanks to everyone who voted for me and to all of those who worked in my behalf during the primary election.

I appreciate your help and friendship, and look forward to the task ahead. Your confidence I value highly — I shall keep the faith.

Again many thanks.

ALLIE YOUNG



you'll enjoy the conveniences of a modern electric refrigerator-freezer

Today's electric refrigerator-freezers keep almost anything fresh — from tonight's dinner to last night's dinner whose leftovers can be kept frozen until the family has forgotten.

Meal planning's a cinch when there's a freezer full to choose from. And no daily "last minute" trips to the store.

Today's models hold far more. That means bigger savings with careful buying. And you can serve out-of-season foods at in-season prices.

See these new, larger, frost-free refrigerator-freezers for yourself. Your dealer can show them to you.

RE-WIRE NOW AND SAVE!

We will pay you \$35, if you change from 2-wire to 3-wire, 100 ampere service and install any one of the following appliances:

- 240 Volt Range
- Dryer
- Air Conditioner
- Water Heater
- 120 Volt Freezer
- Refrigerator-Freezer

Offer good until August 31, 1963. See our local manager before re-wiring.

now it's Pepsi for those who think young



Parents have as much fun as youngsters today...and, naturally, fun includes Pepsi! Light, bracing Pepsi-Cola matches your modern activities with a sparkling-clean taste that's never too sugary or sweet. Nothing drenches your thirst like a cold, inviting Pepsi. Think young—say "Pepsi, please!"



KU SYMBOL OF SERVICE

KENTUCKY UTILITIES COMPANY

an investor-owned electric company

GO FIRST CLASS ELECTRICALLY

CLEAN COOKING

FAST WATER HEATING

FRUITLESS GARDEN SPRINKLING

THRIFTY HEATING

FOOD PRESERVATION

LIGHT FOR LIVING

Rowan County Library To Initiate 'Story Hour' Thursday

"Story Hour," a popular feature for children, will be initiated at the Rowan County Public Library next Thursday. Sharon Newman, librarian, said the session would be held each Thursday at 1 p. m. for eight weeks during the summer. Parents are invited to accompany their children to "Story Hour." Miss Newman also said the library's hours will be changed, effective tomorrow (Friday). New hours of operation are: Tuesday, 2 p. m.-6 p. m.; Thursday, 1 p. m.-5 p. m.; and Saturday, 9 a. m.-1 p. m.

Kelly's Win Fashioned In 3 Counties With Heaviest Vote

Moreheadian Bruce Botts and incumbent State Senator Ed J. Kelly carried the same number of counties in their race for the Democratic nomination for the 27th District seat, but Kelly carried the counties which had the big vote.

That, in essence is the story of the Flemingsburg senator's successful defense of his seat by a margin of 820 votes in the six county district.

Kelly racked up wide margins in Fleming and Mason Counties and narrowly edged by Botts in Bath. At the same time, Botts was taking top-heavy pluralities in Rowan, Morgan and Menifee Counties, but the vote in those three was smaller.

Kelly grabbed a majority of 1979 votes in Mason County, received 1436 more than Botts in

Completion Set—

(Continued from page one) be done by sub-contractors, and the expectation is that local firms will be used almost exclusively, both for material supplies and furnishing manpower.

The wage scale on the project, much lower than the general scale, has previously been in this area.

| Classification | Hourly rate |
|---------------------------------------|-------------|
| Bricklayers | \$4.25 |
| Carpenters | \$4.00 |
| Cement Masons | 2.00 |
| Electricians | 2.00 |
| Ironworkers | 2.00 |
| Unskilled labor | 2.00 |
| Brush Painters | 1.15 |
| Plumbers | 2.55 |
| Roofers | 2.55 |
| Sheet Metal Workers | 2.55 |
| Truck drivers, light | 1.20 |
| Blade grader operators | 2.00 |
| Bulldozer operators | 2.00 |
| Crane, derrick and dragline operators | 2.00 |
| Concrete finishing machine operators | 2.00 |
| Backhoe operators | 2.25 |
| Scrapers operators | 2.00 |
| Shovel operators | 2.25 |

Some of these classifications will not be needed on this housing project, but most will be. In addition to the 30 residence units, an administration building, rectory's office, maintenance space, etc., will be constructed on the 6.5 acre site near the Morehead Grade School.

Wm. Stevens—

(Continued from page one) o'clock in the Limestone Pentecostal Church in Carter County. Rev. Jack Boggs and Rev. Milt Haywood will officiate.

Burial is to be in Clay Cemetery in Carter County. Nephews will serve as pallbearers. Lane Funeral Home is caring for the arrangements.

Khrushchev expects intellectuals to howl to line. U. S. disappointed by Vietnamese forces.

Capt. Glenn C. Dean Assigned to Vietnam

Army Capt. Glenn C. Dean, whose wife, Norma, lives at 106 Bishop Ave., Morehead, was assigned to the Army element of the Military Assistance Advisory Group (MAAG) in Vietnam, May 22, as a signal officer.

MAAG, Vietnam, is an Army-Navy-Marine-Air Force organization which advises the armed forces of the Republic of Vietnam on training, use of equipment and tactical operations.

The captain entered the Army in July 1948 and arrived overseas on this tour of duty in May 1962.

Captain Dean, son of Mr. and Mrs. James A. Dean Route 2, Morehead, is a 1956 graduate of Morehead High School.

Cranston Man—

(Continued from page one) sey and Ernie T. Kelsey, all of Morehead; David Edward Kelsey, Batavia, O.; Mrs. Addie Fisher, Carlisle, Ky.; Mrs. Pauline Brown, Morehead; and Mrs. Irene Barker, Mansfield, O.

Four brothers and sisters also survive. They are Willie Kelsey and Walter Kelsey, both of Morehead, Mrs. Sadie Myhner, Clearfield, and Mrs. Leta Caudill, Cranston.

Funeral services were held Thursday at 2 p. m. in Cranston Church of God. Rev. Ernest Flasher and Rev. John Thornberry officiated.

Burial was in Cranston Cemetery. Stucky Funeral Home cared for the arrangements.

Clearfield Soldier Completes 'Basic'

Army Pvt. Delbert O. Lewis, son of Mr. and Mrs. Talmadge R. Lewis, who live at Clearfield, completed eight weeks of advanced armor training at Fort Knox, May 18.

Lewis received instruction in the duties and responsibilities of the driver, gunner, loader and tank commander.

The 19-year-old soldier entered the Army in January of this year and completed basic training at Fort Jackson, S. C.

He is a 1962 graduate of Rowan County High School. An unsuccessful organizer is one unable to get other people to do

THANKS . . .

to the many Rowan Countians who gave me their support in so many ways in my race for State Senator.

The vote which I received here at home was gratifying to me and I appreciate it more than I can say.

BRUCE BOTTS

PIERCE'S 5¢ & 10¢ STORE FIRST . . .

MAMMOTH BIG 7 SALE

— SALE STARTS THURSDAY —

| | | | |
|--|---|---|---|
| <h3 style="text-align: center;">CHAISE LOUNGE</h3> <p style="text-align: center;">Extra strong webbing — Full 1" Aluminum Tubing, Double arm rests.</p> <p style="text-align: center;">Terrific Value!</p> <p style="text-align: center;">Reg. \$11.95</p> <h2 style="text-align: center;">\$6.87</h2> | <h3 style="text-align: center;">Round-Willow LAUNDRY BASKET</h3> <p style="text-align: center;">Use for Laundry, Toys, Yard, Garage. 14 1/2" deep.</p> <p style="text-align: center;">Reg. \$1.98</p> <h2 style="text-align: center;">\$1.33</h2> <p style="text-align: center;">White They Last</p> | <h3 style="text-align: center;">50-Ft. Green Plastic GARDEN HOSE</h3> <p style="text-align: center;">Famous Colortite Brand — Advertised In Life. Unconditionally guaranteed for 5 years. 3/4" size with brass fittings.</p> <p style="text-align: center;">Scoop</p> <h2 style="text-align: center;">77¢</h2> | |
| <h3 style="text-align: center;">Hershey 1-Lb. Can CHOCOLATE SYRUP</h3> <p style="text-align: center;">LIMIT 3 CANS</p> <p style="text-align: center;">Low, Low Price</p> <h2 style="text-align: center;">17¢</h2> <p style="text-align: center;">Can</p> | <h3 style="text-align: center;">Suprtherm ICE CHEST</h3> <ul style="list-style-type: none"> • Extra Light Weight • It Floats • 17-Qt. Size • Keeps Ice 48 Hours <p style="text-align: center;">Reg. \$1.74</p> <h2 style="text-align: center;">\$1.14</h2> | <h3 style="text-align: center;">Redwood TRELLIS</h3> <p style="text-align: center;">4 feet high — 4 feet wide. DRESS UP THAT GARDEN, FENCE</p> <p style="text-align: center;">Super Value</p> <h2 style="text-align: center;">87¢</h2> | |
| <h3 style="text-align: center;">Folding PATIO TABLE</h3> <p style="text-align: center;">Full 18" Steel Top, Copper Bronze Vinyl Coated Tubing.</p> <p style="text-align: center;">Reg. \$1.98</p> <h2 style="text-align: center;">\$1.27</h2> | <h3 style="text-align: center;">Large Size Salt Or Pepper SHAKERS</h3> <p style="text-align: center;">SANITARY FLIP TOP</p> <p style="text-align: center;">Reg. 49¢</p> <h2 style="text-align: center;">31¢</h2> <p style="text-align: center;">Ea.</p> | <h3 style="text-align: center;">Fluffy-Soft Dounmak MARSHMALLOWS</h3> <p style="text-align: center;">FULL POUND BAG</p> <p style="text-align: center;">Delicious Buy</p> <h2 style="text-align: center;">23¢</h2> <p style="text-align: center;">Lb. Bag</p> | |
| <h3 style="text-align: center;">TRUCK LOAD SALE</h3> <p style="text-align: center;">Matching Summer NECKLACES And EARRINGS</p> <p style="text-align: center;">Rep. \$1.98 Set</p> <p style="text-align: center;">Double Dividend Savings</p> <h2 style="text-align: center;">97¢</h2> <p style="text-align: center;">Set</p> | <h3 style="text-align: center;">Girls' And Ladies' Jamaica SHORTS</h3> <p style="text-align: center;">Ladies' Sizes 10-18</p> <p style="text-align: center;">Girls' Sizes 7-14</p> <p style="text-align: center;">Pair</p> <h2 style="text-align: center;">97¢</h2> | <h3 style="text-align: center;">Car Wash BRUSH</h3> <ul style="list-style-type: none"> • Bristle Head Won't Scratch Car • 30" Aluminum Handle • Water Shut-Off <p style="text-align: center;">Reg. \$1.47</p> <h2 style="text-align: center;">87¢</h2> | |
| <h3 style="text-align: center;">Ladies' Sleeveless BLOUSES</h3> <p style="text-align: center;">Solids And Prints</p> <p style="text-align: center;">Sizes 30-38</p> <p style="text-align: center;">Terrific Value</p> <h2 style="text-align: center;">97¢</h2> <p style="text-align: center;">Each</p> | <h3 style="text-align: center;">Boys' And Girls' CREW SOCKS</h3> <p style="text-align: center;">Sizes 6 to 10 1/2</p> <p style="text-align: center;">Terrific Value</p> <h2 style="text-align: center;">33¢</h2> <p style="text-align: center;">Pr.</p> <h2 style="text-align: center;">2 Prs. 64¢</h2> | <h3 style="text-align: center;">Supertherm Vacuuel JUG</h3> <p style="text-align: center;">Gallon Size</p> <p style="text-align: center;">Pour Spout — Won't Rust — Light Weight</p> <p style="text-align: center;">Keeps liquids cold 12 hours.</p> <p style="text-align: center;">Compare Reg. \$2.49</p> <h2 style="text-align: center;">\$1.58</h2> | |
| <h3 style="text-align: center;">Plastic Freezer Containers</h3> <p style="text-align: center;">— Pint Size — 7¢ Ea. 4 For 27¢</p> <p style="text-align: center;">— 1/2-Pint Size — 11¢ Ea. 3 For 31¢</p> <p style="text-align: center;">— Quart Size — 17¢ Ea. 2 For 27¢</p> | | | <h3 style="text-align: center;">CAR SEAT</h3> <ul style="list-style-type: none"> • Extra Cool • Plastic Supports <p style="text-align: center;">Red — Blue — Green — Black</p> <p style="text-align: center;">Reg. \$1.98</p> <h2 style="text-align: center;">\$1.27</h2> |

MCCULLOCH SPEED-TIP BAR • Get faster, and smoother cutting plus longer chain life with this new lightweight anti-friction bar.

- Roller bearing tip reduces friction
- Delivers more power to chain
- Narrow bar reduces binding
- Durable one-piece construction

MONARCH Supply Store
MOREHEAD, KENTUCKY

Winn Won Both The Judge Nominations

Circuit Judge John J. Winn took both the Democratic and Republican nomination for the 27th Judicial District's top post in last week's primary election.

Winn, who has served more than 16 years on the bench, was nominated by Democrats from the Rowan-Bath-Menifee-Montgomery district by a majority of 3612 votes, while Republicans gave the Mt. Sterling jurist their nomination by 35 votes.

Winn's opponent, James E. Clay of Morehead, carried Rowan and Menifee Counties, while Winn was pulling up a large margin in populous Montgomery County and winning in Bath comfortably. The total vote was: Winn 5545, Clay 3637 (Democrat); and Winn

| County | Democrat | Winn | Clay |
|------------|----------|------|------|
| Rowan | 766 | 1359 | 1399 |
| Bath | 1793 | 969 | 771 |
| Menifee | 459 | 236 | 168 |
| Montgomery | 2536 | 26 | 768 |
| TOTAL | 5545 | 2837 | 4225 |

| County | Republican | Winn | Clay |
|------------|------------|------|------|
| Rowan | 254 | 422 | 26 |
| Bath | 41 | 24 | 24 |
| Menifee | 33 | 24 | 24 |
| Montgomery | 122 | 43 | 515 |
| TOTAL | 550 | 515 | 415 |

NO NEED TO SUFFER this SUMMER!

There's a General Electric Thinline to solve EVERY Air Conditioning Problem!

A FULL RANGE OF CAPACITIES

- 4,000 BTU to 22,500 BTU
- Installation Flexibility — A Model to fit Most Windows, Most Wiring Conditions!
- Ask about the New GE Porto-Cart.
- 5-Year Written Protection Plan
- 1-Year Parts and Service on entire Air Conditioner, plus 4 years on Serial Refrigeration System.

GE Room Air-Conditioners

As Low As \$149.95

Meadows & Crager
Main Street Phone ST 4-5096 Morehead

PIERCE'S

5¢ & 10¢ STORE

349 E. Main St. Morehead

Tommy Kirk, Now 21, To Trade Teenage Troubles For Others

Tommy Kirk, the image of justified youth in Walt Disney pictures, is getting ready to trade his teenager's troubles for adolescent problems.

Young Kirk, a stringy haired lad with talent, has appeared in 12 Disney films since 1958, a record that many stars in Hollywood can't boast.

Tommy has become a mainstay on Walt's Burbank production lot.

He's been there since 1958, always available whenever Disney needed an actor to portray the fables of modern youth.

Now, Kirk is getting older, almost to the point where he's outgrowing his roles. Tommy's 21, having been the captive of Hollywood movie and television studios for the past 13 years.

Kirk started acting when he was 10 years old. And unlike many juvenile performers, he reached

the age of maturity without suffering any of the real life troubles usually associated with moppet his personal life is unmarked by any headline-making scandals, nil. In Hollywood young actors don't always get off so easily.

Kirk says he's dedicated to the acting profession, and is critical of those young actors in Hollywood who aren't.

"I'm in this business for life. It kind of hit me recently that I

"I see so many contemporaries of mine acting like they're 17," Tommy said, ducking the squirts.

This United Press International story appeared in newspapers all over the country last week. Tommy Kirk, one of the country's top young actors, is the son of the former Lury Day of Morehead. He had planned a visit to Morehead earlier this spring, but a change in his schedule forced cancellation of the trip.

Tommy has been drawing a paycheck for years, investing money in securities and buying two houses, one for himself over-looking Hollywood.

His ambition is to eventually become an actor more versatile than the type of performer re-

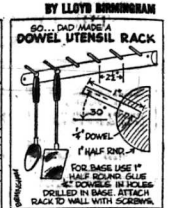
quired to play a youngster who confounds parents.

"Enough people, whose opinion I respect, have told me I've always been a capable actor," he said. "I want to be a great actor."

Gov. Bert Combs addressed the 1962 graduating class of the Kentucky School for the Deaf, Danville, the first time in the 140-year history of the State school for deaf children that the Governor has addressed the graduating class. Twenty-four youngsters were in the graduating class.

Governor Talks To Deaf Graduates

Gov. Bert Combs addressed the 1962 graduating class of the Kentucky School for the Deaf, Danville, the first time in the 140-year history of the State school for deaf children that the Governor has addressed the graduating class. Twenty-four youngsters were in the graduating class.

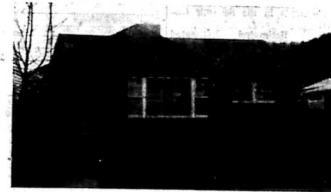


ARE YOU LOOKING FOR A HOME, BUILDING LOT, BUSINESS OR A FARM? IF YOU ARE, CONTACT

Alpha Hutchinson Real Estate Agency



3 BEDROOM BRICK, garage attached, in Alfrey Heights Subdivision. Nice kitchen, built-in cabinets, double sliding door from dining area to patio at back of house. Real nice and a good buy at \$13,000.00.



NICE 2-BEDROOM BRICK with fireplace. Built-in kitchen cabinets, central heating system, ceramic tile bath, ceramic tile wainscoting in kitchen, 1 car concrete block garage with half bath. Located on good corner lot in one of the choice subdivisions in Morehead. Priced at only \$14,500.00.



1 1/2-STORY FRAME DWELLING, 7 rooms, 1 1/2 baths, 4 bedrooms, gas radiators, all utilities. Corner Branham and Railroad Street. Can assume a V.A. guaranteed loan of approximately \$4,000.00 payable \$66.00 per month including taxes and insurance.

2 FRAME HOUSES WITH BATHS AND 30 ACRES LAND, in Tulliver Addition to Morehead, Ky. Four-room house and 1 1/2-acre house. BOTH REATED. Good investment. Best use and live in the other. BOTH FOR A TOTAL OF \$11,500.00.

REAL NICE BRICK OUTSIDE CITY LIMITS OF MOREHEAD. Good big lot 125 feet front and 150 feet deep. 3 bedrooms, birch trim and birch doors. 1 bedroom is birch paneled, plenty of built-in cabinets. 2 in. kitchen. Utility room covered back porch-patio, fireplace, family room, plenty of TV and phone outlets in house. Carpet in living room, dining room and hall. Vent fan in hall. Real nice at \$29,000.00.

3-BEDROOM FRAME DWELLING, nice built-in kitchen cabinets. House has kitchen, living room and extra kitchen of utility porch. Good cellar, 2 wells, one drilled and one dug. Storm windows and doors. Ceramic tile and wall in bath. Good big lot fronting on highway approximately 171 feet. Priced at only \$11,000.00.

BRICK VENEER, 3 bedrooms, 2 baths, kitchen, dining room, living room, den, utility room with garage attached and carpeted. Drywall central heat, fireplace — beautiful built-in kitchen. On 62 acre farm, fully fenced. Located approximately 7 miles North of Morehead, just off State Highway No. 32. Priced at \$36,000.00.

BRAND NEW BRICK DWELLING on good lot in Alfrey Subdivision to Morehead. 3 Bedrooms, kitchen, living room and bath — garage attached. This house can be finished to your liking. Priced at \$13,000.00.

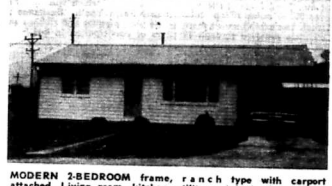
BRAND NEW BRICK DWELLING NOW UNDER CONSTRUCTION. 3 bedrooms, living room, kitchen built-in and dining area. Utility room off carpet. Ceramic tile and wall in bath. Located on good lot fronting 100 feet and 200 feet in depth in Green Valley Acres Subdivision. Priced at only \$13,800.00.



NEW BRICK, just being completed, 3 bedrooms, living and dining, kitchen, 2 baths — one with tub and one with shower and off master bedroom. Central heat, built-in kitchen, oven and range top along with beautiful built-in cabinets. Located on good big lot fronting approximately 140 feet on Ostry Branch Road just outside the City of Morehead. Priced at \$18,500.00.



5-BEDROOM DWELLING, FULL BASEMENT located on a good big lot fronting approximately 95 feet on Second Street. Within one block of Morehead College, Wall-to-wall carpeting on all downstairs rooms except kitchen and bath. Two bedrooms down and three up. Basement has tile on floor. Good rooms down as well as kitchen and living room. Living large dining room as well as kitchen enclosed. Detached one-car garage. This property is well landscaped with plenty of trees, shrubs and flowers. If interested in one of Morehead's better homes, don't overlook this. Must be seen to be appreciated. One of best landscaped lots in town.



MODERN 2-BEDROOM frame, ranch type with carpet attached. Living room, kitchen, utility and bath. Good lot 75 feet by 80 feet. Good drilled well, natural gas well on lot. Located near Farmers in U.S. 60 Cor'r. Priced at only \$8,000.00.

BUSINESS PROPERTY

811 WEST MAIN STREET, 75 feet fronting on Main Street and approximately 300 feet deep. Has 6 trailer-spaces neatly to street spaces. 2 Buildings — which have 4 apartments. Income on this property \$310.00 monthly, can be increased easily. Priced at only \$27,500.00.

GOOD BUSINESS LOT fronting 100 feet on U.S. 60 and K.Y. 32. With good depth. Located east of Morehead less than a mile and priced at \$8,000.

2-APARTMENT HOUSE, frame, 1 apartment consists of 4 rooms and 1 apartment of 3 rooms. Bath in each, both fully furnished on being sold that way. Lot size 50 feet front on Main Street and extending back a distance of 125 feet approximately. 2 New refrigerators in the apartments. Apartments have been renting for \$95.00 per month, plus utilities. Priced for quick sale at \$9,500.00.

BUSINESS & APARTMENT BUILDING on good lot near College Power Plant. Three apartments over two store rooms which are 24-50 ft., one cabin one heater trailer. Income potential \$342 per month. Priced for quick sale at \$28,000. Don't sit and look at this — ACT!

STORE BUILDING with 3 rooms living quarters located near Open Park on Christy Creek. Good blacktop road. Store room and warehouse room. Approximately 1 acre of ground. Priced for quick sale at \$4,000.00.

FARMS

NICE LITTLE 12-ACRE-FARM just out of Clearfield on Dark Hollow. 5-Room frame dwelling, 2 bedrooms, living room, kitchen and utility room. Also, chicken house, smoke house and good cellar. Pitcher pump in the house with a good dug well for water. Priced at only \$5,750.00.

OVER 200 ACRES in all. One of the best farms in Rowan County. More than 100 acres in good grass, two barns, good frame dwelling. Has good tobacco base. This farm is priced at \$25,000 and must be inspected to be fully appreciated.

147 ACRE FARM located on Moore Flat between Sharkey and Farmers. 68 acre tobacco base, good fencing, 5-room frame dwelling, with bath and utility room. 50 ton silo, 2 ponds. Priced at \$18,000.00. You can make down payment and assume V.A. loan payable monthly.

715 ACRES LAND with approximately 3 acres cleared. Four-room frame dwelling with hall and a bathroom without fixtures. Located in North Fork section. Priced at only \$5,500.

BUILDING LOTS

LOCATED APPROXIMATELY 3 MILES WEST ON U.S. HIGHWAY NO. 60 fronting on the highway 162 feet and running back a distance of approximately 600 feet. Between two beautiful homes priced at only \$5,000.00.

HOMES

ONE OF MOREHEAD'S better homes. 3 Bedrooms, 3 baths den, brick and tile construction. Covered and enclosed breezeway and attached garage. 2 Fireplaces. Large patio. Well landscaped. Shown by appointment only.

3-BEDROOM FRAME, frame dwelling on 4 acres of land just off C.C.C. Trail close to clay mines and Rowan County quarry. Hot and cold water, bath, built-in kitchen cabinets, small pond on place. Priced at \$7,000.00.

20-ACRE TRACT of land at Clearfield, Kentucky, fronting approximately 22 feet on blacktop road. 7-Room frame dwelling with bath; good 30 x 32 barn, 1 car garage, smoke house and chicken land near Morehead, don't overlook this. If you want a little land near Morehead, don't overlook this.

PRACTICALLY NEW 2-BEDROOM frame dwelling, living room, kitchen and dining room and bath. Hardwood floors, built-in sink and water heater. Sheetrock and papered. Insulated wall floor furnace for gas heat. On lot 45 feet fronting in Thomas and dining room, living room, bath, full basement. Plenty of good water. Central heating system. Good small pond on place. Priced at \$15,000.00.

SALT LICK PROPERTY—1 1/2 acres land, 5-room frame dwelling, large barn, also a 2-room cottage. Good frontage on U.S. Highway No. 60 across from Mack Ferry Pike intersection with U.S. 60. Priced for quick sale at \$3,500.00.

4 ROOM FRAME, 1 1/2 story dwelling located on Route 2, approx. 17 miles north of city limits of Morehead on Vanceburg Road. Fronting approximately 500 feet on blacktop road. Priced for quick sale at \$5,000.00.

1 1/2-STORY FRAME DWELLING, 4 rooms, and bath with basement — utility room and garage in basement. Good big lot located on Mill Branch Road at Clearfield, Kentucky. Priced at \$9,500.00. Lot is approximately 20 acres, mostly hill land.

Plenty Of Other Main Street Property For Sale And Other Houses That I Am Not At Liberty To Advertise.

— SEE —

ALPHA HUTCHINSON

REAL ESTATE AGENCY

Licensed and Bonded Real Estate Broker
Authorized Mortgage Loan Broker
The Prudential Insurance Company of America

MOREHEAD, KY.

Plenty of other dwellings, farms and business properties in and around Morehead and Rowan County.

See Mr. Hutchinson about GI, FHA and Conventional Loans. No down payment GI loans, small down payment FHA loans. Long terms. Anybody can own their own home. Inquire today.



1 1/2-STORY FRAME DWELLING, full basement and garage detached. Living room, dining room, entrance hall, 3 bedrooms, 1 1/2 baths, 11 closets. Recreation room and utility in basement. Good big lot fronting on Fifth Street 100 feet. Priced at only \$23,500.00.



ALMOST NEW 4-BEDROOM FRAME DWELLING located on approximately 7 to 8 acres of land on the Dry Creek Road approximately 3 1/2 miles from Clearfield. Large kitchen and dining room, living room, bath, full basement. Plenty of good water. Central heating system. Good small pond on place. Priced at \$15,000.00.



2 BEDROOM FRAME, living room, kitchen and bath on good lot right in the heart of Morehead at 133 Lyons Avenue. Small basement room for storage. Priced at only \$8,500.00.



BEDFORD STONE, full basement, in Alfrey Heights Subdivision. Central heat, 3 bedrooms, bath, garage in basement. Built-in kitchen cabinets. Real nice and ready for someone at only \$15,500.00.

THE CHURCH OF CHRIST

Meets at
225 Second Street
Morehead, Kentucky

Sunday School 11:00 A.M.
Sunday Worship 11:30 A.M.
Sunday Evening 7:00 P.M.
Wednesday Evening 7:00 P.M.

DON FLATT, Minister

Hear "The Voice of Truth" over WMBR each Wed.—7:15 a.m.

Won't you
come out
and
play?



Stylish for fun in the sun, these shoes are wonderful for youngsters who play!

U.S. Keds

For The Kiddies And Adults Too.

Priced From \$1.98

MARTIN'S
Dept. Store

Main Street Morehead

SUNSHINE PLASH — Smoky Valley Lake is a favorite summertime attraction to vacationers at Carter Caves State Park. Located in northeast Kentucky four miles off U. S. Highway 40 near Olive Hill, the park offers a full variety in accommodations and recreational opportunities. A highlight in the park is the construction of a new 28-room lodge with a 200-seat dining room. For explorers there are several interesting caves in the park, three of which have new lighting systems and guided tours. The 1,000-acre park also has housekeeping cottages, a new golf course, group camp, modern tent and trailer service building, paddle boats, horseback riding, picnic area, playground, and a program of supervised recreation.

1½ Million in June

Superstitions, Myths Grow Up Around Wedding Ceremonies

There'll be about 1½ million weddings in the United States this year and, as usual, June is the most popular month for the altar-bound.

Why June has become the traditional month of weddings and roses probably relates to the transportation difficulties in early America — too much snow in the winter to get to a wedding celebration. Spring and fall were bad times, too, because folks were busy with planting or harvesting.

Another influencing factor may have been that June is named after the Roman goddess, "Juno." The Greeks had a different name for this dame — "Hera." Anyway, the point is that Juno (or Hera) was the goddess of womanhood, of marriage and of maternity. She was usually represented as a matronly type, but nonetheless beautiful. The peacock, the cuckoo and the pomegranate were sacred to her. Homer spoke of her as the

Since the sun was a god in many early societies, it was a belief that if a bride-to-be gazed on the sun she would be certain to have children. This may explain the old saying, "Happy is the bride the sun shines on."

Even though her wedding day is her happiest day, the bride "supposed" to cry, symbolizing the brides of olden times captured by force. The capture is also reflected in the custom of the groom carrying the bride over the threshold of their new home.

Centuries ago in France the bride threw her garter and the girl who caught it was believed to be the next bride. Today the bride throws her bouquet — but the bridemaids still scramble to make the catch.

In ancient times, according to Compton's, the date of the wedding was often chosen at some phase of the moon when the gods were presumed to be favorable. This, combined with the custom of eating honey at the marriage feast, may be the origin of the word "white-armed goddess" and the "ox-eyed queen" — all of which adds up to the kind of deity every prospective bride ought to have on her side.

These and many other interesting observations about the origins of wedding customs are culled from Compton's Pictured Encyclopedia. Here are some more.

For instance, the engagement ring represents the very old custom of a gift to a girl desiring marriage. The diamond ring originated in Italy where the diamond was believed to be a "stone of love." In ancient Egypt, the ring was a symbol of eternity. It also symbolized the "eternity" of the bride whose hands were tied to prevent her from escaping. Anglo-Saxons wore the ring on the right hand until the wedding when it was transferred to the left.

Another custom credited to ancient Egypt is throwing old shoes or tying them to the bridal car. In the land of the pyramids, the father handed the bride's sash to the groom, symbolizing a transfer of authority.

Mohammedans, back in the middle ages, used orange blossoms in their ceremonies, as the orange was their most prolific fruit. Today orange blossoms symbolize the hope that the wedded couple will be blessed with children. Throwing rice carries the same wish — but in ancient times it was also a way to "protect" the marriage from evil gods.

Sometimes the marriage ceremony involved guarantees. The veil over the bride's face may have indicated that she had been secluded from men, and her white robe was a warrant of her purity. Even now it is thought bad luck for the groom to see the bride before the ceremony on their wedding day.

Another widespread custom is for the bride to wear "something old, something new, something borrowed, and something blue." In ancient Israel, the bride's robe had a blue border signifying purity, fidelity and love.

High-caste Brahmans in India believe a girl should marry at puberty. Usually the child bride remains with her family until she is 15 or 16. Marriage celebrations in India are so elaborate, Compton's points out that "the expense of the affair and of the bride's dowry frequently drives the father to the moneylender." Many American fathers can testify that this turn of events is not exclusive with India.

Japanese tradition requires the bride to wear a veil over her elaborate hairdo called a "horn coverer." Jealousy is thought to vanish when it is removed,

Special Call Seen By Combs On Poll Tax

Gov. Bert Combs said Saturday there is a "good possibility" he will ask a special session of the General Assembly to approve an amendment to the U. S. Constitution banning the poll tax.

The session, expected to be called for late this month, will be to deal with the problem of the Eastern Kentucky miners' hospitals.

In order for an amendment to become part of the basic law of the country, it must be approved by three-fourths of the state legislatures.

Kentucky, with the special session coming up, finds itself in what would be a key position on the amendment.

"It is just possible," the governor said, "that Kentucky could be the state to trigger the ratification."

With 50 states in the union, the magic number for ratification is 38. So far, 24 legislatures have acted in favor of the amendment.

Four others — Texas, Maine, Oklahoma and New Hampshire — are expected to approve the amendment. In fact, in Texas the bill already has passed one house.

It is the governor's hope that two states in addition to Texas will act quickly. If that happens, Kentucky could gain the distinction of being the state that tips the scales and makes the anti-poll tax amendment part of the Constitution.

"We have had several discussions on the amendment," the governor said, "I think there is a good possibility I will amend the call to include it."

Elliotville Seaman Aboard A New Ship

Denzil R. Crum, seaman, USN, son of Mr. and Mrs. Len Crum of Elliotville, is serving aboard the command ship USS Wright which was commissioned May 11 at the Puget Sound Naval Shipyard, Bremerton, Wash.

The Wright is equipped with world-wide communication capabilities and is a new naval concept and the Navy's newest addition to the fleet. She operates out of Puget Sound as a Pacific Fleet unit.

Take the WORRY out of moving!

Call **BLAIR TRANSFER AND STORAGE** PHONE STATE 4-0963 Complete Local and Long Distance Moving Service... Packing, Crating, Storage... **GREYHOUND VAN LINES**

613 W. Main, Morehead, Ky.

'New Look' Given Blue Licks State Park In Nicholas County

The "new look" in the presentation of the story of Kentucky's historic Blue Licks area at Blue Licks Battlefield State Park, along with numerous other improvements at the park, have been formally dedicated in ceremonies at the park museum.

Parks Department Commissioner Edward V. Fox said the new museum exhibits, the new swimming pool and bathhouse, the new picnic area and shelters and new hiking trails for the Daniel Boone tour are part of the State's \$19.9 million park expansion and improvement program launched in 1961.

Speakers at the dedication were State Parks Board Chairman Henry Ward and Commissioner Fox. The master of ceremonies was G. T. Harding of Mt. Olivet. The park is near Mt. Olivet, midway between Paris and Maysville.

The museum's new exhibits illustrate the history of the Blue Licks area from the days when the saline waters attracted the now-extinct mastodon and other animals, through the Revolutionary War and pioneer periods, and on to the mid-1800's when Blue Licks became a famed resort area.

An illuminated diorama, sealed to the actual topography of the park, shows the area as it appeared at the time of the Battle of Blue Licks, August 19, 1782, the

last battle of the American Revolution. Other displays trace routes taken by Daniel Boone, Simon Kenton and other pioneers to reach the salt licks.

Narrative sketches fit the story together. They relate the significance of Blue Licks to the Indian and pioneer weapons and tools, an iron salt kettle that belonged to Boone, and a painting of the 1782 Battle of Blue Licks between pioneers and Indians.

Also on exhibit at the museum

are a gun collection, a small model of a hotel from the resort era, a huge sketch of the head of a mastodon, battle relics uncovered after the Battle of Blue Licks and a pioneer room complete with furnishings and utensils. But all the interest at the park is not confined to the indoors. Near the museum are buffalo trails and a cemetery where Revolutionary War dead from the Battle of Blue Licks are buried.

BE OUR GUEST!
Clip this Coupon and be the GUEST of
MOREHEAD NEWS
AT THE
1963 LEXINGTON TROTS
NIGHT HARNESS RACING
GOOD JUNE 6-7-8
Post Time 8:15 p.m. * Free Admission
* Racing Rain or Shine * Tax Exempt

LOOK! ANOTHER GREAT NEW SEALTEST TREAT!

MR. COOL

Sealtest ICE CREAM

CHOCO CHERRY BAR

Mr. Cool says: "Kids—you'll find! The new Sealtest treat is cherry-rich inside with a crunchy choco-chip coating. What a cool combination! Sealtest wholesome. Sealtest good!"

BE SURE TO ENJOY THESE OTHER TOP-QUALITY SEALTEST TREATS IN MULTI-PAKS!

Fudgeicles, ICE CREAM SANDWICHES, TOFFEE BUNCH BARS, Popsicles, LASSIE BARS.

GET THE BEST! GET SEALTEST!

BLUE CROSS **BLUE SHIELD**

OFFER A VARIETY OF GROUP HOSPITAL AND MEDICAL-SURGICAL PROTECTION PLANS AND RANGE OF BENEFITS OF INTEREST TO EVERY ELIGIBLE KENTUCKY COMPANY

OVER 8,000 KENTUCKY COMPANIES NOW HAVE BLUE CROSS-BLUE SHIELD GROUP PROTECTION PLANS

GROUP PLANS MAY BE FORMED WHERE THERE ARE 5 OR MORE EMPLOYEES

INDIVIDUALS MAY APPLY TOO

MAIL THIS HANDY COUPON TODAY

1510 CROSS-BLUE SHIELD, 1510 Bardonia Road, Louisville 5, Kentucky MO-LC-1

Please send me information and an application for Blue Cross-Blue Shield.

NAME _____ ADDRESS _____ CITY _____ STATE _____

FARM BUREAU MEMBERS: See Your Farm Bureau Agent

A Success Story

Agriculture Department's Book Is Birthday Present To Itself

The Agriculture Department has just published a 560-page autobiography of its first 100 years...

The last 30 years to bring about stability through use of crop controls, price supports, and subsidies...

to 90 percent in some areas of the world. Freeman said that his department has a responsibility to the future...

Termites? CALL Bruce-Terminix! "World's largest termite control organization" \$5000 GUARANTEE

Carr Lumber Co. Phone State 4-5438 All Work Done by Terminix Co. Lexington, Ky.

LIL ABNER'S LIL ABNER'S LIL ABNER'S LIL ABNER'S I PERDIT... that a lot of people will see their friends at Lil Abner's this weekend...

ANNOUNCING THE OPENING OF MORRISON FLYING SERVICE Student Training Charter Flights Rides

AUTO PARTS NEW AND USED 700 CARS FROM WHICH TO CHOOSE NEW ROCKER PANELS - BODY PLASTIC RECHROME BUMPERS - NEW TAIL LIGHT LENSES - RESULT STARTERS AND BATTERIES

The American farmer himself is a major part of the answer to the question of how this change is being made...

2 Million Farm Workers Build SS Benefits Almost two million hired farm workers are now building social security credit toward future benefits for themselves and their families...

These reports are due in January of each year. But, right now, in the growing season, the farm employer needs to make sure that he is keeping a record of the people he hires so that he will be in a position to make his report when January rolls around...

Friday Is Anniversary Of Boone's Arrival The Kentucky Historical Society tomorrow (Friday) will commemorate the 194th anniversary of Daniel Boone's entry into Kentucky...

Cancer-Fag Connection Is Unproved

By J. E. Stanford Although attacked for the last several years by various groups as being the cause of lung cancer, the cigarette is still holding its ground and remains unconvicted...

The book shares credit also with the state agricultural colleges and universities, the state experiment stations, the farm press, farmers' own organizations, farm cooperatives, implement manufacturers, fertilizer producers, the home and industry and others in the agricultural field...

The book winds up with this self-eulogy: "Truly, the people of the United States have reason to be proud of one of the nation's great institutions dedicated to the welfare of the American individual..."

YOU CAN'T BEAT THESE FOOD SAVINGS! SWEETWAY SUPER MARKET DOUBLE BONUS BUCK DAYS ARE HERE AGAIN!

All This Week We Will Give Two Bonus Bucks For Each \$1.00 Purchase. These Bonus Bucks Are Good Toward Valuable Premiums On Display In Our Store.

Anyone wishing to cash Bonus Bucks for the Northeast Kentucky Hospital Foundation Fund can do so by returning them to us. We will send the check to the Hospital Fund in your name.

ANY BRAND BREAD... Reg. Size 2 For 29c FLOUR 10-Lb. Bag 89c

INTRODUCTORY OFFER! 12c OFF... Blue Ribbon MARGARINE 2 Lbs. 29c

CLOROX... 29c Ice Cream... 59c Pork Steaks... 39c

PORK LIVER... 19c BACON... 29c TOMATOES... 2 Lbs. 29c RADISHES... 3 For 25c

We Reserve The Right To Limit Quantity Due To Supply Problem