



75th Anniversary

Two-Year Calendar
1997-1998



Fire	911
Police	911
Sheriff	911
Kentucky State Police	606-784-4127

Ambulance	911
Civil Defense	911
Federal Bureau of Investigation	1-502-583-3941

Academic Affairs, Executive Vice President for	area code 606	783-2002
Administration & Fiscal Services, Vice President for		783-2053
Admissions		783-2000
Adron Doran University Center		783-2810
Alumni Relations & Development		783-2080
Ashland Area Extended Campus		783-2901
Athletics		783-2088
Big Sandy Extended Campus (Prestonsburg)		886-2405
Business, College of		783-2174
Distance Education		783-2082
Education & Behavioral Sciences, College of		783-2040
Humanities, Caudill College of		783-2650

Kentucky Folk Art Center	783-2204
Library	783-2200
Licking Valley Extended Campus (West Liberty)	743-1500
President, Office of the	783-2022
Public Safety	783-2035
Registrar	783-2008
Science & Technology, College of	783-2158
Student Activities and Organizations	783-2071
Student Life, Vice President for	783-2070
University Advancement, Vice President for	783-2031
WMKY	783-2001

[illegible][illegible]

1997-1998 Morehead State University Tentative Sports Schedules

1997 Eagle Volleyball Schedule	1997 Eagle Football Schedule	1997-98 Men's Basketball	1997-98 Women's Basketball
Sept. 12 at Austin Peay Sept. 13 at Tennessee State Sept. 19 Tennessee-Martin Sept. 30 Murray State Sept. 26 at Southeast Missouri Sept. 27 at Eastern Illinois Oct. 3 Middle Tennessee State Oct. 4 Tennessee Tech Oct. 17 at Murray State Oct. 18 at Tennessee-Martin Oct. 24 Tennessee State Oct. 25 Austin Peay Nov. 7 at Tennessee Tech Nov. 8 at Middle Tennessee Nov. 14 Eastern Illinois Nov. 15 Southeast Missouri	Sept. 20 Valparaiso Sept. 27 University of Dayton Oct. 4 at South Florida Oct. 11 Wofford College <i>(Homecoming)</i> Oct. 25 at St. Joseph's College Nov. 1 at Western Kentucky Nov. 8 Charleston Southern Nov. 15 University of Evansville	Dec. 4 at Tennessee-Martin Dec. 6 at Murray State Jan. 3 Southeast Missouri Jan. 5 Eastern Illinois Jan. 8 at Tennessee State Jan. 10 at Austin Peay Jan. 13 Tennessee-Martin Jan. 17 Eastern Kentucky Jan. 22 Tennessee Tech Jan. 24 Middle Tennessee Jan. 29 at Southeast Missouri Jan. 31 at Eastern Illinois Feb. 3 Murray State Feb. 5 Tennessee State Feb. 7 Austin Peay Feb. 14 at Eastern Kentucky Feb. 19 at Tennessee Tech Feb. 21 at Middle Tennessee Feb. 24 at OVC Tournament Feb. 27 at OVC Tournament Feb. 28 at OVC Tournament	Dec. 6 at Murray State Dec. 8 at Tennessee-Martin Jan. 3 Southeast Missouri Jan. 5 Eastern Illinois Jan. 10 at Austin Peay Jan. 12 at Tennessee State Jan. 14 Tennessee-Martin Jan. 17 Eastern Kentucky Jan. 24 Middle Tennessee Jan. 26 Tennessee Tech Jan. 31 at Eastern Illinois Feb. 2 at Southeast Missouri Feb. 4 Murray State Feb. 7 Austin Peay Feb. 9 Tennessee State Feb. 14 at Eastern Kentucky Feb. 19 at Tennessee Tech Feb. 21 at Middle Tennessee Feb. 24 at OVC Tournament Feb. 27 at OVC Tournament Feb. 28 at OVC Tournament
Home games in bold ; times TBA	Home games in bold ; times TBA	Home games in bold ; times TBA	Home games in bold ; times TBA

The First Commuters

Alice A. Williams and Warren M. Woodlum, students at Morehead Normal School around 1895



January 1997

SUNDAY	MONDAY	TUESDAY	WEDNESDAY	THURSDAY	FRIDAY	SATURDAY
			1	2	3	4
5	6	7	8	9	10	11
12	13	14	15	16	17	18
19	20	21	22	23	24	25
26	27	28	29	30	31	

• 1931, Johnson Camden Library opens

• 1967, ground-breaking for Claypool-Young Art Building



"The Princess"

Actors in a 1904 production of Tennyson's play

February 1997

SUNDAY	MONDAY	TUESDAY	WEDNESDAY	THURSDAY	FRIDAY	SATURDAY
						1
2	3	4	5	6	7	8
9	10	11 <i>• 1987, Ellis Johnson Arena dedicated</i>	12	13	14	15
16	17	18	19	20 <i>• 1957, Eagle cagers defeat Western for OVC basketball title</i>	21	22 <i>• 1969, ΔΖ chartered, first Greek letter sorority on campus</i>
23	24	25 <i>• 1944, Eagles defeat Georgetown for KJAC Basketball Championship</i>	26 <i>• 1966, Morehead State College (MSC) becomes Morehead State University</i>	27	28 <i>• 1961, Eagles defeat Eastern for OVC basketball title</i>	



Ready for the majors

The 1957 baseball team won the O.V.C. championship.

March 1997

SUNDAY	MONDAY	TUESDAY	WEDNESDAY	THURSDAY	FRIDAY	SATURDAY
						1
2 • 1963, Eagles claim share of OVC basketball title when Eastern defeats league-leading East Tennessee	3	4 • 1929, college gymnasium (now Button Auditorium) opens	5	6	7	8 • 1922, Gov. Morrow signs bill to establish two new normal schools, State Normal School Act of 1922
9	10	11	12	13	14	15
16	17	18	19	20	21	22 • 1972, Eagles battle to 3-way OVC basketball tie
23 30 • 1968, Mary Ann Buddick crowned first Miss MSU	24/31	25	26	27	28	29



Staying Afloat

The Navy at Morehead State during World War II

April 1997

SUNDAY	MONDAY	TUESDAY	WEDNESDAY	THURSDAY	FRIDAY	SATURDAY
		1	2	3	4 • Founders Day	5
6 • 1954, Adron Doran named 7th president	7	8	9	10	11	12
13	14	15 • 1924, Board of Regents holds first meeting, hires Olmstead Bros. to plan campus landscape	16	17	18	19 • 1965, Perkins and Cooper Halls dedicated
20	21 • 1930, Breckinridge Hall cornerstone placed • Math Awareness Week	22	23 • 1989, MSU women bowlers win national title	24	25	26 • Spring Gala
27	28 • 1984, Herb F. Reinhard, Jr. named 9th president	29	30			



May Day royalty

A former tradition on the lawn of Allie Young Hall

May 1997

SUNDAY	MONDAY	TUESDAY	WEDNESDAY	THURSDAY	FRIDAY	SATURDAY
				1	2 <i>• 1930, John Howard Payne inaugurated as 2nd president</i>	3
4	5	6 <i>• 1899, Morehead Normal School incorporated</i>	7	8	9	10 <i>• Mignon Doran Day</i>
11 <i>• 1968, first horse show held at University Farm</i>	12 <i>• 1973, ground-breaking for Alumni Hall</i>	13	14	15	16 <i>• 1969, Eagle baseballers win OVC crown</i>	17 <i>• Graduation</i>
18	19	20	21	22 <i>• 1922, town of Morehead conveys Normal School property to Commonwealth of Kentucky</i>	23	24
25 <i>• 1964, ground-breaking for Breathitt Sports Center baseball field</i>	26 <i>• 1963, Eagles share OVC baseball title</i>	27	28	29	30 <i>• 1969, TKE chartered, first Greek letter fraternity on campus</i>	31



Early Birds

Members of the Fresh Air Club of Morehead walked five miles before breakfast, at five o'clock in the morning.

June 1997

SUNDAY	MONDAY	TUESDAY	WEDNESDAY	THURSDAY	FRIDAY	SATURDAY
1 • 1942, the first class of 150 "Blue Jackets" arrives on campus to attend Navy Training School	2	3	4	5	6	7
8	9	10	11	12	13	14
15	16	17	18	19	20	21
22 • 1887, end of Martin-Tolliver Feud • Appalachian Celebration, thru 6/27	23	24	25	26 • Family University Nexus (FUN), thru 6/28	27 • 1954, Button Auditorium dedicated	28 • Appalachian Craft Market
29	30					



"Old Glory"
Long may she wave at MSU!

July 1997

SUNDAY	MONDAY	TUESDAY	WEDNESDAY	THURSDAY	FRIDAY	SATURDAY
		1 <i>• 1992, Ronald G. Eaglin becomes 12th president</i>	2	3	4	5
6	7	8 <i>• 1943, 17,000 baby chicks hatched and brooded by H. Haggan, the head of the Ag. Dept. to supply farmers</i>	9	10	11	12
13	14	15	16	17	18	19 <i>• Greek Alumni Weekend</i>
20	21	22	23	24 <i>• 1929, John Howard Payne elected 2nd president</i>	25	26
27	28	29	30	31 <i>• Family University Nexus (FUN), thru 8/2</i>		



Faculty 1921-22

(Miss Leslie, Helen Fulbright, Inez F. Humphrey, "Ma" Hart, Caroline Whitenah, Bernice Miller, Warren C. Lappin, Cora Lappin, and Warren O. Lappin)

August 1997

SUNDAY	MONDAY	TUESDAY	WEDNESDAY	THURSDAY	FRIDAY	SATURDAY
					1 <i>• 1929, John Howard Payne named 2nd president</i>	2
3	4 <i>• 1884, Martin-Tolliver Feud begins</i>	5	6	7	8	9
10 <i>• 1887, Kentucky Christian Mission Board votes to establish school in Morehead</i>	11	12	13	14 <i>• 1991, newly renovated Thompson Hall reopened</i>	15	16
17 <i>• 1990, Fields Hall rededicated following renovation</i>	18	19	20	21	22	23
24/31	25	26	27	28	29	30

Encore

From Tennyson's "The Princess" in 1904 to Weber's "Joseph and The Amazing Technicolor Dreamcoat" in 1995



September 1997

SUNDAY	MONDAY	TUESDAY	WEDNESDAY	THURSDAY	FRIDAY	SATURDAY
	1	2	3	4	5	6
7	8 <i>• 1887, F.C. Button accepts assignment to start school in Morehead</i>	9	10	11	12	13
14	15	16 <i>• 1994, Gene Caudill sworn in as first staff member of Board of Regents</i>	17	18	19	20
21	22 <i>• 1973, Allen Field dedicated</i>	23 <i>• 1923, Morehead State Normal School opens</i>	24	25	26 <i>• Family Weekend, thru 9/27</i>	27 <i>• Moonlight School Program, 4:30 p.m.</i>
28	29	30				



For the first non-traditional students

A horse-drawn float commemorates Cora Wilson Stewart's Moonlight School.

October 1997

SUNDAY	MONDAY	TUESDAY	WEDNESDAY	THURSDAY	FRIDAY	SATURDAY
			1	2	3 <ul style="list-style-type: none"> 1887, Buttons open their school under direction of Kentucky Christian Mission Board Appalachia in a Multicultural World Celebration 	4 <ul style="list-style-type: none"> 1927, first issue of the unnamed college newspaper
5	6	7	8	9	10 <ul style="list-style-type: none"> Homecoming 	11
12 <ul style="list-style-type: none"> 1961, James Still Room dedicated 	13	14	15	16	17 <ul style="list-style-type: none"> 1964, Breathitt Sports Complex dedicated 	18
19 <ul style="list-style-type: none"> 1968, Claypool-Young Art Building dedicated 	20	21	22	23	24 <ul style="list-style-type: none"> 1947, Betty Jo Branham crowned first homecoming queen 	25
26	27	28	29	30 <ul style="list-style-type: none"> 1936, MSU defeats EKV and takes possession of "Hawg Rifle" (football) 	31	



Passing the "Hawg Rifle"

Symbol of the friendly football rivalry between MSU and Eastern Kentucky University

November 1997

SUNDAY	MONDAY	TUESDAY	WEDNESDAY	THURSDAY	FRIDAY	SATURDAY
						1 <i>• 1935, Harvey Babb named 3rd president</i>
2	3	4	5	6	7	8 <i>• 1969, Nunn Hall dedicated</i>
9 <i>• 1961, Eagle Mascot presented at pep rally before Eastern game</i>	10	11	12 <i>• 1966, MSU defeats ECU to win OVC football championship</i>	13 <i>• 1992, MSU Marching Percussion Ensemble wins first of two national championships</i>	14	15
16	17	18	19 <i>• 1967, Mignon Complex dedicated</i>	20	21	22 <i>• 1963, Combs, Waterfield and Regents Halls dedicated</i>
23 <i>• 1945, first group of faculty who resigned to participate in WWII re-instated</i> 30	24	25	26	27	28	29



THE ADORNED
UNIVERSITY CENTER

Light in the Mountains
ADUC glows during the holidays, 1990.

December 1997

SUNDAY	MONDAY	TUESDAY	WEDNESDAY	THURSDAY	FRIDAY	SATURDAY
	1	2	3	4	5	6
7	8	9	10	11	12 <small>• Annual Holiday Dinner Party</small>	13
14	15	16	17	18	19	20
21	22	23	24	25	26	27
28	29	30	31			

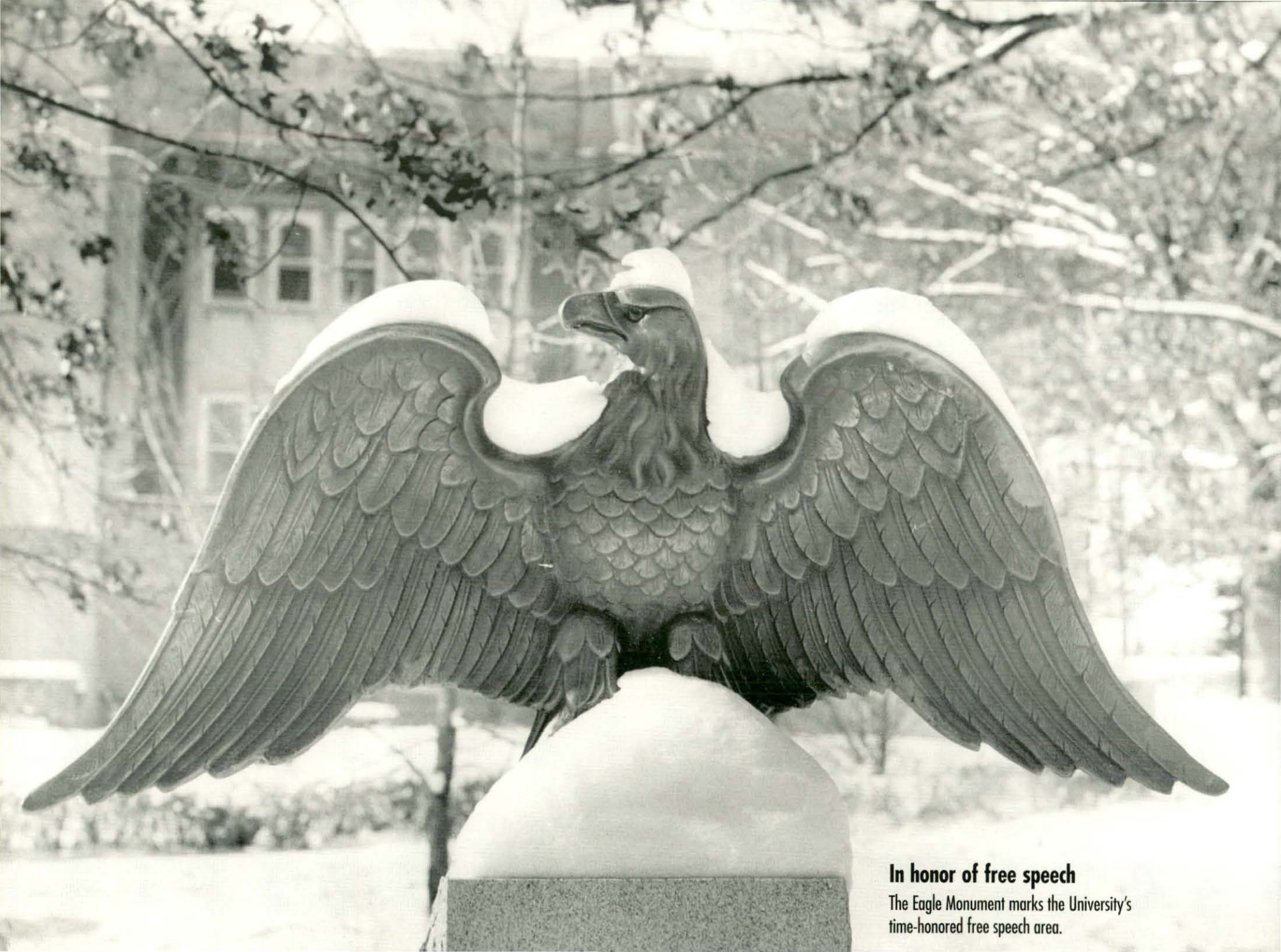
Winter Wonderland

Continuing the quest for an education, regardless of the weather.



January 1998

SUNDAY	MONDAY	TUESDAY	WEDNESDAY	THURSDAY	FRIDAY	SATURDAY
				1	2	3
4	5	6	7	8	9	10
11	12	13	14	15	16	17
18	19	20	21	22	23	24
		• 1973, MSU Band performs in Nixon Inaugural Parade				
25	26	27	28	29	30	31



In honor of free speech

The Eagle Monument marks the University's time-honored free speech area.

February 1998

SUNDAY	MONDAY	TUESDAY	WEDNESDAY	THURSDAY	FRIDAY	SATURDAY
1	2	3	4	5	6	7
8	9	10	11	12	13	14
			• Band Clinic			
15	16	17	18	19	20	21
		• Faculty Follies				• 1934, Council on Public Higher Education created by Ky. General Assembly
22	23	24	25	26	27	28
		• 1963, Mignon Hall formally opens		• 1984, Eagles win OVC basketball crown	• 1969, Eagles defeat East Tennessee to become OVC basketball co-champions	
	• Ongoing alumni art exhibit beginning in February through spring semester					



March Madness
The first team uniforms(?)

March 1998

SUNDAY	MONDAY	TUESDAY	WEDNESDAY	THURSDAY	FRIDAY	SATURDAY
1	2 • Of Time, Place, and Power: A Celebration of History, Geography, and Government, thru 3/6	3	4 • 1974, Eagles OVC Co-Champions	5	6	7
8 • 1956, Eagles defeat Western for OVC basketball title	9	10	11	12	13	14
15	16	17	18	19	20	21
22	23	24	25	26 • Wilma E. Grote Symposium for the Advancement of Women, thru 3/28	27	28
29	30	31				



Take Me Out to the Ball Game
Morehead Normal School baseball team

April 1998

SUNDAY	MONDAY	TUESDAY	WEDNESDAY	THURSDAY	FRIDAY	SATURDAY
			1	2	3 • Founders Day	4
5	6	7 • 1995, Campus named National Register, Historic District	8	9	10	11 • 1985, Herb F. Reinhard, Jr. inaugurated as 9th president
12	13	14	15	16	17	18
19	20	21	22	23	24	25
26	27	28	29	30 • 1940, William H. Vaughan named 4th president		

The First Graduation, 1902

(Virgil Bryan, Florence Evans, Anna Knapp, Lena Carey, Maude Tippet, Ezra Proctor, and Alice Whitt)



May 1998

SUNDAY	MONDAY	TUESDAY	WEDNESDAY	THURSDAY	FRIDAY	SATURDAY
					1 <i>• 1968, Frank Mangrum and Quentin Hatfield sworn in as first faculty and student regents</i>	2
3	4	5 <i>• 1936, Harvey Babb inaugurated as 3rd president</i>	6	7	8	9
10 <i>• 1956, Eagle "thinlies" win OVC track title</i>	11	12	13	14	15	16
17 <i>• 1957, Eagles win OVC baseball crown</i>	18 <i>• 1995, an early morning wind storm uproots most trees between Allie Young and Button</i>	19	20	21	22	23
24/31	25	26	27	28 <i>• 1951, Charles R. Spain elected 6th president</i>	29	30



Then and Now

Doran Student House in 1964; the architect's drawing of the Adron Doran University Center

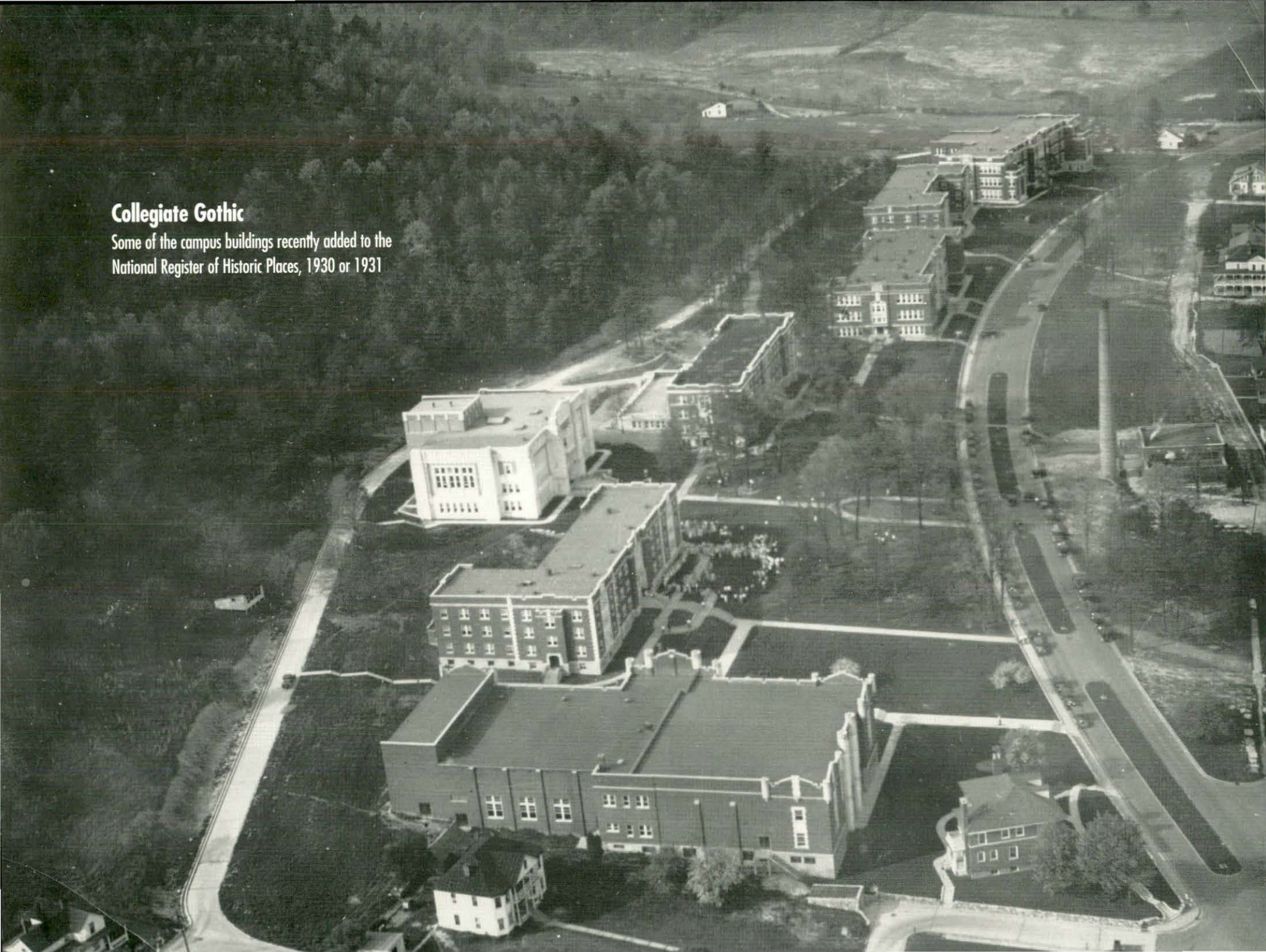


June 1998

SUNDAY	MONDAY	TUESDAY	WEDNESDAY	THURSDAY	FRIDAY	SATURDAY
	1 <i>• 1981, Academic-Athletic Center officially opened</i>	2	3	4	5	6
7	8	9	10	11	12	13 <i>• 1986, A.D. Albright named 10th president</i>
14 <i>• 1965, WMKY goes on the air</i>	15	16	17	18	19	20
21	22	23	24	25	26	27
28	29	30				

Collegiate Gothic

Some of the campus buildings recently added to the
National Register of Historic Places, 1930 or 1931



July 1998

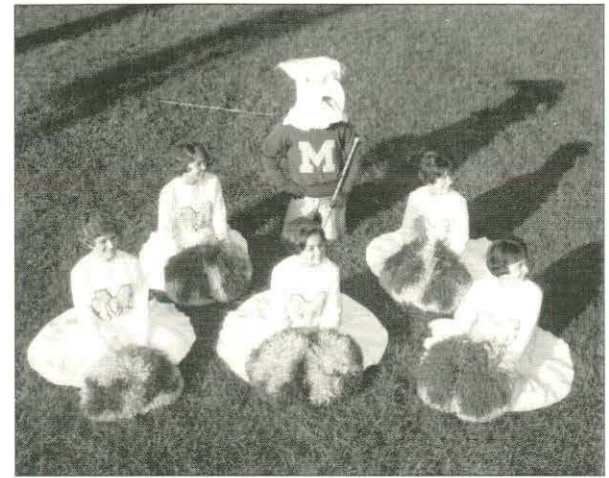
SUNDAY	MONDAY	TUESDAY	WEDNESDAY	THURSDAY	FRIDAY	SATURDAY
			1 <i>• 1946, Warren C. Lappin serves as acting president • 1987, C. Nelson Grote becomes 11th president</i>	2	3	4
5	6	7	8	9	10	11
12	13	14	15	16	17	18
19	20	21	22	23	24	25
26	27	28	29	30	31 <i>• 1900, Morehead Normal School placed under control of Christian Woman's Board of Missions</i>	



The Band Plays On
A long line of excellence

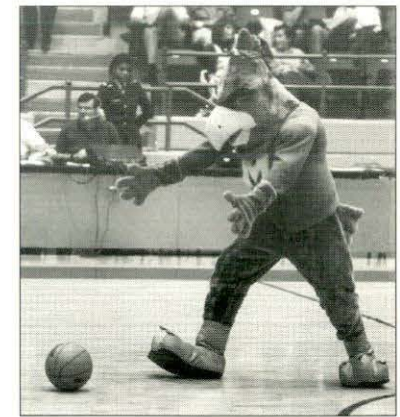
August 1998

SUNDAY	MONDAY	TUESDAY	WEDNESDAY	THURSDAY	FRIDAY	SATURDAY
						1
2	3	4	5	6 <i>• 1946, William J. Baird becomes 5th president</i>	7	8
9	10	11	12	13	14	15
16	17	18	19 <i>• 1981, University Breckinridge School merges with Rowan County School System</i>	20	21	22
23/30	24/31	25	26	27	28	29



Beaker

The many faces of the Eagle mascot



September 1998

SUNDAY	MONDAY	TUESDAY	WEDNESDAY	THURSDAY	FRIDAY	SATURDAY
		1	2	3	4	5
6	7	8	9	10	11	12
13	14	15	16	17	18	19
20	21 <i>• 1956, MSC Regents vote to admit anyone who meets requirements and MSC becomes 1st state college to admit African-Americans</i>	22	23 <i>• 1993, Kentucky Folk Art Center established at Morehead State</i>	24 <i>• 1940, state CHE authorizes Masters in Education at Morehead</i>	25	26
27	28	29	30			



"Hatched at Last" (1923)

Homecoming is always a time of celebration and fun

October 1998

SUNDAY	MONDAY	TUESDAY	WEDNESDAY	THURSDAY	FRIDAY	SATURDAY
				1	2	3
4	5	6 <small>• 1976, Morris L. Norfleet named 8th president</small>	7	8	9	10
11	12	13	14	15	16	17
18	19	20	21	22	23	24
25	26 <small>• 1966, Eagle Mascot named "Beaker"</small>	27	28	29	30 <small>• 1987, C. Nelson Grote inaugurated as 11th president</small>	31



"Go Big Blue!"

MSU's varsity cheerleaders have won seven national championships.

November 1998

SUNDAY	MONDAY	TUESDAY	WEDNESDAY	THURSDAY	FRIDAY	SATURDAY
1	2	3 <i>• 1995, MSU Marching Percussion Ensemble wins national championship for second time</i>	4	5	6	7
8	9	10	11	12	13	14
15	16	17	18	19	20	21
22	23	24	25 <i>• 1922, Morehead selected as site of new state normal school</i>	26	27	28
29	30 <i>• 1943, day after Thanksgiving, Navy school group met at depot and treated to turkey sandwiches</i>					



Holidays past

Many remember the old Norway spruce in its holiday garb.

December 1998

SUNDAY	MONDAY	TUESDAY	WEDNESDAY	THURSDAY	FRIDAY	SATURDAY
		1	2	3 <small>• 1962, Wilson Hall dedicated</small>	4	5
6	7	8	9	10	11	12
13	14	15	16	17	18	19
20	21	22	23	24	25	26
27	28	29	30	31		

F. C. Button &
oldest daughter Hattie.
The Morehead Normal
was started by the Christian
Church in 1887 - Sept. 17
Phebe E. Button, mother
of F. C. Button
bought this house & large
tract of land.
The school began here
upstairs of their home.
Had one pupil, an orphan
the first day - Anna Page

Handwritten note attached to the back of photo of the Button family used on the cover.

The note reads: F.C. Button & oldest daughter Hattie. The Morehead Normal (School) was started by the Christian Church in 1887 - Sept. 17 Phebe E. Button, mother of F.C. Button, bought this house and large tract of land. The school began here upstairs of their home. Had one pupil, an orphan, the first day - Anna Page.