

Morehead News

Formerly Rowan County News - Name Changed January, 1963

MOREHEAD, KENTUCKY, THURSDAY MORNING, MARCH 21, 1963

18,000 Readers
This newspaper is read by almost every body, with buying power, in the Morehead area... over 90% saturation in Rowan County.

10¢ On Newsstands
By Mail...
In Kentucky, One Year \$1.50
Delivered, One Year \$1.75
Outside Kentucky, One Year \$2.00
Outside Kentucky, Two Years \$3.50

Volume No. 80

Member Kentucky Press Association

Member National Editorial Association

Number Twelve

Two Mishaps Cause Only Minor Damage

Two minor automobile accidents caused only property damage in Rowan County during the last week, Kentucky State Police reported Wednesday.

A Sunday mishap three miles west of Morehead on US 60 involved cars driven by Richard Merrett, White, 22, of Farmers and Jerry Austin Riddle, Route 2, Morehead.

The police report indicated the vehicle driven by Merrett stopped because of a car on the side of the road with a flat tire. The car driven by Riddle collided with the rear of Merrett's car.

A collision involving an empty school bus and a truck was reported Tuesday.

Polio Make-Up Clinics Scheduled Tomorrow

Anybody miss Type 2 or Type 3 Sabin oral polio vaccine? For those who did the first time around, there'll be another chance tomorrow (Friday) at the Rowan County Health Center.

From 9 a.m. to noon and from 1 p.m. to 4 p.m., the health department will conduct make-up clinics for both types of the polio preservative.

Fifteen Students From RCHS Enter Speech Festival

Fifteen Rowan County High School students have been chosen to take part in the annual speech festival, to be held Friday and Saturday at Morehead State College.

Entries will include: Debate, Larry Kepley, Rocky Hadix and David Richardson; dramatic reading, Larry Kepley, Elsie Caudill; public speaking, Rocky Hadix and Donna Reynolds; extemporaneous speaking, J. D. Reeder and David Richardson.

Poetry reading, senior high, Dallas McLean and Judy Lewis; expository, young high, Jerry Swann and Ronald Richardson; monologue, Joe Redwine; oratorical, Larry Kepley, J. D. Reeder and Anthony Lambert; radio speaking, Bonnie Tompkins and James Henderson; extemporaneous speaking, J. D. Reeder and David Richardson.

All are students in the RCHS Speech and Drama Department. The RCHS students will be among several hundred from Eastern Kentucky taking part in the Friday and Saturday event.

Elliottville Man Claimed East Week

Death came last Wednesday to Jason Perkins, 66. He died at his home near Elliottville.

Widow of the late Willie and Lettie Perkins, Mrs. Bessie Perkins, 62, was born May 4, 1896.

Perkins was united in marriage to the late Perkins in 1915. He had three children, James, Fred and Troy Perkins, all of whom are deceased.

Other survivors include a daughter, Mrs. Edna Durham, Morehead, three brothers, Russell A. Perkins, Redwine, Ky., and Chester Perkins, O. and a sister, Mrs. Lela Farn, also of Fairborn.

Funeral services were held Friday at 1:30 p.m. in Fair Chapel, Rev. Noah Spencer officiated.

Burial was in the Perkins family cemetery.

Sucky Funeral Home cared for the arrangements.

Williamsburg Firm Low Bidder On 30 Low-Rent Municipal Housing Units

Construction May Be Done Within Year

Low-rent municipal housing moved a step closer to reality in Morehead this week with opening of construction bids for 30 units.

Arthur Mays Construction Co., of Williamsburg, Ky., was the apparent low bidder among the four bidders, quoting a figure of \$390,000. Mays' bid was only \$500 under that of C. S. Summers Co., Vidalia, Ga., at \$390,500.



Other bidders and their proposals included: A. B. Newton Construction Co., Vidalia, Ga., \$398,000 and G. H. Hunter, Betsy Layne, Ky., \$310,000.

City officials of the Morehead Municipal Housing Commission said only an error in additional calculations for bid represented rather than \$410,000, making all four bids actually within some \$20,000 of each other.

The number of bids was a surprise to members of the commission. More than 20 firms and persons had paid \$50 each for sets of plans for the project, leading the commission to believe that many more than the four bids would be received.

Revision of some specifications in the project is expected to be completed shortly, reducing the number of bid representatives of the low bidder and working on the changes.

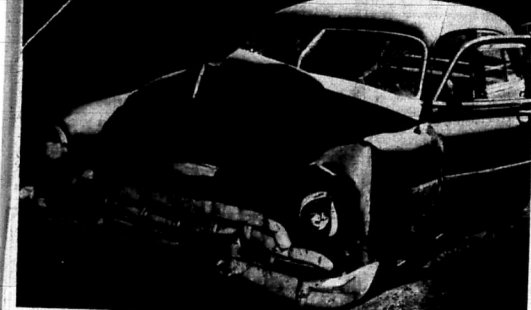
LeGrande Jarvis, executive director of the housing body, said a contract could be let within 30 days. Mays' bid was the lowest completed in less than a year.

The one-half acre tract near the Morehead High School.

In the weeks for nearly four years, the housing units were completed by families whose combined incomes do not exceed \$2,000 a year. Rentals will be determined by income.

Morehead State College will put up by the federal government. The project consists of one, two and three-bedroom apartments and 15 duplex buildings. An administrative building is called for along with playgrounds, landscaping, roads and parking facilities.

In order to be eligible, potential tenants must live within the city limits of Morehead.



DEATH CAR—This heavily-damaged car is the one in which Mrs. Della Ramey, 60, was fatally injured on West Main Street here last Wednesday. Police reports indicate the vehicle, driven by Mrs. Ramey's husband, Harrison Ramey, 61, who was also injured, was a passenger car which collided with two vehicles on West Main Street.

Main Street Mishap

Car Collision With 2 Trucks Brings Death To Local Woman

An 80-year-old Morehead woman was injured fatally last Wednesday when the car in which she was a passenger collided with two vehicles on West Main Street.

Mrs. Della Ramey died only minutes after the 9:30 p.m. mishap which happened near Main Street's intersection with the Thomas Addition road.

She was a passenger in a car driven by her husband, Harrison Ramey, 61, who was also injured, along with two other passengers, Bonnie Ramey, a daughter, and Mrs. Virginia Cox.

Mrs. Cox, the most seriously hurt of the injured, was taken to St. Joseph Hospital in Lexington where she remains a patient this week. Her condition, first said to be critical, is reportedly improved.

Ramey and his daughter sustained less severe hurts and were treated by a local physician.

State police reports indicate that the Ramey car, headed east, ran into the left rear of a large truck parked on Main Street. It then went out of control and careened about 150 feet before colliding head-on with a pickup truck. Driver of the pickup was Wilmer Eaton, 40, of Clearfield. He was not seriously injured.

The parked truck was owned by the F. J. Rose Lumber Company of Morehead, O. The driver was Manfred M. Rose, who lives in the Thomas Addition.

The Rameys reportedly were on their way to see a doctor when the accident occurred.

Markwell Gets Two-Year Term; Six Indictments Handed Down

The case of a man charged with shooting into a motor vehicle with a rifle in Rowan Circuit Court Monday.

Also on the schedule are three civil cases.

Chester Stevens will face trial on US 32 near Roburs last fall. Sheriff Curt Lewis said glass in the car was shattered, but no injuries resulted.

The civil action include: Winford Carter and others vs. Luther Cecil Howard vs. K&L Supply; and Barton vs. Trammell Co.

Academic Troubles Strike Grid Team At Morehead State

Academic difficulties have taken a heavy toll on Morehead State College's football team.

Lost to the Eagles are three freshmen halfback prospects—Bobby Gene Oliver, Reggie McGinnis and Charles LaPorta.

Also lost was redneck tackle Bob Craig of Paris, a 6-2, 220-pounder, who had made considerable action in future camp.

Chief loss was Oliver, a 5-8, 180-pound halfback who had developed into a promising young player. An all-stater from South ball in West Virginia, Oliver finished as the Eagles' third leading rusher with 170 yards for the season.

McGinnis, 5-11 and 175-pounds, suffered a leg injury that sidelined him for the latter part of Morehead's schedule. He was a star halfback on the Niles McKinley High team of 1961 which won the Ohio championship that year.

LaPorta came to Morehead after starting as a defensive halfback at Jamestown High in Pennsylvania. He saw action in the Morehead-Tennessee Tech game, but suffered an injury in practice that cost him further action for the season.

STATE LEADERS ON PROGRAM

Chandler-Waterfield 7th District Rally Set Monday

More than 5,000 supporters of A. B. Chandler's bid to become Kentucky's first three-term governor are expected in Morehead Monday.

The occasion will be the formal opening of their Seventh District campaign by Chandler and his running mate for lieutenant governor, Harry Lee Waterfield.

The rally will be held in the Morehead State College Fieldhouse, beginning at 7:30 p.m. The Morehead meeting is one of a series of campaign openings being held in each of the state's seven congressional districts.

Rank-and-file Chandler-Waterfield supporters from all of the Seventh's 23 counties are being planned for, according to Bruce Botts, Rowan County co-chairman for the campaign and coordinator for the Monday rally.

Early reports, Botts said, indicate that large motorcade are being formed in nearby counties and that even distant counties will have substantial representation at the opening.

Botts predicted: "This will be one of the largest political gatherings in this section in recent history."

Evidence of the importance being placed on the Seventh District opening is the fact that a number of statewide political figures will be on hand.

They will include former U.S. Senator Earle C. Clements, Markham of Shelbyville, state chairman for the Chandler-Waterfield team, Mrs. J. Murray Blue, state women's chairman, Joseph J. Leary, Trickett attorney and top campaign strategist, State Treasurer Frank Stovall and other political circles.

Master of ceremonies will be Collier Cornette, Morehead business man and a leader in the local Chandler-Waterfield organization.

Activities in connection with the Monday rally will begin at noon, when Rowan County Chandler-Waterfield headquarters will hold an open house. To continue until 7 p.m., the open house will feature refreshments for all comers.

The headquarters is located on Morehead's East Main Street, a short distance west of the Fieldhouse.

There is a good chance that Chandler and Waterfield, should they arrive early enough, will put in an appearance at the headquarters, as well.

Parking facilities for several thousand cars will be provided. The Colledge Boulevard, adjacent to the Fieldhouse and Jayne Stadium, will be utilized, Botts said. In addition, the parking lot of the East End United Methodist Church has been made available, along with a lot adjoining a service station which Botts owns.

Morehead was chosen as the site for the limited rally because it is near the geographic center of the Seventh and because of the availability of the Fieldhouse, a large facility of its type in this territory.

Both Chandler and Waterfield will be returning to "friendly" territory when they come to Rowan County Monday. Both have run well here every time their names have been on the ballot.

Chandler and Waterfield first came to prominence as a team in 1950 when they were elected governor and lieutenant governor over a state backed by the administration of Gov. Lawrence Wetherby.

Heading the Wetherby-advanced ticket was Bert Combs, who had recently resigned as a judge of the Court of Appeals.

Chandler won by a majority of more than 18,000 and went on to a new record of more than 128,000 in the general election.

However, when Waterfield attempted to move up to the governor's chair in 1958, he went down to defeat at the hands of a ticket again headed by Combs, and which included Willard Wyatt.

Combs and Wyatt were elected in November, and the record on record majorities, wiping out the mark set by Chandler and Waterfield again headed by Combs.

Political—and oftentimes personal animosity has existed between the two candidates and the "Chandler faction" since the 1955 election.

Breck Dropped First Tilt To Taylor 57-43 In State Tournament

Breckknidge Training School, a surprise entry in the state high school basketball tournament, was dropped from the meet in opening round play, losing to Taylor County, 57-43.

It was a case of a Breck team gun on fight but short on height against one of the state's most potent live and in-the-end-the-fact boys.

Headed by Clem Haskins, 6-foot, 4-inch Negro star who reportedly is being sought by more than 10 colleges and universities, Taylor County won an 80-40 before Breck could mark on the score-boards. Haskins never drew closer than three points.

Trailing 17-8 at the end of the first quarter, Breck quickly scored six points while the Campbellsville club failed to tally and narrow the margin to 17-14.

However, Taylor County then went on a rampage, outscoring Campbellsville 18-10 in the second quarter.

Intents and purposes settling the outcome by 74-44 at the end of the third period, Breck managed to outpace the Sixth Region winners 16-13 in the final quarter.

Haskins, an 18-year-old senior, paced Taylor County with 19 points. "Bob Laughlin added 11 points in the second half to his 21-point first half total, to lead Breck with 17. Peter Coye dropped in 12 and Harold Slone contributed 10.

The trip to the state tournament was the first for Breck since 1946 when its representatives took the state championship.

X-Ray Unit Visit Set For Morehead Monday

The Rowan County Department of Health this week reminded all citizens to have their mobile X-ray unit visit at the Health Center on Sun Street Monday.

Persons over 20 who have not had a chest x-ray within the past year are eligible.

The state department of health unit will be in operation from 10 a.m. to noon and from 1 p.m. to 3 p.m.

Senator Clements on the program
Collier Cornette
Master of ceremonies
A. B. Chandler
... seeks third term
Harry Lee Waterfield
... he's running mate
Mack Walters
heads state campaign

It's sumpin' worth reading
CLAIR SPROUT...
And His Friend, **TIMOTHY TUGMTOWN**...
... Sez
A regular feature in this newspaper.
Clair says this week that a tee-pee debate between the "Hopkinsville Hornet," "Woodford Warrior" would make the "Louisville Lip" look like a cleft mate.
Truly, one of the most interesting newspaper appearing in any newspaper.

WANTED

Classified Advertising Rates

No Classified Ads Accepted After 12 Noon Tuesday
 Per word, first insertion 5¢
 Per word each subsequent insertion 3¢
 Minimum charge (first insertion) \$1.00
 Minimum charge (each subsequent insertion) 50¢
 Display Classified Advertising, per inch 25¢
 Entered as Second Class Mailing Matter at Post Office - Morehead, Ky.

FOR SALE
 7-Room modern residence; 13-room apartment house (six apartment buildings); Main Main Street, Morehead, property owned by Earl Caskey heirs. Lester Caskey, phone ST-4-4212, Post Office - Morehead, Ky.

FOR SALE
 One Vesta gas range with automatic controls; 3 extra diaphragm chrome finish; 2 extra levers; James electric dishwasher; 1 foot panel bed, twin size, bed springs, etc. Earl Young, phone ST-4-5122.

FOR SALE
 Pioneer laundromat. For details phone SH-9900-3-9103, West Liberty, Ky. c-13

USED CARS

'59 CHEVROLET STATION WAGON, TURBO GLIDE, 6-CYLINDER
 '58 FORD 2-DOOR SEDAN, 6-CYLINDER STANDARD

'57 CHEVROLET 4-DOOR SEDAN, POWERGLIDE, 6-CYLINDER
 '57 DeSOTO 4-DOOR SEDAN, AUTOMATIC TRANSMISSION, POWER BRAKES AND STEERING

'56 CHEVROLET STATION WAGON, POWERGLIDE, 6-CYLINDER
 '56 CHEVROLET 4-DOOR SEDAN, POWERGLIDE, 6-CYLINDER

'56 CHEVROLET 2-DOOR SEDAN, 6-CYLINDER, STANDARD
 '56 PONTIAC STATION WAGON, AUTOMATIC TRANSMISSION, AIR CONDITIONING, POWER BRAKES AND STEERING

'56 FORD 2-DOOR SEDAN, FORDAMATIC
 '55 PONTIAC 1-DOOR HARDTOP, AUTOMATIC TRANSMISSION
 '55 FORD 4-DOOR SEDAN, FORDAMATIC

'54 FORD 2-DOOR SEDAN, FORDAMATIC
 '53 CHEVROLET 4-DOOR SEDAN, POWERGLIDE
 '53 PONTIAC 4-DOOR SEDAN, AUTOMATIC TRANSMISSION
 '50 CHEVROLET 4-DOOR SEDAN, STANDARD

USED TRUCKS

'60 CHEVROLET 1/2-TON PICKUP
 '57 FORD 1-TON DUAL, FLAT
 '55 CHEVROLET 1/2-TON PICKUP
 '51 CHEVROLET 1/2-TON PICKUP
 '51 CHEVROLET 1/2-TON PICKUP

All Used Cars Are Checked for Alignment on the New John Bagnor Visuometer!

Midland Trail Garage

"Pioneers in Rowan County Transportation"

Political Announcements

DEMOCRATIC PARTY
 Primary Last Tuesday in May, 1962

FOR COMMONWEALTH ATTORNEY
 (Rowan, Bath, Montgomery and Menifee Counties)
 ELIJAH M. HOGGE

FOR REPRESENTATIVE
 (7th District - Rowan and Rowan Counties)
 MELVIN "PROSITY" HARDIN
 ALLIE W. YOUNG, JR.

FOR CIRCUIT JUDGE
 (21st Judicial District - Rowan, Bath, Montgomery and Menifee Counties)
 JOHN J. WINN
 JAMES E. CLAY

FOR CIRCUIT COURT CLERK
 WATHAN ARMSTRONG

REPUBLICAN PARTY

FOR CIRCUIT COURT CLERK
 W. H. "HERB" BRADLEY
 LOTTIE M. POWERS

FOR CIRCUIT JUDGE
 (21st Judicial District - Rowan, Bath, Montgomery and Menifee Counties)
 JOHN J. WINN
 JAMES E. CLAY

REAL ESTATE

Alpha Hutchinson
 See Our Sales List For A
 • HOME
 • BUSINESS PROPERTY
 • FARM
 Licensed and Bonded Real Estate Broker

Authorized Mortgage Loan Broker For The Prudential Insurance Company of America.
 Phone ST-4-5305
 Morehead, Kentucky c-12

COMPLETE WATER SYSTEM SUPPLIES

Flushing farm pond filters; water pumps and chlorinators; plastic pipe and fittings.

PERK'S ROWAN HEATING & PLUMBING CO.

Need Special Opportunity
 Need Spare Time Salesman For NATIONALLY FAMOUS
Olson Rug Company
 In and around Morehead
 Should have car. Experience not necessary. We furnish leads. WRITE giving complete details including age, marital status, experience, etc.
 Address letter to:
 R. C. Alworth
 OLSON RUG CO.
 2809 N. Pulaski Rd.
 Chicago 41, Illinois p-12

YOUR HEADQUARTERS FOR UPHOLSTERY MATERIALS
 Naughly leatherette and Nylon in all beautiful colors including white. Below wholesale. Ladies Discount House, 2 miles from Flemingburg Road. Phone ST-4-5057. Open 7 days week. Wholesale and retail. c-11

INCOME TAX SERVICE
 Professional bookkeeping and tax service. Office of Accounts, McKinney Office Building, opposite Morehead Post Office. Phone ST-4-7138.

ELECTROLUX CLEANER
 Completely reconditioned and guaranteed. Like new. Has complete set of new cleaning attachments and new hose. \$45.00 R.O. terms. Phone ST-4-5772. c-12

'Keep Quality Up'

Some Tobacco Price Props To Be Cut

Price supports on low quality tobacco will be cut sharply this year, the Department of Agriculture said last week in Washington. The department's statement, however, apparently applied primarily to flue-cured tobacco. It was unclear whether burley supports will be revised on a similar basis.

The announcement apparently reflected a decision to deal directly with the controversial sucker-control chemical, M330. The National Tobacco Advisory Council has recommended that tobacco treated with the chemical be sold at half the rate for untreated tobacco.

Last week's statement, however, indicated that the use of M330 will be considered only insofar as it affects the visible quality of the leaf.

Notice Of Public Hearing

All interested persons and parties are hereby notified that the Board of City Council of City of Morehead, Kentucky, will, at its regular meeting at City Hall, at hour of 7:15 P.M. on Tuesday the 5th day of April, 1963, conduct a public hearing on a petition and proposal to rezone the area described as from a Residence District to that of a General Business (B-1) District, and at the same time place the public is invited to be heard and said areas now described as follows: "That portion of land or area bounded on the South by Second Street; on the North by Third Street; on the West by Tipton Avenue; and on the East by College Boulevard, presently in the City of Morehead, Ky. c-12

Notice To Creditors

Notice is hereby given that the undersigned has been appointed executor of the estate of Robert M. Muters, deceased, and all persons having claims against the estate of said Robert Muters, deceased, will please present same, properly itemized, and all persons who said estate will please settle same with either of the undersigned on or before May 27, 1963.

Harris L. Kitchen, Executor, 890 Winchester Avenue, Ashland, Kentucky

State Forest Timber For Sale

LOCATION AND AMOUNT: All the timber marked for cutting on an area embracing about 288 acres within the Tugay State Forest in Compartment A - Logging Champs 4, and Compartment B in Cave Branch District, Carter County, W. Va. A map of the sale area can be obtained upon request. An estimated 3271 trees more or less are marked for cutting, and contain an estimated volume of 665,127 board feet. This volume is not guaranteed, but is the result indicated by tree measurement and is final for this sale. All timber is offered "where is and as is" without recourse.

MINIMUM ACCEPTABLE BID: The minimum total lump sum acceptable bid for this sale is \$9,295.00.

DEPOSIT: Each bid must be accompanied by a check, money order, or cash in full, which check in the amount of \$1,500.00 payable to the Kentucky Division of Forestry, to be applied to the purchase price upon payment on the purchase price, refunded, or retained in whole or in part as liquidated damages according to conditions of sale. The successful bidder shall pay half of the purchase price upon award of the contract.

FINAL DATE OF BIDS: Sealed bids will be received by the Division of Forestry, Box 358, Morehead, Kentucky, up to 11:00 a.m. (EST) on April 16, 1963. All sealed bids will be opened at 11:00 a.m. (EST) on April 16, 1963. All bidders are invited to attend the opening of the sealed bids. The right to reject any and all bids is reserved.

FURTHER INFORMATION: Before bids are submitted, full information concerning the timber and conditions of sale, submission of bids, etc. should be obtained from the Director, Kentucky Division of Forestry, Frankfort, Kentucky, or the District Ranger, Kentucky Division of Forestry, Morehead, Kentucky. A conducted inspection of the sale area will be held on April 2, 1963. Interested persons may meet at the District Forester's office in Morehead, Kentucky, at 9:00 a.m. (EST) for

AUTO PARTS

NEW AND USED

700 CARS FROM WHICH TO CHOOSE -
 NEW ROCKER PANELS - BODY PLASTIC RECHROMED BUMPERS - NEW TAIL LIGHT LENSES - REBUILD GENERATORS, STARTERS AND BATTERIES.
 IF YOU NEED A PART, CALL US
 Why not trade with Earl Whisman?
 Most Everyone else does.
 RAY GOODPASTER, Parts Manager

WHISMAN AUTO SALES

Phone 392 J Mt. Sterling, Ky.
 "Located in Downtown Hope, Ky."

We're Now Open For Business In New Location

(Formerly Brown's Garage)

Watch For Grand Opening

Coming Soon

Hold Your Catalog Lucky Number Tickets Until April 1

As Numbers Will Be Posted Then In New Store

Buy Where Quality Is Known

Firestone

MOREHEAD HOME & AUTO SUPPLY

Main St. Morehead

Volume Makes The Difference!

Trades Are Coming In Fast - Before You Buy Shop The Big Lot For Your Best Buy in A Fine Used Car!

1959 Rambler
 4-Door with automatic transmission, power steering, power brakes, radio and heater, new rubber, Sharp car. . . at wholesale.
 \$1,095.00

1957 Mercury
 2-Door with automatic transmission, radio and heater. . . is giving it away.
 \$645.00

1958 Mercury - 2 -
1955 Plymouths
 - Your Choice -
 \$795.00 \$125.00

1957 Ford
 Custom 300, 4-door, V-8, standard shift. Has new motor. Real buy.
 \$695.00

1948 Jeep
 4-wheel drive with excellent rubber and tires; mechanical condition.
 \$395.00

Trade Your Car In - It's Worth More At . . .
 - THE BIG LOT -

MOREHEAD MOTOR SALES

U.S. 60 EAST - MOREHEAD, KY.

PUBLIC SALE

Tobacco storage warehouse built for storing hoghead tobacco. Size 347 ft. long by 165 ft. wide.

This building has galvanized steel siding, built up roof and wood framing.

Suitable for conversion to lease leaf tobacco auction sales warehouse, or for storage of tobacco, hay or other bulk material.

AUCTION SALE

2 P.M. SATURDAY, MARCH 23

Terms of sale of the building, out of the weather. TERMS OF SALE CASH. 60 Days for removal of building from site. May be inspected any time. Phone MR. PAT PFEFFER, Maysville 564-551.

BROWNING MFG. CO.

Maysville, Kentucky

FOOD SAVINGS on FAMILY FAVORITES

- LADY BETTY CUCUMBER WAFERS 15-oz. **19¢**
- KRAFT MAYONNAISE Qt. **69¢**
- BLUE CHEER Giant Size **69¢**
- NEW CRISCO OIL 38-oz. **69¢**



- IGA ELBOW MACARONI 12-oz. Pkg. **2 for 29¢**
- STRIETMANN CHOCOLATE FUDGE COOKIES 1-lb. Bag **3 for \$1.00**
- STRIETMANN VANILLA CREME COOKIES 1 1/4-lb. **39¢**
- WALDORF TOILET TISSUE 10-Roll Pack **79¢**


Maxwell House

COFFEE

Regular Or Drip Grind

Limit One With \$5.00 Order

1-LB. CAN **39c**



CAMPBELL'S **Pork & Beans** **10¢**
1-lb. Can

IGA DELICIOUS **Apple Butter** **10¢**
12-oz. Jar



CAMPBELL'S **Tomato Soup** **10¢**
10 1/2-oz. Can

VELVEETA

Kraft **CHEESE SPREAD**

Save 26¢

2-LB. LOAF **69¢**

- HUNT'S PEACHES No. 2 1/2 Can **4 for \$1.00**
- LIBBY BARTLETT PEARS No. 2 1/2 Can **2 for 69¢**
- ROYAL GUEST FROZEN FRENCH FRIES 9-oz. **10¢**

THIS MONTH'S IGA SPECIAL **NEW!** Space-Saving **SALAD CHEF** **\$7.99**
*VACUUM BASE (No Clamps) REGULAR \$10.95 VALUE



For professional salads! Opens a new world of imaginative dishes.

- ROYAL PUDDING Vanilla, Chocolate, Butterscotch **5¢**
- STAR KIST CHUNK TUNA **4 for \$1.00**
- FULTON FROZEN SALMON CROQUETTE 6-Pack Box **59¢**

BLEACH

Roman **Cleanser**

QT. **10c**

Grapefruit

Rich in flavor, rich in vitamin "C" - a refreshing, juicy treat. Each...

White Or Pink

49¢

5-lb. Bag

Leg of Lamb

For a delightful (and delicious) change, serve a TableRite Leg of Lamb Roast with mint sauce. You'll enjoy a delicate, distinctive flavor and tender, succulent goodness that can't be beat!

59¢



- RED RIPENED TOMATOES 5 lb. Box **89¢**
- MACKINTOSH APPLES 6 lb. Bag **49¢**
- LOUISIANA YAMS lb. **10¢**
- YELLOW ONIONS lb. **5¢**

Allen's lb. **IGA** **FOODLINER**
8-6 Mon.-Thurs. 8-8 Fri.-Sat.

- SWIFT'S LINK SAUSAGE lb. **39¢**
- EDWARD'S SAUSAGE 2 lb. Bag **89¢**
- TABLERITE BACON 2 lbs. Thick Sliced **89¢**
- TABLERITE CANNED HAM 6 lbs. **\$4.59**

Clearing Out Deadwood

State's Old Records To Be Moved Into Storage Soon

Kentucky's crowded state government offices will begin this summer to clear away thousands of cubic feet of seldom-used old records, now cramp the available filing space.

Finance Commissioner David H. Pritchett said the Commonwealth will gain an immediate savings of \$1.5 million as a result of the more economical management of records.

Pritchett said much of the saving will result from moving the old files of state government records to a low-cost storage unit, to be called the State Archives and Records Center. The state already owns the needed building, an old hemp-processing plant located west of Frankfort on the Leestown Pike.

Charles F. Hinds, director of the State Archives and Records Service, said the new Records Center location will have ample space to serve state needs for over 10 years.

The center will be equipped with 12-foot stacks of metal shelving which can be extended higher as the need arises. The records will be kept in one-cubic-foot cardboard boxes, a method effectively tested by the federal government, other states, and many large industries, Hinds said.

Nearly half of the state's papers can be removed immediately to low-cost storage, freeing thousands of expensive metal filing cabinets for current records, Hinds pointed out. The boxes and shelving cost a fraction by comparison, Hinds said, and use space more efficiently.

Transfer of records will also reduce the state's needs for non-employees who attend to non-current records, he said. These and other clerks will be free to work on current assignments, he said.

Records of lasting value will be transferred to the archives section for permanent safekeeping. Archives will be stored in small protective containers in an area open only to the unit's staff, and kept under strict control, Hinds said. Copying machines can be utilized when information is required from an archive, Hinds said.

The Records Center will require only a small staff of "records retrievers" to locate needed documents, Hinds said.

The center will provide office space for the Archives and Records Service staff (now located in the State Capitol Annex), a reference room for researchers, a central service for state micro-filming needs, and a paper shredding unit for disposable records. Surplus paper will be baled and sold, Hinds said.



NEW SCHOOL FOR BLIND BUILDING in Louisville will be constructed by Garst-Reece Construction Co., Louisville, bid leader at \$607,847 for the classroom and administration building to be built near the 108-year old, five-story main building. The new structure will be three stories high, with 28 classrooms, an industrial arts shop, a home economics suite, library, offices, students' and teachers' lounges and six tuning booths for music students. The old building will eventually be razed to make room for future construction.

REGIONAL CAMPUS

Strong Library Collections Add Strength To University

By WINFRED L. GODWIN
Director, Southern Regional Education Board

(Editor's Note: Second in a series of columns about university libraries in the South, their collections, their financing and the modern technology which assists in accumulation of man's knowledge.)

The Confederate States of America wrote their original Constitution on a long parchment scroll, 12 feet in length and 28 inches wide. During the War Between the States, the Constitution was moved according to the shifting fortunes of the Southern army and Confederate administration.

Today the Constitution scroll rests in the library of the University of Georgia at Athens, with other early documents of state from Georgia and the Southern region.

In many universities of the South, their library collections and rare holdings add strength and unusual interest to the curriculum and academic program of the institutions.

When the new University of South Florida at Tampa was still on the drawing boards, the first person President John Allen appointed to his staff was a director of libraries, because the university would be planned around the library.

Rare Books

Among the library's current holdings are rare books in the first English edition of the story of the invasion of Florida published in London in 1688. The library also owns "Brevis Narratio," the original narrative of France's second expedition to Florida published in Latin in Frankfurt, Germany, 1591.

Housed in the Libraries of Congress at Washington, the University of California and Florida State University, are the last three remaining copies of the original printing of the "Book of Nonense," by Edward Lear. One hundred years ago the American made his first appearance in the United States between the covers of that book.

Its author, an English post-artist of the nineteenth century, later made himself immortal with illustrated editions of "The Owl and the Pussy-Cat," "The Jumblies," and "The Yngy Bonye Boy."

Valuable Research Sources
The original is part of FSU's extensive Childhood in Poetry Collection of poems for and about children. The collection is a valuable research source for students of the humanities, and education at all many levels.

Rare folklore of the Ozarks is preserved for posterity in some 6,000 books, manuscripts and other materials housed in the library at the University of Arkansas. Included in the collection are 100,000 feet of tape-recorded interviews

Collection of Letters

The University of South Carolina has received a group of 40 unpublished letters written by John C. Calhoun between 1820-41 for its library collection. The letters were written to Samuel D. Ingham, a Pennsylvania congressman and Secretary of the Treasury under President Andrew Jackson. The letters shed new light on the relationship of the two men during Calhoun's career as Secretary of War, the 1864 presidential campaign, and the break between Calhoun and President Jackson.

Since Castro's revolution in Cuba, the University of Miami library has become a leading repository of books and publications from Cuba, among them the original records of the City of Havana for many years. Other new acquisitions include first editions of all Longfellow works, and six Thomas Jefferson letters.

These are but a few of the treasures stored in university libraries of the region for the use and enjoyment of students, faculty and the public.

Celebrity Series Presents Kentucky Philharmonic

The Civic Culture Series will present the Central Kentucky Philharmonic on April 2 at 8 p.m. in Morehead State College's Student Auditorium. Under the leadership of Robert King, this 65 piece orchestra will present an evening of symphonic music.

The Central Kentucky Philharmonic is made up of faculty and students from the music departments of colleges and high schools in Central and Eastern Kentucky. Morehead State has six representatives to the Philharmonic.

From the faculty of the music department are Messrs. John Stecker, Alex Lesueur, James Pascoe, and Fremont Besmer. From the student body are Gene Browning and Robert Marshall.

RUFFY TWINS

SURE HOPE OUR TV MAN HAS A POLICY WITH

Wolford Insurance Agency
Phone State 4-4494
George Cuddill Bldg. Morehead, Ky.

This Column Will Answer Any Question You May Have Concerning Insurance . . .

Through this column each week we will attempt to answer any questions you may have about insurance. We invite your inquiries and will endeavor to answer any question you may have about any type of insurance: life, health, home, auto, etc. Let us hear from you!

FOR FURTHER INFORMATION — Contact —

C. Roger Lewis
Insurance - Equalizer Auctioneer
PHONE ST 4-5333
MAIN ST. - MOREHEAD

Sallee And Brown Boost Morehead's Golf Outlook

With the loss of Morehead State College's number one and two players off of last year's squad, coach Mike Dudley looks to a promising crop of new try-outs to try and better the Eagles' mediocre showing of last season. Dudley was very pleased with the turn-out this year as 17 hopefuls reported at the team's first meeting.

With the graduation of John "Cotton" Galloway and transfer of Charles Traxell, Eagles links men are hurting for the one-two punch which Galloway and Traxell provided.

Expected to be of some help this season is last year's No. three player, Ron Sallee. Sallee showed consistency all season and many times pulled out victories while playing in the underdogs role.

Also expected to help out considerably is Tom Brown, a sophomore from Ohio.

There are several freshmen who show promise of pushing Sallee and Brown for a starting berth.

THEY COME AND THEY GO, but since 1934 you've been able to depend on McBrayer for honest values and good service. Your McBrayer's Self-Serve Variety Stores, pledges themselves to even greater effort for fair prices and better service.

PRICE PLUNGES YOUR V STORE

AQUA NET HAIR SPRAY
RAYETTE \$2.00 SIZE
PROFESSIONAL HAIR SPRAY
WAY OFF PRICE **99¢**

CANNON TERRY TOWELS
A ASSORTED TOWELS TO BAG
84¢
BAG OF 6
13 x 16 & LARGER
HEMMED
BONIFUL BARGAIN

PLASTIC ALL PURPOSE SERVER
For Bread Slices, Fruit, Flowers, etc. Unbreakable Poly
33¢
THIS IS VALUE

ALL PURPOSE MIRROR
14" X 50" DOOR MIRROR
\$288 REG. 3.98
20" AROUND MIRROR
\$766 REG. 2.49

McBRAYER'S, INC.
Morehead, Olive Hill, Vanceburg, Flemingsburg And West Liberty

You Are Cordially Invited To Attend

PAINT DEMONSTRATION
Saturday, March 30th
From 8:00 A.M. Till 8:00 P.M.

Representatives Of The
Glidden Paint Co.

Will Demonstrate Their New

- ★ **Spred Satin**
New Interior Homogenized Paint
- ★ **Polyurethane Floor Finish**
- ★ **Spred House Paint**
For Outside Use

FREE COFFEE AND DONUTS Will Be Served! Plan Now To Attend

Look what happens with **NEW SPRED SATIN** it's **HOMOGENIZED!** The easiest wall paint to use

NO TEDIOUS STIRRING
A couple of stirs, it's ready to use!

CLINGS TO BRUSH OR ROLLER
No messy drippings or brush marks. Covers better than ever.

USE ON WOODWORK, TOO
Dries in 20 minutes. Resists water, stains, grease, in kitchen and bathroom.

EASIEST FLOWING ON
Paint walls and ceilings fast with roller or brush.

White Lumber Co.
ST 4-5588
U.S. 60 EAST MOREHEAD

McCULLOCH BP-1

A TOTALLY NEW CONCEPT IN CHAIN SAWS

Balanced piston engine cuts vibration □ Automatic chain sharpening □ Automatic chain and bar lining □ Self-carry carburetion □ Choice of gear ratios □ Trouble-free ignition □ New Auto-Mac chain □ Weighs only 18 lbs. — has bar and chain — plus a host of other new features.

SEE IT TODAY . . . AT
MONARCH Supply Store
MOREHEAD, KENTUCKY

AT **LITTON FORD SALES**
Flemingsburg, Kentucky

● Guaranteed A-1 Used Cars ● Your Biggest Ford Dealer For Miles Around
● Locally Owned — New Car Trade-Ins ● Check This List Before You Buy

SALE! SALE! SALE!

Bring The Family — Buy A Bunch

'62 CHEV convertible, 327 engine, 4-speed, standard shift \$2,795	'59 MERCURY, 4-door, P. S., P. B., automatic \$1,195
'62 FORD convertible, 406, overdrive \$2,895	'59 PLYMOUTH, V-8, 2-door automatic \$895
'61 FORD 500, 4-door, automatic \$1,795	'59 CHEV, 2-door, 4-cylinder, stick \$895
'61 FORD FALCON, 4-door, stick \$1,295	'56 CHEV, 2-door, 4-cylinder, stick \$495
'61 CHEV. CORVAIR, 2-door, stick \$1,295	'58 PONTIAC, 4-door, P. S., P. B. \$695
'62 FORD FALCON, 2-door, bucket seats, automatic, new tires \$1,895	'55 PONTIAC, 2-door, automatic \$395
'59 FORD, V-8, 4-door, heater, auto. \$1,295	'58 MERCURY, 4-door, P. S., P. B. \$795
'58 FORD, V-8, 4-door sedan, auto. \$895	'58 PLYMOUTH WAGON, 2-door, automatic \$395
'57 FORD 500, 2-door, heater, auto. \$895	

'54 CHEVROLET 2-Door, 4-cylinder, stick	'56 FORD 2-Door, V-8, Standard
'54 FORD Hardtop, V-8, Automatic	'55 CHEVROLET 2-Door, automatic
'53 CHEVROLET 2-Door, standard shift	'54 FORD Standard Shift
Buy All —	Buy All —
3 for \$395.00	3 for \$695.00

Ask For ART LITTON
GO-GO-GO to LITTON FORD SALES
Open 8 Till 8 Thurs. - Fri. - Sat. - Flemingsburg, Ky.

Society

Laura Prince Has Birthday Party

Mr. and Mrs. Jim Prince, Wilson Avenue, were hosts to the first grade group of Breckinridge Training School for a party Tuesday afternoon at the home of Mrs. Roy Corstie—for the regular birthday of their daughter, Laura Louise.

The twenty-seven guests were entertained by Mr. Tom Young who performed tricks of magic and showed an antique photograph, foreign dolls and his dancing forelegs.

Second Child Born To Mr. and Mrs. Charles C. Alley

Mr. and Mrs. Charles C. Alley, Xenia, O., are welcoming their second child, a son born Mar. 20. The baby weighed seven pounds, ten ounces on arrival and has been named William Horton. He has a little sister, Mary Aleta.

Mrs. Alley is the former Miss Mary Ella Moore, daughter of Mr. and Mrs. W. C. Moore of Isonville, Mr. and Mrs. Horton Alley, Farmers, are the baby's paternal grandparents.

Chi Omega 'Eleusinia' To Be Held March 30

Lexington alumnae of Chi Omega will sponsor the annual spring "Eleusinia" Saturday, Mar. 30, for all alumnae living in Kentucky and active chapters at the University of Kentucky, University of Louisville and Transylvania College.

Registration will be held from 11 a.m. to noon at Holiday Inn, Lexington. Reservations must be made by Monday with Mrs. Howard E. Taylor, 418 Culpepper Road, Mrs. Gerald Cashman, 270 Idle Hour Drive, Lexington.

Methodist Women Meet Last Thursday

The Woman's Society of Christian Service of the Morehead Methodist Church met Thursday evening in the church parlor for the regular monthly meeting.

Mrs. Richard Maybaw, leader of the program, gave the meditation. Assisting with the program on work of the National Council of Churches were Mrs. William Owsley, Mrs. Charles Apel and Mrs. Glenn Lane.

Hostesses for the evening were Mrs. Keith Huffines, Mrs. Dittie and Miss Clara Williams.

Return Home From Florida Vacation

Mr. and Mrs. Fred White returned home this week after vacation in Florida. They spent some time in Dayton Beach and visited at Lakeland with Mrs. and Mrs. Willie Eiam, former Morehead residents.

Mr. and Mrs. White have as their guests this week, Mr. and Mrs. Jim Ely and daughter, Dana Ann of Ocala, Fla. Mrs. Ely is the former Miss Virginia Eiam.

Baptist Circle Met Last Week

The Maggie Hogue Circle of the Women's Missionary Union of the First Baptist Church met Thursday afternoon at the home of Mrs. Roy Corstie—for the regular meeting.

Members attending were Mesdames Mary Sluss, Nancy Reynolds, Sylvia Carroll, Roy Fouch, Mrs. Caudill, C. E. Eby, Charles Bishop, Arbie Young and Alvin McGary.

Johnston 4-H Club Has March Meeting

The Johnston 4-H Club met Mar. 14 for the regular monthly meeting with County Agent Adrian Razor talking to the group on 4-H activities for the year.

Following the program, Judy Caudill led the members in singing. Jimmy Butler had charge of the recreation period.

HomeMakers Guests of Mrs. Patton, Mrs. Wiley

Members of the Morehead Nest HomeMakers Club were guests Monday evening at the home of Mrs. Patton and Mrs. Wiley.

Mayme Wiley for the regular meeting.

The president, Mrs. Everett Praley presided and Miss Grace Crosswhite gave the secretary's report. A book report was given by Mrs. Garland Sheets, after which the current lesson was presented.

The hostesses served refreshments to Mrs. Praley, Miss Crosswhite, Mrs. Ann Ponik, Mrs. Charles Bishop, Mrs. Grace Apel, Mrs. Elizabeth Mayo, Mrs. Bea Patton, Mrs. Stella Patton, Mrs. Clara Robinson, Mrs. Virginia Rice, Miss Janet Boyd, home demonstration agent, and Mrs. Williams, a guest.

Son Born Saturday To Mr. and Mrs. Bradley

A son, Sanford Douglas Bradley, Jr., was born Monday at Morehead. The baby weighed eight pounds, one and one-half ounces on arrival at Dr. Louise Caudill's clinic.

Mr. and Mrs. Charles Riddell, RFD 2, are the baby's maternal grandparents. The paternal grandparents, Mr. and Mrs. Tom Bradley, also of RFD 2.

Mr. and Mrs. Bob Laughlin and Mr. and Mrs. Rex Chaney will be among those from Morehead attending the NCAA basketball tournament in Louisville over the week end.

Mrs. Clara Robinson returned home Friday from a few days visit in Louisville with her daughter, Mrs. Dovel Atchison, and Mr. Atchison. 11. For some time, Mr. Atchison's condition remains unchanged.

MANY ATTEND STATE BASKETBALL TOURNAMENT

Several from Morehead attended some or all of the games during the state high school basketball tournament in Louisville last week. Among them were Dr. and Mrs. J. K. Smith, Mr. and Mrs. J. B. Brown, Jr. and sons, Mr. and Mrs. Jack Helwig, Mr. and Mrs. and Mrs. Curt Bruce and son, Mr. and Mrs. Calla Coyler, Mrs. Eva Slane, Mrs. Vivian Herring, Mr. and Mrs. Hubert Allen and son, Leola, and Mrs. Claude Snelgar, Mr. and Mrs. Dwight Johnson, Mr. and Mrs. Creed Patton and family, Andre Bowne and Rick and family, Mr. and Mrs. Tom, Tom and Mr. and Mrs. Walter Carr and family.

Others were Mr. and Mrs. Paul J. Reynolds, Mr. and Mrs. Bob Day, Mrs. Jack Holley and family, Mrs. Arch Williams and family, Mr. and Mrs. Norman Robinson, Mr. and Mrs. Mildred Wells Sam Allen and Mrs. Geneva Meade.

GO TO OWINGSVILLE FOR CLUB'S CITY SHOW

Moreheadians attending the Woman's Club style show and dinner Monday evening in Owingsville were: Mrs. John Palmer, Mrs. Curt Bruce, Mrs. Denny Northcutt, Mr. and Mrs. Claude Brown, Mrs. Lester Hogge, Mrs. Myrtle Wolford, Mrs. Bob Laughlin, Mrs. Clay Snelgar, Mr. and Mrs. Mason Jayne, Mrs. Edith Crosley and Mrs. W. W. Wynn.

Mrs. Brown was one of the models in the style show.

Mr. George Hunt who has been undergoing treatments at the University of Kentucky Medical Center, Lexington, for the past two weeks, will be confined there indefinitely.

Mrs. Jack Helwig, accompanied by her daughter-in-law, Mrs. Jack Helwig, Jr., and Mrs. Helwig, Sr. who has been quite ill and is confined to a Huntington hospital.

Mrs. Adron Adron, president of the Kentucky Federation of Women's Clubs, left Monday for Western Kentucky where she will make a series of visits and speak to clubs in that area.

Mr. and Mrs. Henry Glover were Wednesday business visitors in Lexington.

Mrs. Laura Owens of Flemingsburg was the guest of Miss Hildreth Maggard.

Mrs. Andre Bowne left this week by plane for an extended visit where she will be the guest of her husband, Mr. and Mrs. Phil McBrayer.

Cpl. James Rice, recently promoted to the rank of sergeant at Castle Heights Military Academy, Lebanon, Tenn., after a visit with his parents, Mr. and Mrs. Jim Prince.

Mrs. J. L. Layne, accompanied by Miss Sylvia Horton, returned over the week end with her son, Bill G. C. Banks has returned home after an extended visit in his daughter and son-in-law's home.

Mrs. W. F. Sherrow was a business visitor in Lexington on Tuesday.

Miss Sharon Williams will leave Friday for New York where she will be employed. She and her mother, Mrs. Arch Williams spent Tuesday night in Kenova, W. Va. with her grandmother, Mrs. Walter Henry.

Mr. Walter Swift entered Mary Chiles Hospital, Mt. Sterling, this week and will be confined there several days. His niece, Miss Mildred Blair accompanied him.

Mrs. W. C. Lane spent Monday with her mother, Mrs. Drew Baptist Hospital, Lexington. She also visited with Mrs. Cray Friley and Mr. John Jones who are patients at the same hospital.

Miss Elizabeth Nickel, vice president of the State Republican Women's Club, will attend a statewide meeting in Louisville over the week end.

Mr. Forest Cornette who has been ill for some time, entered St. Joseph Hospital in Lexington, Monday.

Mrs. Edward Schmitt of Kansas City, Mo., is visiting here with her parents, Mr. and Mrs. Eldon T. Evans, 11, and Mrs. Schmitt will soon go to Tucson, Ariz. where he has been transferred.

GOP VICTORY IN 1944

William E. Miller, GOP national chairman, said a Republican president will be inaugurated in 1952. Miller scored the Kennedy Administration's handling of Cuba, foreign affairs and taxes, declaring desperate improvisations by the Kennedy government on every front are frightening to behold.

Everything we ever wanted in a Farm Loan...

we have in our LAND BANK LOAN

Federal Land Bank Association
Cattlettsburg, Ky.
Phone 759-5031

or
Mrs. Irene Cline
Salisburyville, Ky.
Phone F1reside 9-4752
(Residence SHarwood 3-7255,
West Liberty, Ky.)

Try These Recipes

These are two of the more than 200 recipes appearing in "Our Ways With Food," a 156 page publication of the Morehead Woman's Club. Copies may be ordered, at \$2.50 each (as long as supply lasts), from Miss Patti Babin, Morehead, Ky. Profits are contributed to St. Claire Hospital. The recipes have been prepared, and tested, at the best in the Morehead area over two generations.

PUDDING DIPLOMATS

3 egg yolks
1 cup sugar
3 cups table cream
1 stick of vanilla
Walter Carr and family

Soak crushed macaroons in sherry. Beat egg yolks with 1/4 cup of the pudding mixture over low heat and fold in. Dissolve gelatin with 1/2 cup pineapple juice and 1/2 cup apricot juice, stir and add to the egg cream mixture, pass through a sieve and let cool. As it thickens, add 1/2 cup of sherry. Decorate the bottom of a mould with candied fruit. Pour in some of pineapple chunks and apricots, a layer of custard, then a layer of macaroons. Repeat this until serving. Serve 12.

Mrs. John Sherman Cooper
10 N. Street
Washington, D. C.

PINEAPPLE CAKE

1/2 cup butter
2 cups white sugar
1 t. flour
5 egg whites
1/2 t. lemon flavoring
milk

Beat egg whites and add baking powder, salt, and sugar. Add flouring, add flour and milk alternatingly, beat well after each addition. Add 2 T. flour to drained pineapple, mix well then add to cake mixture. Fold in stiffly beaten egg whites.

Press pans by cutting waxed paper to fit two 8 inch layer cake pans. Grease bottom of pans only (how would you like to climb a greasy pole?) Place paper in pans, then turn so that both sides of paper is greased.

Divide batter into the two pans and bake for 25 minutes in a pre-heated oven. Cool 10 minutes in pans, then turn on cake rack and remove paper.

When cake is thoroughly cooled, frost with:
Fluffy Pineapple Frosting
Cream 2 T. butter and 2 T. Crisco. Add 1 (one) lb. package of confectionary sugar and 4 T. cream (heated). Add crushed pineapple and beat frosting right consistency to spread. Chopped pecans may be added.

Mrs. LeGrand Jayne (Mary Alice)
President, Morehead Woman's Club

Mrs. Mayhall, Razor Honored By Lions

Two prominent Moreheadians were honored last week by the Morehead Lions Club for their "contributions to community life."

Mrs. Mayhall was presented by the civic group to Mrs. C. C. Maguire and County Agent Adrian Razor.

Mrs. Mayhall has been an extensive worker as Red Cross Home Service Secretary, while Razor's participation in activities outside the normal scope of his job was the award.

The Lions Club gives the plaques annually in connection with the group's minutes. This year's banquet was held last Thursday and Friday in the Breckinridge Training School auditorium.

Six Breck students who gave up basketball trips to the state basketball tournament to take part in the minstrel, were also praised this week by Lions Club officials.

They are: Mary and Nancy Duggan, Jalah Hurt, Barbara Hubbard, Alice Barber and Hedy Kinser.

Advanced Training Given Army Pvt. Eldon Gray

Army Pvt. Eldon Gray, son of Mr. and Mrs. Charles Gray, Route 3, Morehead, completed eight weeks of advanced artillery training as a cadet at the Artillery and Missile Center, Fort Sill, Okla., Mar. 1.

Gray entered the Army in October 1942 and received basic training at Fort Knox.

The 19-year-old soldier attended Sandy Hook High School.

— OPENING SOON —

MOREHEAD BEAUTY COLLEGE

Fairbanks Avenue — Morehead, Ky.
— PHONES —
ST 4-4334 or ST 4-4257

SINGER COUPON SALE

A SINGER representative will be in Morehead and vicinity every Tuesday. Check desired service and clip coupon. Mail to SINGER SEWING CENTER, Winchester, Ky.

GENTLEMEN: I am interested in...

SERVICE ON SEWING MACHINE
 SERVICE ON VACUUM CLEANER
 LITERATURE ON NEW SINGER SEWING MACHINE
 LITERATURE ON NEW SINGER VACUUM CLEANER
 \$19.50 USED PORTABLE
 \$39.95 USED CONSOLE

NEEDLES OIL BELT

NAME _____ PHONE _____

ADDRESS _____

DIRECTIONS IF RURAL _____

Rowan Real Estate Transfers

(Mar. 14 - Mar. 18)

James H. White and Elizabeth White to Paul E. White and Anne White, 30 acres on North Fork of Triplet, Jan. 21.

Arvie Caudill and Delia Caudill to Frank Eden and Iva Lee Eden, 1/2 in West Morehead, Sept. 28, 1939.

Marriage Licenses

Allen S. McKinney, 40, and Shirley Stittam, 17, both of Morehead, Mar. 14.

Joseph Allan Mudd, 21, Morgantown, W. Va., and Shirley Jean Townsend, 21, Morehead, Mar. 16.

Albert Price, 19, Soldier, and Helen Smith, 18, Haldeman, Mar. 18.

Be Sure To Attend

OLDHAM'S

Spring Showing Of Outstanding New Fashions In: Double Knit Three Piece Costume SUITS

Beautiful New Showing Of Spring And Summer DRESSES

Attractive Styles In Spring COATS AND SUITS

Coat And Dress Ensembles

OLDHAM'S

MT. STERLING, KY.

Poll Of Libraries Scheduled In State Late Next Month

A poll on public library and bookmobile service, sponsored jointly by the Kentucky Department of Libraries and Kentucky Junior Chambers of Commerce will be completed by National Library Week, Apr. 22.

Kentucky's Library Week chairman, Dan Stewart, Jr., said distribution of the opinion questionnaire would begin about Apr. 1. He estimated that the state's 62 junior chambers of commerce would turn in some 25,000 completed questionnaires to the Department of Libraries for final tabulation.

Smartaire

FASHION IS A LOOK... NOT A PRICE... \$8.99

OF COURSE IT'S SMARTAIRE!
And no wonder! Smart dressmaker detailing, a walkable mid heel for fashion and comfort, and best of all a look that never betrays its tiny price!

CHAKERS TRAIL
THEATRE
MORHEAD, KY.

It's Amazing And Hilarious — See

PETER SELLERS

I LIKE MONEY

STARTING FRIDAY 5 BIC DAYS
THE GIANT STORY OF MODERN HAWAII

CHALTON HESTON
YVETTE HASTON
MIMETTE
GEORGE CHAKIRIS
FRANCE NUYN
DARREN JAMES DARREN

DIAMOND HEAD

ALINE MACHINON / ELIZABETH ALLEN
Walt Disney's Terrific "Son Of Flubber" Starts Fri., Mar. 29th

Division Chairmen Named For Easter Seal Campaign

Division chairmen for the Rowan County Easter Seal Drive, which began last Thursday, were announced this week.

Mrs. Merle Allen, co-chairman of the effort said these appointments have been made: treasurer, Mrs. Paul Outley; auditor, Robert Hall; publicity, Mrs. Rex Chaney; coin collectors, Katherine Hooper; skating party, Mrs. H. K. Taylor; and ball game collectors, Mrs. Jim Prince.

Mrs. Allen and Fens Moorefield are co-chairmen of the local effort. A feature of the drive will be the Kiwanis Club auction, from which half of the proceeds will go to the crippled children's organization.



THE SITE—This is the location where Morehead's 30 low-rent municipal housing units will be built. It is a six and one-half acre plot at the rear of the Morehead Grade School on Flemingsburg Road.

FLOWERS TALK

For anniversaries, birthdays, flowers express your sentiments perfectly. You'll find a FLORIST fast in the YELLOW PAGES, where YOUR FINGERS DO THE WALKING.



Latin Markets Eyed For State Livestock

The State is launching a new program designed to develop Latin American markets for sale of Kentucky livestock, according to State Agriculture Commissioner Emerson "Doc" Beauchamp.

Beauchamp has sent personal letters to 77 cattlemen and public officials in 17 Latin American countries inviting them to attend the first annual National Hoibstern Show and Sale set for Apr. 23 at the Kentucky Fair and Exposition Center in Louisville.

Beauchamp pointed out that Latin American countries will be purchasing purebred livestock in the United States as a result of President John F. Kennedy's Alliance for Progress program. Some of the funds made available for development in Latin America are earmarked for such purchases, he noted.

"These buyers are in the market and we want them to see at first hand the purebred cattle we have in Kentucky. We want them to have an opportunity to make purchases in Kentucky and to carry word back to their own countries of the fine cattle available here," Beauchamp said.

The agriculture commissioner said Latin American buyers will also receive personal invitations to attend the other purebred livestock shows in Kentucky.

Fifty head of Holstein cattle raised by the nation's top breeders will be featured at the Apr. 23 event.

Invitations were sent to prospective buyers in Puerto Rico, Uruguay, Venezuela, Argentina, Bolivia, Brazil, British West Indies, Chile, Colombia, Costa Rica, Ecuador, El Salvador, Guatemala, Mexico, Nicaragua, Panama, and Peru.

Art Dept. Holds Exhibit In Allie Young

An art exhibit consisting of 27 watercolors entitled "The City"—"Three Views" is to be shown the remainder of this month in the Morehead State College Art Department Art Gallery in Allie Young Hall.

These three views of the city were painted by John M. Angelini from Livingston, N. J.; Henry Gasser, Newark, N. J.; and Leslie Fielegel of Kew Gardens, N. Y.

"All three of these artists are outstanding in the field of painting and Gasser is noteworthy as he is a member of the National Artists Organization which is quite selective as it selects the top artists in the United States to belong to its organization," said Naomi Claypool, head of the art department at Morehead State College.

Markwell —

(Continued from page one) days in the county jail after entering a plea of guilty.

Three men indicted for storehouse breaking also entered pleas of guilty and were sentenced to a year each in the state penitentiary. They are Billie Freeman, Billie Hunter and Tandy Hunter, Jr.

In the other indictment returned, Esmond Lacy was charged for allegedly failing to comply with terms of a divorce judgment relative to support of infant children.

The case of Cleis Rice, who faced a grand larceny charge, was continued until the May term. Trial had been set for last Friday.

Easter Seal —

(Continued from page one) special classes, equipment purchases and operation of facilities. Local committees also furnished clerical assistance, transportation and lunches for patients attending clinics held by the Kentucky Commission for Handicapped Children.

"No other private agency in Kentucky offers so wide a program for those crippled by so many causes," declared W. T. Isaac, state chairman of the 1945 Easter Seal Campaign. The annual appeal, now under way, "deserves the generous support of all of us," he added. The drives ends Easter Sunday.

Sergeant From Rowan In Korean Training

Army First Sergeant Bobby J. Hall recently took part in Exercise Winterway II, a cold weather field training maneuver in Korea, with other members of the 7th Infantry Division.

The exercise was designed to test and improve the combat effectiveness of U.S. forces helping defend the Republic of South Korea.

Sgt. Hall assigned to Company B of the 4th Infantry's 2nd Battle Group, entered the Army in Aug. 1948 and arrived overseas on this tour of duty in May 1952.

The sergeant, son of Mr. and Mrs. Walter E. Hall, Route 3, Morehead, attended Haldeman High School.

ATTENTION Hard Of Hearing

Ray McKenzie will be available to give FREE HEARING TESTS in your home each Monday, Wednesday and Friday.

Ray has been studying hearing problems at the University of Kentucky for 2 years. In addition he has worked in Los Angeles, Calif. for the Veterans Administration fitting hearing aids and giving therapy to hard of hearing veterans.

Ray represents the MAICO HEARING AID CENTER, 122 N. Upper St., Lexington, Ky. For information of a FREE hearing test in your home write...

RAY MCKENZIE Morehead State College Box 405 Morehead Ky.

SAVE TWO WAYS AT SAVEWAY SUPER MARKET

Save on your groceries and Saveaway Bonus Bucks - You get Bonus Bucks with each purchase of \$1 or more - They are good for free Premiums at the store - Come see how you can save at Saveaway!



Regular Size

TIDE 19¢

Limit Of 2 With \$2.00 Order!

GRADE A MEDIUM

EGGS.. DOZ. 37¢



10-OZ. JAR INSTANT

FOLGER'S COFFEE 89¢

FROSTY ACRES

BISCUITS.. 6 FOR 39¢

THIFTWAY EVAPORATED

MILK..... CAN 10¢

FRESH TOMATOES LB. 19¢

CUBE STEAKS... EA. 10¢

HOME MADE

HAM SANDWICHES EA. 10¢

SLAB BACON..... LB. 29¢

ANGEL FOOD CAKES Ea. 39¢

MEDIUM SIZE IVORY SOAP ... 4 Bars 37¢

DEL MONTE TUNA FISH 4 for \$1.00

LARGE SIZE IVORY SOAP ... 3 Bars 51¢

12-OZ. LIQUID IVORY 37¢

HOME LAUNDRY SIZE DASH \$4.09

12-OZ. LIQUID JOY 37¢

REGULAR SIZE SALVO 43¢

12-OZ. LIQUID THRILL 37¢

QT. GLASSWARE DUZ 79¢

WE RESERVE THE RIGHT TO LIMIT QUANTITIES DUE TO SUPPLY PROBLEMS!

LIZ ABNER'S LIZ ABNER'S LIZ ABNER'S LIZ ABNER'S

MONDAY'S FAMILY NIGHT AT

LIZ ABNER'S

507 E. Main St. MOREHEAD, KY.

Kentucky's Most Interesting Family Restaurant

LIZ ABNER'S LIZ ABNER'S LIZ ABNER'S LIZ ABNER'S

Naturalizer

Fashionable Pump with the STRETCHABLE TOPLINE

Elasticized topline smartly collars this pump and gives greater fit...

fashionable snip square toe...

Air-foam cushioning too, for soft, soft comfort

\$11.98

MARTIN'S

DEPT. STORE

MAIN STREET MOREHEAD

Morehead News

Morehead, Kentucky, Thursday Morning, March 21, 1963

Students At RCHS Take 1st, 3rd In State Essay Event

Students at Rowan County High School have carried out two of the top three places in a state essay contest on the subject "How My Community Benefits From the Abilities of Handicapped Workers."

First place in the state event went to David Richardson, while third was taken by Brenda Arnett.

As a result, David and his English instructor, Mrs. Peggy Hagan have won an expense-paid trip to Washington, D.C., where David's entry will be judged against those from the other 15 states.

The national prize is \$1,000. First prize in the state is \$150. David's entry won a \$100 award and a \$25 bond.



David Richardson
... first in state

Mrs. Hagan, high state finishes are both David's and Brenda's. In 1959 one of her students, Margaret Deussen, won a \$100 award. In 1960, Wilma Crawford, Deussen's sister, won the first place winner in Kentucky.

The contest, sponsored by the President's Committee on the Handicapped and the Kentucky Commission on Employment of the Handicapped, has been held for 15 years. It is the only government-sponsored essay contest in the country by the National Association of Secondary-School Principals and the National Catholic Educational Association.



Brenda Arnett
... took third

Clipping examples of contributions made by contestants in the handicapped contest, both David's and Brenda's, are being distributed to various individuals in the public and private life in the schools who are efficient, capable citizens despite physical handicaps.

David, a son of Mr. and Mrs. William L. Richardson of Route 1, Morehead, is a senior at Rowan County High School. He is a member of the Beta Club, Future Teachers Club and the debate team. He was a runner-up for the National Council of Teachers of English award in 1962 and has won honors in three different events in the state speech festival. A member of the RCHS baseball team, he plans to play medicine.

Brenda is also a senior at RCHS. A daughter of Mr. and Mrs. Sherman Arnett, she is treasurer of the Beta Club, treasurer of Tri-Hi-Y.

PREPARE NOW for a lifetime profession. Barbers have nice working conditions, steady employment, good pay. Consider Lexington Barber College, where you have an air conditioned school, all new equipment, and two well qualified instructors. For information come in or call 523-2466. 171 E. High St., Lexington.

THE CHURCH OF CHRIST

Meets at
225 Second Street
Morehead, Kentucky

Sunday School 11:00 A.M.
Sunday Worship 10:00 A.M.
Sunday Evening 7:00 P.M.
Wednesday Evening 7:00 P.M.

DON FLATT, Minister
Hear "The Voice of Truth" over WMOR each Wed.—7:15 a.m.

IS YOUR WATER PUMP AS OUT OF DATE AS THIS CAR?

It is! Then it's time you installed a new GOULDS Water System.

EASY TERMS plus SERVICE

PERKS
(ROWAN HEATING & PLUMBING)
Flemingsburg Road Morehead, Ky.

High Masonic Officer To Visit Lodge Here

Kentucky's top Masonic officer will visit Morehead Lodge No. 654, P.E.M., next Thursday.

He is James W. Egan, grand master of the Grand Lodge of Kentucky, who will meet with the local lodge at 7:30 p.m.

Egan, who lives in West Liberty, was elected to Masonry's top position in Kentucky last fall.

Broiler Prices May Be Lower In 1963, Economists Say

The 1963 poultry forecast has been issued by Extension Service economists.

They see a chance of slightly lower prices for broilers, egg prices about the same as for 1962, and turkey prices above the 1962 general level.

Wilson Hourigan, economist who issued the forecast, says:

Fluoridated Water Tests Successful

Hopkinsville children who have been drinking fluoridated water since Aug. 1951, show 54 per cent fewer decayed, missing, and filled teeth than children of a nearby community without a fluoridated water supply, according to a survey conducted last year by the Christian County Health Department and the State Department of Health.

The survey also shows that 29.2 per cent of the Hopkinsville children showed no evidence of dental decay while only seven per cent of the children of the non-fluoridated area had no decay. The Hopkinsville children had nearly 30 per cent less missing permanent teeth than the children of the other community.

Broilers — Prices for the first quarter (through March) may be slightly lower than the same quarter of 1962, and probably will average out over 1963 at slightly lower than the 1962 level. Slaughter rates are up; competition from pork and beef, and a lower demand from foreign buyers may keep prices lower this year.

Eggs — Replacements are up five per cent which means younger layers and larger output per layer in 1963. This may cause egg production to be somewhat higher than 1962's levels.

Turkeys — There may be a small increase in 1963, and producers may go more this year to higher-weight turkeys. Prices for turkeys are still above average, which means producers may voluntarily hold back large lots of turkeys now, and are expected to be above the 1962 level.

\$4 Million Pact For Power Station Let By Cooperative

The East Kentucky Rural Electric Cooperative, with offices in Whitesburg, awarded approximately \$4 million in contracts at its regular directors meeting this week.

The contracts are for work related to the 100,000 kilowatt John S. Cooper power station construction at Burnside on Lake Cumberland.

The mechanical work in the power station was awarded to the Fuel Economy Engineering Corp., of Louisville. The contracts are presently on the site on other contracts previously awarded.

Robert C. Wilcox, a Buckton, O., company, previously awarded bidders on the steam generator. The contract was awarded the equipment erection contract.

The Elliott Construction Company of Omaha, Neb., will construct five substations. These will be located in Jackson County; Avon, Fayette County; Renaker, Harrison County; Lebanon, Martin County; and at Bonnierville in Hart County.

Morton, Combs Endorse 'One Great Hour of Sharing'

Governor Bert Combs and Senator Thurston B. Morton have given personal endorsement to the "One Great Hour of Sharing" appeal of Protestant denominations which will be responded to in churches in Kentucky and elsewhere in America Sunday, Mar. 24.

Also commended were the overseas aid appeals of the Catholics and the Episcopal, United Methodist and the United Jewish Appeal, a year-round effort with special emphasis at this time.

Through their programs of overseas assistance supported by the current One Great Hour of Sharing appeal, Protestant churches distribute food, clothing, bedding, medicine and self-help materials to millions of hungry and needy victims of war and political upheaval, of earthquakes, floods, typhoons and other disasters, and of chronic malnutrition and underprivileged are given relief and rehabilitation.

The "One Great Hour of Sharing" also makes possible assistance to overseas orphanages and hospitals, tubercular clinics, and other health efforts, and widespread projects of resettlement and rehabilitation for refugees.

More than 140 miles of 161,000 volt transmission line will be constructed under a contract awarded to Crawford Electric Company of North Pitt, N.C., for the line to be built under the contract included Turner-Beattyville, Burnside-Lebanon Junction, Burnside-Wade Creek Dam, and Avon-Reaker.

Additional contracts for transmission lines and work in Cooper Station will be considered in 1963, bringing the total work in progress to approximately \$25 million.

Hospital Expert To Study UMW E. Ky. Units

An authority on hospital operation will make a study of the four United Mine Workers' hospitals in Eastern Kentucky and make recommendations of possible ways of keeping them open. The union has announced its intention of closing the hospitals by July 1.

Dr. E. D. Rosenfeld, New York City, has been retained by the United Presbyterian Board of National Missions to make the study. The missions board hired Dr. Rosenfeld after agreeing to cooperate with Kentucky state government officials in exploring ways of solving the hospital problem. The hospitals are located in Hazard, Whitesburg, McDowell, and Middleboro.

Chasing People To Pay Them Is Way Of Social Security

A Morehead resident, Chester W. Caskey, has reason today to be thankful for the persistence of the Social Security Administration.

It is \$233 richer because of a check he recently received for back social security payments and he can look forward to receiving \$71 check each month for the remainder of his life.

Caskey is one of 250,000 persons throughout the United States who were contacted recently because their social security records indicated they were apparently eligible to receive social security benefits, but had never applied. Newly installed electronic equipment made it possible for these thousands of persons to be identified and contacted.

Caskey was first contacted by the Whitesburg office approximately last October. At that time he believed it was not eligible to receive social security benefits because of his income from rental property. However, he stopped in to see Ilean N. Sutherland, the social security representative at Morehead who told him that income from real estate rentals are not considered earnings for social security purposes, and that he was eligible to receive social security benefits even though he has the rental income.

Caskey does not like to be bothered by the amount of coverage required had been reduced by the 1961 changes in the law. A lady, past 80 years of age in Elliott County was in this category. She received more than \$500 in back payments, but like Caskey, lost some money by not inquiring sooner.

Thompson suggests that persons 82 or over follow Caskey's advice and contact the Ashland social security office. He noted that persons unable to visit Ashland may contact Sutherland, at the courthouse in Morehead each Tuesday at 10 a.m.

Others had inquired about their eligibility for benefits several years ago and had not heard that the amount of coverage required had been reduced by the 1961 changes in the law. A lady, past 80 years of age in Elliott County was in this category. She received more than \$500 in back payments, but like Caskey, lost some money by not inquiring sooner.

Fairs To Get Share Of New \$50,000 Fund

A total of 75 county and district fairs in Kentucky will share in the \$50,000 fund established by the General Assembly for aiding agricultural fairs in the state, according to State Agriculture Commissioner Emerson "Doc" Beuchamp.

The State funds must be used for premiums on crops, vegetables, live-performance and livestock races, such as sheep, hogs, cows, and similar farm animals, Beuchamp said.

He emphasized that State aid cannot be used to replace premium funds already being provided from local sources. The allocation of State money to any fair must result in an increase in the premium fund equal to or more than the State allocation, he said. Allocation is made on the basis of the amount of premium money paid in approved classes.

Beuchamp said the Fair Council, a public body set up by the State, is now acting on applications for aid to advance to each of the qualifying fairs 50 per cent of their total operating expenses July 1 or after the completion of a fair catalog. He said the remaining 50 per cent will be paid after Dec. 1, as fair reports are received by the Agriculture Department.

Beuchamp said no further applications for State aid may be accepted this year. He pointed out that no allocation can be made to a fair holding its 1963 meeting before July 1, the effective date of the County Fair law.

Historical Group Will Seek Assembly's Help

The Kentucky Historical Society plans to ask the state General Assembly to approve legislation for a preservation program for preservation of selected historical sites and buildings throughout Kentucky.

The Society's Sites and Sherries Committee is drawing up preliminary proposals to make the study a criterion for the selection of significant historical sites. Until such a program is adopted, the Society is urging communities in which they have historical sites designated to take steps locally for their preservation.

Early Diagnosis, Treatment May Save Cancer Patients

Breast cancer is the leading cause of death from cancer among women but the loss of life from this disease could be largely prevented.

Although 24,700 women will die from breast cancer in 1963, the American Cancer Society (ACS) said this week that 83 per cent of all breast cancer patients are cured when the disease is detected and treated while it is still localized. If the cancer has spread to other regions the chance of cure is only 48 per cent.

Flemingsburg Seeks 'Number One City' Title

Seven Kentucky cities are in competition to be designated "Kentucky's Number One City" for 1962 through the Kentucky Chamber of Commerce Community Development Program.

The winning city will be named Apr. 9 at the Awards Luncheon during the Kentucky Chamber of Commerce Annual Meeting at the Holiday Hotel in Lexington.

The seven towns are Barlow, Campbellsville, Flemingsburg, Liberty, Prestonsburg, Sturgis and Somerset, have all been declared winners in their own Congressional Districts, according to Harry Huebner, Lexington, president of the Kentucky Chamber of Commerce.

Seaman Daniel Owsley Is Submarine Crewman

Daniel B. Owsley, engineer second class, USN, son of Mr. and Mrs. William B. Owsley, Morehead, received the silver dolphins of a qualified Navy submariner, Dec. 14, while serving aboard the Polaris missile submarine USS George Washington.

The dolphin presentation, a milestone in the life of submarine crewmen, signifies a high degree of proficiency and understanding of submarine systems and operations.

STUCKY FUNERAL HOME

PHONE ST 4-4106 OR ST 4-4107

For your Belts Save Lives . . .

After added protection we have installed safety belts in our ambulances

LICENSED
LADY ATTENDANT

— Owned And Operated By —
M. M. (Red) Stucky - Betty Stucky

Hear And See Kentucky's Next Governor

HON. A. B. CHANDLER

Will Speak At
7:30 P.M.
IN THE
FIELDHOUSE

Morehead, Ky. Monday, March 25

This Is A Seventh Congressional District Rally

An Open, Factual Discussion On Local And State Issues . . .

In 1925 Kentucky was debt-ridden. Chandler was overwhelmingly Governor and saved the Commonwealth going bankrupt. In 1955, the people again elected Governor Chandler and he brought stability to State government. Now, in 1963 Kentucky has called on Gov. Chandler and Harry Lee Waterfield to stop the TAX, TAX, TAX and WASTE, WASTE, WASTE and SPEND, SPEND, SPEND destruction. Hear a great speaker, a great Kentuckian.

The Combs Administration will go down in history as Kentucky's . . . the taxpayer feels the bill while the Combs Administration continues to TAX, TAX, TAX . . . WASTE . . . WASTE . . . SPEND, SPEND, SPEND. In addition, the Combs Administration is best with KICK, KICK, KICK AND UNDER THE TABLE deals. Hear this discussed, along with state issues, when Gov. Chandler speaks Monday at Morehead.



Morehead's New Shopping Center GRAND OPENING SALE

2 Big Value Packed Days . . . **Friday And Saturday**
March 22, 23 . . . **FREE PRIZES!**

Morehead's Greatest Sales Event Starts Tomorrow — Friday, March 22nd — At Layne's Dad 'N Lad Store — Pierce's 5¢ & 10¢ Store — Western Auto Store — Burns' Dept. Store.

FREE REGISTRATION FOR OVER . . .

\$500⁰⁰ In Free Prizes Plus \$100 Gift Certificate

Register For These Prizes At Each Of Our Participating Stores!

Drawing For Prizes
Will Be Held
SAT., MARCH 23
4 P.M.

You Must Be Present To Win!

Winner Of Name The Shopping Center Contest
Thurs., March 28

— Door Crasher Prizes —

Given To First 100 Customers Friday Morning After The Official Opening At 8:00 A.M. The Four Stores Will Be Officially Opened By A Ribbon Cutting Ceremony By Hon. Eldon T. Evans, Mayor Of Morehead.

You Do Not Have To Make A Purchase To Register! Register At All Four Stores! Plenty Of Free Parking At Rear Of Building — Enter From Main Street Or Second Street.

ENTER NAME THE SHOPPING CENTER CONTEST

ANYONE CAN ENTER . . .

You do not have to buy anything to enter Name The Shopping Center Contest. All you do is pick up a card at any one of the four participating businesses — Burns' Dept. Store . . . Layne's Dad 'N Lad . . . Pierce's 5¢ & 10¢ Store . . . Western Auto Store — and write in the best name for the Shopping Center. The cards are in two parts — one part has a place for name and address and a number — the other part has a number on it. You separate the card, writing your choice on the card with only the number on it and drop it in the box and leave the other part of the card with your name and address with the store.

JUDGES WILL DETERMINE WINNER . . .

A group of judges will determine the winner after careful study of the hundreds of cards received. The winner will be announced Thursday, March 28. The Winner's Gift Certificate will be worth \$100.00 in merchandise at the four participating stores. Remember, the deadline for Naming The Shopping Center Contest is 8:00 P.M. Saturday, March 23. Entries received after this date will be disqualified.

— Free Door Prizes —

To First 100 Customers Friday Morning

- Include:
- 100 Lbs. Maxwell House Coffee
 - 100 Pcs. Men's Socks
 - 100 Ladies' Rain Hats

Plus Many Other Free Door Prizes



Plenty FREE PARKING In Our 80 Car Parking Lot

A Few Of The Specials From

LAYNE'S DAD 'N LAD STORE

Reg. \$28.95	Nunn Bush Shoes	All Reduced	\$14.99
Reg. \$5.00	Ban Lon Shirts	2 Days Only	\$2.99
Reg. \$5.00	Tapered Slacks	All Reduced	\$2.99
Reg. \$2.50	Beau Brummel Ties	Only	99¢
Reg. \$10.95	Sport Coats	Special	\$6.99

Top Specials From

PIERCE'S 5¢ & 10¢ STORE

50-Ft. Plastic	Garden Hose		88¢
Special Purchase	Birdseye Diapers	Doz.	\$1.79
Get Several Yards At This Price	Print	4 Yds.	\$1.00
7-Inch	Paint Roller And Pan	Complete	88¢
New Shipment	Parakeets	Only	\$1.98

Some Of The Specials At

WESTERN AUTO STORE

Reg. \$59.50	30-Gal. Automatic Gas Water Heater	\$39.95
Reg. \$69.95	40-Gal. Automatic Gas Water Heater	\$46.95
Reg. \$59.50	18" 20" 4-Cycle Huffy Power Mower	\$49.50
Reg. \$44.95	18" 2 Cycle Wizard Power Mower	\$38.88
\$124.50 Deluxe	3-HP Tiller	Briggs Engine \$99.88

BURNS' DEPT. STORE

Has Many Specials . . . Here Are A Few

All \$10.95	All-Weather Coats	Reduced To	\$7.95
All \$4.95	Ladies' Blouses	Reduced To	\$3.49
All \$4.99	Ladies' Shoes	Reduced To	\$3.50
All \$4.95	Skirts	Reduced To	\$3.50
	Jamaica Sets		\$1.00 Off Reg. Price

Many Other Specials Plus Store-Wide Discounts . . . Red-Hot Bargains On Both Floors During Sale . . . Bigger Savings . . . Better Service . . . Large Selection

BUY NOW AND SAVE

LAYNE'S DEPT. STORE Proudly Announces The
GRAND OPENING
 OF LAYNE'S
Dad 'N Lad Store

Located in the New Shopping Center Building in downtown Morehead... For the first time you can buy all brand new Spring and Summer Clothing for Men and Boys at Pre-Season Sale Prices... It will be easy to do in Layne's Dad 'N Lad FIRST BIG

Pre-Season Opening Sale
 Buy Now And Save At Layne's Dad 'N Lad Store

400 New Spring
 And Summer **20%**
SUITS Off Reg. Price



Dad 'N Lad has \$40,500.00 worth of Men's and Boys' Nationally Advertised Clothing on Sale. During this GRAND OPENING you will find such advertised brands as McGregor Sportswear, Manhattan Shirts, Curlee Suits, Rugby Jackets, Gunn Bush Shoes, Knox Hats, Jerk Socks, Swank Jewelry, Catalina Swimwear, Marx Haas Dress Slacks and H. I. S. Casual Wear.



2 Days Only
 Friday & Saturday
 March 22 - 23

20% off Everything On Sale!
 Nothing In Store Less Than
20% Off!

Here Are A Few Of The Specials

Teen's, Men's Polished Tapered SLACKS In handsome belt loop or straiten waist and model... Choice of Natural, Blue, Black, Grey, Olive, Pre-season special... \$2.99	New, Spring Corduroy SPORT COATS Reg. Price \$10.95 NOW \$6.99	New Short Sleeve Rugby Ban Lon SHIRTS Just arrived in Blue, Mint, Tan, Black, Olive and Powder Blue. Reg. Price: \$4.98 Opening Special \$2.99
Gunn Bush SHOES Reg. priced To \$28.95 Your Choice - \$14.99 2 Days Only	Men's New Spring Felt And Summer Straw KNOX HATS 1/4 Off Regular Price	Entire Stock Long Sleeve SPORT SHIRTS McGregor, Manhattan, Wings Reg. \$2.95 To \$6.95 1/2 Price

FREE PRIZES AT THE DAD 'N LAD
 • \$55.00 CURLEE SUIT
 • \$30.00 SPORT COAT
 • \$30.00 SWANK JEWELRY
 • \$25.00 MARX HAAS SLACKS
 Many Other Prizes Too
 Numerous To List Here...
 100 Pairs Men's Socks Plus
 Free Maxwell House Coffee

Free Parking At Rear Of Building

Layne's
DAD 'N LAD
 Located In New Shopping Center
 Open 8 Til 8
 Friday And Saturday

PIERCE'S Present Their
GRAND OPENING
SPECIALS

FRIDAY AND SATURDAY, MARCH 22 AND 23

FREE 100 PRS. FIRST QUALITY NYLON HOSE (For Ladies Only) GIFTS FOR EVERY MEMBER OF THE FAMILY

King Size TV TRAYS - Only - 99¢	CLOTHES DRYERS A Grand Opening Special \$1.99	20-Gallon CARBAGE CAN Get 2 At This Price \$1.99
10-Quart Galvanized PAIL - Only - 54¢	Plastic PILLOW COVER - Each - 37¢	Plastic Twin Mattress COVER - Special - 67¢
Ladies' New Spring And Summer BLOUSES - Only - 67¢	Rayon DUST MOP - Each - \$1.00	12-Quart Plastic PAIL - Save - 67¢
Large, Rectangular LAUNDRY BASKET Tremendous Savings \$1.00	Oblong, Plastic DISH PAN Low - Low Price 67¢	Spring Type CLOTHES PINS Get 2 At This Price 50 In Poly Bag 47¢
Plastic BREAD FRESHENER You Can't Afford To Miss This Sale 68¢	Ironing Board PAD AND COVER Two Days Only 67¢	100-Ft. Plastic CLOTHES LINE Special Friday And Saturday 66¢

This Is Just A Few Of The Many Bargains You'll Find At Pierce's During Their Grand Opening Sale!

Register For Valuable Door Prize
RCA RECORD PLAYER

Pierce's 5¢ & 10¢ Store

Located In New Shopping Center
 MAIN STREET - PLENTY OF FREE PARKING - MOREHEAD, KY.

Regional Speech Festival Will Begin At MSC Tomorrow

The School Services Department and Speech Department of Morehead State College will host over 250 participants in the Northeastern Kentucky Regional High School Speech Festival to-morrow and Saturday.

Friday's activities will begin at 8 a.m. with a day of debating, in which seven high schools will take part.

Saturday will find junior high school students competing in expository prose and poetry reading. For the senior high school students, there will be public speaking, oratorical declamation, expository prose, dramatic reading, poetry reading, extemporaneous reading, rapid speaking, discussion, and serious and humorous monologues.

At noon on Saturday, the guests will be host to the festival guests

at a luncheon in the Doran Student House.

Judging Events

Judging the activities for the two days will be faculty members of high schools and colleges from Ohio, West Virginia, and Kentucky plus members of the Morehead State Home and Debate group, who will gain speech experience by helping with the judging. Members from speech classes will act as timekeepers for the events.

On Saturday at 3 p.m., the winners of all events will be announced in Button Auditorium. These winners will represent their region of the state at the State High School Speech Festival in Lexington.

Nearly 7,000 Farmers Sign In USDA Plan

The U.S. Department of Agriculture reports that during the first sign-up period for the 1963 feed grain program, 6,867 Kentucky farmers had contracted to take part.

Base acreage involved is 154,108 acres, the USDA report said. This would include 103,850 diverted acres worth some \$2,441,638 in diversion payments.

Farmers have until Mar. 22 to join the program, the USDA said. In the state there are 129,883 farms listed as feed-grain producers, with base acreage of 1,598,153 acres.

Nationally, the report said, 128,464 farms had signed up by Feb. 15, involving 5,290,814 acres, with a diversion of 2,502,907 acres and payments worth \$50,800,921. In the U.S. there are 3,156,421 farms with base feed-grain acreage amounting to 122,713,323 acres.

The report said the 1961 and 1962 feed grain program had apparently helped reserve a 10-year buildup in feed grain surpluses. By Oct. 1, the USDA said it estimated, total feed grain stocks of 61 million tons will be down about 28 per cent from the record 84.7 million ton-level of Oct. 1, 1961.

"Continued" participation at the last two years' levels should bring stocks "near desirable reserve levels" by Oct. 1, 1964, the report said.

The man who believed street corner gophers thinks he has plenty of sense.

MASS LETTER WRITING—A campaign is under way to attract tourists to Kentucky and to publicize "Strife in My Crown," a historical drama about Western Kentucky from 1800 to 1954. The Kermitt Hendon Wright holds giant postal card, symbol of the campaign urging Kentuckians to write at the drama and visit in Kentucky at least five days this year. "Strife in My Crown" will have a 10-week run, opening about June 25.

Furnishing Capital

ARA Has Provided \$4 Million In Kentucky Loans, Grants

The Area Redevelopment Administration, a creation of the New Frontier, has provided nearly \$4,000,000 in loans and grants to public and private institutions and industries in Kentucky.

Loans, mostly to private industry, amount to \$2,635,096. Outright grants, chiefly for government projects, total \$1,323,101.

Purpose of the ARA, an agency of the U.S. Department of Commerce, is to create employment by stimulating industrial expansion and encouraging municipal improvements.

The following list includes all of the ARA's commitments in Kentucky to this date:

- Braunhitt County** — A \$642,000 grant for the University of Kentucky's projected Wood-Use Demonstration Center.
- Caldwell County** — A \$1,360,000 loan and a \$425,000 grant to extend water and sewer systems to Arvin Electronics Company and Princeton Metal Products.
- Elliot County** — \$220,000 loan for building and equipment for the Mico Manufacturing Company.
- Harlan County** — A loan of \$20,000 for expansion of the Jackson Charcoal and Wood Company.
- Floyd County** — \$45,212 loan for expansion of the Porter Electric Company.
- Harlan County** — \$182,500 loan to establish the Harlan Wood Products Corporation.
- Hart County** — A loan of \$170,000 to establish a branch plant for the Louisville Bedding Company; a loan of \$199,880 to the Mundorville redevelopment group to build a building for lease to the Louisville Bedding Company; also a grant of \$40,000 to extend the Mundorville water system to the new plant.
- Johnson County** — A \$22,500 loan to provide a building for Kentucky Hills Manufacturing Company (a handcarft firm); also a \$150,000 loan to build the Starfire Motel and Restaurant.
- Logan County** — A \$130,000 loan and a \$114,000 grant to extend the sewerage water system to Kentucky Mills, Inc., to build a plant for Hill-Rite Products Company (a woodworking factory); also a \$50-unit nursing home; also a \$144,700 loan to rebuild the John Graham Manufacturing Company (church furniture).

Other Projects
Five projects received grants

RECC Employees Hear Basics Of REA's Program

More than 850 rural electric cooperative employees from across the state attended orientation programs held in Lexington and Owensboro.

The meetings were the first of their kind in which employees from nearly all of Kentucky's rural electric cooperatives heard the basic fundamentals of rural electric presentation as a package by three authoritative speakers.

Speakers were Norman Clapp, REA administrator; Clyde Ellis, general manager of National Rural Electric Cooperative Association; and Tom Nelson, management expert, New York.

Rural electrification is a job that has been done by "amateurs" since the time it could be done by the so-called "professionals," Clapp emphasized. He said the electrification of America has been accomplished in spite of relatively low income per mile of line and low density of consumers per mile.

Ellis stressed the urgency of initiating the cooperative system in Latin-America as a bulwark against communism. He said that less than 100 families control the entire wealth of some Latin countries and he believes the entire southern hemisphere will swing to the Communist bloc unless the people are given "some measure of security such as part ownership in a cooperative organization."

Nelson listed teamwork and employee training as the keys to complete success in any business enterprise. He said management should encourage each employee to improve himself and then establish a program whereby this could be carried out.

Any type of business operation that is not conducting an employee training program will not only lose out eventually to competitor, but is moving backward each day, Nelson concluded.

A plan to televise an interview with President Kennedy over Eastern TV networks shelled until April at least.

A DAY-LONG PROGRAM

KFWC To Hold Self-Improvement Seminar On Morehead State College Campus March 23

A Self-Improvement Seminar sponsored by the Kentucky Federation of Women's Clubs, will be held on the Morehead State College campus Saturday.

Over 150 women from the 8th District of the KFWC are expected to attend the day-long seminar which will utilize outstanding authorities in the areas of speech, personality development, grooming and human relations.

Appearing on the program will be: Andrew York, Director of the Dale Carnegie Schools in Louisville and Lexington; Mrs. Adron Doran, President of the KFWC, Morehead; Mrs. Frances Pennington, KFWC parliamentarian, Ashland; Pat Gross, Instructor in home economics, Morehead State College; Carol Stein, instructor in speech, Morehead State College and Ray Hornback, Assistant to the President, Morehead State College.

Mrs. Sherman Goodpastor, Jr., Owingville, Governor of the 8th KFWC District, will preside at the seminar which will get underway at 9:45 following registration at 9:00 in the new classroom building.

Dr. Adron Doran, President of

Morehead State College, will deliver a welcoming address at 8:45 (Charming Accessory) and Mrs. Doran, whose talk is entitled "What Do You Say and How Do You Say It?"

Miss Gross will speak on appearance and attire in an address entitled "Through The Looking Glass" and Mrs. Pennington will close out the morning session with a discussion of "Do's And Don'ts of Presiding."

Appearing during the afternoon session will be Miss Stein, speaker

ing on "Speech - Your Most Important Asset" and Mrs. Doran, whose talk is entitled "What Do You Say and How Do You Say It?"

The seminar will conclude with Hornback's talk, "Communications, Human Relations and You."

The Morehead seminar is one of nine KFWC self-improvement seminars being held throughout the state during the month of March.

CONVENIENCE is the word

for **DRIVE-IN BANKING**

Since it means ease, you'll surely agree that "convenience" correctly describes our Drive-In banking service.

When you have time, come all the way inside.

When you haven't, just drive up outside!

PEOPLES BANK OF MOREHEAD

Nelson R. Allen
RUSSELL, KY.
Candidate
FOR
Railroad Commissioner
Democratic Party
★ Young ★ Qualified
★ Teacher

Will represent the communities of Northern and Eastern Kentucky with faithfulness

"Our Gold Medallion home simply stays modern," says Mrs. Logan Gates of Carrollton.

"Practical too -- total electric and only \$45.35 a month to operate," says Mr. Gaines.

"We sure wouldn't trade the comfort and modern convenience of all-electric living," Mr. Gaines goes on to say.

"Especially not our flameless electric heating," adds Mrs. Gaines. "It gives us perfect weather the year around — makes my housework easier, too. Even with heating and everything else electric, our bills for two years have averaged only \$45 a month."

Clean electric heating is just one of the bonuses of all-electric living. And a Gold Medallion on your home promises modern convenience years from now!

A Gold Medallion home must have: Major electric appliances
• Light for Living • Full Housepower wiring
• Electric heating.

KU SYMBOL OF SERVICE

KENTUCKY UTILITIES COMPANY
an investor-owned electric company

SO FIRST CLASS ELECTRICALLY
CLEAN COOKING
FAST WATER HEATING
FLAMELESS CLOTHES DRYING
THRIFTY HOME HEATING
EIGHT BOXES FOR LIVING

"Thanks To Grayson RECC . . . And All My Time-And-Work-Saving Electrical Appliances . . . I've Got More Time For Community Activities"

Says Mrs. Ed Mabry Morehead, Kentucky

Kentucky's Rural Electric Co-ops were originally organized to get dependable, low-cost power for farmers. But today hundreds of other Kentucky businesses, like service stations and more, are also RECC members and share in rural electric benefits. But there's more to this story too. Even businesses which are not on RECC lines benefit from rural electricity. How? Because co-op electricity has made the Kentucky farmer more efficient and more prosperous, he has more money to spend . . . to buy the products and services other Kentucky businessmen have for sale.

Grayson Rural Electric Cooperative

KENTUCKY'S RURAL ELECTRIC CO-OPS HELP EVERYONE