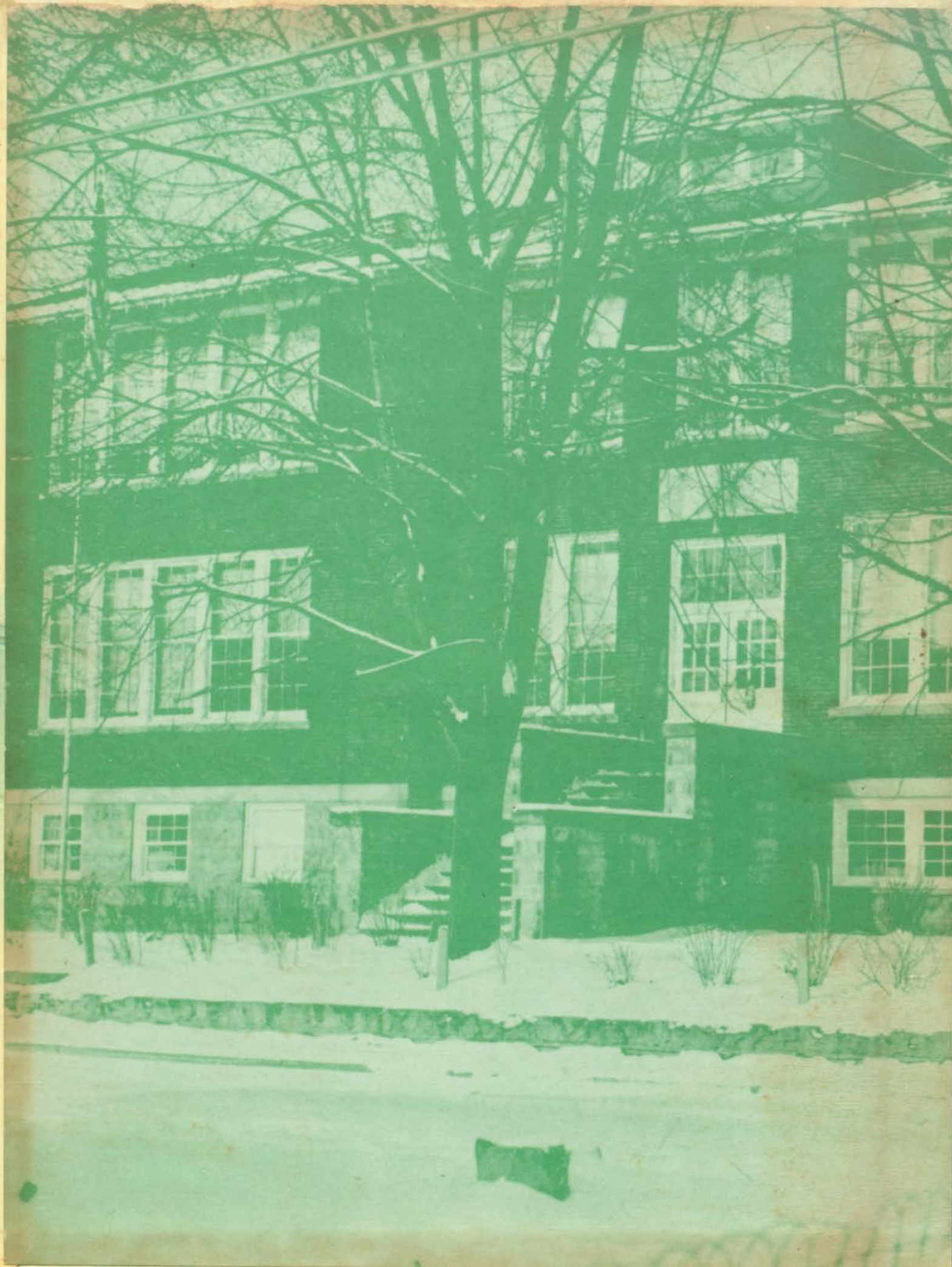




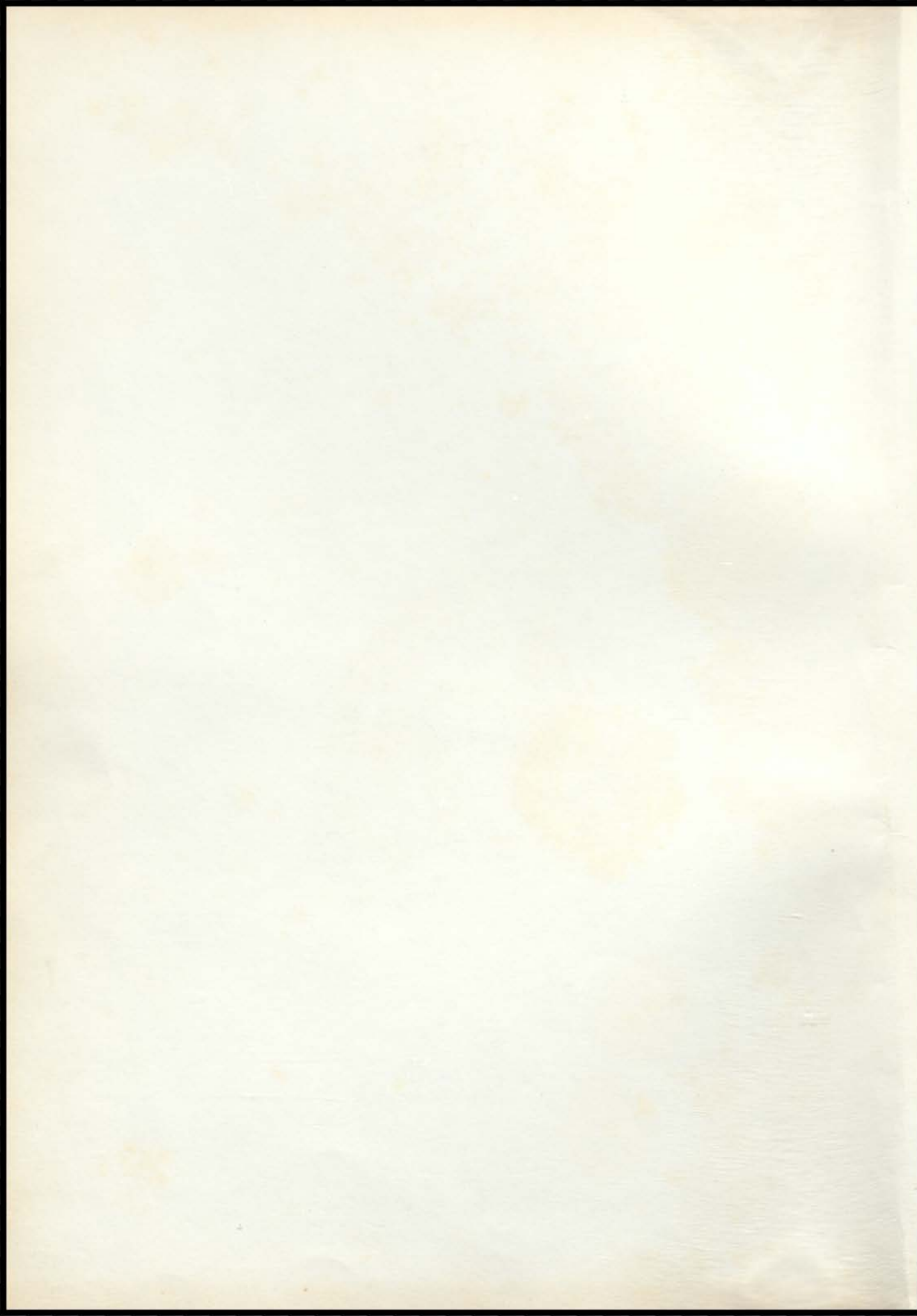
The Viking



1959







The Yearbook Staff

Presents

The Viking



1959

Rowan County High School

Morehead, Kentucky



EDITOR
Sue Crager



ASSISTANT EDITOR
Mary Jane Greenhill



BUSINESS MANAGER
Phyllis Warren

Foreword

As we turn the pages of this book, it brings to mind many memories of our past years at school, and also opens the doors of tomorrow. We are now standing on the threshold of accomplishment. Who can predict our impact on tomorrow's world?

This alone challenges us to set our goals high, grasp opportunity, give service, and find life with hearts filled with courage and hope.

On these pages, you will find our life at Rowan County High School in pictures; the four years of life upon which we now place our trust for the future.

Sue Crager
Mary Jane Greenhill
Phyllis Warren

Contents

DEDICATION

ADMINISTRATION

FACULTY

CLASSES

Seniors

Juniors

Sophomores

Freshmen

Eighth

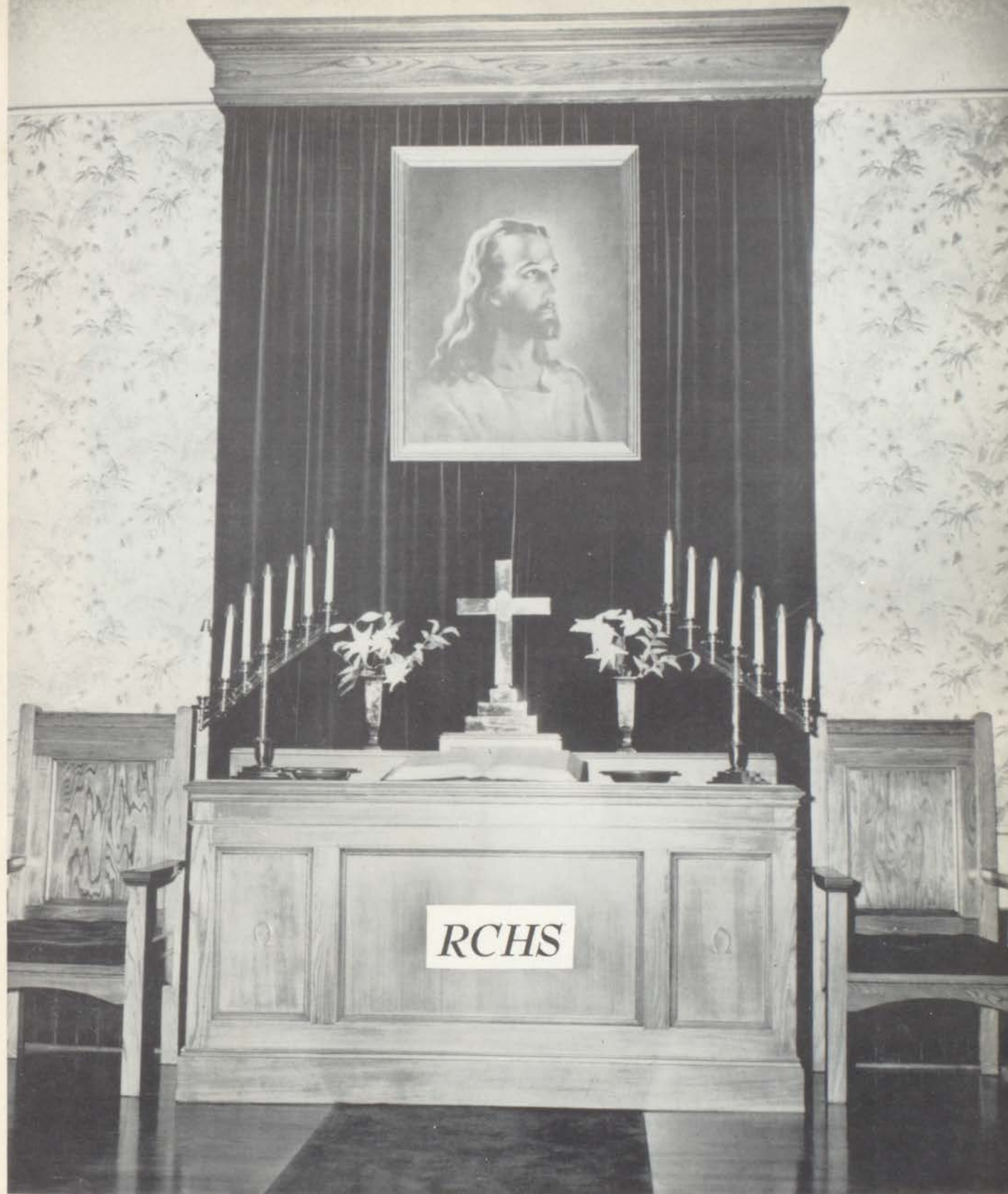
Seventh

ATHLETICS

BAND

CLUBS

FEATURES



Dedication

With the realization that we are still very young in heart and experience; with the knowledge that with their counsel there is yet peace and love, and a deeper, calmer faith for us to seek: we gratefully dedicate this, the 1959 VIKING of Green and White, to our Mothers and Fathers.

Board Of Education



Russel Barker, Curt Lewis, Clifford Cassady, Fred Calvert, Ernest Binion, Sam Lytton, Jr.



CARSON CASTLE

Pupil Personnel

Superintendent



CLIFFORD R. CASSADY, Superintendent



FAYE PARKER, Clerk



VIVIAN YOUNG, Clerk



CALVIN HUNT, Principal



JOYCE HALL
Music



WARD WILLIAMS
Librarian



REIGN SHIPLEY
Band



WARREN COOPER
Coach



CLAY BANKS
Agriculture



MRS. CLAY BANKS
Physical Ed.



MRS. SONNY ALLEN
Home Economics



MRS. W. H. RICE
Home Economics

Faculty



JAMES EARL DAVIS
Dramatics, Speech



GRACE CROSTHWAITE
Mathematics



JO ELLEN HUDGINS
History



MARTHA ESTILL
Commerce



TELFORD GEVEDON
Science, Health



MRS. NOLAN FOWLER
Typing



MRS. LEWIS HIGGINS
Social Studies



MRS. H. C. HAGGAN
English



LESTER EVANS
Physics, Mathematics



MRS. EUGENE WHITE
Science



MRS. L. E. BLAIR
Social Science



MRS. TOM COMBS
English, Art



W. R. JAMES
Seventh Grade



MRS. ROGER WILSON
Seventh Grade



BILLY RAY JAMES
Seventh Grade



LETHA PORTER
Eighth Grade

Seniors

Class Officers

WANDA JOY DAY

N. H. S. 3,4; Bible Survey 3; Class President 4; American History Award 2; English Award 3.



DONALD ELLINGTON

Press Club 3; Salesmanship Award 3; Library Club 4; Class Reporter 3,4; Class Vice-President 4; Hi-Y 4.



HERBERT DEAN RAMEY

F. F. A. 1,2,3,4, Secretary 4, Chapt. Degree 3; Junior Conservation 1,2, President 1,2; Class President 1, Rep. 2; Mask-A-Raders 3,4; National Thespians 4; Senior Play 4; Press Club 2,3, Rep. 4; Basketball 1,2,3,4, Foulshot Award 3; Halloween King 2; 4-H Club 1,2,3; Paper Staff 3,4; Camp Mininwanca Rep 3; Baseball 1,2,3,4.

JUDY GAY PARKER

Citizenship Award 1; Speech Festival 1,2,3,4, State and Regional 1,2,3,4; Band 1,2,3,4; Rep. 3; Dance Band 1,2,3; Mask-A-Raders 2,4; Senior Play 4; National Thespians 4; N. H. S. 3,4, President 4; F. H. A. 1,2, Historian 2, Junior Degree 1, Chapt. 2; Chorus 2,3; English Award 3; Typing Award 3; Class Secretary 2,4, Rep. 1.



DE ETTA LEWIS

Tri-Hi-Y 1,2; F. H. A. 1,2,3; 4-H Club 1,2,3, Co. Sewing Champ. 1; Press Club 3; Mask-A-Raders 4; Senior Play 4; National Thespians 3,4; N. H. S. 3,4; Library Club 1,2,3; Class Vice-President 3, Secretary 1; F. B. L. A. 3,4; Camp Miniwanca Rep. 3; Essay Contest 2; Debate Club 4.



JAMES FOSTER

F. F. A. 2,3,4, Treasurer 4, Chapt. Degree 3, Greenhand Degree 2; Assistant Library Club 3,4; Class Librarian 3,4; Library Club 3,4, Parliamentarian 4; Boys' State 3; 4-H Club 1,2; Hi-Y 4; Junior Conservation 1; F. F. A. State Camp 3; Class Reporter 3.



PAUL EDWIN
CALVERT

Class Vice-President 1;
F. F. A. 1, 2, 3, 4; Cho-
rus 1; Junior Conserva-
tion 1, 2, 3.



EMMA JANE MOORE

F. H. A. 1, 2, Junior De-
gree 1, Chapt. Degree
2, Songleader 2; Class
Librarian 3; Bible Sur-
vey Club 3; Library Club
3; Annual Staff 4.



BETTY JEAN
COLDIRON

F. H. A. 1, 2, Junior De-
gree 1, Chapt. Degree
2; Bible Survey Club 3;
Annual Staff 4.

HURSHEL DEBORD

N. H. S. 3, 4, Vice-Presi-
dent 4; Science Club 1,
2; Junior Conservation
1, 2; English Award 3;
Class Secretary-Treas-
urer 1; 4-H Club 1.



Seniors



CLEO WAYDE
CAUDILL

F. F. A. 1, 2, 3, 4; Class
King 1; Junior Conserva-
tion 1, 2, 3; Junior Con-
servation Camp 1; 4-H
Club 1; Library Club 2;
Creative Writing 2.

JOYCE RIDDLE

Bible Survey Club 3;
4-H Club 1, 2, 3; Speech
Festival 3; Class Song-
leader 3.



JANET ERWIN

Bible Survey Club 3;
4-H Club 1; Class Song-
leader 3.



FREDERICK DARREL
DAVIS

F. F. A. 1; Chorus 1; Mask-
A-Raders 3; Speech Fes-
tival 1, 4; Junior Conser-
vation 1, 2, 3.

SUE CRAGER

F. H. A. 1,2, Junior Degree 1, Chapt. Degree 2; N. H. S. 3,4, Treasurer 4; Tri-Hi-Y 2,3; Library Club 4, Secretary 4; Annual Staff Editor 4; Class Secretary 1, Class Reporter 2, Class President 3.



ROBERT WAYNE CAUDILL

Junior Conservation 2,3; Science Club 2; Annual Staff 4; Student Council 2; Class Vice-President 1.



RUSSELL BURROWS

F. F. A. 1,2,3,4, Reporter 2,3; Conservation Club 2,3; Mask-A-Raders 3; Class Reporter 2; 4-H Club 1.

JOYCE CAUDILL

F. H. A. 1,2, Junior Degree 1, Chapt. Degree 2; Class Treasurer 2, Class Vice-President 1, 2,3; N. H. S. 3,4; Cheerleader 3; Library Club 4, President 4; Assistant Library Club 3; Tri-Hi-Y 4; Annual Staff, Sales Manager 4.



Seniors



JANICE CAUDILL

F. H. A. 1,2, Junior Degree 1; Class Treasurer 1,2, Class Secretary 3; N. H. S. 3,4; Cheerleader 3; Tri-Hi-Y 4; Library Club 1,4, Treasurer 4; Annual Staff, Clubs 4.

DAVID MARKWELL

Basketball 1,2,3,4; 4-H Club 1,2.




CHARLES E. ROBERTS

Chorus 1,2; Cresendo Club 1,2; Music Festival 1,2; Library Club 4; Annual Staff 4.



NANCY ELLEN HALL

F. H. A. 1,2, Junior Degree 1, Chapt. Degree 2, Community Leader 2; F. B. L. A. 4; Library Club 3,4; Tri-Hi-Y 4; Annual Staff, Sales 4; Girls' State 3; Class Librarian 2, Class Secretary-Treasurer 3.

MARY JANE
GREENHILL 

Band 1,2,3,4; Reg. Music Festival 1,2,3, Flute Trio 1,2,3, Woodwind Quintette 3; Crescendo Club 2; F.H.A. 1,2, Junior Degree 1, Chapt. Degree 2, Treasurer 1; Bible Survey Club 3; Mask-A-Raders 4; N.H.S. 4; F.B.L.A. 4; Annual Staff 4; Library Club 4.



RONNIE WEBB

Junior Conservation 1,2,3; Science Club 1,2.



NELSON TRENT

Junior Conservation 1,2,3; Science Club 1.

LORETTA
CROSTHWAITE

Chorus 1; Science Club 2; Class Secretary-Treasurer 3; Class Librarian 4; Mask-A-Raders 4; Bible Survey Club 3, Vice-President 3; Annual Staff 4; Library Club 4.



Seniors



ALICE LEE FULTZ

F.B.L.A. 4; Library Club 4; Bible Survey Club 3; Tri-Hi-Y 4.

JOHN MUNHIER

Band 1,2,3,4, Vice-President 2; F.F.A. 1; Chorus 1.



CHARLES LOWELL
CATRON

Science Club 1; Junior Conservation 1,2.



ELEANOR MAE
STEGALL

Mask-A-Raders 4; 4-H Club 1,2; Library Club 4; F.H.A. 1,2, Junior Degree 1, Chapt. Degree 2; Annual Staff 4.

ZORA JEFF ADKINS

Basketball 1, 2, 3, 4; F. B. L. A. 3; Junior Conservation 1, 2, 3.



EDNA MAE JENNINGS

F. H. A. 1, 2, Vice-President 1, Junior Degree 1, Chapt. Degree 2; Band 1, 2, 3, 4; Class Songleader 1; F. T. A. 4; Crescendo Club 2, 3; Paper Staff 4.



BARBARA JEWELL DAVIS

F. H. A. 1, 2, Songleader 1; 4-H Club 2; Mask-A-Raders 3; Band 1.

BILLY BARKER

Junior Conservation 1, 2; Basketball 1, 2.



Seniors



DONALD LEE ADKINS

Basketball 1, 2; Class Secretary 1; Junior Conservation 1, 2.

JUDY ANN FANNIN

Chorus 1, 2, 3, Ensemble 3; F. H. A. 2, 4; Pep Club 2; 4-H Club 1.



VICY GLOVER



Annual Staff 4; F. H. A. 3; Bible Survey 3; Volleyball 1, 2.



WAYNE CASTLE

Basketball 1, 2; Class Vice-President 1; Junior Conservation 1, 2.

KENNY ROBERT JONES

Band 1,2,3; Hi-Y 3; Chorus 1,2,3; 4-H 1; National Thespians 3,4; English Award 3; Science Club 2,3, Rep. 3; F. F. A. 1; Debate 4; Mask-A-Raders 1,2,3,4, Vice-President 3, Rep. 4; Drama Festival 2,3,4; Senior Play 3,4; Speech Festival 1,2,3, Superior Rating 1,3; Boys' State 1; Camera 2; Crescendo 2.



MARGARET DEBORD

F. H. A. 1,2,3,4, Rep. 3, Vice-President 4, Junior Degree 1, State 3, Chapter Degree 2; N. H. S. 3, 4, Parliamentarian; F. B. L. A. 3,4, Secretary-Treasurer; Paper Staff 4, Press 3; Tri-Hi-Y 1,2; Class Vice-President 3, Reporter 3; Debate Club 4.



PEGGY ANN HAMM ✨

F. H. A. 1,2,3,4, Junior Degree 1, Chapt. Degree 2, State Degree 4; Press Club 3; Class Reporter 2,3; Library Club 3,4; Girls' State Camp 3.

WAYDE JONES

Basketball 2,3, Manager 4; F. F. A. 1,2,3,4.



Seniors



RAYMOND CONN

Junior Conservation 1,2,3; Boys' State 3; Science Club 1; County Fair King 3.

SADIE COX

Paper Staff 3; F. T. A. 4; Library Club 4; Typing Award 2, Second Place.



VIRGINIA JEAN BOWMAN

F. H. A. 1,2, Junior Degree 1, Chapt. Degree 2; Paper Staff 3; F. T. A. 4; Library Club 4.



TROY WADDELL

Junior Conservation 1,2,3; Science 1; Boys' State 3.

SUSAN CAUDILL ✨

Library Club 1, Secretary 1; F. H. A. 1; Chorus 1, 2, 3; Class Librarian 3; Music Festival 1, 2, 3; Sextette 2, 3; Senior Play 4; Crescendo Club 3, President 3; County Fair Queen 2; 4-H Club 1, 2; Annual Staff 4.



JAMES RUSSELL PORTER

F. F. A. 1, 2, 3, 4, Sentinel 2, Secretary 3, President 4; 4-H Club 1, 2, 3, 4; Class President 3, Vice-President 2; Senior Fair King 4; Chorus 2, 3; Music Festival 2, 3; Crescendo Club 3; Speech Festival 3, 4; Senior Play 3, 4; Junior Conservation 1, 2; F. F. A. State Camp 2; Annual Staff 4.



LARRY M. BLACK

Junior Conservation 1, 2; 4-H Club 1; Class King 1, 2; Class President 1; Science Club 1; F. F. A. 2; Paper Staff 4; Annual Staff, Typist 4.

CARMILETA RIGSBY EVANS ✨

F. H. A. 1; Chorus 1, 2, 3, Reporter 1, Secretary 2, Treasurer 3; Senior Play 4; Class Queen 1; Crescendo Club 2, 3; Music Festival 1, 2, 3, Sextette 2, 3, Soloist 2; Class Secretary 1, 2, 3; Annual Staff 4.



Seniors



DEAN WELLS

F. H. A. 1; Band 2, 3, Majorette 2, 3, Head Majorette 3; Crescendo Club 2, 3; Chorus 1, 2, 3; Music Festival 1, 2, 3; Class President 2; 4-H Club; Annual Staff 4.

ROGER JOHNSON

F. F. A. 1, 2; Senior Play 4; Boys' State 3; Chorus 2, 3; Music Festival 2, 3; F. F. A. Camp 2; Crescendo Club 3; Junior Conservation 1, 2.



CHARLES EDWARD JOHNSTON



WANDA ANDERSON

Science Club 1; Tri-Hi-Y 1; Chorus 1, 2, 3; 4-H Club 1; Annual Staff 4.

CHARLOTTE DEANNA
ALFREY

F. H. A. 1,2; Library
Club 1; 4-H Club 1,2,3.



KENNETH LEE HALL

Science Club 3; Basket-
ball 1,2,3,4; Junior
Conservation 2.



GENE CLAIR BOWEN

Basketball 1,2,3; 4-H
Club 1,2,3; Library Club
3; Junior Conservation
1,2.

DOROTHY IRIS
HARGIS

Library Club 1; F. H. A.
1,2; Chorus 1; 4-H Club
1,2,3.



Seniors



RUBY CLAUDETTE
FRANKLIN

Bible Survey Club 3; N.
H. S. 3,4, Secretary 4.

JAMES OLIVER
STEVENS

Library Club 4; F. F. A.
1,2,3,4; Junior Conser-
vation 1,2; 4-H Club,
Vice-President 1,2.



BOBBY BUTLER

4-H Club 1,2,3; Library
Club 1; Junior Conserva-
tion 1,2.



LOU MESSER

Bible Survey Club 3.

LOWELL BILLY BROWN

Press Club 2; F. F. A. 2.



MARY JOHNSON

Library Club 1; Tri-Hi-Y 3; F. H. A. 3; Mask-A-Raders 3, 4; 4-H Club 4; F. H. A. Junior Degree 3.



INA CHLOE TRENT

F. H. A. 1, 2, Junior Degree 1, Chapt. Degree 2; Class Reporter 1; F. T. A. 2, 3, Parliamentarian 3; 4-H Club 1, 2; First Aid 3.

GAYNES LAW

Science Club 3; Press Club 3; Annual Staff 4.



Seniors



LARRY LINVILLE

Junior Conservation 1, 2, 3; 4-H Club 1, 2.

ROSEMARY EVANS

4-H Club 1, 2, 3, 4, Secretary 4; Library Club 1, 2, 3, 4, Vice-President 4; Tri-Hi-Y 1; Mask-A-Raders 2, 3, 4, Treasurer 3, 4; National Thespians 3, 4, Treasurer 3, 4, Librarian 4; Cheerleader 4; Senior Queen 4 (3rd).



SHIRLEY MABRY

F. T. A. 4; Sports Club; Bible Club; National Relationship Conference.



DONALD ROYSE

4-H Club 1, 2; Junior Conservation 1, 2, 3; F. F. A. 1, 2, 3, 4.

BILLY POTTER

Basketball 1,2,3,4; Junior Conservation 1,2,3; Folk Club 1,2; Mask-A-Raders 4; Senior Play 4; National Thespians 4.



CONSTANCE LEE FANNIN

Chorus 1,2,3; Girls' Trio 1,2; Ensemble 2,3; Music Festival 1,2,3; 4-H Club 1,2, President 2, Secretary 1; Class President 1; Minstrel Club 3; Mask-A-Raders 4; Debate Club 4.

HAZEL MAVOURNEEN KIDD

Bible Survey 3, Treasurer 3; 4-H Club 1,2,3,4, Rec. 1, Rep. 3,4, Vice-President Co. 4-H 4; Mask-A-Raders 1,2,3,4, Rep. 2,3, President 4; Tri-Hi-Y 1; Library Club 2; F. H. A. 1,2,3,4, Junior Chapt. State Degrees 1,2,3; National Thespians 3,4, President 3,4; Drama and Speech Festival 3,4; Debate 4, Secretary and Rep. 4.

LEO WILLIAMS

F. F. A. 1; Band 1,2,3; Chorus 1; Mask-A-Raders 3.



Seniors

BUDDIE STIDOM

F. F. A. 1,2,3,4, Rep. 4; 4-H Club 1,2,3,4; Basketball 2,3,4; Press Club 3; Paper Staff 4; Mask-A-Raders 2,3,4; National Thespians 3,4, Vice-President 3,4; Speech Festival 3,4; Baseball 2,3,4; Senior Play 4.

JO ANN KEETON
MC BRAYER

Mask-A-Raders 1,2,3,4; National Thespians 3,4, Reporter 3; N. H. S. 3,4; F. H. A. 1,2; Tri-Hi-Y 3; Reg. Speech Festival 2,3, Excellent 2, Superior 3; State Speech Festival 3, Excellent 3.



JUDY BIRNICE PLANK

4-H Club 2; Bible Survey Club 3.



HOBERT CLARENCE BROWN

Bible Survey Club 3; Junior Conservation 2; F. F. A. 4; Press Club 2.

ELEANOR JANE PERRY

Bible Survey Club 3; Tri-Hi-Y 2.



JEARLDINE PRINCE

Bible Survey Club 3; F. B. L. A. 4.



WILMA LOUISE BUTLER

F. B. L. A. 4; N. H. S. 4; F. H. A. 1, 2, 3, Vice-President 3, Rep. 2, Junior, Chapter and State Degrees 1, 2, 3; Press Club 3; Class President 2, 3; Annual Staff 4; Paper Staff 4; 4-H Club 1; Library Club 4; Mask-A-Raders 4; Senior Play 4; National Thespians 4.

PHYLLIS ANN WARREN

Library Club 1; Class Reporter 3; Citizenship Award 1; Paper Staff 3; Press Club 3; Girls' State 3; Annual Staff 4; F. B. L. A. 4, Rep. 4; Mask-A-Raders 4; National Thespians 4.



Seniors

ARBUTIS COX

Cheerleader 1, 2, 3; Class Reporter 2.

WANDA LOU LEWIS

F. H. A. 1, 2, Junior Degree 1, Chapt. Degree 2; Tri-Hi Y 3; Bible Survey Club 3; Bookkeeping Award 3; Paper Staff 3; N. H. S. 4; Mask-A-Raders 4; National Thespians 4; Annual Staff 4; Typing Certificate 2.



VIRGINIA HAZEL STAGGS

F. H. A. 1, 2, 3, Junior Degree 1, Chapt. Degree 2; Tri-Hi-Y 3, Sergeant 3; 4-H Club 1, 2, 3, Secretary 3, Co. Secretary 3; Flower Arrangement 3; Library Club 4.



ROCHELLA FRALEY RIVERS

Library Club 4; Tri-Hi-Y 4; 4-H Club 1; Annual Staff 4; F. B. L. A. 3, 4, Vice-President 4; N. H. S. 3.



MARCELEAN STEVENS

4-H Club 1,2; Bible Survey Club 3,4; F. B. L. A. 4; Tri-Hi-Y 4; Library Club 4; Annual Staff 4.



MARLENE FAYE WILLIAMS

Bible Survey Club 3; F. B. L. A. 4; Library Club 4.



MARGARET MESSER

Cheerleader 1,2,3; Chorus 1,2,3; Crescendo Club 2,3; Tri-Hi-Y 2,3; Band 1,2,3, Majorette.

EDNA REEDER

F. H. A. 3; F. B. L. A. 3; Volleyball 1,2.



Seniors



MYRTLE SKAGGS

F. H. A. 1, Vice-President 1; Science Club 2; Class Secretary 1, Class Treasurer 3; Pep Club 1,2,3; Glee Club 2,3; Mask-A-Raders 4; Art Club 3; Class President 3.

BARBARA ANN CAUDILL

1958 Graduate; Paper Staff; Office Work.



HERFF JONES COMPANY
Worlds largest manufacturers of Class Rings
Official Jewelers
1401-1429 North Capitol Ave.
Indianapolis 7, Indiana

Rowan County High School

Juniors



Grace Hall, President
Sharon Pennington, Vice-President
Danny James, Secretary



Faye Christian
Roger Riddle



Wilma Crawford, Treasurer
Kay James, Reporter
Betty Clevenger, Reporter



Larry Murphy
Joyce Foley



Scottie Martin
Mary Linville
Bobby Christian



Della McGuire
Jimmy Crawford



Marcella Porter
Larry Kimmel
Junior Kidd



Gary Jones
Pauline Kegley



Bobby Hogge
Donna Lewis
John Hargis



Glennis Buckner
Billy Fannin



Kenneth Johnson
Anna Morrison
Harry Adams



James Boyd
Bill Cassidy



Mary Lewis
Joe White
Gary Williams



Larry White
Aloma Epperhart

Juniors



Ronald Dehart, President
Patricia Kidd, Vice-President



Kenneth Brooks
Kay Barracks
Eddie White



Sue Whitt, Secretary-Treasurer
Kay Early, Reporter




Daniel Workman
Sue Conn
Lawrence Spencer



Steve Eldridge, Reporter
Sally Eldridge, Songleader



Janet Dulin 
Billy Porter
Barbara Eldridge



Lavaughn Mynhier, Songleader
Andy Pelfrey



Wilburn Moore
Shirlene Eldridge
Ronnie Logan



Denver Messer
Dessie Fraley



Blandena Lambert
Roger Lester
Dolly Reed



Billy Greenhill
Phyllis Parker



Lawrence Dowdy
Glenda Thomas
Dorene Roe



Virginia Lambert




Albert Erwin
Jean Withrow
Raymond Johnson

Juniors

Anna Eldridge, President
 Jimmy Poston, Vice-
 President
 Ernestine Brown, Secre-
 tary-Treasurer

Sue Prater
 Clyde Wagoner

Edward Smith, Reporter
 Helen Thomas, Reporter
 Lee Gale Crisp

Tony Lands 
 Nancy Plank

Barbara Trent
 Earl Acree
 Wanda White

Jeanette Gregory
 Bobby Thomas

Elvis Tackett
 Jewell Erwin
 Walter Tackett

Barbara Caskey
 Archie Conn

John Barnett
 Donna Manning
 Marcella Caudill

Wilford Pennington
 Mollie Coldiron

Geraldine Dewitt
 Clyde Roberts
 Patsy Horton

NOT PICTURED:
 Jiles Riley
 Gentry Hinton

MEADOWS POOL ROOM

Pat McGary, Manager

Billiards Snack Bar

Sandwiches Cold Drinks Hot Chili

Sophomores



Mary Jo McKinney, President
Patricia Burnett, Vice-President

Jimmy Brown
Mary Alice Bradley
Matt Cassidy



Bonnie Templeman
Secretary-Treasurer
Clyde James, Librarian

Carol Brown
Bobby Combs
Phyllis Fraley



Donna Templeman, Reporter
Bonnie Williams, Reporter

Tommy Fouch
Martha Hall
Johnny Fultz



Carol Adkins, Songleader
Janet Lewis, Songleader

Judy Baldrige
Carl Dehart
Deloris Baldrige



Jimmy Cox
Patty Hall

Mack Hall
Barbara Kidd
Waverley Jones



Faye McManus
Larry Johnson

Barbara Trent
Dora Lee Trent
Ronnie Porter



Clarence Porter
Faye Ramey

Buford Owens
Billy Warren
Gary James



Sophomores



Larry Hardin
David Stone
Gary Razor



Jackie Stevens
Ray Williams



Joan Wells, President
Leroy Caudill, Vice-President
J. T. Fannin, Secretary-Treasurer



Linda Alfrey
Billy Epperhart



Janet Ray Lewis,
Reporter, Librarian
Albert Alderson
Fay Ola Blair



John Black
Linda Hunter



Larry Lowe
Pauline McClurg
Billy Lowe



Patricia Moore
Jackie Williams



Lillian Debord
Carl Jones
Barbara Murphy



Billy Hanes
Laxie Ramey



James Flannery
Vonnie Stamper
James Hamilton



Verla Hall
Bradley Collins



Karen Jones
Patricia Elam
Doris Hammond

NOT PICTURED
Deroy Adkins
Calvin Wells

Sophomores



Jimmy Murray, President
Jerry Curtis, Vice-President

Martha Pennington
Jerry Collins
Edna Netherly



Maxine Akers, Treasurer
Patricia Ashford, Secretary

Raymond Smith
Linda Dehart
Charles Wright



Shirley Daily, Reporter
Glenda Lewis, Librarian

Edna Jennings
Randall Elliott
Eula Hamm



Everett Jennings
Chester Catron

Ronnie Chadwell
Shelia Kay Hogge
Douglas Johnson



Mary Lacy
Delmis Lewis

Marlene Prince
Albert Littleton
Opal Thomas



NOT PICTURED
Cecil Baldrige
Dianne Emmons

Olen Rigsby
Maxine Prince
Douglas Owens



THE BIG STORE
Railroad Street, Morehead, Kentucky
Clothing, and Shoes for the Entire Family
Save on Railroad Street
Plenty of Parking Space

Freshmen



Jeanette Caudill, President
Eddie French, Secretary
Sharon Newman, Treasurer



Jimmy Ashford
Connie Adkins



Phyllis Ramey, Reporter
Dickie Stidom, Reporter
Virginia Howard, Librarian



Anna Lee Blair
James Black



Glennis Blair
Linda Collins
James Brown



Kenneth Brown
Jimmy Caskey



Beverly Conn
Ronnie Collins
Virgil Cornett



Joyce Gardner
Michael Crawford



Judith Hamm
Paul Eldridge
Marie Hamm



Vernon Fugate
Samuel Hargis



Larry Lambert
Sue James
Mike Lambert



Nola Jefferson
Paul Lambert



Roberta Moore
Roger Owens
Paulette Mynhier



Richard Parker
Gary Pennington

Freshmen



Elijah Roberts
Charlotte Riddle



James Roger Roe
Andrea Tackett
Freddy Scaggs



Mada Wescott
Larry Sorrell



Duke Williams
Robert Adams
Claude Anderson



Teddy Eldridge, President
Ronnie Carter, Vice-President



Donald Blair
Chaunelt Brown
Ralph Cassidy



Kay Porter, Secretary
Sharon Spurlock, Treasurer



Carolyn Adkins
Carmie Baker
Wyoma Baldrige



Junice Foley, Reporter
Billie Jo Gregory



Curt Caudill
Chester Caudill
Shirley Brown



Ronnie Caudill
Dorothy Brown



Corbett Dillon
Billie Jo Curtis
Ray Elam



Billy Fannin
Malinda Easton



Kenneth Hall
Gerald Foster
Linda Freeman

Freshmen



Tommy Horton
Ethel McDowell
Wilbur Jennings



Jerry McElroy
Patricia Faulkner



Madelyn Jennings
Freddie Morehouse
Paul Jackson



Shirley Black
Gayland Adams



Neil Fannin, President
Bernard Johnson, Vice-
President
Sharon Foster, Secretary-
Treasurer



Kathy Phillips
Emogene Blevens



Joyce McKenzie, Reporter
Joyce Carpenter, Librarian
Linda Cooper, Songleader *



Lois Brewer
Paul Boyd



Curtis Butler
Carolyn Caudill
Ronnie Creech



Vaughn Dean
Nina Charles *



Kay Cogswell
Howard Hall, Jr.
Margaret Crum



Linda Flannery
Walter Hargis



Emil Howard
Odema Gregory
Gary Lambert



Carolyn Hunter
David Stegall

Freshmen



Mary Lewis
Yvonne Lewis

Lavena McClain
Charlotte Murphy
Gene Caskey



Connie Epperhart, President
Roberta Hosack, Secretary

Addison Dulin
Carol Blakenship
William Freeman



Roger Morehouse, Reporter
Charlene Eldridge, Reporter

Judy Boyd
Elmer Long
Margie Collins



Mary Johnson, Songleader
Judy Martin, Songleader

Michael Shay
Eugenia Dehart
Burl Snipes



Garland Early
Wilma Nesbitt, Songleader

Patricia Ferguson
Carl Stidom
Judy Fraley



Sylvia Gullett
Melva Hardin

Myrtle Helton
Olonia Jones
Deloris Kidd



Bessie Norris

Sahara Porter
Glenda Wicker
Phyllis Linville



Eighth

Robert Moore, President
David Richardson, Vice-President
Dorinda Jamison, Secretary

Barbara Jones
David McClain

Timothy Hicks, Treasurer
Mitzie Kelsey
Edison Whitt

David Wells
Betty Mayfield

Etta Morrison
Ronald Trent
Cynthia Nesbitt

Katy Porter
Ora Wagoner

Ted Triplett
Norma Porter
Sterling Spencer

Larry Smith
Helen Plank

Gloria Riddle
Jeff Stamper
Lydia Scott

Linda Thomas
Raymond Shields

Bill Quesinberry
Mary Watson
Allie Mynhier

Bobby Kegley
Joan Hatton

Alice Jackson
Jimmie Cassity
Betty Hatton

Louise Giles
James Ison



Eighth



Wanda Adkins
Russell Howard

Anna Adams
Jimmy Grubbs
Mary Lou Black



C. W. Gulley
Carolyn Adkins

Larry McElroy
Enfield Acree
Charles Castle



Virginia Brown
Bobby Caskey

Linda Barbour
Arlie Caudill
Anna Sue Butler



Charles Conn
Wanda Brewer

Sonny Conn
Ella Mae Carter
Roy Curtis



Grace Collins
Eulas Fannin

Marilyn Fraley
Ruth Combs
Jewell Collins



Seventh



Mary Ashford, President
Rita McManus, Vice-President

Bennie Caudill
Judy Bradley
Allie Black



J. D. Reeder, Secretary
Billy Kidd, Treasurer

Carol Carter
Roger Dulin
Bernice Caudill



Seventh



Roger Early
Gladys Bennison
Karl Weisenberger



Mary Caudill
Don Smedley



Mary Cooper
Lilborn Poston
Janet Craowe



Jack Evans
Janice Faulkner



David Flannery
Beulah Hamm
Junior Hall



Betty Hargis
Billy Stevens



Elizabeth Harmon
Larry Kegley
Diana Ison



Larry Newman
Sheila Murphy



Billy Poston
Connie Hays
Bonnie Thomas



Betty Scott
Charles Roberts



Anna Jane Jones
Sheila Quesinberry
Janice Sargent



Betty Lewis
Patsy Johnson



Wanda Markwell
Sharon Nickell
David Leech



Raymond Lopez
Mickey Stevens

Seventh



Sue Christian, President
Sheila Mays, Vice-President

Bobby Christy
Brenda Armstrong
James Scudder



Deanna Triplett, Secretary-
Treasurer
Boyd Engle, Reporter

Jacquelyn Clark
Oshel McKinney
Nancy Gearheart



Paulette Jamison, Reporter
Roberta Hardin, Librarian

Michael Moore
Sonjia Howard
William Overly



Donna Thomas, Songleader
Dallis McClain

Anna Jennings
Clarence McClain
Judy Norris



Dannie Hopwood
Earlene Skaggs

Kenneth Fultz
Carolyn Tackett
Ralph Davis



Mike Lewis
Larry Ferguson

Donnie Skaggs
Roberta Lewis
Ronnie Skaggs



Senior Questionnaire

NAME	ALIAS	HE IS - SHE IS	FAVORITE SONG
Charlotte Alfrey	Sis	Boy crazy	One Night
Donald Adkins	Tiny	A poolroom shark	Tom Dooley
Jeff Adkins	Zorro	A lover	My True Love
Wanda Anderson	Andy	A Daydreamer	Only Make Believe
Billy Barker	Bill	A Character	Tom Dooley
Larry Black	Caesar	You name it.	Summer Time Blues
Gene Bowen	Claire	Big Flirt	Tom Dooley
Virginia Bowman	Blackie	Talkative	Forget Me Not
Hobart Brown	Quiety	Quiet	Tell Me That You Love Me
Billy Brown	Curley	A Romeo	Bird Dog
Russell Burrows	Pug	Unpredictable	Devoted to You
Bobby Butler	Tom	Loco	One Night
Wilma Butler	Lou	Reserved	Devoted to You
Paul Calvert	Possum	Sweet	One Summer Night
Wayne Castle	Little Charlie	Stupid	Tom Dooley
Charles Catron	Jack	Shy	Tom Dooley
Cleo Caudill	Doc	Leechy	Tom Dooley
Janice Caudill	Crip	Devoted	It's Only Make Believe
Joyce Caudill	Jo	Unpredictable	It's All in the Game
Robert Caudill	Bobby	Good Looking	Lover's Question
Susan Caudill	Sissy	Studious	I'm Sorry
Sue Crager	Susie	Studious	It's Only Make Believe
Loretta Crosthwaite	Susie	Cute and quiet	One Night
Betty Coldiron	Bet	Nice to know	What Am I Living For?
Raymond Conn	Romeo	Too eager	It's Only Make Believe
Sadie Cox	Kitten	You Guess	Devoted to You
Barbara Davis	Barbie	Nice to know	One Night
Frederick Davis	Tucker	An actor	Only Make Believe
Wanda Day	Windy	Brainy	Kiss of Fire
Hurshel Debord	Hayseed	Brainy	Tom Dooley
Margaret Debord	Margie	Private property	Love Is All We Need
Donald Ellington	Snooks	Silly	One Night
Janet Erwin	Jan	Lonely	Chantilly Lace
Carmie Evans	Coot	Cooperative	Temptation
Rosemary Evans	Rosie	Sarcastic	It's All in the Game
Connie Fannin	Connie	In love	You Are My Sunshine
Judy Fannin	Judy	Crazy	One Night
Ruby Franklin	Ruby C.	Quiet	I Wish
James Foster	Big Jim	Friendly	I'm Walking
Alice Fultz	Betty	Sociable	Only Make Believe
Mary Jane Greenhill	Janie	Married	Sentimental Reasons
Vicy Glover	Vite	Walking on Air	I'm Walking
Kenneth Hall	Chick	Star	It's Only Make Believe
Nancy Hall	Nancy	Changeable	Return to Me
Peggy Hamm	Peg	Lovely	Only Make Believe
Dorothy Hargis	Dottie	An Elvis fan	One Night
Edna Jennings	Turkey	A pain	It's Only Make Believe
Mary Johnson	Ping	Cute	One Night with You
Roger Johnson	Rog	Adorable	It's All in the Game
Charles Johnson	Charlie	Impossible	It's Only Make Believe
Kenny Jones	Jonsey	Rattlebrain	Love Is All We Need
Wayde Jones	Suede	Tall	All Shook Up
Hazel Kidd	Hannah	No angel	Only Make Believe
Gaynes Law	Gansey	Sissy	Yakkety Yakk
DeEtta Lewis	Dee	Nobody's fool	It's All in the Game
Wanda Lewis	Wandy	Brilliant	It's All in the Game
Larry Linville	Lar	Fussy	Pussy Cat
Shirley Mabry	Shirl	Capable	Problems
Jo Anne McBrayer	Jo	Dramatic	It's All in the Game
David Markwell	Dave	Engaged	Lover's Question

Senior Questionnaire

ATTRACTION	AMBITION	USUALLY FOUND	FAVORITE EXPRESSION	PASTIME
Tall boys	Secretary	Bus Station	Oh, no	Dancing
Cars	Butcher	Poolroom	Duck butter	Hunting
Genevieve	Pipeliner	Genevieve's	El Zorro strikes again	Genevieve
Eyes	Housewife	Keith & Davis'	How about that?	Eating
Feet (Two feet)	Common man	With Wayne Castle	Chicken teeth	Sleeping
Kay	Carpenter	Bluestone	Why, sure	Working
Carol	Welder	Dairy Mart	Sign this excuse	Loafing
New cars	Secretary	With Sadie	Get lost	Writing letters
Books	Author	In homeroom	I don't know	Reading
Eunice	Engineer	In the hall	Shut up	Picking a mandolin
Janet	Pipeliner	Keith & Davis'	That's life	Calling girls
Girls	Carhop	Dairy Martt	Be quiet	Girls
Stage	Secretary	Anywhere	Stupid	Studying
His hair	Lawyer	Poolroom	Ah, shucks	Fight Roosters
Girls	Doctor	With Billy	No sweat	Driving
Girls	Lawyer	In the halls	I don't know	Driving
Dames	Truck driver	With Jimmy	Let's see	Loafing
Boys	Secretary	With Joyce	No kidding	Day dreaming
Earnie	Housewife	With Janice	Oh, Daddy	Eamie
Girls	Doctor	At the movies	I don't believe it	Loafing
Hair	Nurse	With Dean & Connie	Ah, I don't know	Eating
Senior boy	Secretary	With twins & Nancy	Really now	Wishing
Boys	To leave	At McBrayer Pierce	Ah, heck	Listening to radio
Boys	Beautician	With Jane	You're crazy	Talking to Jane
Girls	Authority on girls	By the radiator	Beat it	Loafing
Tall boys	Secretary	With Virginia	I don't know	Writing letters
Cars	Secretary	With Sue	Oh, Gee Whiz	Gad about
Girls	Engineer	Working on cars	What the world	Shooting pool
Boys	Go to college	With Ruby	Sick, sick, sick	Writing
Horses and women	Engineer	At home	I guess	Hunting
Kenny	Journalist	Studying	Let me see now	Thinking
Junior girl	Candlestick maker	Bus station	Dig it	Playing records
55's	Expert driver	With Lu	Gosh, Oh	Radio
Clothes	A model	At home	You reckon	Sewing
Ronnie Porter	Marry	With Ronnie	Heck	Talking
Billy Potter	Secretary	With Billy	What do you think	Chasing Billy
Jessy Thompson	Stenographer	With Jesse	By hokies	Entertaining
Jack	Secretary	With Wanda	Golly	Reading
Girls	Engineer	In the halls	Guess that told you	Talking
Handsome boys	Go to Muncie, Ind.	With Geb & Claude	Oh, shoot	Daydreaming
Clothes	Teacher	Home	Oh, shoot	Sewing
Boys	Secretary	With Edna	You bet	Writing letters
Girls	Barber	Perry's house	It's all right	Basketball
Boys	Airline hostess	Twins & Sue	You, dog, you	Loafing
Cute boys	Waitress	Talking to boys	Oh, Lord	Reading
Boys	Secretary	School	I forgot it	Listening to music
Convertibles	Waitress	At work	Shoot, doggone it	Traipsing around
Boys	Secretary	Near the radiator	I don't believe it	Star gazing
Girls	Detective	School	Dad gum	Loafing
Girls	Truck driver	With Cleo	Beats me	Cleaning cars
Margaret	Air cadet	With Margie	Gota shagg	Seeing Margie
Height	Stenographer	With Sue & Carmie		Going to Farmers
Stage	Archeologist	Davis' room	Really	Reading
Figures	Pilot	By telephone	Square	Smoking
Jerry Marshall	Nurse	Waiting	That's the way it goes	Thinking
Stage	Secretary	With Phyllis	Really	Music
Myself	Hobo	In the hall	Don't know	Loafing
Convertibles	Airline hostess	Dairy Martt	I don't know	Out on dates
Edman	To have a home	At home	How tender	Sharing
Ruth	Air Force cadet	Gymnasium	Is that right?	Seeing Ruth

Senior Questionnaire

NAME	ALIAS	HE IS - SHE IS	FAVORITE SONG
Lula Messer	Lu	Adorable	Beep-Beep
Jane Moore	Janie	A Flirt	Only Make Believe
John Mynhier	Johnny	Lover boy	Let Me Call You Sweetheart
Judy Parker	Jud	Sweet and Friendly	Autumn Leaves
Eleanor Perry	Snorky	Dignified	One Night
Judy Plank	Jud	Ambitious	Am I losing You?
Jim Porter	Hoody	A heart breaker	Just a Dream
Billy Potter	Buttons	Handsome	Poor Boy
Geraldine Prince	Jo	Lovely	My True Love
Herbert Ramey	Herbie	Ladies' Man	Lover's Question
Joyce Riddle	Jo Ebb	Nuts	Trying to Forget
Rochella Rivers	Sally	In love	Devoted to You
Charles Roberts	Charley	Comedian	That's When Heartaches Begin
Donald Royse	Don	Shark	Let Me Call You Sweetheart
Hazel Staggs	Hazel	A Homemaker	To Know Him Is to Love Him
Eleanor Stegall	Bird Brain	A Flirt	Only Make Believe
Marcelean Stevens	Marcy	Choosy	Only Make Believe
Oliver Stevens	Cob Neck	Loud Mouth	Tom Dooley
Buddie Stidom	Senator	An Actor	In the Gloaming
Ina Chloe Trent	Chloe	Belle	A Home in the West
Nelson Trent	Nelson	A Romeo	It's All in the Game
Troy Waddell	Troy	Heartbreaker	To Know Him Is to Love Him
Phyllis Warren	Phil	Taken in Completely	One Night
Ronnie Webb	Little Webb	Road Runner	Tom Dooley
Dean Wells	Possum	Moody	Without Love
Marlene Williams	Sis	Engaged	Lover's Question
Leo Williams	Earnie	Nutty	Wake Up, Little Susie



QUEEN, Rosemary Evans

KING, James Porter

1958 ROWAN COUNTY FAIR

Senior Questionnaire

ATTRACTION	AMBITION	USUALLY FOUND	FAVORITE EXPRESSION	PASTIME
Cars	Mechanic	Olive Hill	Yeh	Moping
Boys	Typist	With Betty	Smartie	Listening to records
Girls	Band director	With Melya	Oh, shut up	In the hall
Herbie	Teacher	With Herbie	Oh, shoot	Reading
Boys	Nurse	At school	Oh, shoot	Music
Convertibles	Secretary	Down town	Gee whiz	Riding around
Blondes	Truck driver	C and N Service station	Think it'll work	Working on cars
Girls	Private Eye	At the movie	David	Courting
Boys	Nurse	Anywhere	Ouch	Loafing
Girls	Coach	With Judy	Look out	Basketball
Pretty things	Airline hostess	Loafing	Well, shoot	Playing records
My husband	Housewife	With husband	Beats me	Reading
Carol	Mechanic	In the hall	Huh	Music
Don	Banker	Poolroom	Oh, Gee	Standing in hall
Noel	Secretary	With Noel	Gee	Housekeeping
Ronnie	Secretary	In the hall	By gosh	Dreaming
Convertibles	Beautician	At home	No kidding	Day dreaming
Girls	Dog catcher	Poolroom	Gum it	Poker
Girls	Baseball star	With Herbie	I don't know	Sports
Handsome boys	Secretary	Down town	Oh, heck	Write letters
None	Gambler	Youth center	Poker	Playing
Girls	Master opposite sex	With Ronnie	Poolroom	Loafing
Sonny	Bookkeeper	With Wanda	Shoot	Writing letters
Eleanor	Truck driver	Anywhere	Let's trick them	Many things
Men	Marry a millionaire	Washing car	What luck	Reading
Adrian	To marry	Adrian	Shucks	Daydreaming
Trucks	Mechanic	Mynhier's	You ain't got no gall	Working on truck



KING, Ronald Stephenson

QUEEN, Joan Wells

1958 ROWAN COUNTY FAIR

A-Team and B-Team



ROW ONE, Left to Right: Kenneth Hall, Bob Hogge, Dora Lee Trent, Mack Hall, Zora Adkins, Matt Cassity, Jackie Stevens. ROW TWO: Coach Allen, Buddie Stidom, Kenneth Johnson, Herbert Ramey, Billy Potter, Dave Markwell, Lawrence Dowdy, Coach Cooper. ROW THREE: Butch Roe, Larry Hardin, G. E. Howard, Tim Hicks, Billy Potter.

A-TEAM ROSTER

Pos.	Name	Ht.	Wt.	Class
C	David Markwell	6-2	172	Sr.
G-F	Herbert Ramey	5-11	180	Sr.
G.	Zora Jeff Adkins	5-8	142	Sr.
F	Bill Potter	5-11	144	Sr.
G.	Jack Hall	5-7	149	Sr.
F	Tony Lands	5-9 1/2	162	Jr.
G	Bobby Hogge	5-6	134	Jr.
F	Kenneth Johnson	5-9 1/2	130	Jr.
F	Matt Cassity	5-8 1/2	128	Soph.
F	Dora Lee Trent	5-6 1/2	135	Soph.
G	Jackie Stevens	5-7	130	Soph.
C	Don Blair	6-0	144	Fresh.

B-TEAM ROSTER

Pos.	Name	Ht.	Wt.	Class
F	Bill Porter	5-7	144	Jr.
C	Ronnie Porter	5-11	135	Soph.
G	Larry Hardin	5-6	96	Soph.
F	Mack Hall	5-8	160	Soph.
F	Larry Lowe	5-9 1/2	133	Soph.
C-F	Lawrence Dowdy	5-11	135	Jr.
C	Kenny Brown	5-10	128	Fresh.
G	Butch Roe	5-6	114	Fresh.
G	James Brown	5-6 1/2	112	Fresh.

HOMER GREGORY AND COMPANY
 Most Modern Band Mill in Eastern Kentucky
 Lumber and Building Materials
 Morehead, Kentucky

Senior Cheerleaders



Rosemary Evans, Kay James, Sally Eldridge, Jean Withrow, Carol Brown.

1958-59 SCHEDULE

Oct. 20	Haldeman	Home	92-32	Jan. 20	Grayson	Home	48-87
Nov. 4	Minerva	Away	77-57	Jan. 23	Wolfe	Away	48-51
Nov. 7	Hitchens	Home	88-48	Jan. 26	Morgan Co.	Away	37-33
Nov. 10	Tolesboro	Away	76-55	Jan. 27	Mayslick	Home	43-34
Nov. 17	Camargo	Away	56-88	Jan. 29	Orangeburg	Home	83-64
Nov. 20	Wolfe Co.	Home	74-57	Feb. 2	Owingsville	Home	71-57
	Scholarship Tournament			Feb. 4	Morgan Co.	Home	63-55
Nov. 21	Morgan Co.	Breck	51-50	Feb. 11	Hitchens	Away	
Nov. 22	Breck	Breck	54-69	Feb. 13	Minerva	Home	
Dec. 2	Haldeman	Away	57-34	Feb. 17	Sandy Hook	Away	
Dec. 4	Mayslick	Away	51-62	Feb. 20	Orangeburg	Away	
Jan. 6	Sandy Hook	Home	42-69	Feb. 21	Owingsville	Away	
Jan. 9	Salyersville	Away	73-74	Feb. 24	Salyersville	Home	
Jan. 13	Montgomery Co.	Away	56-58	Feb. 27	Camargo	Home	

THE SOUTHERN BELLE DRESS SHOP AND STUDIO

Dora and Ward Williams, Owners

Ladies' and Children's Ready-to-Wear

Costume Jewelry and Gifts

Main Street

Morehead, Kentucky

Jr. High Team-Cheerleaders



ROW ONE, Left to Right: Dorinda Jamison, Marilyn Fraley, Ruth Combs, Deanna Triplett, Roberta Hardin. ROW TWO: Sonny Conn, James Scudder, Junior Hall, George Bowman, Billy Kidd, Bobby Caskey, Perry Thompson. ROW THREE: Sterling Spencer, Charles Conn, Russell Howard, Tim Hicks, Robert Moore, Ben Kicks, Coach Allen.



LEFT TO RIGHT: Linda Collins, Katy Porter, Roberta Hosack, Junice Foley.

Band



MAJORETTES: James, Elam, Jones, Adkins, Keeton. ROW ONE: Director, Shipley; Mynhier, Riddle, Richardson, Gregory, Wells, Elam. ROW TWO: Cornette, Scaggs, Coleman, Jennings, White, Greenhill, McKinney, Burnett. ROW THREE: Ramey, Collins, Baker, Caudill, Blair, Hamm, Hamm, Gullett, Lacy. ROW FOUR: Jones, Lambert, Fannin, Branham, Cox, Pennington, Murphy, Lambert, Pennington, Acree, James. ROW FIVE: Green, Kidd, Bradley, Hackney, Parker, Poston, Blair, Caudill, Williams. ROW SIX: Williams, Buckner, Caudill, James, Johnson, Johnson, Brown, Lambert, Tackett.



CAFETERIA WORKERS AND SUPERVISORS: Hunt, Messer, Hyden, Evans.

F.F.A.



Jim Porter, President; Herbie Ramey, Secretary; James Foster, Treasurer; Buddie Stidom, Reporter; Larry White, Sentinel; Scotty Martin, Vice-President; Eddie McDaniel, Clay Banks, Sponsor.

F.H.A.



N.H.S.



ROW ONE: Hargis, Porter, Dulin, Caudill, White, Caudill, Lewis, Reporter; Debord, Parliamentarian; Eldridge, McBrayer, Estill, Sponsor. ROW TWO: Clevenger, Manning, Greenhill, Crager, Treasurer; Lewis, Butler, Franklin, Secretary; Day, Kidd, Dehart. ROW THREE: Debord, Vice-President; Withrow.

F.B.L.A.



SEATED, Warren, Reporter; Debord, Secretary-Treasurer; Lewis, President; Rivers, Vice-President; Eldridge, Parliamentarian. STANDING: Fultz, Prince, Butler, Estill, Sponsor; Morrison, Evans, Hall, Greenhill.

Troupe 698 National Thespians



SEATED: Jones, Publicity; Evans, Treasurer; Stidom, Vice-President; Kidd, President; Dulin, Secretary; James Earl Davis, Sponsor. STANDING: Johnson, Davis, Warren, Lewis, Butler, Crosthwaite, Parker, Lewis, Hall, McBrayer.

Debate and Discussion



ROW ONE: Davis, Sponsor; Fannin, Parker, Kidd, Hall. ROW TWO: Stidom, Debord, Lewis, Combs.

Mask-A-Raders-Nat'l Thespians



ROW ONE: Jones, Publicity; Caudill, Rep.; Evans, Treasurer; Dulin, Secretary; Kidd, President; Stidom, Vice-President; Davis, Sponsor. ROW TWO: Lewis, Adkins, Foley, Hosack, Tackett, Mynhier, Kidd. ROW THREE: Eldridge, Whitt, Ferguson, Fannin, Parker. ROW FOUR: Porter, Lewis, Carpenter, Gullett, Ramey. ROW FIVE: Butler, Warren, Wells, Lewis, Potter. ROW SIX: Cogswell, McKenzie, Hall, Whitt. ROW SEVEN: Cox, Blair, Caudill, Pennington, Johnson. ROW EIGHT: Brown, McBrayer, Stegall, Greenhill, Crosthwaite. ROW NINE: Stidom, Epperhart, Porter, Barracks, Eldridge, Morrison, Davis, Sponsor; Johnson.

Human Relations Conference

Held at
Moorehead State College

November 17, 1958

ROW ONE:

Hall
Lacy
Caudill
Porter
James

ROW TWO:

Young
Haggan
Thomas
Jones
Cooper
Vincell



Senior 4-H



Junior 4-H



Science Club



ROW ONE: White, Sponsor; Hall, Secretary-Treasurer; Eldridge, James, President; Evans, Sponsor. ROW TWO: Eldridge, Nesbitt, Pelfrey, Rep.; Logan. ROW THREE: Newman, Ferguson, Blair, Spenser. ROW FOUR: Eldridge, Chadwell, Hall, Eldridge.

Jr. Conservation



ROW ONE: Kegley, Fannin, Caskey, Conn, Hicks, Spencer, Scudder. ROW TWO: Butler, Barbour, Houk, Ison, Conn. ROW THREE: Plank, Atkinson, Nesbitt, Giles, Watson, Foster, Trent. ROW FOUR: Hall, Kidd, Wells, Grubbs, Hatton, Combs, Newman. ROW FIVE: Workman, Whitt, Quesinberry, Smith. ROW SIX: Collins, Hargis, Matfield, Triplett. ROW SEVEN: Ashford, Porter, Sponsor; Hatton, Vacker.

F. T. A.



SEATED: Roe, Carter, Thomas. STANDING: Dehart, Trent, Kidd, Lewis, Wallace, McGuire, James, Thomas, Blair, Sponsor. NOT PICTURED: Pennington, Elam.

Paper Staff



Black, Caudill, Jennings, Butler, Debord, Parker, Fannin. NOT PICTURED: Ramey, Stidom, Fannin, Caudill, Hall, Crager, Ellington, Lewis, Warren, Caudill. Sponsors: Fowler and Crosthwaite.

Library Club



SEATED: Joyce Caudill, Rosemary Evans, Sue Crager, Janice Caudill, Deloris Baldrige, Phyllis Ramey, James Foster. ROW TWO: Sadie Cox, Mary Jane Greenhill, Bonnie Thomas, Donna Templeman, Virginia Bowman, Sharon Foster, Mary Hood, Andrea Tackett, Louise Trent. ROW THREE: Clyde James, Sally Eldridge, Glenda Thomas, Nancy Hall, Kathy Phillips, Rochella Rivers, Dolly Reed, Donald Ellington, Dorene Roe, Alice Fultz, Hazel Staggs.



OFFICERS

Janice Caudill, Treasurer; Joyce Caudill, President; Sue Crager, Secretary; Rosemary Evans, Vice-President.

The Class of '59 Chooses



CUTEST

Janice Caudill, Jim Porter



POPULAR

Judy Parker, Jim Porter

SHYEST
Geraldine Prince, Hobart Brown



FLIRT

Joyce Caudill, Bobby Butler

BEST LOOKING
Rosemary Evans, Jim Porter



VERSATILE
Judy Parker
Kenny Jones

STUDIOUS
Sue Crager, Hurshel Debord

LIKELY TO SUCCEED
Hazel Kidd, Buddie Stidom



The Class of '59 Chooses



FRIENDLIEST
Janice Caudill, Don Ellington



CITIZEN
Wanda Lewis, Hurshel Debord



WITTIEST
Jane Moore, Herbert Ramey



BEST PERSONALITY
Alice Fultz, Roger Johnson

FAVORITES
Joyce Caudill, Jim Porter



HAPPY-GO-LUCKY
Dean Wells
Don Ellington



COURTEOUS
Loretta Crosthwaite, Kenny Jones



BEST GROOMED
Loretta Crosthwaite, Jim Porter



Honors



VALEDICTORIAN
Wanda Joy Day



VALEDICTORIAN
Judy Parker



SALUTATORIAN
Sue Crager

CAMP MINIWANCA REPRESENTATIVES



DeEtta Lewis



Herbert Ramey



Judy Parker

Camp Miniwanca is a Christian Leadership Camp overlooking Lake Michigan. This camp was founded by the Danforth Foundation. Mr. Danforth of St. Louis, Mo., published a book "I DARE YOU". The profits from the sales of this book go to the cause of youth. Mr. Danforth challenges youth to reach out - to try - to strive to be somebody. Thousands of boys and girls spend their vacation at this camp.



Billy Fannin
Second Place



Ronald Dehart
Third place

CONSERVATION ESSAY WINNERS

Billy Fannin and Ronald Dehart were selected by the Rowan County Soil Conservation District as winners in the annual Soil Conservation Essay Contest sponsored by the Courier-Journal, Louisville Times, and Radio Station WHAS and the Rowan County Soil Conservation District. The first and second place essays were submitted to the Courier-Journal, Louisville Times, and Radio Station WHAS for competition in the state contest.

STUCKEY MC BRAYER FUNERAL HOME
24-Hour Oxygen Equipped Ambulance Service
Phone ST4-4834
155 Main Street Morehead, Kentucky

Honors

GIRLS' STATE

Sponsored by the
American Legion Auxiliary

BOYS' STATE

Sponsored by the
American Legion



Phyllis Warren



Peggy Hamm



Nancy Hall



Roger Johnson



James Foster



Raymond Conn



Troy Waddell

F. F. A. LEADERSHIP TRAINING CAMP, HARDINBURG, KENTUCKY

R. C. H. S. BOYS WHO ATTENDED CAMP

Larry White
Lionel Workman
Daniel Workman
Joe White
James Foster
Scotty Martin
Vaughn Dean



The cafeteria at
Camp Hardinsburg



Scotty Martin with his
registered dairy calf.



Herbert Ramey with his Reserve
F. F. A. litter at the Feeder Pig
Show.



Jim Porter receiving the Showman-
ship Trophy for top showman.

Honors



Charlene Eldridge
First



Anna Eldridge
Second



Ronald Dehart
Second



Barbara Ann Caudill
Third



DeEtta Lewis
Third



Jane Moore
Third



Hazel Kidd
Third



Sue Crager
Third

This contest was sponsored by the Rowan County Parents Association.



R.C. Fair Winners



ROW ONE: Larry Cooper, Judy Cornette, Larry Waddell, Linda Epperhart, Calvin Hunt, Deanna Triplett.
ROW TWO: Joan Wells, Danny James, Wanda White, Chester Binion, Rosemary Evans, Jim Porter.



Wanda White (First), Joan Wells (Second), Rosemary Evans (Third)
Winners of the 1958 Rowan County Fair King and Queen Contest.

R.C. Fair



ROWAN COUNTY HIGH SCHOOL FLOAT FOR FAIR

A SCENE FROM THE SENIOR PLAY, "A MAN CALLED PETER"



JUNIOR KING AND QUEEN FOR FAIR: Danny James and Wanda White. Randy Wells, Interviewer.



Senior Play

SENIOR PLAY

A MAN CALLED PETER
by
Catherine Marshall

CAST

Kenny Jones
Judy Parker
Larry Kegley
Susan Caudill
Carmie Evans
Billy Potter
Roger Johnson
Jim Porter
Kazel Kidd
Wilma Butler
DeEtta Lewis
Wanda Lewis
Connie Fannin
Herbert Ramey
Buddie Stidom

Directed by James E. Davis

October 28, 29, 30, 1958

Morehead Grade School



Tri-Hi-Y & Hi-Y

ROW ONE
Anna Eldridge
Grace Hall
Ernestine Brown

ROW TWO
Janice Caudill
Rochella Rivers
Jewell Sue Erwin
Wanda White
Joyce Caudill

ROW THREE
Alice Fultz
Marcella Porter
Nancy Hall

ROW FOUR
Don Ellington
Bobbie Butler

SPONSOR: Ward Williams



YEARBOOK BOOSTERS

Wanda White
Bethel Hall
Linda Collins
Winford Crosthwaite
Henry H. Roark
W. D. Patton
George Hill
James McKenzie
Mr. and Mrs. Russell Barker
Mr. and Mrs. Curley Barker
Nelle Kash
Donald J. McBrayer

FROSTY'S BARBER SHOP
201 Main Street
Morehead, Kentucky



A Scene from the Senior Play

Yearbook Staff



ON FLOOR: Charles Roberts, Larry Black, Jim Porter. SEATED: Janice Caudill, Eleanor Stegall, Wilma Butler, Mary Jane Greenhill, Sue Crager, Phyllis Warren, Nancy Hall, Joyce Caudill. STANDING: Vicy Glover, Rochella Rivers, Betty Coldiron, Jane Moore, Wanda Lewis, Robert Caudill, Grace Crosthwaite.

YEARBOOK STAFF

EDITOR

Sue Crager

ASSISTANT EDITOR

Mary Jane Greenhill

BUSINESS MANAGER

Phyllis Warren

CLASSES

Eleanor Stegall

Jane Moore

Wanda Lewis

Robert Caudill

Loretta Crosthwaite

TYPISTS

Larry Black

Mary Jane Greenhill

Jane Moore

Jim Porter

Loretta Crosthwaite

SPONSOR

Grace Crosthwaite

SALES

Nancy Hall

Betty Clevenger

Joyce Caudill

Jim Porter

CLUBS

Wilma Butler

Janice Caudill

Wanda Lewis

ATHLETICS

Charles Roberts

ADVERTISING

Jim Porter

LAYOUTS

Rochella Rivers

Vicy Glover

Gaynes Law

Nancy Hall

Joyce Caudill

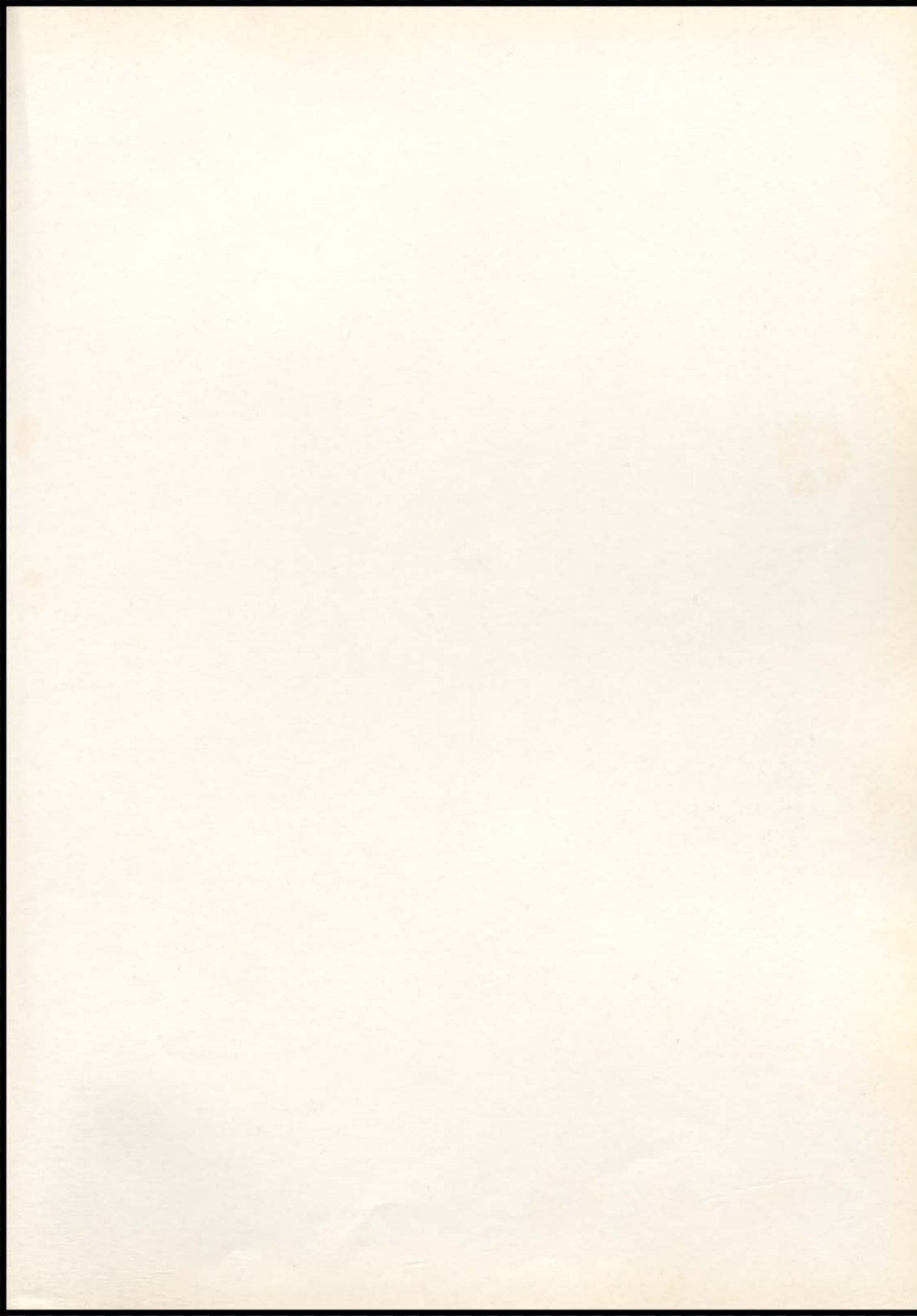
Sue Crager

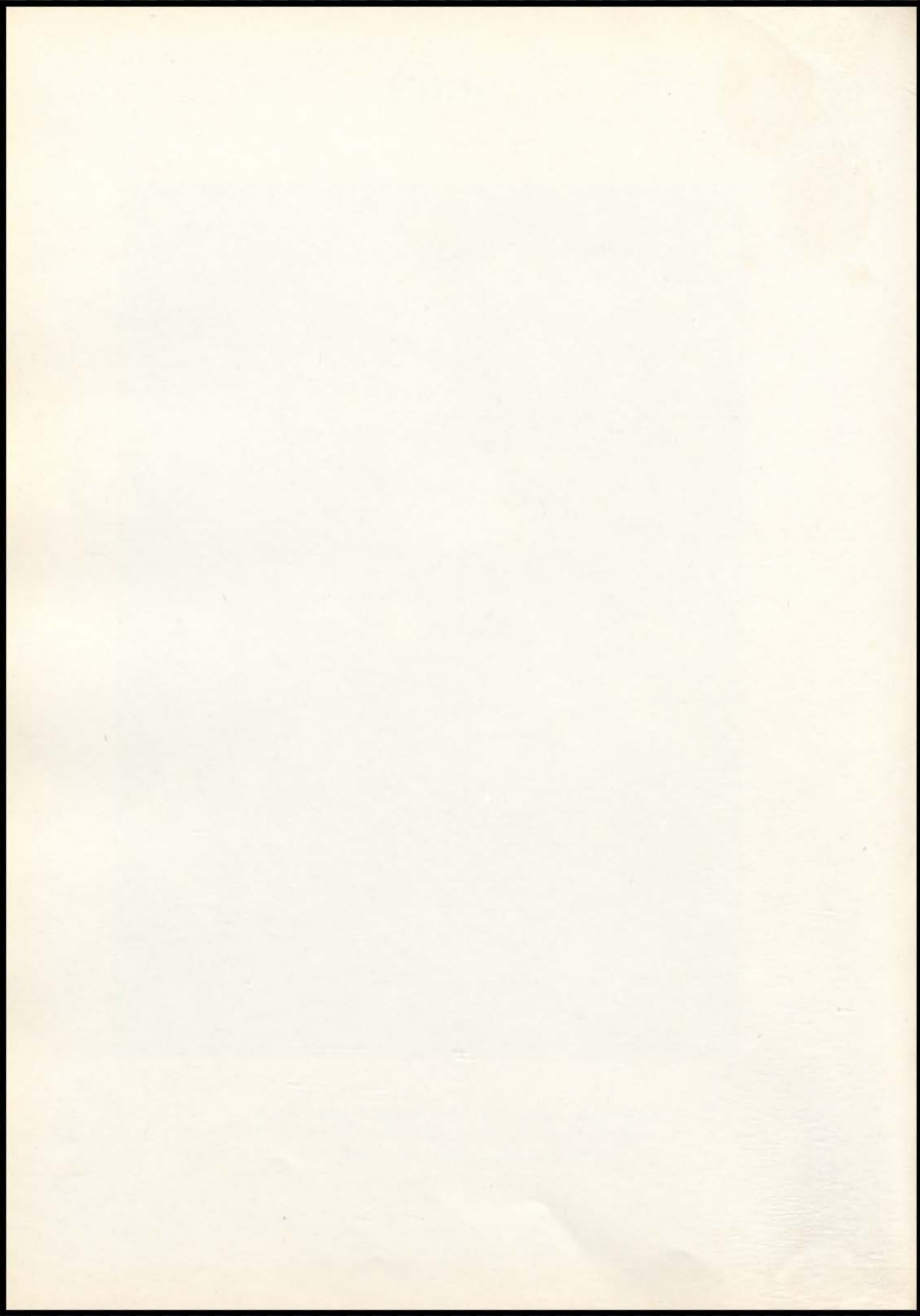
This our YEARBOOK physically is a survey of pictures and school activities, but mentally it brings back the golden memories that will echo through the halls of our Alma Mater for years to come.

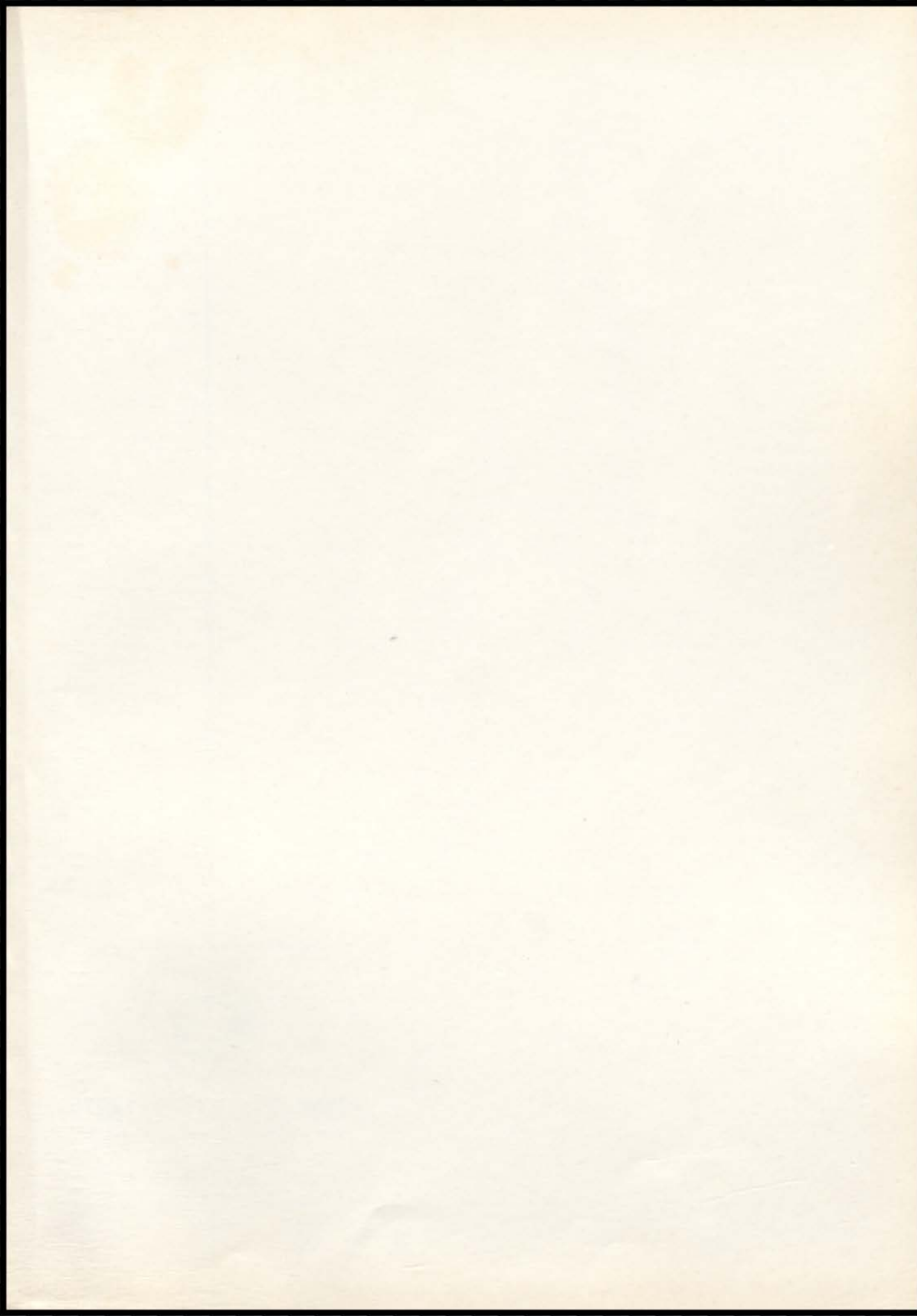
Finis

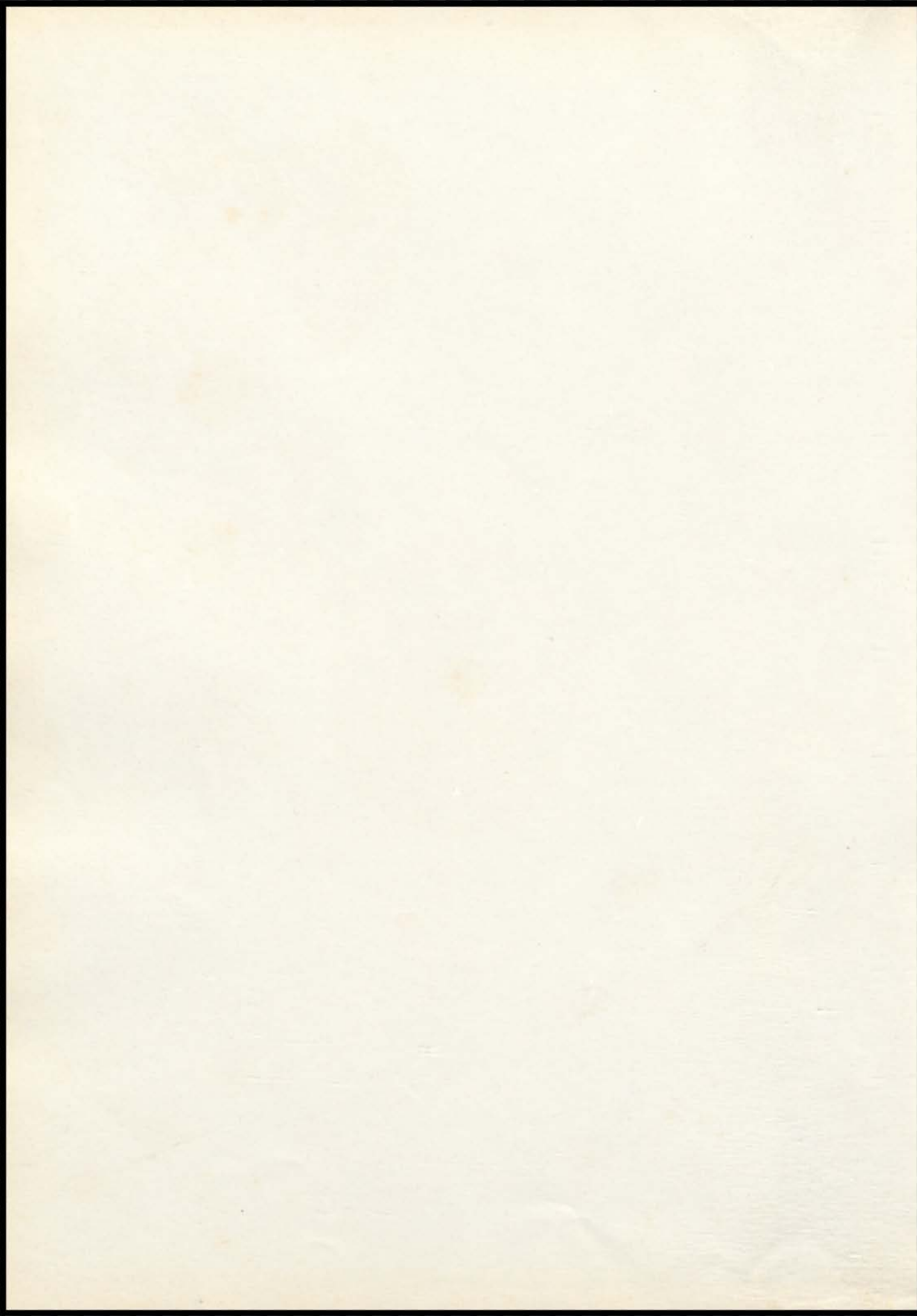


As we, the Senior Class of 1958-1959, leave and travel down the Road of Life, we hope these pages will carry many fond memories for you of your school days at the Rowan County High School.











INTER-COLLEGIATE PRESS

Publishers - Cover Manufacturers - Book Binders

FACTORY - HOME OFFICE

Kansas City

PRINTED IN U. S. A.

