

WANTED

Classified Advertising Rates
No Classified Ads Accepted After 12 Noon Tuesday

FOR SALE
Modern 6 room home, garage, central heat, brick...

FOR SALE
7-room modern residence, 2 1/2 car apartment house...

USED CARS
59 CHEVROLET
57 DE SOTO
56 FORD

FOR RENT
Furnished apartments. Call State 4-4213.

FOR RENT
Modern 3-room furnished apartment, all private...

FOR RENT
Four-bedroom house on Wilson Avenue State 4-5488.

FOR RENT
Modern, three bedroom, equipped kitchen...

FOR RENT
Four-room furnished house and one room apartment...

FOR RENT
One 3-room furnished apartment and one 4-room unfurnished apartment...

FOR RENT
Modern, three bedroom, equipped kitchen...

FOR RENT
Four-room furnished house and one room apartment...

FOR RENT
One 3-room furnished apartment and one 4-room unfurnished apartment...

FOR RENT
Modern, three bedroom, equipped kitchen...

FOR RENT
Four-room furnished house and one room apartment...

FOR RENT
One 3-room furnished apartment and one 4-room unfurnished apartment...

FOR RENT
Modern, three bedroom, equipped kitchen...

FOR RENT
Four-room furnished house and one room apartment...

FOR RENT
One 3-room furnished apartment and one 4-room unfurnished apartment...

FOR RENT
Modern, three bedroom, equipped kitchen...

FOR RENT
Four-room furnished house and one room apartment...

FOR RENT
One 3-room furnished apartment and one 4-room unfurnished apartment...

FOR RENT
Modern, three bedroom, equipped kitchen...

FOR RENT
Four-room furnished house and one room apartment...

FOR RENT
One 3-room furnished apartment and one 4-room unfurnished apartment...

FOR RENT
Two-bedroom home with a trailer in Tolliver Addition...

FOR RENT
Five-room furnished apartment. See Frank Hwang at the Big Store...

WANTED
Man or woman to do upholstery work. Must be experienced...

WAITRESSES WANTED
Want to employ 2 experienced waitresses. Mountain View Truck Stop...

\$100 REWARD
For any information which results in the recovery of the diamond ring taken from V.J. Jewelry Store...

GOOD TOPSOIL and gravel for sale. Topsoil in White, phone State 4-4274.

KIDNEY DANGER SIGNALS
Getting up, burning, frequent or scanty flow, leg pain or backache may be warning of functional kidney disorders.

FOR SALE
140-acre Bath County, Kentucky farm. This farm is on State Highway 36...

TREAT COLDS IN ONE HOUR
Take 3 doses BQ-6 tablets 1/2 hour apart. In 15 MIN. MORE don't have to be washed.

BALDWIN PIANOS & ORGANS
Stock values in new and used instruments. Easy payment plan.

FOR RENT
Furnished apartments. Call State 4-4213.

FOR RENT
Modern 3-room furnished apartment, all private...

FOR RENT
Four-bedroom house on Wilson Avenue State 4-5488.

FOR RENT
Modern, three bedroom, equipped kitchen...

FOR RENT
Four-room furnished house and one room apartment...

FOR RENT
One 3-room furnished apartment and one 4-room unfurnished apartment...

FOR RENT
Modern, three bedroom, equipped kitchen...

FOR RENT
Four-room furnished house and one room apartment...

FOR RENT
One 3-room furnished apartment and one 4-room unfurnished apartment...

FOR RENT
Modern, three bedroom, equipped kitchen...

FOR RENT
Four-room furnished house and one room apartment...

FOR RENT
One 3-room furnished apartment and one 4-room unfurnished apartment...

FOR RENT
Modern, three bedroom, equipped kitchen...

FOR RENT
Four-room furnished house and one room apartment...

FOR RENT
One 3-room furnished apartment and one 4-room unfurnished apartment...

FOR RENT
Modern, three bedroom, equipped kitchen...

FOR RENT
Four-room furnished house and one room apartment...

FOR RENT
One 3-room furnished apartment and one 4-room unfurnished apartment...

FOR RENT
Modern, three bedroom, equipped kitchen...

FOR RENT
Four-room furnished house and one room apartment...

FOR RENT
One 3-room furnished apartment and one 4-room unfurnished apartment...

Political Announcements
Beginning at a point on high point of East ridge of Evans Branch Reservoir...

Prison Camp Is Opposed
Although two Georgetown, Ky. organizations have adopted resolutions opposing construction of a branch of the County Jail...

The Major Problem Of Khrushchev
Nothing can be more important to America than that well-being of the United States...

REPUBLICAN PARTY
FOR CIRCUIT COURT CLERK
W. M. CHERY, BRADLEY LOTTIE M. POWERS

FOR RENT
Furnished apartments. Call State 4-4213.

FOR RENT
Modern 3-room furnished apartment, all private...

FOR RENT
Four-bedroom house on Wilson Avenue State 4-5488.

FOR RENT
Modern, three bedroom, equipped kitchen...

FOR RENT
Four-room furnished house and one room apartment...

FOR RENT
One 3-room furnished apartment and one 4-room unfurnished apartment...

FOR RENT
Modern, three bedroom, equipped kitchen...

FOR RENT
Four-room furnished house and one room apartment...

FOR RENT
One 3-room furnished apartment and one 4-room unfurnished apartment...

FOR RENT
Modern, three bedroom, equipped kitchen...

FOR RENT
Four-room furnished house and one room apartment...

FOR RENT
One 3-room furnished apartment and one 4-room unfurnished apartment...

FOR RENT
Modern, three bedroom, equipped kitchen...

FOR RENT
Four-room furnished house and one room apartment...

FOR RENT
One 3-room furnished apartment and one 4-room unfurnished apartment...

FOR RENT
Modern, three bedroom, equipped kitchen...

FOR RENT
Four-room furnished house and one room apartment...

FOR RENT
One 3-room furnished apartment and one 4-room unfurnished apartment...

FOR RENT
Modern, three bedroom, equipped kitchen...

FOR RENT
Four-room furnished house and one room apartment...

FOR RENT
One 3-room furnished apartment and one 4-room unfurnished apartment...

FOR RENT
Modern, three bedroom, equipped kitchen...

FOR RENT
Four-room furnished house and one room apartment...

FOR RENT
One 3-room furnished apartment and one 4-room unfurnished apartment...

FOR RENT
Modern, three bedroom, equipped kitchen...

FOR RENT
Four-room furnished house and one room apartment...

FOR RENT
One 3-room furnished apartment and one 4-room unfurnished apartment...

100 YEARS AGO THIS WEEK
Civil War in Kentucky
Steel with three companies overtook the rear guard at Camp Perry...

FOREIGN AID TO ALLIES
American officials are reported warning the European allies that if they allow French President de Gaulle to resign...

FOR VETERINARIAN SERVICE
B. A. BALL
Call State 6-9171

FOR RENT
Furnished apartments. Call State 4-4213.

FOR RENT
Modern 3-room furnished apartment, all private...

FOR RENT
Four-bedroom house on Wilson Avenue State 4-5488.

FOR RENT
Modern, three bedroom, equipped kitchen...

FOR RENT
Four-room furnished house and one room apartment...

FOR RENT
One 3-room furnished apartment and one 4-room unfurnished apartment...

FOR RENT
Modern, three bedroom, equipped kitchen...

FOR RENT
Four-room furnished house and one room apartment...

FOR RENT
One 3-room furnished apartment and one 4-room unfurnished apartment...

FOR RENT
Modern, three bedroom, equipped kitchen...

FOR RENT
Four-room furnished house and one room apartment...

FOR RENT
One 3-room furnished apartment and one 4-room unfurnished apartment...

FOR RENT
Modern, three bedroom, equipped kitchen...

FOR RENT
Four-room furnished house and one room apartment...

FOR RENT
One 3-room furnished apartment and one 4-room unfurnished apartment...

FOR RENT
Modern, three bedroom, equipped kitchen...

FOR RENT
Four-room furnished house and one room apartment...

FOR RENT
One 3-room furnished apartment and one 4-room unfurnished apartment...

FOR RENT
Modern, three bedroom, equipped kitchen...

FOR RENT
Four-room furnished house and one room apartment...

FOR RENT
One 3-room furnished apartment and one 4-room unfurnished apartment...

FOR RENT
Modern, three bedroom, equipped kitchen...

FOR RENT
Four-room furnished house and one room apartment...

FOR RENT
One 3-room furnished apartment and one 4-room unfurnished apartment...

FOR RENT
Modern, three bedroom, equipped kitchen...

FOR RENT
Four-room furnished house and one room apartment...

FOR RENT
One 3-room furnished apartment and one 4-room unfurnished apartment...

FOR RENT
Modern, three bedroom, equipped kitchen...

Midland Trail Garage
"Pioneers in Rowan County Transportation"

PEOPLES BANK OF MOREHEAD
STOP WONDERING: START-PAYING WITH CHECKS, DRAWN ON US!

ORDINANCE PROPOSING TO WIDEN ADDITIONAL TERRITORY TO THE CORPORATE LIMITS OF CITY OF MOREHEAD, KENTUCKY. WHEREAS, residents, citizens and property owners in Tolliver Addition and adjacent and contiguous sections near present corporate limits of Morehead, Kentucky, have petitioned for an extension of the corporate limits...

SCHOOL BILL CRITICIZED
President Kennedy's attempt to urge supporters of aid to education has touched off a firestorm in Congress. The 24 separate pro-federalism bills...

The Best Place To Buy
We Handle The Best Cars At The Lowest Prices SELECT MERCHANDISE AT WHOLESALE
1957 Pontiac, 1953 Dodge, 1960 Rambler, 1955 Plymouth, 1954 Chevrolet, 1951 Chevrolet, 1950 Ford

BRING HOME the BACON

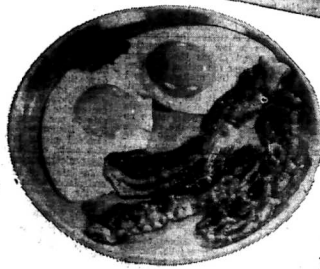
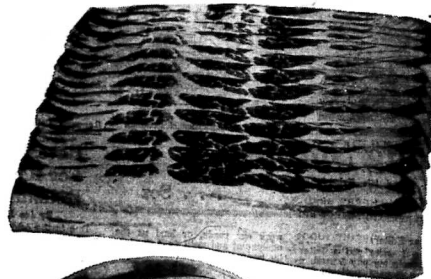
AND THE

Much More
SLICED
Bacon
3 lbs. \$1

SAVINGS, TOO!



This week we are featuring for you ladies who push the carts an outstanding variety of bacons with the brand names you know and trust. You'll enjoy their distinctive smoked flavor and ease of preparation. Whichever your choice, you will be completely satisfied at the first serving. So start the day off with your family's favorite. You'll save more, too, by shopping at IGA.



CHOOSE FROM TOP QUALITY BRANDS

Tabletite, Swift Premium, Mellwood, Camp
SLICED

- Bacon** lb. **45¢**
- Pork Liver** lb. **19¢**
- FROZEN
Cube Steaks 2-oz. Each **10¢**

TABLETITE GRADE 'A'
MEDIUM
Eggs
39¢
Doz.

BACON TASTES BEST WITH PANCAKES!

IGA BUTTERMILK
Pancake Mix 1-lb. Box **15¢**



- FOLGER'S COFFEE 3-lb. Canister **\$1.49**
- JIFF PEANUT BUTTER 28-oz. **69¢**
- IGA PEACH PRESERVES 29-oz. **39¢**
- IGA APRICOT PRESERVES 20-oz. **39¢**
- IGA STRAWBERRY PRESERVES 20-oz. **49¢**
- TABLETITE MARGARINE lb. **4 for 89¢**
- BLUE BONNET MARGARINE lb. **25¢**
- TABLETITE BUTTER 1-lb. Quarters **69¢**
- IGA SWEET MIDGET PICKLES 16-oz. **39¢**
- IGA HAMBURGER SLICED DILL PICKLES 16-oz. **19¢**

Heinz
TOMATO SOUP
10-oz. Can **10 for 79¢**

IGA Frozen
PIES
Apple - Cherry - Peach
3 for \$1

Folger's
INSTANT COFFEE
10-oz. Jar **89¢**

IGA Fancy
FRUIT COCKTAIL
303 Can **19¢**

Stokely
Pitted
CHERRIES
300 Can **2 for 29¢**

- PET MILK Tall Cans **3 for 39¢**
- OVEN FRESH HAMBURGER BUNS 8 Pack **23¢**
- OVEN FRESH PARKER HOUSE ROLLS **35¢**

TABLETITE BUTTERMILK
Biscuits



6 for 39¢

TROPICAL TREAT...LUSCIOUS TOP...

Bananas
2 lbs. 25¢



- TABLEFRESH BREAD 1-lb. Loaf **2 for 25¢**
- OVEN FRESH CINNAMON ROLLS Reg. 35¢ Value **29¢**

Allen's
IGA

8-6 Mon.-Thurs.
8-3 Fri.-Sat.
FOODLINER

Carrots 1-lb. Cello **10¢**

- KRAFT MAYONNAISE Qt. **69¢**
- KRAFT FRENCH DRESSING 16-oz. **43¢**
- HEINZ CHICKEN NOODLE SOUP 10-oz. Can **2 for 27¢**
- TABLETITE SALAD OIL 48-oz. **69¢**
- ROBIN HOOD—Plain And Self-Rising Flour 10-lb. **89¢**

- GREEN Peppers Each **5¢**
- LOUISIANA Yams lb. **10¢**
- GOLDEN DELICIOUS Apples 4-lb. Bag **49¢**
- FRESH Parsnips 1-lb. Cello **19¢**
- CRISP Celery Large Stalk **19¢**
- SNO-WHITE Cauliflower Each **39¢**

WANTED... freedom from need.

WANTED... the simple right to dignity.

WANTED... nothing... a blanket... the certainty that tomorrow this child of war wracked Aia will have a bowl of milk and a warm meal.

WANTED... your help to make this come true.

GIVE through your church. Help provide the money and materials.

Church World Service needs over \$100,000 each year to assist millions of needy, strength and a new way of life. GIVE during ONE GREAT HOUR OF SHARING AT YOUR CHURCH ON SUNDAY, MARCH 24th.

HOBERT JOHNSON

— Barber —

Location — Main Street
Over Pasquales Pizza Shop

RUFFY TWINS

LOOKS LIKE POP WILL USE THAT POLICY OF HIS WITH

Wolfford Insurance Agency

Phone State 4-4494

George Caudill Bldg.
Morehead, Ky.

MOVING or HAULING

FOR LOCAL or LONG DISTANCE

— CALL —

Blair Transfer & Storage

(Formerly Calvert Bros. Transfer)

Cargo Insurance MOREHEAD, KY.

Phone State 4-5902

Complete Ambulance Service

Oxygen Equipped

"Equipped to Serve You"

Member of Kentucky Funeral Director's Burial Association

— Authorized to Issue —

Burial Insurance Contracts Issued by COMMONWEALTH LIFE INSURANCE CO.

LANE FUNERAL HOME

Phone ST 4-4983 Morehead, Ky.

Innerspring Mattress And Box Spring

Mattresses overbought on these fine mattresses and box springs. Our loss, your gain. We're letting them go at exactly

1/2 PRICE

50-LB. COTTON MATTRESS \$9.95	30 Gal. Gas Hot WATER HEATER Automatic, Glass Lined, 1 Year Warranty \$49.95	35 Foot DROP CORD A Martindale Special \$1.00	Two Door UTILITY CABINET You Can't Beat This Price \$9.95
Top Grade PAINT Save Plenty On This \$3.95 a gallon	64" Double Bowl SINK A Close Out \$89.95	Everybody knows it's always a bargain at Martindale's on quality merchandise. But, these bargains are EVEN BIGGER.	

MARTINDALE FURNITURE CO. ST4 4-4470 EAST MAIN

Ramblin' Thru Willibs

A Trickle Of Oil Can Cause A Lot Of That 'Get Rich' Commotion

By **Clinnie Hollen**

My pore are all excited again. Every pore is excited near we word of mouth. Then oil people come in among us and they drill them big deep holes and they come out with that oil. Usually it ain't much, but when it is, they get thru talking about it, them Texans would have to take off their big hats to see if it were so. A trickle of oil can grow to nearly a hummer barrel per day with just a few days within our conversations. We see oil squishing up out of them holes and a large pressure machine blows the river water into that oil sand way beneath the surface. Rich we are going to be if our outlooks proves to be true. Some times our outlooks fades away only to pop up again several months later. Cadillac will be our means of transportation and we will have TV's in every room and we will smoke ready rools and go to church where they play electric organs. We will stop wearing Rag Shaking Stone garbs and buy of the best light legged britches that can be made by New Yorkers. We will pressure our favorite comedies from the officials and not have to sign up for same. This is going to 'mount to something' some folks like.

Already them oil rigs are beat-out to the ground. One well was sunk on the late Arch Lutes farm near the home of Miss Alice Lutes. Excitement and rumors flew among us concerning this well. Oil was hit! A big coring machine was brought out and a diamond drill went thru the oil bearing sand to bring out a core. The core was brought out and we even went to see this earth core. We could see and smell the oil in the stone. It was there. Expert oilmen will see a piece of this core and tell us how much oil there is per acre. We hope it is much. But the core looked so good from this well that much TNT was fetched out and dropped into the well and from reports we have been given this well is now ready to run over with crude oil. We will be the commodity line at the relief house and this will help to fill our commodity poke to the well and from reports we have been given this well is now ready to run over with crude oil. We will be the commodity line at the relief house and this will help to fill our commodity poke to the well and from reports we have been given this well is now ready to run over with crude oil.

There will be rich among us pore. We will be pleased with this well. With several of our neighbors becoming rich, it could break through. We will be rich among us pore. We will be pleased with this well. With several of our neighbors becoming rich, it could break through. We will be rich among us pore. We will be pleased with this well. With several of our neighbors becoming rich, it could break through.

The government which can discover how to take all profit from warfare will show the world how to maintain peace.

Highway fatalities will decrease in proportion to the increase in car insurance and courtesy of automobile drivers.

People would be healthier if they had a mind for it.

Music Student Is Member Of Orchestra

Charles Lodeky, a sophomore music major at Morehead State College, is preparing to start his second season with the American Wind Symphony Orchestra this summer.

Lodeky has been studying and performing on the percussion instruments for 13 years. While in the fifth grade, he selected to be a member of the high school's marching and symphonic band.

During the years that followed, he performed in many statewide festivals; and, in 19th grade was selected to perform with the Pittsburgh Symphony Orchestra.

He has received superior ratings in the Pennsylvania's Forensic Music Contests, along with his scholastic symphonic band which has received superior ratings for nine consecutive years.

Experienced Performer

Lodeky has performed with such organizations as the: Williamsburg Civic Symphony Orchestra, and Junior Orchestra; East Hills Civic Symphony; the Pittsburgh Philharmonic Orchestra; and he has appeared in a concert with the Air Force Dance Band in premiere of a modern jazz composition featuring the execution of five timpani carrying the melodic line.

The American Wind Symphony Orchestra, which will be appearing in a tour of Europe this summer, is an organization of top-ranked musicians from leading conservatories, universities and colleges.

The musicians are selected on the basis of audition, usually 2-3 hours in duration. The chief function of the orchestra is to commission composers to write music especially for the wind and percussion instruments.

The founder and conductor of the orchestra is Robert Austin Boudreau.

The wind symphony travels through sections of the U.S. and Europe. Following the wind symphony's summer season, Lodeky will depart to the National Music Conservatory of Mexico City, along with his colleague, Robert S. Thompson, to enter the field of composition.

Not everyone elected to public office is acquainted with the theory or principles of good government.

The government which can discover how to take all profit from warfare will show the world how to maintain peace.

Highway fatalities will decrease in proportion to the increase in car insurance and courtesy of automobile drivers.

People would be healthier if they had a mind for it.



Future Timber For Kentucky

ANOTHER LOAD OF YOUNG TREES to reforest idle Kentucky land is inspected by Gov. Bert Combs. State Forestry Division Director Gene Butcher (right) shows Governor Combs the fibrous root systems of the year-old pine tree seedlings. Looking on is State Conservation Commissioner J. O. Matlock. At the Governor's direction Butcher has prepared a plan to speed-up the state's reforestation rate from the planting of 16 million tree seedlings in 1962 to the planting of 24 million seedlings by 1967—a 50 per cent increase.

Gov. Combs Announces Plans To Speed Up Reforestation

"Planting trees now will make Kentucky a greener, cleaner land," Gov. Bert Combs declared in announcing a speeded-up program of reforestation in the state.

Because open and eroded areas in Kentucky are still so numerous and the planting job so big, Governor Combs recently asked State Conservation Commissioner J. O. Matlock to direct the Forestry Division to begin a special project to encourage more tree planting during the next five years.

Combs pointed out that every acre planted now will yield forest crops that will mean jobs and income to tree growers at harvest time. "Fine trees may be harvested for use as pulpwood in approximately 17 years. If used for sawlog timber the trees will need to remain in the forest for 40 to 60 years. At intervals during this period thinnings are made which produce various forest products—sawlogs, pulpwood and poles."

The state is also cooperating with the Tennessee Valley Authority's tree planting activities in Graves, Callaway, Lyon, Trigg, Livingston, Marshall, and McCracken counties as a part of the reforestation speed-up work.

Combs said: "State land owners have been planting forest tree seedlings for over 30 years." Matlock pointed out, "but at the present reforestation rate, it would be another 40 years before treelands are properly reforested."

In 1962, 16 million seedlings were distributed to tree farmers and owners of land suitable for reforestation by the Forestry Division from its three seedling nurseries. Gene Butcher, Forestry Division director, estimates 14 million acres in Kentucky should be reforested and has prepared a plan to speed-up the present rate.

"In areas of the state where planting of hardwood seedlings, such as oak, yellow poplar, sycamore, red gum, and black walnut can be recommended, a 5 per cent return on money invested can be expected on a 50-year rotation," Nadler added.

The Forestry Division's staff of 56 foresters are available to help landowners by giving information on how to plant and manage their woodlands. Butcher says such help may be obtained at state forestry offices in these Kentucky cities: Morehead, Paintsville, Prestonsburg, Hazard, Pimelville, Frankfort, Campbellsville, Elizabethtown, Madisonville, Mayfield, Liberty, Burksville, Leitchfield, Middlesboro, Russellville, Somerset, Jackson, Whitesburg, Williamsburg and Harlan.

Gov. Combs has urged all interested governmental agencies and private groups to help in this reforestation effort. Officials of the Forestry Division are planning to speak before civic groups throughout the state, describing the reforestation speed-up program in detail.

SPACEPLANE by 1970

The Defense Department is backing research that may produce by the late 1960's or early 1970's a pilot spaceplane able to take off from an airfield, fly into orbit and land. The Air Force described this as a plane with a variety of uses: to intercept, inspect and perhaps knock down hostile or suspicious satellites and as a platform for potting manned or unmanned United States satellites into orbit.

Shop The Classified Ads

First Valentine Queen Chosen At Morehead Roller Rink



QUEEN AND COURT—H. M. Meadows, president of Morehead Roller Rink, is pictured with the Valentine Queen and members of her court at a party held last Thursday at the local skating rink. Pictured to left of Meadows is Judy Farmin, the queen. Other members of the court were Donna Wells, second place, Jestylin Johnson and Caroline Frazer, who tied for third place.

Editor's Pen —

(Continued from preceding page)

MANEUVERING — Mrs. Corvis Stacey, West Liberty, and John Raymond Turner, had a real feuding race two years ago for State the most amusing. Latest in the Senate. The Turner came up with from Frankfort is that Wolfe County will be taken from our Senatorial district and put in the one with Breathitt County and Morgan County will join Mason, Rowan, Fleming, Bath and Menifee to comprise a new district. It would probably be best for taxpayers. Senator Ed Kelly, Flemingsburg, is up for re-election this year. Also from the State Capitol comes the usually reliable word that the Carter-Lewis-Green-up-Elliott Senatorial district will remain as is... efforts to trade GOP Lewis for Rowan may have one down the drain. Another informant is convinced this special session will end up in disagreement and pass nothing, leaving the restricting to the courts. It would probably be best for taxpayers if they did just that.

PLEASURE — Do not bite at the bait of pleasure till you know there is no hook beneath it.— Thomas Jefferson.

OVC WINNER VS. LOYOLA — Here's another "Morehead News scoop!" The winner of the Ohio Valley Conference will play Loyola of Chicago in the Mid-East Regional on Mar. 11 in Evansville, Ill. The other game of the first round will pit Notre Dame against the Mid-American Conference winner. We'll even go so far as to predict that the Notre-Dame-Mid-American Conference winner game will be held at 7:30 p.m. and the OVC-Loyola game at 8:30 in McGraw Hall on the Northwestern University campus.

You have a right to your own life if you have the courage to live it.

Calling All . . .

JUNIOR BOWLERS

Boys And Girls

League Now Forming . . .

Saturdays 9 A.M. - 11 P.M.

Boys and Girls with school make-up time on Saturdays can participate at 2 p.m.

BANTAM LEAGUE	-----	Ages 8-12
JUNIOR LEAGUE	-----	Ages 12-15
SENIOR LEAGUE	-----	Ages 15-19

All classes will have direct supervision training. Films will be shown. Leagues will be under supervision of American Junior Bowling Congress.

ANOTHER STEP IN YOUR YOUTH EDUCATION AND PHYSICAL FITNESS PROGRAM PRESENTED BY

MOREHEAD LANES

"Your Country Club Of Bowling"

FORMAL OPENING

Of The ALL NEW PIERCE'S 5c & 10c STORE

LOCATED IN THE NEW SHOPPING CENTER IN HEART OF MOREHEAD

OPENING IS THURSDAY

Store Opens 9:00 A.M., Thursday
8:00 A.M. Friday And Saturday

Dwight Pierce, Owner - Manager

Everything New . . .

Large Parking Lot . . .

Mr. Pierce has more than 30 years experience in business - 27 years in Morehead - and is qualified to bring to Morehead a completely supervised Variety Store with experienced and courteous employees. Mr. Pierce's aim is to bring to Morehead top quality merchandise with lowest possible prices. Read this ad for proof of the low-low prices you can expect to find at Pierce's.

It's completely new from wall-to-wall - new building, new fixtures, new merchandise. This store is one of the most beautiful and modern Variety Stores in the state of Kentucky. It's operation will be Self Service with courteous sales personnel to assist you at all times. It will be your pleasure to shop in this modern Variety Store.

The store has an entrance on Main Street and Second Street. Customers can use the large parking lot at the rear of the store facing Second Street while shopping at Pierce's. This is just another of the many conveniences you'll find at the All-new Pierce's 5c & 10c Store.

FREE GIFTS
For Everyone During
FORMAL OPENING
ASK FOR FREE TICKET ON
PORTABLE TV SET
GRAND DOOR PRIZE
• NOTHING TO BUY
• YOU MUST BE PRESENT TO WIN
Drawing Will Be 6:00 P.M.
Saturday At Store
**FREE GIFTS FOR
DAD, MOM AND KIDDIES**

FREE - FREE - FREE - FREE TOYS AND BALLOONS For The Kiddies		First Quality NYLONS 10¢ Pr. Limit One Pair To Customer		FREE - FREE - FREE - FREE POTTED PLANTS To First 300 Customers	
LADIES' GOOD QUALITY PANTIES 23¢ Pr. OR 5 Prs. \$1.00	TRICOT HALF SLIPS Assorted Sizes And Colors Only 47¢ Ea.	BIRDSEYE DIAPERS Doz. \$1.47	BEDSPREADS • Assorted Color • Good Quality - ONLY - \$2.87	COLGATE TOOTH PASTE Reg. 53¢ - SPECIAL - ONLY - 34¢	HERSHEY CANDY BARS Reg. 5¢ - SPECIAL Ea. 3¢ 5 for 10¢ Limit 5 To Customer
SMALL THROW RUGS - ONLY - 48¢	172 COUNT FOX CROFT BED SHEETS 81 x 99 \$1.66 Ea.	LARGE DISH DRAINER Reg. \$1.00 - SPECIAL 59¢	GOOD QUALITY BROOMS Reg. \$1.00 - SPECIAL 63¢	OVER-THE-DOOR GARMENT HANGER Reg. 25¢ - SPECIAL Ea. 16¢	CHEWING GUM - ALL BRANDS - 3 for 10¢
KLEENEX 400 COUNT - ONLY - 19¢ Box Limit To Customer	KOTEX REGULAR 12's - ONLY - 29¢ Limit To Customer	PLASTIC WATER PITCHER - ONLY - 33¢	SHOE BAG Reg. \$1.00 - SPECIAL 73¢	LIGHT BULBS 40 - 75 - 100 Watt - ONLY - Ea. 16¢	WHITE COFFEE CUPS Ea. 7¢
3-PIECE PLASTIC MIXING BOWL SET - ONLY - 73¢	CURTAIN RODS Extends 27 To 48 inches, Complete With Brackets 17¢ Ea.	BEAUTIFUL PLASTIC FLOWERS Nice Assortment 6¢ Ea.	PLASTIC WINDOW SHADES Compare: 35" x 4" White Only \$1.11	BRIDGE MIX CHOC. PEANUTS - Your Choice - lb. 44¢	DELSEY TOILET TISSUE PACK OF 2 24¢
Blue Willow DINNERWARE ROCK-BOTTOM PRICE	20 PIECE \$3.22	PLASTIC UTILITY TUB For Those Laundry Chores 73¢	1-BURNER ELECTRIC HOT PLATE - BONUS BUY - \$1.66	FIRE KING CASSEROLE OR UTILITY DISH Ea. 66¢	RAY-O-VAC BATTERIES Reg. Size Flashlight 2 FOR 25¢ Ea. 13¢
CERAMIC CHINA SALAD BOWL 8" Size - 27¢ 5 for \$1.00	PAINT BY NUMBER SET Includes Two 8" x 10" Pictures 66¢	STEAM - DRY ELECTRIC IRON Heat Setting Dial For All Fabrics Fully-Guaranteed \$6.99	101 6 1/2" SIZE ENVELOPES Terrific Value 27¢	IRONING PAD & COVER SET TUFFLEX PAD SILICONE COVER 47¢	LUSTRE CREME HAIR SPRAY - Another Scoop - 77¢
GALVANIZED PAIL 54¢ Ea.	PLASTIC WINDOW DRAPES Full Size With Valance 74¢	<h1>PIERCE'S 5c & 10c STORE</h1> <p>LOCATED IN THE NEW SHOPPING CENTER IN HEART OF MOREHEAD MAIN STREET SECOND STREET ENTRANCE MOREHEAD</p>			

Larry Wilson Sets Record With 299 Game At Morehead Lanes



PERFECT FORM—This is the form Larry Wilson, a student at Morehead State College, exhibited while rolling his 299 game in a practice game at the Morehead Bowling Lanes for Big "C" TV Bowling at Huntington, W. Va. Wilson missed scoring a perfect game of 300 on the last roll when he left the five pin standing.

Larry Wilson of Morehead State College failed to win the TV bowling championship at Huntington Sunday.

But, Wilson earned a mark that might stand for a long time in preparing for the title games. He rolled a 299 game at the Morehead Lanes.

Charlie Krell, Bowling Editor of the Ashland Daily Independent, had this to say about the 299 game of the MSC student —

"An amusing tale hangs around Larry Wilson. This past Friday at Morehead Lanes, so Manager Clint Fleming tells us, Larry set prodders back on their heels. Clint told Larry that since he was going to roll in the Big 3 match, he might as well have a couple of free games on the house."

"But, Clint told him, if he didn't roll 200, Larry would not only have to pay for the games but would have to pay double."

"Said Larry: 'You know, I never get more than 160 my first game.'"

"But Larry went to work. One strike, two strikes, three strikes — but Clint and the other boys around were 'cheering' from the sidelines. It all became quiet, however, when Larry kept right on going, running his string to 11 consecutive strikes. Then it happened, the confounded 5-pin, so often a bugbear to bowlers, remained standing on Larry's 12th ball."



MANAGER, MOREHEAD LANES—Morehead Bowling Association Secretary Harold Bellamy extends the city's welcome to Clint Fleming, right, who has recently come to Morehead to manage the Morehead Bowling Lanes. Fleming is a native of Ashland.

IN BLACK AND WHITE—Here the story in black and white of Wilson's near-perfect game. The score sheet shows strikes all the way across the top with the exception of nine pins on the last roll.

30 Farmers —

(Continued from page one)
mated in 1954 at \$13,900,000. The dam would be 100 feet high and 320 feet long.

Overwhelming opposition to its construction was voiced at a public hearing in Morehead in 1956, picketing farmers said.

But those who were for it then went underground to get it built, one of the demonstrators remarked. "We want more public hearings held before they try to build this thing."

Troy Alfrey, Menfee County, another picketer, said the dam would do away with 200 cemeteries and 23 churches and flood out 25,600 families. Alfrey owns a 300-acre farm.

"I know this dam won't benefit the counties as much as the farmhand will," said another picketer, "but it will take away from Route 4, owner of a 290-acre farm. Other demonstrators "said the reservoir would cover valuable oil, gas, and timber lands that have been producing for years."

The farmers also disputed statements by proponents of the dam that it would open up Northeastern Kentucky to recreational and industrial development.

Perkins Bill —

(Continued from page one)
The House Rules Committee, which must schedule all legislation for action by the full House membership, when the 87th Congress adjourns.

The Perkins' bill would establish the Youth Conservation Corps with an enrollment level of 15,000 young people the first year and 60,000 for each of the succeeding four years in addition. Title II of the bill would create public service employment for young people in state and local government and private public type nonprofit enterprises for about 50,000 young people a year.

One-third of the Corps enrollment strength could be reserved for use by states or state parks and conservation projects and the remainder of the Corps would be used by the Department of the Interior and the U.S. Department of Agriculture on federal forests and public lands to perform deferred recreational conservation and maintenance and construction work. In addition to compensation members would receive clothing, shelter, meals, medical care and supplementary education in a camplike atmosphere.

We might be able to leave the world alone, as some have suggested, if they could persuade the world to leave us alone.



IT'S FREE—A loom is one of the demonstration exhibits in the Kentucky Guild Train scheduled to visit Morehead Tuesday, Wednesday and Thursday of next week. Viewing the loom at the Hazard Dedication of the train are, from left, Miss Susan Black, assistant to the director of the State Division of Arts and Crafts; Mrs. Beulah Corbett, president of the Hazard P.T.A.; and Mrs. Lester Pross, Berea, wife of the president of the Kentucky Guild of Artists and Craftsmen. The Morehead Women's Club and Rowan County Woman's Club are sponsoring the visit of the train to Morehead. Admission is free.

TB Commission Says Increase In Clinics

The State Tuberculosis Hospital Commission's annual report for fiscal year 1961-62 points to a rapidly-growing outpatient clinic program as the Commission's "most significant recent accomplishment."

The report notes that 21 new clinics have been established, bringing the total number in the state to 52.

"But the number of outpatient clinics is increasing so steadily that our annual report is now actually out-dated," said Thomas M. Layton, executive director of the Commission.

He explained that five new clinics have been established since data were compiled for the report. In addition, he said five other clinics are tentatively scheduled to be opened in the near future and eight more are in the planning stage.

Clinics are held in county health departments to serve areas which are not near any of the six district tuberculosis hospitals. Persons suspected of having tuberculosis are referred to the clinics by private physicians and by county health departments. Following examinations of persons who have been discharged from hospitals are also made, and medical aid is given to indigent persons who are unable to pay for their care.

The report also points out that increased state appropriations made it possible for the Commission to increase from 18 to 25 the number of full-time physicians in the state-tuberculosis hospitals.

Statistics included in the report show that average cost per day per patient has been reduced 58 cents — from \$12.44 in 1960-61 to \$11.86 in 1961-62.

Redistricting —

(Continued from page one)
Bath, 9,114; Boyd, 22,163; Bracken, 7,423; Breathitt, 15,490; Carter, 20,817; Elliott, 6,330; Fleming, 10,890; Floyd, 41,842; Greenup, 22,228; Johnson, 19,748; Lawrence, 12,134; Lee, 7,420; Lewis, 13,115; Magoffin, 11,156; Martin, 10,310; Mason, 18,654; Montgomery, 15,461; Morgan, 11,086; Pike, 6,354; Robertson, 2,443; Rowan, 12,306; Wolfe, 6,534.

In 1961-62. Total expenditures in 1961-62 were \$3,541,960.20 as compared to \$3,216,581.10 in 1960-61.

Number of patients admitted and number of patients discharged from state tuberculosis hospitals reached all-time highs for the fourth successive year in 1961-62. There were 1,980 admissions and 1,986 discharges — compared to 1,895 admissions and 1,756 discharges for the previous fiscal year.

There was also a 15.6 per cent increase in the number of patient days during 1961-62, 298,760 as compared to 258,323 the year before. This too was an all-time high.

The report also touched on some of the future objectives of the Commission. Among these are: improved program of dental care; expansion of the program for treatment of pulmonary fungus diseases; and wider distribution of anti-tuberculosis drugs to medically indigent persons.

Task Force Will Discuss Water Problems

Technical assistance task force teams from the Kentucky Area Development Committee will cover Kentucky the last half of February with meetings on water system and sewage plant development.

Dr. G. W. Schneider, chairman of the Kentucky Development Committee, said 24 such meetings are scheduled in various communities.

The schedule for Eastern Kentucky is: today (Thursday) D&W Cafe, Barboursville, 1 p.m.; Tuesday, Feb. 26, Grayson H.R.C. building, Grayson, 10 a.m.; and Paintsville County Club, 3 p.m. Wednesday, Feb. 27, community room, Mt. Sterling courthouse, 1 p.m.; and Thursday, Feb. 28, Glyndon Hotel, Richmond, 6 p.m.

The awards, citations, plaques and degrees bestowed upon individuals annually represent recognition of favors received.

Advertising has been preparing for businessmen for many years and nothing has happened recently to change this business principle.

THE CHURCH OF CHRIST
Meets at
225 Second Street
Morehead, Kentucky

Sunday School 10:00 A.M.
Sunday Worship 11:00 A.M.
Sunday Evenings 6:30 P.M.
Wednesday Evenings 7:00 P.M.

DON FLATT, Minister
Hear "The Voice of Truth" over WMOR each Wed. — 7:15 a.m.

LIL' ABNER'S LIL' ABNER'S LIL' ABNER'S LIL' ABNER'S LIL' ABNER'S

LIL' ABNER'S
WE'RE GOING FISHING, MULE, RIGHT AT LIL' ABNER'S

The fish there has that 'just caught' flavor, exactly like fish you've caught yourself and cooked over your own campfire. That's why everyone says, "For the best eating in town — LIL' Abner, of course!"

LIL' ABNER'S 507 E. Main St., MOREHEAD, KY.
Kentucky's Most Interesting Family Restaurant

LIL' ABNER'S LIL' ABNER'S LIL' ABNER'S LIL' ABNER'S LIL' ABNER'S

Morehead Roller Rink Sponsors Valentine Party



VALENTINE QUEEN—Pretty Judy Fannin, 12, daughter of Mr. and Mrs. Aulie Fannin, Morehead, was chosen first Valentine Queen at the Morehead Roller Rink last Thursday evening. Henry C. Haggard, right, presented the trophy to Judy while H. M. Meadows, president of Morehead Roller Rink and director of the Peoples Bank, looks on. Meadows said the party will probably become an annual event.

COMING! **COMING!** **COMING!**
Where?
MOREHEAD LANES
What?
MOONLITE BOWLING
Saturdays 11 P.M. To 2 A.M.
Sundays 10 P.M. To 1 A.M.

Sensational New Lighting
Exciting New Game

PLAN A PARTY — COME OUT AND JOIN IN THE FUN

MOREHEAD LANES

"Your Country Club of Bowling"

TALK ABOUT PRICE!
6-PASSENGER
'63 FALCON from FORD

PRICE INCLUDES:
• fresh air heater • turn signals
• oil filter • self-adjusting brakes
• electric windshield wipers
• federal tax and preparation

AS LOW AS \$4340* PER MONTH

*Based on manufacturer's suggested retail price for Falcon 2-Door Sedan after normal down payment

ROWAN MOTOR SALES
SALES AND SERVICE Morehead, Kentucky
Phone State 4-4880

ONLY YOUR FORD DEALER HAS USED CARS AND TRUCKS

MOREHEAD NEWS

Morehead, Kentucky, Thursday Morning, February 21, 1963

1,057 Men And Women In Rowan County Don't Read, Education Department Claims

It is a shocking fact that 1,057 men and women in Rowan County cannot read a newspaper or fill out a simple employment application. Their eyesight is good and they are mentally capable — yet they cannot read or write as well as a child in the fifth grade, according to the State Department of Education. The statement from Frankfort continued — "They are our county's functional illiterates, or non-readers, whichever term you prefer. "Until recently, America's 11 million illiterates have been able to find jobs with little difficulty. Unskilled labor was in demand. That situation is changing rapidly as technological advances are being made. These changes threaten frightening implications for the under-educated men and women in our society. "Today's employer frequently demands a high school diploma as a basic requirement for the job to be filled. He is reluctant to

hire someone who may be a hazard to himself and to others because he cannot read safety directions or cannot read job instructions sheets, or information about company rules and benefits. Applicants who cannot read these requirements are quickly rejected. The situation of these rejected individuals is often tragic. "They have the strength, stamina and desire to do the job, but their illiteracy closes the doors of employment to them. "Now there is something we can all do to help these unfortunate people. "Thanks to station WSAZ-TV, channel 3, the local school system, and many co-operating agencies, a new avenue of hope will soon be open to these under-educated men and women. "Beginning March 18, a unique new television series, "Operation Alphabet," will enable them to learn to read and write, and this will all be done in the privacy of their homes. "The success or failure of this all-out attack on illiteracy depends entirely upon residents of this county who can help. Remember, illiterates cannot read this newspaper or any other printed materials telling about "Operation Alphabet." "If you have friends or neighbors who can benefit from this program, tell them about "Operation Alphabet." Encourage them to watch the program regularly. You will be helping your friends and your community a service that will have far-reaching and immeasurable benefits."

Visits Curtailed At 4 Hospitals

Northern Kentucky hospitals have asked families of patients to curtail visits voluntarily because of the current influenza outbreak. The appeal came from administrators at St. Elizabeth and Booth Hospitals in Covington, St. Luke Hospital in Ft. Thomas, and Speers Hospital in Dayton. They said well-meaning visitors might nonetheless be carriers of the infection and pass it on to patients or hospital staff. All four hospitals noted absenteeism increased by hospital workers because of influenza ailments in the first two weeks of February. "These are the people, the governor continued, who are not able to go to the store or the bank, who don't have the physical strength to do their own cooking, for instance, and yet who may have families or neighbors who can do these necessary things for them. "The governor expressed the hope that the state would be able to help these people who have this particular kind of problem. "The answer, he believes, lies where in the area of public housing. "There may be, for instance, some kind of local housing that can be used with the federal government," he added. "Named to the task force by Governor Letcher are Health and Welfare Administrator Felix Johnson; Budget Director Robert Corbett; Commissioner of Economic Security E. A. Rie V. C. ; and Louisville Attorney Thomas Ray who has been in programs designed to aid senior citizens. "The center is a non-profit center which formerly housed the Louisville-Jefferson County tuberculosis sanitarium. "The governor pointed out that the number of Kentuckians 65 years of age and older is constantly growing. In 1940, he said, the total was 189,281; by 1950 it had increased to 255,243 and 1960 census figures showed 292,223. He said that the total today is estimated at 310,000. Combs said that "one of my major duties as governor has been to try to improve the situation of Kentucky's needy senior citizens." He listed increases in old age assistance payments; the launch of the program providing limited medical care for the elderly; establishment by the state of a fund to encourage the building and improvement of nursing and personal care homes for the elderly; and state help assisting the Kentucky Geriatrics Center as some of the ways the state is aiding elderly Kentuckians during the past three years.

Records Are Broken At Child Hospital

For the 71st year in a row Children's Hospital in Louisville, again in 1962, has broken all previous records. The hospital announced its patient statistics this week. They showed that Rowan County ranked total of 40 days. The total patient days from Rowan County in 1962 compared to the 1961 figures showed Children's Hospital cared for 30,116 patients in 1962 compared with 28,823 in 1961. The breakdown of this total showed 19,221 admitted patients from counties in Kentucky, 10,895 from Jefferson County, 200 from other states and 1000 patient days in the Louisville hospital. Children's again gave approximately \$200,000 in free care to children of indigent families that could not afford to pay their own way. Another increase was recorded by the chromatography lab which ran a total of 90,345 laboratory tests.

Ax Used To Build Lincoln Cabin Displayed

The broadaxe which may have been used to build the cabin in which Abraham Lincoln was born is now at Lincoln Homestead State Park, near Springfield. The listed increases in old age assistance payments; the launch of the program providing limited medical care for the elderly; establishment by the state of a fund to encourage the building and improvement of nursing and personal care homes for the elderly; and state help assisting the Kentucky Geriatrics Center as some of the ways the state is aiding elderly Kentuckians during the past three years. "Recently they offered to loan it to the Kentucky Department of Parks for exhibition and now it is back in Kentucky in a replica of the cabin where Thomas Lincoln was reared. "Everything we ever wanted in a Farm Loan... we have in our LAND BANK LOAN Association. Callertsburg, Ky. Phone 739-2531. Mrs. Irene Cline Salyersville, Ky. Phone Firsides 9-8733. (Residence Sherwood 37255, West Liberty, Ky.).

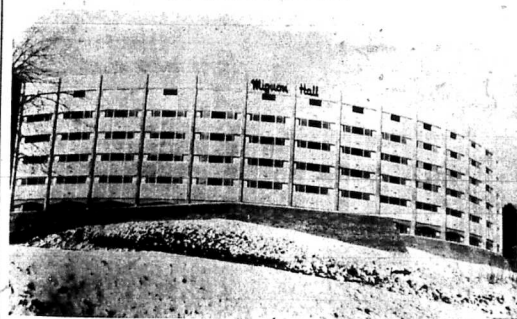
Problems Of Elderly Are Under Study

Gov. Bert Combs has named a four-man task force to see if some practical answers can be found for the problems of "elderly, needy people who have been overlooked through the years by well-meaning programs." The governor defined this group as those people "who don't need to be in a hospital or even in a nursing home, but who, because of the natural infirmities of age, are not able to take care of themselves. "These are the people, the governor continued, who are not able to go to the store or the bank, who don't have the physical strength to do their own cooking, for instance, and yet who may have families or neighbors who can do these necessary things for them. "The governor expressed the hope that the state would be able to help these people who have this particular kind of problem. "The answer, he believes, lies where in the area of public housing. "There may be, for instance, some kind of local housing that can be used with the federal government," he added. "Named to the task force by Governor Letcher are Health and Welfare Administrator Felix Johnson; Budget Director Robert Corbett; Commissioner of Economic Security E. A. Rie V. C. ; and Louisville Attorney Thomas Ray who has been in programs designed to aid senior citizens. "The center is a non-profit center which formerly housed the Louisville-Jefferson County tuberculosis sanitarium. "The governor pointed out that the number of Kentuckians 65 years of age and older is constantly growing. In 1940, he said, the total was 189,281; by 1950 it had increased to 255,243 and 1960 census figures showed 292,223. He said that the total today is estimated at 310,000. Combs said that "one of my major duties as governor has been to try to improve the situation of Kentucky's needy senior citizens." He listed increases in old age assistance payments; the launch of the program providing limited medical care for the elderly; establishment by the state of a fund to encourage the building and improvement of nursing and personal care homes for the elderly; and state help assisting the Kentucky Geriatrics Center as some of the ways the state is aiding elderly Kentuckians during the past three years.

Moore, Smedley Are Training At Great Lakes

Frederick L. Moore, grandson of Mr. and Mrs. John M. Butler of Route 3, Morehead, and Donald G. Smedley, son of Mrs. Letha E. Plunk, Morehead, are undergoing nine weeks of basic recruit training at the Naval Training Center at Great Lakes, Mich. The indoctrination to Navy life consists of physical fitness drills, military drills, seamanship, best military law, customs and etiquette of the naval service, swimming and survival, and first aid. During the training, recruits receive tests and interviews which determine future training and assignments in the Navy. "ON DRUG IMPORTS Strict regulation of the importation of dangerous drugs and penalties for violators were proposed by Senator Dodd (D., Conn.) chairman of the Senate Juvenile Delinquency subcommittee. Dodd said a major problem arises from drugs manufactured in this country, legally shipped into Mexico, purchased there and smuggled back into the United States.

To House 300 Girls



OPENING FEBRUARY 24—Mignon Hall, the ultramodern girls' residence hall, will be opening February 24. The dormitory was named after Mrs. Adron Doran by the Board of Regents after they received a petition from the Student Council and the Alumni Association requesting that the new building be named for her.

NAMED IN HONOR OF MRS. DORAN

Opening Of Mignon Hall Is Scheduled For February 24

By Roger Dixon
Morehead's newest residence hall, Mignon Hall, will be opened Monday, Feb. 24, with an open house from 1:30 to 4:00, honoring Mrs. Adron Doran. The \$1,125,000 residence hall was named for the active wife of President Adron Doran. Mignon Hall is a six-story semi-circular structure with automatic elevator service. There will be 75 suites, consisting of a country living room, ceramic-tile bathroom and a bedroom for four girls. Other features of the building include a large entrance lobby, sun deck on the roof, a snack room, a student laundry with washers and dryers, and a one-bed-

room apartment for the house mother. Housing 300 girls, the residence hall will increase the present boarding space for women from 270 to 405. Many Morehead residents, students and visitors alike have expressed their feelings toward the residence hall by calling it, "Mignon Hall." The building features facilities for women, including a recreation center. "It is a great honor," commented Mrs. Doran, to have the residence hall bear my name and I appreciate the Board's sentiment. Mrs. Doran is an active church and civic leader. A member of the Church of Christ, she has assisted in establishing a congregation in Morehead and financing the construction of a new church building. As chairman of the Crippled Children's Board of Regents in 1962, Rowan County led the state in percentage of increase. She has

served as a member of the Crippled Children's Board in Kentucky for a number of years. Mrs. Doran has been active in women's clubs, holding varied state positions. During the past year, she received the highest honor in the Kentucky Federation of Women's Clubs when she was named as the president of the club. An accomplished musician, Mrs. Doran has played the organ for a number of years at the Kentucky State High School basketball tournament, for N.C.A.A. fans in 1958 and plays the organ for the home games of the Morehead State College Eagles. "A broad educational background, a deep religious faith and an understanding of people com-

Could Be Cause For A Divorce

It's bad enough when your husband brings his motorcycle into the apartment, Mrs. Veronica Skwierczynski told police in Chicago this week. "But when he brings it in with the engine running..." Mrs. Skwierczynski called the cops who locked up her husband, Stanley, 23, without his motorcycle. The charge was disorderly conduct. Mrs. Skwierczynski told the judge that she and the couple's three children couldn't sleep because of the motorcycle noise. They live in a three-room apartment.

Ministers Face Many Pastoral Whims, Problems

Pastoral pressures in the theme of an institute for ministers to be held at Eastern State Hospital, Lexington, Feb. 22 to 27. The Institute, open to all Kentuckians, will deal with some of the more serious problems of the minister, with emphasis on the conduct of his work. The minister feels called to do and what his church or community may expect him to do. It is sponsored by the Kentucky Council of Churches and Eastern State Hospital.

NON-DRINKERS

Pay LESS for the BEST

Auto Insurance

Phone State 4-5866

Box 75

W. C. Hampton

MOREHEAD, KY.

Representing

Preferred Risk Mutual Ins. Co.

DES MOINES, IOWA

TIME STOOD STILL

Don't be a Rip Van Winkle. Find WATCH REPAIR and JEWELERS fast in the YELLOW PAGES, where YOUR FINGERS DO THE WALKING.

Dog Almost Wins Title Of 'King'

A dog almost won the title "king of the winter carnival" at the University of Colorado. Irving, a year-old mixture of German shepherd and Alaskan husky, came in second behind Ken Kar Tan, a senior from Thailand. Irving, sponsored by the Lambda Chi Alpha fraternity, will best out at other male contestants in the campus balloting.

WALKING SHOES

By NATURALIZER

The thing about women's shoe styles — they don't stand still. And the biggest change these days is comfort. Now, comfort CAN BE fashionable. Take the new Naturalizers that MARTIN'S has for example. They not only feel wonderful, they look great. Whether you favor dress up pumps or more casual daytime styles, you'll be slipping into the best feeling shoes you've ever owned. You can see, fit is important in every Naturalizer shoe, so you can be sure there'll be no uncomfortable gapping or slipping when you walk. The secret is Naturalizer's combination test. It keeps the shoe snug on your foot yet allows plenty of room. What's more, every step is cushioned by an airform insole... and each shoe is so soft and flexible, you can bend it almost double with your fingers. You'd never believe fashion could be comfortable, or so sensibly priced. Naturalizer's new spring styles start as little as \$11.99. See them today at MARTIN'S.

MARTIN'S DEPT. STORE

MAINT STREET — MOREHEAD

Priced From \$11.99

When we order food to take out we want the most very best! So, we call State 4-1134 for the delicious Carry-Out food in Morehead. It's piping hot and ready to go when we pick it up at...

LIZ ABNER'S

507 E. Main St., MOREHEAD, KY.

Kentucky's Most Interesting Family Restaurant

LIZ ABNER'S LIZ ABNER'S LIZ ABNER'S LIZ ABNER'S LIZ ABNER'S

NOW SEE WHAT'S NEW AT YOUR CHEVROLET DEALER'S

Four kinds of sport—all super

Want to make spring come in a hurry? Just pick a new car with whatever you banker for in performance and sporty trimmings—like bucket seats, 4-speed shift, lots of horsepower—and start driving it now. Chevy's got a lot of sport in four entirely different kinds of cars.

First, the Jet—another Impala Super Sport with your choice of 7 different engines that range up to 125 hp and that include the popular Turbo-Fire 409* with 340 hp for the ultimate in smooth, responsive driving in modern traffic. Optional equipment, including Comfortor steering wheel* that adjusts to your convenience, makes it as super a sport as you'd like.

Then, the Chevy II Nova, also available in an SS version, Special Instrument cluster, Front bucket seats, All-Steel Distinctive SS Identification, Fourteen wheels and tires* with full wheel disks, Three-speed shift or Powerglide* with floor-mounted shift console.

And for a real wild one, see the stunning Corvair Sting Ray, winner of the "Car Life" 1962 Award for Engineering Excellence.

All told, four beautiful convertibles, four handsome coupes. You'll get a four-bumper kick just looking them over—and a whole lot more fun out of driving one!

**Optional at extra cost.*

See four entirely different kinds of cars at your Chevrolet dealer's Showroom

MIDLAND TRAIL GARAGE

East Main Street Morehead, Kentucky State 4-5136



MSC SENIORS HEAR ABOUT PROGRAMS—Joe Hinkle and Jack Rader, both Morehead State College seniors hear about the Army's two new programs from U.S. Army representatives who visited the campus recently. Above are (l. to r.): M. Sgt. Bill Goolsby, Morehead Army recruiter, Hinkle, M. Sgt. Ovide Lusher, U.S. Army recruiting supervisor at Ashland, and Rader.

TALK TO PROSPECTIVE OFFICERS

Army Representatives Visit M'head To Discuss Programs

Many young men in the Morehead region are likely to be quite interested in two new U.S. Army programs which were just put into effect last month.

One is an Officer Candidate School option and the second a program of direct appointment for college graduates.

The option for OCS is unique for the Army in that it marks the first time a young man may be assigned to OCS prior to induction under the "choice, not chance" program.

For this program young men may enter either infantry or artillery and upon completion receives a commission in the Army Reserve.

Specific prerequisites for the officer training are:

- Have a baccalaureate degree or higher from an accredited non-Army ROTC college or university recognized by the Department of Health, Education, and Welfare, except: a. Graduates of ROTC colleges who, for valid reason, could not participate in the ROTC program may also apply, and b. Students in their senior year of college may submit an application 135 days before their graduation date.
- Be a United States citizen of at least 18½ years of age and not older than 27 years.
- Successfully complete basic combat training prior to entry in OCS.
- Enlist in the Army for two years.

The program of direct appointment is in the Regular Officer Corps and is designed for men desiring a career in the Army. Under the program 25 graduates of accredited colleges and universities will be selected annually. It is highly competitive to insure that only men of the finest caliber are selected.

Men may become candidates who:

- Are between the ages 21 and 26.
- Expect to graduate this year from an accredited college.
- Are students at a school which does not participate in the Army Reserve Officers' Training Corps Program (such as Morehead), or
- Are scholastically outstanding in a critical specialty and were unable to participate in the school's ROTC program for valid reasons.

Applicants may indicate a preference of these branches in the program: Armor, Artillery, Chemical Corps, Corps of Engineers, Finance Corps, Infantry, Medical Service Corps, Military Police Corps, Ordnance Corps, Quartermaster Corps, Signal Corps and Transportation Corps.

In addition to these programs young men have the option of serving their six-year military obligation in a number of ways. Among them are: Six-months active duty and 5½ years reserve duty; 2 years active duty; 2 years ready reserve and 2 years stand-by reserve; 3 years active duty and 3 years stand-by reserve; or 4 years active duty and 2 years stand-by reserve.

Additional information is available by contacting M. Sgt. Bill Goolsby, Morehead Army Recruiter or M. Sgt. Ovide Lusher, U.S. Army Recruiting Supervisor at Ashland.

Urge Rowan Farmers To Test Soil

By Billy K. Benson

It is very important to each farmer in Rowan County to select the most suitable soil type on his farm to grow his tobacco.

Soil characteristics should be considered by farmers in selecting the land on which to grow their tobacco. The soil type should be deep, high in organic matter, with little erosion hazard and should be profitable.

Many farmers in Rowan County would find it to be a very profitable practice to tile drain their tobacco land. In other cases diversion ditches located between tobacco patches and higher upland intercept surface water and seepage flow. On upland where erosion is a hazard, terraces might be profitable.

The Soil Conservation District upon request, will send Paul Love, soil scientist, out to any farm to prepare a land capability map, upon which is shown the type of soils, slopes and amount of erosion.

The work unit conservationist, Billy K. Benson, will then work with the farmer in selecting the most suitable soil type for tobacco and other crops. He will also advise the farmer on needed conservation practices, and if desired, will help him develop a basic conservation farm plan.

Registration Of Boats In State Mandatory

The first 1963-64 Kentucky boat registration decals have been mailed from the Kentucky Department of Public Safety's Division of Boating.

Approximately 300 boat owners registered their craft during January following a change in registration regulations permitting registration renewal or new registration any time after Jan. 1.

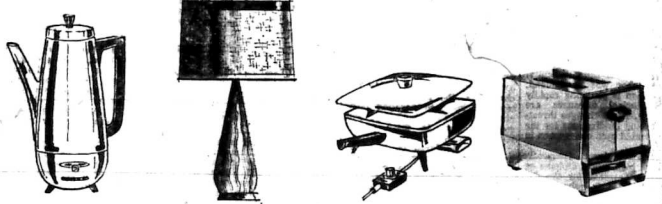
Previously registrations could not be renewed until April 1. All current registrations will be valid until May 1, 1964.

Boating Division Director E. C. "Bud" Catman said the regulation was changed to permit the state's boat owners an opportunity to renew their registrations before the boating season opens. A total of 49,000 boats were registered in the state last year, he said.

Good Eating ^{with} Great Savings!



— Plus —
Bonus Bucks Good For Free Premiums On These And Many Other Items!



Cube Steaks EACH 10c

Bacon Squares LB. 10c

AMERICAN BEAUTY Can
Can Good Sale 10c

10-OZ. PKG. FROZEN
French Fries 10c

1-LB. BUTTERNUT
BREAD LIMIT OF 3 LOAVES WITH \$2.00 ORDER **LOAF 10c**

1-LB.
CARROTS EACH **10c**

Bananas LB. **10c**

SAVEWAY **SUPER MARKET**

WEST MAIN STREET MOREHEAD, KENTUCKY

WE RESERVE THE RIGHT TO LIMIT QUANTITY DUE TO SUPPLY PROBLEMS

AT YOUR FORD DEALER'S FRIDAY! The Liveliest of the Lively Ones!

Meet Ford's all-new Command Performance cars—fresh from their world premiere in Monaco! At center is the hot new Falcon Sprint V-8 that won first in its class at the famed Monte Carlo Rallye. Bucket seats, sports-type steering wheel, 164-hp V-8 and tachometer are standard. More news! V-8 engines now available with any Falcon! Top: the new Fairlane 500 Sports Coupe that took Alpine grades like a native. There's a choice of two V-8's and a vinyl covering in black or white for its Thunderbird roof. Foreground: new Super Torque Ford Sports Hardtop with V-8 zoom up to 425 hp and sleek new roof-line. This beautiful new hardtop looks like a convertible!

*Except Falcon Station Wagon and Club Wagon



ROWAN MOTOR SALES

Phone STate 4-4880

SALES AND SERVICE

Morehead, Kentucky

**Smart hostesses
don't miss this . . .**

Exclusive

Wild Clover



DINNERWARE

To acquaint you with this outstanding
dinnerware buy . . .
offering you this

**4
piece** *Starter
set*



FREE

With Purchase
Of \$5.00 Order
Or More

The Week Of
FEB. 21st to 28th

Finish Your Set ABSOLUTELY FREE With SAVEWAY BONUS BUCKS —
One Saveway Bonus Buck Given With Each \$1.00 Purchase Here At SAVEWAY

Extra Place Setting Only 149 Bonus Bucks!

You May Use Bonus Bucks You Have Now — Or The Ones You Get On Future Purchases! Beautiful Completer Pieces
Are Available! Shop At SAVEWAY And Get A Complete Set Of Dinnerware Down To A Cake Plate Set Absolutely
FREE!

See Specials
This Week

←
At SAVEWAY

RAY'S SAVEWAY SUPER MKT.

EAGLES STILL ON TOP

Stretch Duel Expected In Ohio Valley Conference Race

With seven victories in the last 14 O.V.C. encounters, Morehead's Eagles are perched on top of the Ohio Valley Conference battle and need but two more wins to clinch the championship.

After hitting the century mark for the second time this season in downing non-conference foe Jacksonville University 106-80, the Eagles downed Eastern State 75-54 and made history defeating Western 82-71 for their first triumph in the "Little Red Barn" since the league began. Then it was a big Tennessee Tech outfit that pulled a zone defense in the Fieldhouse to upset Coach Bobby Laughlin's Eagles 66-64.

However, the Eagles bounced right back and subdued Murray 90-86 two days later.

Loss Reversed All five starters hit in double figures as the Eagles got revenge for a controversial loss at Jacksonville two years ago. Hitting 50.7 per cent as a team, Morehead was led by sophomore sensation Harold Sergeant with 29 points. Following Sergeant in the lineup came Coach's son, Junior Ward, who tallied 21 markers.

Gibson and Hoover had 10 points each and Tom Ellis followed with 9 as Coach Laughlin cleared his benches. The game was a close one, with victory came out on top again 68-64.

The loss left the Eagles with three teams have lost only three games, meaning Morehead must be victorious in their final four O.V.C. encounters.

Lauphlin and crew started in fine fashion by downing the Murray thoroughbreds 85-80.

After being downed by as much as 13 in the opening minutes, Morehead bounced back, led again by Sergeant and his consistent jumper to pull within two points of the hopeful Hillsopps at halftime and pulled ahead slowly but surely to give the Eagles their 11th win in 13 starts this season.

A six game winning streak was snapped when the Eagles ventured home to seek revenge against the same Tennessee Tech club that had handed Morehead their only loss in the conference thus far. However, Tech pulled off a zone

defense which stymied the Eagles as Ellis and Sergeant were the only ones to hit with any consistency, each came out on top again 68-64.

The loss left the Eagles with three teams have lost only three games, meaning Morehead must be victorious in their final four O.V.C. encounters.

Lauphlin and crew started in fine fashion by downing the Murray thoroughbreds 85-80.

After being downed by as much as 13 in the opening minutes, Morehead bounced back, led again by Sergeant and his consistent jumper to pull within two points of the hopeful Hillsopps at halftime and pulled ahead slowly but surely to give the Eagles their 11th win in 13 starts this season.

A six game winning streak was snapped when the Eagles ventured home to seek revenge against the same Tennessee Tech club that had handed Morehead their only loss in the conference thus far. However, Tech pulled off a zone

Results, Schedule Of M'head Eagles

Table with columns: (W - Win, L - Loss), (OVC - Ohio Valley Conference), (T - Ties), (M - Missions), (S - Suspended), (F - Forfeited), (P - Postponed), (A - Away), (H - Home), (N - Neutral). Rows list games against Marshall, Middle Tenn, Eastern State, etc.

Standings In Ohio Valley Conference

Table with columns: Team, Games Won, Games Lost. Lists teams like Morehead, Tennessee Tech, Eastern State, etc.

Hopes High For Tourney Bid As Morehead Closes Season

The NCAA tourney looms large in the Eagle's future, and there are only two remaining conference games to post a positive gain before becoming a stop-gap in the Eagles' hopes.

These two decisive games will be played upon the opposer's courts, it will throw some strain on Coach Laughlin's squad. However, the Eagles have great stamina, and they have shown their powers of endurance in the hair-scraper shows they put on against Eastern State and Murray.

In the first of these crucial games, the Big Blue travels down to Chattanooga to meet the Buccaneers this Friday night.

East Tennessee's leading rebounder, M. Roberts, who has been pitted against the nation's No. 3 rebounder, the Eagle O.V.C. man, up, Pokley.

who has been pulling down a record setting 18.1 rebounds per game.

After rivalry will renew itself in the Eagle's next and last scheduled game, a game of major importance comes. MSC's national ranked offensive unit will be trying to cope the O.V.C. crown as they battle the Maroons at Richmond next Tuesday.

Once again, the overall 6 won-9 lost Maroons will be led by the high scoring Ron Pickett, a center with an average of 16 points per game. Along with his points, Pickett is a budding double and triple threat, averaging 8.7 rebounds per game.

Adding the Maroon's free throw shooting attempts will be the league's most accurate foul shooter, forward Jim Work, who has a fancy 88.8 percentage on total shots made from the foul line.

Although Eastern has a hot-shooting, foul shooting team, the Eagles have two of the O.V.C.'s top individual players. In the league's leading scorer, swift-shooting Harold Sergeant, and the league's leading rebounder, Norman Pokley.

Yearling Eagles Own A Three-Six Record

The Morehead Yearling Eagles now own a 5-6 won-lost record for 1962-63 season. Although not finishing the season like they started, this year's frosh show a lot of promise and look like they are going to come through for the Eagle varsity next year.

Revenue-minded Southeastern proved to be too big a match for the taller Eagles as they placed four men in double figures. Henry Akin and Houshield tied for game scoring as they each scored 24 points pushed through 27 cutters. Blair, McCoy and Snyder also hit double digits as the Yearling Eagles with 15, 14 and 19 respectively.

Blair led in the misc department pulling down 9 and Akin was next with 10.

The University of Cincinnati freshmen rolled over Morehead's U.S. in a game that was controlled by the Baby Maroons from the start. At halftime the score was 51-22; Benavets favor.

Akin again led Morehead's scoring with 16 points, followed by McCoy with 15 and Snyder with 10. Akin also had 12 rebounds to lead in that department. Other scoring for the Yearling Eagles: Gardner 8, Lapham 3 and Kormley 1.

Morehead hit a very poor 29 per cent from the field and 79 per cent from the gratts line.

In another close one the Yearling Eagles outlasted the Baby Maroons win 77-86. It was Morehead's second win over Eastern this year.

The Yearling Eagles hit 50.7 per cent from the field and 79.3 per cent from the free toss line.

In their first home encounter in over a month and last of the season, the Yearling Eagles dropped before a classy Xavier crew 82-63. Unable to maintain a lead, Morehead played raggedly and saw Xavier lead 43-30 halftime lead and go on to hand the frosh their sixth loss of the season.

McCoy's rebounding in scoring with 17 cutters, with Akin and Castle notching 12 each as the Yearling Eagles placed only three men in double figures. Other scoring for Morehead was as follows: Wojcik had 8 and Gormley and Lapham had 2 each. Gorman and Cooper were high for Xavier being 29 and 24 points respectively.

The frosh play Marshall their Feb. 28 game, March 2 to round out their season.

A REAL BEAUTY—Larsson Kohls, a junior from Alexandria, Queen of the Southeastern Conference, was selected as the Beaux Arts Artist of the Year by the organizations representing the College.



David Day, Stephen Boyd, Jimmy Durante and Martha Raye use the dazzling stars of "Billy Rose's Jumbo," Metro-Goldwyn-Mayer's spectacular musical with a circus background, in which all four sing, dance and appear in thrilling suspense acts, including equestrian feats and highwire performances. Based on the screen play by famous screen act, The Joe Pasternak Production was directed by Charles Walters.

Provide Good Food For School Lunches

Many Kentucky boys and girls are eating well-balanced meals at noon because of the National School Lunch Program.

About half of Kentucky's school children, high school age and below, have nutritious noonday meals at school because of this program. Kentucky is one of the nine states making up the Southeast Region, which is among the leading areas of the U.S. in the number of school children receiving lunches under the national program.

A new high of 15 million American children will eat nearly 2.5 billion well-balanced lunches this year under the program, according to plans of the U.S. Department of Agriculture. USDA's Agricultural Marketing Service carries out the national program with the cooperation of State Departments of Education. Public and nonpublic private schools of high school grade or lower may participate.

The basic purpose of the program, as stated in the legislation authorizing it, is to safeguard the health and well-being of the nation's children by encouraging them to eat more nutritious foods. At the same time, this program is one means of consuming the nation's agricultural abundance.

All schools taking part in the program on a non-profit basis and the meals must be available to all children without discrimination, regardless of their ability to pay. Payments by the children average about 69 per cent of the cost of the lunch, with federal, state and local sources making up the difference. Free meals are provided for those children who cannot pay.

Each school must serve a lunch containing, as a minimum, a high-protein food, generous servings of fruit or vegetables, bread, butter or fortified margarine, and a half-pint of milk. These lunches, with portions adjusted to the age and needs of the different children, provide one-third to one-half of the daily food requirements of a school child.

Under the regular National School Lunch Program, USDA funds, provided on a matching-fund principle, are apportioned among the states and used to reimburse the schools in part for the costs of locally-purchased foods. Funds apportioned for continuing and expanding the program this fiscal year total \$108.6 million — \$10 million more than last year.

USDA's Agricultural Research Service also buys and distributes foods which will be used in the nutritional requirements of the program. Nearly \$56 million have been used to buy more than 242 million pounds of food so far this school year. In addition, funds from USDA price-support and sur-

plus-removal activities are made available from time to time, which also widen marketing outlets for these agricultural products.

In 1962, for example, USDA bought 60 million pounds of fresh-frozen, cut-up young chickens for use in the National School Lunch Program during the current school year. Kentucky was allocated 1,680,000 pounds of this total. This is one example of how the program plays a dual role. USDA funds out the purchase of the chickens plus a good protein food on the lunch menus at a very reasonable cost. At the same time, it helps broaden the long-range market for poultry. Among other foods sent to Kentucky by USDA this school year were ground beef, canned sweet potatoes, canned tomatoes, and fresh cranberries.

12 Break Students On Honor Roll Honor citizen representatives of the third six week period at Breckinridge Training School have been chosen.

They are: Marsha Ferguson, Jerry Sparkman, Mary Cassidy, John Payne, Gene Irwin, and James Sneedgar.

Others were: Antoinette Allen, Michael Gilliam, Gary Bishop, Carolyn Coffey, Marquetta Boggs, and Carolyn Foster.

Some one might be able to tell us which is the biggest public nuisance: The people who take themselves too seriously or those who take themselves too lightly.

Morehead Wins Again In O.V.C. Sergeant, Pokley Pace Eagles In Crucial O.V.C. Victory

By DAVID VANCE Middle Tennessee became victim number 8 Saturday night at Murfreesboro as Morehead's 10th-figuring Eagles worked closer to the Ohio Valley Conference crown with their 79-67 victory over the Blue Raiders.

Thus, Morehead has almost clinched at least a tie for the league title and a victory over East Tennessee next Friday would seal it up for the Eagles.

Coach Bobby Laughlin's crew now stand 8-2 in conference play. This means if Morehead hands the Blues their fourth defeat, with just one more game on the Eagles' schedule, the crown would go to Morehead for the second time in three years.

Harold Sergeant and Norm Pokley paced the Morehead attack with 22 points each. Sergeant, the O.V.C.'s leading scorer garnered 14 of his total in the Eagles hot second-half performance.

Pokley, maintained the number two position in the nation re-bouncers by hauling down 19 misc minutes against the Raiders.

Bob Hoover was the only other Eagle in double figures as the 6'4" forward tallied 14 markers.

The Eagles held command throughout the contest and were never headed after Pokley's jumper broke a 44 tie in the opening minutes.

With Raiders did manage to keep within striking distance in the first half.

The Eagles longest lead in the first stanza came with 8:28 on the clock as they pulled to a 2-15 advantage. However, the hard-fighting Tennessee narrowed the margin and were down by only two, 31-29 at halftime.

Second Half Rally The second half was different story. Making out strong and never letting up, Morehead strengthened their lead and held commanding 21 point advantage with 7:45 to go in the game.

With victory within grasp the Eagles closed the rest of the way, allowing the Raiders to narrow the gap to the final 12 point difference.

The Eagles in racking up their 13th win of the season, against 3 set-backs, scored two more field goals than the Raiders but whipped the Blue Raiders at the end of the game, slinking 23-25 shots while Middle Tennessee managed 19-13 gratis turnovers.

Eagles Hit 41% The Eagles hit 41.2 per cent attempts for 41% while the Raiders attempted 73 and made good on 27 for 37%. Morehead also led in rebounding 56-37.

Morehead players their remaining game on the road with Ohio State University their next target tomorrow night in their last long-

conference game of the season. They next encounter East Tennessee in what has shaped up to be the most crucial tilt of the year.

Morehead closes out the season against Eastern at Richmond the following Monday. That ends regular season play.

Morehead (77) G F R P T Hoover 6-14 23-7 1-14 Ellis 2-5 4-5 7-5 18 Pokley 7-16 19-19 2-22 Sergeant 9-18 44-7 2-22 Ward 5-11 10-11 1-11

Clear 0-1 0-0 1-1 0-0 Johnson 0-0 0-0 1-1 0-0 Doyle 0-2 0-0 1-1 0-0

Totals 29-70 21-55 16 39 M. Tenn. (67) G F R P T Nickell 2-10 12-5 4-5 Stewart 7-15 24-9 1-17 Jent 6-19 5-8 16 4 7 Martin 10-20 3-6 8 4 23 Winchell 2-8 1-2 1-5 Allen 0-1 0-0 0 0 0

Totals 27-73 13-37 17 67 Morehead 31 48-79 Middle Tennessee 29 36-69 Officials: George Cooley and John McPherson.

On Saturday, Dec. 2, Bill Smith, Jerry Woodard, John Salyers and Susan Clark, members of Morehead State College's Diving Eagles, visited Tarklin Cave in Elliott County, five miles south of Olive Hill.

The purpose of the expedition was to find caves for experienced divers of the club to use and search for cave organisms.

Smith and Woodard entered the cave and explored underwater caverns using scuba equipment while Clark and Salyers tended to the cave and were available in case of an emergency.

Some of the cave organisms found were crayfish, bats, cave fishes, and cave crickets. While exploring in one of the caves they found an underwater entrance which led to a much larger cave.

Advertisement for Blue Cross-Blue Shield. Text includes: 'ARE YOU AFRAID YOUR HOSPITAL-SURGICAL PROTECTION WILL BE CANCELLED?', 'BLUE CROSS-BLUE SHIELD HAVE NEVER CANCELLED MEMBERSHIP BECAUSE OF', 'HEALTH', 'NECESSARY USE', 'AGE', 'RETIREMENT', 'CHANGE OF JOBS', 'MOVING'. Includes a coupon for hospital protection and surgical protection.

Advertisement for Lolita. Text includes: 'CHAKERRA TRAIL LAST TIMES TONIGHT! From The Controversial Best Seller! How did they ever make a movie of LOLITA? FOR OVER 100 MILLION COPIES SOLD IN 100 COUNTRIES! JAMES MASON-SHELLEY WINTERS PETER SELLERS - SUE LYON

Advertisement for Reptilicus. Text includes: 'FRIDAY-SATURDAY INVINCIBLE... INDESTRUCTIBLE! What was this BEAST born fifty million years out of time? REPTILICUS COLOR Plus "You fight war with your weapons... I fight with mine!" JACK PALANCE WARRIORS FIVE

Advertisement for Metro-Goldwyn-Mayer. Text includes: 'STARTING SUNDAY METRO-GOLDWYN-MAYER PRESENTS A JOE PASTERNAK PRODUCTION DORIS DAY STEPHEN BOYD JIMMY DURANTE MARTHA RAYE

This Week In History

February 22 is George Washington's birthday. On February 2, 1879, W. Woodworth opened his first 5 and 10 store in Vidua, New York. Piate Indian uprising and preparations for the Corbett-Fitzsimmons fight at Carson City made news in Nevada, February 2, 1897. Chief Justice John Marshall rendered the first decision declaring U.S. Law unconstitutional, February 24, 1803. Arizona was organized as a territory, February 24, 1862. The famous Colt revolver was patented February 25, 1836. The Hudson River tunnel was opened, February 25, 1909. The Canal Zone was granted to the U.S. by treaty with Panama, February 26, 1904. The 15th Amendment was proposed, February 26, 1869. Itherville & Bienville reached the Mississippi, February 27, 1809. Henry Wadsworth Longfellow was born, February 27, 1807. The Republican Party was founded, February 28, 1854.

For 5 cents
LET UNCLE SAM
do your footwork!

You can pay your
bills from the
comfort of your
armchair if you pay
by check and check
on the friendly



The Citizens Bank

"Grow With Us"

OPEN A SAVINGS ACCOUNT TODAY

Checking Accounts • Saving Accounts • Loans

Member Federal Deposit Insurance Corp.

USE OUR NIGHT DEPOSITORY



Kentucky Derby Museum

Newly-opened under the famed twin spires of Churchill Downs in Louisville is the Kentucky Derby Museum which pays homage to the world's most celebrated sports event. The museum features pictures of each Derby winner with his jockey, trainer and owner; paintings depicting early Kentucky Derbies; trophies; and badges worn by the first Derby entries. Museum personnel provide an interesting commentary on the exhibits and, during the summer months, the famed track provides guided tours of its beautiful grounds. Except during racing meets, both grounds and museum are open free to the public every day from 9:30 a.m. to 4:30 p.m.

THE MSG FASHION SCENE

Spring Fashions Are Slowly Making Their Appearance

Spring is almost here, except for a wee bit of snow still tucked around the edge of the sidewalks. Throw off these woeen garments and put on those new spring fashions.

This year's leading fashion magazines say that this year the spring fashions are the greatest. Why should they make this wild and rash statement, let us see why.

The most noticeable new shape—the overblouse. It's a casual separate; see it just as often as a super-slick city look. It turns up in all sorts of lengths—but not all equally becoming for everyone. One length we find too long, too old, for most of us; the tunic, a few inches above the knee.

Suit jackets are also longer—to the hipbone, most often—with long, narrow sleeves. But shirt sleeves show up on lots besides shirts—even look pretty on suits. Skirts follow many lines, seldom the straight and narrow—An-lin, a round of pleats, or gathers in the front.

Important Shape

The other important shape: a fitting line, becoming more fitting for a more feminine spring look. Take coats—and if you thought they looked better than ever this winter, you'd see they look even better this spring.

Though they're tailored, don't think they're very feminine: gently shaped, never always in soft, spongy fabrics, mostly in pale colors. In fact, our fashions in color are mostly pale: pink, yellow, blue (pale and navy both), beige and white. The pastels are strong enough to stand by themselves, but don't always choose to. Instead, choose two or more for play or for big-city dressing.

Late-day looks are all shape, simply, but a little tricky to wear, need very few jewels, but very great hair and shoes. That's the news to-know about ready to wear, but there's more to know to be ready to wear it.

Hats Off

Hats off entirely—unless they're clearly off the face and in new, young shapes. They get their best adding polish to a daytime city look rarely go out after five.

Shoes also look softer and more feminine in new suited textures, as well as in classic leathers, shiny patents. You say they're hard to shop for all over the country. Hold out for the shoe shapes, heel heights you want.

The ones you want will be, most likely, in the middle neutrals (very pale bone and black are exceptions, less accepted for spring), will range from the small stacked wooden heel for daytime to a late day shape that's more tapered, higher—but not higher than two inches. We almost never say never, but the skinny needle heel doesn't look right to us, even for late-day. Bags stay small. Many bags around the country are too big to be smart.

Gloves come in the same pretty neutrals the shoes do and go with them, but don't necessarily match and, of course, don't match the outfit you're wearing.

REPORT ON CUBA

In a recent television broadcast, the Kennedy administration showed the nation a display of intelligence data to support its stand that Cuba is free of Soviet offensive weapons. The report had a twofold purpose: to reassure the people and to take some of the pressure out of the political controversy over Cuba's armed might. Despite Secretary of Defense McNamara's statement—that he believes all offensive weapons have been removed, Senator Keating seems in no mood to let up.

Your Account Number May Be Required

Account numbers will be required on individual income tax returns from now on, says S. Q. Allen, UK Ag Extension Service economist.

For most persons, he says, this will be the individual's social security number. If a wife has low or more reportable income, she will also require a social security number.

Failure to include the account (social security) number from now on will result in a \$5 fine, Allen noted.

Persons operating businesses—including farmers—should have an employer's identification number if hired wages subject to social security are paid out. Farmers would get an Agricultural Employer's Identification Number. It is used on the 1946 form, and other reporting forms such as 1066, 1069, 943 or depositary receipt forms.

If farmers already have an employer number, they should not apply for another.

Individuals needing a social security number can apply for a Form SS-4 from the local social security office or the nearest Internal Revenue office.

F.D.R. JR. GIVEN JOB

President Kennedy has selected Franklin D. Roosevelt Jr., a former campaign lieutenant and son of the late President, to be Under Secretary of Commerce. On confirmation, by the Senate, Roosevelt, 48, will succeed Edward Guiderman, who is returning to private business.

FOR THE BEST
In Business Machines
And
Office Furniture

INDEPENDENT BUSINESS MACHINES Company

Repair Work Our Specialty
All Work Guaranteed
100 Fleming Ave.
Phone ST 4-5040

AUTO PARTS NEW AND USED

700 CARS FROM WHICH TO CHOOSE
NEW ROCKER PANELS — BODY PLASTIC
RECHROME BUMPERS — NEW TAIL LIGHT
LENSES — REBUILT GENERATORS,
STARTERS AND BATTERIES.
IF YOU NEED A PART, CALL US
Why not trade with Earl Whisman?
Most Everyone else does.

RAY GOODPASTER, Parts Manager

WHISMAN AUTO SALES

Phone 392 J Mt. Sterling, Ky.
"Located in Downtown Hope, Ky."

Now Available In Morehead . . .

Professional Bookkeeping
AND
Tax Service

ROBERT M. HALL

- College Degree in Accounting
- Six Years Accounting Experience
- Native Moreheadian

OFFICE OF ACCOUNTS

McKinney Office Bldg. Opposite Post Office
State 47136 — MOREHEAD, KY.



Robert M. Hall

WANTED...
Freedom from need.

WANTED...the simple right to dignity.

WANTED...clothing...a blanket...the certainty that tomorrow this child of war-wrecked Asia will have a bowl of milk and a warm meal.

WANTED...your help to make this come true. GIVE through your church. Help provide the money and materials Church World Service sends overseas each year to cost millions to dignity, strength and a new way of life. GIVE during ONE GREAT HOUR OF SHARING AT YOUR CHURCH ON SUNDAY, MARCH 24th.

40 Years Ago, Farmers Found How to get More For Their Seed Dollars

• Back in 1923, many farmers were not satisfied with the seed available to them. Frequently it was poor seed. Poor crops and poor returns often resulted. Farmers finally solved the problem by organizing Southern States Cooperative and supplying themselves with the good seed they needed. Today, 40 years later, on some farms, seed may still be a limiting factor. The solution is still the same: To make top profits, you plant top-quality seed. Southern States top-quality Seed.



See Your . . .

Southern States Cooperative Agency NOW

LOOKING AHEAD . . . The pretty girl doesn't go with it, but for those looking to cook on the beach next summer, there is a new solar energy unit that can be used anywhere the sun shines—even where fuel-fired equipment is prohibited.

the new electric range: fast, fully automatic, flameless.

(who else could have done it?)

Its looks may be deceiving (this new electric range is deliberately designed to look built-in), but the deception goes no further.

For this is the most trustworthy range on the market. It's flameless, needs only pure electric heat to get meals done.

And the way it cooks will keep your kitchen clean. Through contact, heat goes directly from surface unit into utensils.

Newest features make the electric range faster and more automatic than ever. See then now at your appliance dealer's.



KU SYMBOL KENTUCKY UTILITIES COMPANY
OF SERVICE
an investor-owned electric company

McBRAYER'S, Inc.

Main St.
Morehead

Invites You To ...

SHARE IN THESE Tremendous SAVINGS

SALE NOW UNDERWAY AT McBRAYER'S

KLEENEX
400's
LIMIT 2 BOXES
18¢
Box

51 - 15 FIRST QUALITY
NYLONS

Reg. 89¢
37¢
Pr.

Plain White
COFFEE CUP
First Quality Reg. 15¢
SPECIAL **2 for 15¢**

Plastic
BREAD FRESHENER
Keeps Bread Fresher, Longer
Reg. 98¢ **68¢** Ea.

HERSHEY BARS
ALMOND AND MILK CHOCOLATE
3 for 9¢

LADIES' ACETATE TRICOT
PANTIES

Non-Run - Quick Dry -
Reg. 39¢
5 for 99¢

IRONING BOARD
PAD & SILICONE COVER SET
Scorch Proof - 54 Inch **58¢**

METAL
OVER-THE-DOOR HANGER
Make Use Of That Lost Space **17¢** SALE PRICE

5-Sew Household
BROOM
LIMIT ONE **74¢**

VINYL PLASTIC COATED
DISH DRAINER
Standard Sink Size — Asst. Colors
REG. \$1.19
63¢

COLGATE DENTAL CREAM
With GARDOL
53¢ Size - Limit 2 Per Customer **37¢**

KOTEX
REGULAR 12
SPECIAL **27¢**

FREE

POTTED PLANTS FOR THE LADIES

SUCKERS—GUM—BALLOONS FOR THE KIDDIES


PLASTIC
LAUNDRY BASKET
Full Bushel Size
Asst. Colors
Reg. \$1.98 **77¢**

Plastic
BABY PANTS
FOR THE TINY TOT

Plastic Water-Proof Baby Pants.
Soft Elastic Waist and Leg.
Sizes Small, Medium, Large,
Extra Large. Reg. 25¢
17¢

11-Qt. Poly
PAIL

SUPER BUY **46¢**

ADJUSTABLE
IRONING BOARD

Finger-Tip Adjustment, Non-Slip Feet, Ventilated Top.
Reg. \$6.50 **\$4.44**

12-POCKET QUILTED
Plastic
SHOE BAG
REG. 98¢ **77¢**

COMPACT PLASTIC
PITCHER
One Quart Size Fits On Any Refrigerator Shelf
37¢ REG. 59¢

NATIONALLY ADVERTISED BRAND
LIGHT BULBS
60 And 75 Watt — Stock Up Now And Save
EACH **17¢**

3-Pc. Enamel
SAUCE PAN SET
1 - 1½ - 2-Qt. Sizes
BARGAIN PRICE **97¢**

BE SURE YOU VISIT
McBRAYER'S DURING
THIS BIG SALE!

Sensational PRICE SLASHING

McBRAYER'S

Main St.

Morehead