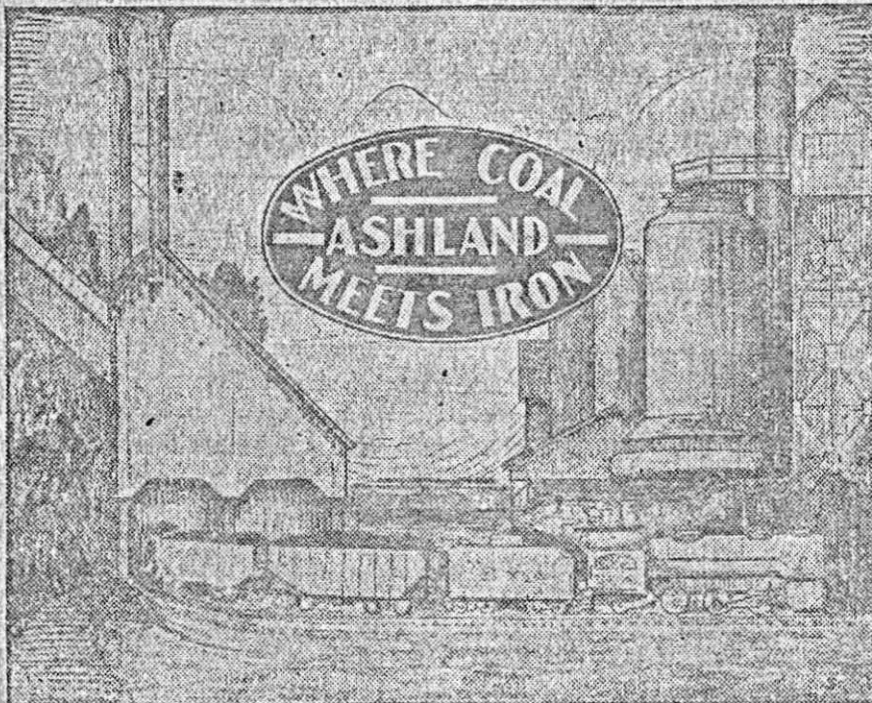


Box 1 File 8

CORDIAL GREETINGS
FROM
Ashland, Kentucky



**The Industrial Center
of Northeastern Kentucky**

GRADER PRINTING COMPANY
Ashland, Ky.

Box 2
File 8

INTRODUCTION

Ashland is primarily an industrial city whose growth has been steady in nature. It is situated in the northeast corner of Kentucky which forms part of the Tri-State section of the Ohio Valley, including Kentucky, West Virginia and Ohio.

Our population in 1920 was 15,000; at present it is 35,000, showing an increase of 133% in the past eight years.

All of our public thoroughfares are paved, and you will find our streets wide and comfortable to drive over, lined on either side with beautiful shade trees, exciting the wonderment of our visitors.

A complete digest of this booklet will convince you of the propriety of routing yourself, on any contemplated tour which will bring you anywhere within close proximity of our City Beautiful and the desirability of arranging your schedule to enable your spending some little time with us enroute.

We assure you a most cordial welcome and every effort will be made to make your visit in Ashland, Kentucky, on the Ohio River, a most happy and pleasant one.

ASHLAND CHAMBER OF COMMERCE

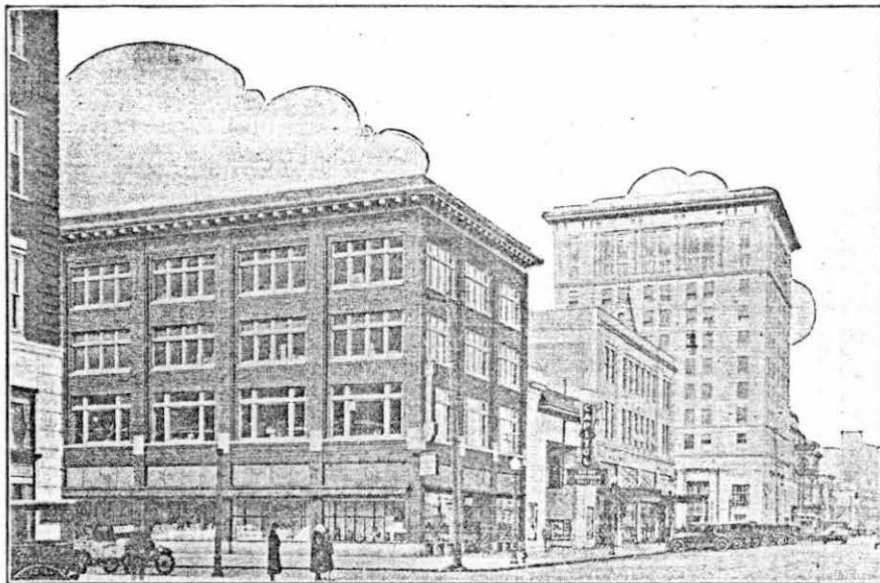
Henry Clay Hotel Building

Ashland, Kentucky

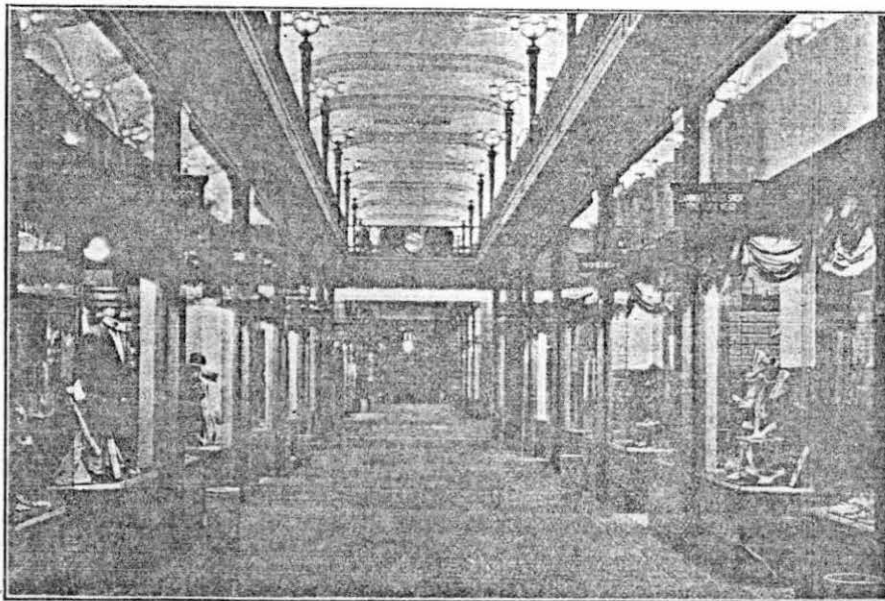
Information Bureau maintained for Tourists.

Box 1 File 8

ASHLAND, KENTUCKY



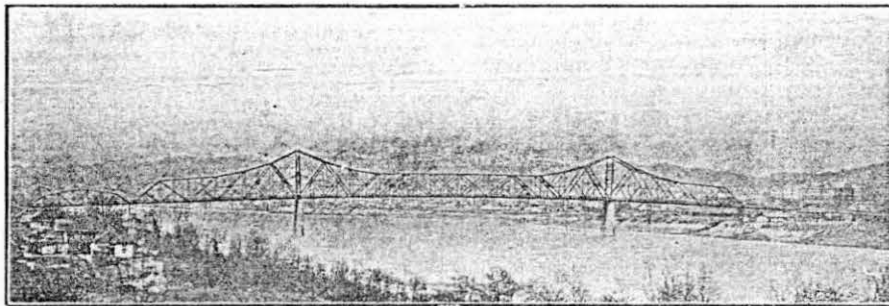
PART OF WINCHESTER AVENUE,
Ashland's Commercial Center.



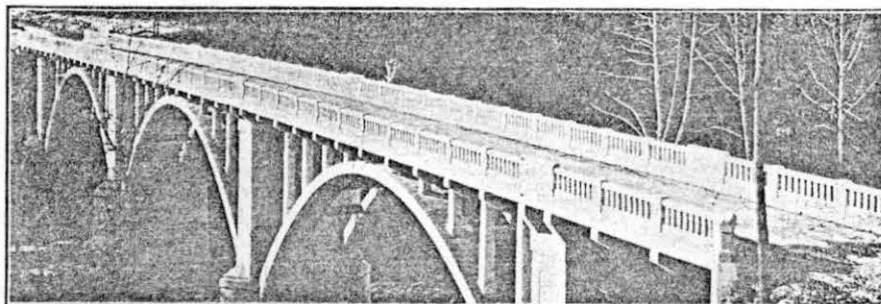
Interior view of Camayo Arcade.

Box 1 File 8

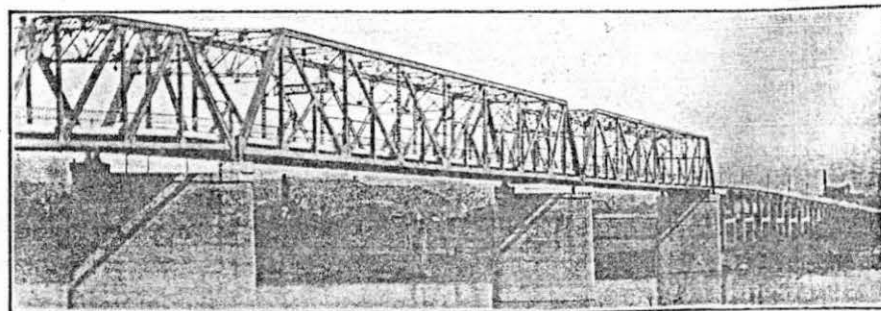
BRIDGE SCENES NEAR ASHLAND



Russell-Ironton Bridge, crossing the Ohio River near Ashland, Kentucky, connecting U. S. Routes 23, 52 and 60.



Beautiful concrete bridge seen on Midland Trail (U. S. Route 60), near Ashland, Kentucky.



Midland Trail Bridge, crossing Big Sandy River, connecting Kentucky and West Virginia, near Ashland, Kentucky.

ASHLAND'S HIGHWAY FACILITIES

Ashland, Kentucky, has passing through its area one of the great north to south Federal Highways, (U. S. Route Number 23). Two of the great east to west coast Federal Highways (Numbers 60 and 52). It is noted for its beautiful wide boulevard streets, all modernly improved and paved.

With its new highway bridge completed from Ashland to Coal Grove, crossing the Ohio River, the Midland Trail (U. S. Route Number 60), the Atlantic & Pacific Highway (U. S. Route 52), and The Mayo Trail (U. S. Route 23) will be linked together at this point.

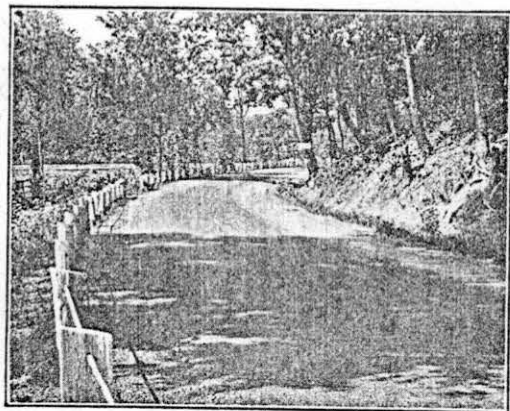
The Mayo Trail (U. S. Route 23) traversing the beautiful scenic Big Sandy Valley, the foothills of the Cumberlands, connecting with the famous Lonesome Pine Trail through the mountain fastness of Virginia to a connection with the Dixie Highway—the short route highway from the North to the South will be definitely established. This is a Federal primary highway project; practically all surfacing to be completed by the end of 1929. U. S. Route 23 further extends from Ashland, Kentucky to Newport and Covington, Kentucky, traversing the Kentucky side of the Ohio River, which, when completed, will give us a short route to Cincinnati, Ohio, and western destinations.

The Midland Trail (U. S. Route 60) passing eastward through the picturesque gorge of the New River Valley, to White Sulphur Springs, West Virginia, one of the nation's most beautiful pleasure resorts, further providing direct route to Richmond, Newport News and Atlantic coast; westward through the beautiful Glue Grass section of Kentucky, via Lexington to Louisville; further providing direct route to St. Louis and other western cities, terminating on the Pacific coast.

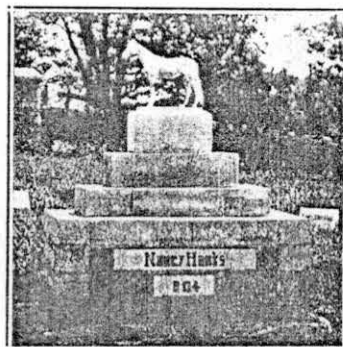
The Atlantic Pacific Highway (U. S. Route 52) passing through practically the entire length of the "Ohio River Valley" with its magnificent scenery, giving direct route to Cincinnati, Ohio, and Pittsburgh, Pa., connecting with the Scioto Trail at Portsmouth, Ohio, providing direct route through the agricultural section of the Scioto Valley to Columbus, Ohio, Great Lakes, north and northwest and beyond Cincinnati to the west.

These primary highways, augmented by our inter-county improved highway system, gives every possible highway facility advantage that can be desired by tourists.

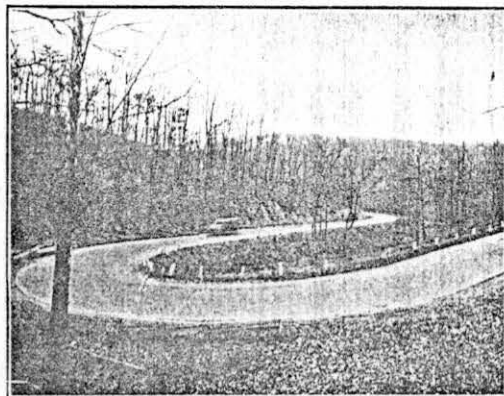
ON THE MIDLAND TRAIL



View on Midland Trail (U. S. Route 60) near Ashland. Seen enroute to Lexington, Kentucky.

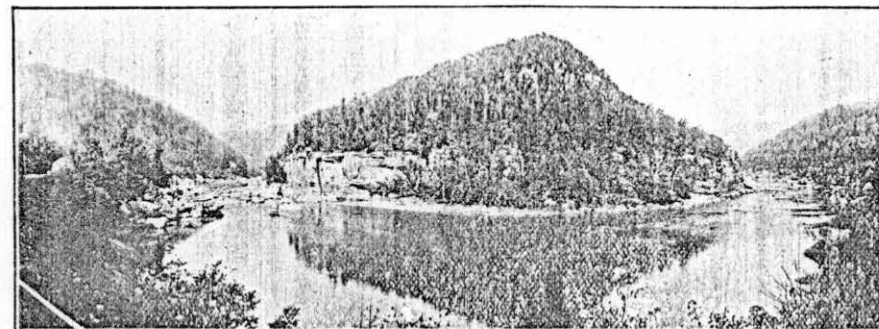


Peaceful resting place of that well known thoroughbred, Nancy Hanks, and other turf notables, on U. S. Route 60, between Ashland, Kentucky and Louisville, Kentucky.

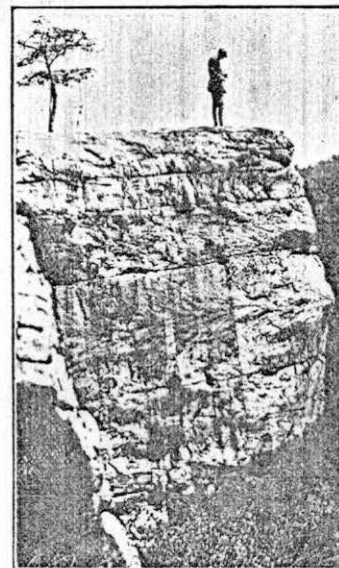


Beautiful "Horseshoe Bend". This view can be seen on U. S. Route 60, immediately upon leaving Ashland.

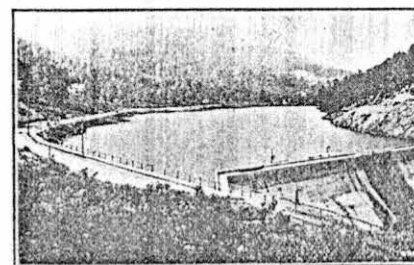
COMING INTO ASHLAND



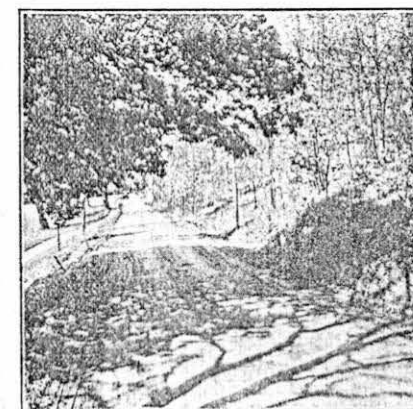
The above picture depicts a most beautiful mountain view on U. S. Route 60, New River Gorge, West Virginia.



The reproduction on the left is Look-out Rock, U. S. Route 60, in the New River Gorge of West Virginia.



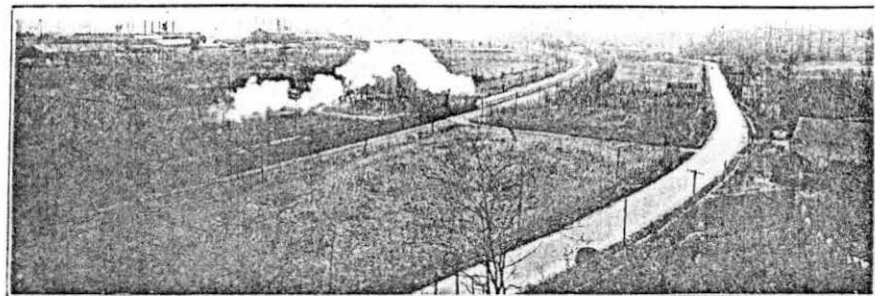
View of point where Lonesome Pine Trail joins the Mayo Trail;



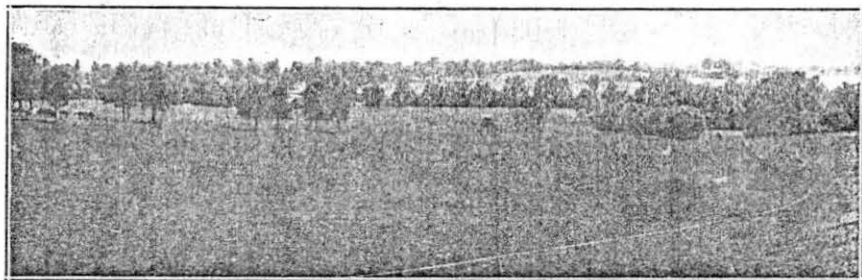
Beautiful Allegheny Mountain scene— White Sulphur Springs, West Virginia U. S. Route 60

Box 1 File 8

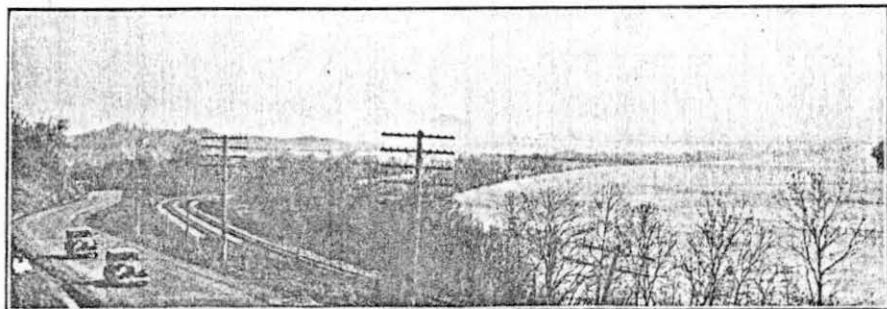
HIGHWAYS AND BYWAYS



View of U. S. Route 52, seen when approaching Ashland, Kentucky, when enroute east.

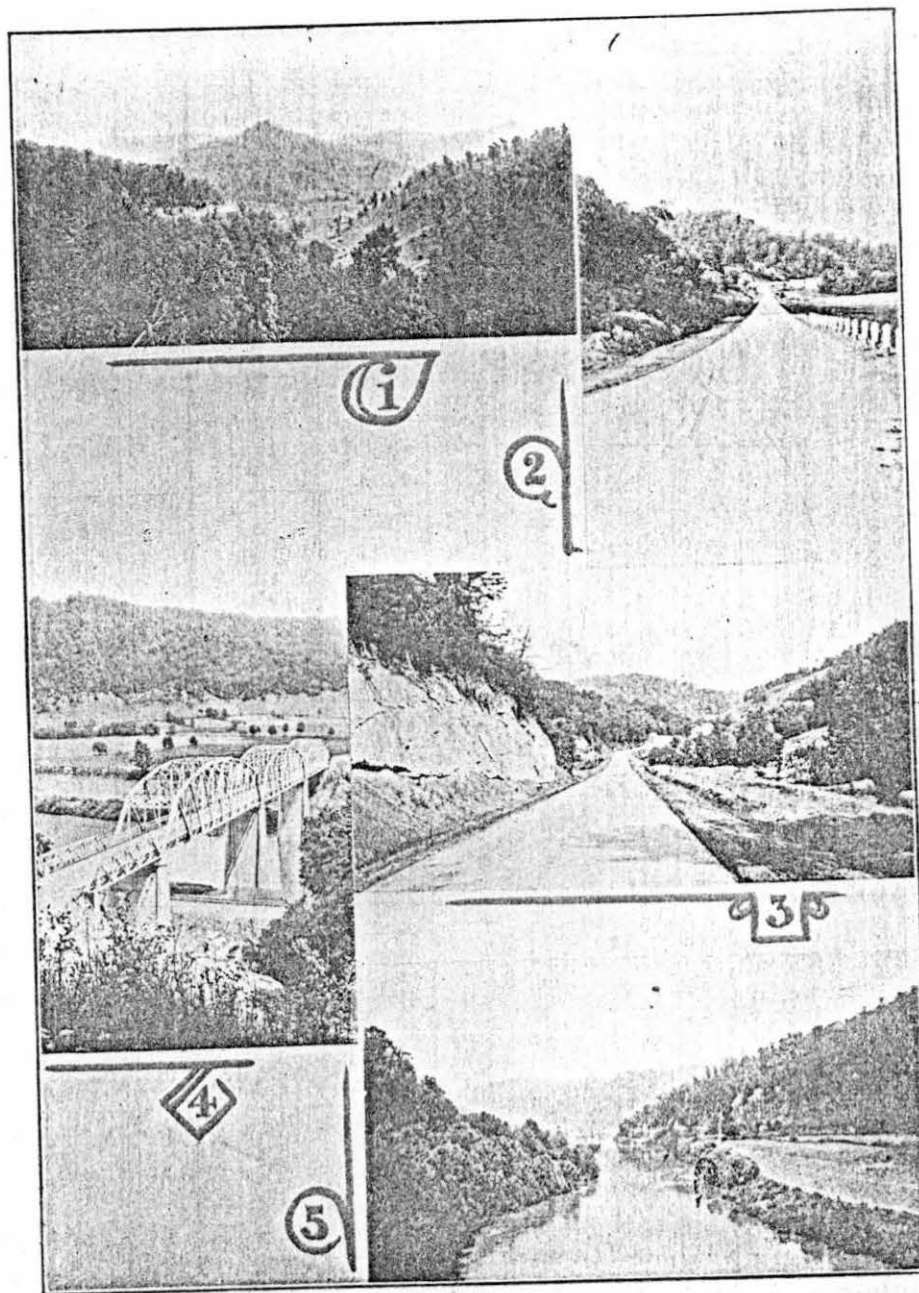


One of Kentucky's beautiful Blue Grass farms; the home of the thoroughbred seen on U. S. Route 60.



View of U. S. Route 23, seen on approaching Ashland, Kentucky from the west.

MATCHLESS SCENIC BEAUTY



The above are reproductions of familiar views seen on the Mayo Trail (U. S. Route 23), leading from Ashland, Kentucky, through the beautiful Big Sandy Valley to Jenkins, Kentucky, where it joins the historical Lonesome Pine Trail.

ASHLAND'S TRANSPORTATION FACILITIES

Ohio River, and tributary streams providing an artery of commerce affording inland waterway transportation at most economic cost. The Ohio, with its outlet into the Mississippi River, makes available an all water route to the markets of the world via seaboard port facilities of the Mississippi and the Gulf of Mexico.

Chesapeake and Ohio Railway, providing main line service to Chicago, Toledo, Cincinnati, Columbus, Louisville, Washington, D. C., Richmond, Newport News. Connections at Washington D. C. to Baltimore, Philadelphia, New York City, and eastern territory; Newport News for eastward and export; Toledo for Great Lakes territory; Cincinnati, Columbus and Louisville for north, west and northwestern territory; Richmond for south Atlantic territory; Cincinnati and Louisville for southern territory; and, Big Sandy Division, Ashland to Elkhorn City, Kentucky, or short line to the south.

Motor bus service direct to Lexington, Louisville, Charleston and Columbus, with connections to practically all portions of the United States.

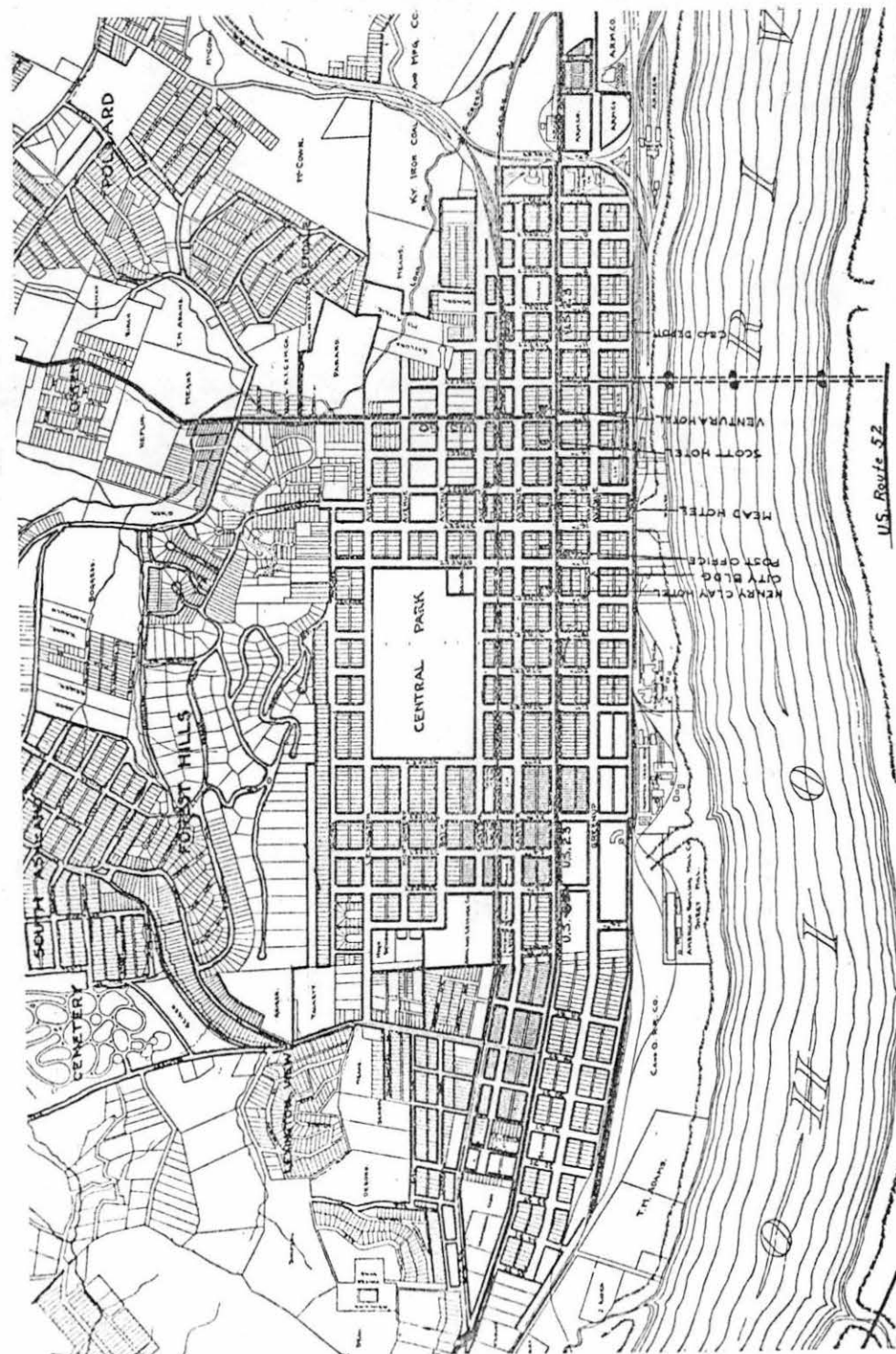
Tri-State airport, providing all necessary equipment for air travel and air mail service will be in full operation by August 1st, 1929.

Interurban street railway service with neighboring cities of Huntington, W. Va., Ceredo-Kenova, W. Va., Catlettsburg, Kentucky, Ironton, Ohio and Portsmouth, Ohio.

Highway Bridge crossing the Ohio River under construction to cost \$1,500,000.00, connecting Ashland, Kentucky with Coal Grove; also connecting the Midland Trail and Atlantic Pacific Highway, two important coast to coast Federal primary highway systems, will be completed in the spring of 1930.

Midland Trail bridge crossing Big Sandy River, connecting Catlettsburg, Kentucky and Ceredo-Kenova, West Virginia.

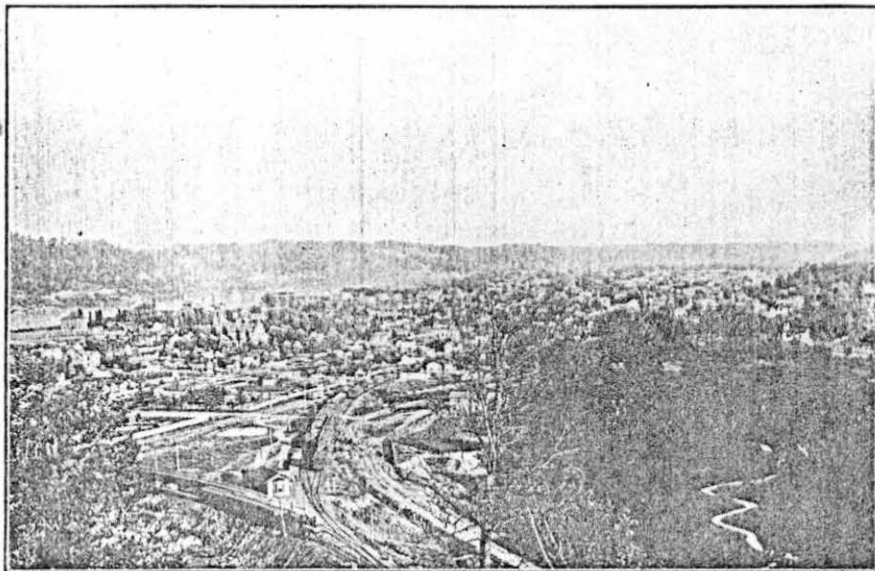
Fifteen minute bus service between Ashland, Russell, and Greenup, Kentucky. Russell, a municipality five miles from Ashland, on main line of Chesapeake and Ohio Railway, the terminal and classifying yards of this railway, are the largest individual terminal yards in the United States.



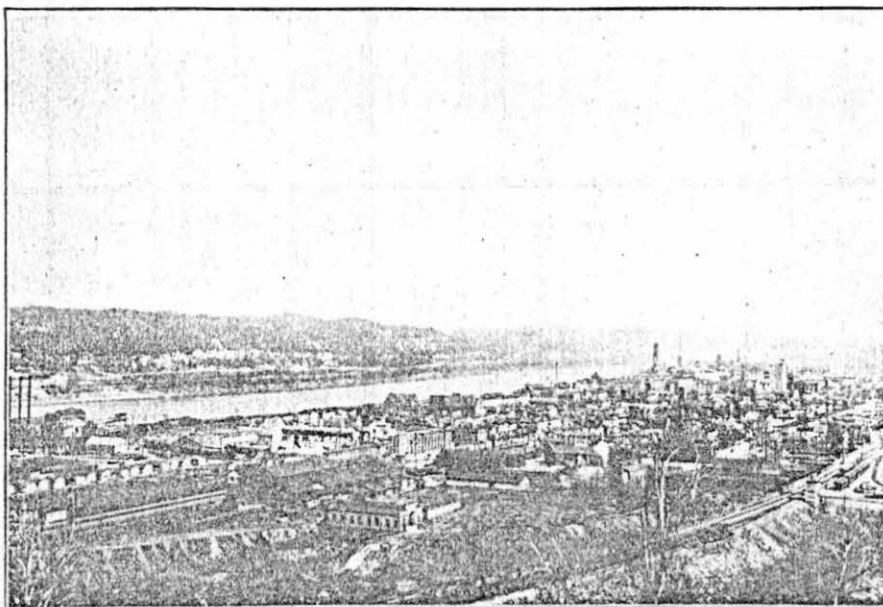
Box 1 File 8

ASHLAND'S PROGRESS

"Kentucky's City Beautiful"

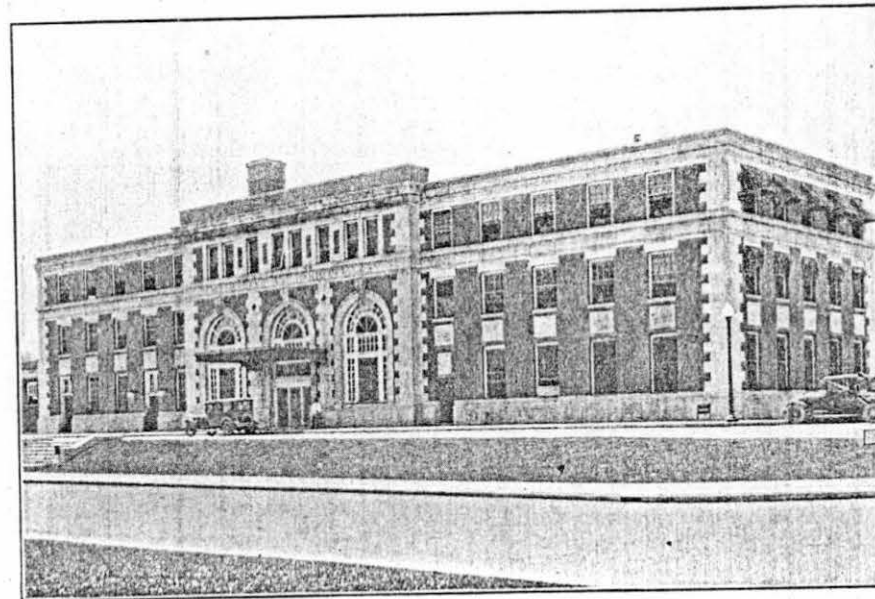


Birds eye view of Ashland, Kentucky—1899.

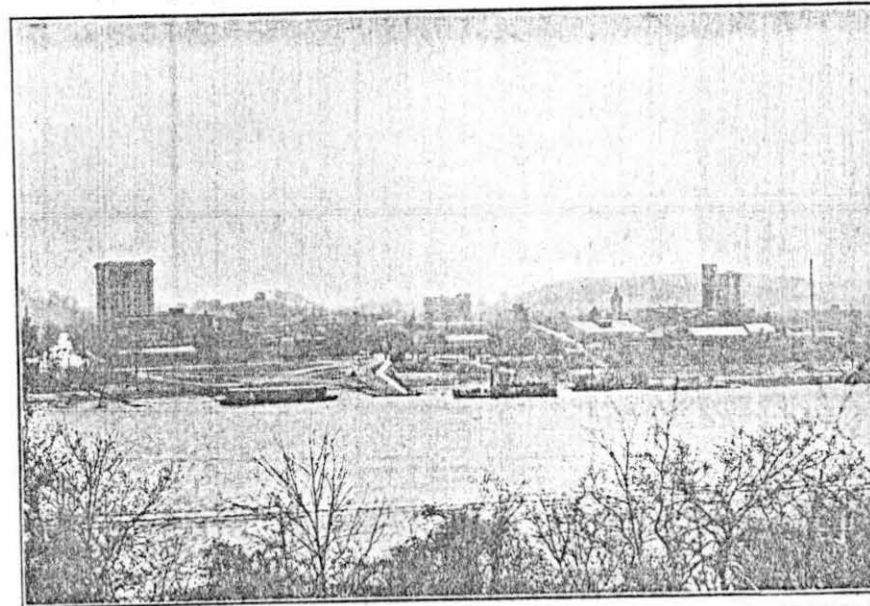


Birds eye view of Ashland, Kentucky—1929.

PASSENGER TERMINALS

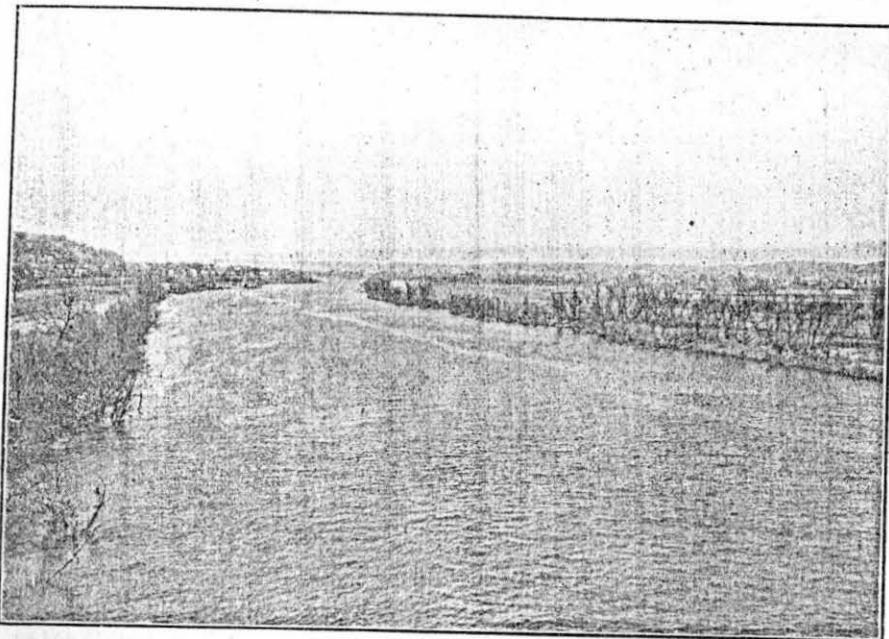


The Chesapeake & Ohio Railway's Modern Passenger Station

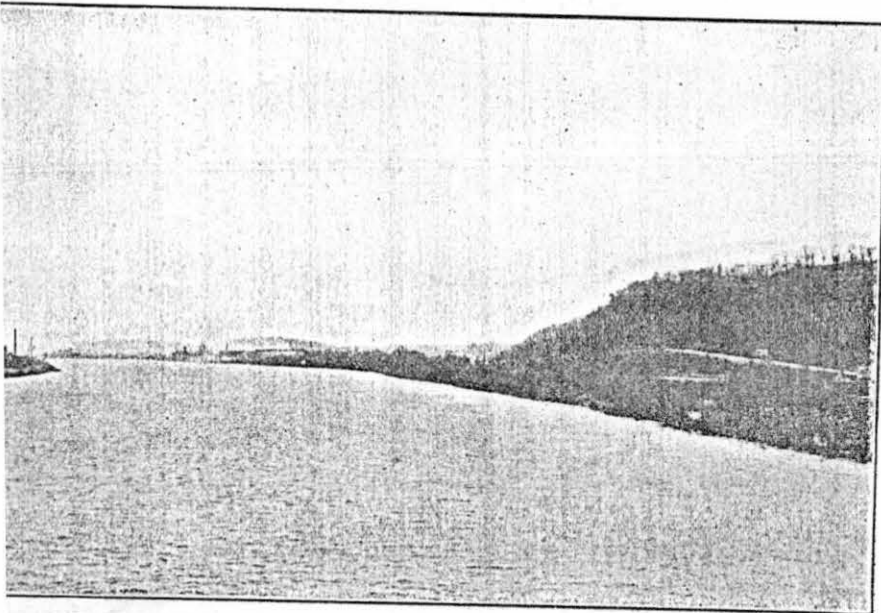


View of Ashland's Ohio River Terminal—from
A. & P. Highway (U. S. Route 52).

INTERESTING RIVER VIEWS



The Tri-State section of Ohio River Valley—Kentucky, Ohio and West Virginia.



View of Ohio River, seen when approaching Ashland, Kentucky, enroute east

Box 1 File 8

ASHLAND'S MUNICIPAL FACILITIES

Residential Section.—Our residential section is most inducive to rest and comfort. It is widespread, without cramped living conditions and designed to afford ample space for all. It varies from the boulevard residential section surrounding our beautiful Central Park area to the most suburban hilltop section, surrounded by what can well be termed a virgin forest area. In this respect the wishes of any resident contemplating home building can be gratified here at Ashland, Kentucky's wonder city.

Schools.—Ashland, Kentucky, enjoys a school system second to none. Our public school system, consisting of graded schools and A-1 credited Junior and Senior high school courses. A parochial school consisting of graded school and accredited high school courses. In addition, we have available a kindergarten, business college, conservatory of music and dancing, and school of music.

In connection with our school activity, we call attention to Ashland High School's "Tomcats" (boys) basketball team, state and national champions, 1928; Ashland High School "Kittens" (girls) basketball team, state champions, 1928 and 1929; Ashland High School "Tomcats" (boys) football team, state champions, 1928.

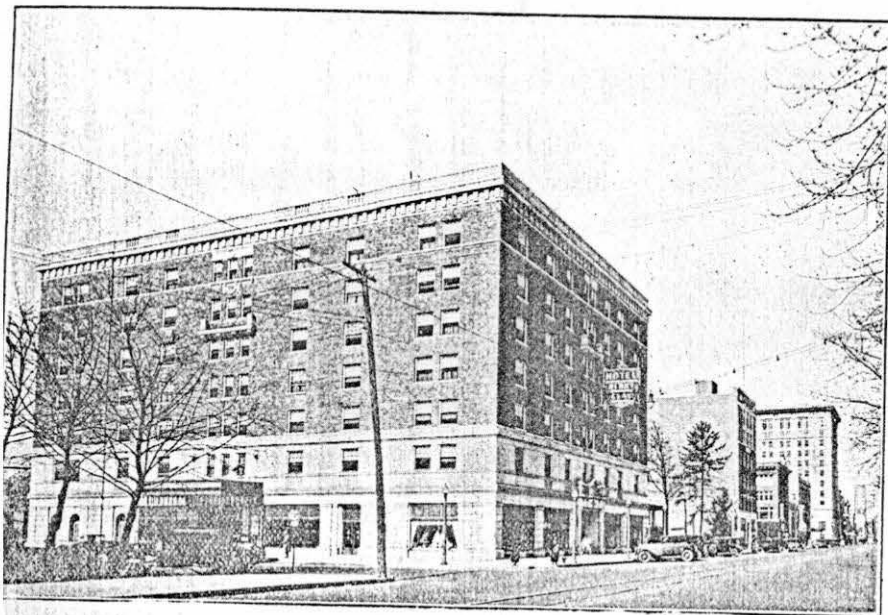
Churches.—Churches of all denominations are represented and centrally located in Ashland, Kentucky, insuring abundant church facilities to meet each and every industrial demand.

Hospitals.—Ashland has two fully equipped hospitals with every modern appliance known to medical science for the care of their patients. Both hospitals maintain an efficient training school for nurses, assuring competent hospital service at all times.

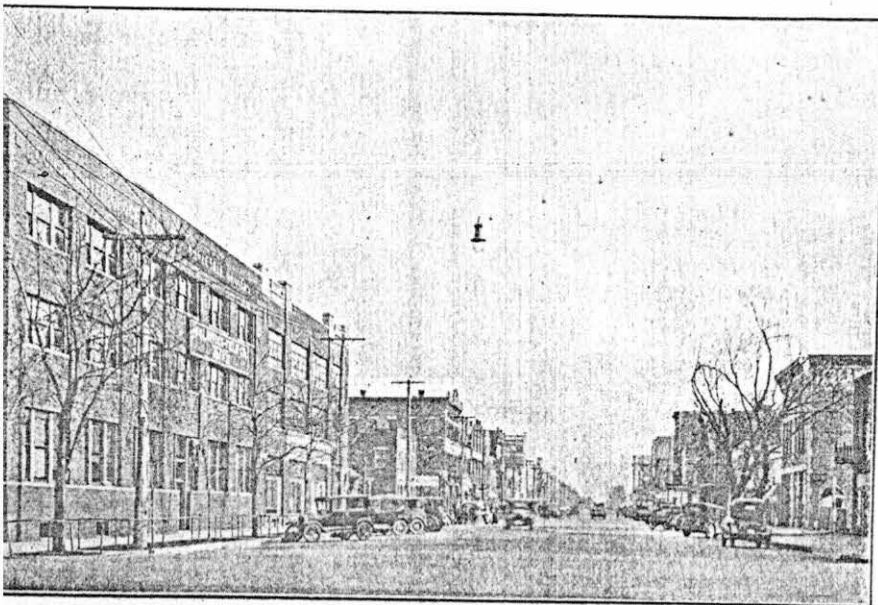
Hotels.—Ample first class hotel facilities are available. Our hotels are outstanding in their reputation for courteous and efficient service; operated on the European plan. Following is a list of Ashland's popular hotels and their addresses:

HENRY CLAY HOTEL, Corner 18th and Winchester Ave.
NEW VENTURA HOTEL, Corner 13th and Winchester Ave.
SCOTT HOTEL, Winchester Ave., bet. 13th and 14th Sts.
MEADE HOTEL, Winchester Ave. bet. 15th and 16th Sts.

WIDE STREETS AND AVENUES



Winchester Avenue, showing the Henry Clay Hotel.



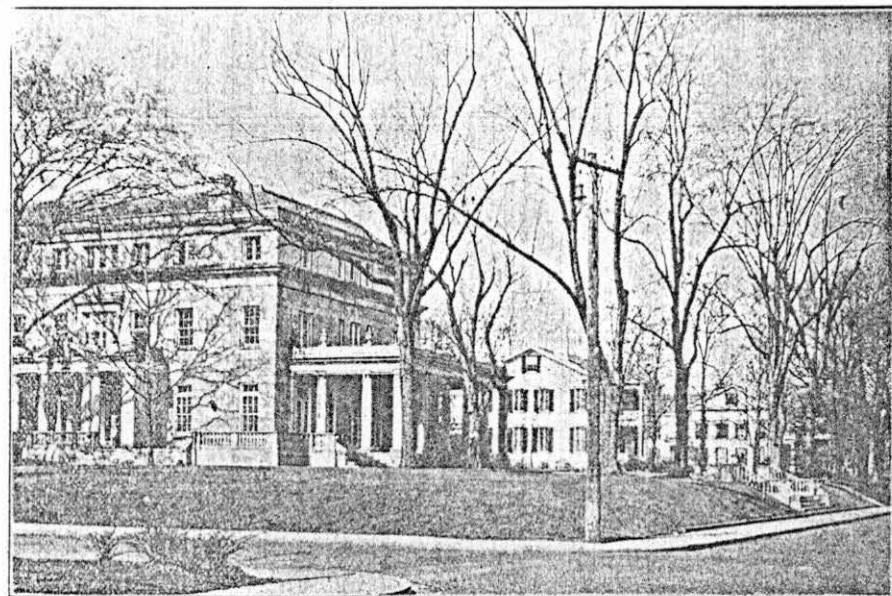
Greenup Avenue—Ashland's wholesale, commercial section.

Box 1 File 8

A CITY OF HOMES

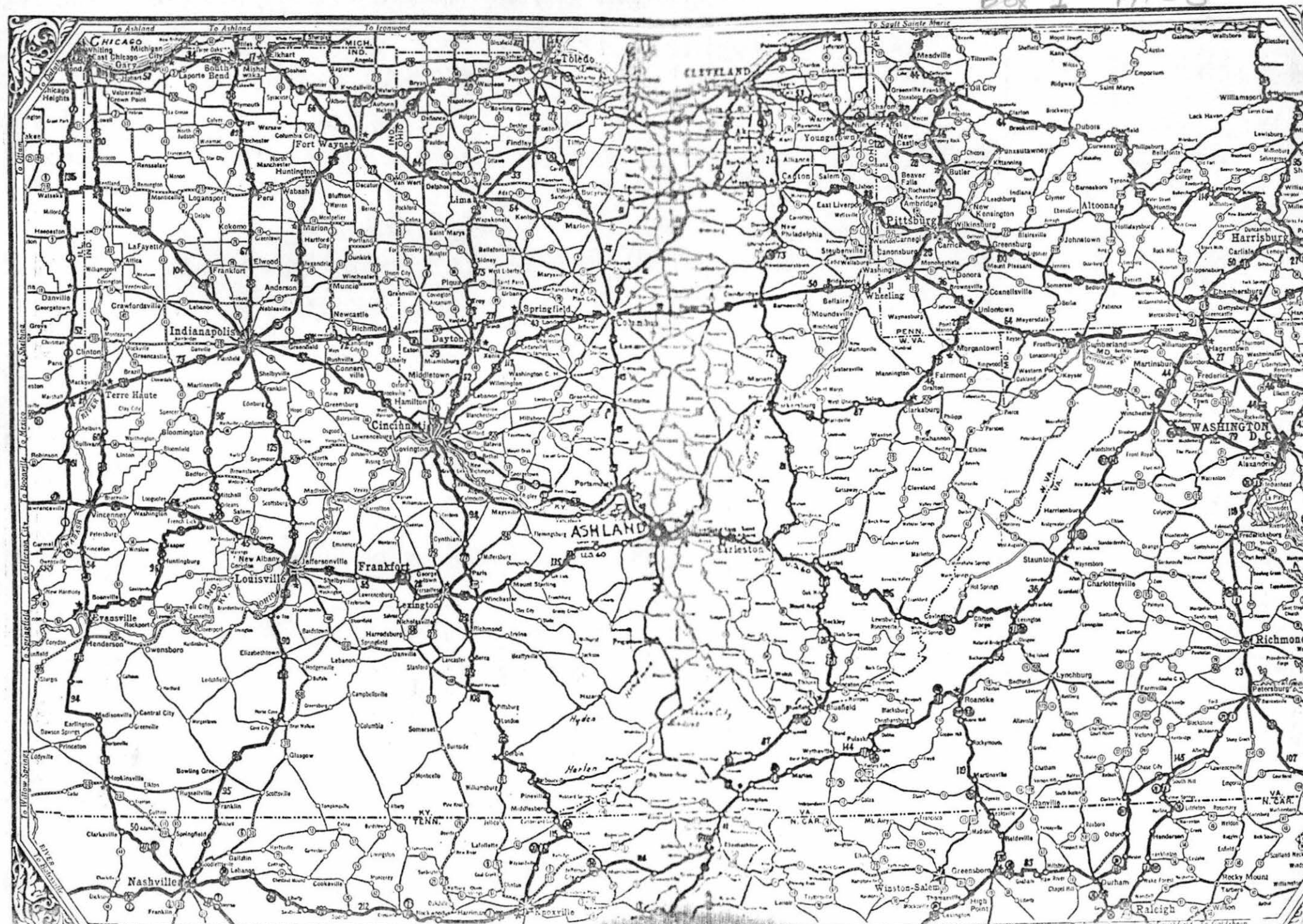


View of one of Ashland's suburban sections.



HIGHWAY MAP SHOWING PRINCIPAL PRIMARY HIGHWAYS AND CONNECTING HIGHWAYS WITH ASHLAND, KENTUCKY, THE "CENTRAL HUB."

Box 1 file 8



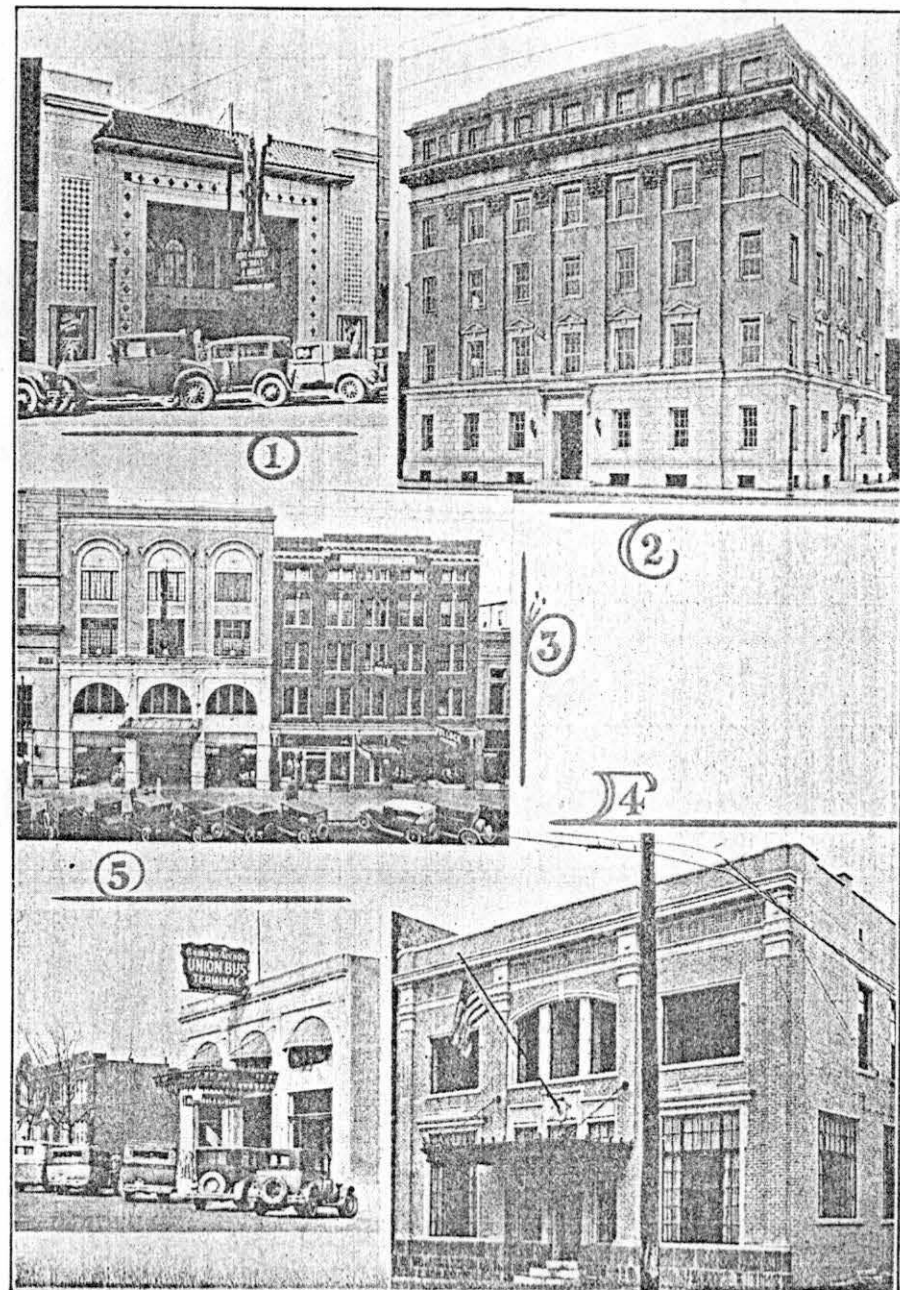
BEAUTIFUL BUSINESS BUILDINGS



(1)—Second National Bank; (2)—Ashland National Bank;
(3)—Ventura Hotel.

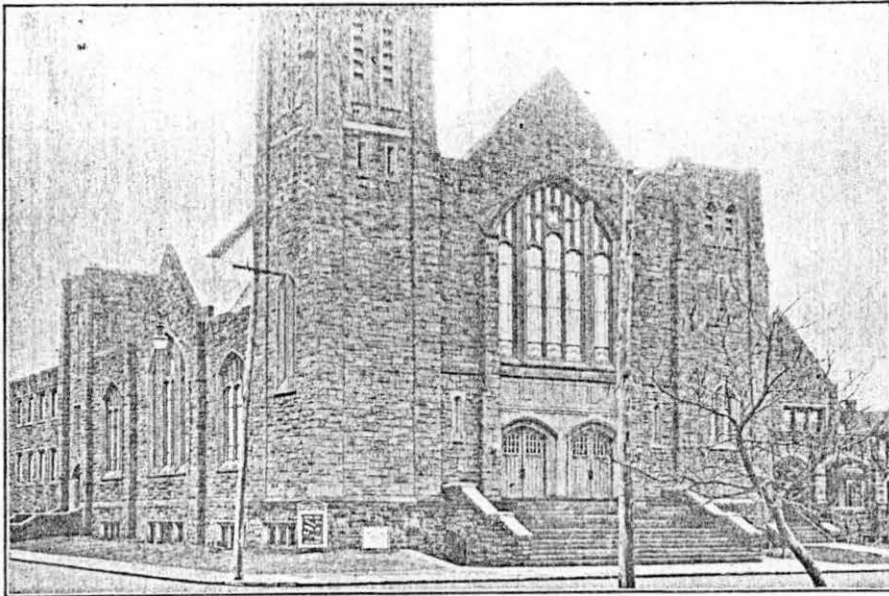
Box 2 File 8

REPRESENTATIVE BUILDINGS

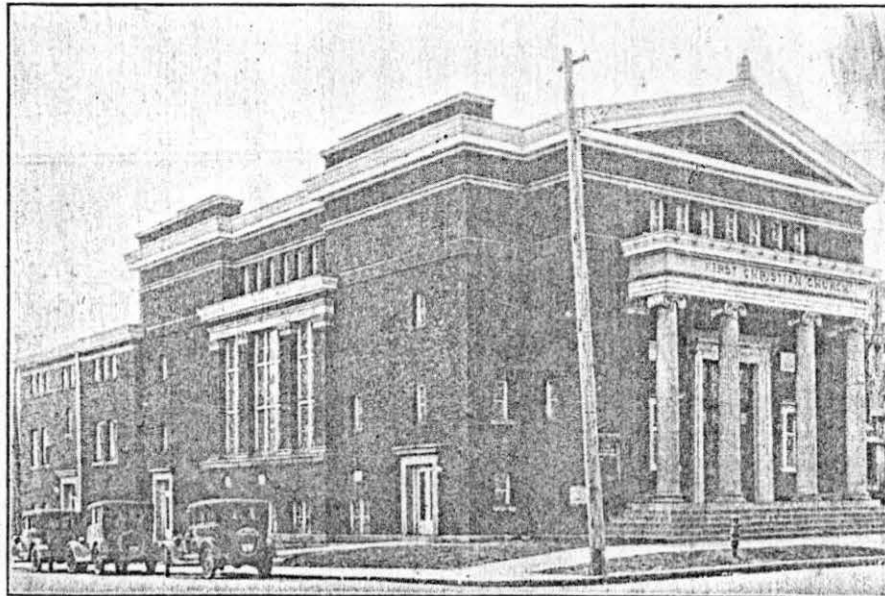


(1)—Capitol Theatre; (2)—City Building; (3)—Camayo Arcade and Meade Hotel; (4)—Ashland Publishing Co.; (5)—Union Bus Terminal.

TWO OF OUR CHURCHES

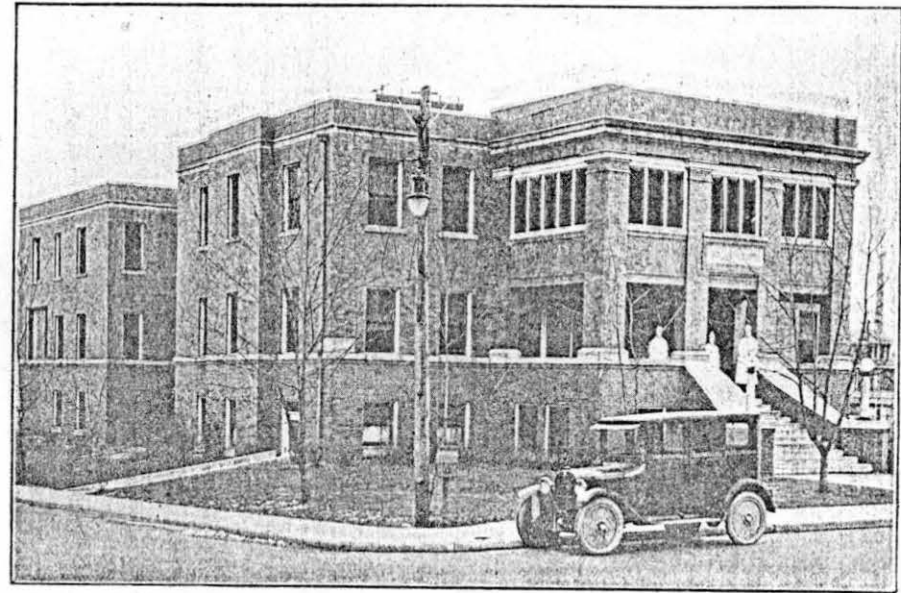


First Methodist Episcopal Church



First Christian Church

MODERN HOSPITALS

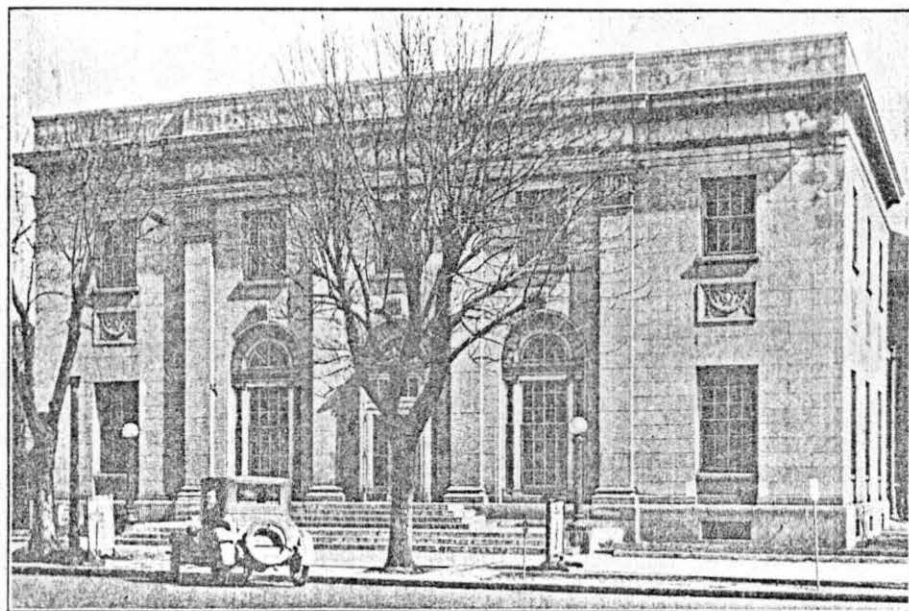


King's Daughters' Hospital.

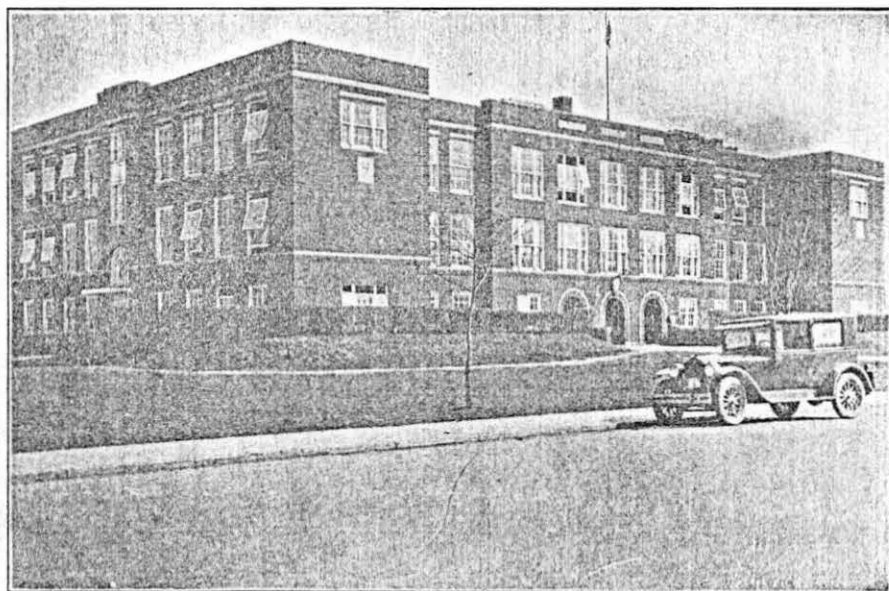


Stephenson Hospital and Clinic.

MODERN INSTITUTIONS



United States Post Office and Federal Office Building



Senior High School Building

ASHLAND'S AMUSEMENT FACILITIES

Theatres.—Five theatres are in operation to provide this class of amusement for those so inclined. Two of these theatres are most modern; all theatres showing the highest type of amusement.

Athletic Field.—Through the courtesy of the American Rolling Mill Company, our largest industry, an adequate and first class athletic field is supplied. Football, baseball, tennis, track meets, etc., are held regularly in their respective seasons. This provides for those desiring this class of entertainment.

Country Club.—Our Country Club is a scene of virgin forest beauty, located in the broad flat woods area of our hilltop section. This beautiful Country Club has been constructed with a first class eighteen hole golf course, tennis courts, and all other accessories necessary for a complete club of this nature.

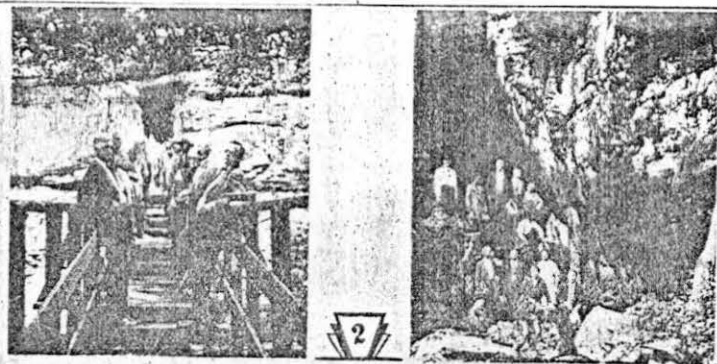
Public Golf Course.—We have also a public nine hole golf course available for the use of those interested in golf. This course is also in the flat woods area of our hilltop section.

Public Playgrounds.—We have in the central part of Ashland our Central Park of fifty acres. This beautiful tract of virgin forest area has been preserved by the far sighted original founders of Ashland and dedicated as a permanent public playground for its citizens. This excellent park is within five minutes walk of all public buildings and the commercial center of the city.

Swimming Pools.—Two modern, up-to-date sanitary swimming pools are installed and in operation during the entire summer.

Racing.—Kentucky has ever been noted as the Home of High Class Racing. Raceland Track is located six miles from Ashland, Kentucky, on U. S. Route 23, where for a period of thirty days each summer season, Kentucky's Thoroughbreds compete.

CARTER CAVES



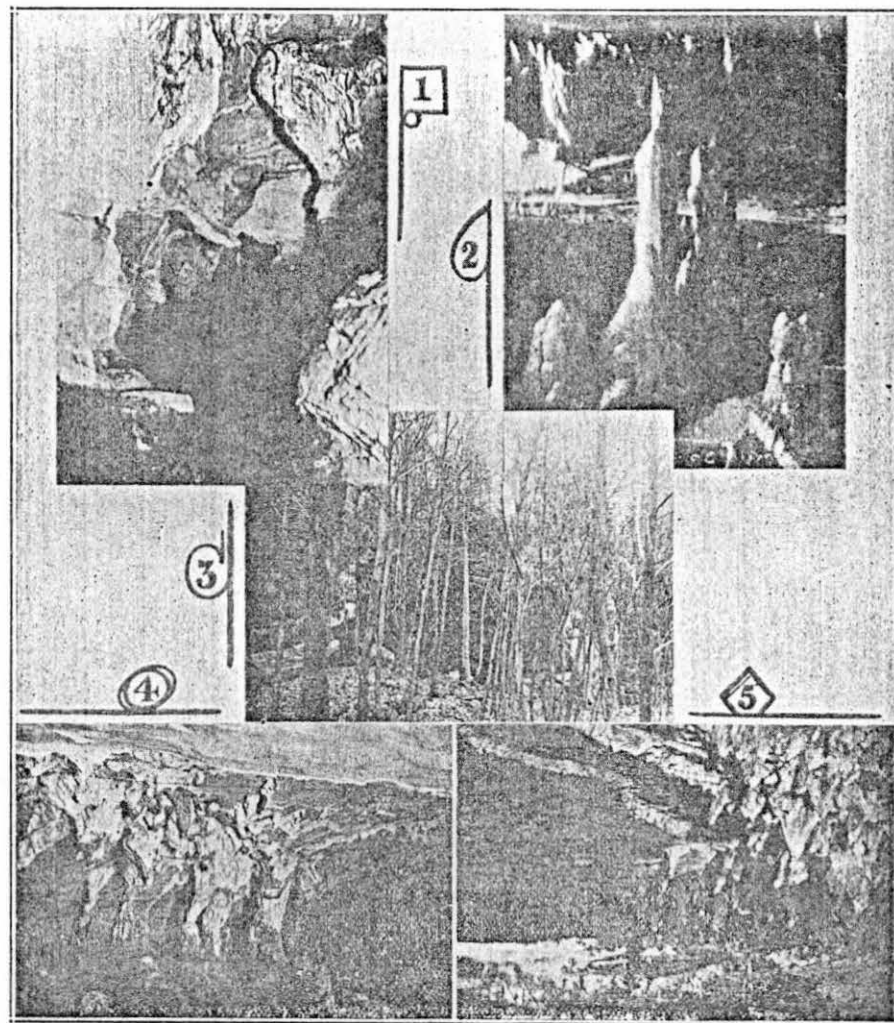
(1)—Entrance to Carter Caves; (2)—Smoky Bridge; (3)—Entrance to Bat Cave; (4)—Scene in caves; (5)—Natural Bridge.

The Cascade Caverns and Carter Caves are located near Rayson, Carter County, Kentucky. The two largest Natural ridges in the United States are situated at Carter Caves.

You can reach this Rustic Beauty Spot of Eastern Kentucky via the Midland Trail (U. S. Route No. 60), driving 38 miles from Ashland, Kentucky, thence miles over an inter county ghwy, which will bring you to these "Natural Subterranean iversn" with all their "Scenic Beauty".

Tourists passing through Ashland Kentucky should by all

CASCADE CAVERNS

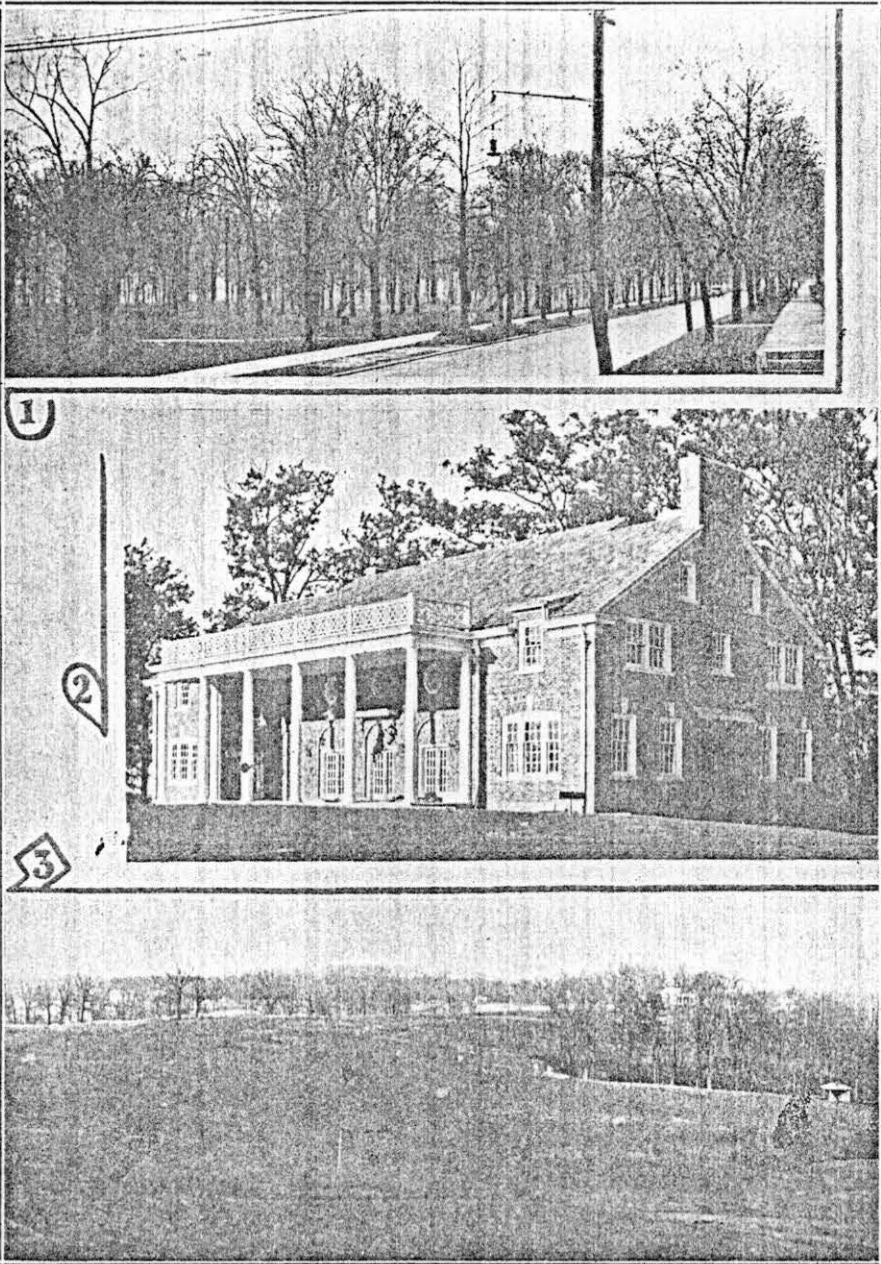


(1)—Dome Room; (2)—Cathedral Room; (3)—Entrance; (4)—Garden of the Gods; (5)—Chinese Temple.

means arrange for a stop over of one day at least to enable making a side trip to Cascade Caverns and Carter Caves. Our hotels will gladly provide you with picnic lunches in order that you may enjoy a day reveling in this "Rustic Beauty Spot of Eastern kentucky", exploring these underground passages with their mysterious Stalactite and Stalagmite formations of majestic and stately splendor.

Competent and dependable guides furnished all visitors by

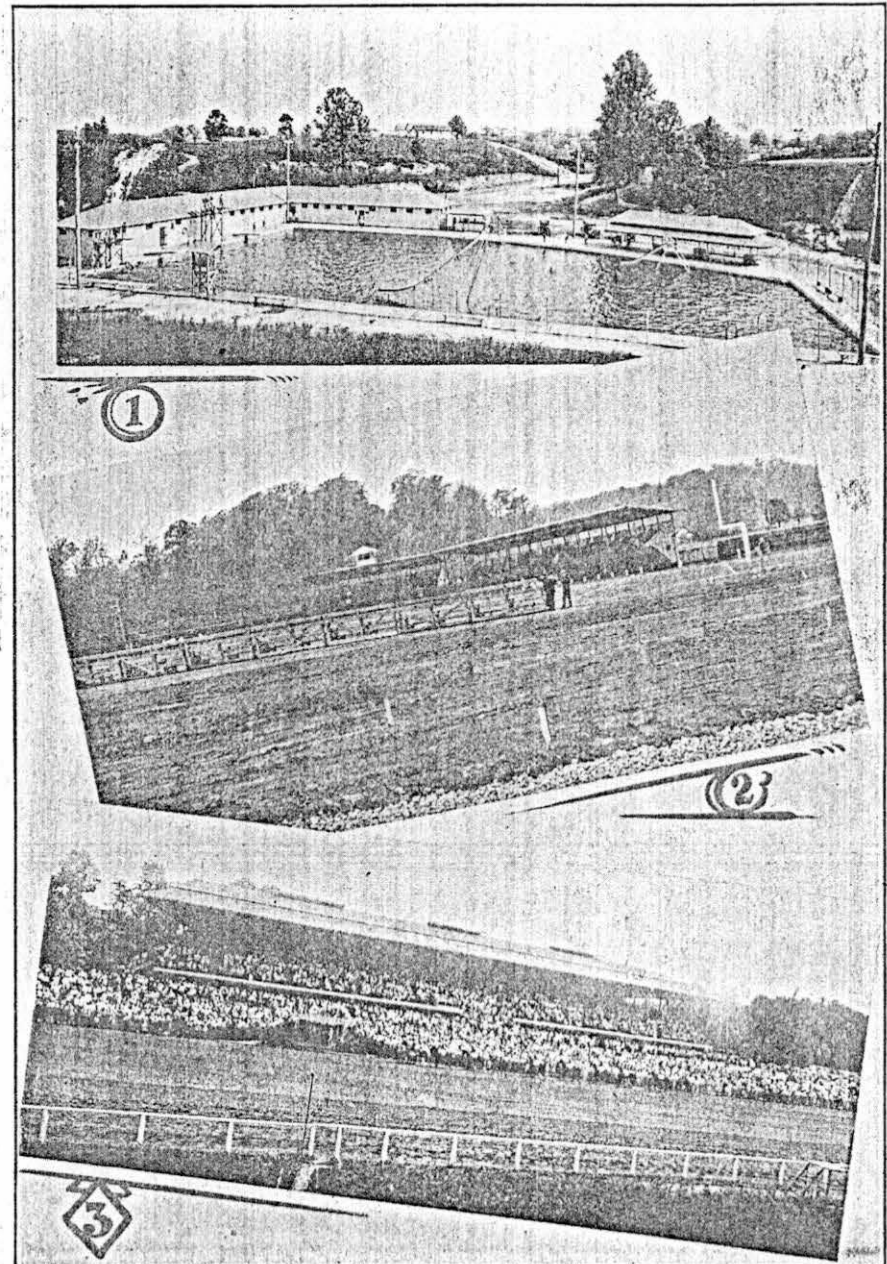
SCENIC RECREATIONS



(1)—Part of Ashland's beautiful 50 acre Public Playground—Central Park.
 (2)—Bellefonte Country Club's new club house. (3)—Bellefonte

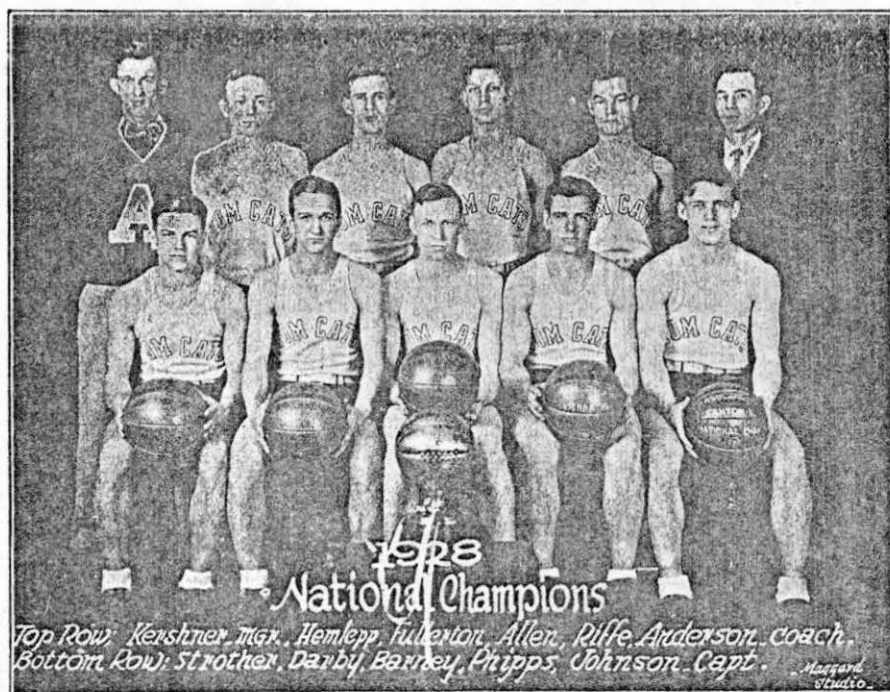
Box I File 8

OTHER SPORT FACILITIES.



(1)—One of our up-to-date Swimming Pools. (2)—Armco Athletic Field—
 Home of Ashland's athletic activities. (3)—Raceland—Ashland's
 modern race track "Where Kentucky's thoroughbreds shine"

ASHLAND'S PROUD CHAMPIONS

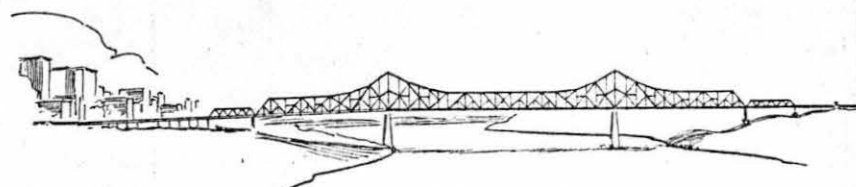


ASHLAND'S "TOMCATS"



ASHLAND'S COMMERCIAL AND INDUSTRIAL FACILITIES

We have three large National Banks; the Ashland National, Second National and Third National, with combined resources of over \$12,000,000.00. We have three Building and Loan Associations with an aggregate capital of \$15,000,000.00. Through these agencies the financing of home construction is made less burdensome to our citizens desiring this service.



Reproduction from blue print plan of Ashland-Coal Grove Highway Bridge crossing the Ohio River and connecting U. S. Routes 23, 52 and 60, at Ashland, Kentucky.

Our wholesale and retail commercial establishments are centralized within a few minutes walk from all hotels and public buildings. You will find all our stores modern and up to date, providing most anything you might desire, so that, either residents or visitors have ready access to these important phases of life.

Our water works is a most modern installation of filtration system, supplying wholesome, clear, pure cold water the year round.

Natural gas and fuel oil in abundance at a low cost of service comparable with any other portion of the United States.

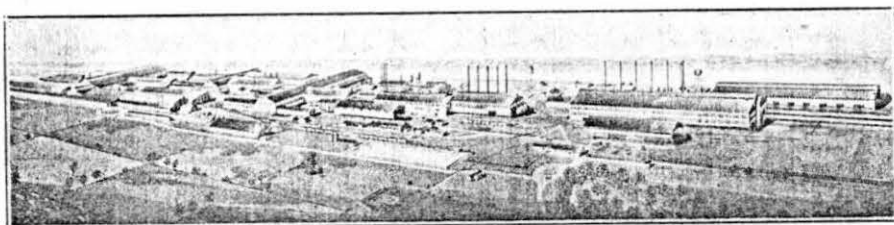
Power facilities of a potentiality sufficient to meet the most exacting demands at a low cost of service comparable with any other portion of the United States.

Telephone and telegraph facilities in full keeping with the rapid progress and development of this entire community.

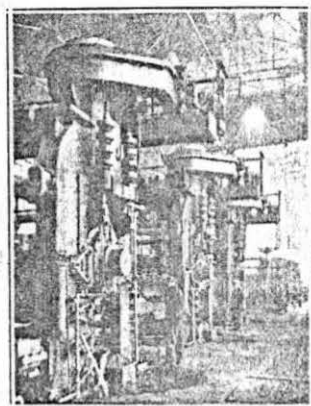
Local street car, motor bus, and taxi service to all parts of city and surrounding territory.

Ashland, Kentucky, is primarily a progressive, wide awake industrial center, endowed as it is with every natural resource conducive to industrial activity. There are thirty industrial corporations active in our city, employing over 7,500 persons, with an annual payroll in excess of \$2,000,000.00.

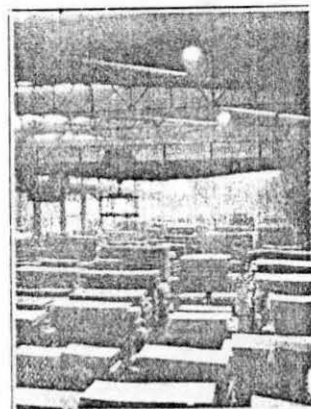
TYPICAL ASHLAND INDUSTRIES



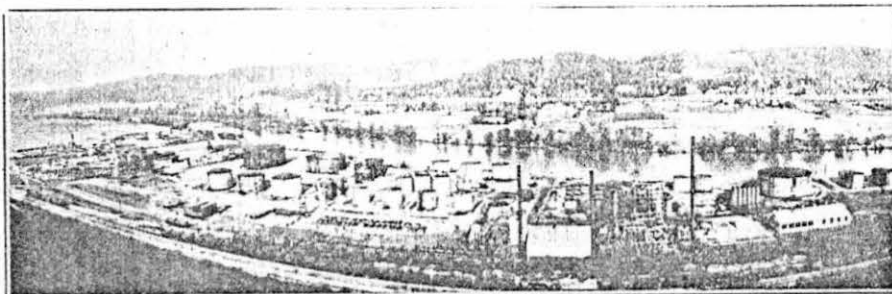
Birds eye view of West Works,
THE AMERICAN ROLLING MILL COMPANY



INTERIOR
VIEWS
OF
AMERICAN
ROLLING
MILL
COMPANY

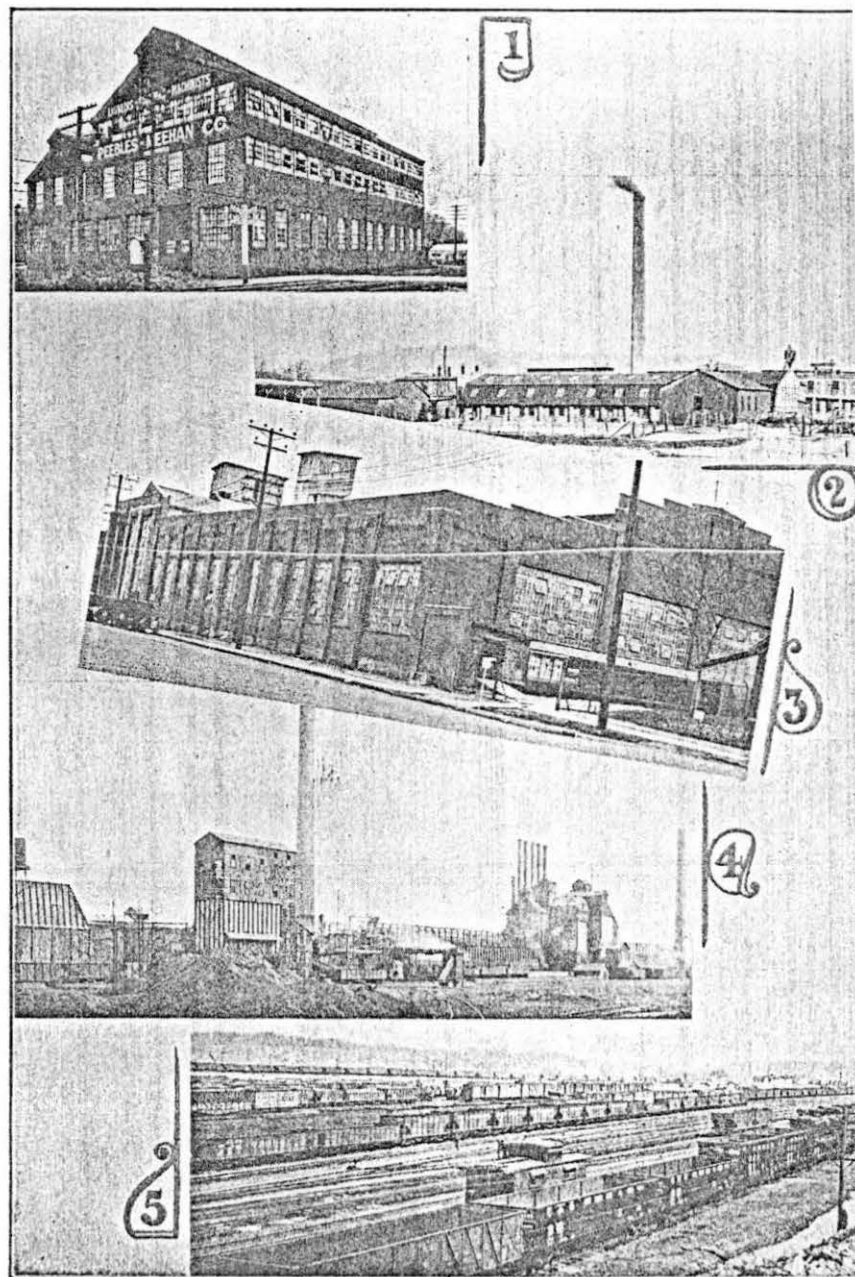


View of warehouse from
which Special Grades of
High Finish and Enamel
Sheets are shipped to the
principal factories of the
world.



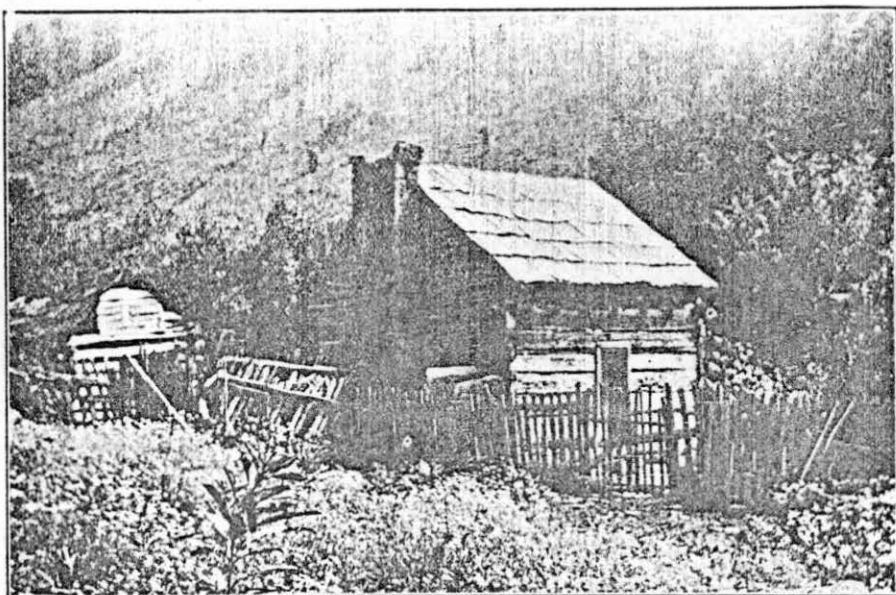
ASHLAND REFINING COMPANY Plant, on Big Sandy River,
near Ashland, Kentucky.

MODERNLY CONSTRUCTED

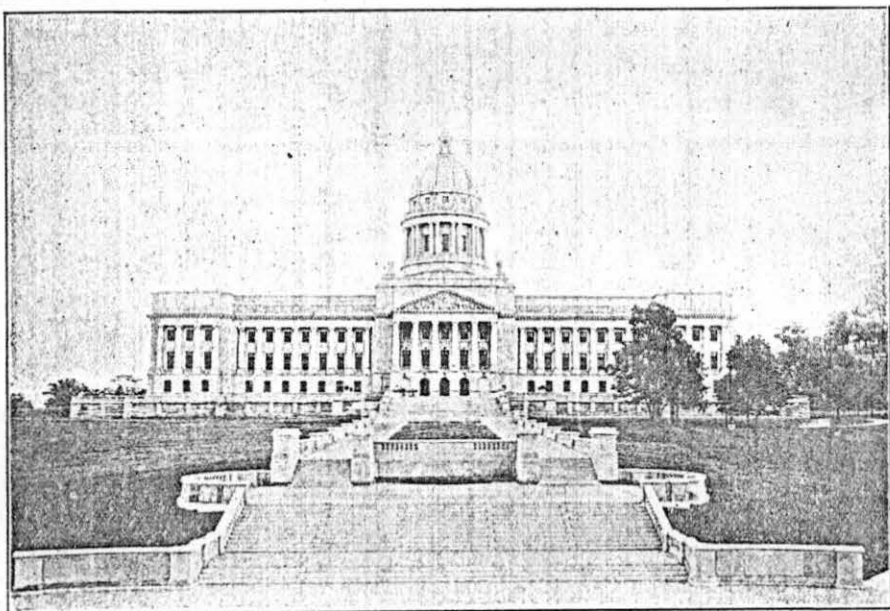


(1)—Peebles-Meehan Co. (2)—Ashland Leather Company. (3)—North
American Refractories Company. (4)—Ashland By-Product Coke
Company (5) Railroad Yard near Ashland, Kentucky

THE SUN SHINES BRIGHT IN OUR "OLD KENTUCKY HOME"



Kentucky home of pioneer days.



CONCLUSION

This booklet, a brief pictorial review of points of interest in and near Ashland, Kentucky, is published to give you reliable information about our locality. We trust our efforts will in a practical way give you some conception of our "Beautiful City", situated on the Ohio River and surrounded by the magnificent foot hills of the Appalachian Mountain range.

We sincerely hope you will make it a point to visit our City while enroute on either business or pleasure. We know you will find it both pleasant and profitable. Our maxim is in keeping with the familiar Eastern Kentucky saying, "The Latch String is always hanging out in our Old Kentucky Home."

A letter to the Ashland Chamber of Commerce, Henry Clay Hotel Building, Ashland, Kentucky, will bring you prompt and courteous reply, should you desire any additional detailed information.

We are always at your service.

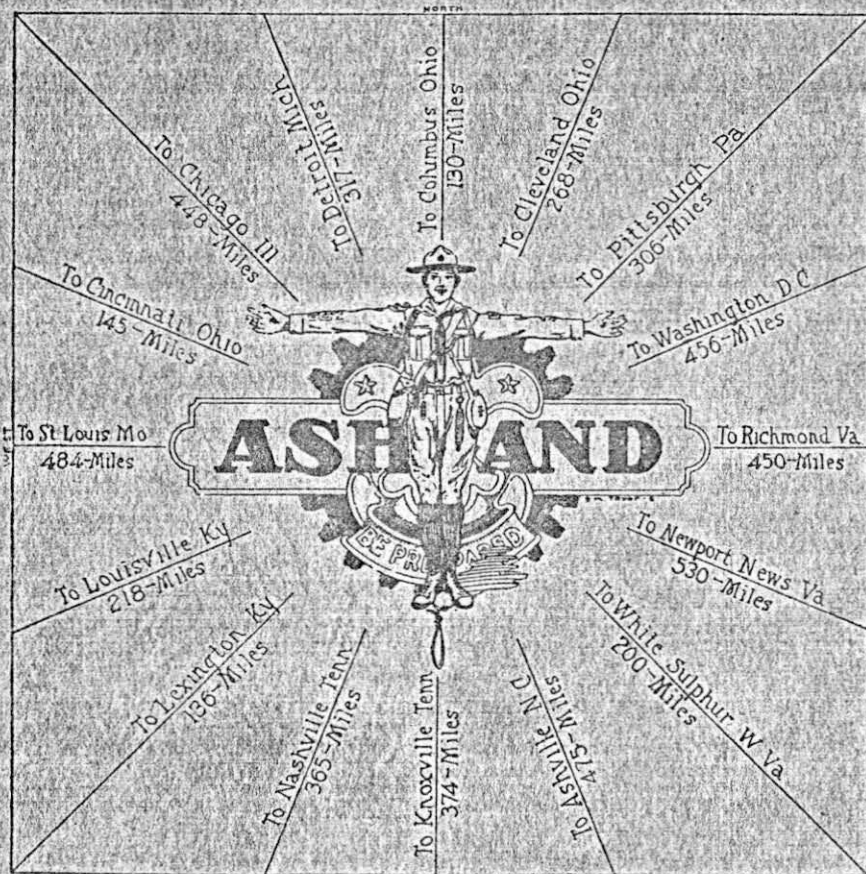
ASHLAND CHAMBER OF COMMERCE

Henry Clay Hotel Building
Ashland, Kentucky

Box 2 File 8

Ashland, Kentucky

The Central Hub



**These Highway Routes Radiate
from Ashland, Kentucky**